

Who are the Civilian Federal Employees in

Wisconsin - 2021

Federal Workers in Wisconsin: 17,798

Percentage Who Are Veterans: 24.65%

Non-Federal Workers in Wisconsin: 2,910,000¹

Percentage Who Are Veterans: 4.64%¹

Five Largest Federal Employers

VA: 9,902



Army: 1,854



Agriculture: 1,540



DHS: 740



Justice: 740



Race and Ethnicity

White, non-Hispanic	14,695	82.6%
Black/African American, non-Hispanic	1,387	7.8%
Hispanic or Latino	727	4.1%
Asian, non-Hispanic	547	3.1%
Two or more races	218	1.2%
American Indian and Alaska Native	176	1.0%
Native Hawaiian and Other Pacific Islander	26	0.1%

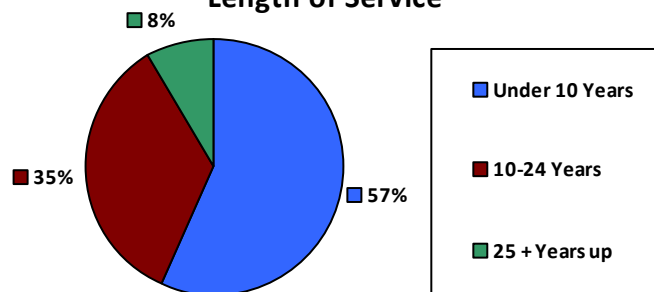
Gender

M	8,137	45.7%
F	9,661	54.3%

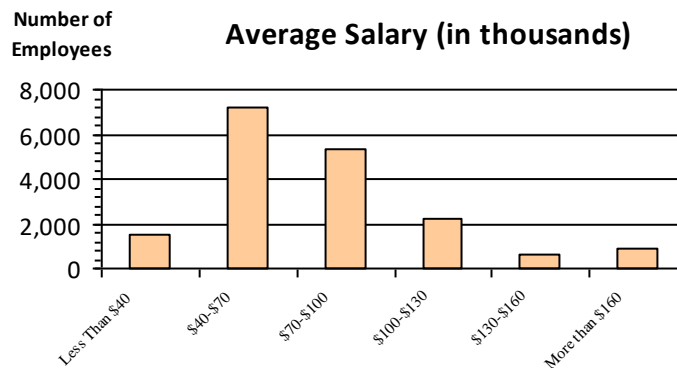
Age

<35	3,724	20.9%
35-54	9,668	54.3%
55+	4,406	24.8%

Length of Service



Average Salary (in thousands)



Educational Attainment

HS or Below	4,060	22.8%
Occupational Program	548	3.1%
Between HS and Bachelors	3,825	21.5%
Bachelors + Post Bachelors	6,345	35.6%
Masters and Post Grad	2,290	12.9%
Doctorate and Post Doc	709	4.0%

Type of Employment²

Administrative	6,086	34.2%
Professional	4,041	22.7%
Technical	1,146	6.4%
Clerical	422	2.4%
Other White Collar	1,358	7.6%
Blue Collar	1,495	8.4%

All data unless otherwise noted is provided by the US Office of Personnel Management for the December 2015 reporting period. ¹Non-Federal Workers Data calculated from the US Bureau of Labor Statistics 2015 Annual Averages https://www.bls.gov/news.release/archives/vet_03222016.pdf. ²Employment categories consistent with the definitions given by the US Office of Personnel Management "Introduction to the Position Classification Standards" 2009. For a description of the employment categories, refer to <http://www.opm.gov/policy-data-oversight/classification-qualifications/classifying-general-schedule-positions/positionclassificationintro.pdf>.

Who are the Civilian Federal Employees in

Wisconsin - 2020

Federal Workers in Wisconsin: 17,958

Percentage Who Are Veterans: 25.12%

Non-Federal Workers in Wisconsin: 2,822,000¹

Percentage Who Are Veterans: 5.74%¹

Five Largest Federal Employers

VA: 6,651



Justice: 5,412



Treasury: 3,549



Army: 1,345



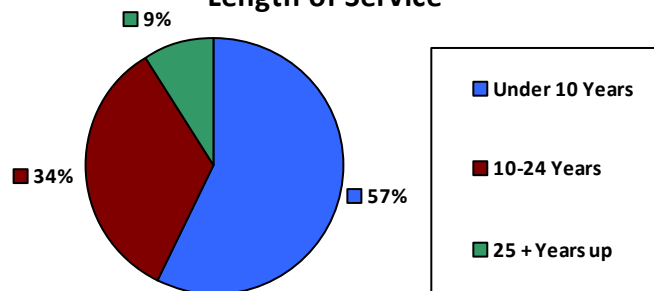
DHS: 777



Race and Ethnicity

White, non-Hispanic	14,872	82.8%
Black/African American, non-Hispanic	1,397	7.8%
Hispanic or Latino	714	4.0%
Asian, non-Hispanic	522	2.9%
Two or more races	209	1.2%
American Indian and Alaska Native	176	1.0%
Native Hawaiian and Other Pacific Islander	24	0.1%

Length of Service



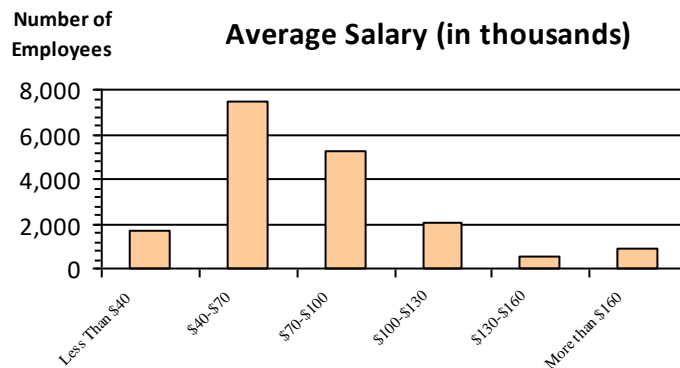
Educational Attainment

HS or Below	4,190	23.3%
Occupational Program	594	3.3%
Between HS and Bachelors	3,862	21.5%
Bachelors + Post Bachelors	6,334	35.3%
Masters and Post Grad	2,261	12.6%
Doctorate and Post Doc	697	3.9%

Gender

Gender			Age		
M	8,373	46.6%	<35	3,884	21.6%
			35-54	9,607	53.5%
F	9,585	53.4%	55+	4,467	24.9%

Average Salary (in thousands)



Type of Employment²

Administrative	4,671	26.0%
Professional	5,960	33.2%
Technical	4,143	23.1%
Clerical	1,223	6.8%
Other White Collar	433	2.4%
Blue Collar	1,495	8.3%

All data unless otherwise noted is provided by the US Office of Personnel Management for the December 2015 reporting period. ¹Non-Federal Workers Data calculated from the US Bureau of Labor Statistics 2015 Annual Averages https://www.bls.gov/news.release/archives/vet_03222016.pdf. ²Employment categories consistent with the definitions given by the US Office of Personnel Management "Introduction to the Position Classification Standards" 2009. For a description of the employment categories, refer to <http://www.opm.gov/policy-data-oversight/classification-qualifications/classifying-general-schedule-positions/positionclassificationintro.pdf>.

Who are the Civilian Federal Employees in

Wisconsin - 2019

Federal Workers in Wisconsin: 17,409

Percentage Who Are Veterans: 25.80%

Non-Federal Workers in Wisconsin: 2,909,000¹

Percentage Who Are Veterans: 6.26%¹

Five Largest Federal Employers

VA: 9,421



Army: 1,798



Agriculture: 1,405



DHS: 782



Justice: 720



Race and Ethnicity

White, non-Hispanic	14,432	82.9%
Black/African American, non-Hispanic	1,388	8.0%
Hispanic or Latino	666	3.8%
Asian, non-Hispanic	516	3.0%
Two or more races	197	1.1%
American Indian and Alaska Native	177	1.0%
Native Hawaiian and Other Pacific Islander	20	0.1%

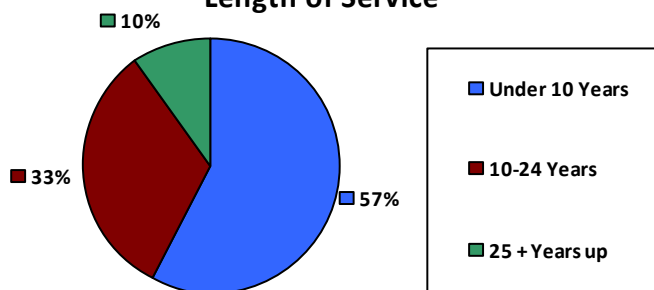
Gender

M	8,170	46.9%
F	9,239	53.1%

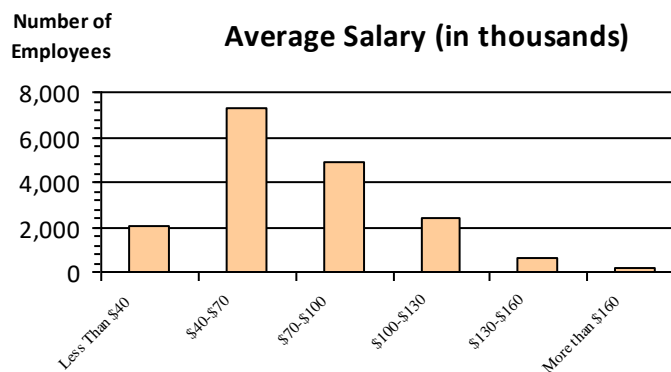
Age

<35	3,746	21.5%
35-54	9,272	53.3%
55+	4,391	25.2%

Length of Service



Average Salary (in thousands)



Educational Attainment

HS or Below	3,512	20.2%
Occupational Program	871	5.0%
Between HS and Bachelors	4,032	23.2%
Bachelors + Post Bachelors	6,111	35.1%
Masters and Post Grad	2,095	12.0%
Doctorate and Post Doc	772	4.4%

Type of Employment²

Administrative	4,504	25.9%
Professional	5,739	33.0%
Technical	3,926	22.5%
Clerical	1,315	7.6%
Other White Collar	382	2.2%
Blue Collar	1,504	8.6%

All data unless otherwise noted is provided by the US Office of Personnel Management for the December 2015 reporting period. ¹Non-Federal Workers Data calculated from the US Bureau of Labor Statistics 2015 Annual Averages https://www.bls.gov/news.release/archives/vet_03222016.pdf. ²Employment categories consistent with the definitions given by the US Office of Personnel Management "Introduction to the Position Classification Standards" 2009. For a description of the employment categories, refer to <http://www.opm.gov/policy-data-oversight/classification-qualifications/classifying-general-schedule-positions/positionclassificationintro.pdf>.

Who are the Civilian Federal Employees in

Wisconsin - 2018

Federal Workers in Wisconsin: 17,212

Percentage Who Are Veterans: 26.17%

Non-Federal Workers in Wisconsin: 2,952,000¹

Percentage Who Are Veterans: 5.96%¹

Five Largest Federal Employers

VA: 9,221



Army: 1,841



Agriculture: 1,405



DHS: 758



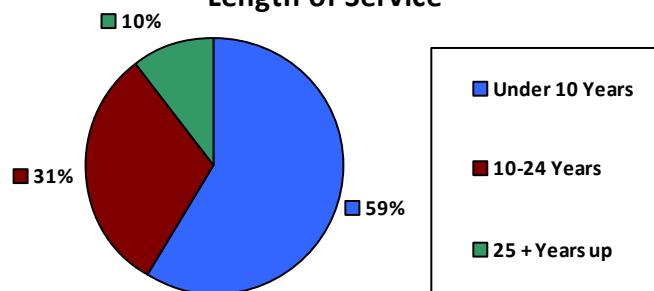
Justice: 708



Race and Ethnicity

White, non-Hispanic	14,342	83.3%
Black/African American, non-Hispanic	1,343	7.8%
Hispanic or Latino	641	3.7%
Asian, non-Hispanic	469	2.7%
Two or more races	190	1.1%
American Indian and Alaska Native	198	1.2%
Native Hawaiian and Other Pacific Islander	20	0.1%

Length of Service



Educational Attainment

HS or Below	3,413	19.8%
Occupational Program	927	5.4%
Between HS and Bachelors	4,030	23.4%
Bachelors + Post Bachelors	6,083	35.3%
Masters and Post Grad	2,035	11.8%
Doctorate and Post Doc	705	4.1%

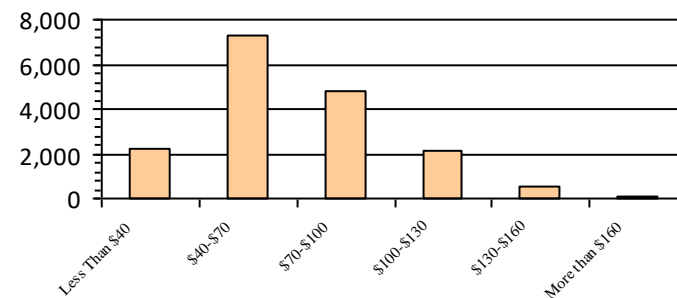
Gender

M	8,179	47.5%
F	9,028	52.5%

Age

<35	3,915	22.7%
35-54	9,070	52.7%
55+	4,227	24.6%

Average Salary (in thousands)



Type of Employment²

Administrative	4,392	25.5%
Professional	5,588	32.5%
Technical	4,023	23.4%
Clerical	1,205	7.0%
Other White Collar	372	2.2%
Blue Collar	1,601	9.3%

All data unless otherwise noted is provided by the US Office of Personnel Management for the December 2018 reporting period. ¹Non-Federal Workers Data calculated from the US Bureau of Labor Statistics 2018 Annual Averages www.bls.gov/news.release/pdf/vet.pdf. ²Employment categories consistent with the definitions given by the US Office of Personnel Management "Introduction to the Position Classification Standards" 2009. For a description of the employment categories, refer to www.opm.gov/policy-data-oversight/classification-qualifications/classifying-general-schedule-positions/positionclassificationintro.pdf.

Who are the Civilian Federal Employees in

Wisconsin - 2017

Federal Workers in Wisconsin: 16,866

Percentage Who Are Veterans: 26.45%

Non-Federal Workers in Wisconsin: 2,984,000¹

Percentage Who Are Veterans: 6.00%²

Five Largest Federal Employers

VA: 8,862



Army: 1,820



Agriculture: 1,424



DHS: 743



Justice: 700



Race and Ethnicity

White, non-Hispanic	14,090	83.5%
Black/African American, non-Hispanic	1,287	7.6%
Hispanic or Latino	632	3.7%
Asian, non-Hispanic	446	2.6%
Two or more races	185	1.1%
American Indian and Alaska Native	201	1.2%
Native Hawaiian and Other Pacific Islander	20	0.1%

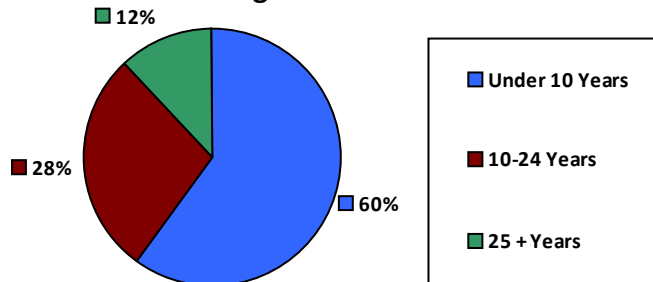
Gender

M	8,073	47.9%
F	8,791	52.1%

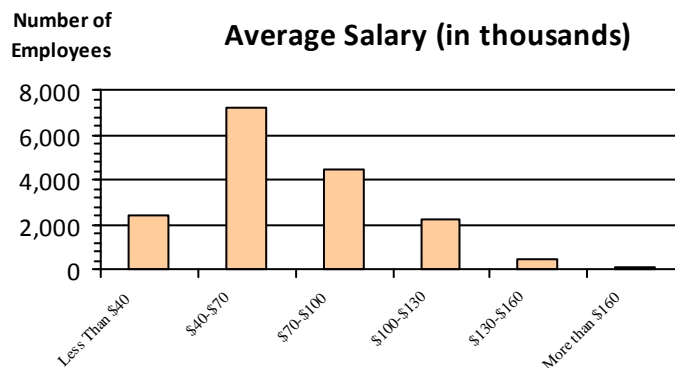
Age

<35	3,853	22.8%
35-54	8,755	51.9%
55+	4,258	25.2%

Length of Service



Average Salary (in thousands)



Educational Attainment

HS or Below	3,355	19.9%
Occupational Program	996	5.9%
Between HS and Bachelors	3,890	23.1%
Bachelors + Post Bachelors	5,963	35.4%
Masters and Post Grad	1,975	11.7%
Doctorate and Post Doc	664	3.9%

Type of Employment²

Administrative	4,269	25.3%
Professional	5,474	32.5%
Technical	4,029	23.9%
Clerical	1,174	7.0%
Other White Collar	354	2.1%
Blue Collar	1,565	9.3%

All data unless otherwise noted is provided by the US Office of Personnel Management for the December 2017 reporting period. Non-Federal Workers Data calculated from the US Bureau of Labor Statistics 2017 Annual Averages <https://www.bls.gov/news.release/vet.htm>.¹ Employment categories consistent with the definitions given by the US Office of Personnel Management "Introduction to the Position Classification Standards" (Revised: 2009), available at <https://www.opm.gov/policy-data-oversight/classification-qualifications/classifying-general-schedule-positions/positionclassificationintro.pdf>.²

Who are the Civilian Federal Employees in

Wisconsin - 2016

Federal Workers in Wisconsin: 16,838

Percentage Who Are Veterans: 26.22%

Non-Federal Workers in Wisconsin: 2,926,000¹

Percentage Who Are Veterans: 6.22%¹

Five Largest Federal Employers

VA: 8,725



Army: 1,810



Agriculture: 1,465



DHS: 737



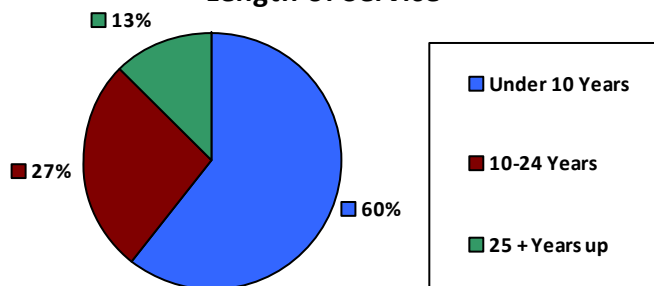
Justice: 722



Race and Ethnicity

White, non-Hispanic	14,167	84.1%
Black/African American, non-Hispanic	1,263	7.5%
Hispanic or Latino	591	3.5%
Asian, non-Hispanic	414	2.5%
Two or more races	182	1.1%
American Indian and Alaska Native	205	1.2%
Native Hawaiian and Other Pacific Islander	12	0.1%

Length of Service



Educational Attainment

HS or Below	3,416	20.3%
Occupational Program	1,031	6.1%
Between HS and Bachelors	3,831	22.7%
Bachelors + Post Bachelors	5,959	35.4%
Masters and Post Grad	1,931	11.5%
Doctorate and Post Doc	653	3.9%

Gender

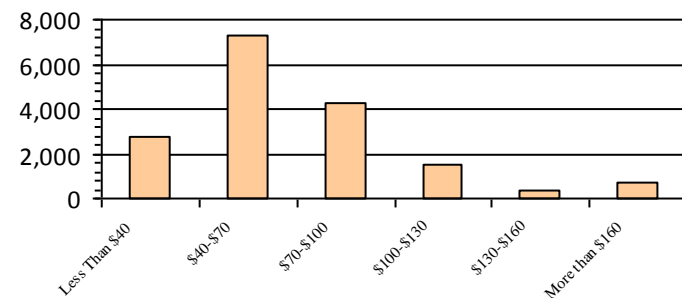
M	8,179	48.6%
F	8,654	51.4%

Age

<35	4,047	24.0%
35-54	8,574	50.9%
55+	4,217	25.0%

Number of Employees

Average Salary (in thousands)



Type of Employment²

Administrative	4,170	24.8%
Professional	5,386	32.0%
Technical	4,112	24.4%
Clerical	1,200	7.1%
Other White Collar	377	2.2%
Blue Collar	1,592	9.5%

All data unless otherwise noted is provided by the US Office of Personnel Management for the December 2016 reporting period. ¹Non-Federal Workers Data calculated from the US Bureau of Labor Statistics 2015 Annual Averages https://www.bls.gov/news.release/archives/vet_03222016.pdf. ²Employment categories consistent with the definitions given by the US Office of Personnel Management "Introduction to the Position Classification Standards" 2009. For a description of the employment categories, refer to <http://www.opm.gov/policy-data-oversight/classification-qualifications/classifying-general-schedule-positions/positionclassificationintro.pdf>.

Who are the Civilian Federal Employees in

Wisconsin - 2015

Federal Workers in Wisconsin: 16,589

Percentage Who Are Veterans: 26.33%

Non-Federal Workers in Wisconsin: 2,881,000¹

Percentage Who Are Veterans: 7.18%¹

Five Largest Federal Employers

VA: 8,558



Army: 1,795



Agriculture: 1,437



Justice: 725



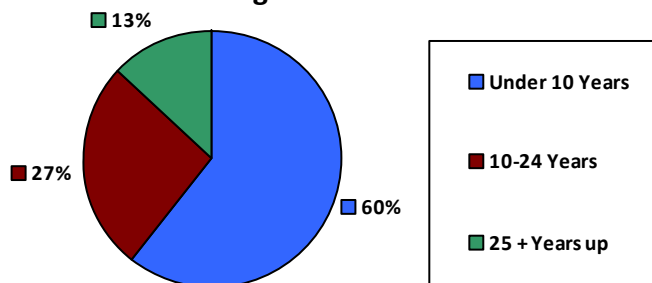
DHS: 706



Race and Ethnicity

White, non-Hispanic	14,018	84.5%
Black/African American, non-Hispanic	1,228	7.4%
Hispanic or Latino	549	3.3%
Asian, non-Hispanic	401	2.4%
Two or more races	169	1.0%
American Indian and Alaska Native	210	1.3%
Native Hawaiian and Other Pacific Islander	13	0.1%

Length of Service



Educational Attainment

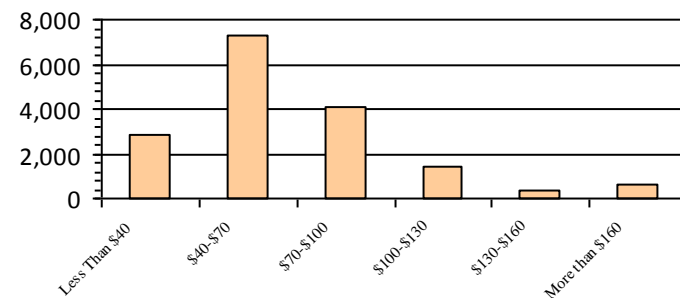
HS or Below	3,350	20.2%
Occupational Program	1,079	6.5%
Between HS and Bachelors	3,793	22.9%
Bachelors + Post Bachelors	5,907	35.6%
Masters and Post Grad	1,884	11.3%
Doctorate and Post Doc	561	3.4%

Gender

Age

M	8,082	48.7%	<35	3,978	24.0%
			35-54	8,416	50.7%
F	8,507	51.3%	55+	4,195	25.3%

Average Salary (in thousands)



Type of Employment²

Administrative	4,127	24.9%
Professional	5,275	31.8%
Technical	4,081	24.6%
Clerical	1,121	6.8%
Other White Collar	380	2.3%
Blue Collar	1,604	9.7%

All data unless otherwise noted is provided by the US Office of Personnel Management for the December 2015 reporting period. ¹Non-Federal Workers Data calculated from the US Bureau of Labor Statistics 2015 Annual Averages https://www.bls.gov/news.release/archives/vet_03222016.pdf. ²Employment categories consistent with the definitions given by the US Office of Personnel Management "Introduction to the Position Classification Standards" 2009. For a description of the employment categories, refer to <http://www.opm.gov/policy-data-oversight/classification-qualifications/classifying-general-schedule-positions/positionclassificationintro.pdf>.

Who are the Civilian Federal Employees in Wisconsin - 2014

Federal Workers in Wisconsin: 16,480
Percentage Who Are Veterans: 26.25%

Non-Federal Workers in Wisconsin: 2,851,000¹
*Percentage Who Are Veterans: 7.01%*¹

Five Largest Federal Employers

VA: 8,342



Army: 1,834



Agriculture: 1,421



Justice: 739



DHS: 727



Race and Ethnicity

White, non-Hispanic	14,006	85.0%
Black/African American, non-Hispanic	1,210	7.3%
Hispanic or Latino	528	3.2%
Asian, non-Hispanic	379	2.3%
Two or more races	139	0.8%
American Indian and Alaska Native	207	1.3%
Native Hawaiian and Other Pacific Islander	10	0.1%

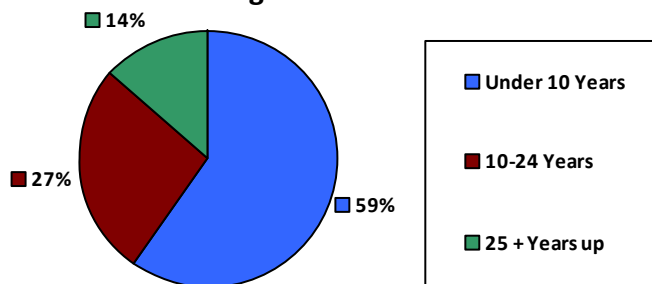
Gender

M	8,076	49.0%
F	8,404	51.0%

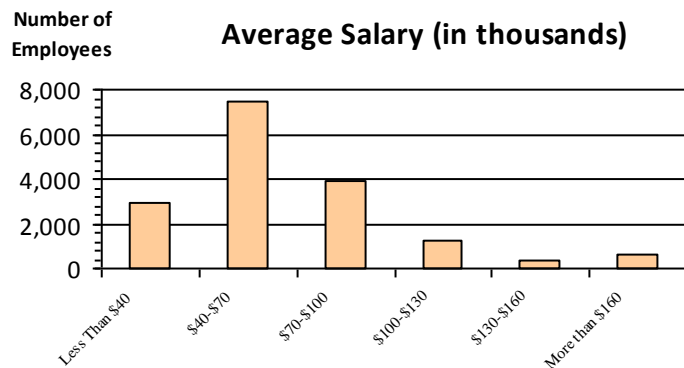
Age

<35	4,010	24.3%
35-54	8,303	50.4%
55+	4,167	25.3%

Length of Service



Average Salary (in thousands)



Educational Attainment

HS or Below	3,462	21.0%
Occupational Program	1,074	6.5%
Between HS and Bachelors	3,763	22.8%
Bachelors + Post Bachelors	5,791	35.1%
Masters and Post Grad	1,837	11.1%
Doctorate and Post Doc	532	3.2%

Type of Employment²

Administrative	4,123	25.0%
Professional	5,147	31.2%
Technical	4,182	25.4%
Clerical	1,049	6.4%
Other White Collar	381	2.3%
Blue Collar	1,597	9.7%

All data unless otherwise noted is provided by the US Office of Personnel Management for the December 2014 reporting period. ¹Non-Federal Workers Data calculated from the US Bureau of Labor Statistics 2014 Annual Averages https://www.bls.gov/news.release/archives/vet_03182015.pdf. ²Employment categories consistent with the definitions given by the US Office of Personnel Management "Introduction to the Position Classification Standards" 2009. For a description of the employment categories, refer to <http://www.opm.gov/policy-data-oversight/classification-qualifications/classifying-general-schedule-positions/positionclassificationintro.pdf>.

Who are the Civilian Federal Employees in

Wisconsin - 2013

Federal Workers in Wisconsin: 16,428

Percentage Who Are Veterans: 25.62%

Non-Federal Workers in Wisconsin: 2,824,000¹

Percentage Who Are Veterans: 6.69%¹

Five Largest Federal Employers

VA: 8,163



Army: 1,857



Agriculture: 1,432



DHS: 802



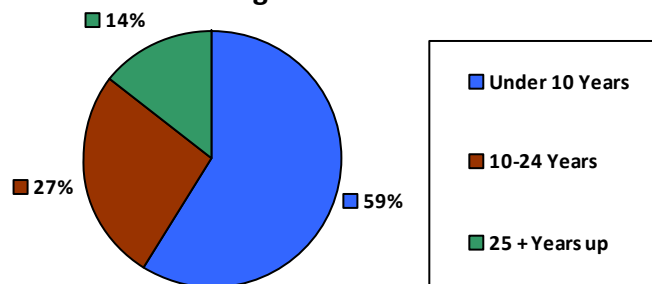
Justice: 716



Race and Ethnicity

White, non-Hispanic	14,001	85.2%
Black/African American, non-Hispanic	1,213	7.4%
Hispanic or Latino	501	3.0%
Asian, non-Hispanic	359	2.2%
Two or more races	132	0.8%
American Indian and Alaska Native	214	1.3%
Native Hawaiian and Other Pacific Islander	6	0.0%

Length of Service



Educational Attainment

HS or Below	3,545	21.6%
Occupational Program	1,091	6.6%
Between HS and Bachelors	3,781	23.0%
Bachelors + Post Bachelors	5,689	34.6%
Masters and Post Grad	1,789	10.9%
Doctorate and Post Doc	516	3.1%

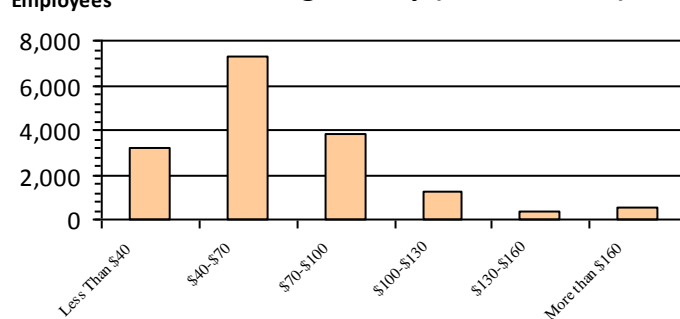
Gender

M	8,047	49.0%
F	8,381	51.0%

Age

<35	3,997	24.3%
35-54	8,234	50.1%
55+	4,197	25.5%

Average Salary (in thousands)



Type of Employment²

Administrative	4,108	25.0%
Professional	5,011	30.5%
Technical	4,065	24.7%
Clerical	1,226	7.5%
Other White Collar	395	2.4%
Blue Collar	1,619	9.9%

All data unless otherwise noted is provided by the US Office of Personnel Management for the December 2013 reporting period. ¹Non-Federal Workers Data calculated from the US Bureau of Labor Statistics 2013 Annual Averages https://www.bls.gov/news.release/archives/vet_03202014.pdf. ²Employment categories consistent with the definitions given by the US Office of Personnel Management "Introduction to the Position Classification Standards" 2009. For a description of the employment categories, refer to <http://www.opm.gov/policy-data-oversight/classification-qualifications/classifying-general-schedule-positions/positionclassificationintro.pdf>.