

# Who are the Civilian Federal Employees in Washington - 2022

**Federal Workers in Washington: 60,603**

Percentage Who Are Veterans: 34.79%

**Non-Federal Workers in Washington: 3,769,000<sup>1</sup>**

Percentage Who Are Veterans: 6.29%<sup>1</sup>

## Five Largest Federal Employers

Navy: 19,502



VA: 9,679



Army: 5,659



DHS: 4,590



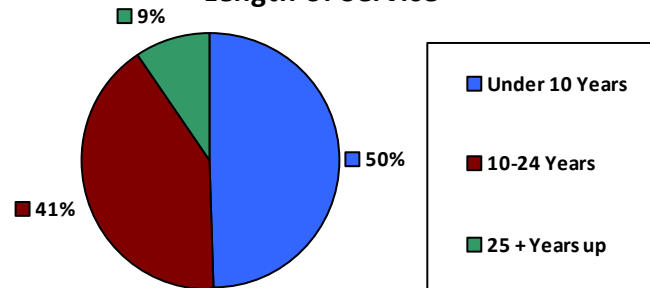
Defense: 4,380



### Race and Ethnicity

White, non-Hispanic	43,860	72.4%
Black/African American, non-Hispanic	3,416	5.6%
Hispanic or Latino	3,579	5.9%
Asian, non-Hispanic	5,341	8.8%
Two or more races	2,271	3.7%
American Indian and Alaska Native	978	1.6%
Native Hawaiian and Other Pacific Islander	928	1.5%

### Length of Service



### Educational Attainment

HS or Below	19,377	32.0%
Occupational Program	1,362	2.2%
Between HS and Bachelors	13,121	21.6%
Bachelors + Post Bachelors	17,714	29.2%
Masters and Post Grad	7,261	12.0%
Doctorate and Post Doc	1,727	2.8%

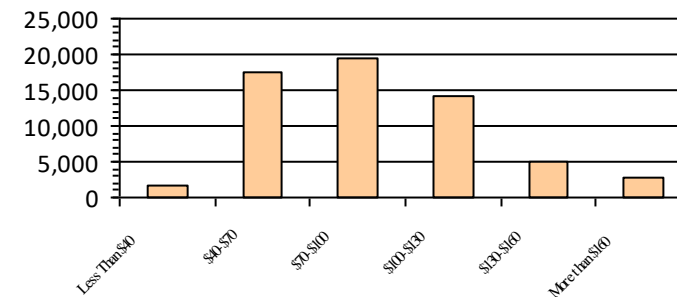
### Gender

M	38,312	63.2%
F	22,291	36.8%

### Age

<35	12,125	20.0%
35-54	32,070	52.9%
55+	16,408	27.1%

### Average Salary (in thousands)



### Type of Employment<sup>2</sup>

Administrative	18,736	30.9%
Professional	15,069	24.9%
Technical	9,574	15.8%
Clerical	2,743	4.5%
Other White Collar	1,746	2.9%
Blue Collar	12,711	21.0%

All data unless otherwise noted is provided by the US Office of Personnel Management for the December 2022 reporting period. <sup>1</sup>Non-Federal Workers Data calculated from the US Bureau of Labor Statistics 2022 Annual Averages <https://www.bls.gov/news.release/pdf/vet.pdf>. <sup>2</sup>Employment categories consistent with the definitions given by the US Office of Personnel Management "Introduction to the Position Classification Standards" 2009. For a description of the employment categories, refer to <http://www.opm.gov/policy-data-oversight/classification-qualifications/classifying-general-schedule-positions/positionclassificationintro.pdf>.