

Who are the Civilian Federal Employees in Washington - 2021

Federal Workers in Washington: 60,864
 Percentage Who Are Veterans: 35.67%

Non-Federal Workers in Washington: 3,662,000¹
 Percentage Who Are Veterans: 6.31%¹

Five Largest Federal Employers

Navy: 19,903

VA: 9,706

Army: 8,458

DHS: 4,468

DOT: 2,229



Race and Ethnicity

White, non-Hispanic	44,668	73.4%
Black/African American, non-Hispanic	3,443	5.7%
Hispanic or Latino	3,418	5.6%
Asian, non-Hispanic	5,155	8.5%
Two or more races	2,100	3.4%
American Indian and Alaska Native	984	1.6%
Native Hawaiian and Other Pacific Islander	866	1.4%

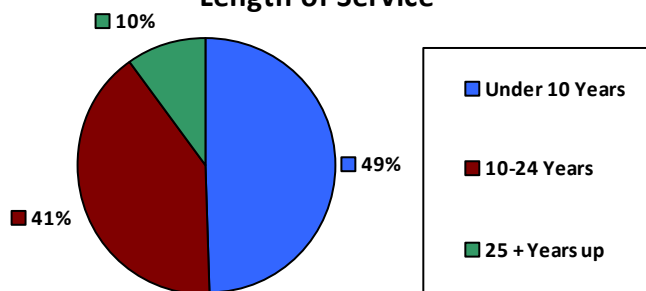
Gender

M	38,592	63.4%
F	22,272	36.6%

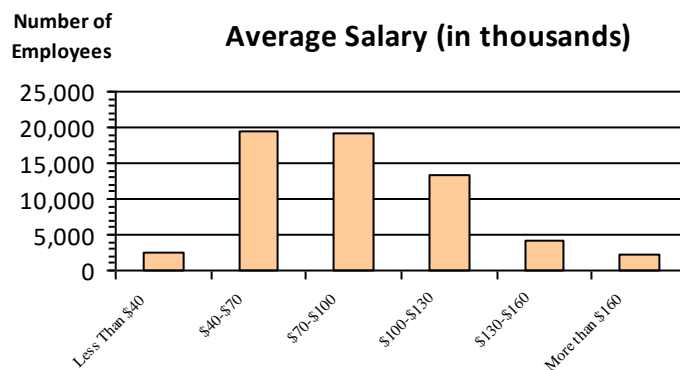
Age

<35	12,149	20.0%
35-54	31,983	52.5%
55+	16,732	27.5%

Length of Service



Average Salary (in thousands)



Educational Attainment

HS or Below	19,478	32.0%
Occupational Program	1,458	2.4%
Between HS and Bachelors	13,225	21.7%
Bachelors + Post Bachelors	17,817	29.3%
Masters and Post Grad	7,155	11.7%
Doctorate and Post Doc	1,688	2.8%

Type of Employment²

Administrative	15,005	24.7%
Professional	10,285	16.9%
Technical	2,750	4.5%
Clerical	1,765	2.9%
Other White Collar	12,820	21.1%
Blue Collar	13,280	21.8%

All data unless otherwise noted is provided by the US Office of Personnel Management for the December 2015 reporting period. ¹Non-Federal Workers Data calculated from the US Bureau of Labor Statistics 2015 Annual Averages https://www.bls.gov/news.release/archives/vet_03222016.pdf. ²Employment categories consistent with the definitions given by the US Office of Personnel Management "Introduction to the Position Classification Standards" 2009. For a description of the employment categories, refer to <http://www.opm.gov/policy-data-oversight/classification-qualifications/classifying-general-schedule-positions/positionclassificationintro.pdf>.

Who are the Civilian Federal Employees in Washington - 2020

Federal Workers in Washington: 61,554

Percentage Who Are Veterans: 36.40%

Non-Federal Workers in Washington: 3,581,000¹

Percentage Who Are Veterans: 6.67%¹

Five Largest Federal Employers

VA: 9,837



Army: 1,892



Agriculture: 1,522



DHS: 748



Justice: 747



Race and Ethnicity

White, non-Hispanic	45,654	74.2%
Black/African American, non-Hispanic	3,488	5.7%
Hispanic or Latino	3,331	5.4%
Asian, non-Hispanic	5,021	8.2%
Two or more races	2,019	3.3%
American Indian and Alaska Native	991	1.6%
Native Hawaiian and Other Pacific Islander	854	1.4%

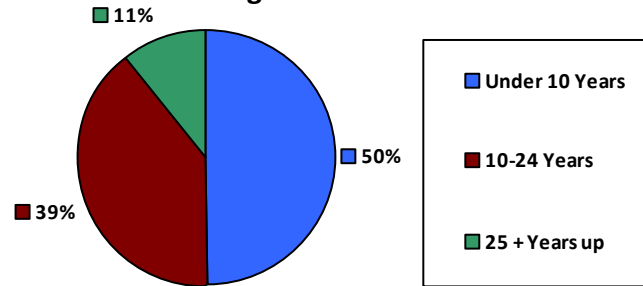
Gender

M	39,215	63.7%
F	22,339	36.3%

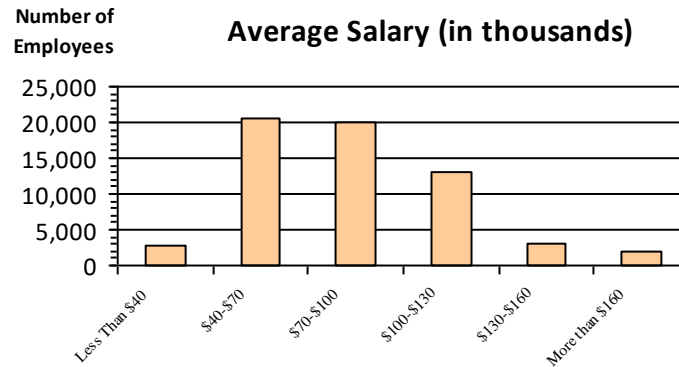
Age

<35	12,795	20.8%
35-54	31,746	51.6%
55+	17,012	27.6%

Length of Service



Average Salary (in thousands)



Educational Attainment

HS or Below	19,743	32.1%
Occupational Program	1,549	2.5%
Between HS and Bachelors	13,595	22.1%
Bachelors + Post Bachelors	17,921	29.1%
Masters and Post Grad	7,055	11.5%
Doctorate and Post Doc	1,616	2.6%

Type of Employment²

Administrative	18,019	29.3%
Professional	14,869	24.2%
Technical	10,714	17.4%
Clerical	2,801	4.6%
Other White Collar	1,849	3.0%
Blue Collar	13,280	21.6%

All data unless otherwise noted is provided by the US Office of Personnel Management for the December 2015 reporting period. ¹Non-Federal Workers Data calculated from the US Bureau of Labor Statistics 2015 Annual Averages https://www.bls.gov/news.release/archives/vet_03222016.pdf. ²Employment categories consistent with the definitions given by the US Office of Personnel Management "Introduction to the Position Classification Standards" 2009. For a description of the employment categories, refer to <http://www.opm.gov/policy-data-oversight/classification-qualifications/classifying-general-schedule-positions/positionclassificationintro.pdf>.

Who are the Civilian Federal Employees in Washington - 2019

Federal Workers in Washington: 61,042

Percentage Who Are Veterans: 36.84%

Non-Federal Workers in Washington: 3,766,000¹

Percentage Who Are Veterans: 6.98%¹

Five Largest Federal Employers

Navy: 20,285



Army: 9,142



VA: 8,666



DHS: 4,717



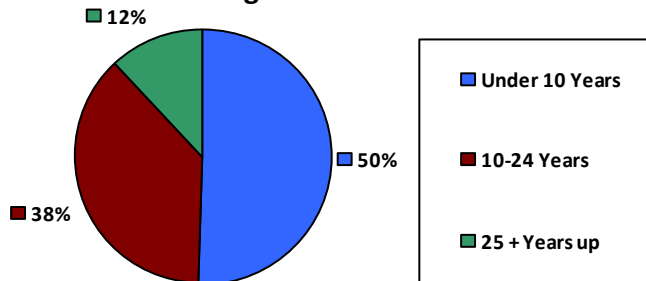
DOT: 2,219



Race and Ethnicity

White, non-Hispanic	43,164	70.7%
Black/African American, non-Hispanic	3,416	5.6%
Hispanic or Latino	3,103	5.1%
Asian, non-Hispanic	4,656	7.6%
Two or more races	1,876	3.1%
American Indian and Alaska Native	909	1.5%
Native Hawaiian and Other Pacific Islander	819	1.3%

Length of Service



Educational Attainment

HS or Below	19,176	31.4%
Occupational Program	1,986	3.3%
Between HS and Bachelors	13,834	22.7%
Bachelors + Post Bachelors	17,455	28.6%
Masters and Post Grad	6,799	11.1%
Doctorate and Post Doc	1,740	2.9%

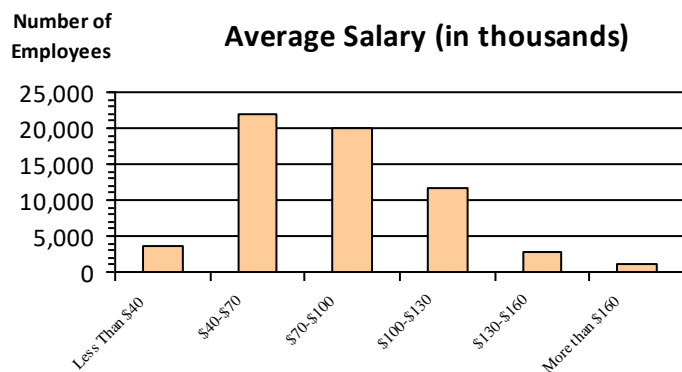
Gender

M	39,190	64.2%
F	21,851	35.8%

Age

<35	12,857	21.1%
35-54	31,134	51.0%
55+	17,051	27.9%

Average Salary (in thousands)



Type of Employment²

Administrative	17,712	29.0%
Professional	14,601	23.9%
Technical	10,459	17.1%
Clerical	2,971	4.9%
Other White Collar	1,817	3.0%
Blue Collar	13,456	22.0%

All data unless otherwise noted is provided by the US Office of Personnel Management for the December 2015 reporting period. ¹Non-Federal Workers Data calculated from the US Bureau of Labor Statistics 2015 Annual Averages https://www.bls.gov/news.release/archives/vet_03222016.pdf. ²Employment categories consistent with the definitions given by the US Office of Personnel Management "Introduction to the Position Classification Standards" 2009. For a description of the employment categories, refer to <http://www.opm.gov/policy-data-oversight/classification-qualifications/classifying-general-schedule-positions/positionclassificationintro.pdf>.

Who are the Civilian Federal Employees in Washington - 2018

Federal Workers in Washington: 60,307

Percentage Who Are Veterans: 37.32%

Non-Federal Workers in Washington: 3,579,000¹

Percentage Who Are Veterans: 6.84%¹

Five Largest Federal Employers

Navy: 19,655



Army: 9,442



VA: 8,411



DHS: 4,519



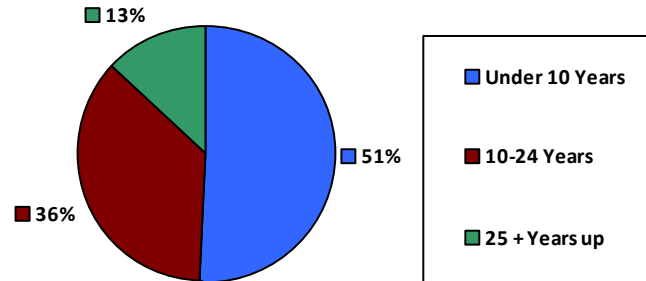
DOT: 2,179



Race and Ethnicity

White, non-Hispanic	42,876	71.1%
Black/African American, non-Hispanic	3,347	5.5%
Hispanic or Latino	2,915	4.8%
Asian, non-Hispanic	4,426	7.3%
Two or more races	1,695	2.8%
American Indian and Alaska Native	933	1.5%
Native Hawaiian and Other Pacific Islander	753	1.2%

Length of Service



Educational Attainment

HS or Below	18,438	30.6%
Occupational Program	2,101	3.5%
Between HS and Bachelors	13,942	23.1%
Bachelors + Post Bachelors	17,394	28.8%
Masters and Post Grad	6,693	11.1%
Doctorate and Post Doc	1,696	2.8%

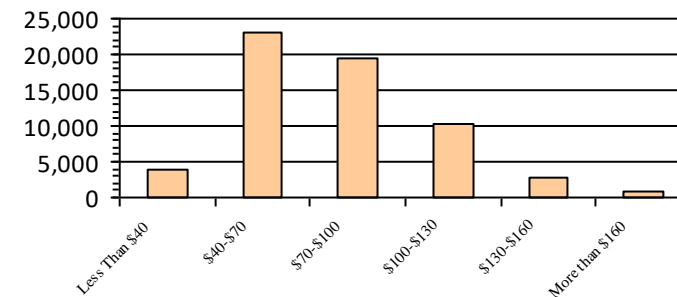
Gender

M	38,769	64.3%
F	21,508	35.7%

Age

<35	12,576	20.9%
35-54	30,754	51.0%
55+	16,977	28.1%

Average Salary (in thousands)



Type of Employment²

Administrative	17,262	28.6%
Professional	14,603	24.2%
Technical	10,628	17.6%
Clerical	2,862	4.7%
Other White Collar	1,722	2.9%
Blue Collar	13,210	21.9%

All data unless otherwise noted is provided by the US Office of Personnel Management for the December 2018 reporting period. ¹Non-Federal Workers Data calculated from the US Bureau of Labor Statistics 2018 Annual Averages www.bls.gov/news.release/pdf/vet.pdf. ²Employment categories consistent with the definitions given by the US Office of Personnel Management "Introduction to the Position Classification Standards" 2009. For a description of the employment categories, refer to www.opm.gov/policy-data-oversight/classification-qualifications/classifying-general-schedule-positions/positionclassificationintro.pdf.

Who are the Civilian Federal Employees in Washington - 2017

Federal Workers in Washington: 59,864

Percentage Who Are Veterans: 37.51%

Non-Federal Workers in Washington: 3,506,000¹

Percentage Who Are Veterans: 7.25%²

Five Largest Federal Employers

Navy: 19,237



Army: 9,475



VA: 8,146



DHS: 4,409



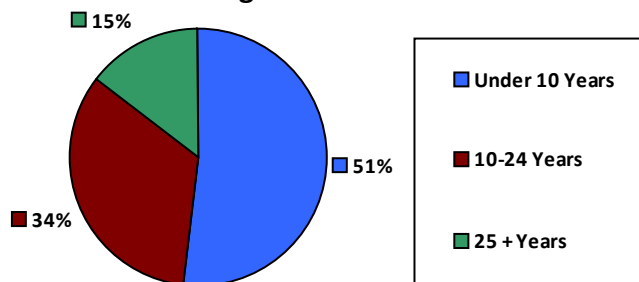
DOT: 2,255



Race and Ethnicity

White, non-Hispanic	45,885	76.6%
Black/African American, non-Hispanic	3,385	5.7%
Hispanic or Latino	2,837	4.7%
Asian, non-Hispanic	4,514	7.5%
Two or more races	1,493	2.5%
American Indian and Alaska Native	996	1.7%
Native Hawaiian and Other Pacific Islander	722	1.2%

Length of Service



Educational Attainment

HS or Below	18,183	30.4%
Occupational Program	2,199	3.7%
Between HS and Bachelors	14,023	23.4%
Bachelors + Post Bachelors	17,177	28.7%
Masters and Post Grad	6,576	11.0%
Doctorate and Post Doc	1,668	2.8%

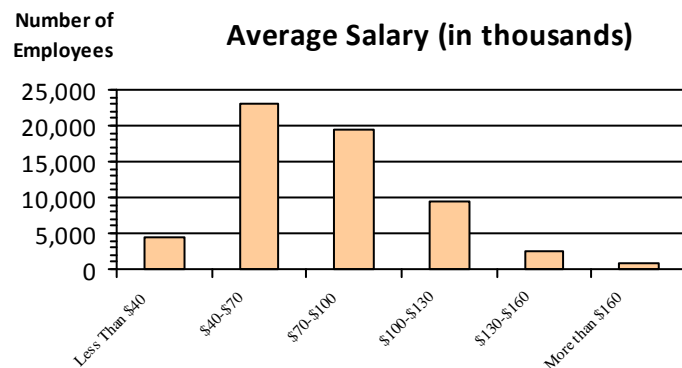
Gender

M	38,561	64.4%
F	21,301	35.6%

Age

<35	12,366	20.7%
35-54	30,437	50.8%
55+	17,061	28.5%

Average Salary (in thousands)



Type of Employment²

Administrative	17,046	28.5%
Professional	14,551	24.3%
Technical	10,773	18.0%
Clerical	2,791	4.7%
Other White Collar	1,675	2.8%
Blue Collar	13,022	21.8%

All data unless otherwise noted is provided by the US Office of Personnel Management for the December 2017 reporting period. Non-Federal Workers Data calculated from the US Bureau of Labor Statistics 2017 Annual Averages <https://www.bls.gov/news.release/vet.htm>.¹ Employment categories consistent with the definitions given by the US Office of Personnel Management "Introduction to the Position Classification Standards" (Revised: 2009), available at <https://www.opm.gov/policy-data-oversight/classification-qualifications/classifying-general-schedule-positions/positionclassificationintro.pdf>.²

Who are the Civilian Federal Employees in Washington - 2016

Federal Workers in Washington: 60,173

Percentage Who Are Veterans: 37.85%

Non-Federal Workers in Washington: 3,398,000¹

Percentage Who Are Veterans: 6.56%¹

Five Largest Federal Employers

Navy: 19,162



Army: 9,697



VA: 7,912



DHS: 4,385



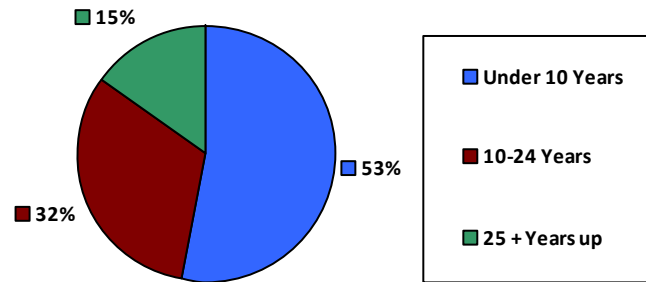
DOT: 2,294



Race and Ethnicity

White, non-Hispanic	46,670	77.6%
Black/African American, non-Hispanic	3,316	5.5%
Hispanic or Latino	2,697	4.5%
Asian, non-Hispanic	4,408	7.3%
Two or more races	1,390	2.3%
American Indian and Alaska Native	1,038	1.7%
Native Hawaiian and Other Pacific Islander	631	1.0%

Length of Service



Educational Attainment

HS or Below	18,271	30.4%
Occupational Program	2,322	3.9%
Between HS and Bachelors	14,272	23.7%
Bachelors + Post Bachelors	17,232	28.6%
Masters and Post Grad	6,442	10.7%
Doctorate and Post Doc	1,609	2.7%

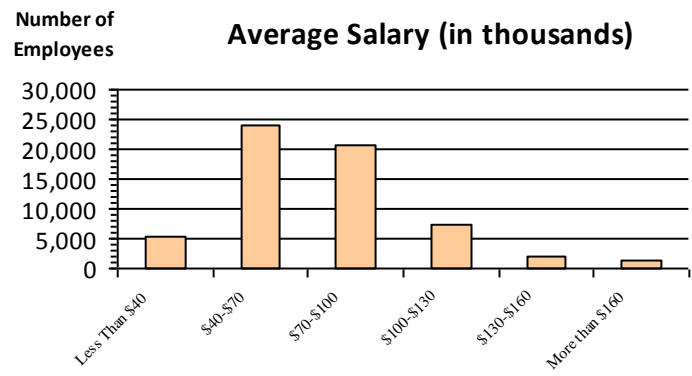
Gender

M	38,828	64.5%
F	21,337	35.5%

Age

<35	12,576	20.9%
35-54	30,579	50.8%
55+	17,018	28.3%

Average Salary (in thousands)



Type of Employment²

Administrative	17,017	28.3%
Professional	14,549	24.2%
Technical	10,966	18.2%
Clerical	2,954	4.9%
Other White Collar	1,718	2.9%
Blue Collar	12,964	21.5%

All data unless otherwise noted is provided by the US Office of Personnel Management for the December 2016 reporting period. ¹Non-Federal Workers Data calculated from the US Bureau of Labor Statistics 2015 Annual Averages https://www.bls.gov/news.release/archives/vet_03222016.pdf. ²Employment categories consistent with the definitions given by the US Office of Personnel Management "Introduction to the Position Classification Standards" 2009. For a description of the employment categories, refer to <http://www.opm.gov/policy-data-oversight/classification-qualifications/classifying-general-schedule-positions/positionclassificationintro.pdf>.

Who are the Civilian Federal Employees in Washington - 2015

Federal Workers in Washington: 59,363

Percentage Who Are Veterans: 37.84%

Non-Federal Workers in Washington: 3,306,000¹

Percentage Who Are Veterans: 7.80%¹

Five Largest Federal Employers

Navy: 18,854



Army: 9,568



VA: 7,680



DHS: 4,226



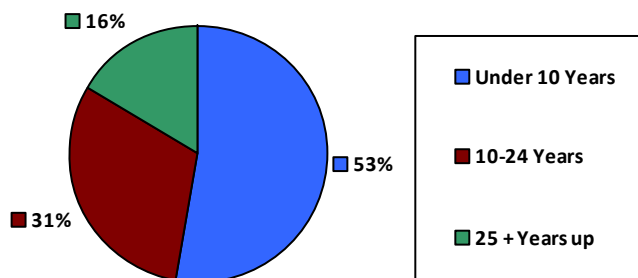
DOT: 2,292



Race and Ethnicity

White, non-Hispanic	46,415	78.2%
Black/African American, non-Hispanic	3,213	5.4%
Hispanic or Latino	2,566	4.3%
Asian, non-Hispanic	4,328	7.3%
Two or more races	1,218	2.1%
American Indian and Alaska Native	1,035	1.7%
Native Hawaiian and Other Pacific Islander	576	1.0%

Length of Service



Educational Attainment

HS or Below	18,077	30.4%
Occupational Program	2,366	4.0%
Between HS and Bachelors	14,129	23.8%
Bachelors + Post Bachelors	17,041	28.7%
Masters and Post Grad	6,255	10.5%
Doctorate and Post Doc	1,466	2.5%

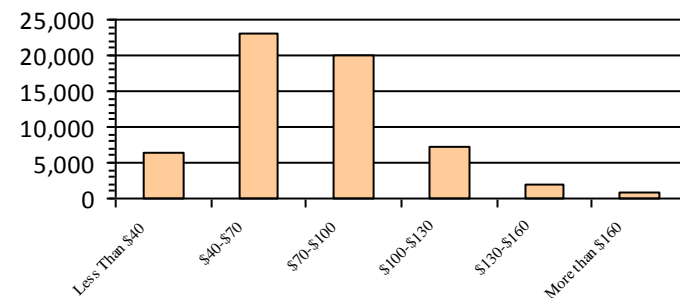
Gender

M	38,309	64.5%
F	21,054	35.5%

Age

<35	12,465	21.0%
35-54	30,027	50.6%
55+	16,871	28.4%

Average Salary (in thousands)



Type of Employment²

Administrative	16,695	28.1%
Professional	14,290	24.1%
Technical	11,079	18.7%
Clerical	2,667	4.5%
Other White Collar	1,665	2.8%
Blue Collar	12,960	21.8%

All data unless otherwise noted is provided by the US Office of Personnel Management for the December 2015 reporting period. ¹Non-Federal Workers Data calculated from the US Bureau of Labor Statistics 2015 Annual Averages https://www.bls.gov/news.release/archives/vet_03222016.pdf. ²Employment categories consistent with the definitions given by the US Office of Personnel Management "Introduction to the Position Classification Standards" 2009. For a description of the employment categories, refer to <http://www.opm.gov/policy-data-oversight/classification-qualifications/classifying-general-schedule-positions/positionclassificationintro.pdf>.

Who are the Civilian Federal Employees in Washington - 2014

Federal Workers in Washington: 57,547
Percentage Who Are Veterans: 37.85%

Non-Federal Workers in Washington: 3,236,000¹
Percentage Who Are Veterans: 9.36%¹

Five Largest Federal Employers

Navy: 17,504



Army: 9,474



VA: 7,348



DHS: 4,235



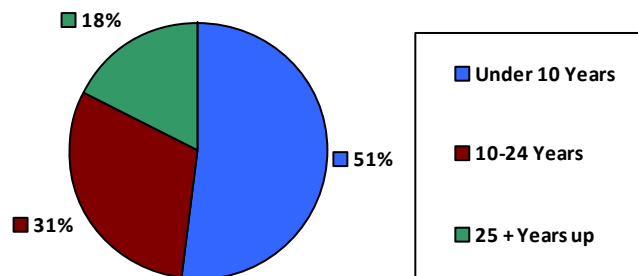
DOT: 2,256



Race and Ethnicity

White, non-Hispanic	45,262	78.6%
Black/African American, non-Hispanic	3,126	5.4%
Hispanic or Latino	2,414	4.2%
Asian, non-Hispanic	4,219	7.3%
Two or more races	1,060	1.8%
American Indian and Alaska Native	982	1.7%
Native Hawaiian and Other Pacific Islander	473	0.8%

Length of Service



Educational Attainment

HS or Below	17,500	30.4%
Occupational Program	2,340	4.1%
Between HS and Bachelors	13,994	24.3%
Bachelors + Post Bachelors	16,437	28.6%
Masters and Post Grad	5,865	10.2%
Doctorate and Post Doc	1,379	2.4%

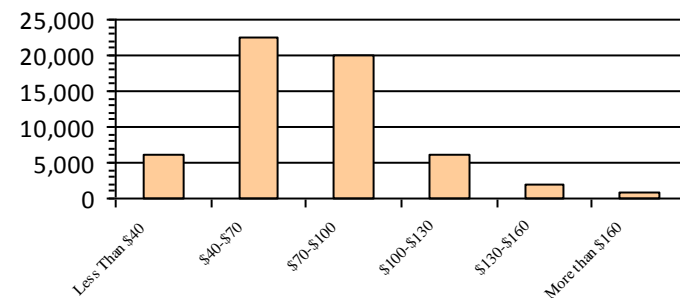
Gender

M	37,107	64.5%
F	20,440	35.5%

Age

<35	11,581	20.1%
35-54	29,308	50.9%
55+	16,658	28.9%

Average Salary (in thousands)



Type of Employment²

Administrative	16,380	28.5%
Professional	13,778	23.9%
Technical	10,895	18.9%
Clerical	2,514	4.4%
Other White Collar	1,610	2.8%
Blue Collar	12,364	21.5%

All data unless otherwise noted is provided by the US Office of Personnel Management for the December 2014 reporting period. ¹Non-Federal Workers Data calculated from the US Bureau of Labor Statistics 2014 Annual Averages https://www.bls.gov/news.release/archives/vet_03182015.pdf. ²Employment categories consistent with the definitions given by the US Office of Personnel Management "Introduction to the Position Classification Standards" 2009. For a description of the employment categories, refer to <http://www.opm.gov/policy-data-oversight/classification-qualifications/classifying-general-schedule-positions/positionclassificationintro.pdf>.

Who are the Civilian Federal Employees in Washington - 2013

Federal Workers in Washington: 56,301

Percentage Who Are Veterans: 37.88%

Non-Federal Workers in Washington: 3,204,000¹

Percentage Who Are Veterans: 10.27%¹

Five Largest Federal Employers

Navy: 16,155



Army: 9,797



VA: 7,072



DHS: 4,258



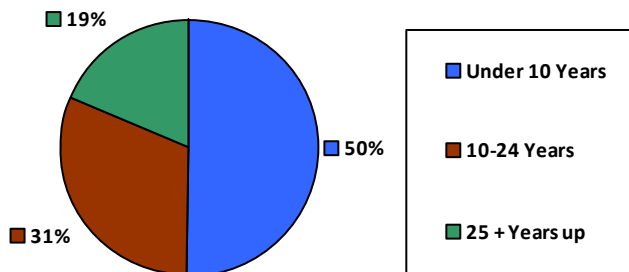
DOT: 2,208



Race and Ethnicity

White, non-Hispanic	44,455	79.0%
Black/African American, non-Hispanic	3,029	5.4%
Hispanic or Latino	2,317	4.1%
Asian, non-Hispanic	4,188	7.4%
Two or more races	903	1.6%
American Indian and Alaska Native	990	1.8%
Native Hawaiian and Other Pacific Islander	405	0.7%

Length of Service



Educational Attainment

HS or Below	16,575	29.4%
Occupational Program	2,354	4.2%
Between HS and Bachelors	14,044	24.9%
Bachelors + Post Bachelors	16,232	28.8%
Masters and Post Grad	5,722	10.2%
Doctorate and Post Doc	1,342	2.4%

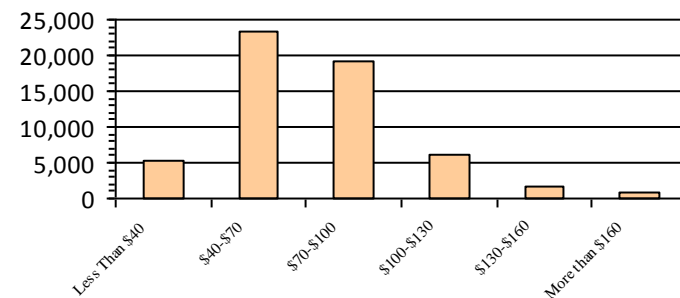
Gender

M	35,988	63.9%
F	20,313	36.1%

Age

<35	10,655	18.9%
35-54	28,813	51.2%
55+	16,833	29.9%

Average Salary (in thousands)



Type of Employment²

Administrative	16,352	29.0%
Professional	13,728	24.4%
Technical	10,475	18.6%
Clerical	2,773	4.9%
Other White Collar	1,648	2.9%
Blue Collar	11,317	20.1%

All data unless otherwise noted is provided by the US Office of Personnel Management for the December 2013 reporting period. ¹Non-Federal Workers Data calculated from the US Bureau of Labor Statistics 2013 Annual Averages https://www.bls.gov/news.release/archives/vet_03202014.pdf. ²Employment categories consistent with the definitions given by the US Office of Personnel Management "Introduction to the Position Classification Standards" 2009. For a description of the employment categories, refer to <http://www.opm.gov/policy-data-oversight/classification-qualifications/classifying-general-schedule-positions/positionclassificationintro.pdf>.