

## Who are the Civilian Federal Employees in

# Vermont - 2021

**Federal Workers in Vermont: 5,247**

Percentage Who Are Veterans: 20.31%

**Non-Federal Workers in Vermont: 304,000**<sup>1</sup>

Percentage Who Are Veterans: 4.60%<sup>1</sup>

### Five Largest Federal Employers

DHS: 2,741



VA: 1,325



Agriculture: 243



Army: 217



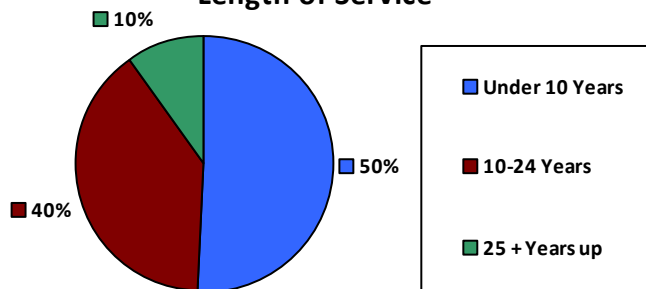
Air Force: 168



### Race and Ethnicity

White, non-Hispanic	4,789	91.3%
Black/African American, non-Hispanic	108	2.1%
Hispanic or Latino	158	3.0%
Asian, non-Hispanic	84	1.6%
Two or more races	63	1.2%
American Indian and Alaska Native	27	0.5%
Native Hawaiian and Other Pacific Islander	3	0.1%

### Length of Service



### Educational Attainment

HS or Below	1,412	26.9%
Occupational Program	63	1.2%
Between HS and Bachelors	1,131	21.6%
Bachelors + Post Bachelors	1,859	35.4%
Masters and Post Grad	637	12.1%
Doctorate and Post Doc	135	2.6%

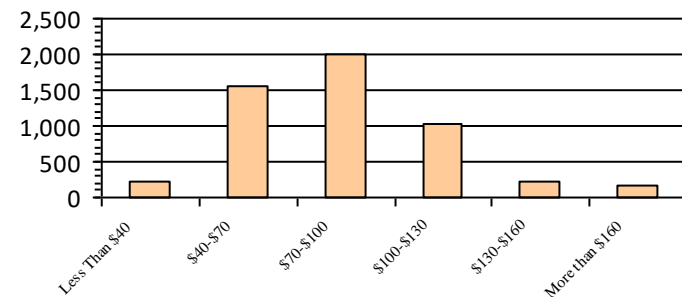
### Gender

M	2,675	51.0%
F	2,572	49.0%

### Age

<35	974	18.6%
35-54	2,846	54.2%
55+	1,427	27.2%

### Average Salary (in thousands)



### Type of Employment<sup>2</sup>

Administrative	1,074	20.5%
Professional	542	10.3%
Technical	244	4.6%
Clerical	176	3.4%
Other White Collar	212	4.0%
Blue Collar	292	5.6%

All data unless otherwise noted is provided by the US Office of Personnel Management for the December 2015 reporting period. <sup>1</sup>Non-Federal Workers Data calculated from the US Bureau of Labor Statistics 2015 Annual Averages [https://www.bls.gov/news.release/archives/vet\\_03222016.pdf](https://www.bls.gov/news.release/archives/vet_03222016.pdf). <sup>2</sup>Employment categories consistent with the definitions given by the US Office of Personnel Management "Introduction to the Position Classification Standards" 2009. For a description of the employment categories, refer to <http://www.opm.gov/policy-data-oversight/classification-qualifications/classifying-general-schedule-positions/positionclassificationintro.pdf>.

## Who are the Civilian Federal Employees in

# Vermont - 2020

**Federal Workers in Vermont: 5,410**

Percentage Who Are Veterans: 20.44%

**Non-Federal Workers in Vermont: 307,000**<sup>1</sup>

Percentage Who Are Veterans: 5.54%<sup>1</sup>

### Five Largest Federal Employers

Navy: 20,359



VA: 9,463



Army: 8,781



DHS: 4,586



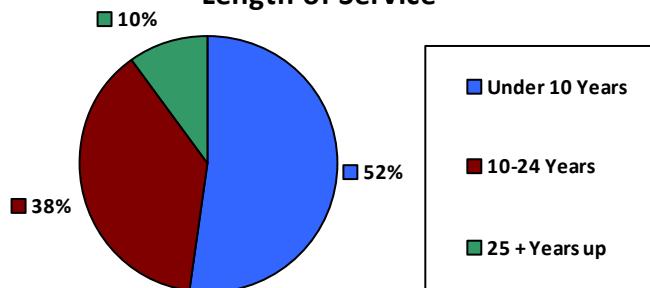
DOT: 2,271



### Race and Ethnicity

White, non-Hispanic	4,958	91.6%
Black/African American, non-Hispanic	105	1.9%
Hispanic or Latino	151	2.8%
Asian, non-Hispanic	83	1.5%
Two or more races	66	1.2%
American Indian and Alaska Native	30	0.6%
Native Hawaiian and Other Pacific Islander	3	0.1%

### Length of Service



### Educational Attainment

HS or Below	1,526	28.2%
Occupational Program	70	1.3%
Between HS and Bachelors	1,173	21.7%
Bachelors + Post Bachelors	1,865	34.5%
Masters and Post Grad	636	11.7%
Doctorate and Post Doc	129	2.4%

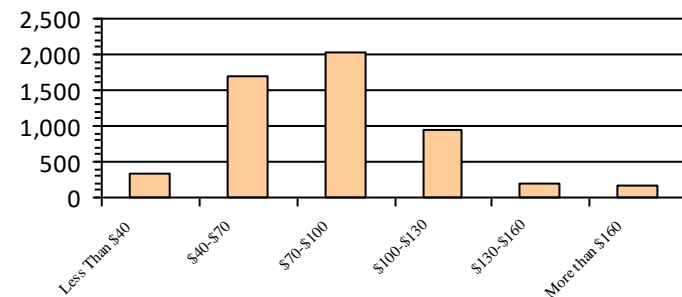
### Gender

M	2,801	51.8%
F	2,609	48.2%

### Age

<35	1,141	21.1%
35-54	2,830	52.3%
55+	1,439	26.6%

### Average Salary (in thousands)



### Type of Employment<sup>2</sup>

Administrative	3,044	56.3%
Professional	1,034	19.1%
Technical	591	10.9%
Clerical	265	4.9%
Other White Collar	178	3.3%
Blue Collar	292	5.4%

All data unless otherwise noted is provided by the US Office of Personnel Management for the December 2015 reporting period. <sup>1</sup>Non-Federal Workers Data calculated from the US Bureau of Labor Statistics 2015 Annual Averages [https://www.bls.gov/news.release/archives/vet\\_03222016.pdf](https://www.bls.gov/news.release/archives/vet_03222016.pdf). <sup>2</sup>Employment categories consistent with the definitions given by the US Office of Personnel Management "Introduction to the Position Classification Standards" 2009. For a description of the employment categories, refer to <http://www.opm.gov/policy-data-oversight/classification-qualifications/classifying-general-schedule-positions/positionclassificationintro.pdf>.

## Who are the Civilian Federal Employees in

# Vermont - 2019

**Federal Workers in Vermont: 5,484**

Percentage Who Are Veterans: 20.62%

**Non-Federal Workers in Vermont: 329,000**<sup>1</sup>

Percentage Who Are Veterans: 5.17%<sup>1</sup>

### Five Largest Federal Employers

DHS: 2,868



VA: 1,310



Army: 264



Air Force: 255



Agriculture: 237



### Race and Ethnicity

White, non-Hispanic	5,039	91.9%
Black/African American, non-Hispanic	106	1.9%
Hispanic or Latino	163	3.0%
Asian, non-Hispanic	76	1.4%
Two or more races	68	1.2%
American Indian and Alaska Native	24	0.4%
Native Hawaiian and Other Pacific Islander	5	0.1%

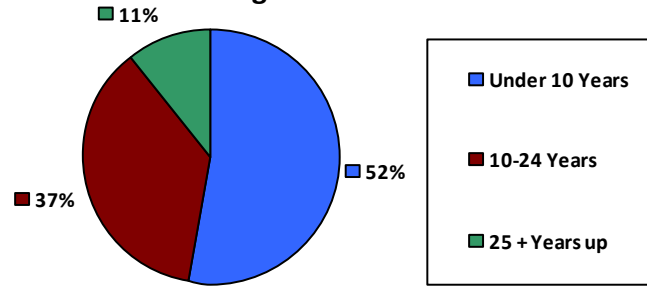
### Gender

M	2,856	52.1%
F	2,627	47.9%

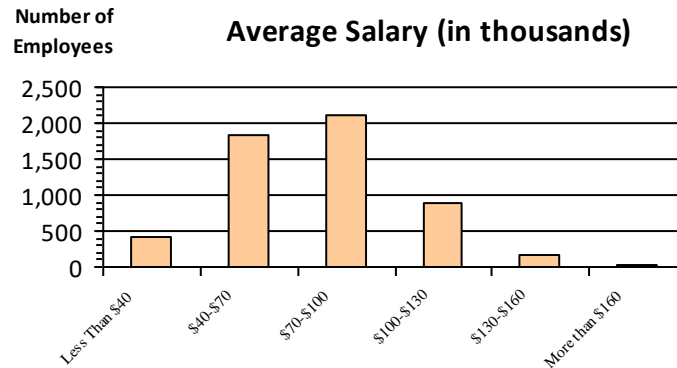
### Age

<35	1,219	22.2%
35-54	2,809	51.2%
55+	1,456	26.5%

### Length of Service



### Average Salary (in thousands)



### Educational Attainment

HS or Below	1,470	26.8%
Occupational Program	135	2.5%
Between HS and Bachelors	1,251	22.8%
Bachelors + Post Bachelors	1,845	33.6%
Masters and Post Grad	642	11.7%
Doctorate and Post Doc	128	2.3%

### Type of Employment<sup>2</sup>

Administrative	3,081	56.2%
Professional	1,020	18.6%
Technical	608	11.1%
Clerical	271	4.9%
Other White Collar	180	3.3%
Blue Collar	316	5.8%

All data unless otherwise noted is provided by the US Office of Personnel Management for the December 2015 reporting period. <sup>1</sup>Non-Federal Workers Data calculated from the US Bureau of Labor Statistics 2015 Annual Averages [https://www.bls.gov/news.release/archives/vet\\_03222016.pdf](https://www.bls.gov/news.release/archives/vet_03222016.pdf). <sup>2</sup>Employment categories consistent with the definitions given by the US Office of Personnel Management "Introduction to the Position Classification Standards" 2009. For a description of the employment categories, refer to <http://www.opm.gov/policy-data-oversight/classification-qualifications/classifying-general-schedule-positions/positionclassificationintro.pdf>.

## Who are the Civilian Federal Employees in

# Vermont - 2018

**Federal Workers in Vermont: 5,416**

Percentage Who Are Veterans: 20.38%

**Non-Federal Workers in Vermont: 330,000**<sup>1</sup>

Percentage Who Are Veterans: 4.85%<sup>1</sup>

### Five Largest Federal Employers

DHS: 2,829



VA: 1,276



Air Force: 265



Army: 259



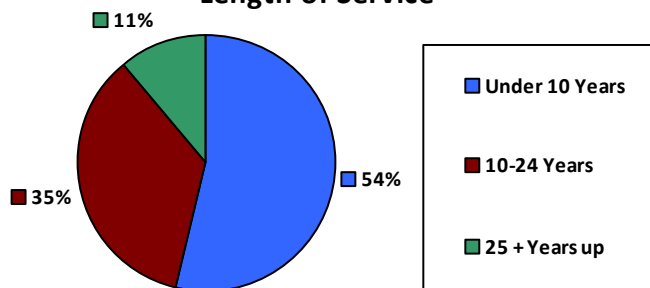
Agriculture: 243



### Race and Ethnicity

White, non-Hispanic	4,977	91.9%
Black/African American, non-Hispanic	108	2.0%
Hispanic or Latino	162	3.0%
Asian, non-Hispanic	77	1.4%
Two or more races	59	1.1%
American Indian and Alaska Native	27	0.5%
Native Hawaiian and Other Pacific Islander	6	0.1%

### Length of Service



### Educational Attainment

HS or Below	1,406	26.0%
Occupational Program	141	2.6%
Between HS and Bachelors	1,249	23.1%
Bachelors + Post Bachelors	1,839	34.0%
Masters and Post Grad	637	11.7%
Doctorate and Post Doc	129	2.4%

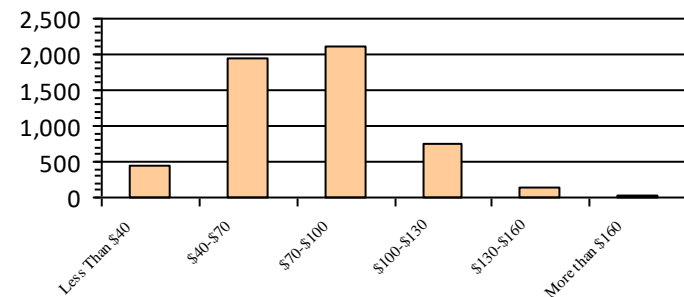
### Gender

M	2,829	52.2%
F	2,587	47.8%

### Age

<35	1,211	22.4%
35-54	2,796	51.6%
55+	1,409	26.0%

### Average Salary (in thousands)



### Type of Employment<sup>2</sup>

Administrative	3,018	55.7%
Professional	1,008	18.6%
Technical	620	11.4%
Clerical	269	5.0%
Other White Collar	188	3.5%
Blue Collar	308	5.7%

All data unless otherwise noted is provided by the US Office of Personnel Management for the December 2018 reporting period. <sup>1</sup>Non-Federal Workers Data calculated from the US Bureau of Labor Statistics 2018 Annual Averages [www.bls.gov/news.release/pdf/vet.pdf](http://www.bls.gov/news.release/pdf/vet.pdf). <sup>2</sup>Employment categories consistent with the definitions given by the US Office of Personnel Management "Introduction to the Position Classification Standards" 2009. For a description of the employment categories, refer to [www.opm.gov/policy-data-oversight/classification-qualifications/classifying-general-schedule-positions/positionclassificationintro.pdf](http://www.opm.gov/policy-data-oversight/classification-qualifications/classifying-general-schedule-positions/positionclassificationintro.pdf).

## Who are the Civilian Federal Employees in

# Vermont - 2017

**Federal Workers in Vermont: 5,369**

Percentage Who Are Veterans: 20.97%

**Non-Federal Workers in Vermont: 328,000**<sup>1</sup>

Percentage Who Are Veterans: 6.15%<sup>2</sup>

### Five Largest Federal Employers

DHS: 2,788



VA: 1,226



Air Force: 283



Army: 272



Agriculture: 251



### Race and Ethnicity

White, non-Hispanic	4,974	92.6%
Black/African American, non-Hispanic	93	1.7%
Hispanic or Latino	147	2.7%
Asian, non-Hispanic	73	1.4%
Two or more races	52	1.0%
American Indian and Alaska Native	22	0.4%
Native Hawaiian and Other Pacific Islander	6	0.1%

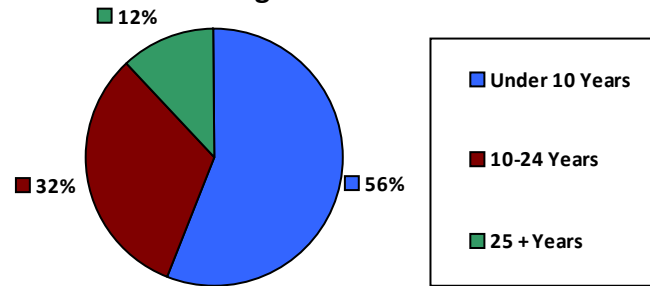
### Gender

M	2,846	53.0%
F	2,523	47.0%

### Age

<35	1,172	21.8%
35-54	2,767	51.5%
55+	1,430	26.6%

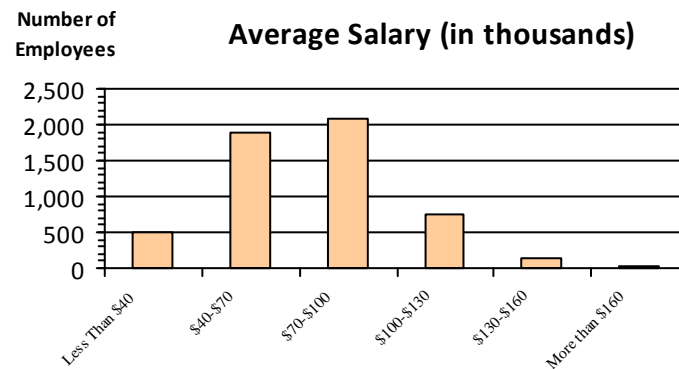
### Length of Service



### Educational Attainment

HS or Below	1,410	26.3%
Occupational Program	144	2.7%
Between HS and Bachelors	1,233	23.0%
Bachelors + Post Bachelors	1,833	34.1%
Masters and Post Grad	598	11.1%
Doctorate and Post Doc	141	2.6%

### Average Salary (in thousands)



### Type of Employment<sup>2</sup>

Administrative	2,949	54.9%
Professional	982	18.3%
Technical	660	12.3%
Clerical	273	5.1%
Other White Collar	183	3.4%
Blue Collar	322	6.0%

All data unless otherwise noted is provided by the US Office of Personnel Management for the December 2017 reporting period. Non-Federal Workers Data calculated from the US Bureau of Labor Statistics 2017 Annual Averages <https://www.bls.gov/news.release/vet.htm>.<sup>1</sup> Employment categories consistent with the definitions given by the US Office of Personnel Management "Introduction to the Position Classification Standards" (Revised: 2009), available at <https://www.opm.gov/policy-data-oversight/classification-qualifications/classifying-general-schedule-positions/positionclassificationintro.pdf>.<sup>2</sup>

## Who are the Civilian Federal Employees in

# Vermont - 2016

**Federal Workers in Vermont: 5,212**

Percentage Who Are Veterans: 21.62%

**Non-Federal Workers in Vermont: 328,000**<sup>1</sup>

Percentage Who Are Veterans: 7.01%<sup>1</sup>

### Five Largest Federal Employers

DHS: 2,648



VA: 1,305



Army: 290



Agriculture: 250



Air Force: 146



### Race and Ethnicity

White, non-Hispanic	4,862	93.3%
Black/African American, non-Hispanic	87	1.7%
Hispanic or Latino	126	2.4%
Asian, non-Hispanic	60	1.2%
Two or more races	48	0.9%
American Indian and Alaska Native	22	0.4%
Native Hawaiian and Other Pacific Islander	5	0.1%

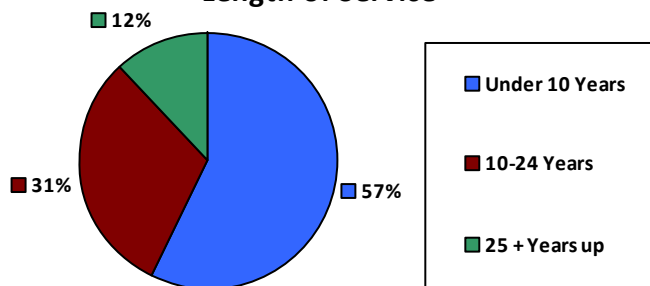
### Gender

M	2,697	51.8%
F	2,514	48.2%

### Age

<35	1,082	20.8%
35-54	2,714	52.1%
55+	1,416	27.2%

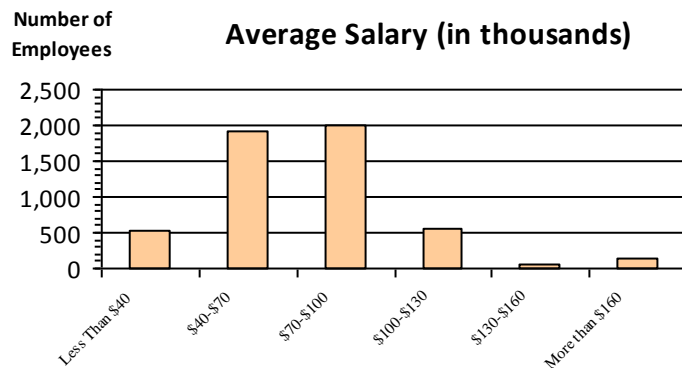
### Length of Service



### Educational Attainment

HS or Below	1,279	24.5%
Occupational Program	154	3.0%
Between HS and Bachelors	1,262	24.2%
Bachelors + Post Bachelors	1,790	34.3%
Masters and Post Grad	573	11.0%
Doctorate and Post Doc	146	2.8%

### Average Salary (in thousands)



### Type of Employment<sup>2</sup>

Administrative	2,838	54.4%
Professional	1,016	19.5%
Technical	662	12.7%
Clerical	287	5.5%
Other White Collar	178	3.4%
Blue Collar	231	4.4%

All data unless otherwise noted is provided by the US Office of Personnel Management for the December 2016 reporting period. <sup>1</sup>Non-Federal Workers Data calculated from the US Bureau of Labor Statistics 2015 Annual Averages [https://www.bls.gov/news.release/archives/vet\\_03222016.pdf](https://www.bls.gov/news.release/archives/vet_03222016.pdf). <sup>2</sup>Employment categories consistent with the definitions given by the US Office of Personnel Management "Introduction to the Position Classification Standards" 2009. For a description of the employment categories, refer to <http://www.opm.gov/policy-data-oversight/classification-qualifications/classifying-general-schedule-positions/positionclassificationintro.pdf>.

## Who are the Civilian Federal Employees in

# Vermont - 2015

**Federal Workers in Vermont: 5,201**

*Percentage Who Are Veterans: 21.26%*

**Non-Federal Workers in Vermont: 325,000**<sup>1</sup>

*Percentage Who Are Veterans: 6.46%*<sup>1</sup>

### Five Largest Federal Employers

DHS: 2,601



VA: 1,227



Army: 301



Air Force: 279



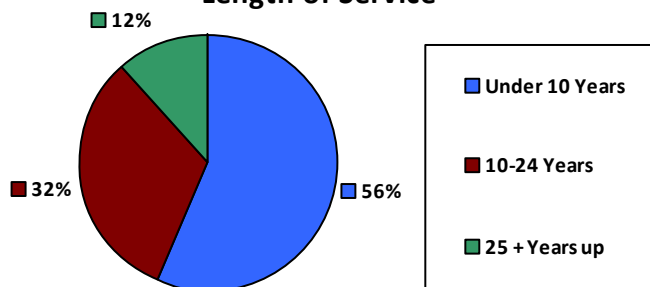
Agriculture: 251



### Race and Ethnicity

White, non-Hispanic	4,866	93.5%
Black/African American, non-Hispanic	82	1.6%
Hispanic or Latino	115	2.2%
Asian, non-Hispanic	60	1.2%
Two or more races	41	0.8%
American Indian and Alaska Native	25	0.5%
Native Hawaiian and Other Pacific Islander	5	0.1%

### Length of Service



### Educational Attainment

HS or Below	1,351	26.0%
Occupational Program	166	3.2%
Between HS and Bachelors	1,230	23.6%
Bachelors + Post Bachelors	1,758	33.8%
Masters and Post Grad	555	10.7%
Doctorate and Post Doc	133	2.6%

### Gender

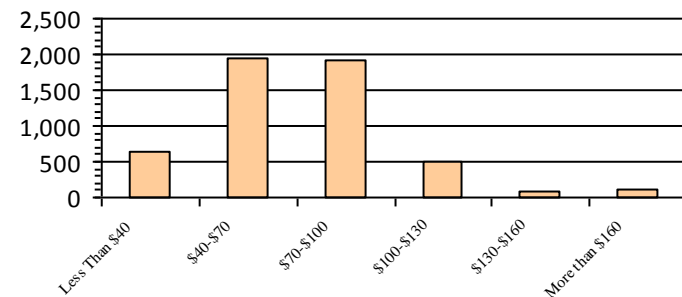
M	2,807	54.0%
F	2,394	46.0%

### Age

<35	1,143	22.0%
35-54	2,682	51.6%
55+	1,376	26.5%

Number of Employees

### Average Salary (in thousands)



### Type of Employment<sup>2</sup>

Administrative	2,800	53.8%
Professional	949	18.2%
Technical	685	13.2%
Clerical	268	5.2%
Other White Collar	156	3.0%
Blue Collar	343	6.6%

All data unless otherwise noted is provided by the US Office of Personnel Management for the December 2015 reporting period. <sup>1</sup>Non-Federal Workers Data calculated from the US Bureau of Labor Statistics 2015 Annual Averages [https://www.bls.gov/news.release/archives/vet\\_03222016.pdf](https://www.bls.gov/news.release/archives/vet_03222016.pdf). <sup>2</sup>Employment categories consistent with the definitions given by the US Office of Personnel Management "Introduction to the Position Classification Standards" 2009. For a description of the employment categories, refer to <http://www.opm.gov/policy-data-oversight/classification-qualifications/classifying-general-schedule-positions/positionclassificationintro.pdf>.

## Who are the Civilian Federal Employees in

# Vermont - 2014

**Federal Workers in Vermont: 5,097**

Percentage Who Are Veterans: 20.99%

**Non-Federal Workers in Vermont: 328,000**<sup>1</sup>

Percentage Who Are Veterans: 6.71%<sup>1</sup>

### Five Largest Federal Employers

DHS: 2,594



VA: 1,113



Army: 317



Air Force: 278



Agriculture: 247



### Race and Ethnicity

White, non-Hispanic	4,763	93.4%
Black/African American, non-Hispanic	89	1.7%
Hispanic or Latino	115	2.3%
Asian, non-Hispanic	57	1.1%
Two or more races	40	0.8%
American Indian and Alaska Native	27	0.5%
Native Hawaiian and Other Pacific Islander	6	0.1%

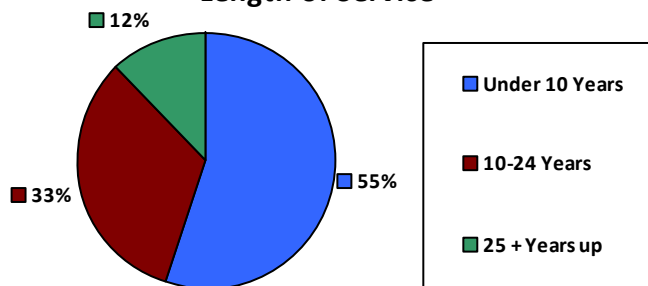
### Gender

M	2,747	53.9%
F	2,350	46.1%

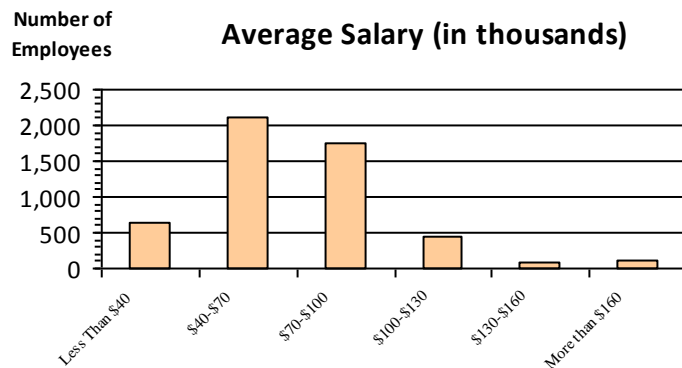
### Age

<35	1,104	21.7%
35-54	2,674	52.5%
55+	1,319	25.9%

### Length of Service



### Average Salary (in thousands)



### Educational Attainment

HS or Below	1,359	26.7%
Occupational Program	171	3.4%
Between HS and Bachelors	1,183	23.2%
Bachelors + Post Bachelors	1,722	33.8%
Masters and Post Grad	540	10.6%
Doctorate and Post Doc	112	2.2%

### Type of Employment<sup>2</sup>

Administrative	2,740	53.8%
Professional	885	17.4%
Technical	697	13.7%
Clerical	246	4.8%
Other White Collar	174	3.4%
Blue Collar	355	7.0%

All data unless otherwise noted is provided by the US Office of Personnel Management for the December 2014 reporting period. <sup>1</sup>Non-Federal Workers Data calculated from the US Bureau of Labor Statistics 2014 Annual Averages [https://www.bls.gov/news.release/archives/vet\\_03182015.pdf](https://www.bls.gov/news.release/archives/vet_03182015.pdf). <sup>2</sup>Employment categories consistent with the definitions given by the US Office of Personnel Management "Introduction to the Position Classification Standards" 2009. For a description of the employment categories, refer to <http://www.opm.gov/policy-data-oversight/classification-qualifications/classifying-general-schedule-positions/positionclassificationintro.pdf>.



## Who are the Civilian Federal Employees in

# Vermont - 2013

**Federal Workers in Vermont: 4,927**

Percentage Who Are Veterans: 20.60%

**Non-Federal Workers in Vermont: 330,000<sup>1</sup>**

Percentage Who Are Veterans: 6.97%<sup>1</sup>

### Five Largest Federal Employers

DHS: 2,529



VA: 1,044



Army: 297



Air Force: 273



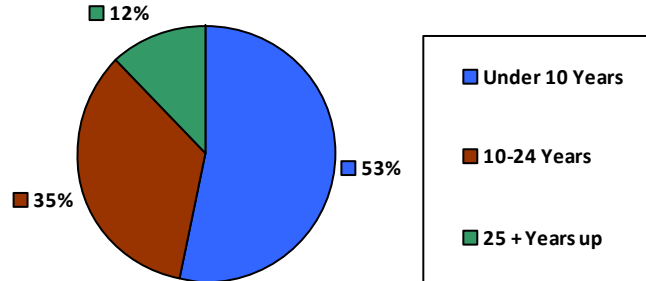
Agriculture: 251



### Race and Ethnicity

White, non-Hispanic	4,623	93.8%
Black/African American, non-Hispanic	69	1.4%
Hispanic or Latino	113	2.3%
Asian, non-Hispanic	51	1.0%
Two or more races	37	0.8%
American Indian and Alaska Native	29	0.6%
Native Hawaiian and Other Pacific Islander	5	0.1%

### Length of Service



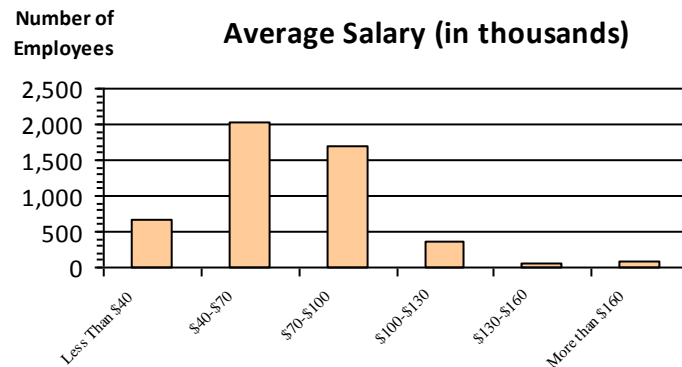
### Educational Attainment

HS or Below	1,376	27.9%
Occupational Program	162	3.3%
Between HS and Bachelors	1,128	22.9%
Bachelors + Post Bachelors	1,647	33.4%
Masters and Post Grad	508	10.3%
Doctorate and Post Doc	96	1.9%

### Gender

Gender	Total		Age		
	Count	Percentage	Age Group	Count	Percentage
M	2,675	54.3%	<35	1,059	21.5%
			35-54	2,612	53.0%
F	2,252	45.7%	55+	1,256	25.5%

### Average Salary (in thousands)



### Type of Employment<sup>2</sup>

Administrative	2,646	53.7%
Professional	850	17.3%
Technical	662	13.4%
Clerical	251	5.1%
Other White Collar	173	3.5%
Blue Collar	345	7.0%

All data unless otherwise noted is provided by the US Office of Personnel Management for the December 2013 reporting period. <sup>1</sup>Non-Federal Workers Data calculated from the US Bureau of Labor Statistics 2013 Annual Averages [https://www.bls.gov/news.release/archives/vet\\_03202014.pdf](https://www.bls.gov/news.release/archives/vet_03202014.pdf). <sup>2</sup>Employment categories consistent with the definitions given by the US Office of Personnel Management "Introduction to the Position Classification Standards" 2009. For a description of the employment categories, refer to <http://www.opm.gov/policy-data-oversight/classification-qualifications/classifying-general-schedule-positions/positionclassificationintro.pdf>.