

Who are the Civilian Federal Employees in

Texas - 2021

Federal Workers in Texas: 157,425

Percentage Who Are Veterans: 36.57%

Non-Federal Workers in Texas: 13,335,000¹

Percentage Who Are Veterans: 6.64%¹

Five Largest Federal Employers

VA: 32,585



DHS: 30,397



Army: 24,242



Air Force: 17,562



Treasury: 10,314



Race and Ethnicity

White, non-Hispanic	71,705	45.5%
Black/African American, non-Hispanic	32,706	20.8%
Hispanic or Latino	40,298	25.6%
Asian, non-Hispanic	7,698	4.9%
Two or more races	2,651	1.7%
American Indian and Alaska Native	1,399	0.9%
Native Hawaiian and Other Pacific Islander	580	0.4%

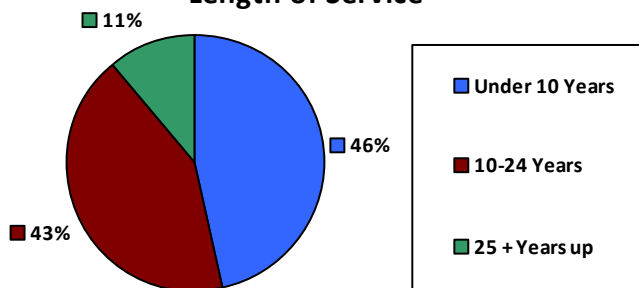
Gender

M	89,853	57.1%
F	67,572	42.9%

Age

<35	23,155	14.7%
35-54	88,649	56.3%
55+	45,621	29.0%

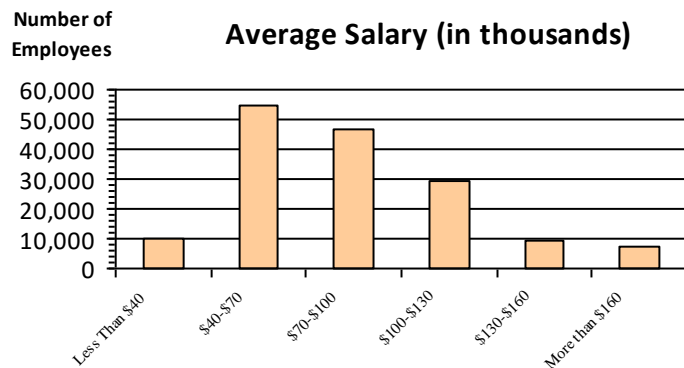
Length of Service



Educational Attainment

HS or Below	50,683	32.2%
Occupational Program	2,949	1.9%
Between HS and Bachelors	31,275	19.9%
Bachelors + Post Bachelors	45,072	28.6%
Masters and Post Grad	23,354	14.8%
Doctorate and Post Doc	3,916	2.5%

Average Salary (in thousands)



Type of Employment²

Administrative	35,071	22.3%
Professional	28,453	18.1%
Technical	8,971	5.7%
Clerical	13,597	8.6%
Other White Collar	11,963	7.6%
Blue Collar	12,662	8.0%

All data unless otherwise noted is provided by the US Office of Personnel Management for the December 2015 reporting period. ¹Non-Federal Workers Data calculated from the US Bureau of Labor Statistics 2015 Annual Averages https://www.bls.gov/news.release/archives/vet_03222016.pdf. ²Employment categories consistent with the definitions given by the US Office of Personnel Management "Introduction to the Position Classification Standards" 2009. For a description of the employment categories, refer to <http://www.opm.gov/policy-data-oversight/classification-qualifications/classifying-general-schedule-positions/positionclassificationintro.pdf>.

Who are the Civilian Federal Employees in

Texas - 2020

Federal Workers in Texas: 157,232

Percentage Who Are Veterans: 36.99%

Non-Federal Workers in Texas: 12,833,000¹

Percentage Who Are Veterans: 6.45%¹

Five Largest Federal Employers

VA: 32,084



DHS: 29,785



Army: 25,274



Air Force: 17,513



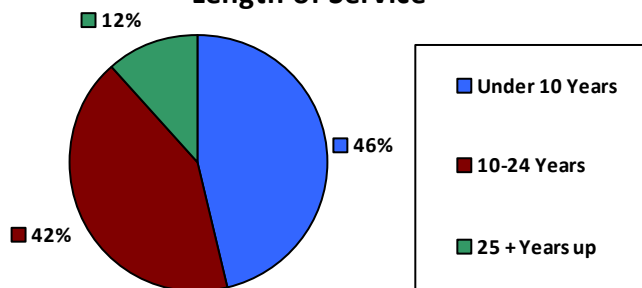
Treasury: 10,587



Race and Ethnicity

White, non-Hispanic	72,180	45.9%
Black/African American, non-Hispanic	32,525	20.7%
Hispanic or Latino	40,375	25.7%
Asian, non-Hispanic	7,364	4.7%
Two or more races	2,540	1.6%
American Indian and Alaska Native	1,350	0.9%
Native Hawaiian and Other Pacific Islander	585	0.4%

Length of Service



Educational Attainment

HS or Below	50,806	32.3%
Occupational Program	2,959	1.9%
Between HS and Bachelors	31,979	20.3%
Bachelors + Post Bachelors	44,746	28.5%
Masters and Post Grad	22,697	14.4%
Doctorate and Post Doc	3,819	2.4%

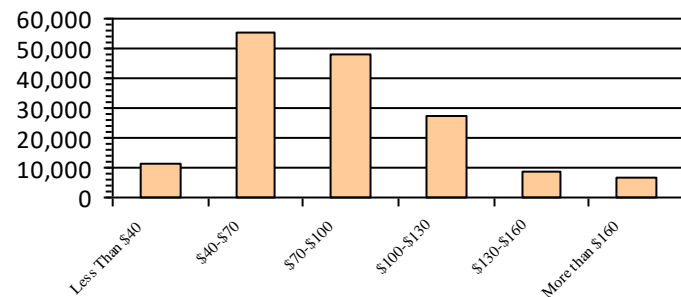
Gender

M	90,326	57.4%
F	66,906	42.5%

Age

<35	23,630	15.0%
35-54	87,826	55.9%
55+	45,776	29.1%

Average Salary (in thousands)



Type of Employment²

Administrative	58,854	37.4%
Professional	34,313	21.8%
Technical	28,669	18.2%
Clerical	9,331	5.9%
Other White Collar	13,254	8.4%
Blue Collar	12,662	8.1%

All data unless otherwise noted is provided by the US Office of Personnel Management for the December 2015 reporting period. ¹Non-Federal Workers Data calculated from the US Bureau of Labor Statistics 2015 Annual Averages https://www.bls.gov/news.release/archives/vet_03222016.pdf. ²Employment categories consistent with the definitions given by the US Office of Personnel Management "Introduction to the Position Classification Standards" 2009. For a description of the employment categories, refer to <http://www.opm.gov/policy-data-oversight/classification-qualifications/classifying-general-schedule-positions/positionclassificationintro.pdf>.

Who are the Civilian Federal Employees in

Texas - 2019

Federal Workers in Texas: 150,868

Percentage Who Are Veterans: 37.75%

Non-Federal Workers in Texas: 13,484,000¹

Percentage Who Are Veterans: 6.33%¹

Five Largest Federal Employers

VA: 30,441



DHS: 29,404



Army: 25,042



Air Force: 16,883



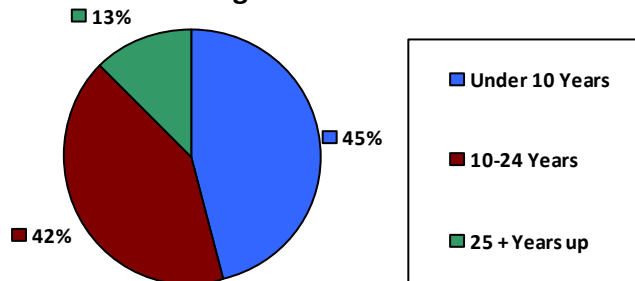
Treasury: 9,106



Race and Ethnicity

White, non-Hispanic	70,186	46.5%
Black/African American, non-Hispanic	30,776	20.4%
Hispanic or Latino	38,783	25.7%
Asian, non-Hispanic	6,711	4.4%
Two or more races	2,318	1.5%
American Indian and Alaska Native	1,295	0.9%
Native Hawaiian and Other Pacific Islander	541	0.4%

Length of Service



Educational Attainment

HS or Below	45,687	30.3%
Occupational Program	4,037	2.7%
Between HS and Bachelors	32,859	21.8%
Bachelors + Post Bachelors	42,944	28.5%
Masters and Post Grad	21,287	14.1%
Doctorate and Post Doc	3,813	2.5%

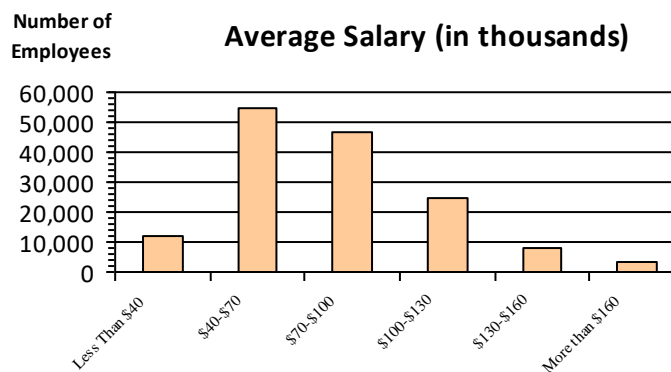
Gender

M	87,633	58.1%
F	63,232	41.9%

Age

<35	22,208	14.7%
35-54	84,842	56.2%
55+	43,818	29.0%

Average Salary (in thousands)



Type of Employment²

Administrative	55,812	37.0%
Professional	32,749	21.7%
Technical	27,445	18.2%
Clerical	8,873	5.9%
Other White Collar	13,261	8.8%
Blue Collar	12,560	8.3%

All data unless otherwise noted is provided by the US Office of Personnel Management for the December 2015 reporting period. ¹Non-Federal Workers Data calculated from the US Bureau of Labor Statistics 2015 Annual Averages https://www.bls.gov/news.release/archives/vet_03222016.pdf. ²Employment categories consistent with the definitions given by the US Office of Personnel Management "Introduction to the Position Classification Standards" 2009. For a description of the employment categories, refer to <http://www.opm.gov/policy-data-oversight/classification-qualifications/classifying-general-schedule-positions/positionclassificationintro.pdf>.

Who are the Civilian Federal Employees in

Texas - 2018

Federal Workers in Texas: 147,758

Percentage Who Are Veterans: 37.69%

Non-Federal Workers in Texas: 13,213,000¹

Percentage Who Are Veterans: 6.32%¹

Five Largest Federal Employers

VA: 29,100



DHS: 28,343



Army: 24,944



Air Force: 16,463



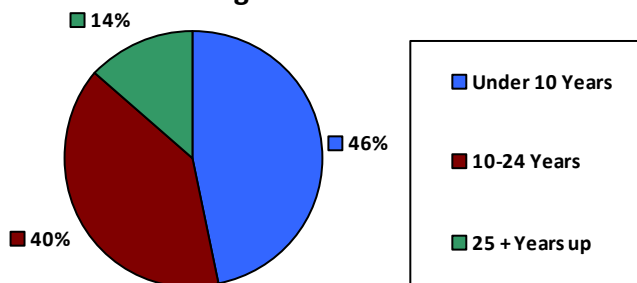
Treasury: 9,139



Race and Ethnicity

White, non-Hispanic	69,181	46.8%
Black/African American, non-Hispanic	30,247	20.5%
Hispanic or Latino	37,865	25.6%
Asian, non-Hispanic	6,258	4.2%
Two or more races	2,175	1.5%
American Indian and Alaska Native	1,299	0.9%
Native Hawaiian and Other Pacific Islander	507	0.3%

Length of Service



Educational Attainment

HS or Below	43,796	29.6%
Occupational Program	4,133	2.8%
Between HS and Bachelors	33,369	22.6%
Bachelors + Post Bachelors	42,318	28.6%
Masters and Post Grad	20,356	13.8%
Doctorate and Post Doc	3,565	2.4%

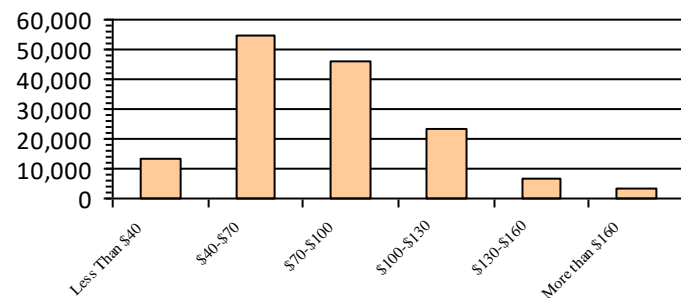
Gender

M	85,774	58.1%
F	61,919	41.9%

Age

<35	21,587	14.6%
35-54	83,512	56.5%
55+	42,659	28.9%

Average Salary (in thousands)



Type of Employment²

Administrative	54,460	36.9%
Professional	31,932	21.6%
Technical	28,068	19.0%
Clerical	8,630	5.8%
Other White Collar	12,250	8.3%
Blue Collar	12,291	8.3%

All data unless otherwise noted is provided by the US Office of Personnel Management for the December 2018 reporting period. ¹Non-Federal Workers Data calculated from the US Bureau of Labor Statistics 2018 Annual Averages www.bls.gov/news.release/pdf/vet.pdf. ²Employment categories consistent with the definitions given by the US Office of Personnel Management "Introduction to the Position Classification Standards" 2009. For a description of the employment categories, refer to www.opm.gov/policy-data-oversight/classification-qualifications/classifying-general-schedule-positions/positionclassificationintro.pdf.

Who are the Civilian Federal Employees in

Texas - 2017

Federal Workers in Texas: 147,401

Percentage Who Are Veterans: 37.48%

Non-Federal Workers in Texas: 12,752,000¹

Percentage Who Are Veterans: 7.32%²

Five Largest Federal Employers

VA: 28,147



DHS: 27,990



Army: 25,189



Air Force: 16,070



Justice: 9,005



Race and Ethnicity

White, non-Hispanic	70,248	47.7%
Black/African American, non-Hispanic	30,074	20.4%
Hispanic or Latino	37,288	25.3%
Asian, non-Hispanic	5,923	4.0%
Two or more races	2,076	1.4%
American Indian and Alaska Native	1,288	0.9%
Native Hawaiian and Other Pacific Islander	463	0.3%

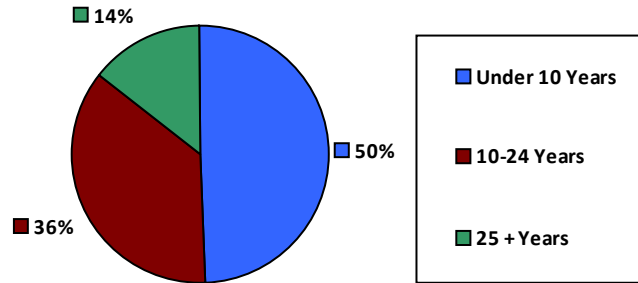
Gender

M	85,831	58.2%
F	61,533	41.8%

Age

<35	22,158	15.0%
35-54	83,357	56.5%
55+	41,886	28.4%

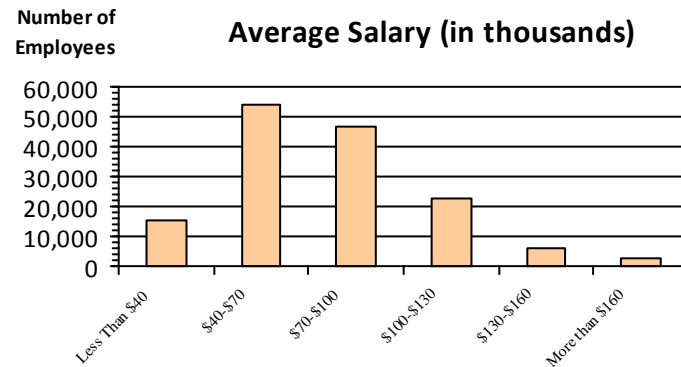
Length of Service



Educational Attainment

HS or Below	44,077	29.9%
Occupational Program	4,203	2.9%
Between HS and Bachelors	33,835	23.0%
Bachelors + Post Bachelors	41,863	28.4%
Masters and Post Grad	19,779	13.4%
Doctorate and Post Doc	3,381	2.3%

Average Salary (in thousands)



Type of Employment²

Administrative	54,695	37.1%
Professional	31,520	21.4%
Technical	27,839	18.9%
Clerical	8,623	5.8%
Other White Collar	12,038	8.2%
Blue Collar	12,667	8.6%

All data unless otherwise noted is provided by the US Office of Personnel Management for the December 2017 reporting period. Non-Federal Workers Data calculated from the US Bureau of Labor Statistics 2017 Annual Averages <https://www.bls.gov/news.release/vet.htm>.¹ Employment categories consistent with the definitions given by the US Office of Personnel Management "Introduction to the Position Classification Standards" (Revised: 2009), available at <https://www.opm.gov/policy-data-oversight/classification-qualifications/classifying-general-schedule-positions/positionclassificationintro.pdf>.²

Who are the Civilian Federal Employees in

Texas - 2016

Federal Workers in Texas: 145,545

Percentage Who Are Veterans: 37.86%

Non-Federal Workers in Texas: 12,617,000¹

Percentage Who Are Veterans: 7.36%¹

Five Largest Federal Employers

VA: 27,239



DHS: 26,424



Army: 25,784



Air Force: 16,318



Justice: 9,346



Race and Ethnicity

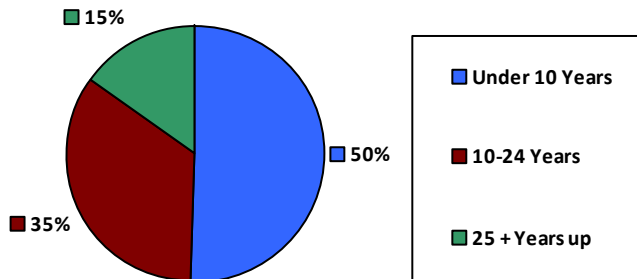
White, non-Hispanic	71,107	48.9%
Black/African American, non-Hispanic	28,340	19.5%
Hispanic or Latino	36,764	25.3%
Asian, non-Hispanic	5,689	3.9%
Two or more races	1,861	1.3%
American Indian and Alaska Native	1,318	0.9%
Native Hawaiian and Other Pacific Islander	427	0.3%

Gender

Age

M	85,690	58.9%	<35	22,952	15.8%
			35-54	82,452	56.6%
F	59,834	41.1%	55+	40,141	27.6%

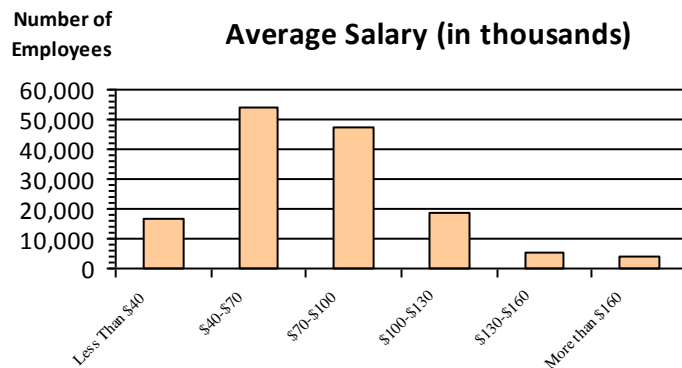
Length of Service



Educational Attainment

HS or Below	42,056	28.9%
Occupational Program	4,337	3.0%
Between HS and Bachelors	34,477	23.7%
Bachelors + Post Bachelors	41,967	28.8%
Masters and Post Grad	19,305	13.3%
Doctorate and Post Doc	3,159	2.2%

Average Salary (in thousands)



Type of Employment²

Administrative	52,673	36.2%
Professional	31,163	21.4%
Technical	28,053	19.3%
Clerical	8,337	5.7%
Other White Collar	12,293	8.4%
Blue Collar	13,022	8.9%

All data unless otherwise noted is provided by the US Office of Personnel Management for the December 2016 reporting period. ¹Non-Federal Workers Data calculated from the US Bureau of Labor Statistics 2015 Annual Averages https://www.bls.gov/news.release/archives/vet_03222016.pdf. ²Employment categories consistent with the definitions given by the US Office of Personnel Management "Introduction to the Position Classification Standards" 2009. For a description of the employment categories, refer to <http://www.opm.gov/policy-data-oversight/classification-qualifications/classifying-general-schedule-positions/positionclassificationintro.pdf>.

Who are the Civilian Federal Employees in

Texas - 2015

Federal Workers in Texas: 143,360

Percentage Who Are Veterans: 37.68%

Non-Federal Workers in Texas: 12,330,000¹

Percentage Who Are Veterans: 7.51%¹

Five Largest Federal Employers

VA: 26,114



Army: 26,064



DHS: 25,996



Air Force: 15,901



Justice: 9,239



Race and Ethnicity

White, non-Hispanic	71,321	49.7%
Black/African American, non-Hispanic	27,191	19.0%
Hispanic or Latino	36,050	25.1%
Asian, non-Hispanic	5,308	3.7%
Two or more races	1,687	1.2%
American Indian and Alaska Native	1,357	0.9%
Native Hawaiian and Other Pacific Islander	397	0.3%

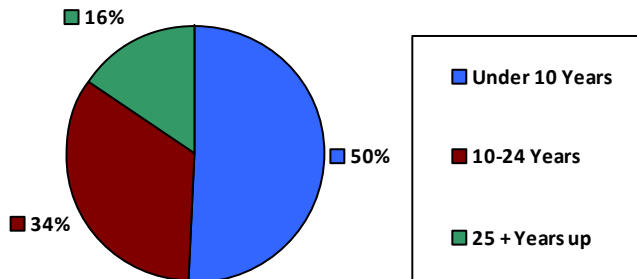
Gender

M	84,830	59.2%
F	58,524	40.8%

Age

<35	23,229	16.2%
35-54	81,234	56.7%
55+	38,897	27.1%

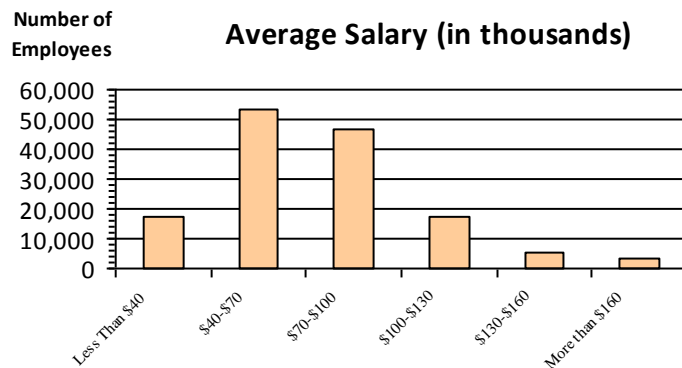
Length of Service



Educational Attainment

HS or Below	41,333	28.8%
Occupational Program	4,451	3.1%
Between HS and Bachelors	34,637	24.2%
Bachelors + Post Bachelors	41,341	28.8%
Masters and Post Grad	18,414	12.8%
Doctorate and Post Doc	2,955	2.1%

Average Salary (in thousands)



Type of Employment²

Administrative	51,506	35.9%
Professional	30,174	21.0%
Technical	27,712	19.3%
Clerical	8,184	5.7%
Other White Collar	12,362	8.6%
Blue Collar	13,418	9.4%

All data unless otherwise noted is provided by the US Office of Personnel Management for the December 2015 reporting period. ¹Non-Federal Workers Data calculated from the US Bureau of Labor Statistics 2015 Annual Averages https://www.bls.gov/news.release/archives/vet_03222016.pdf. ²Employment categories consistent with the definitions given by the US Office of Personnel Management "Introduction to the Position Classification Standards" 2009. For a description of the employment categories, refer to <http://www.opm.gov/policy-data-oversight/classification-qualifications/classifying-general-schedule-positions/positionclassificationintro.pdf>.

Who are the Civilian Federal Employees in

Texas - 2014

Federal Workers in Texas: 141,578

Percentage Who Are Veterans: 37.21%

Non-Federal Workers in Texas: 12,268,000¹

Percentage Who Are Veterans: 7.25%¹

Five Largest Federal Employers

Army: 25,961



DHS: 25,894



VA: 24,962



Air Force: 15,511



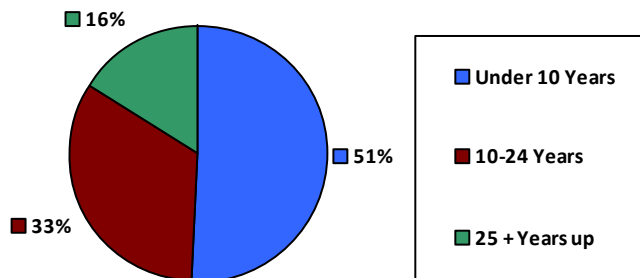
Justice: 9,260



Race and Ethnicity

White, non-Hispanic	71,474	50.5%
Black/African American, non-Hispanic	26,239	18.5%
Hispanic or Latino	35,595	25.1%
Asian, non-Hispanic	5,006	3.5%
Two or more races	1,550	1.1%
American Indian and Alaska Native	1,357	1.0%
Native Hawaiian and Other Pacific Islander	342	0.2%

Length of Service



Educational Attainment

HS or Below	41,392	29.2%
Occupational Program	4,503	3.2%
Between HS and Bachelors	34,728	24.5%
Bachelors + Post Bachelors	40,640	28.7%
Masters and Post Grad	17,424	12.3%
Doctorate and Post Doc	2,684	1.9%

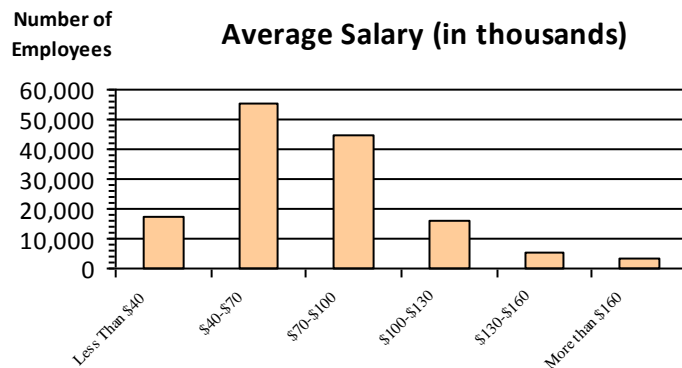
Gender

M	84,100	59.4%
F	57,477	40.6%

Age

<35	23,729	16.8%
35-54	79,933	56.5%
55+	37,916	26.8%

Average Salary (in thousands)



Type of Employment²

Administrative	51,138	36.1%
Professional	29,340	20.7%
Technical	27,408	19.4%
Clerical	7,905	5.6%
Other White Collar	12,264	8.7%
Blue Collar	13,516	9.5%

All data unless otherwise noted is provided by the US Office of Personnel Management for the December 2014 reporting period. ¹Non-Federal Workers Data calculated from the US Bureau of Labor Statistics 2014 Annual Averages https://www.bls.gov/news.release/archives/vet_03182015.pdf. ²Employment categories consistent with the definitions given by the US Office of Personnel Management "Introduction to the Position Classification Standards" 2009. For a description of the employment categories, refer to <http://www.opm.gov/policy-data-oversight/classification-qualifications/classifying-general-schedule-positions/positionclassificationintro.pdf>.

Who are the Civilian Federal Employees in

Texas - 2013

Federal Workers in Texas: 142,313

Percentage Who Are Veterans: 37.03%

Non-Federal Workers in Texas: 11,940,000¹

Percentage Who Are Veterans: 7.51%¹

Five Largest Federal Employers

Army: 26,334



DHS: 26,162



VA: 24,284



Air Force: 15,965



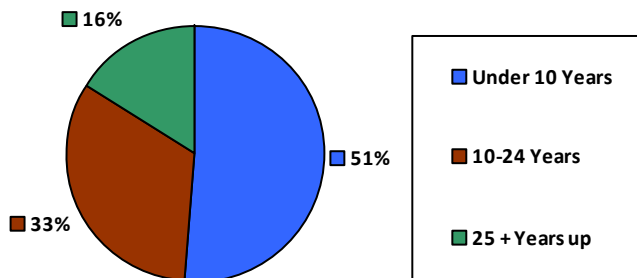
Justice: 9,260



Race and Ethnicity

White, non-Hispanic	72,441	50.9%
Black/African American, non-Hispanic	25,920	18.2%
Hispanic or Latino	35,981	25.3%
Asian, non-Hispanic	4,839	3.4%
Two or more races	1,378	1.0%
American Indian and Alaska Native	1,405	1.0%
Native Hawaiian and Other Pacific Islander	330	0.2%

Length of Service



Educational Attainment

HS or Below	41,941	29.5%
Occupational Program	4,438	3.1%
Between HS and Bachelors	35,726	25.1%
Bachelors + Post Bachelors	40,679	28.6%
Masters and Post Grad	16,832	11.8%
Doctorate and Post Doc	2,633	1.8%

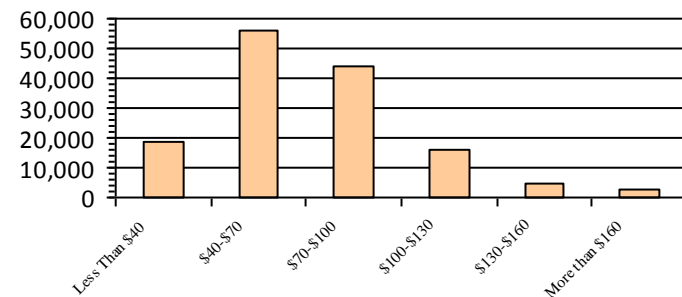
Gender

M	84,604	59.4%
F	57,709	40.5%

Age

<35	24,700	17.4%
35-54	79,797	56.1%
55+	37,816	26.6%

Average Salary (in thousands)



Type of Employment²

Administrative	51,455	36.2%
Professional	29,123	20.5%
Technical	26,363	18.5%
Clerical	9,510	6.7%
Other White Collar	12,409	8.7%
Blue Collar	13,431	9.4%

All data unless otherwise noted is provided by the US Office of Personnel Management for the December 2013 reporting period. ¹Non-Federal Workers Data calculated from the US Bureau of Labor Statistics 2013 Annual Averages https://www.bls.gov/news.release/archives/vet_03202014.pdf. ²Employment categories consistent with the definitions given by the US Office of Personnel Management "Introduction to the Position Classification Standards" 2009. For a description of the employment categories, refer to <http://www.opm.gov/policy-data-oversight/classification-qualifications/classifying-general-schedule-positions/positionclassificationintro.pdf>.