

Who are the Civilian Federal Employees in South Dakota - 2021

Federal Workers in South Dakota: 8,762

Percentage Who Are Veterans: 22.78%

Non-Federal Workers in South Dakota: 453,000¹

Percentage Who Are Veterans: 7.28%¹

Five Largest Federal Employers

VA: 2,717



HHS: 1,562



DOI: 1,186



Agriculture: 919



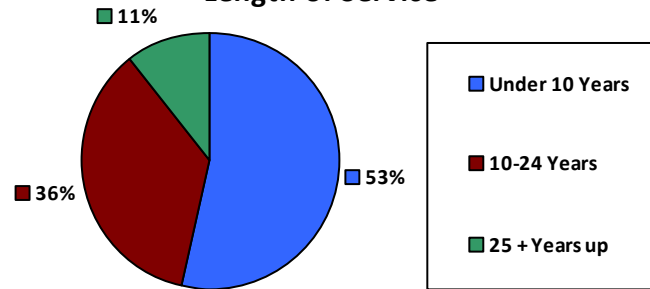
Air Force: 731



Race and Ethnicity

White, non-Hispanic	6,338	72.3%
Black/African American, non-Hispanic	123	1.4%
Hispanic or Latino	133	1.5%
Asian, non-Hispanic	100	1.1%
Two or more races	148	1.7%
American Indian and Alaska Native	1,863	21.3%
Native Hawaiian and Other Pacific Islander	15	0.2%

Length of Service



Educational Attainment

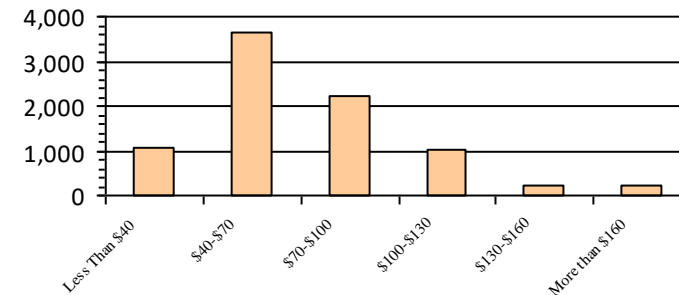
HS or Below	2,536	28.9%
Occupational Program	269	3.1%
Between HS and Bachelors	1,934	22.1%
Bachelors + Post Bachelors	2,750	31.4%
Masters and Post Grad	971	11.1%
Doctorate and Post Doc	257	2.9%

Gender

Age

Gender	Count	Percentage	Age Group	Count	Percentage
M	4,272	48.8%	<35	1,672	19.1%
			35-54	4,641	53.0%
F	4,490	51.2%	55+	2,449	27.9%

Average Salary (in thousands)



Type of Employment²

Administrative	2,708	30.9%
Professional	1,955	22.3%
Technical	682	7.8%
Clerical	226	2.6%
Other White Collar	1,017	11.6%
Blue Collar	929	10.6%

All data unless otherwise noted is provided by the US Office of Personnel Management for the December 2015 reporting period. ¹Non-Federal Workers Data calculated from the US Bureau of Labor Statistics 2015 Annual Averages https://www.bls.gov/news.release/archives/vet_03222016.pdf. ²Employment categories consistent with the definitions given by the US Office of Personnel Management "Introduction to the Position Classification Standards" 2009. For a description of the employment categories, refer to <http://www.opm.gov/policy-data-oversight/classification-qualifications/classifying-general-schedule-positions/positionclassificationintro.pdf>.

Who are the Civilian Federal Employees in South Dakota - 2020

Federal Workers in South Dakota: 8,728

Percentage Who Are Veterans: 23.34%

Non-Federal Workers in South Dakota: 437,000¹

Percentage Who Are Veterans: 6.86%¹

Five Largest Federal Employers

VA: 2,731



HHS: 1,471



DOI: 1,221



Agriculture: 926



Air Force: 728



Race and Ethnicity

White, non-Hispanic	6,376	73.0%
Black/African American, non-Hispanic	123	1.4%
Hispanic or Latino	146	1.7%
Asian, non-Hispanic	99	1.1%
Two or more races	138	1.6%
American Indian and Alaska Native	1,787	20.5%
Native Hawaiian and Other Pacific Islander	14	0.2%

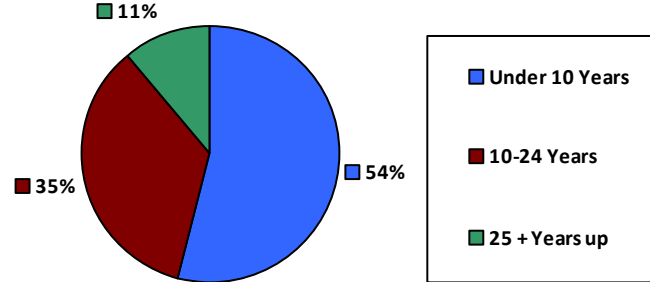
Gender

M	4,207	48.2%
F	4,521	51.8%

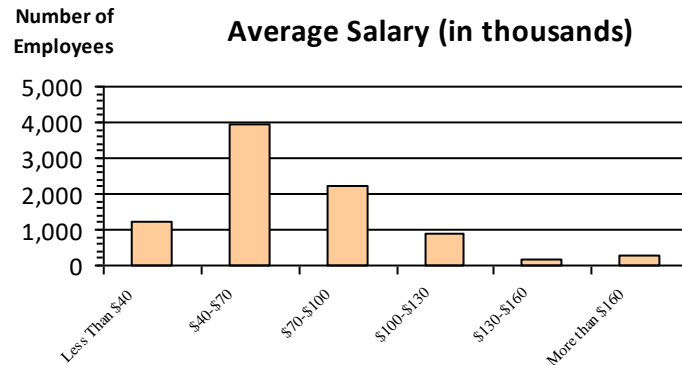
Age

<35	1,725	19.8%
35-54	4,539	52.0%
55+	2,464	28.2%

Length of Service



Average Salary (in thousands)



Educational Attainment

HS or Below	2,481	28.4%
Occupational Program	278	3.2%
Between HS and Bachelors	1,942	22.2%
Bachelors + Post Bachelors	2,741	31.4%
Masters and Post Grad	962	11.0%
Doctorate and Post Doc	259	3.0%

Type of Employment²

Administrative	2,090	23.9%
Professional	2,693	30.9%
Technical	2,030	23.3%
Clerical	715	8.2%
Other White Collar	259	3.0%
Blue Collar	929	10.6%

All data unless otherwise noted is provided by the US Office of Personnel Management for the December 2015 reporting period. ¹Non-Federal Workers Data calculated from the US Bureau of Labor Statistics 2015 Annual Averages https://www.bls.gov/news.release/archives/vet_03222016.pdf. ²Employment categories consistent with the definitions given by the US Office of Personnel Management "Introduction to the Position Classification Standards" 2009. For a description of the employment categories, refer to <http://www.opm.gov/policy-data-oversight/classification-qualifications/classifying-general-schedule-positions/positionclassificationintro.pdf>.

Who are the Civilian Federal Employees in South Dakota - 2019

Federal Workers in South Dakota: 8,645

Percentage Who Are Veterans: 23.61%

Non-Federal Workers in South Dakota: 447,000¹

Percentage Who Are Veterans: 7.61%¹

Five Largest Federal Employers

VA: 2,655



HHS: 1,523



DOI: 1,225



Agriculture: 881



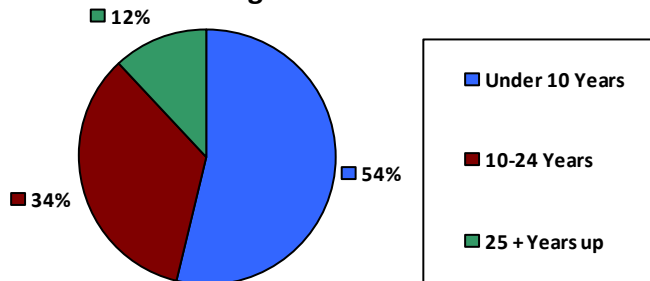
Air Force: 766



Race and Ethnicity

White, non-Hispanic	6,235	72.1%
Black/African American, non-Hispanic	108	1.2%
Hispanic or Latino	149	1.7%
Asian, non-Hispanic	85	1.0%
Two or more races	132	1.5%
American Indian and Alaska Native	1,905	22.0%
Native Hawaiian and Other Pacific Islander	15	0.2%

Length of Service



Educational Attainment

HS or Below	2,267	26.2%
Occupational Program	449	5.2%
Between HS and Bachelors	2,060	23.8%
Bachelors + Post Bachelors	2,640	30.5%
Masters and Post Grad	907	10.5%
Doctorate and Post Doc	275	3.2%

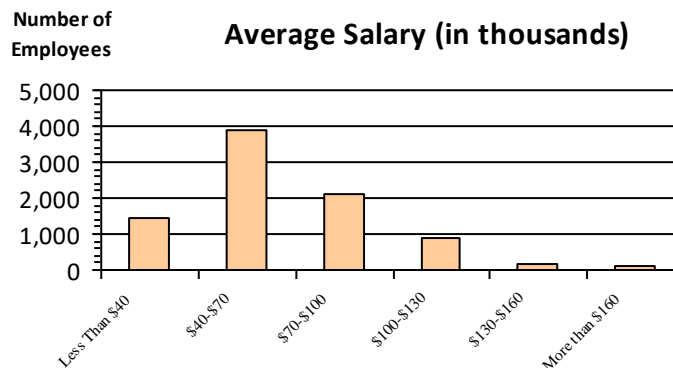
Gender

M	4,283	49.5%
F	4,362	50.5%

Age

<35	1,691	19.6%
35-54	4,504	52.1%
55+	2,450	28.3%

Average Salary (in thousands)



Type of Employment²

Administrative	1,993	23.1%
Professional	2,598	30.0%
Technical	2,016	23.3%
Clerical	695	8.0%
Other White Collar	241	2.8%
Blue Collar	1,092	12.6%

All data unless otherwise noted is provided by the US Office of Personnel Management for the December 2015 reporting period. ¹Non-Federal Workers Data calculated from the US Bureau of Labor Statistics 2015 Annual Averages https://www.bls.gov/news.release/archives/vet_03222016.pdf. ²Employment categories consistent with the definitions given by the US Office of Personnel Management "Introduction to the Position Classification Standards" 2009. For a description of the employment categories, refer to <http://www.opm.gov/policy-data-oversight/classification-qualifications/classifying-general-schedule-positions/positionclassificationintro.pdf>.

Who are the Civilian Federal Employees in South Dakota - 2018

Federal Workers in South Dakota: 8,820

Percentage Who Are Veterans: 23.33%

Non-Federal Workers in South Dakota: 438,000¹

Percentage Who Are Veterans: 8.90%¹

Five Largest Federal Employers

VA: 2,649



HHS: 1,585



DOI: 1,280



Agriculture: 903



Air Force: 806



Race and Ethnicity

White, non-Hispanic	6,336	71.8%
Black/African American, non-Hispanic	115	1.3%
Hispanic or Latino	146	1.7%
Asian, non-Hispanic	83	0.9%
Two or more races	125	1.4%
American Indian and Alaska Native	1,992	22.6%
Native Hawaiian and Other Pacific Islander	13	0.1%

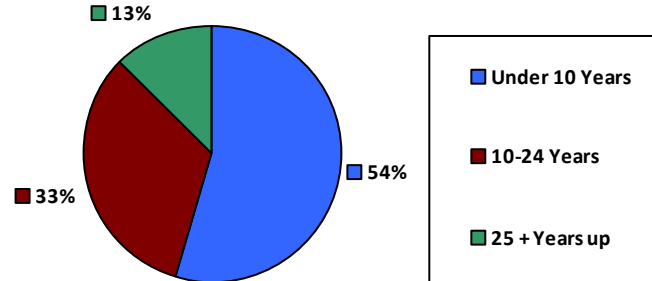
Gender

M	4,404	49.9%
F	4,415	50.1%

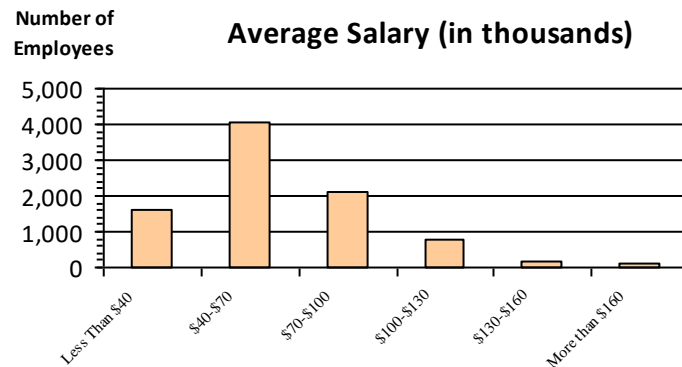
Age

<35	1,766	20.0%
35-54	4,542	51.5%
55+	2,512	28.5%

Length of Service



Average Salary (in thousands)



Educational Attainment

HS or Below	2,266	25.7%
Occupational Program	498	5.6%
Between HS and Bachelors	2,168	24.6%
Bachelors + Post Bachelors	2,692	30.5%
Masters and Post Grad	881	10.0%
Doctorate and Post Doc	268	3.0%

Type of Employment²

Administrative	1,986	22.5%
Professional	2,601	29.5%
Technical	2,128	24.1%
Clerical	720	8.2%
Other White Collar	239	2.7%
Blue Collar	1,135	12.9%

All data unless otherwise noted is provided by the US Office of Personnel Management for the December 2018 reporting period. ¹Non-Federal Workers Data calculated from the US Bureau of Labor Statistics 2018 Annual Averages www.bls.gov/news.release/pdf/vet.pdf. ²Employment categories consistent with the definitions given by the US Office of Personnel Management "Introduction to the Position Classification Standards" 2009. For a description of the employment categories, refer to www.opm.gov/policy-data-oversight/classification-qualifications/classifying-general-schedule-positions/positionclassificationintro.pdf.

Who are the Civilian Federal Employees in South Dakota - 2017

Federal Workers in South Dakota: 8,768

Percentage Who Are Veterans: 23.37%

Non-Federal Workers in South Dakota: 437,000¹

Percentage Who Are Veterans: 11.48%²

Five Largest Federal Employers

VA: 2,581



HHS: 1,564



DOI: 1,380



Agriculture: 921



Air Force: 761



Race and Ethnicity

White, non-Hispanic	6,264	71.4%
Black/African American, non-Hispanic	113	1.3%
Hispanic or Latino	154	1.8%
Asian, non-Hispanic	82	0.9%
Two or more races	109	1.2%
American Indian and Alaska Native	2,025	23.1%
Native Hawaiian and Other Pacific Islander	11	0.1%

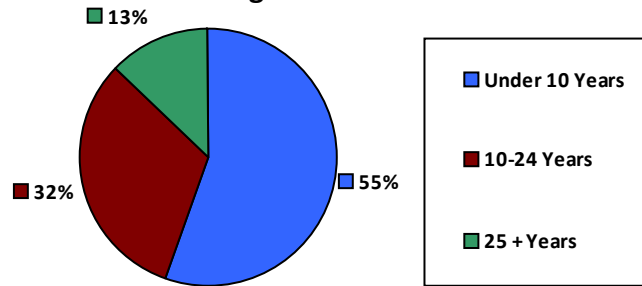
Gender

M	4,375	49.9%
F	4,391	50.1%

Age

<35	1,758	20.0%
35-54	4,512	51.5%
55+	2,498	28.5%

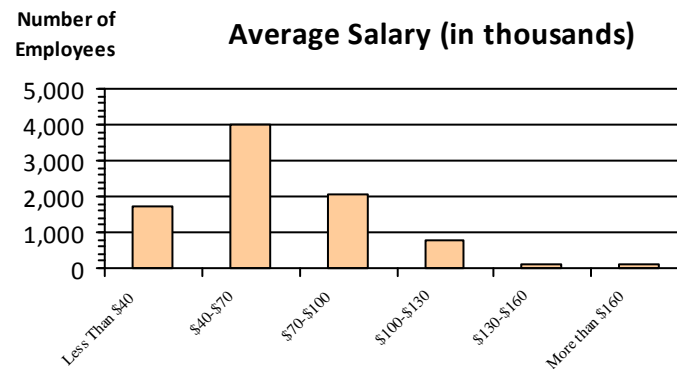
Length of Service



Educational Attainment

HS or Below	2,199	25.1%
Occupational Program	536	6.1%
Between HS and Bachelors	2,188	25.0%
Bachelors + Post Bachelors	2,650	30.2%
Masters and Post Grad	876	10.0%
Doctorate and Post Doc	278	3.2%

Average Salary (in thousands)



Type of Employment²

Administrative	1,940	22.1%
Professional	2,620	29.9%
Technical	2,151	24.5%
Clerical	705	8.0%
Other White Collar	235	2.7%
Blue Collar	1,115	12.7%

All data unless otherwise noted is provided by the US Office of Personnel Management for the December 2017 reporting period. Non-Federal Workers Data calculated from the US Bureau of Labor Statistics 2017 Annual Averages <https://www.bls.gov/news.release/vet.htm>.¹ Employment categories consistent with the definitions given by the US Office of Personnel Management "Introduction to the Position Classification Standards" (Revised: 2009), available at <https://www.opm.gov/policy-data-oversight/classification-qualifications/classifying-general-schedule-positions/positionclassificationintro.pdf>.²

Who are the Civilian Federal Employees in South Dakota - 2016

Federal Workers in South Dakota: 8,758

Percentage Who Are Veterans: 23.22%

Non-Federal Workers in South Dakota: 433,000¹

*Percentage Who Are Veterans: 10.16%*¹

Five Largest Federal Employers

VA: 2,463



HHS: 1,582



DOI: 1,362



Agriculture: 939



Air Force: 828



Race and Ethnicity

White, non-Hispanic	6,292	71.8%
Black/African American, non-Hispanic	108	1.2%
Hispanic or Latino	137	1.6%
Asian, non-Hispanic	74	0.8%
Two or more races	88	1.0%
American Indian and Alaska Native	2,039	23.3%
Native Hawaiian and Other Pacific Islander	13	0.1%

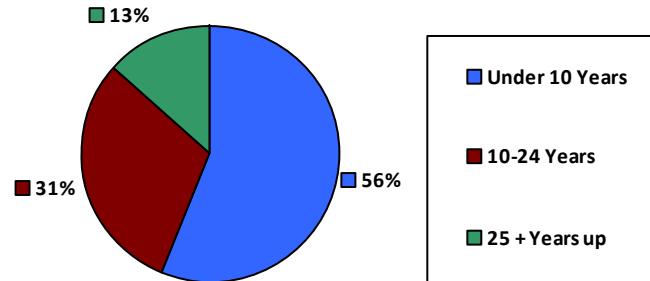
Gender

M	4,410	50.4%
F	4,347	49.6%

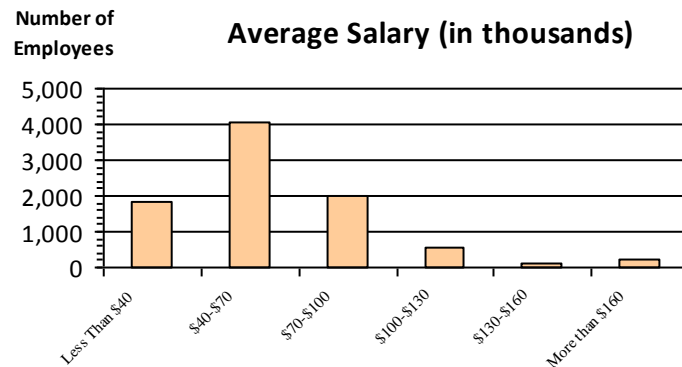
Age

<35	1,825	20.8%
35-54	4,489	51.3%
55+	2,444	27.9%

Length of Service



Average Salary (in thousands)



Educational Attainment

HS or Below	2,185	24.9%
Occupational Program	583	6.7%
Between HS and Bachelors	2,188	25.0%
Bachelors + Post Bachelors	2,651	30.3%
Masters and Post Grad	852	9.7%
Doctorate and Post Doc	260	3.0%

Type of Employment²

Administrative	1,933	22.1%
Professional	2,621	29.9%
Technical	2,119	24.2%
Clerical	685	7.8%
Other White Collar	248	2.8%
Blue Collar	1,151	13.1%

All data unless otherwise noted is provided by the US Office of Personnel Management for the December 2016 reporting period. ¹Non-Federal Workers Data calculated from the US Bureau of Labor Statistics 2015 Annual Averages https://www.bls.gov/news.release/archives/vet_03222016.pdf. ²Employment categories consistent with the definitions given by the US Office of Personnel Management "Introduction to the Position Classification Standards" 2009. For a description of the employment categories, refer to <http://www.opm.gov/policy-data-oversight/classification-qualifications/classifying-general-schedule-positions/positionclassificationintro.pdf>.

Who are the Civilian Federal Employees in South Dakota - 2015

Federal Workers in South Dakota: 8,640

Percentage Who Are Veterans: 23.09%

Non-Federal Workers in South Dakota: 433,000¹

Percentage Who Are Veterans: 8.78%¹

Five Largest Federal Employers

VA: 2,390



HHS: 1,515



DOI: 1,364



Agriculture: 944



Air Force: 814



Race and Ethnicity

White, non-Hispanic	6,221	72.0%
Black/African American, non-Hispanic	93	1.1%
Hispanic or Latino	142	1.6%
Asian, non-Hispanic	73	0.8%
Two or more races	86	1.0%
American Indian and Alaska Native	2,014	23.3%
Native Hawaiian and Other Pacific Islander	11	0.1%

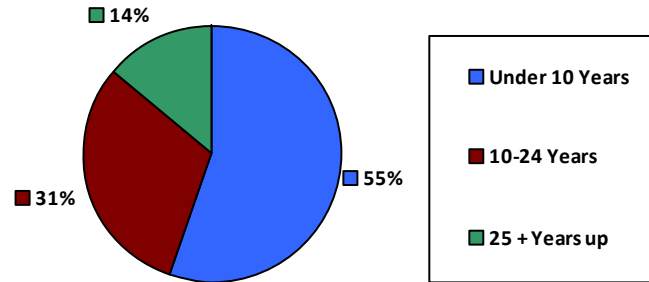
Gender

M	4,334	50.2%
F	4,306	49.8%

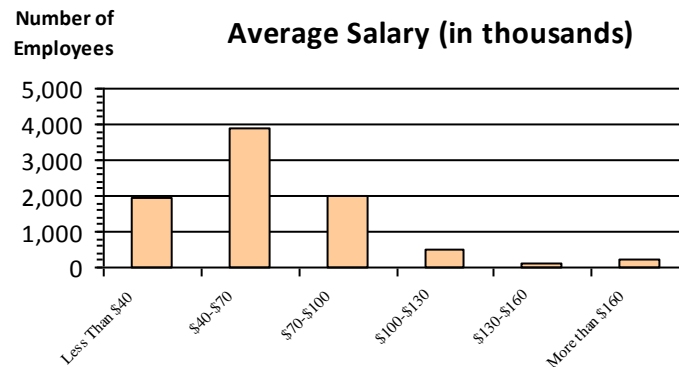
Age

<35	1,809	20.9%
35-54	4,439	51.4%
55+	2,392	27.7%

Length of Service



Average Salary (in thousands)



Educational Attainment

HS or Below	2,120	24.5%
Occupational Program	640	7.4%
Between HS and Bachelors	2,117	24.5%
Bachelors + Post Bachelors	2,650	30.7%
Masters and Post Grad	825	9.5%
Doctorate and Post Doc	232	2.7%

Type of Employment²

Administrative	1,914	22.2%
Professional	2,578	29.8%
Technical	2,105	24.4%
Clerical	652	7.5%
Other White Collar	258	3.0%
Blue Collar	1,132	13.1%

All data unless otherwise noted is provided by the US Office of Personnel Management for the December 2015 reporting period. ¹Non-Federal Workers Data calculated from the US Bureau of Labor Statistics 2015 Annual Averages https://www.bls.gov/news.release/archives/vet_03222016.pdf. ²Employment categories consistent with the definitions given by the US Office of Personnel Management "Introduction to the Position Classification Standards" 2009. For a description of the employment categories, refer to <http://www.opm.gov/policy-data-oversight/classification-qualifications/classifying-general-schedule-positions/positionclassificationintro.pdf>.

Who are the Civilian Federal Employees in South Dakota - 2014

Federal Workers in South Dakota: 8,471

Percentage Who Are Veterans: 22.64%

Non-Federal Workers in South Dakota: 428,000¹

*Percentage Who Are Veterans: 8.64%*¹

Five Largest Federal Employers

VA: 2,323



HHS: 1,501



DOI: 1,361



Agriculture: 905



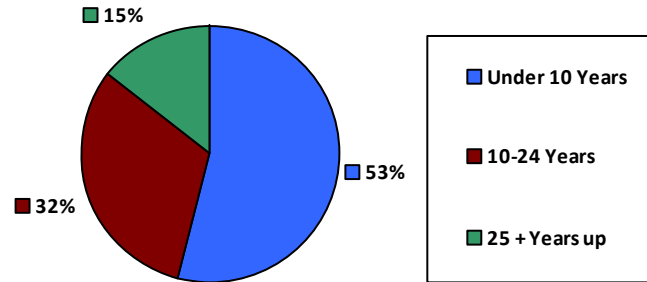
Air Force: 779



Race and Ethnicity

White, non-Hispanic	6,123	72.3%
Black/African American, non-Hispanic	76	0.9%
Hispanic or Latino	130	1.5%
Asian, non-Hispanic	60	0.7%
Two or more races	78	0.9%
American Indian and Alaska Native	1,990	23.5%
Native Hawaiian and Other Pacific Islander	14	0.2%

Length of Service



Educational Attainment

HS or Below	2,121	25.0%
Occupational Program	637	7.5%
Between HS and Bachelors	2,069	24.4%
Bachelors + Post Bachelors	2,557	30.2%
Masters and Post Grad	803	9.5%
Doctorate and Post Doc	220	2.6%

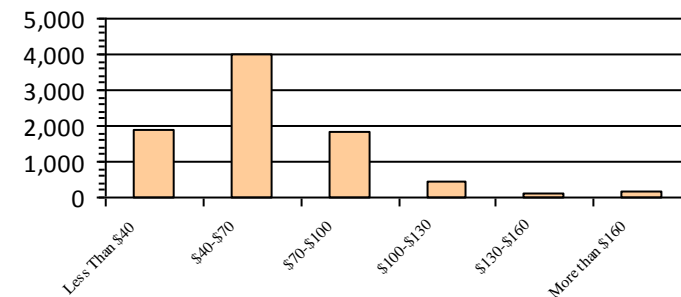
Gender

M	4,284	50.6%
F	4,187	49.4%

Age

<35	1,696	20.0%
35-54	4,445	52.5%
55+	2,330	27.5%

Average Salary (in thousands)



Type of Employment²

Administrative	1,838	21.7%
Professional	2,512	29.7%
Technical	2,122	25.0%
Clerical	613	7.2%
Other White Collar	253	3.0%
Blue Collar	1,132	13.4%

All data unless otherwise noted is provided by the US Office of Personnel Management for the December 2014 reporting period. ¹Non-Federal Workers Data calculated from the US Bureau of Labor Statistics 2014 Annual Averages https://www.bls.gov/news.release/archives/vet_03182015.pdf. ²Employment categories consistent with the definitions given by the US Office of Personnel Management "Introduction to the Position Classification Standards" 2009. For a description of the employment categories, refer to <http://www.opm.gov/policy-data-oversight/classification-qualifications/classifying-general-schedule-positions/positionclassificationintro.pdf>.

Who are the Civilian Federal Employees in South Dakota - 2013

Federal Workers in South Dakota: 8,465

Percentage Who Are Veterans: 22.44%

Non-Federal Workers in South Dakota: 423,000¹

Percentage Who Are Veterans: 9.22%¹

Five Largest Federal Employers

VA: 2,247



HHS: 1,490



DOI: 1,400



Agriculture: 939



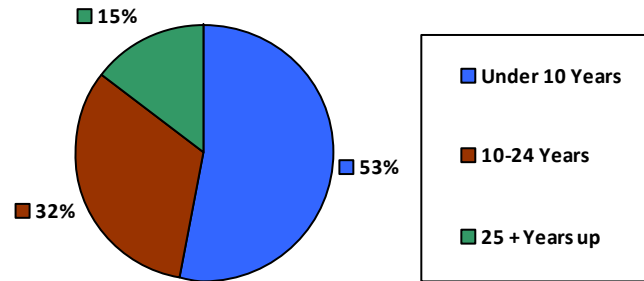
Air Force: 802



Race and Ethnicity

White, non-Hispanic	6,146	72.6%
Black/African American, non-Hispanic	65	0.8%
Hispanic or Latino	121	1.4%
Asian, non-Hispanic	60	0.7%
Two or more races	76	0.9%
American Indian and Alaska Native	1,987	23.5%
Native Hawaiian and Other Pacific Islander	9	0.1%

Length of Service



Educational Attainment

HS or Below	2,129	25.1%
Occupational Program	656	7.7%
Between HS and Bachelors	2,083	24.6%
Bachelors + Post Bachelors	2,538	30.0%
Masters and Post Grad	773	9.1%
Doctorate and Post Doc	214	2.5%

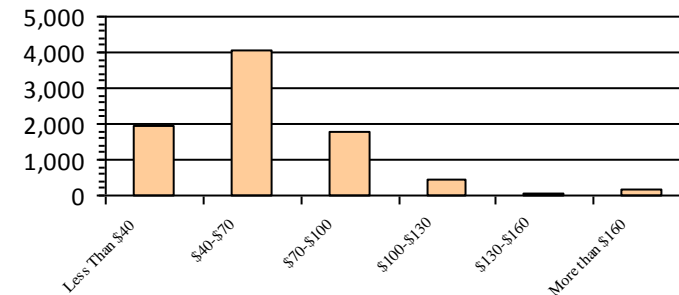
Gender

M	4,284	50.6%
F	4,181	49.4%

Age

<35	1,666	19.7%
35-54	4,476	52.9%
55+	2,323	27.4%

Average Salary (in thousands)



Type of Employment²

Administrative	1,824	21.5%
Professional	2,519	29.8%
Technical	2,142	25.3%
Clerical	630	7.4%
Other White Collar	237	2.8%
Blue Collar	1,111	13.1%

All data unless otherwise noted is provided by the US Office of Personnel Management for the December 2013 reporting period. ¹Non-Federal Workers Data calculated from the US Bureau of Labor Statistics 2013 Annual Averages https://www.bls.gov/news.release/archives/vet_03202014.pdf. ²Employment categories consistent with the definitions given by the US Office of Personnel Management "Introduction to the Position Classification Standards" 2009. For a description of the employment categories, refer to <http://www.opm.gov/policy-data-oversight/classification-qualifications/classifying-general-schedule-positions/positionclassificationintro.pdf>.