

Who are the Civilian Federal Employees in South Carolina - 2022

Federal Workers in South Carolina: 25,498

Percentage Who Are Veterans: 38.91%

Non-Federal Workers in South Carolina: 2,254,000¹

Percentage Who Are Veterans: 7.76%¹

Five Largest Federal Employers

VA: 7,689



Navy: 4,168



Army: 3,021



Air Force: 1,807



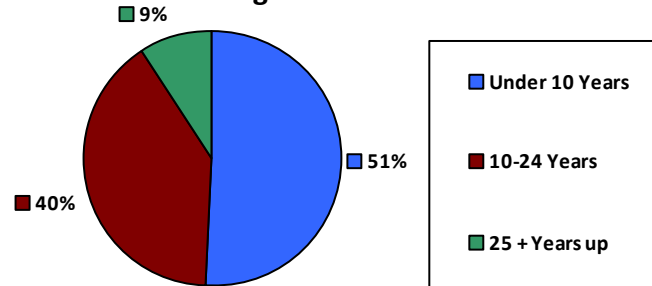
Justice: 1,602



Race and Ethnicity

White, non-Hispanic	14,776	57.9%
Black/African American, non-Hispanic	8,312	32.6%
Hispanic or Latino	944	3.7%
Asian, non-Hispanic	618	2.4%
Two or more races	402	1.6%
American Indian and Alaska Native	233	0.9%
Native Hawaiian and Other Pacific Islander	83	0.3%

Length of Service



Educational Attainment

HS or Below	7,249	28.4%
Occupational Program	443	1.7%
Between HS and Bachelors	4,051	15.9%
Bachelors + Post Bachelors	8,114	31.8%
Masters and Post Grad	4,814	18.9%
Doctorate and Post Doc	803	3.1%

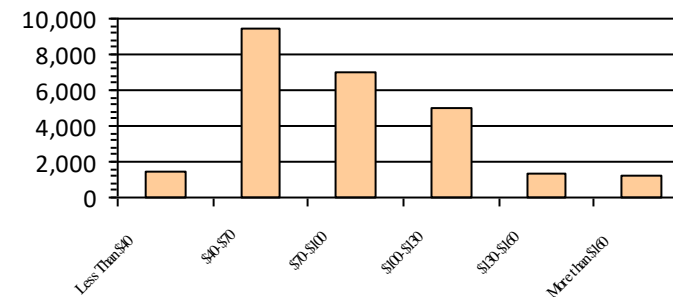
Gender

M	13,617	53.4%
F	11,881	46.6%

Age

<35	3,700	14.5%
35-54	14,016	55.0%
55+	7,782	30.5%

Average Salary (in thousands)



Type of Employment²

Administrative	8,915	35.0%
Professional	7,188	28.2%
Technical	4,486	17.6%
Clerical	1,645	6.5%
Other White Collar	1,066	4.2%
Blue Collar	2,167	8.5%

All data unless otherwise noted is provided by the US Office of Personnel Management for the December 2022 reporting period. ¹Non-Federal Workers Data calculated from the US Bureau of Labor Statistics 2022 Annual Averages <https://www.bls.gov/news.release/pdf/vet.pdf>. ²Employment categories consistent with the definitions given by the US Office of Personnel Management "Introduction to the Position Classification Standards" 2009. For a description of the employment categories, refer to <http://www.opm.gov/policy-data-oversight/classification-qualifications/classifying-general-schedule-positions/positionclassificationintro.pdf>.