

Who are the Civilian Federal Employees in

Oregon - 2021

Federal Workers in Oregon: 20,610

Percentage Who Are Veterans: 23.50%

Non-Federal Workers in Oregon: 2,028,000¹

Percentage Who Are Veterans: 7.15%¹

Five Largest Federal Employers

VA: 6,182



Agriculture: 3,706



DOI: 2,454



Army: 2,233



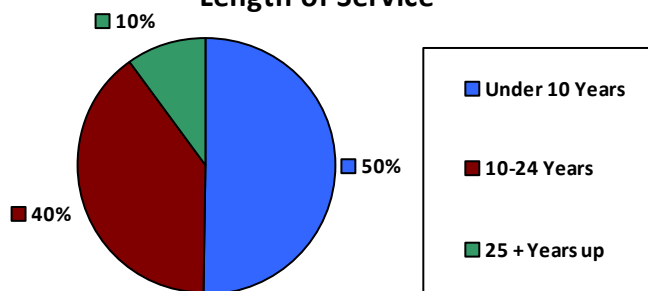
Energy: 1,216



Race and Ethnicity

White, non-Hispanic	16,649	80.8%
Black/African American, non-Hispanic	503	2.4%
Hispanic or Latino	1,152	5.6%
Asian, non-Hispanic	1,024	5.0%
Two or more races	543	2.6%
American Indian and Alaska Native	539	2.6%
Native Hawaiian and Other Pacific Islander	112	0.5%

Length of Service



Educational Attainment

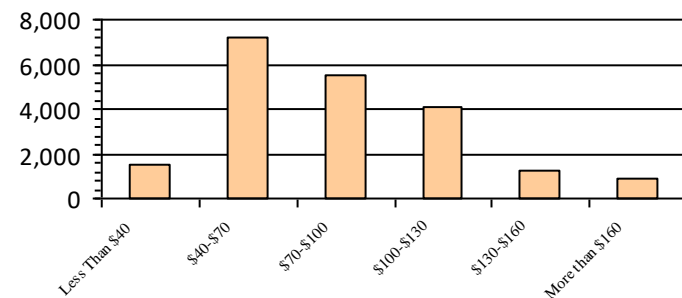
HS or Below	5,365	26.0%
Occupational Program	387	1.9%
Between HS and Bachelors	4,157	20.2%
Bachelors + Post Bachelors	7,082	34.4%
Masters and Post Grad	2,793	13.5%
Doctorate and Post Doc	760	3.7%

Gender

Age

M	11,500	55.8%	<35	3,852	18.7%
			35-54	11,559	56.1%
F	9,110	44.2%	55+	5,199	25.2%

Average Salary (in thousands)



Type of Employment²

Administrative	6,757	32.8%
Professional	4,645	22.5%
Technical	1,117	5.4%
Clerical	345	1.7%
Other White Collar	1,983	9.6%
Blue Collar	2,183	10.6%

All data unless otherwise noted is provided by the US Office of Personnel Management for the December 2015 reporting period. ¹Non-Federal Workers Data calculated from the US Bureau of Labor Statistics 2015 Annual Averages https://www.bls.gov/news.release/archives/vet_03222016.pdf. ²Employment categories consistent with the definitions given by the US Office of Personnel Management "Introduction to the Position Classification Standards" 2009. For a description of the employment categories, refer to <http://www.opm.gov/policy-data-oversight/classification-qualifications/classifying-general-schedule-positions/positionclassificationintro.pdf>.

Who are the Civilian Federal Employees in

Oregon - 2020

Federal Workers in Oregon: 21,034

Percentage Who Are Veterans: 24.23%

Non-Federal Workers in Oregon: 1,937,000¹

Percentage Who Are Veterans: 6.87%¹

Five Largest Federal Employers

VA: 6,398



Agriculture: 3,630



DOI: 2,528



Army: 2,287



Energy: 1,206



Race and Ethnicity

White, non-Hispanic	17,180	81.7%
Black/African American, non-Hispanic	523	2.5%
Hispanic or Latino	1,077	5.1%
Asian, non-Hispanic	1,010	4.8%
Two or more races	515	2.4%
American Indian and Alaska Native	566	2.7%
Native Hawaiian and Other Pacific Islander	99	0.5%

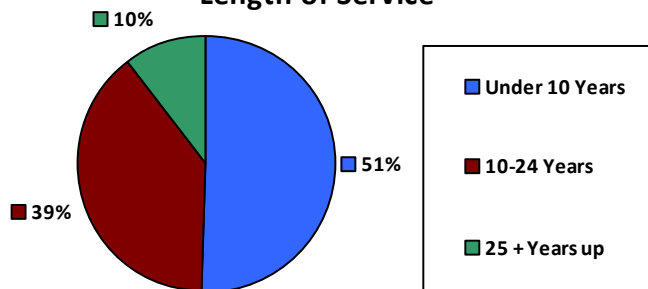
Gender

M	11,812	56.2%
F	9,222	43.8%

Age

<35	4,084	19.4%
35-54	11,659	55.4%
55+	5,291	25.2%

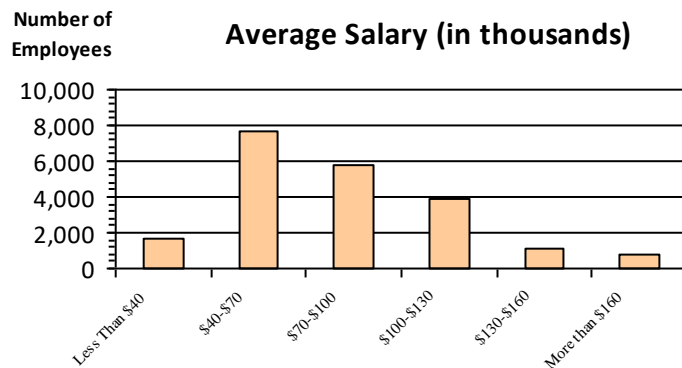
Length of Service



Educational Attainment

HS or Below	5,516	26.2%
Occupational Program	405	1.9%
Between HS and Bachelors	4,333	20.6%
Bachelors + Post Bachelors	7,120	33.8%
Masters and Post Grad	2,828	13.4%
Doctorate and Post Doc	742	3.5%

Average Salary (in thousands)



Type of Employment²

Administrative	5,765	27.4%
Professional	6,779	32.2%
Technical	4,812	22.9%
Clerical	1,099	5.2%
Other White Collar	382	1.8%
Blue Collar	2,183	10.4%

All data unless otherwise noted is provided by the US Office of Personnel Management for the December 2015 reporting period. ¹Non-Federal Workers Data calculated from the US Bureau of Labor Statistics 2015 Annual Averages https://www.bls.gov/news.release/archives/vet_03222016.pdf. ²Employment categories consistent with the definitions given by the US Office of Personnel Management "Introduction to the Position Classification Standards" 2009. For a description of the employment categories, refer to <http://www.opm.gov/policy-data-oversight/classification-qualifications/classifying-general-schedule-positions/positionclassificationintro.pdf>.

Who are the Civilian Federal Employees in

Oregon - 2019

Federal Workers in Oregon: 20,543

Percentage Who Are Veterans: 24.48%

Non-Federal Workers in Oregon: 2,001,000¹

Percentage Who Are Veterans: 6.30%¹

Five Largest Federal Employers

VA: 6,007



Agriculture: 3,457



DOI: 2,488



Army: 2,279



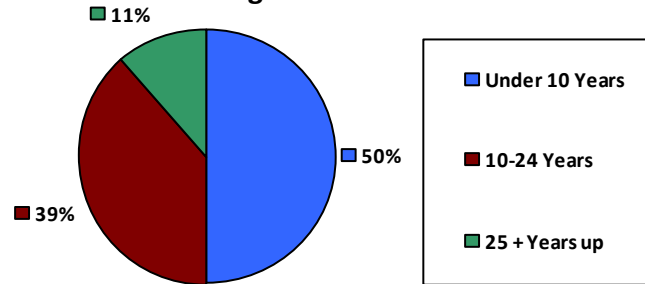
Energy: 1,179



Race and Ethnicity

White, non-Hispanic	16,861	82.1%
Black/African American, non-Hispanic	492	2.4%
Hispanic or Latino	1,057	5.1%
Asian, non-Hispanic	931	4.5%
Two or more races	489	2.4%
American Indian and Alaska Native	570	2.8%
Native Hawaiian and Other Pacific Islander	91	0.4%

Length of Service



Educational Attainment

HS or Below	4,902	23.9%
Occupational Program	712	3.5%
Between HS and Bachelors	4,484	21.8%
Bachelors + Post Bachelors	6,874	33.5%
Masters and Post Grad	2,658	12.9%
Doctorate and Post Doc	835	4.1%

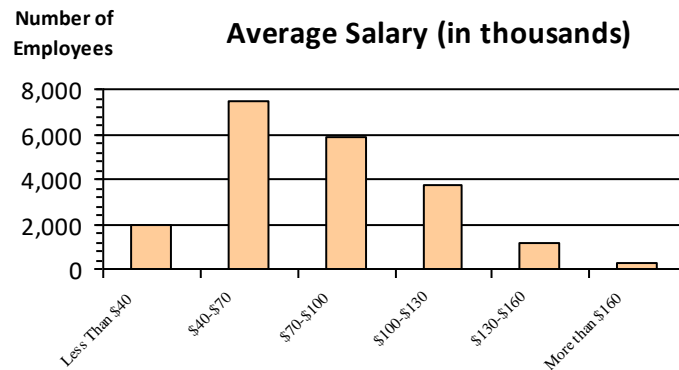
Gender

M	11,652	56.7%
F	8,890	43.3%

Age

<35	3,897	19.0%
35-54	11,210	54.6%
55+	5,436	26.5%

Average Salary (in thousands)



Type of Employment²

Administrative	5,561	27.1%
Professional	6,573	32.0%
Technical	4,672	22.7%
Clerical	1,183	5.8%
Other White Collar	406	2.0%
Blue Collar	2,136	10.4%

All data unless otherwise noted is provided by the US Office of Personnel Management for the December 2015 reporting period. ¹Non-Federal Workers Data calculated from the US Bureau of Labor Statistics 2015 Annual Averages https://www.bls.gov/news.release/archives/vet_03222016.pdf. ²Employment categories consistent with the definitions given by the US Office of Personnel Management "Introduction to the Position Classification Standards" 2009. For a description of the employment categories, refer to <http://www.opm.gov/policy-data-oversight/classification-qualifications/classifying-general-schedule-positions/positionclassificationintro.pdf>.

Who are the Civilian Federal Employees in

Oregon - 2018

Federal Workers in Oregon: 20,578

Percentage Who Are Veterans: 24.66%

Non-Federal Workers in Oregon: 1,980,000¹

Percentage Who Are Veterans: 6.46%¹

Five Largest Federal Employers

VA: 5,949



Agriculture: 3,511



DOI: 2,516



Army: 2,362



Energy: 1,181



Race and Ethnicity

White, non-Hispanic	17,011	82.7%
Black/African American, non-Hispanic	489	2.4%
Hispanic or Latino	1,003	4.9%
Asian, non-Hispanic	920	4.5%
Two or more races	464	2.3%
American Indian and Alaska Native	580	2.8%
Native Hawaiian and Other Pacific Islander	87	0.4%

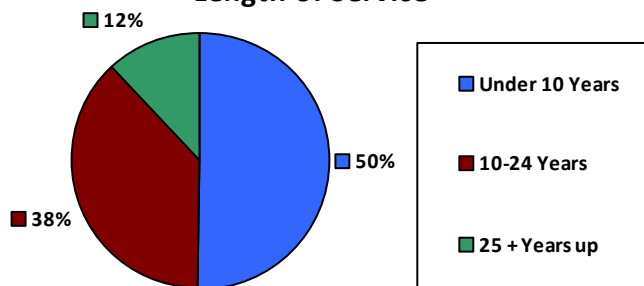
Gender

M	11,816	57.5%
F	8,749	42.5%

Age

<35	4,065	19.8%
35-54	11,051	53.7%
55+	5,462	26.5%

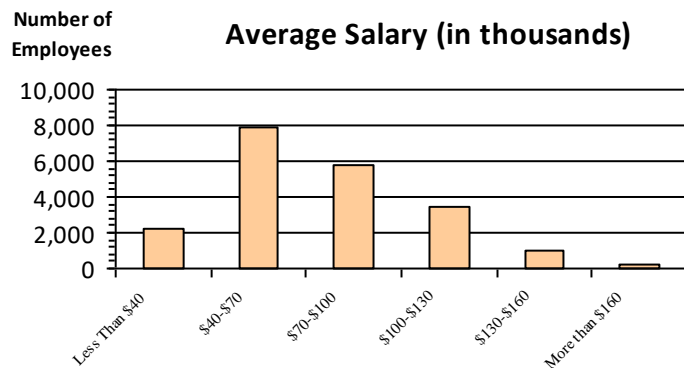
Length of Service



Educational Attainment

HS or Below	4,753	23.1%
Occupational Program	742	3.6%
Between HS and Bachelors	4,580	22.3%
Bachelors + Post Bachelors	6,967	33.9%
Masters and Post Grad	2,620	12.7%
Doctorate and Post Doc	814	4.0%

Average Salary (in thousands)



Type of Employment²

Administrative	5,515	26.8%
Professional	6,510	31.6%
Technical	4,748	23.1%
Clerical	1,115	5.4%
Other White Collar	390	1.9%
Blue Collar	2,287	11.1%

All data unless otherwise noted is provided by the US Office of Personnel Management for the December 2018 reporting period. ¹Non-Federal Workers Data calculated from the US Bureau of Labor Statistics 2018 Annual Averages www.bls.gov/news.release/pdf/vet.pdf. ²Employment categories consistent with the definitions given by the US Office of Personnel Management "Introduction to the Position Classification Standards" 2009. For a description of the employment categories, refer to www.opm.gov/policy-data-oversight/classification-qualifications/classifying-general-schedule-positions/positionclassificationintro.pdf.

Who are the Civilian Federal Employees in

Oregon - 2017

Federal Workers in Oregon: 20,339

Percentage Who Are Veterans: 25.19%

Non-Federal Workers in Oregon: 2,009,000¹

Percentage Who Are Veterans: 7.78%²

Five Largest Federal Employers

VA: 5,749



Agriculture: 3,478



DOI: 2,564



Army: 2,281



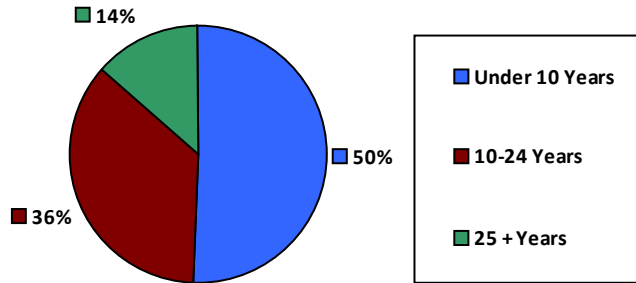
Energy: 1,256



Race and Ethnicity

White, non-Hispanic	16,922	83.2%
Black/African American, non-Hispanic	478	2.3%
Hispanic or Latino	896	4.4%
Asian, non-Hispanic	874	4.3%
Two or more races	448	2.2%
American Indian and Alaska Native	625	3.1%
Native Hawaiian and Other Pacific Islander	80	0.4%

Length of Service



Educational Attainment

HS or Below	4,483	22.0%
Occupational Program	730	3.6%
Between HS and Bachelors	4,683	23.0%
Bachelors + Post Bachelors	7,024	34.5%
Masters and Post Grad	2,600	12.8%
Doctorate and Post Doc	779	3.8%

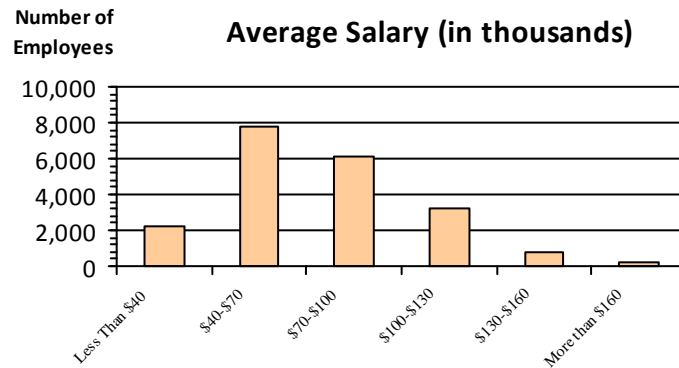
Gender

M	11,730	57.7%
F	8,599	42.3%

Age

<35	3,877	19.1%
35-54	10,929	53.7%
55+	5,533	27.2%

Average Salary (in thousands)



Type of Employment²

Administrative	5,553	27.3%
Professional	6,529	32.1%
Technical	4,477	22.0%
Clerical	1,070	5.3%
Other White Collar	389	1.9%
Blue Collar	2,320	11.4%

All data unless otherwise noted is provided by the US Office of Personnel Management for the December 2017 reporting period. Non-Federal Workers Data calculated from the US Bureau of Labor Statistics 2017 Annual Averages <https://www.bls.gov/news.release/vet.htm>.¹ Employment categories consistent with the definitions given by the US Office of Personnel Management "Introduction to the Position Classification Standards" (Revised: 2009), available at <https://www.opm.gov/policy-data-oversight/classification-qualifications/classifying-general-schedule-positions/positionclassificationintro.pdf>.²

Who are the Civilian Federal Employees in

Oregon - 2016

Federal Workers in Oregon: 20,684

Percentage Who Are Veterans: 25.00%

Non-Federal Workers in Oregon: 1,943,000¹

Percentage Who Are Veterans: 7.31%¹

Five Largest Federal Employers

VA: 5,626



Agriculture: 3,647



DOI: 2,638



Army: 2,294



Energy: 1,331



Race and Ethnicity

White, non-Hispanic	17,305	83.7%
Black/African American, non-Hispanic	473	2.3%
Hispanic or Latino	895	4.3%
Asian, non-Hispanic	852	4.1%
Two or more races	430	2.1%
American Indian and Alaska Native	638	3.1%
Native Hawaiian and Other Pacific Islander	82	0.4%

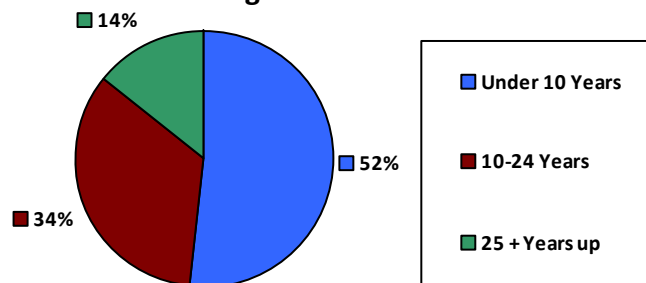
Gender

M	11,933	57.7%
F	8,750	42.3%

Age

<35	4,048	19.6%
35-54	10,953	52.9%
55+	5,683	27.5%

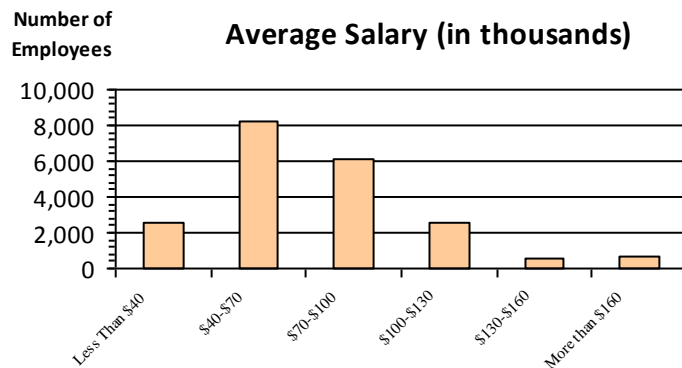
Length of Service



Educational Attainment

HS or Below	4,704	22.7%
Occupational Program	776	3.8%
Between HS and Bachelors	4,783	23.1%
Bachelors + Post Bachelors	7,049	34.1%
Masters and Post Grad	2,585	12.5%
Doctorate and Post Doc	735	3.6%

Average Salary (in thousands)



Type of Employment²

Administrative	5,575	27.0%
Professional	6,463	31.2%
Technical	4,751	23.0%
Clerical	1,133	5.5%
Other White Collar	411	2.0%
Blue Collar	2,350	11.4%

All data unless otherwise noted is provided by the US Office of Personnel Management for the December 2016 reporting period. ¹Non-Federal Workers Data calculated from the US Bureau of Labor Statistics 2015 Annual Averages https://www.bls.gov/news.release/archives/vet_03222016.pdf. ²Employment categories consistent with the definitions given by the US Office of Personnel Management "Introduction to the Position Classification Standards" 2009. For a description of the employment categories, refer to <http://www.opm.gov/policy-data-oversight/classification-qualifications/classifying-general-schedule-positions/positionclassificationintro.pdf>.

Who are the Civilian Federal Employees in

Oregon - 2015

Federal Workers in Oregon: 20,433

Percentage Who Are Veterans: 25.03%

Non-Federal Workers in Oregon: 1,832,000¹

Percentage Who Are Veterans: 8.13%¹

Five Largest Federal Employers

VA: 5,512



Agriculture: 3,704



DOI: 2,594



Army: 2,197



Energy: 1,342



Race and Ethnicity

White, non-Hispanic	17,191	84.1%
Black/African American, non-Hispanic	464	2.3%
Hispanic or Latino	850	4.2%
Asian, non-Hispanic	826	4.0%
Two or more races	366	1.8%
American Indian and Alaska Native	656	3.2%
Native Hawaiian and Other Pacific Islander	74	0.4%

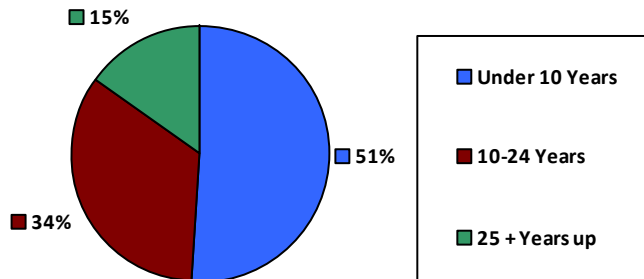
Gender

M	11,726	57.4%
F	8,707	42.6%

Age

<35	4,020	19.7%
35-54	10,687	52.3%
55+	5,726	28.0%

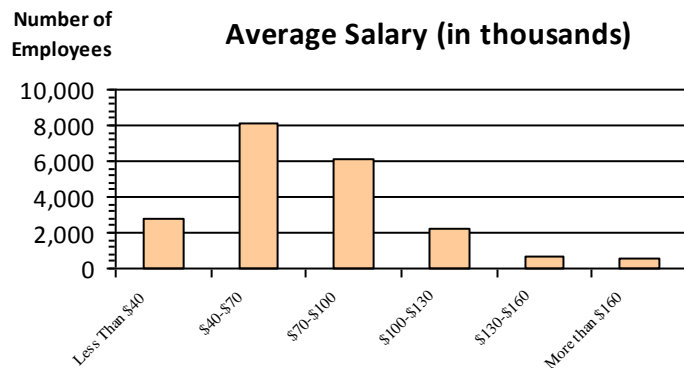
Length of Service



Educational Attainment

HS or Below	4,620	22.6%
Occupational Program	775	3.8%
Between HS and Bachelors	4,790	23.4%
Bachelors + Post Bachelors	7,079	34.6%
Masters and Post Grad	2,480	12.1%
Doctorate and Post Doc	650	3.2%

Average Salary (in thousands)



Type of Employment²

Administrative	5,520	27.0%
Professional	6,339	31.0%
Technical	4,845	23.7%
Clerical	1,038	5.1%
Other White Collar	435	2.1%
Blue Collar	2,254	11.0%

All data unless otherwise noted is provided by the US Office of Personnel Management for the December 2015 reporting period. ¹Non-Federal Workers Data calculated from the US Bureau of Labor Statistics 2015 Annual Averages https://www.bls.gov/news.release/archives/vet_03222016.pdf. ²Employment categories consistent with the definitions given by the US Office of Personnel Management "Introduction to the Position Classification Standards" 2009. For a description of the employment categories, refer to <http://www.opm.gov/policy-data-oversight/classification-qualifications/classifying-general-schedule-positions/positionclassificationintro.pdf>.

Who are the Civilian Federal Employees in

Oregon - 2014

Federal Workers in Oregon: 20,171

Percentage Who Are Veterans: 24.56%

Non-Federal Workers in Oregon: 1,789,000¹

Percentage Who Are Veterans: 8.72%¹

Five Largest Federal Employers

VA: 5,288



Agriculture: 3,689



DOI: 2,589



Army: 2,184



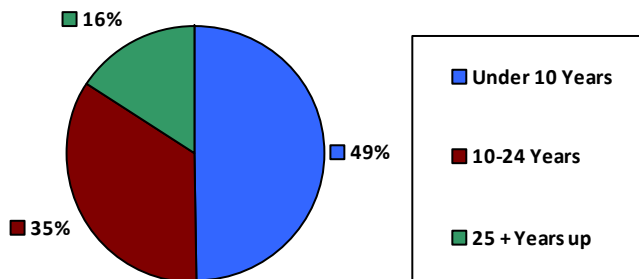
Energy: 1,282



Race and Ethnicity

White, non-Hispanic	17,031	84.4%
Black/African American, non-Hispanic	467	2.3%
Hispanic or Latino	809	4.0%
Asian, non-Hispanic	786	3.9%
Two or more races	337	1.7%
American Indian and Alaska Native	661	3.3%
Native Hawaiian and Other Pacific Islander	73	0.4%

Length of Service



Educational Attainment

HS or Below	4,685	23.2%
Occupational Program	774	3.8%
Between HS and Bachelors	4,811	23.8%
Bachelors + Post Bachelors	6,879	34.1%
Masters and Post Grad	2,345	11.6%
Doctorate and Post Doc	625	3.1%

Gender

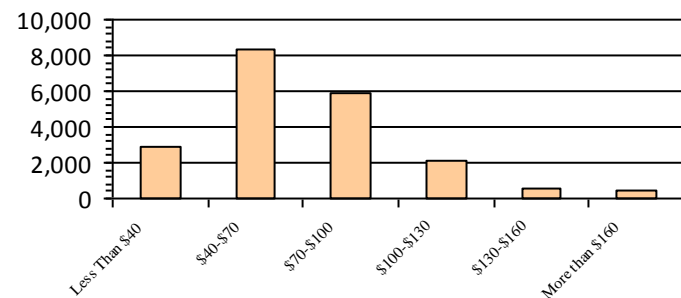
M	11,603	57.5%
F	8,568	42.5%

Age

<35	3,990	19.8%
35-54	10,478	51.9%
55+	5,703	28.3%

Number of Employees

Average Salary (in thousands)



Type of Employment²

Administrative	5,427	26.9%
Professional	6,142	30.4%
Technical	4,839	24.0%
Clerical	1,005	5.0%
Other White Collar	458	2.3%
Blue Collar	2,300	11.4%

All data unless otherwise noted is provided by the US Office of Personnel Management for the December 2014 reporting period. ¹Non-Federal Workers Data calculated from the US Bureau of Labor Statistics 2014 Annual Averages https://www.bls.gov/news.release/archives/vet_03182015.pdf. ²Employment categories consistent with the definitions given by the US Office of Personnel Management "Introduction to the Position Classification Standards" 2009. For a description of the employment categories, refer to <http://www.opm.gov/policy-data-oversight/classification-qualifications/classifying-general-schedule-positions/positionclassificationintro.pdf>.

Who are the Civilian Federal Employees in

Oregon - 2013

Federal Workers in Oregon: 20,023

Percentage Who Are Veterans: 24.10%

Non-Federal Workers in Oregon: 1,736,000¹

Percentage Who Are Veterans: 8.58%¹

Five Largest Federal Employers

VA: 5,036



Agriculture: 3,656



DOI: 2,705



Army: 2,168



Energy: 1,366



Race and Ethnicity

White, non-Hispanic	16,955	84.7%
Black/African American, non-Hispanic	457	2.3%
Hispanic or Latino	791	4.0%
Asian, non-Hispanic	754	3.8%
Two or more races	294	1.5%
American Indian and Alaska Native	701	3.5%
Native Hawaiian and Other Pacific Islander	64	0.3%

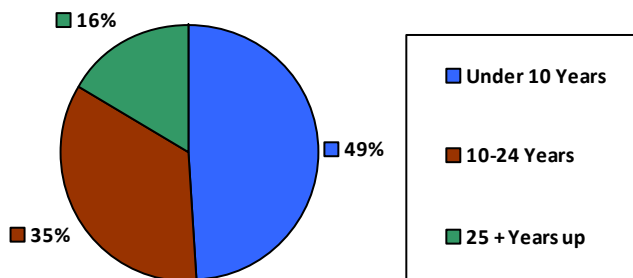
Gender

M	11,515	57.5%
F	8,508	42.5%

Age

<35	3,885	19.4%
35-54	10,276	51.3%
55+	5,862	29.3%

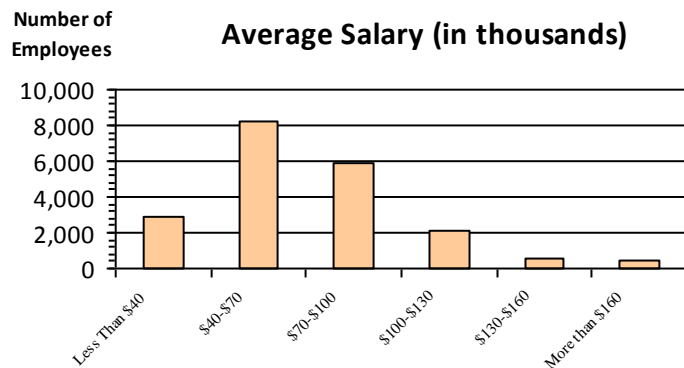
Length of Service



Educational Attainment

HS or Below	4,669	23.3%
Occupational Program	752	3.8%
Between HS and Bachelors	4,863	24.3%
Bachelors + Post Bachelors	6,775	33.8%
Masters and Post Grad	2,279	11.4%
Doctorate and Post Doc	623	3.1%

Average Salary (in thousands)



Type of Employment²

Administrative	5,448	27.2%
Professional	6,064	30.3%
Technical	4,576	22.9%
Clerical	1,168	5.8%
Other White Collar	478	2.4%
Blue Collar	2,288	11.4%

All data unless otherwise noted is provided by the US Office of Personnel Management for the December 2013 reporting period. ¹Non-Federal Workers Data calculated from the US Bureau of Labor Statistics 2013 Annual Averages https://www.bls.gov/news.release/archives/vet_03202014.pdf. ²Employment categories consistent with the definitions given by the US Office of Personnel Management "Introduction to the Position Classification Standards" 2009. For a description of the employment categories, refer to <http://www.opm.gov/policy-data-oversight/classification-qualifications/classifying-general-schedule-positions/positionclassificationintro.pdf>.