

## Who are the Civilian Federal Employees in

# Missouri - 2022

**Federal Workers in Missouri: 39,605**

Percentage Who Are Veterans: 25.38%

**Non-Federal Workers in Missouri: 2,914,000<sup>1</sup>**

Percentage Who Are Veterans: 6.04%<sup>1</sup>

### Five Largest Federal Employers

VA: 11,366



Treasury: 5,954



Army: 4,798



Agriculture: 3,162



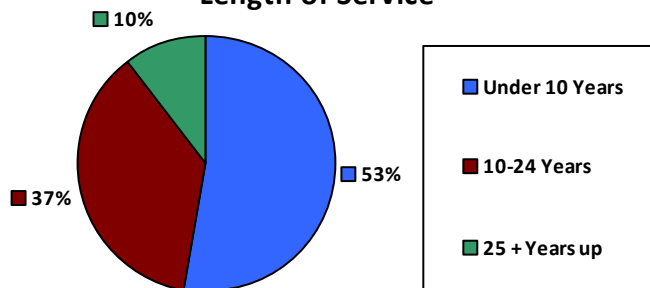
DHS: 2,597



### Race and Ethnicity

White, non-Hispanic	27,877	70.4%
Black/African American, non-Hispanic	8,264	20.9%
Hispanic or Latino	1,317	3.3%
Asian, non-Hispanic	998	2.5%
Two or more races	697	1.8%
American Indian and Alaska Native	285	0.7%
Native Hawaiian and Other Pacific Islander	82	0.2%

### Length of Service



### Educational Attainment

HS or Below	13,398	33.8%
Occupational Program	765	1.9%
Between HS and Bachelors	6,900	17.4%
Bachelors + Post Bachelors	11,985	30.3%
Masters and Post Grad	5,544	14.0%
Doctorate and Post Doc	974	2.5%

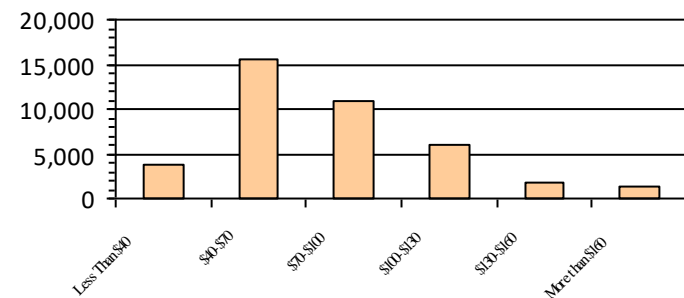
### Gender

M	18,706	47.2%
F	20,899	52.8%

### Age

<35	6,639	16.8%
35-54	21,239	53.6%
55+	11,727	29.6%

### Average Salary (in thousands)



### Type of Employment<sup>2</sup>

Administrative	13,341	33.7%
Professional	9,422	23.8%
Technical	8,898	22.5%
Clerical	4,393	11.1%
Other White Collar	938	2.4%
Blue Collar	2,565	6.5%

All data unless otherwise noted is provided by the US Office of Personnel Management for the December 2022 reporting period. <sup>1</sup>Non-Federal Workers Data calculated from the US Bureau of Labor Statistics 2022 Annual Averages <https://www.bls.gov/news.release/pdf/vet.pdf>. <sup>2</sup>Employment categories consistent with the definitions given by the US Office of Personnel Management "Introduction to the Position Classification Standards" 2009. For a description of the employment categories, refer to <http://www.opm.gov/policy-data-oversight/classification-qualifications/classifying-general-schedule-positions/positionclassificationintro.pdf>.