

# Who are the Civilian Federal Employees in Minnesota - 2021

**Federal Workers in Minnesota: 19,663**

Percentage Who Are Veterans: 23.10%

**Non-Federal Workers in Minnesota: 2,829,000<sup>1</sup>**

Percentage Who Are Veterans: 5.09%<sup>1</sup>

## Five Largest Federal Employers

VA: 8,082



DHS: 1,971



Agriculture: 1,798



Justice: 1,516



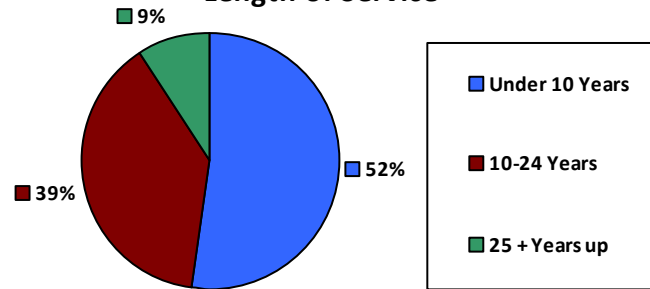
Army: 1,403



### Race and Ethnicity

White, non-Hispanic	16,505	83.9%
Black/African American, non-Hispanic	1,012	5.1%
Hispanic or Latino	561	2.9%
Asian, non-Hispanic	753	3.8%
Two or more races	295	1.5%
American Indian and Alaska Native	485	2.5%
Native Hawaiian and Other Pacific Islander	27	0.1%

### Length of Service



### Educational Attainment

HS or Below	4,752	24.2%
Occupational Program	589	3.0%
Between HS and Bachelors	3,935	20.0%
Bachelors + Post Bachelors	7,235	36.8%
Masters and Post Grad	2,379	12.1%
Doctorate and Post Doc	715	3.6%

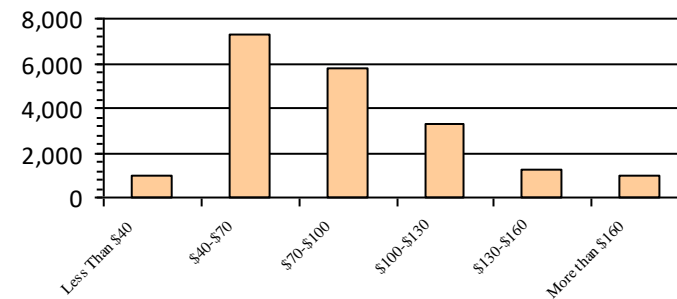
### Gender

M	10,122	51.5%
F	9,541	48.5%

### Age

<35	4,101	20.9%
35-54	10,870	55.3%
55+	4,692	23.9%

### Average Salary (in thousands)



### Type of Employment<sup>2</sup>

Administrative	5,751	29.2%
Professional	3,898	19.8%
Technical	1,216	6.2%
Clerical	591	3.0%
Other White Collar	1,508	7.7%
Blue Collar	1,636	8.3%

All data unless otherwise noted is provided by the US Office of Personnel Management for the December 2015 reporting period. <sup>1</sup>Non-Federal Workers Data calculated from the US Bureau of Labor Statistics 2015 Annual Averages [https://www.bls.gov/news.release/archives/vet\\_03222016.pdf](https://www.bls.gov/news.release/archives/vet_03222016.pdf). <sup>2</sup>Employment categories consistent with the definitions given by the US Office of Personnel Management "Introduction to the Position Classification Standards" 2009. For a description of the employment categories, refer to <http://www.opm.gov/policy-data-oversight/classification-qualifications/classifying-general-schedule-positions/positionclassificationintro.pdf>.

## Who are the Civilian Federal Employees in

# Minnesota - 2020

**Federal Workers in Minnesota: 19,919**

Percentage Who Are Veterans: 23.86%

**Non-Federal Workers in Minnesota: 2,840,000**<sup>1</sup>

Percentage Who Are Veterans: 4.75%<sup>1</sup>

### Five Largest Federal Employers

VA: 8,101



DHS: 2,032



Agriculture: 1,747



Justice: 1,535



Army: 1,486



### Race and Ethnicity

White, non-Hispanic	16,799	84.3%
Black/African American, non-Hispanic	1,057	5.3%
Hispanic or Latino	548	2.8%
Asian, non-Hispanic	723	3.6%
Two or more races	271	1.4%
American Indian and Alaska Native	467	2.3%
Native Hawaiian and Other Pacific Islander	29	0.1%

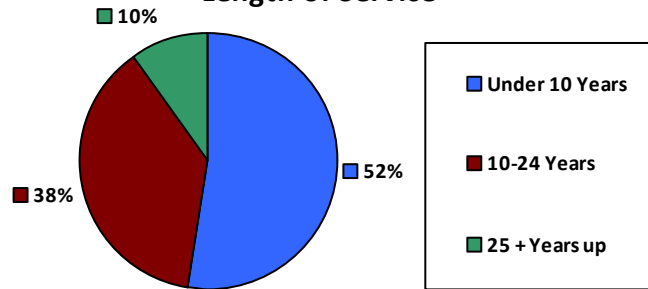
### Gender

M	10,388	52.1%
F	9,531	47.8%

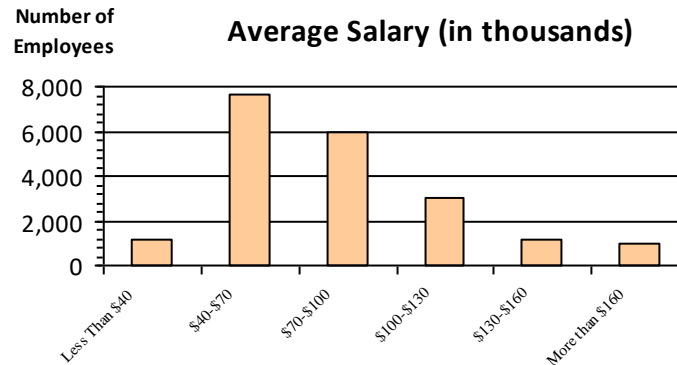
### Age

<35	4,446	22.3%
35-54	10,765	54.0%
55+	4,708	23.6%

### Length of Service



### Average Salary (in thousands)



### Educational Attainment

HS or Below	4,936	24.8%
Occupational Program	615	3.1%
Between HS and Bachelors	4,032	20.2%
Bachelors + Post Bachelors	7,242	36.4%
Masters and Post Grad	2,347	11.8%
Doctorate and Post Doc	682	3.4%

### Type of Employment<sup>2</sup>

Administrative	6,734	33.8%
Professional	5,610	28.2%
Technical	3,981	20.0%
Clerical	1,281	6.4%
Other White Collar	622	3.1%
Blue Collar	1,636	8.2%

All data unless otherwise noted is provided by the US Office of Personnel Management for the December 2015 reporting period. <sup>1</sup>Non-Federal Workers Data calculated from the US Bureau of Labor Statistics 2015 Annual Averages [https://www.bls.gov/news.release/archives/vet\\_03222016.pdf](https://www.bls.gov/news.release/archives/vet_03222016.pdf). <sup>2</sup>Employment categories consistent with the definitions given by the US Office of Personnel Management "Introduction to the Position Classification Standards" 2009. For a description of the employment categories, refer to <http://www.opm.gov/policy-data-oversight/classification-qualifications/classifying-general-schedule-positions/positionclassificationintro.pdf>.

# Who are the Civilian Federal Employees in Minnesota - 2019

**Federal Workers in Minnesota: 19,452**  
*Percentage Who Are Veterans: 24.03%*

**Non-Federal Workers in Minnesota: 2,930,000**<sup>1</sup>  
*Percentage Who Are Veterans: 4.50%*<sup>1</sup>

## Five Largest Federal Employers

VA: 7,914



DHS: 2,073



Agriculture: 1,677



Justice: 1,514



Army: 1,336



### Race and Ethnicity

White, non-Hispanic	16,459	84.6%
Black/African American, non-Hispanic	1,000	5.1%
Hispanic or Latino	532	2.7%
Asian, non-Hispanic	668	3.4%
Two or more races	261	1.3%
American Indian and Alaska Native	482	2.5%
Native Hawaiian and Other Pacific Islander	29	0.1%

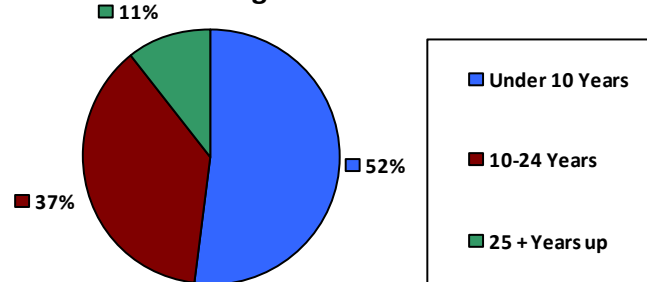
### Gender

M	10,133	52.1%
F	9,316	47.9%

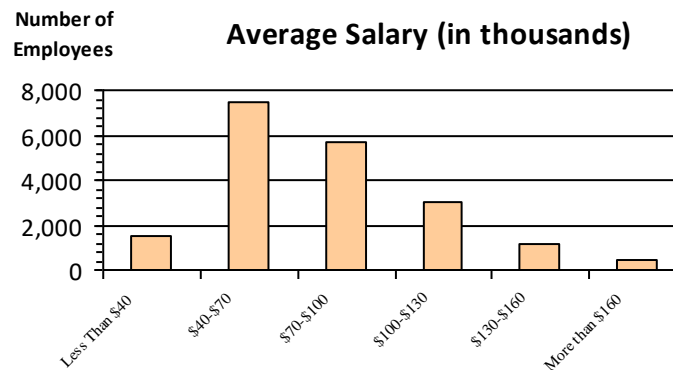
### Age

<35	4,335	22.3%
35-54	10,376	53.3%
55+	4,741	24.4%

### Length of Service



### Average Salary (in thousands)



### Educational Attainment

HS or Below	4,273	22.0%
Occupational Program	1,028	5.3%
Between HS and Bachelors	4,123	21.2%
Bachelors + Post Bachelors	7,082	36.4%
Masters and Post Grad	2,146	11.0%
Doctorate and Post Doc	746	3.8%

### Type of Employment<sup>2</sup>

Administrative	6,484	33.3%
Professional	5,450	28.0%
Technical	3,864	19.9%
Clerical	1,370	7.0%
Other White Collar	637	3.3%
Blue Collar	1,589	8.2%

All data unless otherwise noted is provided by the US Office of Personnel Management for the December 2015 reporting period. <sup>1</sup>Non-Federal Workers Data calculated from the US Bureau of Labor Statistics 2015 Annual Averages [https://www.bls.gov/news.release/archives/vet\\_03222016.pdf](https://www.bls.gov/news.release/archives/vet_03222016.pdf). <sup>2</sup>Employment categories consistent with the definitions given by the US Office of Personnel Management "Introduction to the Position Classification Standards" 2009. For a description of the employment categories, refer to <http://www.opm.gov/policy-data-oversight/classification-qualifications/classifying-general-schedule-positions/positionclassificationintro.pdf>.

## Who are the Civilian Federal Employees in

# Minnesota - 2018

**Federal Workers in Minnesota: 19,339**

*Percentage Who Are Veterans: 24.65%*

**Non-Federal Workers in Minnesota: 2,907,000**<sup>1</sup>

*Percentage Who Are Veterans: 5.13%*<sup>1</sup>

### Five Largest Federal Employers

VA: 7,905



DHS: 1,921



Agriculture: 1,649



Justice: 1,488



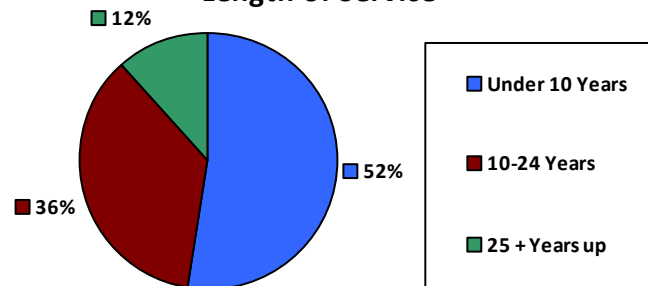
Army: 1,329



### Race and Ethnicity

White, non-Hispanic	16,433	85.0%
Black/African American, non-Hispanic	967	5.0%
Hispanic or Latino	524	2.7%
Asian, non-Hispanic	611	3.2%
Two or more races	264	1.4%
American Indian and Alaska Native	510	2.6%
Native Hawaiian and Other Pacific Islander	28	0.1%

### Length of Service



### Educational Attainment

HS or Below	4,065	21.0%
Occupational Program	1,083	5.6%
Between HS and Bachelors	4,205	21.7%
Bachelors + Post Bachelors	7,117	36.8%
Masters and Post Grad	2,132	11.0%
Doctorate and Post Doc	694	3.6%

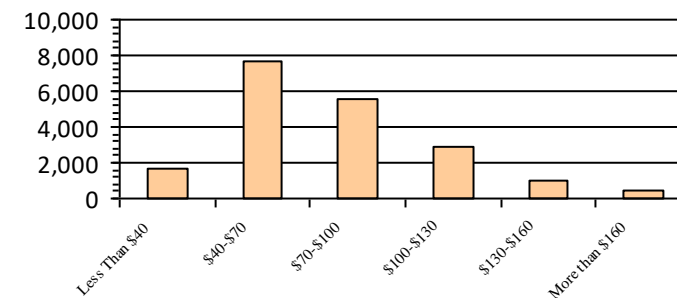
### Gender

M	10,135	52.5%
F	9,150	47.4%

### Age

<35	4,404	22.8%
35-54	10,310	53.3%
55+	4,625	23.9%

### Average Salary (in thousands)



### Type of Employment<sup>2</sup>

Administrative	6,357	32.9%
Professional	5,390	27.9%
Technical	3,967	20.5%
Clerical	1,320	6.8%
Other White Collar	588	3.0%
Blue Collar	1,669	8.6%

All data unless otherwise noted is provided by the US Office of Personnel Management for the December 2018 reporting period. <sup>1</sup>Non-Federal Workers Data calculated from the US Bureau of Labor Statistics 2018 Annual Averages [www.bls.gov/news.release/pdf/vet.pdf](http://www.bls.gov/news.release/pdf/vet.pdf). <sup>2</sup>Employment categories consistent with the definitions given by the US Office of Personnel Management "Introduction to the Position Classification Standards" 2009. For a description of the employment categories, refer to [www.opm.gov/policy-data-oversight/classification-qualifications/classifying-general-schedule-positions/positionclassificationintro.pdf](http://www.opm.gov/policy-data-oversight/classification-qualifications/classifying-general-schedule-positions/positionclassificationintro.pdf).

# Who are the Civilian Federal Employees in Minnesota - 2017

**Federal Workers in Minnesota: 19,261**

*Percentage Who Are Veterans: 24.50%*

**Non-Federal Workers in Minnesota: 2,924,000<sup>1</sup>**

*Percentage Who Are Veterans: 6.13%<sup>2</sup>*

## Five Largest Federal Employers

VA: 7,660



DHS: 1,910



Agriculture: 1,679



Justice: 1,496



Army: 1,328



### Race and Ethnicity

White, non-Hispanic	16,425	85.3%
Black/African American, non-Hispanic	951	4.9%
Hispanic or Latino	501	2.6%
Asian, non-Hispanic	580	3.0%
Two or more races	250	1.3%
American Indian and Alaska Native	523	2.7%
Native Hawaiian and Other Pacific Islander	29	0.2%

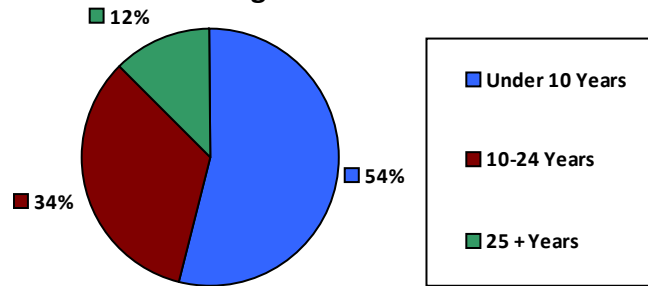
### Gender

M	10,157	52.8%
F	9,075	47.2%

### Age

<35	4,571	23.7%
35-54	10,085	52.4%
55+	4,605	23.9%

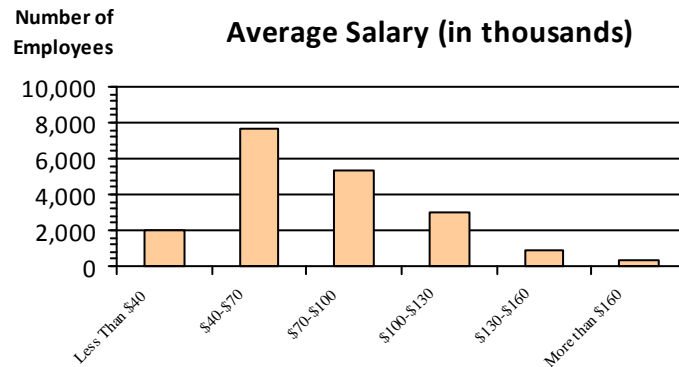
### Length of Service



### Educational Attainment

HS or Below	4,001	20.8%
Occupational Program	1,111	5.8%
Between HS and Bachelors	4,238	22.0%
Bachelors + Post Bachelors	7,120	37.0%
Masters and Post Grad	2,092	10.9%
Doctorate and Post Doc	656	3.4%

### Average Salary (in thousands)



### Type of Employment<sup>2</sup>

Administrative	6,346	32.9%
Professional	5,345	27.7%
Technical	3,999	20.8%
Clerical	1,302	6.8%
Other White Collar	610	3.2%
Blue Collar	1,659	8.6%

All data unless otherwise noted is provided by the US Office of Personnel Management for the December 2017 reporting period. Non-Federal Workers Data calculated from the US Bureau of Labor Statistics 2017 Annual Averages <https://www.bls.gov/news.release/vet.htm>.<sup>1</sup> Employment categories consistent with the definitions given by the US Office of Personnel Management "Introduction to the Position Classification Standards" (Revised: 2009), available at <https://www.opm.gov/policy-data-oversight/classification-qualifications/classifying-general-schedule-positions/positionclassificationintro.pdf>.<sup>2</sup>

## Who are the Civilian Federal Employees in

# Minnesota - 2016

**Federal Workers in Minnesota: 19,165**

*Percentage Who Are Veterans: 24.22%*

**Non-Federal Workers in Minnesota: 2,790,000**<sup>1</sup>

*Percentage Who Are Veterans: 5.59%*<sup>1</sup>

### Five Largest Federal Employers

VA: 7,398



DHS: 1,845



Agriculture: 1,790



Justice: 1,559



Army: 1,272



### Race and Ethnicity

White, non-Hispanic	16,428	85.7%
Black/African American, non-Hispanic	925	4.8%
Hispanic or Latino	478	2.5%
Asian, non-Hispanic	539	2.8%
Two or more races	234	1.2%
American Indian and Alaska Native	529	2.8%
Native Hawaiian and Other Pacific Islander	31	0.2%

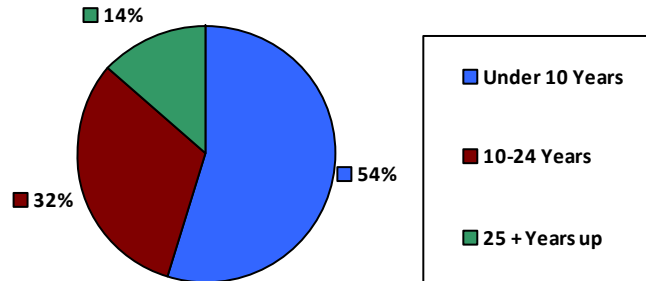
### Gender

M	10,160	53.0%
F	8,997	47.0%

### Age

<35	4,708	24.6%
35-54	9,913	51.7%
55+	4,544	23.7%

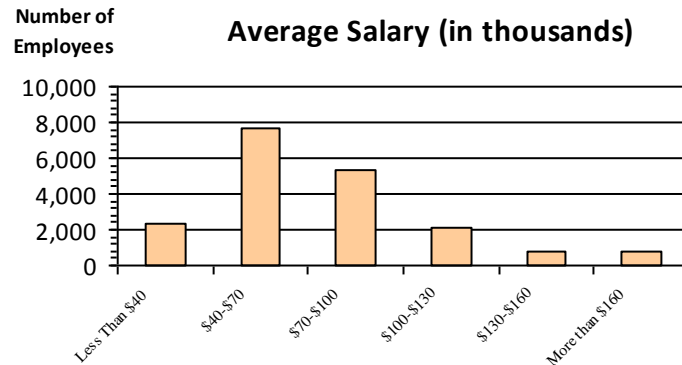
### Length of Service



### Educational Attainment

HS or Below	3,994	20.8%
Occupational Program	1,140	5.9%
Between HS and Bachelors	4,265	22.3%
Bachelors + Post Bachelors	7,101	37.0%
Masters and Post Grad	2,045	10.7%
Doctorate and Post Doc	592	3.1%

### Average Salary (in thousands)



### Type of Employment<sup>2</sup>

Administrative	6,207	32.4%
Professional	5,336	27.8%
Technical	4,096	21.4%
Clerical	1,253	6.5%
Other White Collar	624	3.3%
Blue Collar	1,649	8.6%

All data unless otherwise noted is provided by the US Office of Personnel Management for the December 2016 reporting period. <sup>1</sup>Non-Federal Workers Data calculated from the US Bureau of Labor Statistics 2015 Annual Averages [https://www.bls.gov/news.release/archives/vet\\_03222016.pdf](https://www.bls.gov/news.release/archives/vet_03222016.pdf). <sup>2</sup>Employment categories consistent with the definitions given by the US Office of Personnel Management "Introduction to the Position Classification Standards" 2009. For a description of the employment categories, refer to <http://www.opm.gov/policy-data-oversight/classification-qualifications/classifying-general-schedule-positions/positionclassificationintro.pdf>.

# Who are the Civilian Federal Employees in Minnesota - 2015

**Federal Workers in Minnesota: 18,721**

Percentage Who Are Veterans: 24.03%

**Non-Federal Workers in Minnesota: 2,844,000<sup>1</sup>**

Percentage Who Are Veterans: 6.54%<sup>1</sup>

## Five Largest Federal Employers

VA: 7,160



Agriculture: 1,781



DHS: 1,734



Justice: 1,536



Army: 1,291



### Race and Ethnicity

White, non-Hispanic	16,216	86.6%
Black/African American, non-Hispanic	826	4.4%
Hispanic or Latino	446	2.4%
Asian, non-Hispanic	490	2.6%
Two or more races	207	1.1%
American Indian and Alaska Native	512	2.7%
Native Hawaiian and Other Pacific Islander	23	0.1%

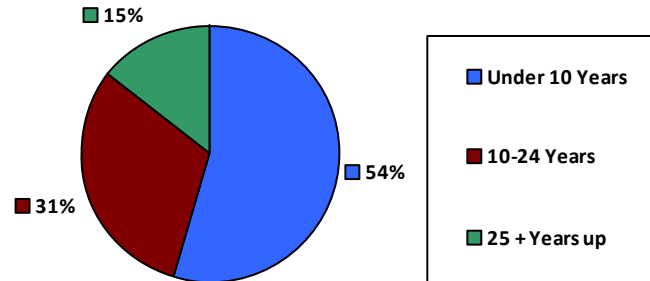
### Gender

M	9,914	53.0%
F	8,807	47.0%

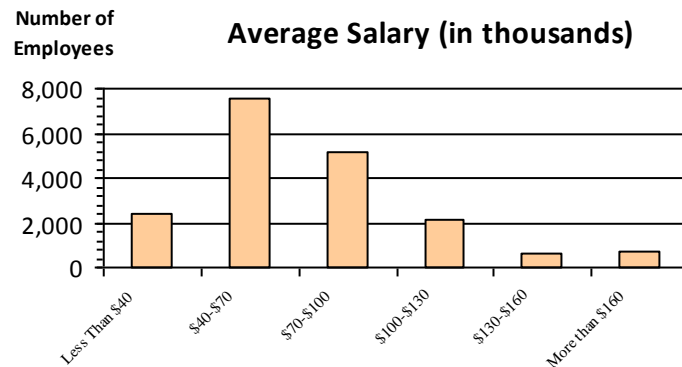
### Age

<35	4,653	24.9%
35-54	9,644	51.5%
55+	4,424	23.6%

### Length of Service



### Average Salary (in thousands)



### Educational Attainment

HS or Below	3,825	20.4%
Occupational Program	1,162	6.2%
Between HS and Bachelors	4,290	22.9%
Bachelors + Post Bachelors	6,963	37.2%
Masters and Post Grad	1,926	10.3%
Doctorate and Post Doc	539	2.9%

### Type of Employment<sup>2</sup>

Administrative	5,935	31.7%
Professional	5,191	27.7%
Technical	4,187	22.4%
Clerical	1,159	6.2%
Other White Collar	628	3.4%
Blue Collar	1,621	8.7%

All data unless otherwise noted is provided by the US Office of Personnel Management for the December 2015 reporting period. <sup>1</sup>Non-Federal Workers Data calculated from the US Bureau of Labor Statistics 2015 Annual Averages [https://www.bls.gov/news.release/archives/vet\\_03222016.pdf](https://www.bls.gov/news.release/archives/vet_03222016.pdf). <sup>2</sup>Employment categories consistent with the definitions given by the US Office of Personnel Management "Introduction to the Position Classification Standards" 2009. For a description of the employment categories, refer to <http://www.opm.gov/policy-data-oversight/classification-qualifications/classifying-general-schedule-positions/positionclassificationintro.pdf>.

## Who are the Civilian Federal Employees in

# Minnesota - 2014

**Federal Workers in Minnesota: 18,468**

*Percentage Who Are Veterans: 23.56%*

**Non-Federal Workers in Minnesota: 2,799,000**<sup>1</sup>

*Percentage Who Are Veterans: 6.00%*<sup>1</sup>

### Five Largest Federal Employers

VA: 6,946



Agriculture: 1,757



DHS: 1,752



Justice: 1,549



Army: 1,309



### Race and Ethnicity

White, non-Hispanic	16,077	87.0%
Black/African American, non-Hispanic	806	4.4%
Hispanic or Latino	400	2.2%
Asian, non-Hispanic	467	2.5%
Two or more races	173	0.9%
American Indian and Alaska Native	524	2.8%
Native Hawaiian and Other Pacific Islander	20	0.1%

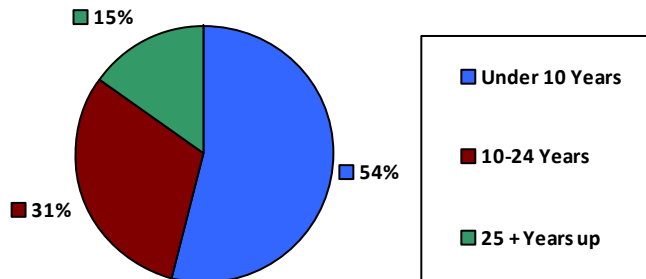
### Gender

M	9,780	53.0%
F	8,688	47.0%

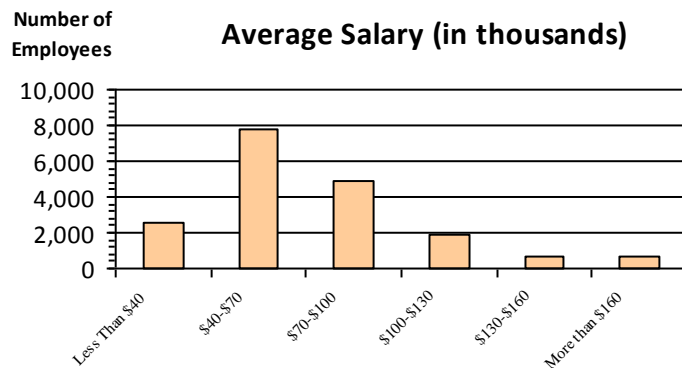
### Age

<35	4,620	25.0%
35-54	9,486	51.4%
55+	4,362	23.6%

### Length of Service



### Average Salary (in thousands)



### Educational Attainment

HS or Below	3,879	21.0%
Occupational Program	1,176	6.4%
Between HS and Bachelors	4,271	23.1%
Bachelors + Post Bachelors	6,811	36.9%
Masters and Post Grad	1,797	9.7%
Doctorate and Post Doc	511	2.8%

### Type of Employment<sup>2</sup>

Administrative	5,783	31.3%
Professional	5,058	27.4%
Technical	4,216	22.8%
Clerical	1,121	6.1%
Other White Collar	683	3.7%
Blue Collar	1,607	8.7%

All data unless otherwise noted is provided by the US Office of Personnel Management for the December 2014 reporting period. <sup>1</sup>Non-Federal Workers Data calculated from the US Bureau of Labor Statistics 2014 Annual Averages [https://www.bls.gov/news.release/archives/vet\\_03182015.pdf](https://www.bls.gov/news.release/archives/vet_03182015.pdf). <sup>2</sup>Employment categories consistent with the definitions given by the US Office of Personnel Management "Introduction to the Position Classification Standards" 2009. For a description of the employment categories, refer to <http://www.opm.gov/policy-data-oversight/classification-qualifications/classifying-general-schedule-positions/positionclassificationintro.pdf>.



# Who are the Civilian Federal Employees in Minnesota - 2013

**Federal Workers in Minnesota: 18,511**  
*Percentage Who Are Veterans: 23.64%*

**Non-Federal Workers in Minnesota: 2,761,000**<sup>1</sup>  
*Percentage Who Are Veterans: 6.66%*<sup>1</sup>

## Five Largest Federal Employers

VA: 6,762



DHS: 1,835



Agriculture: 1,790



Justice: 1,527



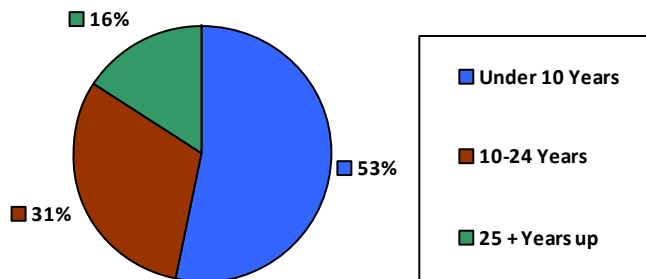
Army: 1,285



### Race and Ethnicity

White, non-Hispanic	16,247	87.8%
Black/African American, non-Hispanic	742	4.0%
Hispanic or Latino	394	2.1%
Asian, non-Hispanic	451	2.4%
Two or more races	146	0.8%
American Indian and Alaska Native	516	2.8%
Native Hawaiian and Other Pacific Islander	14	0.1%

### Length of Service



### Educational Attainment

HS or Below	3,942	21.3%
Occupational Program	1,246	6.7%
Between HS and Bachelors	4,324	23.4%
Bachelors + Post Bachelors	6,745	36.4%
Masters and Post Grad	1,750	9.4%
Doctorate and Post Doc	489	2.6%

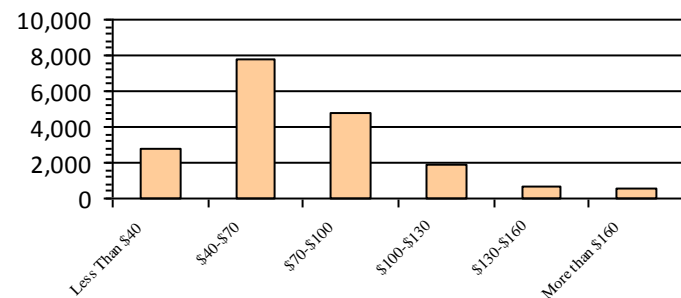
### Gender

M	9,830	53.1%
F	8,681	46.9%

### Age

<35	4,555	24.6%
35-54	9,532	51.5%
55+	4,424	23.9%

### Average Salary (in thousands)



### Type of Employment<sup>2</sup>

Administrative	5,779	31.2%
Professional	4,956	26.8%
Technical	4,059	21.9%
Clerical	1,401	7.6%
Other White Collar	689	3.7%
Blue Collar	1,627	8.8%

All data unless otherwise noted is provided by the US Office of Personnel Management for the December 2013 reporting period. <sup>1</sup>Non-Federal Workers Data calculated from the US Bureau of Labor Statistics 2013 Annual Averages [https://www.bls.gov/news.release/archives/vet\\_03202014.pdf](https://www.bls.gov/news.release/archives/vet_03202014.pdf). <sup>2</sup>Employment categories consistent with the definitions given by the US Office of Personnel Management "Introduction to the Position Classification Standards" 2009. For a description of the employment categories, refer to <http://www.opm.gov/policy-data-oversight/classification-qualifications/classifying-general-schedule-positions/positionclassificationintro.pdf>.