

## Who are the Civilian Federal Employees in

# Maryland - 2021

**Federal Workers in Maryland: 142,121**

Percentage Who Are Veterans: 18.06%

**Non-Federal Workers in Maryland: 2,936,000**<sup>1</sup>

Percentage Who Are Veterans: 8.04%<sup>1</sup>

### Five Largest Federal Employers

HHS: 41,733



Navy: 18,195



Army: 16,817



Commerce: 12,065



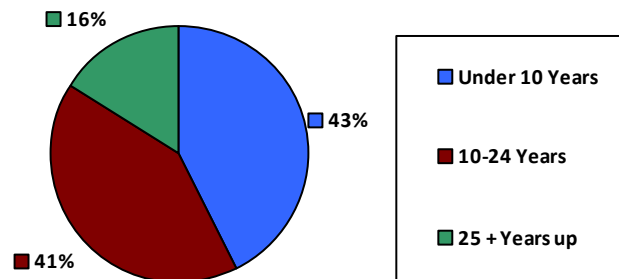
SSA: 10,230



### Race and Ethnicity

White, non-Hispanic	79,828	56.2%
Black/African American, non-Hispanic	36,604	25.8%
Hispanic or Latino	6,191	4.4%
Asian, non-Hispanic	15,792	11.1%
Two or more races	2,450	1.7%
American Indian and Alaska Native	764	0.5%
Native Hawaiian and Other Pacific Islander	242	0.2%

### Length of Service



### Educational Attainment

HS or Below	24,947	17.6%
Occupational Program	1,565	1.1%
Between HS and Bachelors	17,082	12.0%
Bachelors + Post Bachelors	47,863	33.7%
Masters and Post Grad	31,462	22.1%
Doctorate and Post Doc	19,095	13.4%

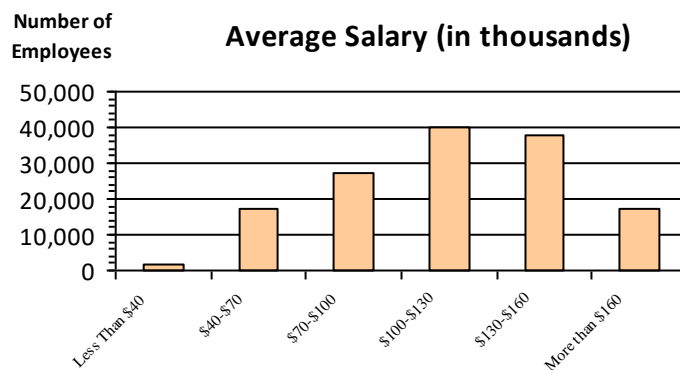
### Gender

M	70,699	49.7%
F	71,418	50.2%

### Age

<35	20,890	14.7%
35-54	75,115	52.8%
55+	46,116	32.4%

### Average Salary (in thousands)



### Type of Employment<sup>2</sup>

Administrative	56,638	39.8%
Professional	10,722	7.5%
Technical	2,344	1.6%
Clerical	2,611	1.8%
Other White Collar	3,690	2.6%
Blue Collar	3,620	2.5%

All data unless otherwise noted is provided by the US Office of Personnel Management for the December 2015 reporting period. <sup>1</sup>Non-Federal Workers Data calculated from the US Bureau of Labor Statistics 2015 Annual Averages [https://www.bls.gov/news.release/archives/vet\\_03222016.pdf](https://www.bls.gov/news.release/archives/vet_03222016.pdf). <sup>2</sup>Employment categories consistent with the definitions given by the US Office of Personnel Management "Introduction to the Position Classification Standards" 2009. For a description of the employment categories, refer to <http://www.opm.gov/policy-data-oversight/classification-qualifications/classifying-general-schedule-positions/positionclassificationintro.pdf>.

## Who are the Civilian Federal Employees in

# Maryland - 2020

**Federal Workers in Maryland: 137,580**

Percentage Who Are Veterans: 18.83%

**Non-Federal Workers in Maryland: 2,938,000**<sup>1</sup>

Percentage Who Are Veterans: 7.45%<sup>1</sup>

### Five Largest Federal Employers

HHS: 37,239



Navy: 18,292



Army: 16,790



Commerce: 12,157



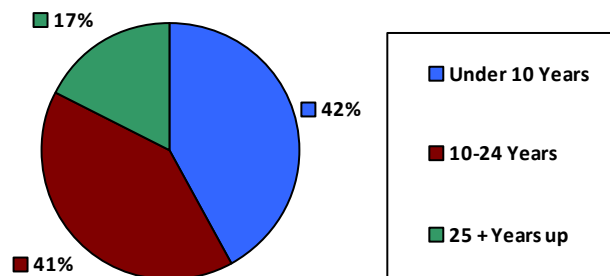
SSA: 10,443



### Race and Ethnicity

White, non-Hispanic	78,415	57.0%
Black/African American, non-Hispanic	35,583	25.9%
Hispanic or Latino	5,936	4.3%
Asian, non-Hispanic	14,159	10.3%
Two or more races	2,298	1.7%
American Indian and Alaska Native	756	0.5%
Native Hawaiian and Other Pacific Islander	222	0.2%

### Length of Service



### Educational Attainment

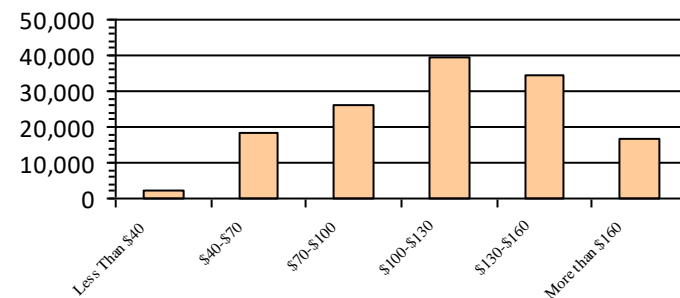
HS or Below	24,545	17.8%
Occupational Program	1,605	1.2%
Between HS and Bachelors	17,246	12.5%
Bachelors + Post Bachelors	46,592	33.9%
Masters and Post Grad	30,422	22.1%
Doctorate and Post Doc	16,926	12.3%

### Gender

### Age

M	69,251	50.3%	<35	21,019	15.3%
			35-54	71,908	52.3%
F	68,318	49.7%	55+	44,653	32.5%

### Average Salary (in thousands)



### Type of Employment<sup>2</sup>

Administrative	64,821	47.1%
Professional	53,066	38.6%
Technical	10,874	7.9%
Clerical	2,454	1.8%
Other White Collar	2,722	2.0%
Blue Collar	3,620	2.6%

All data unless otherwise noted is provided by the US Office of Personnel Management for the December 2015 reporting period. <sup>1</sup>Non-Federal Workers Data calculated from the US Bureau of Labor Statistics 2015 Annual Averages [https://www.bls.gov/news.release/archives/vet\\_03222016.pdf](https://www.bls.gov/news.release/archives/vet_03222016.pdf). <sup>2</sup>Employment categories consistent with the definitions given by the US Office of Personnel Management "Introduction to the Position Classification Standards" 2009. For a description of the employment categories, refer to <http://www.opm.gov/policy-data-oversight/classification-qualifications/classifying-general-schedule-positions/positionclassificationintro.pdf>.

## Who are the Civilian Federal Employees in

# Maryland - 2019

**Federal Workers in Maryland: 135,222**

Percentage Who Are Veterans: 18.62%

**Non-Federal Workers in Maryland: 3,169,000<sup>1</sup>**

Percentage Who Are Veterans: 7.86%<sup>1</sup>

### Five Largest Federal Employers

HHS: 38,900



Navy: 17,722



Army: 16,670



Commerce: 11,912



SSA: 10,523



### Race and Ethnicity

White, non-Hispanic	77,376	57.2%
Black/African American, non-Hispanic	34,058	25.2%
Hispanic or Latino	5,586	4.1%
Asian, non-Hispanic	14,170	10.5%
Two or more races	2,102	1.6%
American Indian and Alaska Native	727	0.5%
Native Hawaiian and Other Pacific Islander	206	0.2%

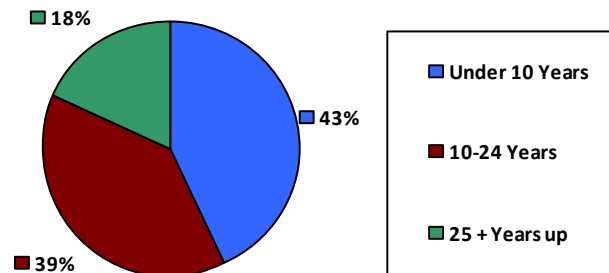
### Gender

M	68,520	50.7%
F	66,679	49.3%

### Age

<35	20,457	15.1%
35-54	70,786	52.3%
55+	43,979	32.5%

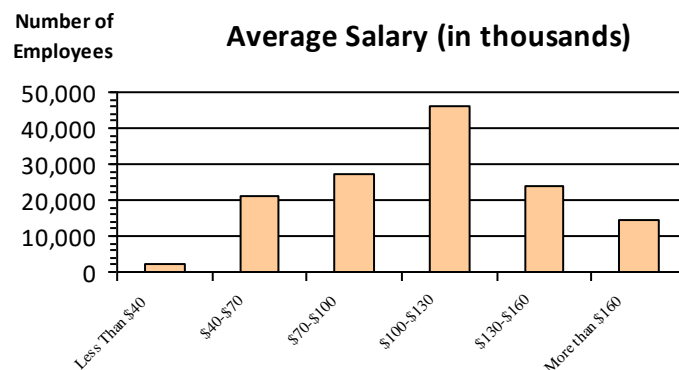
### Length of Service



### Educational Attainment

HS or Below	23,574	17.4%
Occupational Program	1,936	1.4%
Between HS and Bachelors	17,203	12.7%
Bachelors + Post Bachelors	45,588	33.7%
Masters and Post Grad	28,952	21.4%
Doctorate and Post Doc	17,879	13.2%

### Average Salary (in thousands)



### Type of Employment<sup>2</sup>

Administrative	60,701	44.9%
Professional	54,457	40.3%
Technical	10,790	8.0%
Clerical	2,660	2.0%
Other White Collar	2,669	2.0%
Blue Collar	3,923	2.9%

All data unless otherwise noted is provided by the US Office of Personnel Management for the December 2015 reporting period. <sup>1</sup>Non-Federal Workers Data calculated from the US Bureau of Labor Statistics 2015 Annual Averages [https://www.bls.gov/news.release/archives/vet\\_03222016.pdf](https://www.bls.gov/news.release/archives/vet_03222016.pdf). <sup>2</sup>Employment categories consistent with the definitions given by the US Office of Personnel Management "Introduction to the Position Classification Standards" 2009. For a description of the employment categories, refer to <http://www.opm.gov/policy-data-oversight/classification-qualifications/classifying-general-schedule-positions/positionclassificationintro.pdf>.

## Who are the Civilian Federal Employees in

# Maryland - 2018

**Federal Workers in Maryland: 135,373**

Percentage Who Are Veterans: 18.70%

**Non-Federal Workers in Maryland: 3,064,000**<sup>1</sup>

Percentage Who Are Veterans: 8.19%<sup>1</sup>

### Five Largest Federal Employers

HHS: 39,471



Navy: 17,358



Army: 16,620



Commerce: 11,867



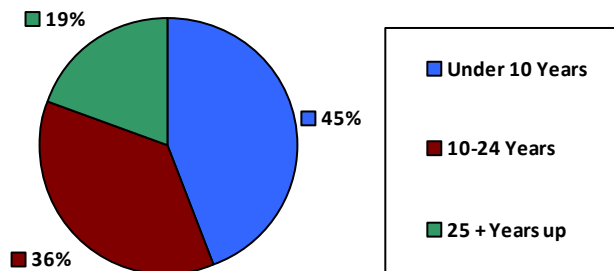
SSA: 10,756



### Race and Ethnicity

White, non-Hispanic	77,924	57.6%
Black/African American, non-Hispanic	34,030	25.1%
Hispanic or Latino	5,557	4.1%
Asian, non-Hispanic	13,873	10.2%
Two or more races	1,979	1.5%
American Indian and Alaska Native	737	0.5%
Native Hawaiian and Other Pacific Islander	203	0.1%

### Length of Service



### Educational Attainment

HS or Below	22,943	16.9%
Occupational Program	1,991	1.5%
Between HS and Bachelors	17,905	13.2%
Bachelors + Post Bachelors	45,760	33.8%
Masters and Post Grad	28,791	21.2%
Doctorate and Post Doc	17,899	13.2%

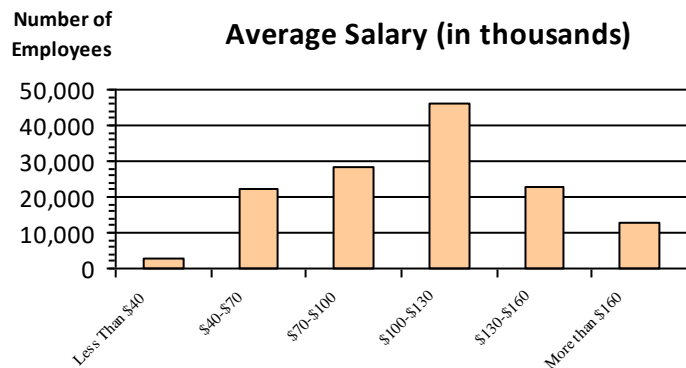
### Gender

M	68,860	50.9%
F	66,505	49.1%

### Age

<35	20,862	15.4%
35-54	70,764	52.3%
55+	43,747	32.3%

### Average Salary (in thousands)



### Type of Employment<sup>2</sup>

Administrative	60,571	44.7%
Professional	54,650	40.4%
Technical	10,981	8.1%
Clerical	2,703	2.0%
Other White Collar	2,553	1.9%
Blue Collar	3,892	2.9%

All data unless otherwise noted is provided by the US Office of Personnel Management for the December 2018 reporting period. <sup>1</sup>Non-Federal Workers Data calculated from the US Bureau of Labor Statistics 2018 Annual Averages [www.bls.gov/news.release/pdf/vet.pdf](http://www.bls.gov/news.release/pdf/vet.pdf). <sup>2</sup>Employment categories consistent with the definitions given by the US Office of Personnel Management "Introduction to the Position Classification Standards" 2009. For a description of the employment categories, refer to [www.opm.gov/policy-data-oversight/classification-qualifications/classifying-general-schedule-positions/positionclassificationintro.pdf](http://www.opm.gov/policy-data-oversight/classification-qualifications/classifying-general-schedule-positions/positionclassificationintro.pdf).

## Who are the Civilian Federal Employees in

# Maryland - 2017

**Federal Workers in Maryland: 135,972**

*Percentage Who Are Veterans: 18.61%*

**Non-Federal Workers in Maryland: 3,059,000<sup>1</sup>**

*Percentage Who Are Veterans: 9.29%<sup>2</sup>*

### Five Largest Federal Employers

HHS: 40,321



Navy: 16,572



Army: 16,457



Commerce: 12,031



SSA: 10,910



### Race and Ethnicity

White, non-Hispanic	79,582	58.5%
Black/African American, non-Hispanic	34,394	25.3%
Hispanic or Latino	5,457	4.0%
Asian, non-Hispanic	13,687	10.1%
Two or more races	1,873	1.4%
American Indian and Alaska Native	745	0.5%
Native Hawaiian and Other Pacific Islander	205	0.2%

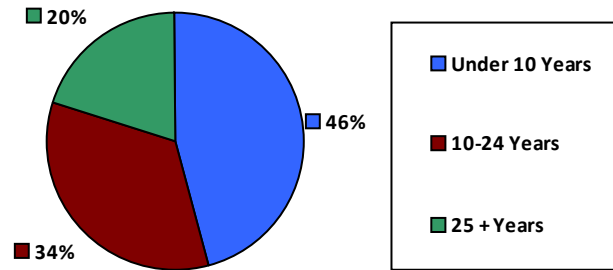
### Gender

M	68,997	50.7%
F	66,972	49.3%

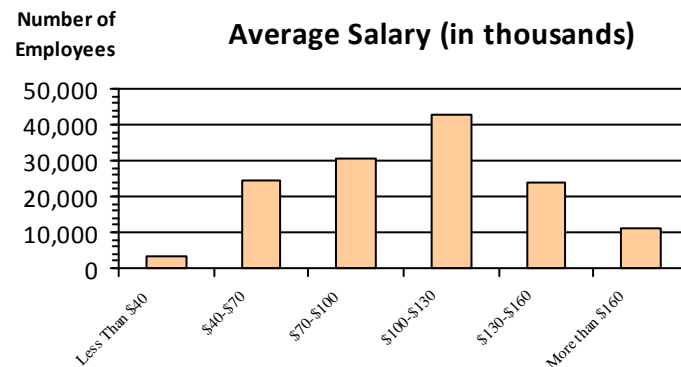
### Age

<35	21,347	15.7%
35-54	71,306	52.4%
55+	43,319	31.9%

### Length of Service



### Average Salary (in thousands)



### Educational Attainment

HS or Below	23,367	17.2%
Occupational Program	2,066	1.5%
Between HS and Bachelors	18,379	13.5%
Bachelors + Post Bachelors	45,545	33.5%
Masters and Post Grad	28,517	21.0%
Doctorate and Post Doc	18,033	13.3%

### Type of Employment<sup>2</sup>

Administrative	60,619	44.6%
Professional	54,590	40.1%
Technical	11,209	8.2%
Clerical	3,014	2.2%
Other White Collar	2,564	1.9%
Blue Collar	3,972	2.9%

All data unless otherwise noted is provided by the US Office of Personnel Management for the December 2017 reporting period. Non-Federal Workers Data calculated from the US Bureau of Labor Statistics 2017 Annual Averages <https://www.bls.gov/news.release/vet.htm>.<sup>1</sup> Employment categories consistent with the definitions given by the US Office of Personnel Management "Introduction to the Position Classification Standards" (Revised: 2009), available at <https://www.opm.gov/policy-data-oversight/classification-qualifications/classifying-general-schedule-positions/positionclassificationintro.pdf>.<sup>2</sup>

## Who are the Civilian Federal Employees in

# Maryland - 2016

**Federal Workers in Maryland: 136,644**

*Percentage Who Are Veterans: 18.67%*

**Non-Federal Workers in Maryland: 3,035,000**<sup>1</sup>

*Percentage Who Are Veterans: 8.86%*<sup>1</sup>

### Five Largest Federal Employers

HHS: 40,868



Army: 16,493



Navy: 16,433



Commerce: 12,073



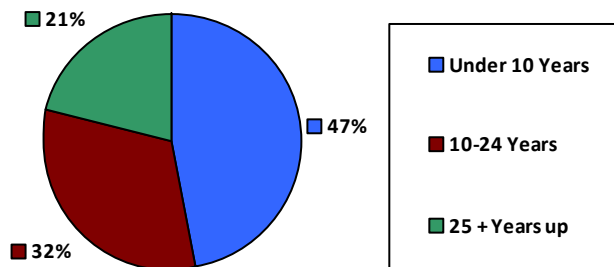
SSA: 11,221



### Race and Ethnicity

White, non-Hispanic	81,080	59.3%
Black/African American, non-Hispanic	34,228	25.0%
Hispanic or Latino	5,180	3.8%
Asian, non-Hispanic	13,484	9.9%
Two or more races	1,683	1.2%
American Indian and Alaska Native	777	0.6%
Native Hawaiian and Other Pacific Islander	194	0.1%

### Length of Service



### Educational Attainment

HS or Below	23,431	17.1%
Occupational Program	2,128	1.6%
Between HS and Bachelors	18,823	13.8%
Bachelors + Post Bachelors	45,947	33.6%
Masters and Post Grad	28,335	20.7%
Doctorate and Post Doc	17,905	13.1%

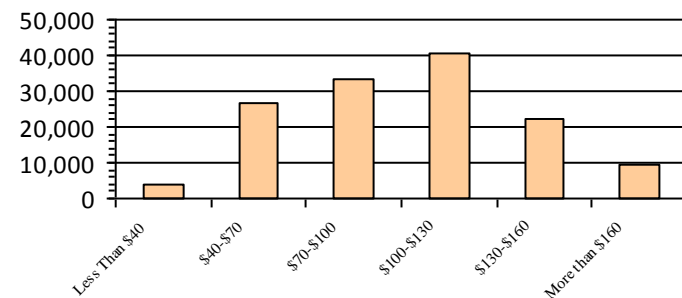
### Gender

M	69,409	50.8%
F	67,232	49.2%

### Age

<35	22,329	16.3%
35-54	71,781	52.5%
55+	42,534	31.1%

### Average Salary (in thousands)



### Type of Employment<sup>2</sup>

Administrative	60,262	44.1%
Professional	54,809	40.1%
Technical	11,673	8.5%
Clerical	3,239	2.4%
Other White Collar	2,716	2.0%
Blue Collar	3,936	2.9%

All data unless otherwise noted is provided by the US Office of Personnel Management for the December 2016 reporting period. <sup>1</sup>Non-Federal Workers Data calculated from the US Bureau of Labor Statistics 2015 Annual Averages [https://www.bls.gov/news.release/archives/vet\\_03222016.pdf](https://www.bls.gov/news.release/archives/vet_03222016.pdf). <sup>2</sup>Employment categories consistent with the definitions given by the US Office of Personnel Management "Introduction to the Position Classification Standards" 2009. For a description of the employment categories, refer to <http://www.opm.gov/policy-data-oversight/classification-qualifications/classifying-general-schedule-positions/positionclassificationintro.pdf>.

## Who are the Civilian Federal Employees in

# Maryland - 2015

**Federal Workers in Maryland: 135,485**

Percentage Who Are Veterans: 18.66%

**Non-Federal Workers in Maryland: 2,994,000**<sup>1</sup>

Percentage Who Are Veterans: 7.78%<sup>1</sup>

### Five Largest Federal Employers

HHS: 40,021



Army: 16,657



Navy: 16,419



SSA: 11,558



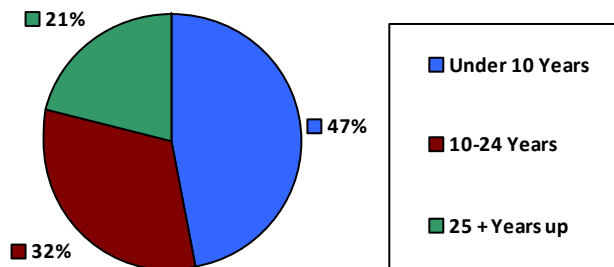
Commerce: 11,172



### Race and Ethnicity

White, non-Hispanic	81,565	60.2%
Black/African American, non-Hispanic	33,628	24.8%
Hispanic or Latino	4,920	3.6%
Asian, non-Hispanic	12,874	9.5%
Two or more races	1,553	1.1%
American Indian and Alaska Native	769	0.6%
Native Hawaiian and Other Pacific Islander	176	0.1%

### Length of Service



### Educational Attainment

HS or Below	24,016	17.7%
Occupational Program	2,154	1.6%
Between HS and Bachelors	18,828	13.9%
Bachelors + Post Bachelors	45,676	33.7%
Masters and Post Grad	27,512	20.3%
Doctorate and Post Doc	17,229	12.7%

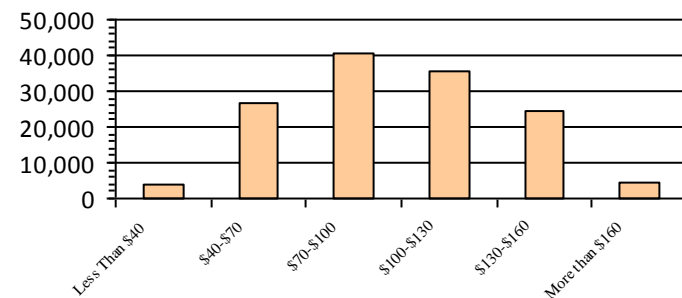
### Gender

M	68,953	50.9%
F	66,532	49.1%

### Age

<35	22,561	16.7%
35-54	71,394	52.7%
55+	41,530	30.6%

### Average Salary (in thousands)



### Type of Employment<sup>2</sup>

Administrative	59,513	43.9%
Professional	53,795	39.7%
Technical	11,908	8.8%
Clerical	3,418	2.5%
Other White Collar	2,684	2.0%
Blue Collar	4,157	3.1%

All data unless otherwise noted is provided by the US Office of Personnel Management for the December 2015 reporting period. <sup>1</sup>Non-Federal Workers Data calculated from the US Bureau of Labor Statistics 2015 Annual Averages [https://www.bls.gov/news.release/archives/vet\\_03222016.pdf](https://www.bls.gov/news.release/archives/vet_03222016.pdf). <sup>2</sup>Employment categories consistent with the definitions given by the US Office of Personnel Management "Introduction to the Position Classification Standards" 2009. For a description of the employment categories, refer to <http://www.opm.gov/policy-data-oversight/classification-qualifications/classifying-general-schedule-positions/positionclassificationintro.pdf>.

## Who are the Civilian Federal Employees in

# Maryland - 2014

**Federal Workers in Maryland: 134,216**

Percentage Who Are Veterans: 18.40%

**Non-Federal Workers in Maryland: 2,896,000**<sup>1</sup>

Percentage Who Are Veterans: 7.01%<sup>1</sup>

### Five Largest Federal Employers

HHS: 39,149



Army: 17,025



Navy: 15,739



SSA: 11,537



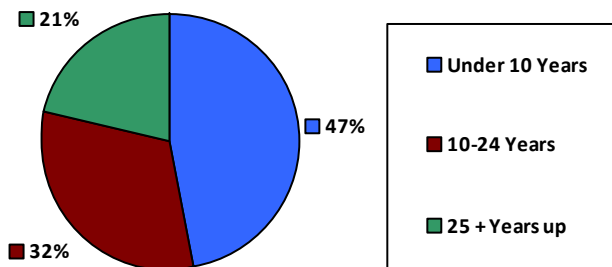
Commerce: 11,020



### Race and Ethnicity

White, non-Hispanic	81,792	60.9%
Black/African American, non-Hispanic	33,018	24.6%
Hispanic or Latino	4,739	3.5%
Asian, non-Hispanic	12,318	9.2%
Two or more races	1,400	1.0%
American Indian and Alaska Native	782	0.6%
Native Hawaiian and Other Pacific Islander	167	0.1%

### Length of Service



### Educational Attainment

HS or Below	24,862	18.5%
Occupational Program	2,165	1.6%
Between HS and Bachelors	18,935	14.1%
Bachelors + Post Bachelors	45,379	33.8%
Masters and Post Grad	26,206	19.5%
Doctorate and Post Doc	16,571	12.3%

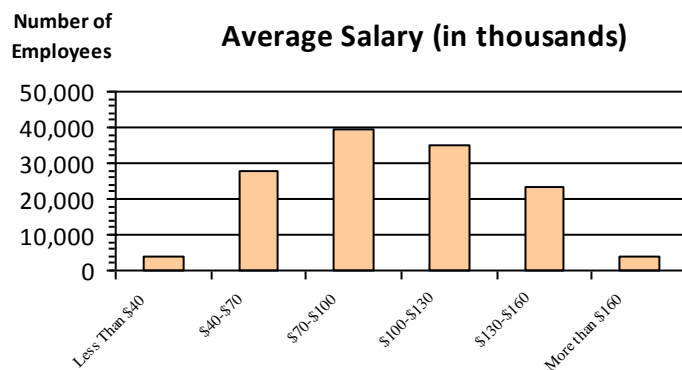
### Gender

M	68,227	50.8%
F	65,986	49.2%

### Age

<35	22,816	17.0%
35-54	70,826	52.8%
55+	40,574	30.2%

### Average Salary (in thousands)



### Type of Employment<sup>2</sup>

Administrative	58,973	43.9%
Professional	52,832	39.4%
Technical	12,250	9.1%
Clerical	3,378	2.5%
Other White Collar	2,578	1.9%
Blue Collar	4,196	3.1%

All data unless otherwise noted is provided by the US Office of Personnel Management for the December 2014 reporting period. <sup>1</sup>Non-Federal Workers Data calculated from the US Bureau of Labor Statistics 2014 Annual Averages [https://www.bls.gov/news.release/archives/vet\\_03182015.pdf](https://www.bls.gov/news.release/archives/vet_03182015.pdf). <sup>2</sup>Employment categories consistent with the definitions given by the US Office of Personnel Management "Introduction to the Position Classification Standards" 2009. For a description of the employment categories, refer to <http://www.opm.gov/policy-data-oversight/classification-qualifications/classifying-general-schedule-positions/positionclassificationintro.pdf>.



## Who are the Civilian Federal Employees in

# Maryland - 2013

**Federal Workers in Maryland: 134,916**

Percentage Who Are Veterans: 18.11%

**Non-Federal Workers in Maryland: 2,902,000**<sup>1</sup>

Percentage Who Are Veterans: 7.89%<sup>1</sup>

### Five Largest Federal Employers

HHS: 38,905



Army: 17,623



Navy: 15,549



Commerce: 11,221



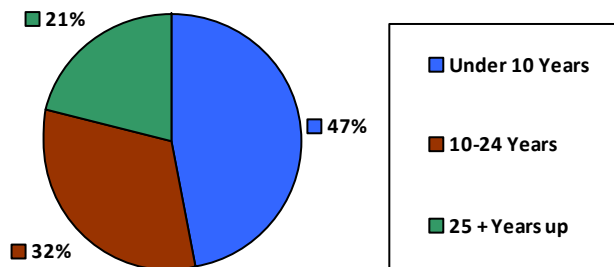
SSA: 11,004



### Race and Ethnicity

White, non-Hispanic	83,285	61.7%
Black/African American, non-Hispanic	32,973	24.4%
Hispanic or Latino	4,638	3.4%
Asian, non-Hispanic	11,756	8.7%
Two or more races	1,331	1.0%
American Indian and Alaska Native	771	0.6%
Native Hawaiian and Other Pacific Islander	161	0.1%

### Length of Service



### Educational Attainment

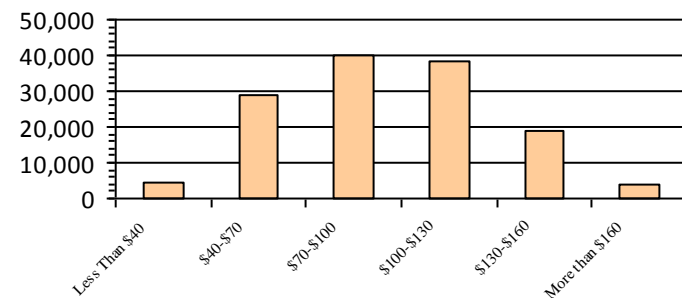
HS or Below	25,751	19.1%
Occupational Program	2,255	1.7%
Between HS and Bachelors	19,549	14.5%
Bachelors + Post Bachelors	45,428	33.7%
Masters and Post Grad	25,614	19.0%
Doctorate and Post Doc	16,235	12.0%

### Gender

### Age

M	68,404	50.7%	<35	23,306	17.3%
			35-54	71,097	52.7%
F	66,512	49.3%	55+	40,513	30.0%

### Average Salary (in thousands)



### Type of Employment<sup>2</sup>

Administrative	58,669	43.5%
Professional	52,586	39.0%
Technical	12,598	9.3%
Clerical	3,989	3.0%
Other White Collar	2,779	2.1%
Blue Collar	4,282	3.2%

All data unless otherwise noted is provided by the US Office of Personnel Management for the December 2013 reporting period. <sup>1</sup>Non-Federal Workers Data calculated from the US Bureau of Labor Statistics 2013 Annual Averages [https://www.bls.gov/news.release/archives/vet\\_03202014.pdf](https://www.bls.gov/news.release/archives/vet_03202014.pdf). <sup>2</sup>Employment categories consistent with the definitions given by the US Office of Personnel Management "Introduction to the Position Classification Standards" 2009. For a description of the employment categories, refer to <http://www.opm.gov/policy-data-oversight/classification-qualifications/classifying-general-schedule-positions/positionclassificationintro.pdf>.