

Who are the Civilian Federal Employees in

Maine - 2021

Federal Workers in Maine: 12,989

Percentage Who Are Veterans: 23.68%

Non-Federal Workers in Maine: 639,000¹

Percentage Who Are Veterans: 6.57%¹

Five Largest Federal Employers

Navy: 7,336



VA: 2,167



DHS: 989



Defense: 773



Army: 296



Race and Ethnicity

| | | |
|--------------------------------------------|--------|-------|
| White, non-Hispanic | 12,209 | 94.0% |
| Black/African American, non-Hispanic | 129 | 1.0% |
| Hispanic or Latino | 284 | 2.2% |
| Asian, non-Hispanic | 140 | 1.1% |
| Two or more races | 105 | 0.8% |
| American Indian and Alaska Native | 70 | 0.5% |
| Native Hawaiian and Other Pacific Islander | 14 | 0.1% |

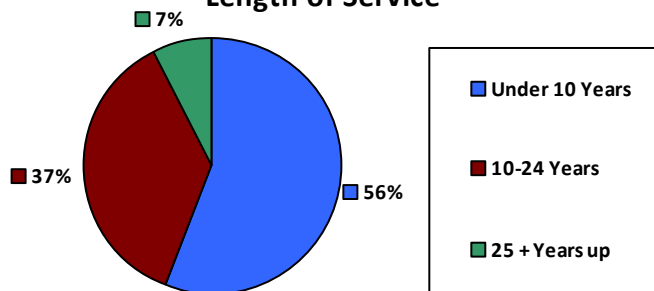
Gender

| | | |
|---|-------|-------|
| M | 9,248 | 71.2% |
| F | 3,741 | 28.8% |

Age

| | | |
|-------|-------|-------|
| <35 | 3,463 | 26.7% |
| 35-54 | 6,431 | 49.5% |
| 55+ | 3,095 | 23.8% |

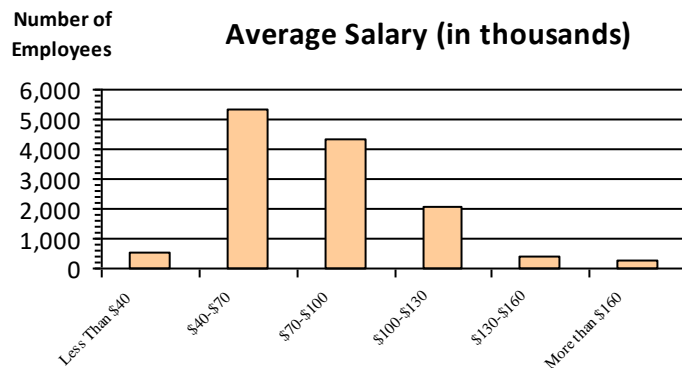
Length of Service



Educational Attainment

| | | |
|----------------------------|-------|-------|
| HS or Below | 5,765 | 44.4% |
| Occupational Program | 220 | 1.7% |
| Between HS and Bachelors | 2,276 | 17.5% |
| Bachelors + Post Bachelors | 3,557 | 27.4% |
| Masters and Post Grad | 1,004 | 7.7% |
| Doctorate and Post Doc | 160 | 1.2% |

Average Salary (in thousands)



Type of Employment²

| | | |
|--------------------|-------|-------|
| Administrative | 2,889 | 22.2% |
| Professional | 2,186 | 16.8% |
| Technical | 445 | 3.4% |
| Clerical | 371 | 2.9% |
| Other White Collar | 3,751 | 28.9% |
| Blue Collar | 3,781 | 29.1% |

All data unless otherwise noted is provided by the US Office of Personnel Management for the December 2015 reporting period. ¹Non-Federal Workers Data calculated from the US Bureau of Labor Statistics 2015 Annual Averages https://www.bls.gov/news.release/archives/vet_03222016.pdf. ²Employment categories consistent with the definitions given by the US Office of Personnel Management "Introduction to the Position Classification Standards" 2009. For a description of the employment categories, refer to <http://www.opm.gov/policy-data-oversight/classification-qualifications/classifying-general-schedule-positions/positionclassificationintro.pdf>.

Who are the Civilian Federal Employees in

Maine - 2020

Federal Workers in Maine: 12,993

Percentage Who Are Veterans: 24.58%

Non-Federal Workers in Maine: 632,000¹

Percentage Who Are Veterans: 7.12%¹

Five Largest Federal Employers

Navy: 7,478



VA: 1,976



DHS: 1,016



Defense: 763



Army: 296



Race and Ethnicity

| | | |
|--------------------------------------------|--------|-------|
| White, non-Hispanic | 12,213 | 94.0% |
| Black/African American, non-Hispanic | 129 | 1.0% |
| Hispanic or Latino | 299 | 2.3% |
| Asian, non-Hispanic | 124 | 1.0% |
| Two or more races | 107 | 0.8% |
| American Indian and Alaska Native | 69 | 0.5% |
| Native Hawaiian and Other Pacific Islander | 13 | 0.1% |

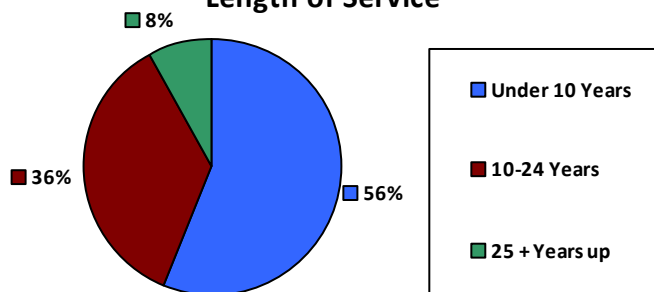
Gender

| | | |
|---|-------|-------|
| M | 9,408 | 72.4% |
| F | 3,585 | 27.6% |

Age

| | | |
|-------|-------|-------|
| <35 | 3,670 | 28.2% |
| 35-54 | 6,171 | 47.5% |
| 55+ | 3,152 | 24.3% |

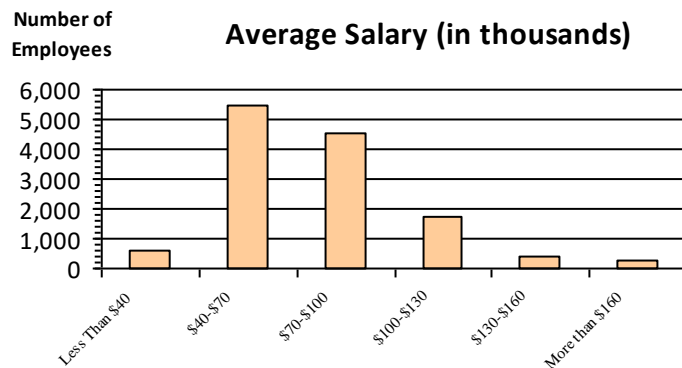
Length of Service



Educational Attainment

| | | |
|----------------------------|-------|-------|
| HS or Below | 5,812 | 44.7% |
| Occupational Program | 211 | 1.6% |
| Between HS and Bachelors | 2,295 | 17.7% |
| Bachelors + Post Bachelors | 3,563 | 27.4% |
| Masters and Post Grad | 966 | 7.4% |
| Doctorate and Post Doc | 137 | 1.1% |

Average Salary (in thousands)



Type of Employment²

| | | |
|--------------------|-------|-------|
| Administrative | 3,343 | 25.7% |
| Professional | 2,810 | 21.6% |
| Technical | 2,237 | 17.2% |
| Clerical | 414 | 3.2% |
| Other White Collar | 399 | 3.1% |
| Blue Collar | 3,781 | 29.1% |

All data unless otherwise noted is provided by the US Office of Personnel Management for the December 2015 reporting period. ¹Non-Federal Workers Data calculated from the US Bureau of Labor Statistics 2015 Annual Averages https://www.bls.gov/news.release/archives/vet_03222016.pdf. ²Employment categories consistent with the definitions given by the US Office of Personnel Management "Introduction to the Position Classification Standards" 2009. For a description of the employment categories, refer to <http://www.opm.gov/policy-data-oversight/classification-qualifications/classifying-general-schedule-positions/positionclassificationintro.pdf>.

Who are the Civilian Federal Employees in

Maine - 2019

Federal Workers in Maine: 12,779

Percentage Who Are Veterans: 25.26%

Non-Federal Workers in Maine: 655,000¹

Percentage Who Are Veterans: 7.48%¹

Five Largest Federal Employers

Navy: 7,284



VA: 1,905



DHS: 1,034



Defense: 781



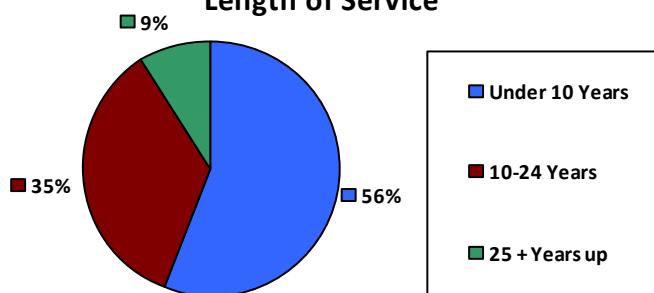
Army: 295



Race and Ethnicity

| | | |
|--------------------------------------------|--------|-------|
| White, non-Hispanic | 10,732 | 84.0% |
| Black/African American, non-Hispanic | 118 | 0.9% |
| Hispanic or Latino | 264 | 2.1% |
| Asian, non-Hispanic | 118 | 0.9% |
| Two or more races | 100 | 0.8% |
| American Indian and Alaska Native | 58 | 0.5% |
| Native Hawaiian and Other Pacific Islander | 10 | 0.1% |

Length of Service



Educational Attainment

| | | |
|----------------------------|-------|-------|
| HS or Below | 5,560 | 43.5% |
| Occupational Program | 277 | 2.2% |
| Between HS and Bachelors | 2,347 | 18.4% |
| Bachelors + Post Bachelors | 3,489 | 27.3% |
| Masters and Post Grad | 913 | 7.1% |
| Doctorate and Post Doc | 185 | 1.4% |

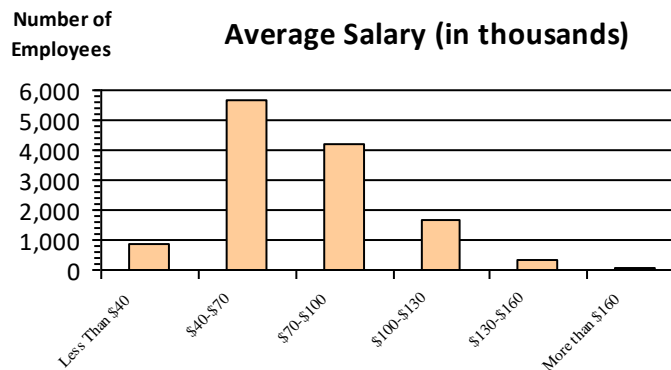
Gender

| | | |
|---|-------|-------|
| M | 9,261 | 72.5% |
| F | 3,518 | 27.5% |

Age

| | | |
|-------|-------|-------|
| <35 | 3,670 | 28.7% |
| 35-54 | 6,023 | 47.1% |
| 55+ | 3,086 | 24.1% |

Average Salary (in thousands)



Type of Employment²

| | | |
|--------------------|-------|-------|
| Administrative | 3,263 | 25.5% |
| Professional | 2,766 | 21.6% |
| Technical | 2,237 | 17.5% |
| Clerical | 433 | 3.4% |
| Other White Collar | 421 | 3.3% |
| Blue Collar | 3,648 | 28.5% |

All data unless otherwise noted is provided by the US Office of Personnel Management for the December 2015 reporting period. ¹Non-Federal Workers Data calculated from the US Bureau of Labor Statistics 2015 Annual Averages https://www.bls.gov/news.release/archives/vet_03222016.pdf. ²Employment categories consistent with the definitions given by the US Office of Personnel Management "Introduction to the Position Classification Standards" 2009. For a description of the employment categories, refer to <http://www.opm.gov/policy-data-oversight/classification-qualifications/classifying-general-schedule-positions/positionclassificationintro.pdf>.

Who are the Civilian Federal Employees in

Maine - 2018

Federal Workers in Maine: 12,532

Percentage Who Are Veterans: 25.44%

Non-Federal Workers in Maine: 662,000¹

Percentage Who Are Veterans: 7.85%¹

Five Largest Federal Employers

Navy: 6,954



VA: 1,962



DHS: 1,044



Defense: 769



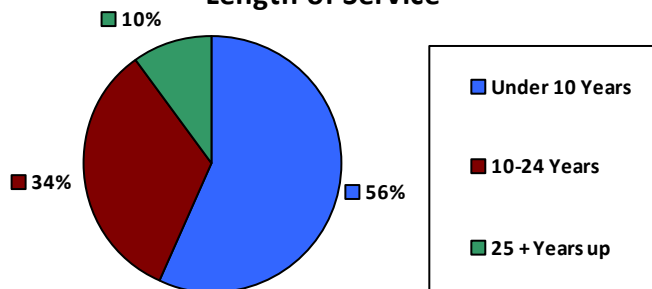
Air Force: 306



Race and Ethnicity

| | | |
|--------------------------------------------|--------|-------|
| White, non-Hispanic | 10,407 | 83.0% |
| Black/African American, non-Hispanic | 105 | 0.8% |
| Hispanic or Latino | 237 | 1.9% |
| Asian, non-Hispanic | 107 | 0.9% |
| Two or more races | 95 | 0.8% |
| American Indian and Alaska Native | 58 | 0.5% |
| Native Hawaiian and Other Pacific Islander | 9 | 0.1% |

Length of Service



Educational Attainment

| | | |
|----------------------------|-------|-------|
| HS or Below | 5,391 | 43.0% |
| Occupational Program | 282 | 2.3% |
| Between HS and Bachelors | 2,359 | 18.8% |
| Bachelors + Post Bachelors | 3,437 | 27.4% |
| Masters and Post Grad | 876 | 7.0% |
| Doctorate and Post Doc | 174 | 1.4% |

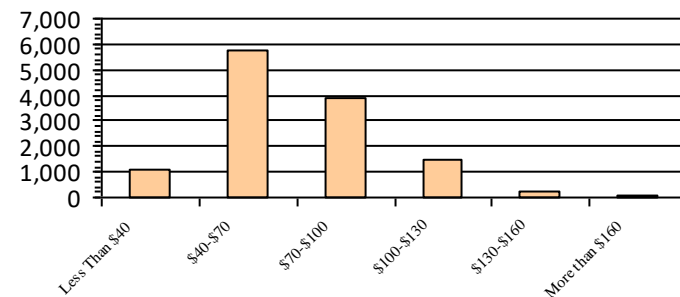
Gender

| | | |
|---|-------|-------|
| M | 9,044 | 72.2% |
| F | 3,488 | 27.8% |

Age

| | | |
|-------|-------|-------|
| <35 | 3,599 | 28.7% |
| 35-54 | 5,889 | 47.0% |
| 55+ | 3,044 | 24.3% |

Average Salary (in thousands)



Type of Employment²

| | | |
|--------------------|-------|-------|
| Administrative | 3,060 | 24.4% |
| Professional | 2,737 | 21.8% |
| Technical | 2,185 | 17.4% |
| Clerical | 444 | 3.5% |
| Other White Collar | 438 | 3.5% |
| Blue Collar | 3,660 | 29.2% |

All data unless otherwise noted is provided by the US Office of Personnel Management for the December 2018 reporting period. ¹Non-Federal Workers Data calculated from the US Bureau of Labor Statistics 2018 Annual Averages www.bls.gov/news.release/pdf/vet.pdf. ²Employment categories consistent with the definitions given by the US Office of Personnel Management "Introduction to the Position Classification Standards" 2009. For a description of the employment categories, refer to www.opm.gov/policy-data-oversight/classification-qualifications/classifying-general-schedule-positions/positionclassificationintro.pdf.

Who are the Civilian Federal Employees in

Maine - 2017

Federal Workers in Maine: 11,886

Percentage Who Are Veterans: 26.74%

Non-Federal Workers in Maine: 670,000¹

Percentage Who Are Veterans: 8.77%²

Five Largest Federal Employers

Navy: 6,419



VA: 1,885



DHS: 962



Defense: 784



Air Force: 296



Race and Ethnicity

| | | |
|--------------------------------------------|--------|-------|
| White, non-Hispanic | 11,346 | 95.4% |
| Black/African American, non-Hispanic | 111 | 0.9% |
| Hispanic or Latino | 177 | 1.5% |
| Asian, non-Hispanic | 105 | 0.9% |
| Two or more races | 67 | 0.6% |
| American Indian and Alaska Native | 69 | 0.6% |
| Native Hawaiian and Other Pacific Islander | 8 | 0.1% |

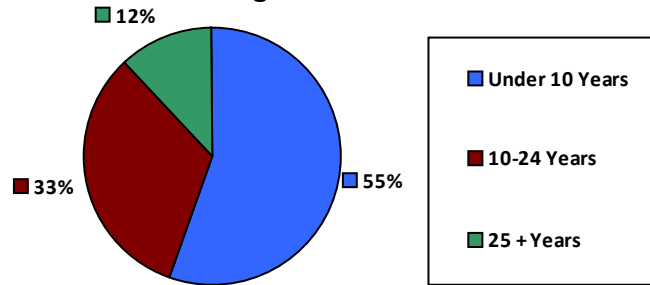
Gender

| | | |
|---|-------|-------|
| M | 8,551 | 71.9% |
| F | 3,334 | 28.0% |

Age

| | | |
|-------|-------|-------|
| <35 | 3,244 | 27.3% |
| 35-54 | 5,671 | 47.7% |
| 55+ | 2,971 | 25.0% |

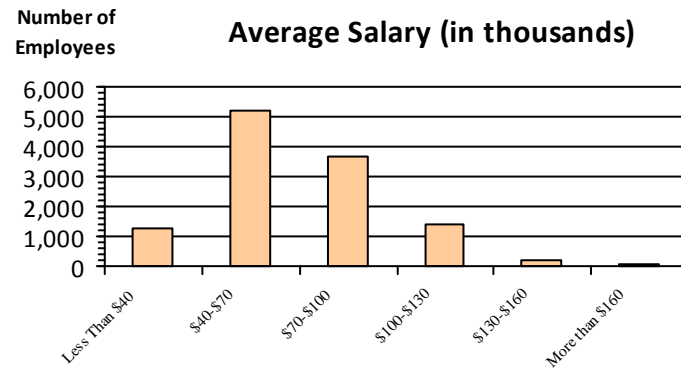
Length of Service



Educational Attainment

| | | |
|----------------------------|-------|-------|
| HS or Below | 4,939 | 41.5% |
| Occupational Program | 289 | 2.4% |
| Between HS and Bachelors | 2,326 | 19.6% |
| Bachelors + Post Bachelors | 3,340 | 28.1% |
| Masters and Post Grad | 820 | 6.9% |
| Doctorate and Post Doc | 165 | 1.4% |

Average Salary (in thousands)



Type of Employment²

| | | |
|--------------------|-------|-------|
| Administrative | 2,968 | 25.0% |
| Professional | 2,658 | 22.4% |
| Technical | 2,164 | 18.2% |
| Clerical | 417 | 3.5% |
| Other White Collar | 398 | 3.3% |
| Blue Collar | 3,280 | 27.6% |

All data unless otherwise noted is provided by the US Office of Personnel Management for the December 2017 reporting period. Non-Federal Workers Data calculated from the US Bureau of Labor Statistics 2017 Annual Averages <https://www.bls.gov/news.release/vet.htm>.¹ Employment categories consistent with the definitions given by the US Office of Personnel Management "Introduction to the Position Classification Standards" (Revised: 2009), available at <https://www.opm.gov/policy-data-oversight/classification-qualifications/classifying-general-schedule-positions/positionclassificationintro.pdf>.²

Who are the Civilian Federal Employees in

Maine - 2016

Federal Workers in Maine: 11,774

Percentage Who Are Veterans: 27.12%

Non-Federal Workers in Maine: 658,000¹

Percentage Who Are Veterans: 9.57%¹

Five Largest Federal Employers

Navy: 6,332



VA: 1,878



DHS: 938



Defense: 783



Air Force: 286



Race and Ethnicity

| | | |
|--------------------------------------------|--------|-------|
| White, non-Hispanic | 11,271 | 95.7% |
| Black/African American, non-Hispanic | 106 | 0.9% |
| Hispanic or Latino | 147 | 1.2% |
| Asian, non-Hispanic | 106 | 0.9% |
| Two or more races | 57 | 0.5% |
| American Indian and Alaska Native | 73 | 0.6% |
| Native Hawaiian and Other Pacific Islander | 9 | 0.1% |

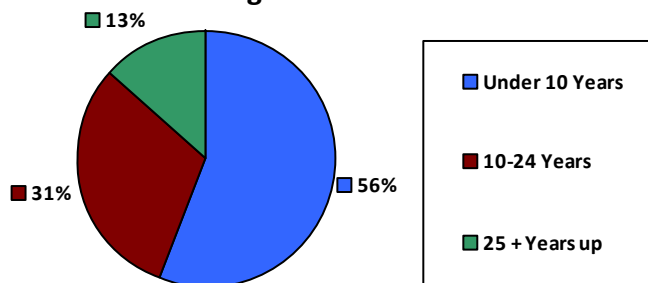
Gender

| | | |
|---|-------|-------|
| M | 8,471 | 71.9% |
| F | 3,303 | 28.1% |

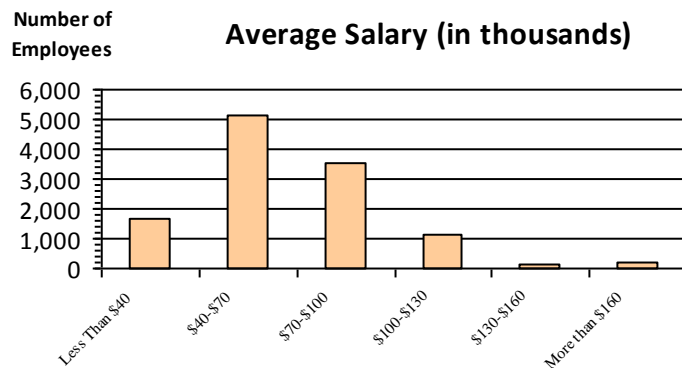
Age

| | | |
|-------|-------|-------|
| <35 | 3,193 | 27.1% |
| 35-54 | 5,624 | 47.8% |
| 55+ | 2,957 | 25.1% |

Length of Service



Average Salary (in thousands)



Educational Attainment

| | | |
|----------------------------|-------|-------|
| HS or Below | 4,882 | 41.5% |
| Occupational Program | 310 | 2.6% |
| Between HS and Bachelors | 2,325 | 19.7% |
| Bachelors + Post Bachelors | 3,305 | 28.1% |
| Masters and Post Grad | 794 | 6.7% |
| Doctorate and Post Doc | 152 | 1.3% |

Type of Employment²

| | | |
|--------------------|-------|-------|
| Administrative | 2,919 | 24.8% |
| Professional | 2,597 | 22.1% |
| Technical | 2,184 | 18.5% |
| Clerical | 400 | 3.4% |
| Other White Collar | 411 | 3.5% |
| Blue Collar | 3,263 | 27.7% |

All data unless otherwise noted is provided by the US Office of Personnel Management for the December 2016 reporting period. ¹Non-Federal Workers Data calculated from the US Bureau of Labor Statistics 2015 Annual Averages https://www.bls.gov/news.release/archives/vet_03222016.pdf. ²Employment categories consistent with the definitions given by the US Office of Personnel Management "Introduction to the Position Classification Standards" 2009. For a description of the employment categories, refer to <http://www.opm.gov/policy-data-oversight/classification-qualifications/classifying-general-schedule-positions/positionclassificationintro.pdf>.

Who are the Civilian Federal Employees in

Maine - 2015

Federal Workers in Maine: 11,511

Percentage Who Are Veterans: 26.88%

Non-Federal Workers in Maine: 641,000¹

Percentage Who Are Veterans: 9.05%¹

Five Largest Federal Employers

Navy: 6,063



VA: 1,882



DHS: 958



Defense: 739



Army: 309



Race and Ethnicity

| | | |
|--------------------------------------------|--------|-------|
| White, non-Hispanic | 11,049 | 96.0% |
| Black/African American, non-Hispanic | 94 | 0.8% |
| Hispanic or Latino | 136 | 1.2% |
| Asian, non-Hispanic | 94 | 0.8% |
| Two or more races | 58 | 0.5% |
| American Indian and Alaska Native | 71 | 0.6% |
| Native Hawaiian and Other Pacific Islander | 7 | 0.1% |

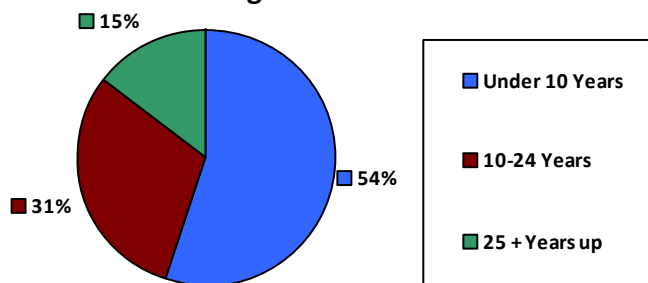
Gender

| | | |
|---|-------|-------|
| M | 8,229 | 71.5% |
| F | 3,282 | 28.5% |

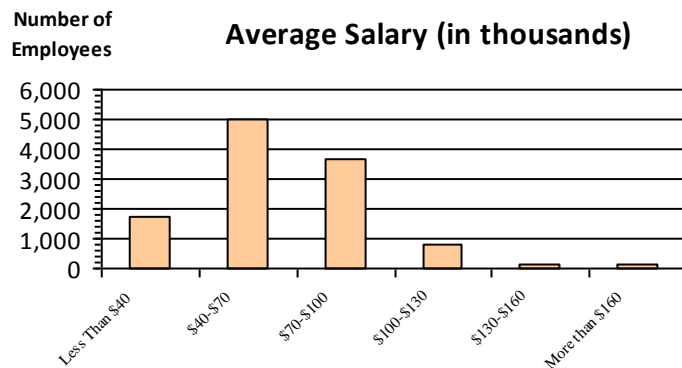
Age

| | | |
|-------|-------|-------|
| <35 | 3,032 | 26.3% |
| 35-54 | 5,591 | 48.6% |
| 55+ | 2,888 | 25.1% |

Length of Service



Average Salary (in thousands)



Educational Attainment

| | | |
|----------------------------|-------|-------|
| HS or Below | 4,635 | 40.3% |
| Occupational Program | 324 | 2.8% |
| Between HS and Bachelors | 2,415 | 21.0% |
| Bachelors + Post Bachelors | 3,268 | 28.4% |
| Masters and Post Grad | 720 | 6.2% |
| Doctorate and Post Doc | 145 | 1.3% |

Type of Employment²

| | | |
|--------------------|-------|-------|
| Administrative | 2,783 | 24.2% |
| Professional | 2,562 | 22.3% |
| Technical | 2,135 | 18.5% |
| Clerical | 421 | 3.7% |
| Other White Collar | 394 | 3.4% |
| Blue Collar | 3,216 | 27.9% |

All data unless otherwise noted is provided by the US Office of Personnel Management for the December 2015 reporting period. ¹Non-Federal Workers Data calculated from the US Bureau of Labor Statistics 2015 Annual Averages https://www.bls.gov/news.release/archives/vet_03222016.pdf. ²Employment categories consistent with the definitions given by the US Office of Personnel Management "Introduction to the Position Classification Standards" 2009. For a description of the employment categories, refer to <http://www.opm.gov/policy-data-oversight/classification-qualifications/classifying-general-schedule-positions/positionclassificationintro.pdf>.

Who are the Civilian Federal Employees in

Maine - 2014

Federal Workers in Maine: 10,809

Percentage Who Are Veterans: 27.31%

Non-Federal Workers in Maine: 651,000¹

Percentage Who Are Veterans: 9.06%¹

Five Largest Federal Employers

Navy: 5,527



VA: 1,760



DHS: 990



Defense: 708



Army: 329



Race and Ethnicity

| | | |
|--------------------------------------------|--------|-------|
| White, non-Hispanic | 10,405 | 96.3% |
| Black/African American, non-Hispanic | 80 | 0.7% |
| Hispanic or Latino | 123 | 1.1% |
| Asian, non-Hispanic | 78 | 0.7% |
| Two or more races | 50 | 0.5% |
| American Indian and Alaska Native | 66 | 0.6% |
| Native Hawaiian and Other Pacific Islander | 6 | 0.1% |

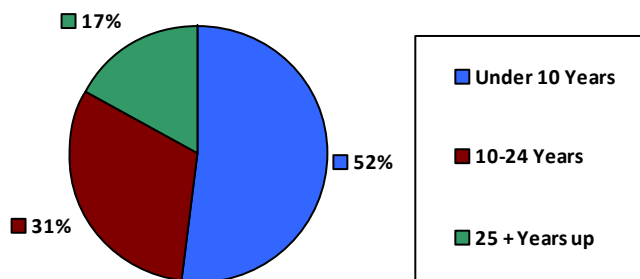
Gender

| | | |
|---|-------|-------|
| M | 7,740 | 71.6% |
| F | 3,069 | 28.4% |

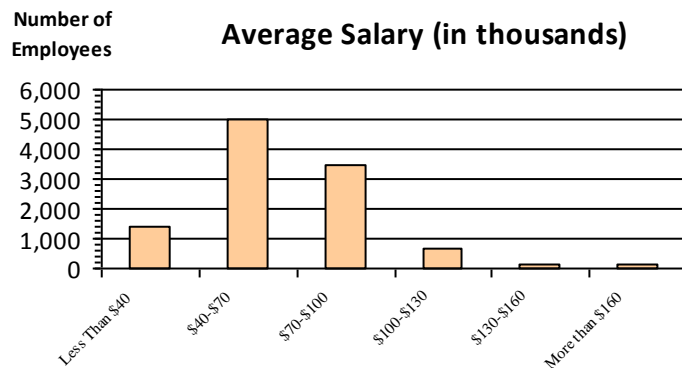
Age

| | | |
|-------|-------|-------|
| <35 | 2,618 | 24.2% |
| 35-54 | 5,374 | 49.7% |
| 55+ | 2,817 | 26.1% |

Length of Service



Average Salary (in thousands)



Educational Attainment

| | | |
|----------------------------|-------|-------|
| HS or Below | 4,374 | 40.5% |
| Occupational Program | 321 | 3.0% |
| Between HS and Bachelors | 2,239 | 20.7% |
| Bachelors + Post Bachelors | 3,106 | 28.7% |
| Masters and Post Grad | 644 | 6.0% |
| Doctorate and Post Doc | 118 | 1.1% |

Type of Employment²

| | | |
|--------------------|-------|-------|
| Administrative | 2,716 | 25.1% |
| Professional | 2,394 | 22.1% |
| Technical | 2,084 | 19.3% |
| Clerical | 363 | 3.4% |
| Other White Collar | 370 | 3.4% |
| Blue Collar | 2,882 | 26.7% |

All data unless otherwise noted is provided by the US Office of Personnel Management for the December 2014 reporting period. ¹Non-Federal Workers Data calculated from the US Bureau of Labor Statistics 2014 Annual Averages https://www.bls.gov/news.release/archives/vet_03182015.pdf. ²Employment categories consistent with the definitions given by the US Office of Personnel Management "Introduction to the Position Classification Standards" 2009. For a description of the employment categories, refer to <http://www.opm.gov/policy-data-oversight/classification-qualifications/classifying-general-schedule-positions/positionclassificationintro.pdf>.

Who are the Civilian Federal Employees in

Maine - 2013

Federal Workers in Maine: 10,657

Percentage Who Are Veterans: 27.45%

Non-Federal Workers in Maine: 654,000¹

Percentage Who Are Veterans: 9.78%¹

Five Largest Federal Employers

Navy: 5,381



VA: 1,727



DHS: 1,020



Defense: 697



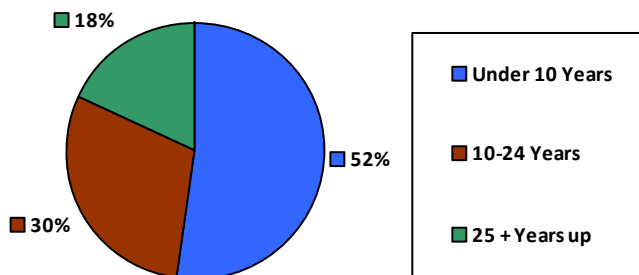
Army: 308



Race and Ethnicity

| | | |
|--------------------------------------------|--------|-------|
| White, non-Hispanic | 10,280 | 96.5% |
| Black/African American, non-Hispanic | 69 | 0.6% |
| Hispanic or Latino | 113 | 1.1% |
| Asian, non-Hispanic | 79 | 0.7% |
| Two or more races | 45 | 0.4% |
| American Indian and Alaska Native | 65 | 0.6% |
| Native Hawaiian and Other Pacific Islander | 5 | 0.0% |

Length of Service



Educational Attainment

| | | |
|----------------------------|-------|-------|
| HS or Below | 4,347 | 40.8% |
| Occupational Program | 321 | 3.0% |
| Between HS and Bachelors | 2,212 | 20.8% |
| Bachelors + Post Bachelors | 3,026 | 28.4% |
| Masters and Post Grad | 618 | 5.8% |
| Doctorate and Post Doc | 106 | 1.0% |

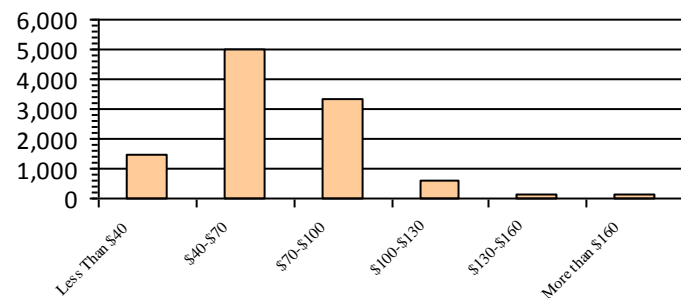
Gender

| | | |
|---|-------|-------|
| M | 7,607 | 71.4% |
| F | 3,050 | 28.6% |

Age

| | | |
|-------|-------|-------|
| <35 | 2,514 | 23.6% |
| 35-54 | 5,342 | 50.1% |
| 55+ | 2,801 | 26.3% |

Average Salary (in thousands)



Type of Employment²

| | | |
|--------------------|-------|-------|
| Administrative | 2,651 | 24.9% |
| Professional | 2,328 | 21.8% |
| Technical | 2,038 | 19.1% |
| Clerical | 449 | 4.2% |
| Other White Collar | 371 | 3.5% |
| Blue Collar | 2,820 | 26.5% |

All data unless otherwise noted is provided by the US Office of Personnel Management for the December 2013 reporting period. ¹Non-Federal Workers Data calculated from the US Bureau of Labor Statistics 2013 Annual Averages https://www.bls.gov/news.release/archives/vet_03202014.pdf. ²Employment categories consistent with the definitions given by the US Office of Personnel Management "Introduction to the Position Classification Standards" 2009. For a description of the employment categories, refer to <http://www.opm.gov/policy-data-oversight/classification-qualifications/classifying-general-schedule-positions/positionclassificationintro.pdf>.