

Who are the Civilian Federal Employees in

Louisiana - 2022

Federal Workers in Louisiana: 21,962

Percentage Who Are Veterans: 29.39%

Non-Federal Workers in Louisiana: 1,994,000¹

Percentage Who Are Veterans: 5.67%¹

Five Largest Federal Employers

VA: 6,197



Army: 3,076



DHS: 2,227



Agriculture: 2,091



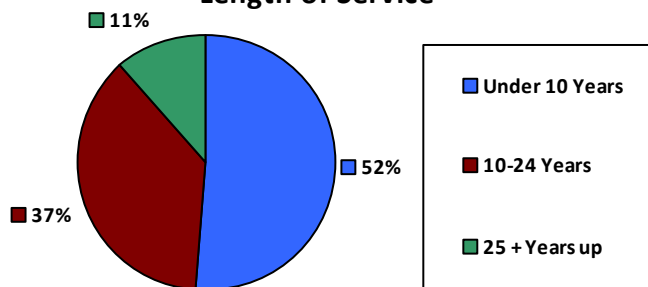
Justice: 1,935



Race and Ethnicity

White, non-Hispanic	12,180	55.5%
Black/African American, non-Hispanic	7,712	35.1%
Hispanic or Latino	900	4.1%
Asian, non-Hispanic	503	2.3%
Two or more races	390	1.8%
American Indian and Alaska Native	170	0.8%
Native Hawaiian and Other Pacific Islander	43	0.2%

Length of Service



Educational Attainment

HS or Below	7,275	33.1%
Occupational Program	601	2.7%
Between HS and Bachelors	3,774	17.2%
Bachelors + Post Bachelors	6,795	30.9%
Masters and Post Grad	2,940	13.4%
Doctorate and Post Doc	562	2.6%

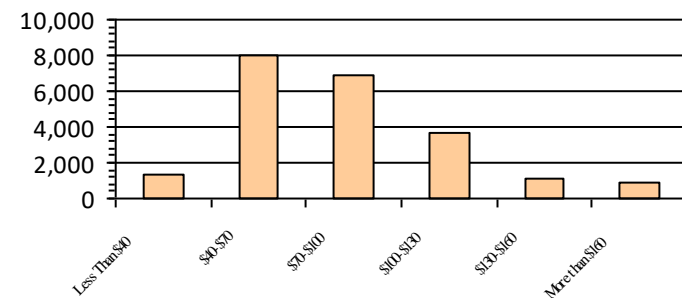
Gender

M	11,389	51.9%
F	10,573	48.1%

Age

<35	3,572	16.3%
35-54	11,938	54.4%
55+	6,452	29.4%

Average Salary (in thousands)



Type of Employment²

Administrative	7,620	34.7%
Professional	5,695	25.9%
Technical	3,995	18.2%
Clerical	1,379	6.3%
Other White Collar	1,278	5.8%
Blue Collar	1,978	9.0%

All data unless otherwise noted is provided by the US Office of Personnel Management for the December 2022 reporting period. ¹Non-Federal Workers Data calculated from the US Bureau of Labor Statistics 2022 Annual Averages <https://www.bls.gov/news.release/pdf/vet.pdf>. ²Employment categories consistent with the definitions given by the US Office of Personnel Management "Introduction to the Position Classification Standards" 2009. For a description of the employment categories, refer to <http://www.opm.gov/policy-data-oversight/classification-qualifications/classifying-general-schedule-positions/positionclassificationintro.pdf>.