

Who are the Civilian Federal Employees in

Louisiana - 2021

Federal Workers in Louisiana: 22,018

Percentage Who Are Veterans: 30.30%

Non-Federal Workers in Louisiana: 1,930,000¹

Percentage Who Are Veterans: 6.22%¹

Five Largest Federal Employers

VA: 6,133



Army: 3,489



DHS: 2,159



Agriculture: 2,085



Justice: 1,981



Race and Ethnicity

White, non-Hispanic	12,325	56.0%
Black/African American, non-Hispanic	7,654	34.8%
Hispanic or Latino	915	4.2%
Asian, non-Hispanic	496	2.3%
Two or more races	356	1.6%
American Indian and Alaska Native	184	0.8%
Native Hawaiian and Other Pacific Islander	40	0.2%

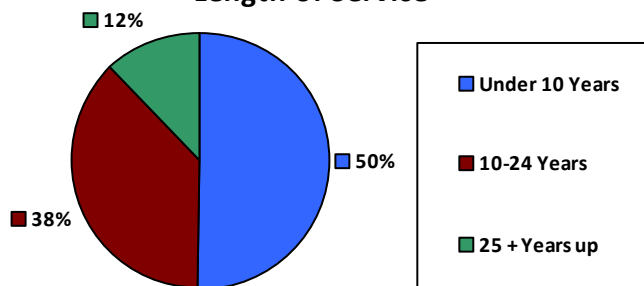
Gender

M	11,588	52.6%
F	10,430	47.4%

Age

<35	3,501	15.9%
35-54	11,986	54.4%
55+	6,531	29.7%

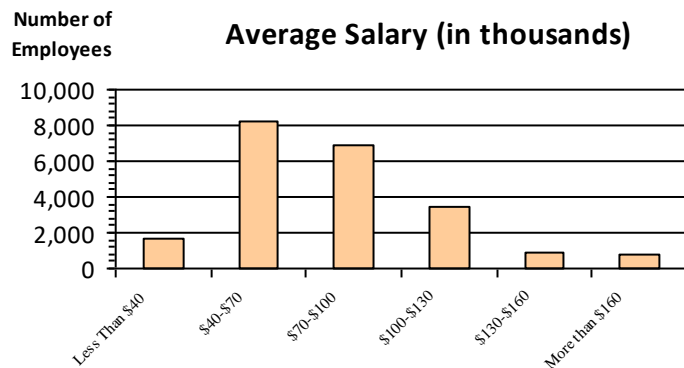
Length of Service



Educational Attainment

HS or Below	7,175	32.6%
Occupational Program	606	2.8%
Between HS and Bachelors	3,836	17.4%
Bachelors + Post Bachelors	6,897	31.3%
Masters and Post Grad	2,933	13.3%
Doctorate and Post Doc	558	2.5%

Average Salary (in thousands)



Type of Employment²

Administrative	5,692	25.8%
Professional	4,099	18.6%
Technical	1,331	6.0%
Clerical	1,303	5.9%
Other White Collar	2,012	9.1%
Blue Collar	2,099	9.5%

All data unless otherwise noted is provided by the US Office of Personnel Management for the December 2015 reporting period. ¹Non-Federal Workers Data calculated from the US Bureau of Labor Statistics 2015 Annual Averages https://www.bls.gov/news.release/archives/vet_03222016.pdf. ²Employment categories consistent with the definitions given by the US Office of Personnel Management "Introduction to the Position Classification Standards" 2009. For a description of the employment categories, refer to <http://www.opm.gov/policy-data-oversight/classification-qualifications/classifying-general-schedule-positions/positionclassificationintro.pdf>.

Who are the Civilian Federal Employees in

Louisiana - 2020

Federal Workers in Louisiana: 22,356

Percentage Who Are Veterans: 30.66%

Non-Federal Workers in Louisiana: 1,884,000¹

Percentage Who Are Veterans: 6.79%¹

Five Largest Federal Employers

VA: 6,350



Army: 3,409



DHS: 2,185



Agriculture: 2,056



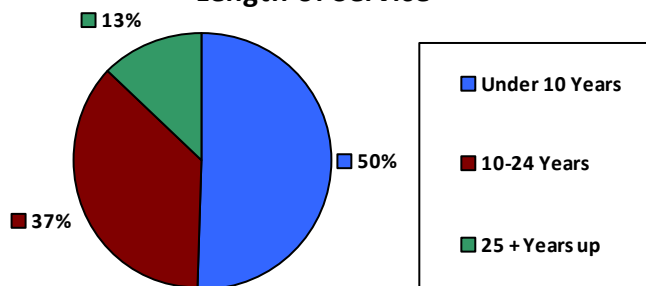
Justice: 2,022



Race and Ethnicity

White, non-Hispanic	12,524	56.0%
Black/African American, non-Hispanic	7,800	34.9%
Hispanic or Latino	921	4.1%
Asian, non-Hispanic	498	2.2%
Two or more races	348	1.6%
American Indian and Alaska Native	188	0.8%
Native Hawaiian and Other Pacific Islander	39	0.2%

Length of Service



Educational Attainment

HS or Below	7,294	32.6%
Occupational Program	634	2.8%
Between HS and Bachelors	3,997	17.9%
Bachelors + Post Bachelors	6,942	31.0%
Masters and Post Grad	2,922	13.1%
Doctorate and Post Doc	550	2.5%

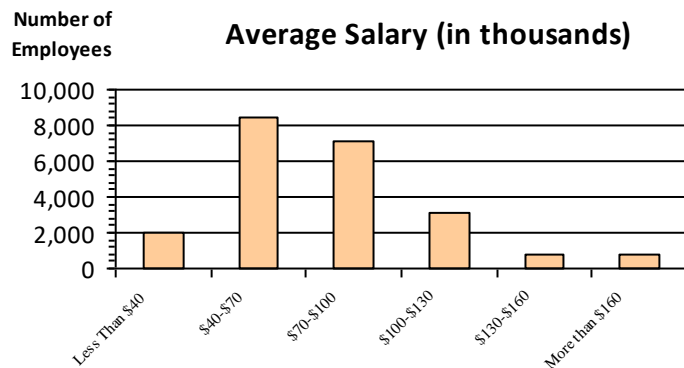
Gender

M	11,775	52.7%
F	10,581	47.3%

Age

<35	3,621	16.2%
35-54	12,113	54.2%
55+	6,622	29.6%

Average Salary (in thousands)



Type of Employment²

Administrative	7,587	33.9%
Professional	5,677	25.4%
Technical	4,119	18.4%
Clerical	1,503	6.7%
Other White Collar	1,351	6.0%
Blue Collar	2,099	9.4%

All data unless otherwise noted is provided by the US Office of Personnel Management for the December 2015 reporting period. ¹Non-Federal Workers Data calculated from the US Bureau of Labor Statistics 2015 Annual Averages https://www.bls.gov/news.release/archives/vet_03222016.pdf. ²Employment categories consistent with the definitions given by the US Office of Personnel Management "Introduction to the Position Classification Standards" 2009. For a description of the employment categories, refer to <http://www.opm.gov/policy-data-oversight/classification-qualifications/classifying-general-schedule-positions/positionclassificationintro.pdf>.

Who are the Civilian Federal Employees in

Louisiana - 2019

Federal Workers in Louisiana: 22,400

Percentage Who Are Veterans: 30.93%

Non-Federal Workers in Louisiana: 1,982,000¹

Percentage Who Are Veterans: 5.80%¹

Five Largest Federal Employers

VA: 6,360



Army: 3,384



DHS: 2,208



Agriculture: 2,096



Justice: 2,004



Race and Ethnicity

White, non-Hispanic	12,530	55.9%
Black/African American, non-Hispanic	7,835	35.0%
Hispanic or Latino	866	3.9%
Asian, non-Hispanic	496	2.2%
Two or more races	344	1.5%
American Indian and Alaska Native	186	0.8%
Native Hawaiian and Other Pacific Islander	38	0.2%

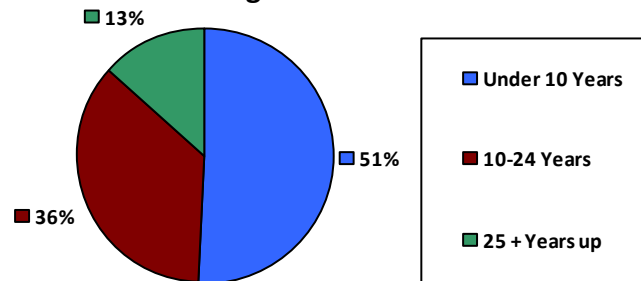
Gender

M	11,838	52.8%
F	10,562	47.1%

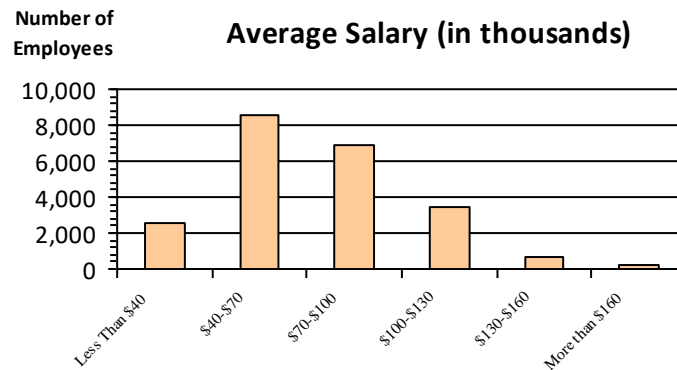
Age

<35	3,665	16.4%
35-54	12,177	54.4%
55+	6,558	29.3%

Length of Service



Average Salary (in thousands)



Educational Attainment

HS or Below	6,855	30.6%
Occupational Program	936	4.2%
Between HS and Bachelors	4,282	19.1%
Bachelors + Post Bachelors	6,972	31.1%
Masters and Post Grad	2,777	12.4%
Doctorate and Post Doc	557	2.5%

Type of Employment²

Administrative	7,466	33.3%
Professional	5,623	25.1%
Technical	4,191	18.7%
Clerical	1,588	7.1%
Other White Collar	1,389	6.2%
Blue Collar	2,121	9.5%

All data unless otherwise noted is provided by the US Office of Personnel Management for the December 2015 reporting period. ¹Non-Federal Workers Data calculated from the US Bureau of Labor Statistics 2015 Annual Averages https://www.bls.gov/news.release/archives/vet_03222016.pdf. ²Employment categories consistent with the definitions given by the US Office of Personnel Management "Introduction to the Position Classification Standards" 2009. For a description of the employment categories, refer to <http://www.opm.gov/policy-data-oversight/classification-qualifications/classifying-general-schedule-positions/positionclassificationintro.pdf>.

Who are the Civilian Federal Employees in

Louisiana - 2018

Federal Workers in Louisiana: 22,157

Percentage Who Are Veterans: 31.36%

Non-Federal Workers in Louisiana: 1,996,000¹

Percentage Who Are Veterans: 5.91%¹

Five Largest Federal Employers

VA: 6,263



Army: 3,348



DHS: 2,204



Agriculture: 2,185



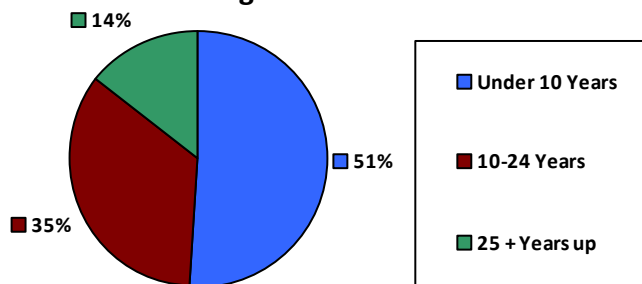
Justice: 1,971



Race and Ethnicity

White, non-Hispanic	12,545	56.6%
Black/African American, non-Hispanic	7,668	34.6%
Hispanic or Latino	831	3.8%
Asian, non-Hispanic	486	2.2%
Two or more races	314	1.4%
American Indian and Alaska Native	183	0.8%
Native Hawaiian and Other Pacific Islander	36	0.2%

Length of Service



Educational Attainment

HS or Below	6,596	29.8%
Occupational Program	939	4.2%
Between HS and Bachelors	4,356	19.7%
Bachelors + Post Bachelors	7,042	31.8%
Masters and Post Grad	2,697	12.2%
Doctorate and Post Doc	507	2.3%

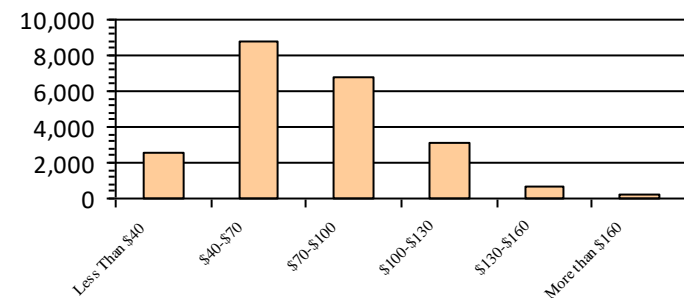
Gender

M	11,840	53.5%
F	10,293	46.5%

Age

<35	3,681	16.6%
35-54	12,044	54.4%
55+	6,432	29.0%

Average Salary (in thousands)



Type of Employment²

Administrative	7,558	34.1%
Professional	5,509	24.9%
Technical	4,277	19.3%
Clerical	1,465	6.6%
Other White Collar	1,169	5.3%
Blue Collar	2,159	9.7%

All data unless otherwise noted is provided by the US Office of Personnel Management for the December 2018 reporting period. ¹Non-Federal Workers Data calculated from the US Bureau of Labor Statistics 2018 Annual Averages www.bls.gov/news.release/pdf/vet.pdf. ²Employment categories consistent with the definitions given by the US Office of Personnel Management "Introduction to the Position Classification Standards" 2009. For a description of the employment categories, refer to www.opm.gov/policy-data-oversight/classification-qualifications/classifying-general-schedule-positions/positionclassificationintro.pdf.

Who are the Civilian Federal Employees in

Louisiana - 2017

Federal Workers in Louisiana: 21,845

Percentage Who Are Veterans: 31.62%

Non-Federal Workers in Louisiana: 1,990,000¹

Percentage Who Are Veterans: 7.86%²

Five Largest Federal Employers

VA: 5,759



Army: 3,222



Agriculture: 2,310



DHS: 2,254



Justice: 1,990



Race and Ethnicity

White, non-Hispanic	12,590	57.6%
Black/African American, non-Hispanic	7,453	34.1%
Hispanic or Latino	805	3.7%
Asian, non-Hispanic	468	2.1%
Two or more races	292	1.3%
American Indian and Alaska Native	190	0.9%
Native Hawaiian and Other Pacific Islander	40	0.2%

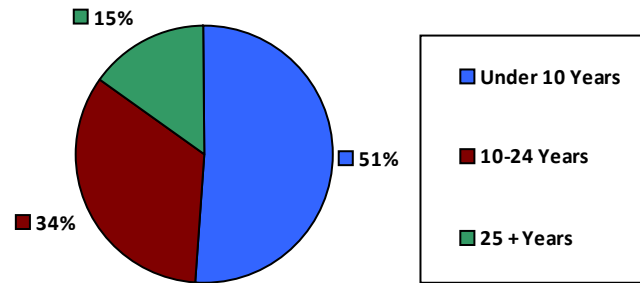
Gender

M	11,738	53.8%
F	10,091	46.2%

Age

<35	3,706	17.0%
35-54	11,832	54.2%
55+	6,307	28.9%

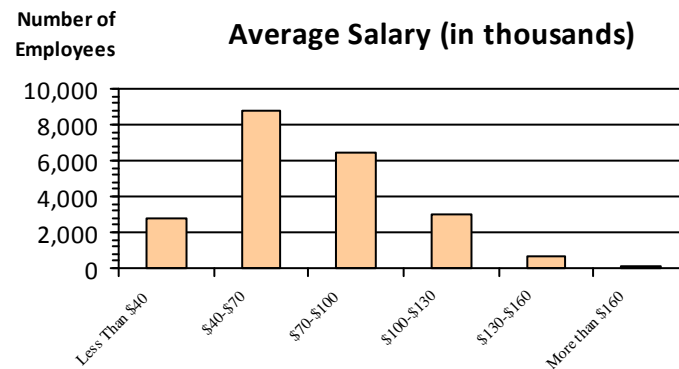
Length of Service



Educational Attainment

HS or Below	6,584	30.1%
Occupational Program	901	4.1%
Between HS and Bachelors	4,326	19.8%
Bachelors + Post Bachelors	6,901	31.6%
Masters and Post Grad	2,642	12.1%
Doctorate and Post Doc	468	2.1%

Average Salary (in thousands)



Type of Employment²

Administrative	7,586	34.7%
Professional	5,302	24.3%
Technical	4,258	19.5%
Clerical	1,405	6.4%
Other White Collar	1,136	5.2%
Blue Collar	2,157	9.9%

All data unless otherwise noted is provided by the US Office of Personnel Management for the December 2017 reporting period. Non-Federal Workers Data calculated from the US Bureau of Labor Statistics 2017 Annual Averages <https://www.bls.gov/news.release/vet.htm>.¹ Employment categories consistent with the definitions given by the US Office of Personnel Management "Introduction to the Position Classification Standards" (Revised: 2009), available at <https://www.opm.gov/policy-data-oversight/classification-qualifications/classifying-general-schedule-positions/positionclassificationintro.pdf>.²

Who are the Civilian Federal Employees in

Louisiana - 2016

Federal Workers in Louisiana: 21,488

Percentage Who Are Veterans: 31.94%

Non-Federal Workers in Louisiana: 1,986,000¹

Percentage Who Are Veterans: 7.75%¹

Five Largest Federal Employers

VA: 5,137



Army: 3,365



Agriculture: 2,436



DHS: 2,138



Justice: 2,043



Race and Ethnicity

White, non-Hispanic	12,771	59.4%
Black/African American, non-Hispanic	7,022	32.7%
Hispanic or Latino	754	3.5%
Asian, non-Hispanic	449	2.1%
Two or more races	260	1.2%
American Indian and Alaska Native	193	0.9%
Native Hawaiian and Other Pacific Islander	31	0.1%

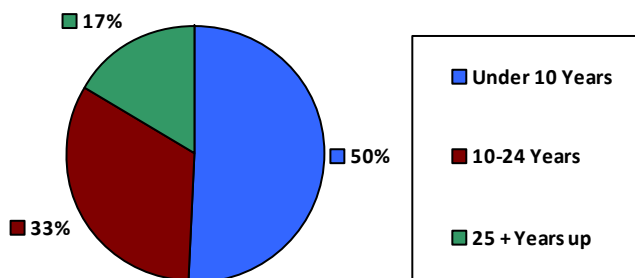
Gender

M	11,757	54.7%
F	9,729	45.3%

Age

<35	3,735	17.4%
35-54	11,640	54.2%
55+	6,113	28.4%

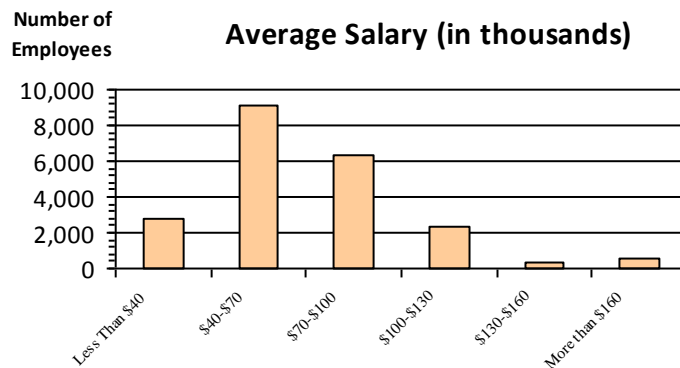
Length of Service



Educational Attainment

HS or Below	6,595	30.7%
Occupational Program	867	4.0%
Between HS and Bachelors	4,286	19.9%
Bachelors + Post Bachelors	6,748	31.4%
Masters and Post Grad	2,515	11.7%
Doctorate and Post Doc	455	2.1%

Average Salary (in thousands)



Type of Employment²

Administrative	7,420	34.5%
Professional	5,068	23.6%
Technical	4,266	19.9%
Clerical	1,371	6.4%
Other White Collar	1,190	5.5%
Blue Collar	2,173	10.1%

All data unless otherwise noted is provided by the US Office of Personnel Management for the December 2016 reporting period. ¹Non-Federal Workers Data calculated from the US Bureau of Labor Statistics 2015 Annual Averages https://www.bls.gov/news.release/archives/vet_03222016.pdf. ²Employment categories consistent with the definitions given by the US Office of Personnel Management "Introduction to the Position Classification Standards" 2009. For a description of the employment categories, refer to <http://www.opm.gov/policy-data-oversight/classification-qualifications/classifying-general-schedule-positions/positionclassificationintro.pdf>.

Who are the Civilian Federal Employees in

Louisiana - 2015

Federal Workers in Louisiana: 21,021

Percentage Who Are Veterans: 31.73%

Non-Federal Workers in Louisiana: 2,019,000¹

Percentage Who Are Veterans: 8.07%¹

Five Largest Federal Employers

VA: 4,907



Army: 3,372



Agriculture: 2,436



Justice: 2,040



DHS: 1,921



Race and Ethnicity

White, non-Hispanic	12,710	60.5%
Black/African American, non-Hispanic	6,710	31.9%
Hispanic or Latino	708	3.4%
Asian, non-Hispanic	445	2.1%
Two or more races	223	1.1%
American Indian and Alaska Native	191	0.9%
Native Hawaiian and Other Pacific Islander	33	0.2%

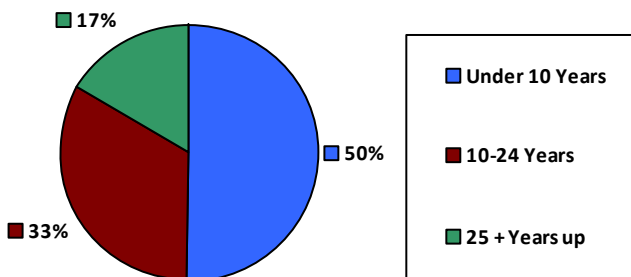
Gender

M	11,490	54.7%
F	9,531	45.3%

Age

<35	3,683	17.5%
35-54	11,474	54.6%
55+	5,864	27.9%

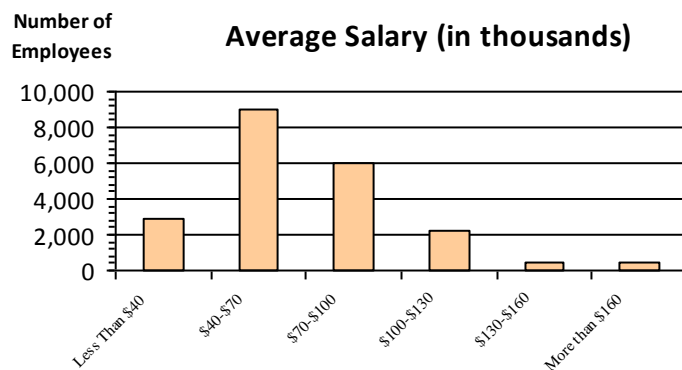
Length of Service



Educational Attainment

HS or Below	6,423	30.6%
Occupational Program	898	4.3%
Between HS and Bachelors	4,226	20.1%
Bachelors + Post Bachelors	6,603	31.4%
Masters and Post Grad	2,411	11.5%
Doctorate and Post Doc	444	2.1%

Average Salary (in thousands)



Type of Employment²

Administrative	7,142	34.0%
Professional	4,987	23.7%
Technical	4,295	20.4%
Clerical	1,285	6.1%
Other White Collar	1,234	5.9%
Blue Collar	2,078	9.9%

All data unless otherwise noted is provided by the US Office of Personnel Management for the December 2015 reporting period. ¹Non-Federal Workers Data calculated from the US Bureau of Labor Statistics 2015 Annual Averages https://www.bls.gov/news.release/archives/vet_03222016.pdf. ²Employment categories consistent with the definitions given by the US Office of Personnel Management "Introduction to the Position Classification Standards" 2009. For a description of the employment categories, refer to <http://www.opm.gov/policy-data-oversight/classification-qualifications/classifying-general-schedule-positions/positionclassificationintro.pdf>.

Who are the Civilian Federal Employees in

Louisiana - 2014

Federal Workers in Louisiana: 20,899

Percentage Who Are Veterans: 30.84%

Non-Federal Workers in Louisiana: 2,011,000¹

Percentage Who Are Veterans: 8.20%¹

Five Largest Federal Employers

VA: 4,750



Army: 3,405



Agriculture: 2,468



Justice: 2,065



DHS: 1,926



Race and Ethnicity

White, non-Hispanic	12,716	60.8%
Black/African American, non-Hispanic	6,646	31.8%
Hispanic or Latino	675	3.2%
Asian, non-Hispanic	429	2.1%
Two or more races	197	0.9%
American Indian and Alaska Native	200	1.0%
Native Hawaiian and Other Pacific Islander	33	0.2%

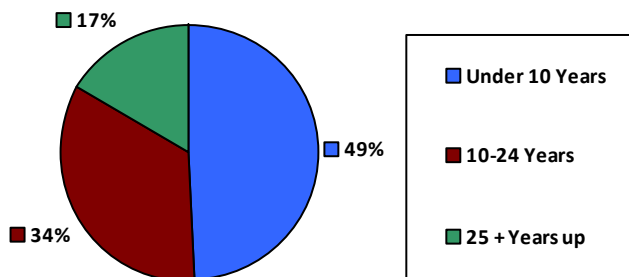
Gender

M	11,353	54.3%
F	9,546	45.7%

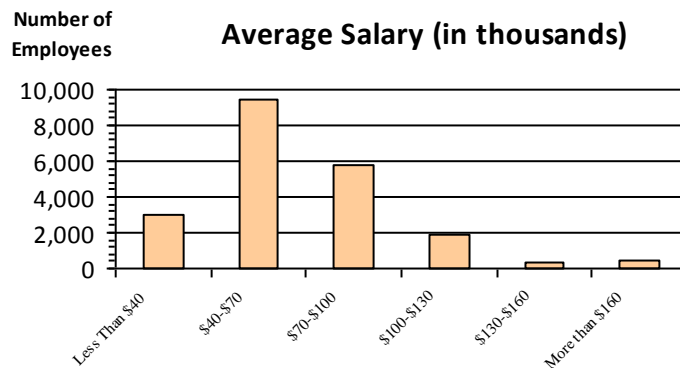
Age

<35	3,755	18.0%
35-54	11,402	54.6%
55+	5,742	27.5%

Length of Service



Average Salary (in thousands)



Educational Attainment

HS or Below	6,494	31.1%
Occupational Program	883	4.2%
Between HS and Bachelors	4,221	20.2%
Bachelors + Post Bachelors	6,551	31.3%
Masters and Post Grad	2,298	11.0%
Doctorate and Post Doc	430	2.1%

Type of Employment²

Administrative	7,167	34.3%
Professional	4,908	23.5%
Technical	4,362	20.9%
Clerical	1,266	6.1%
Other White Collar	1,144	5.5%
Blue Collar	2,052	9.8%

All data unless otherwise noted is provided by the US Office of Personnel Management for the December 2014 reporting period. ¹Non-Federal Workers Data calculated from the US Bureau of Labor Statistics 2014 Annual Averages https://www.bls.gov/news.release/archives/vet_03182015.pdf. ²Employment categories consistent with the definitions given by the US Office of Personnel Management "Introduction to the Position Classification Standards" 2009. For a description of the employment categories, refer to <http://www.opm.gov/policy-data-oversight/classification-qualifications/classifying-general-schedule-positions/positionclassificationintro.pdf>.

Who are the Civilian Federal Employees in

Louisiana - 2013

Federal Workers in Louisiana: 21,110

Percentage Who Are Veterans: 30.49%

Non-Federal Workers in Louisiana: 1,935,000¹

Percentage Who Are Veterans: 8.53%¹

Five Largest Federal Employers

VA: 4,695



Army: 3,493



Agriculture: 2,508



DHS: 2,042



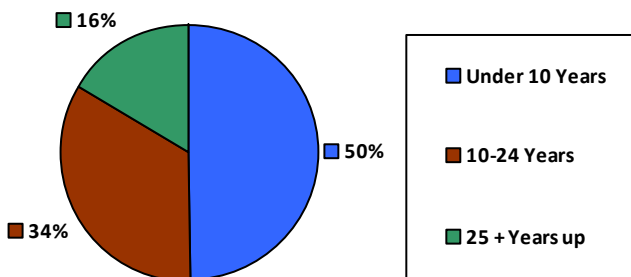
Justice: 2,027



Race and Ethnicity

White, non-Hispanic	12,978	61.5%
Black/African American, non-Hispanic	6,613	31.3%
Hispanic or Latino	685	3.2%
Asian, non-Hispanic	427	2.0%
Two or more races	175	0.8%
American Indian and Alaska Native	203	1.0%
Native Hawaiian and Other Pacific Islander	26	0.1%

Length of Service



Educational Attainment

HS or Below	6,595	31.2%
Occupational Program	892	4.2%
Between HS and Bachelors	4,328	20.5%
Bachelors + Post Bachelors	6,619	31.4%
Masters and Post Grad	2,254	10.7%
Doctorate and Post Doc	408	1.9%

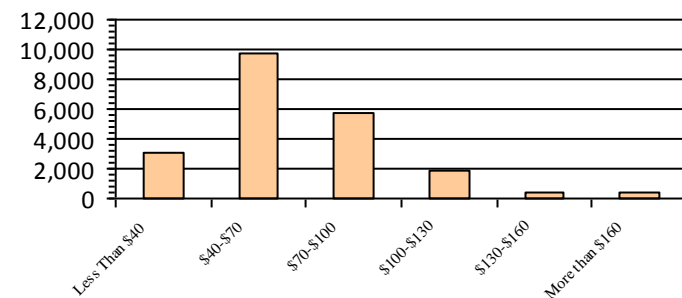
Gender

M	11,397	54.0%
F	9,713	46.0%

Age

<35	3,811	18.1%
35-54	11,683	55.3%
55+	5,616	26.6%

Average Salary (in thousands)



Type of Employment²

Administrative	7,256	34.4%
Professional	4,923	23.3%
Technical	4,293	20.3%
Clerical	1,472	7.0%
Other White Collar	1,109	5.3%
Blue Collar	2,056	9.7%

All data unless otherwise noted is provided by the US Office of Personnel Management for the December 2013 reporting period. ¹Non-Federal Workers Data calculated from the US Bureau of Labor Statistics 2013 Annual Averages https://www.bls.gov/news.release/archives/vet_03202014.pdf. ²Employment categories consistent with the definitions given by the US Office of Personnel Management "Introduction to the Position Classification Standards" 2009. For a description of the employment categories, refer to <http://www.opm.gov/policy-data-oversight/classification-qualifications/classifying-general-schedule-positions/positionclassificationintro.pdf>.