

Who are the Civilian Federal Employees in

Kansas - 2021

Federal Workers in Kansas: 17,797

Percentage Who Are Veterans: 36.01%

Non-Federal Workers in Kansas: 1,413,000¹

Percentage Who Are Veterans: 6.16%¹

Five Largest Federal Employers

Army: 5,566



VA: 5,409



Agriculture: 1,221



Air Force: 951



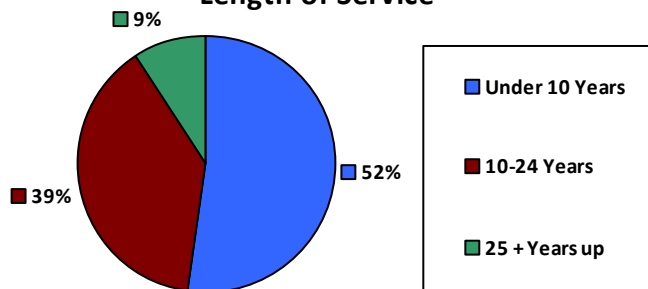
DHS: 748



Race and Ethnicity

White, non-Hispanic	13,772	77.4%
Black/African American, non-Hispanic	1,836	10.3%
Hispanic or Latino	928	5.2%
Asian, non-Hispanic	454	2.6%
Two or more races	351	2.0%
American Indian and Alaska Native	380	2.1%
Native Hawaiian and Other Pacific Islander	54	0.3%

Length of Service



Educational Attainment

HS or Below	5,395	30.3%
Occupational Program	375	2.1%
Between HS and Bachelors	3,388	19.0%
Bachelors + Post Bachelors	5,016	28.2%
Masters and Post Grad	2,978	16.7%
Doctorate and Post Doc	633	3.6%

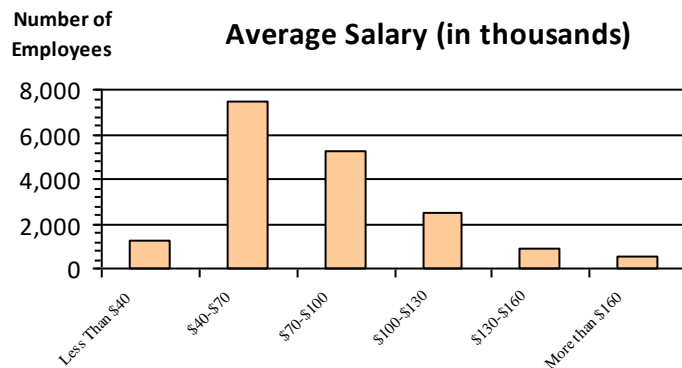
Gender

M	9,491	53.3%
F	8,306	46.7%

Age

<35	2,813	15.8%
35-54	9,571	53.8%
55+	5,413	30.4%

Average Salary (in thousands)



Type of Employment²

Administrative	4,505	25.3%
Professional	3,837	21.6%
Technical	1,067	6.0%
Clerical	556	3.1%
Other White Collar	1,605	9.0%
Blue Collar	1,611	9.1%

All data unless otherwise noted is provided by the US Office of Personnel Management for the December 2015 reporting period. ¹Non-Federal Workers Data calculated from the US Bureau of Labor Statistics 2015 Annual Averages https://www.bls.gov/news.release/archives/vet_03222016.pdf. ²Employment categories consistent with the definitions given by the US Office of Personnel Management "Introduction to the Position Classification Standards" 2009. For a description of the employment categories, refer to <http://www.opm.gov/policy-data-oversight/classification-qualifications/classifying-general-schedule-positions/positionclassificationintro.pdf>.

Who are the Civilian Federal Employees in

Kansas - 2020

Federal Workers in Kansas: 17,852

Percentage Who Are Veterans: 36.85%

Non-Federal Workers in Kansas: 1,390,000¹

Percentage Who Are Veterans: 6.33%¹

Five Largest Federal Employers

Army: 5,613



VA: 5,539



Agriculture: 1,115



Air Force: 1,007



DHS: 756



Race and Ethnicity

White, non-Hispanic	13,813	77.4%
Black/African American, non-Hispanic	1,896	10.6%
Hispanic or Latino	923	5.2%
Asian, non-Hispanic	431	2.4%
Two or more races	329	1.8%
American Indian and Alaska Native	374	2.1%
Native Hawaiian and Other Pacific Islander	67	0.4%

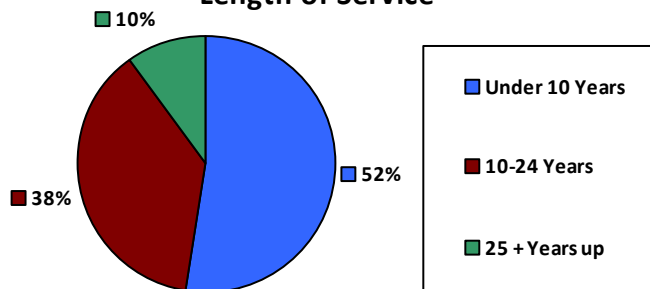
Gender

M	9,498	53.2%
F	8,354	46.8%

Age

<35	2,919	16.3%
35-54	9,506	53.2%
55+	5,427	30.4%

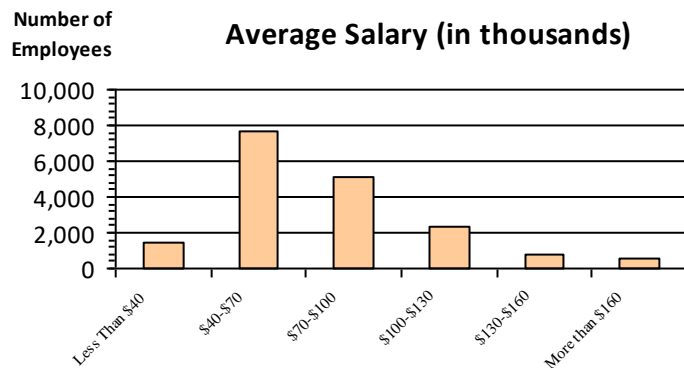
Length of Service



Educational Attainment

HS or Below	5,384	30.2%
Occupational Program	372	2.1%
Between HS and Bachelors	3,525	19.7%
Bachelors + Post Bachelors	4,994	28.0%
Masters and Post Grad	2,948	16.5%
Doctorate and Post Doc	608	3.4%

Average Salary (in thousands)



Type of Employment²

Administrative	6,161	34.5%
Professional	4,429	24.8%
Technical	3,938	22.1%
Clerical	1,131	6.3%
Other White Collar	573	3.2%
Blue Collar	1,611	9.0%

All data unless otherwise noted is provided by the US Office of Personnel Management for the December 2015 reporting period. ¹Non-Federal Workers Data calculated from the US Bureau of Labor Statistics 2015 Annual Averages https://www.bls.gov/news.release/archives/vet_03222016.pdf. ²Employment categories consistent with the definitions given by the US Office of Personnel Management "Introduction to the Position Classification Standards" 2009. For a description of the employment categories, refer to <http://www.opm.gov/policy-data-oversight/classification-qualifications/classifying-general-schedule-positions/positionclassificationintro.pdf>.

Who are the Civilian Federal Employees in

Kansas - 2019

Federal Workers in Kansas: 17,660

Percentage Who Are Veterans: 37.00%

Non-Federal Workers in Kansas: 1,408,000¹

Percentage Who Are Veterans: 5.97%¹

Five Largest Federal Employers

Army: 5,580



VA: 5,367



Air Force: 1,022



Agriculture: 993



DHS: 789



Race and Ethnicity

White, non-Hispanic	13,689	77.5%
Black/African American, non-Hispanic	1,901	10.8%
Hispanic or Latino	892	5.1%
Asian, non-Hispanic	402	2.3%
Two or more races	329	1.9%
American Indian and Alaska Native	381	2.2%
Native Hawaiian and Other Pacific Islander	50	0.3%

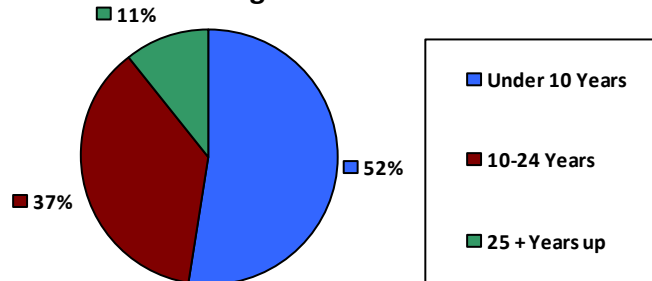
Gender

M	9,479	53.7%
F	8,181	46.3%

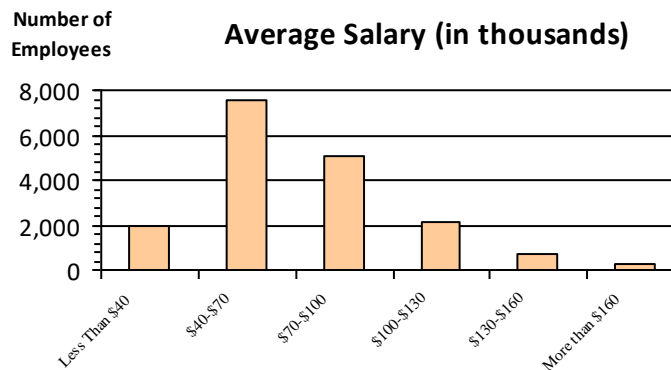
Age

<35	2,872	16.3%
35-54	9,390	53.2%
55+	5,398	30.6%

Length of Service



Average Salary (in thousands)



Educational Attainment

HS or Below	4,945	28.0%
Occupational Program	674	3.8%
Between HS and Bachelors	3,638	20.6%
Bachelors + Post Bachelors	4,996	28.3%
Masters and Post Grad	2,812	15.9%
Doctorate and Post Doc	585	3.3%

Type of Employment²

Administrative	6,143	34.8%
Professional	4,337	24.6%
Technical	3,822	21.6%
Clerical	1,214	6.9%
Other White Collar	552	3.1%
Blue Collar	1,580	8.9%

All data unless otherwise noted is provided by the US Office of Personnel Management for the December 2015 reporting period. ¹Non-Federal Workers Data calculated from the US Bureau of Labor Statistics 2015 Annual Averages https://www.bls.gov/news.release/archives/vet_03222016.pdf. ²Employment categories consistent with the definitions given by the US Office of Personnel Management "Introduction to the Position Classification Standards" 2009. For a description of the employment categories, refer to <http://www.opm.gov/policy-data-oversight/classification-qualifications/classifying-general-schedule-positions/positionclassificationintro.pdf>.

Who are the Civilian Federal Employees in

Kansas - 2018

Federal Workers in Kansas: 17,346

Percentage Who Are Veterans: 37.54%

Non-Federal Workers in Kansas: 1,412,000¹

Percentage Who Are Veterans: 6.73%¹

Five Largest Federal Employers

Army: 5,499



VA: 5,265



Air Force: 1,070



Agriculture: 899



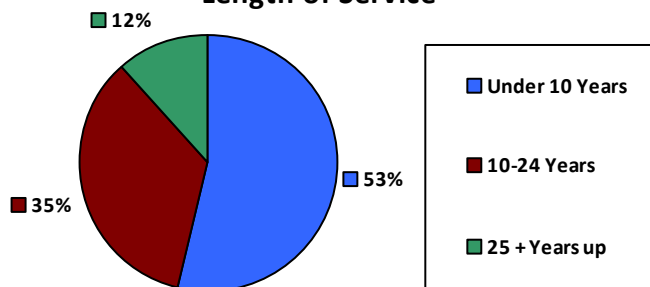
DHS: 761



Race and Ethnicity

White, non-Hispanic	13,478	77.7%
Black/African American, non-Hispanic	1,875	10.8%
Hispanic or Latino	864	5.0%
Asian, non-Hispanic	372	2.1%
Two or more races	318	1.8%
American Indian and Alaska Native	385	2.2%
Native Hawaiian and Other Pacific Islander	50	0.3%

Length of Service



Educational Attainment

HS or Below	4,682	27.0%
Occupational Program	702	4.0%
Between HS and Bachelors	3,681	21.2%
Bachelors + Post Bachelors	4,957	28.6%
Masters and Post Grad	2,744	15.8%
Doctorate and Post Doc	552	3.2%

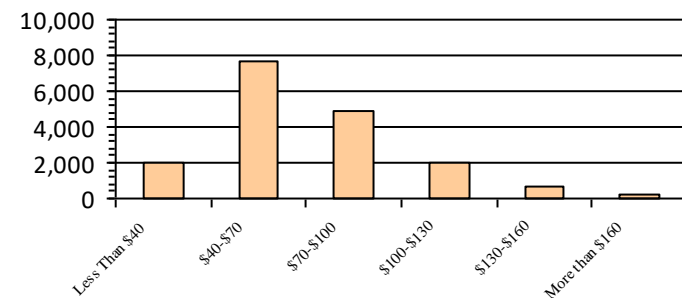
Gender

M	9,369	54.0%
F	7,972	46.0%

Age

<35	2,847	16.4%
35-54	9,255	53.3%
55+	5,244	30.2%

Average Salary (in thousands)



Type of Employment²

Administrative	5,941	34.2%
Professional	4,296	24.8%
Technical	3,877	22.3%
Clerical	1,176	6.8%
Other White Collar	493	2.8%
Blue Collar	1,555	9.0%

All data unless otherwise noted is provided by the US Office of Personnel Management for the December 2018 reporting period. ¹Non-Federal Workers Data calculated from the US Bureau of Labor Statistics 2018 Annual Averages www.bls.gov/news.release/pdf/vet.pdf. ²Employment categories consistent with the definitions given by the US Office of Personnel Management "Introduction to the Position Classification Standards" 2009. For a description of the employment categories, refer to www.opm.gov/policy-data-oversight/classification-qualifications/classifying-general-schedule-positions/positionclassificationintro.pdf.

Who are the Civilian Federal Employees in

Kansas - 2017

Federal Workers in Kansas: 17,127

Percentage Who Are Veterans: 37.56%

Non-Federal Workers in Kansas: 1,405,000¹

Percentage Who Are Veterans: 6.52%²

Five Largest Federal Employers

Army: 5,503



VA: 4,997



Air Force: 1,038



Agriculture: 924



DHS: 769



Race and Ethnicity

White, non-Hispanic	13,305	77.7%
Black/African American, non-Hispanic	1,863	10.9%
Hispanic or Latino	833	4.9%
Asian, non-Hispanic	369	2.2%
Two or more races	310	1.8%
American Indian and Alaska Native	394	2.3%
Native Hawaiian and Other Pacific Islander	50	0.3%

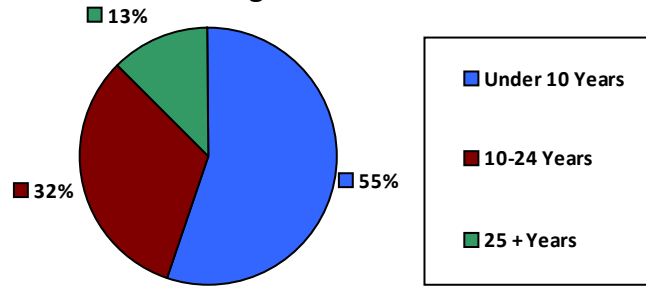
Gender

M	9,289	54.2%
F	7,836	45.8%

Age

<35	2,865	16.7%
35-54	9,190	53.7%
55+	5,072	29.6%

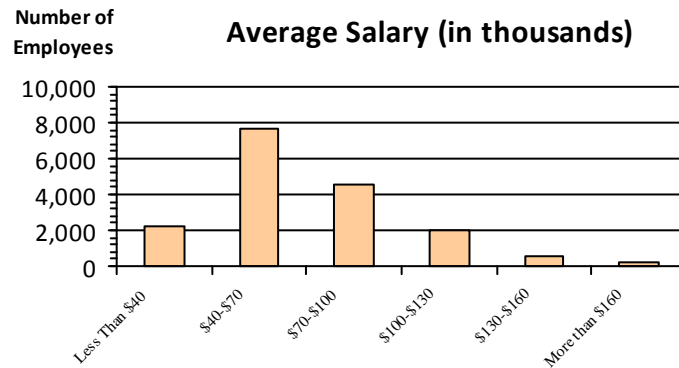
Length of Service



Educational Attainment

HS or Below	4,663	27.2%
Occupational Program	719	4.2%
Between HS and Bachelors	3,682	21.5%
Bachelors + Post Bachelors	4,881	28.5%
Masters and Post Grad	2,639	15.4%
Doctorate and Post Doc	523	3.1%

Average Salary (in thousands)



Type of Employment²

Administrative	5,838	34.1%
Professional	4,153	24.2%
Technical	3,908	22.8%
Clerical	1,175	6.9%
Other White Collar	497	2.9%
Blue Collar	1,555	9.1%

All data unless otherwise noted is provided by the US Office of Personnel Management for the December 2017 reporting period. Non-Federal Workers Data calculated from the US Bureau of Labor Statistics 2017 Annual Averages <https://www.bls.gov/news.release/vet.htm>.¹ Employment categories consistent with the definitions given by the US Office of Personnel Management "Introduction to the Position Classification Standards" (Revised: 2009), available at <https://www.opm.gov/policy-data-oversight/classification-qualifications/classifying-general-schedule-positions/positionclassificationintro.pdf>.²

Who are the Civilian Federal Employees in

Kansas - 2016

Federal Workers in Kansas: 17,143

Percentage Who Are Veterans: 37.59%

Non-Federal Workers in Kansas: 1,396,000¹

Percentage Who Are Veterans: 5.94%¹

Five Largest Federal Employers

Army: 5,576



VA: 4,815



Air Force: 1,013



Agriculture: 954



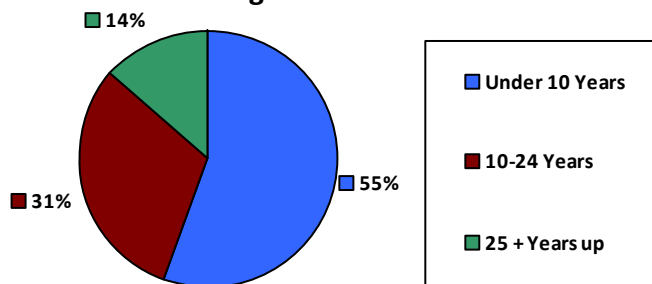
DOT: 761



Race and Ethnicity

White, non-Hispanic	13,434	78.4%
Black/African American, non-Hispanic	1,821	10.6%
Hispanic or Latino	800	4.7%
Asian, non-Hispanic	359	2.1%
Two or more races	279	1.6%
American Indian and Alaska Native	407	2.4%
Native Hawaiian and Other Pacific Islander	41	0.2%

Length of Service



Educational Attainment

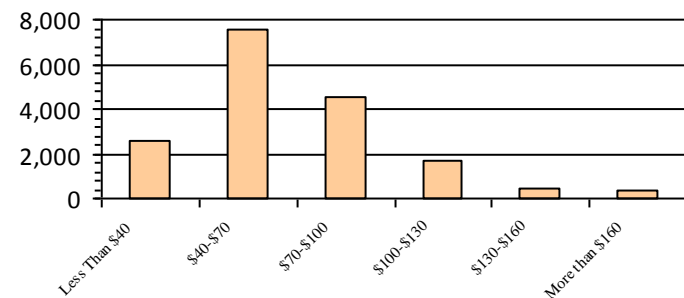
HS or Below	4,723	27.5%
Occupational Program	743	4.3%
Between HS and Bachelors	3,694	21.5%
Bachelors + Post Bachelors	4,875	28.4%
Masters and Post Grad	2,600	15.2%
Doctorate and Post Doc	495	2.9%

Gender

Age

M	9,384	54.8%	<35	2,912	17.0%
			35-54	9,195	53.6%
F	7,753	45.2%	55+	5,036	29.4%

Average Salary (in thousands)



Type of Employment²

Administrative	5,796	33.8%
Professional	4,083	23.8%
Technical	3,882	22.6%
Clerical	1,266	7.4%
Other White Collar	541	3.2%
Blue Collar	1,570	9.2%

All data unless otherwise noted is provided by the US Office of Personnel Management for the December 2016 reporting period. ¹Non-Federal Workers Data calculated from the US Bureau of Labor Statistics 2015 Annual Averages https://www.bls.gov/news.release/archives/vet_03222016.pdf. ²Employment categories consistent with the definitions given by the US Office of Personnel Management "Introduction to the Position Classification Standards" 2009. For a description of the employment categories, refer to <http://www.opm.gov/policy-data-oversight/classification-qualifications/classifying-general-schedule-positions/positionclassificationintro.pdf>.

Who are the Civilian Federal Employees in

Kansas - 2015

Federal Workers in Kansas: 16,985

Percentage Who Are Veterans: 37.52%

Non-Federal Workers in Kansas: 1,406,000¹

Percentage Who Are Veterans: 6.61%¹

Five Largest Federal Employers

Army: 5,551



VA: 4,739



Air Force: 985



Agriculture: 938



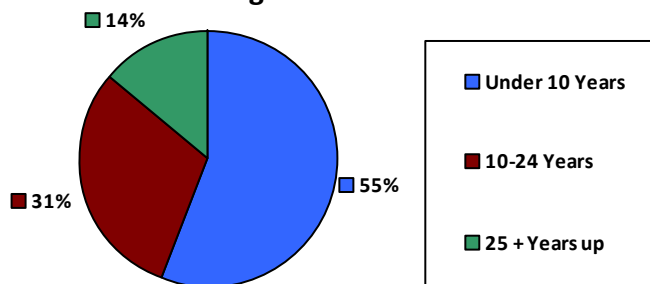
DOT: 755



Race and Ethnicity

White, non-Hispanic	13,376	78.7%
Black/African American, non-Hispanic	1,796	10.6%
Hispanic or Latino	764	4.5%
Asian, non-Hispanic	346	2.0%
Two or more races	251	1.5%
American Indian and Alaska Native	412	2.4%
Native Hawaiian and Other Pacific Islander	40	0.2%

Length of Service



Educational Attainment

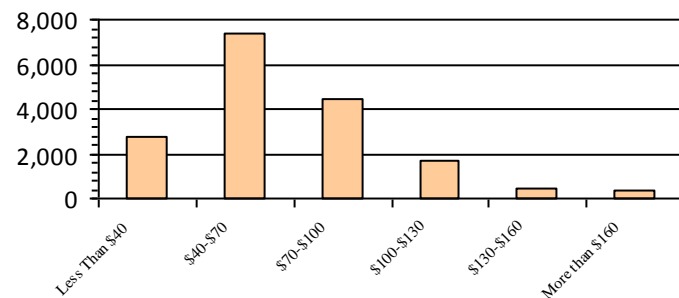
HS or Below	4,646	27.4%
Occupational Program	789	4.6%
Between HS and Bachelors	3,732	22.0%
Bachelors + Post Bachelors	4,835	28.5%
Masters and Post Grad	2,488	14.6%
Doctorate and Post Doc	468	2.8%

Gender

Age

M	9,379	55.2%	<35	2,896	17.0%
			35-54	9,176	54.0%
F	7,606	44.8%	55+	4,913	28.9%

Average Salary (in thousands)



Type of Employment²

Administrative	5,654	33.3%
Professional	4,102	24.1%
Technical	3,809	22.4%
Clerical	1,241	7.3%
Other White Collar	550	3.2%
Blue Collar	1,626	9.6%

All data unless otherwise noted is provided by the US Office of Personnel Management for the December 2015 reporting period. ¹Non-Federal Workers Data calculated from the US Bureau of Labor Statistics 2015 Annual Averages https://www.bls.gov/news.release/archives/vet_03222016.pdf. ²Employment categories consistent with the definitions given by the US Office of Personnel Management "Introduction to the Position Classification Standards" 2009. For a description of the employment categories, refer to <http://www.opm.gov/policy-data-oversight/classification-qualifications/classifying-general-schedule-positions/positionclassificationintro.pdf>.

Who are the Civilian Federal Employees in

Kansas - 2014

Federal Workers in Kansas: 17,063

Percentage Who Are Veterans: 36.94%

Non-Federal Workers in Kansas: 1,411,000¹

Percentage Who Are Veterans: 7.72%¹

Five Largest Federal Employers

Army: 5,589



VA: 4,706



Air Force: 1,070



Agriculture: 918



DOT: 801



Race and Ethnicity

White, non-Hispanic	13,488	79.0%
Black/African American, non-Hispanic	1,793	10.5%
Hispanic or Latino	740	4.3%
Asian, non-Hispanic	345	2.0%
Two or more races	240	1.4%
American Indian and Alaska Native	417	2.4%
Native Hawaiian and Other Pacific Islander	40	0.2%

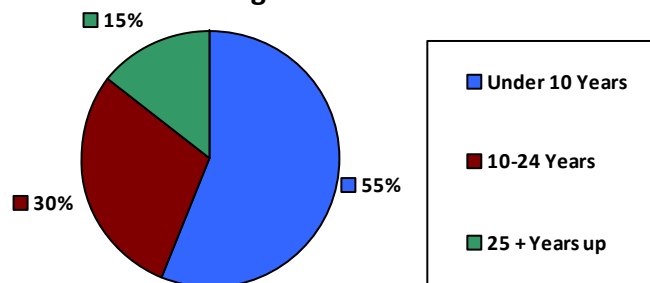
Gender

M	9,501	55.7%
F	7,562	44.3%

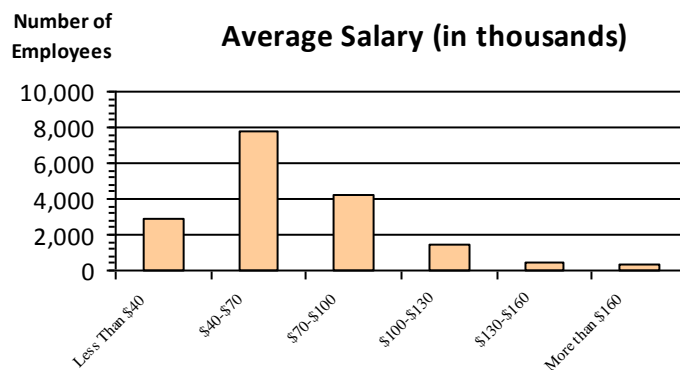
Age

<35	2,937	17.2%
35-54	9,365	54.9%
55+	4,761	27.9%

Length of Service



Average Salary (in thousands)



Educational Attainment

HS or Below	4,868	28.5%
Occupational Program	783	4.6%
Between HS and Bachelors	3,801	22.3%
Bachelors + Post Bachelors	4,790	28.1%
Masters and Post Grad	2,374	13.9%
Doctorate and Post Doc	427	2.5%

Type of Employment²

Administrative	5,610	32.9%
Professional	4,059	23.8%
Technical	3,874	22.7%
Clerical	1,237	7.2%
Other White Collar	539	3.2%
Blue Collar	1,743	10.2%

All data unless otherwise noted is provided by the US Office of Personnel Management for the December 2014 reporting period. ¹Non-Federal Workers Data calculated from the US Bureau of Labor Statistics 2014 Annual Averages https://www.bls.gov/news.release/archives/vet_03182015.pdf. ²Employment categories consistent with the definitions given by the US Office of Personnel Management "Introduction to the Position Classification Standards" 2009. For a description of the employment categories, refer to <http://www.opm.gov/policy-data-oversight/classification-qualifications/classifying-general-schedule-positions/positionclassificationintro.pdf>.

Who are the Civilian Federal Employees in

Kansas - 2013

Federal Workers in Kansas: 17,122

Percentage Who Are Veterans: 36.05%

Non-Federal Workers in Kansas: 1,384,000¹

Percentage Who Are Veterans: 8.02%¹

Five Largest Federal Employers

Army: 5,638



VA: 4,679



Air Force: 1,067



Agriculture: 941



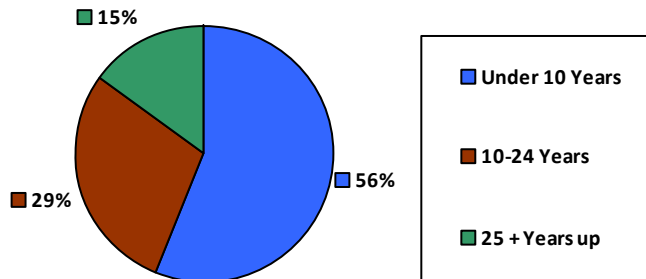
DOT: 786



Race and Ethnicity

White, non-Hispanic	13,643	79.7%
Black/African American, non-Hispanic	1,755	10.2%
Hispanic or Latino	683	4.0%
Asian, non-Hispanic	346	2.0%
Two or more races	221	1.3%
American Indian and Alaska Native	439	2.6%
Native Hawaiian and Other Pacific Islander	35	0.2%

Length of Service



Educational Attainment

HS or Below	4,912	28.7%
Occupational Program	822	4.8%
Between HS and Bachelors	3,833	22.4%
Bachelors + Post Bachelors	4,786	27.9%
Masters and Post Grad	2,313	13.5%
Doctorate and Post Doc	443	2.6%

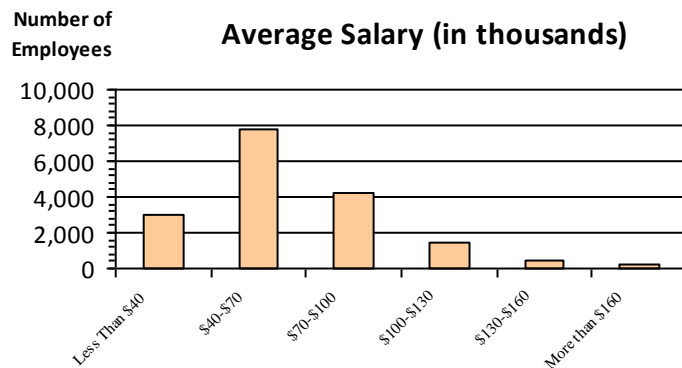
Gender

M	9,547	55.8%
F	7,575	44.2%

Age

<35	2,984	17.4%
35-54	9,412	55.0%
55+	4,726	27.6%

Average Salary (in thousands)



Type of Employment²

Administrative	5,505	32.1%
Professional	4,150	24.2%
Technical	3,906	22.8%
Clerical	1,231	7.2%
Other White Collar	554	3.2%
Blue Collar	1,776	10.4%

All data unless otherwise noted is provided by the US Office of Personnel Management for the December 2013 reporting period. ¹Non-Federal Workers Data calculated from the US Bureau of Labor Statistics 2013 Annual Averages https://www.bls.gov/news.release/archives/vet_03202014.pdf. ²Employment categories consistent with the definitions given by the US Office of Personnel Management "Introduction to the Position Classification Standards" 2009. For a description of the employment categories, refer to <http://www.opm.gov/policy-data-oversight/classification-qualifications/classifying-general-schedule-positions/positionclassificationintro.pdf>.