

Who are the Civilian Federal Employees in

Iowa - 2021

Federal Workers in Iowa: 9,643

Percentage Who Are Veterans: 20.94%

Non-Federal Workers in Iowa: 1,591,000¹

Percentage Who Are Veterans: 6.22%¹

Five Largest Federal Employers

VA: 4,312



Agriculture: 1,995



Army: 1,042



DHS: 376



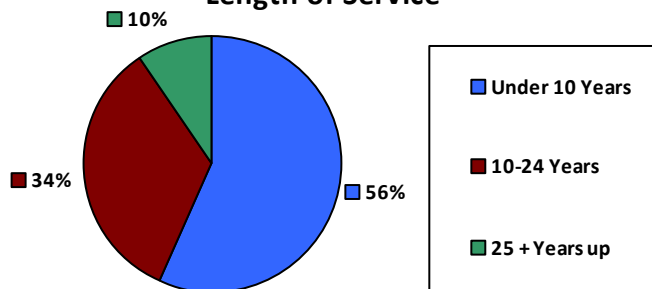
Air Force: 292



Race and Ethnicity

White, non-Hispanic	8,547	88.6%
Black/African American, non-Hispanic	389	4.0%
Hispanic or Latino	304	3.2%
Asian, non-Hispanic	239	2.5%
Two or more races	94	1.0%
American Indian and Alaska Native	54	0.6%
Native Hawaiian and Other Pacific Islander	8	0.1%

Length of Service



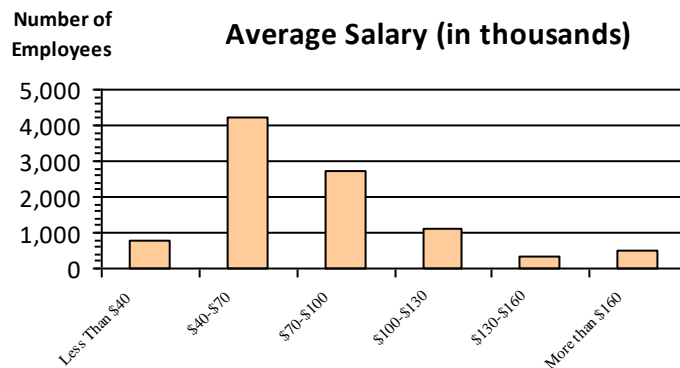
Educational Attainment

HS or Below	2,748	28.5%
Occupational Program	192	2.0%
Between HS and Bachelors	1,836	19.0%
Bachelors + Post Bachelors	3,326	34.5%
Masters and Post Grad	1,126	11.7%
Doctorate and Post Doc	406	4.2%

Gender

Gender			Age		
M	4,890	50.7%	<35	2,078	21.5%
			35-54	5,047	52.3%
F	4,753	49.3%	55+	2,518	26.1%

Average Salary (in thousands)



Type of Employment²

Administrative	3,244	33.6%
Professional	2,227	23.1%
Technical	505	5.2%
Clerical	110	1.1%
Other White Collar	927	9.6%
Blue Collar	950	9.9%

All data unless otherwise noted is provided by the US Office of Personnel Management for the December 2015 reporting period. ¹Non-Federal Workers Data calculated from the US Bureau of Labor Statistics 2015 Annual Averages https://www.bls.gov/news.release/archives/vet_03222016.pdf. ²Employment categories consistent with the definitions given by the US Office of Personnel Management "Introduction to the Position Classification Standards" 2009. For a description of the employment categories, refer to <http://www.opm.gov/policy-data-oversight/classification-qualifications/classifying-general-schedule-positions/positionclassificationintro.pdf>.

Who are the Civilian Federal Employees in

Iowa - 2020

Federal Workers in Iowa: 9,641

Percentage Who Are Veterans: 20.93%

Non-Federal Workers in Iowa: 1,542,000¹

Percentage Who Are Veterans: 6.87%¹

Five Largest Federal Employers

VA: 4,310



Agriculture: 2,025



Army: 1,010



DHS: 383



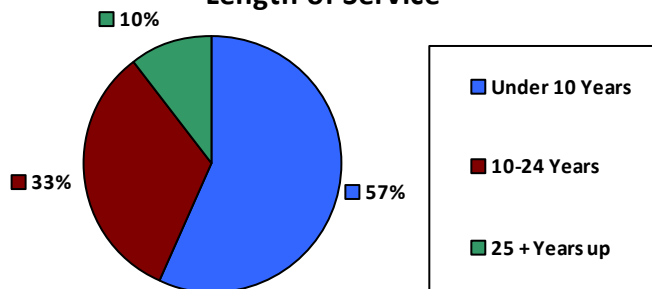
Air Force: 319



Race and Ethnicity

White, non-Hispanic	8,576	88.9%
Black/African American, non-Hispanic	369	3.8%
Hispanic or Latino	295	3.1%
Asian, non-Hispanic	223	2.3%
Two or more races	105	1.1%
American Indian and Alaska Native	50	0.5%
Native Hawaiian and Other Pacific Islander	8	0.1%

Length of Service



Educational Attainment

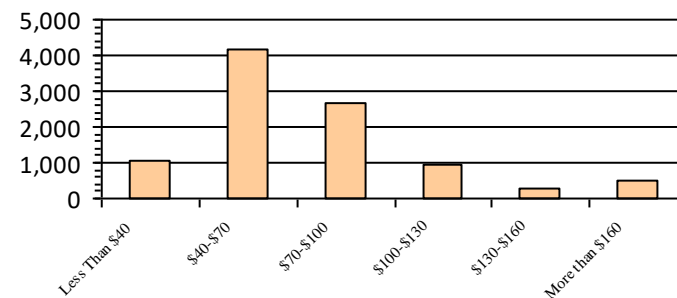
HS or Below	2,804	29.1%
Occupational Program	209	2.2%
Between HS and Bachelors	1,827	18.9%
Bachelors + Post Bachelors	3,307	34.3%
Masters and Post Grad	1,088	11.3%
Doctorate and Post Doc	399	4.1%

Gender

Age

Gender	Count	Percentage	Age Group	Count	Percentage
M	4,908	50.9%	<35	2,230	23.1%
			35-54	4,869	50.5%
F	4,733	49.1%	55+	2,542	26.4%

Average Salary (in thousands)



Type of Employment²

Administrative	2,515	26.1%
Professional	3,178	33.0%
Technical	2,256	23.4%
Clerical	598	6.2%
Other White Collar	127	1.3%
Blue Collar	950	9.9%

All data unless otherwise noted is provided by the US Office of Personnel Management for the December 2015 reporting period. ¹Non-Federal Workers Data calculated from the US Bureau of Labor Statistics 2015 Annual Averages https://www.bls.gov/news.release/archives/vet_03222016.pdf. ²Employment categories consistent with the definitions given by the US Office of Personnel Management "Introduction to the Position Classification Standards" 2009. For a description of the employment categories, refer to <http://www.opm.gov/policy-data-oversight/classification-qualifications/classifying-general-schedule-positions/positionclassificationintro.pdf>.

Who are the Civilian Federal Employees in

Iowa - 2019

Federal Workers in Iowa: 9,390

Percentage Who Are Veterans: 21.03%

Non-Federal Workers in Iowa: 1,676,000¹

Percentage Who Are Veterans: 6.09%¹

Five Largest Federal Employers

VA: 4,124



Agriculture: 1,889



Army: 963



DHS: 413



Air Force: 405



Race and Ethnicity

White, non-Hispanic	8,415	89.6%
Black/African American, non-Hispanic	331	3.5%
Hispanic or Latino	268	2.9%
Asian, non-Hispanic	204	2.2%
Two or more races	108	1.2%
American Indian and Alaska Native	45	0.5%
Native Hawaiian and Other Pacific Islander	8	0.1%

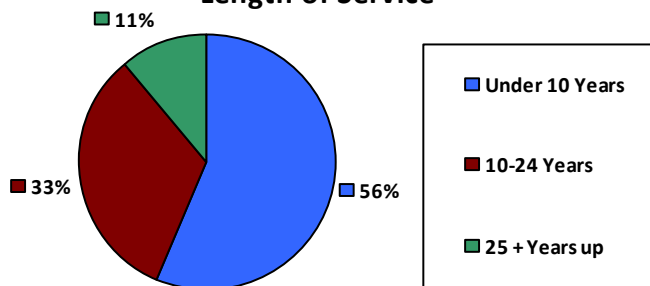
Gender

M	4,839	51.5%
F	4,551	48.5%

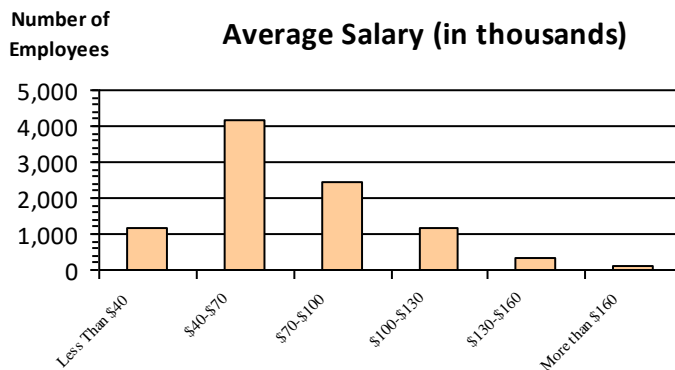
Age

<35	2,132	22.7%
35-54	4,765	50.7%
55+	2,493	26.5%

Length of Service



Average Salary (in thousands)



Educational Attainment

HS or Below	2,580	27.5%
Occupational Program	327	3.5%
Between HS and Bachelors	1,912	20.4%
Bachelors + Post Bachelors	3,133	33.4%
Masters and Post Grad	1,002	10.7%
Doctorate and Post Doc	430	4.6%

Type of Employment²

Administrative	2,428	25.9%
Professional	3,025	32.2%
Technical	2,257	24.0%
Clerical	574	6.1%
Other White Collar	119	1.3%
Blue Collar	968	10.3%

All data unless otherwise noted is provided by the US Office of Personnel Management for the December 2015 reporting period. ¹Non-Federal Workers Data calculated from the US Bureau of Labor Statistics 2015 Annual Averages https://www.bls.gov/news.release/archives/vet_03222016.pdf. ²Employment categories consistent with the definitions given by the US Office of Personnel Management "Introduction to the Position Classification Standards" 2009. For a description of the employment categories, refer to <http://www.opm.gov/policy-data-oversight/classification-qualifications/classifying-general-schedule-positions/positionclassificationintro.pdf>.

Who are the Civilian Federal Employees in

Iowa - 2018

Federal Workers in Iowa: 9,413

Percentage Who Are Veterans: 21.39%

Non-Federal Workers in Iowa: 1,614,000¹

Percentage Who Are Veterans: 6.88%¹

Five Largest Federal Employers

VA: 4,120



Agriculture: 1,857



Army: 991



Air Force: 474



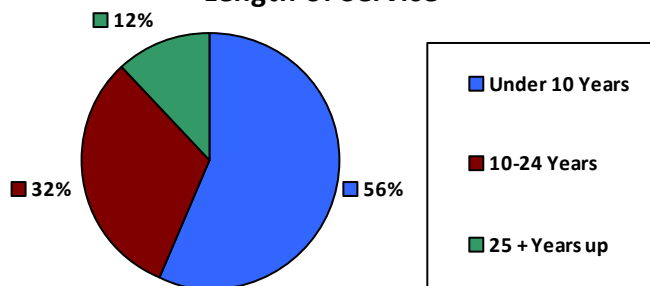
DHS: 383



Race and Ethnicity

White, non-Hispanic	8,475	90.0%
Black/African American, non-Hispanic	330	3.5%
Hispanic or Latino	279	3.0%
Asian, non-Hispanic	186	2.0%
Two or more races	90	1.0%
American Indian and Alaska Native	43	0.5%
Native Hawaiian and Other Pacific Islander	9	0.1%

Length of Service



Educational Attainment

HS or Below	2,613	27.8%
Occupational Program	356	3.8%
Between HS and Bachelors	1,951	20.7%
Bachelors + Post Bachelors	3,132	33.3%
Masters and Post Grad	978	10.4%
Doctorate and Post Doc	377	4.0%

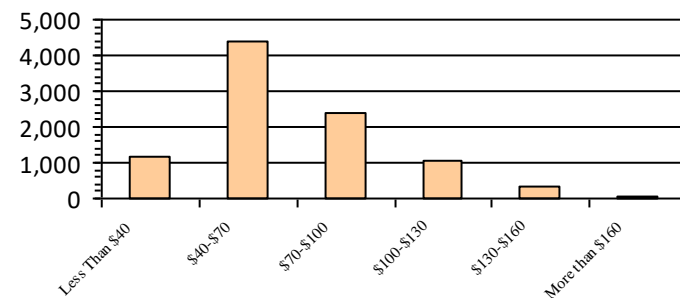
Gender

M	4,892	52.0%
F	4,517	48.0%

Age

<35	2,177	23.1%
35-54	4,724	50.2%
55+	2,512	26.7%

Average Salary (in thousands)



Type of Employment²

Administrative	2,453	26.1%
Professional	2,929	31.1%
Technical	2,312	24.6%
Clerical	583	6.2%
Other White Collar	104	1.1%
Blue Collar	1,012	10.8%

All data unless otherwise noted is provided by the US Office of Personnel Management for the December 2018 reporting period. ¹Non-Federal Workers Data calculated from the US Bureau of Labor Statistics 2018 Annual Averages www.bls.gov/news.release/pdf/vet.pdf. ²Employment categories consistent with the definitions given by the US Office of Personnel Management "Introduction to the Position Classification Standards" 2009. For a description of the employment categories, refer to www.opm.gov/policy-data-oversight/classification-qualifications/classifying-general-schedule-positions/positionclassificationintro.pdf.

Who are the Civilian Federal Employees in

Iowa - 2017

Federal Workers in Iowa: 9,370

Percentage Who Are Veterans: 21.42%

Non-Federal Workers in Iowa: 1,590,000¹

Percentage Who Are Veterans: 7.29%²

Five Largest Federal Employers

VA: 4,024



Agriculture: 1,944



Army: 933



Air Force: 456



DHS: 381



Race and Ethnicity

White, non-Hispanic	8,475	90.4%
Black/African American, non-Hispanic	315	3.4%
Hispanic or Latino	252	2.7%
Asian, non-Hispanic	188	2.0%
Two or more races	75	0.8%
American Indian and Alaska Native	54	0.6%
Native Hawaiian and Other Pacific Islander	11	0.1%

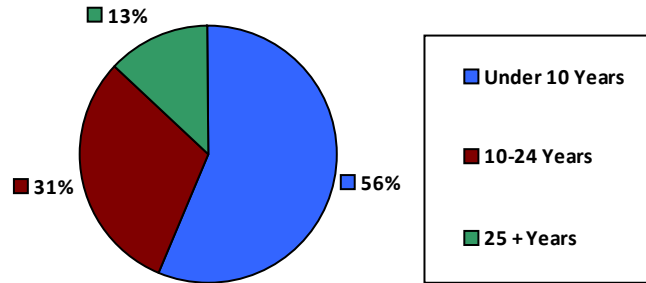
Gender

M	4,865	51.9%
F	4,501	48.1%

Age

<35	2,145	22.9%
35-54	4,719	50.4%
55+	2,506	26.7%

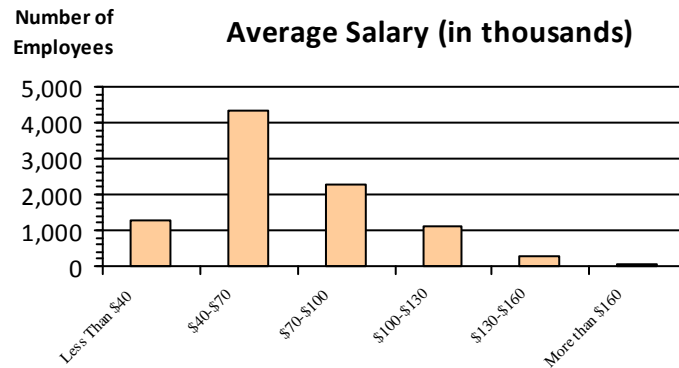
Length of Service



Educational Attainment

HS or Below	2,560	27.3%
Occupational Program	375	4.0%
Between HS and Bachelors	1,948	20.8%
Bachelors + Post Bachelors	3,142	33.5%
Masters and Post Grad	969	10.3%
Doctorate and Post Doc	370	3.9%

Average Salary (in thousands)



Type of Employment²

Administrative	2,442	26.1%
Professional	2,941	31.4%
Technical	2,347	25.0%
Clerical	574	6.1%
Other White Collar	100	1.1%
Blue Collar	966	10.3%

All data unless otherwise noted is provided by the US Office of Personnel Management for the December 2017 reporting period. Non-Federal Workers Data calculated from the US Bureau of Labor Statistics 2017 Annual Averages <https://www.bls.gov/news.release/vet.htm>.¹ Employment categories consistent with the definitions given by the US Office of Personnel Management "Introduction to the Position Classification Standards" (Revised: 2009), available at <https://www.opm.gov/policy-data-oversight/classification-qualifications/classifying-general-schedule-positions/positionclassificationintro.pdf>.²

Who are the Civilian Federal Employees in

Iowa - 2016

Federal Workers in Iowa: 9,293

Percentage Who Are Veterans: 21.42%

Non-Federal Workers in Iowa: 1,617,000¹

Percentage Who Are Veterans: 7.05%¹

Five Largest Federal Employers

VA: 3,846



Agriculture: 2,010



Army: 934



Air Force: 465



DHS: 356



Race and Ethnicity

White, non-Hispanic	8,459	91.0%
Black/African American, non-Hispanic	301	3.2%
Hispanic or Latino	227	2.4%
Asian, non-Hispanic	167	1.8%
Two or more races	80	0.9%
American Indian and Alaska Native	52	0.6%
Native Hawaiian and Other Pacific Islander	7	0.1%

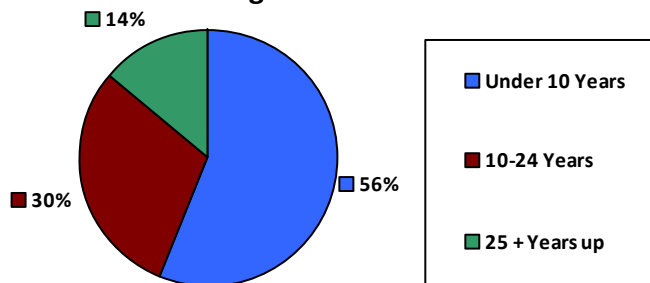
Gender

M	4,909	52.8%
F	4,383	47.2%

Age

<35	2,144	23.1%
35-54	4,661	50.2%
55+	2,488	26.8%

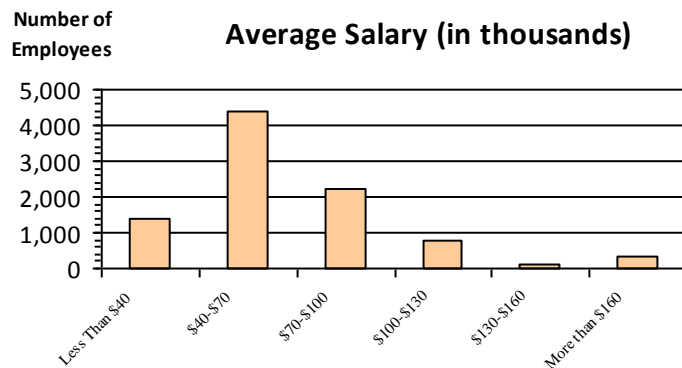
Length of Service



Educational Attainment

HS or Below	2,603	28.0%
Occupational Program	382	4.1%
Between HS and Bachelors	1,936	20.8%
Bachelors + Post Bachelors	3,133	33.7%
Masters and Post Grad	917	9.9%
Doctorate and Post Doc	317	3.4%

Average Salary (in thousands)



Type of Employment²

Administrative	2,386	25.7%
Professional	2,861	30.8%
Technical	2,397	25.8%
Clerical	523	5.6%
Other White Collar	114	1.2%
Blue Collar	1,012	10.9%

All data unless otherwise noted is provided by the US Office of Personnel Management for the December 2016 reporting period. ¹Non-Federal Workers Data calculated from the US Bureau of Labor Statistics 2015 Annual Averages https://www.bls.gov/news.release/archives/vet_03222016.pdf. ²Employment categories consistent with the definitions given by the US Office of Personnel Management "Introduction to the Position Classification Standards" 2009. For a description of the employment categories, refer to <http://www.opm.gov/policy-data-oversight/classification-qualifications/classifying-general-schedule-positions/positionclassificationintro.pdf>.

Who are the Civilian Federal Employees in

Iowa - 2015

Federal Workers in Iowa: 9,233

Percentage Who Are Veterans: 21.28%

Non-Federal Workers in Iowa: 1,609,000¹

Percentage Who Are Veterans: 8.02%¹

Five Largest Federal Employers

VA: 3,817



Agriculture: 1,998



Army: 926



Air Force: 483



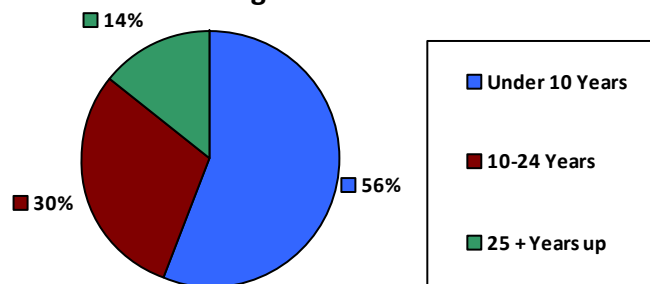
DHS: 330



Race and Ethnicity

White, non-Hispanic	8,452	91.5%
Black/African American, non-Hispanic	291	3.2%
Hispanic or Latino	202	2.2%
Asian, non-Hispanic	157	1.7%
Two or more races	71	0.8%
American Indian and Alaska Native	52	0.6%
Native Hawaiian and Other Pacific Islander	8	0.1%

Length of Service



Educational Attainment

HS or Below	2,618	28.4%
Occupational Program	396	4.3%
Between HS and Bachelors	1,856	20.1%
Bachelors + Post Bachelors	3,166	34.3%
Masters and Post Grad	897	9.7%
Doctorate and Post Doc	292	3.2%

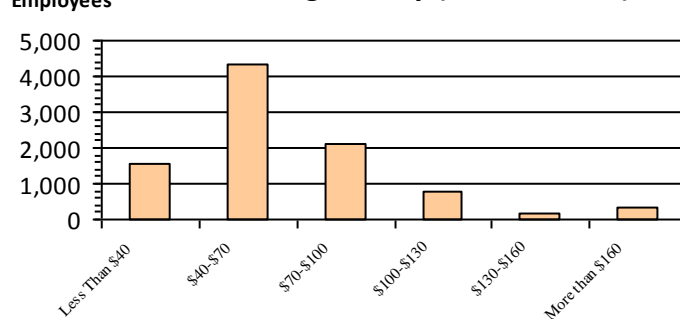
Gender

M	4,890	53.0%
F	4,343	47.0%

Age

<35	2,094	22.7%
35-54	4,699	50.9%
55+	2,440	26.4%

Average Salary (in thousands)



Type of Employment²

Administrative	2,343	25.4%
Professional	2,847	30.8%
Technical	2,446	26.5%
Clerical	494	5.3%
Other White Collar	92	1.0%
Blue Collar	1,010	10.9%

All data unless otherwise noted is provided by the US Office of Personnel Management for the December 2015 reporting period. ¹Non-Federal Workers Data calculated from the US Bureau of Labor Statistics 2015 Annual Averages https://www.bls.gov/news.release/archives/vet_03222016.pdf. ²Employment categories consistent with the definitions given by the US Office of Personnel Management "Introduction to the Position Classification Standards" 2009. For a description of the employment categories, refer to <http://www.opm.gov/policy-data-oversight/classification-qualifications/classifying-general-schedule-positions/positionclassificationintro.pdf>.

Who are the Civilian Federal Employees in

Iowa - 2014

Federal Workers in Iowa: 9,124

Percentage Who Are Veterans: 21.18%

Non-Federal Workers in Iowa: 1,597,000¹

Percentage Who Are Veterans: 7.45%¹

Five Largest Federal Employers

VA: 3,646



Agriculture: 1,985



Army: 950



Air Force: 447



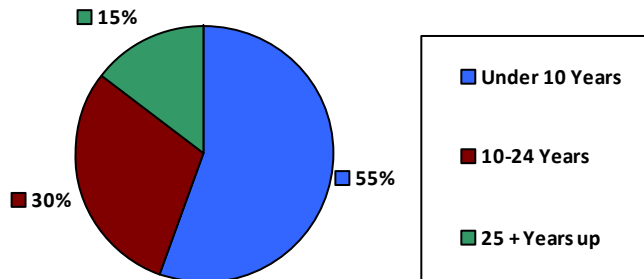
DHS: 349



Race and Ethnicity

White, non-Hispanic	8,400	92.1%
Black/African American, non-Hispanic	264	2.9%
Hispanic or Latino	184	2.0%
Asian, non-Hispanic	151	1.7%
Two or more races	62	0.7%
American Indian and Alaska Native	54	0.6%
Native Hawaiian and Other Pacific Islander	9	0.1%

Length of Service



Educational Attainment

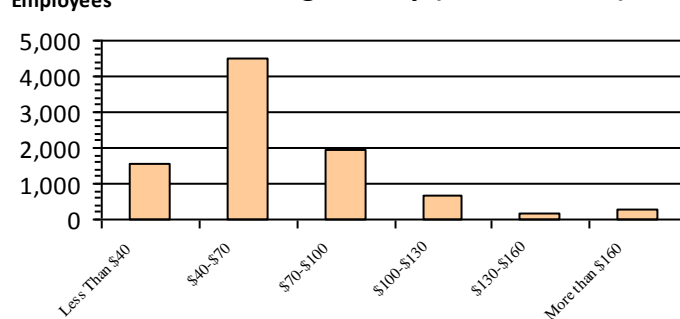
HS or Below	2,685	29.4%
Occupational Program	381	4.2%
Between HS and Bachelors	1,858	20.4%
Bachelors + Post Bachelors	3,043	33.3%
Masters and Post Grad	864	9.5%
Doctorate and Post Doc	281	3.1%

Gender

Age

Gender	Count	Percentage	Age Group	Count	Percentage
M	4,905	53.8%	<35	2,070	22.7%
			35-54	4,659	51.1%
F	4,219	46.2%	55+	2,395	26.2%

Average Salary (in thousands)



Type of Employment²

Administrative	2,357	25.8%
Professional	2,704	29.6%
Technical	2,474	27.1%
Clerical	487	5.3%
Other White Collar	109	1.2%
Blue Collar	993	10.9%

All data unless otherwise noted is provided by the US Office of Personnel Management for the December 2014 reporting period. ¹Non-Federal Workers Data calculated from the US Bureau of Labor Statistics 2014 Annual Averages https://www.bls.gov/news.release/archives/vet_03182015.pdf. ²Employment categories consistent with the definitions given by the US Office of Personnel Management "Introduction to the Position Classification Standards" 2009. For a description of the employment categories, refer to <http://www.opm.gov/policy-data-oversight/classification-qualifications/classifying-general-schedule-positions/positionclassificationintro.pdf>.

Who are the Civilian Federal Employees in

Iowa - 2013

Federal Workers in Iowa: 9,182

Percentage Who Are Veterans: 20.21%

Non-Federal Workers in Iowa: 1,568,000¹

Percentage Who Are Veterans: 7.78%¹

Five Largest Federal Employers

VA: 3,561



Agriculture: 2,080



Army: 938



Air Force: 450



DHS: 376



Race and Ethnicity

White, non-Hispanic	8,509	92.7%
Black/African American, non-Hispanic	245	2.7%
Hispanic or Latino	165	1.8%
Asian, non-Hispanic	145	1.6%
Two or more races	55	0.6%
American Indian and Alaska Native	57	0.6%
Native Hawaiian and Other Pacific Islander	6	0.1%

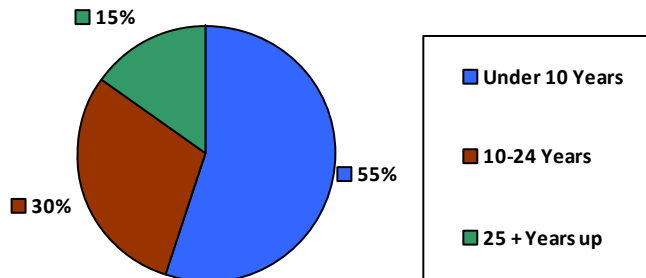
Gender

M	4,890	53.3%
F	4,292	46.7%

Age

<35	2,108	23.0%
35-54	4,679	51.0%
55+	2,395	26.1%

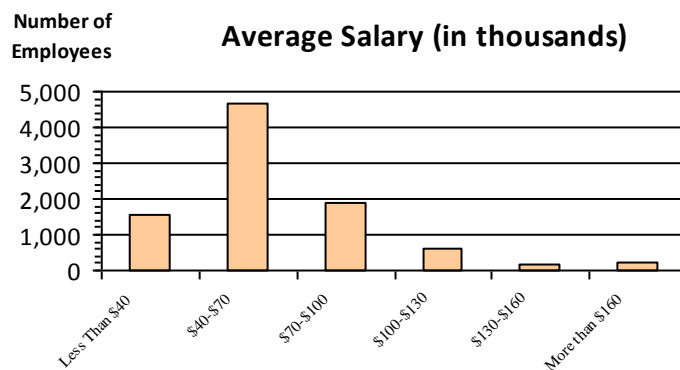
Length of Service



Educational Attainment

HS or Below	2,721	29.6%
Occupational Program	404	4.4%
Between HS and Bachelors	1,906	20.8%
Bachelors + Post Bachelors	3,027	33.0%
Masters and Post Grad	830	9.0%
Doctorate and Post Doc	281	3.1%

Average Salary (in thousands)



Type of Employment²

Administrative	2,328	25.4%
Professional	2,678	29.2%
Technical	2,457	26.8%
Clerical	543	5.9%
Other White Collar	141	1.5%
Blue Collar	1,035	11.3%

All data unless otherwise noted is provided by the US Office of Personnel Management for the December 2013 reporting period. ¹Non-Federal Workers Data calculated from the US Bureau of Labor Statistics 2013 Annual Averages https://www.bls.gov/news.release/archives/vet_03202014.pdf. ²Employment categories consistent with the definitions given by the US Office of Personnel Management "Introduction to the Position Classification Standards" 2009. For a description of the employment categories, refer to <http://www.opm.gov/policy-data-oversight/classification-qualifications/classifying-general-schedule-positions/positionclassificationintro.pdf>.