

Who are the Civilian Federal Employees in

Illinois - 2021

Federal Workers in Illinois: 50,146

Percentage Who Are Veterans: 26.68%

Non-Federal Workers in Illinois: 5,820,000¹

Percentage Who Are Veterans: 3.54%¹

Five Largest Federal Employers

VA: 14,253



Army: 7,044



DHS: 4,997



Air Force: 3,675



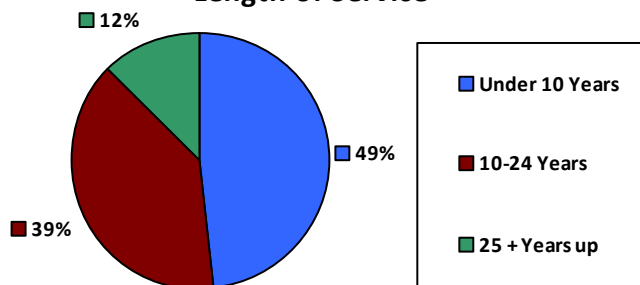
Justice: 3,635



Race and Ethnicity

White, non-Hispanic	31,359	62.5%
Black/African American, non-Hispanic	9,957	19.9%
Hispanic or Latino	3,992	8.0%
Asian, non-Hispanic	3,564	7.1%
Two or more races	695	1.4%
American Indian and Alaska Native	317	0.6%
Native Hawaiian and Other Pacific Islander	104	0.2%

Length of Service



Educational Attainment

HS or Below	12,190	24.3%
Occupational Program	1,027	2.0%
Between HS and Bachelors	8,978	17.9%
Bachelors + Post Bachelors	17,825	35.5%
Masters and Post Grad	8,703	17.3%
Doctorate and Post Doc	1,377	2.7%

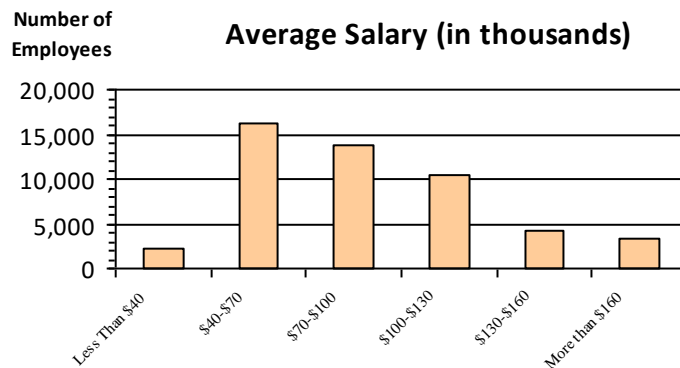
Gender

M	26,323	52.5%
F	23,822	47.5%

Age

<35	8,967	17.9%
35-54	26,986	53.8%
55+	14,193	28.3%

Average Salary (in thousands)



Type of Employment²

Administrative	13,869	27.7%
Professional	8,271	16.5%
Technical	2,561	5.1%
Clerical	1,578	3.1%
Other White Collar	3,336	6.7%
Blue Collar	3,574	7.1%

All data unless otherwise noted is provided by the US Office of Personnel Management for the December 2015 reporting period. ¹Non-Federal Workers Data calculated from the US Bureau of Labor Statistics 2015 Annual Averages https://www.bls.gov/news.release/archives/vet_03222016.pdf. ²Employment categories consistent with the definitions given by the US Office of Personnel Management "Introduction to the Position Classification Standards" 2009. For a description of the employment categories, refer to <http://www.opm.gov/policy-data-oversight/classification-qualifications/classifying-general-schedule-positions/positionclassificationintro.pdf>.

Who are the Civilian Federal Employees in

Illinois - 2020

Federal Workers in Illinois: 50,713

Percentage Who Are Veterans: 27.13%

Non-Federal Workers in Illinois: 5,605,000¹

Percentage Who Are Veterans: 4.10%¹

Five Largest Federal Employers

VA: 14,070



Army: 7,254



DHS: 4,973



Air Force: 3,724



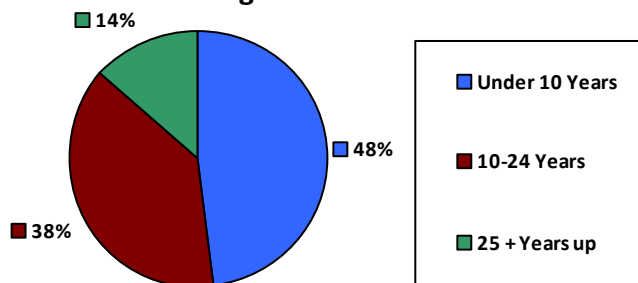
Justice: 3,597



Race and Ethnicity

White, non-Hispanic	31,741	62.6%
Black/African American, non-Hispanic	10,308	20.3%
Hispanic or Latino	3,953	7.8%
Asian, non-Hispanic	3,440	6.8%
Two or more races	680	1.3%
American Indian and Alaska Native	306	0.6%
Native Hawaiian and Other Pacific Islander	112	0.2%

Length of Service



Educational Attainment

HS or Below	12,331	24.3%
Occupational Program	1,065	2.1%
Between HS and Bachelors	9,305	18.3%
Bachelors + Post Bachelors	17,969	35.4%
Masters and Post Grad	8,645	17.0%
Doctorate and Post Doc	1,357	2.7%

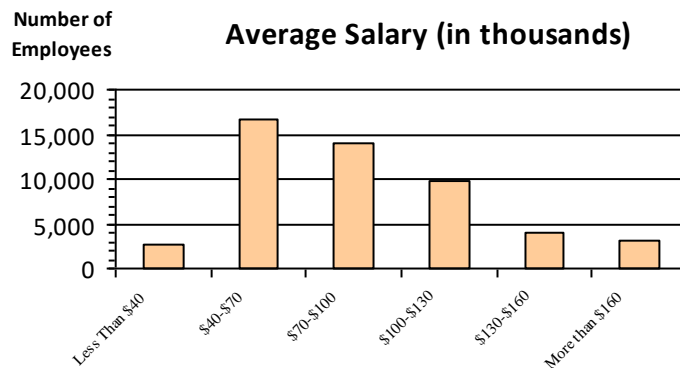
Gender

M	26,741	52.7%
F	23,971	47.3%

Age

<35	9,296	18.3%
35-54	26,908	53.1%
55+	14,509	28.6%

Average Salary (in thousands)



Type of Employment²

Administrative	20,694	40.8%
Professional	13,696	27.0%
Technical	8,424	16.6%
Clerical	2,704	5.3%
Other White Collar	1,581	3.1%
Blue Collar	3,574	7.0%

All data unless otherwise noted is provided by the US Office of Personnel Management for the December 2015 reporting period. ¹Non-Federal Workers Data calculated from the US Bureau of Labor Statistics 2015 Annual Averages https://www.bls.gov/news.release/archives/vet_03222016.pdf. ²Employment categories consistent with the definitions given by the US Office of Personnel Management "Introduction to the Position Classification Standards" 2009. For a description of the employment categories, refer to <http://www.opm.gov/policy-data-oversight/classification-qualifications/classifying-general-schedule-positions/positionclassificationintro.pdf>.

Who are the Civilian Federal Employees in

Illinois - 2019

Federal Workers in Illinois: 49,550

Percentage Who Are Veterans: 27.65%

Non-Federal Workers in Illinois: 6,109,000¹

Percentage Who Are Veterans: 4.34%¹

Five Largest Federal Employers

VA: 13,547



Army: 7,020



DHS: 5,095



Justice: 3,589



Air Force: 3,573



Race and Ethnicity

White, non-Hispanic	31,012	62.6%
Black/African American, non-Hispanic	10,258	20.7%
Hispanic or Latino	3,802	7.7%
Asian, non-Hispanic	3,230	6.5%
Two or more races	643	1.3%
American Indian and Alaska Native	293	0.6%
Native Hawaiian and Other Pacific Islander	107	0.2%

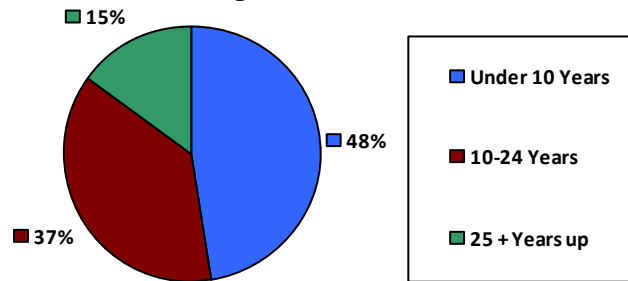
Gender

M	26,261	53.0%
F	23,288	47.0%

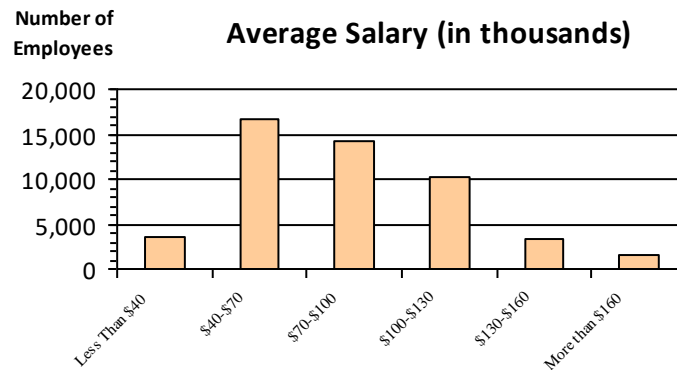
Age

<35	8,874	17.9%
35-54	26,195	52.9%
55+	14,481	29.2%

Length of Service



Average Salary (in thousands)



Educational Attainment

HS or Below	11,251	22.7%
Occupational Program	1,537	3.1%
Between HS and Bachelors	9,576	19.3%
Bachelors + Post Bachelors	17,539	35.4%
Masters and Post Grad	8,241	16.6%
Doctorate and Post Doc	1,364	2.8%

Type of Employment²

Administrative	20,092	40.5%
Professional	13,138	26.5%
Technical	8,285	16.7%
Clerical	2,946	5.9%
Other White Collar	1,504	3.0%
Blue Collar	3,541	7.1%

All data unless otherwise noted is provided by the US Office of Personnel Management for the December 2015 reporting period. ¹Non-Federal Workers Data calculated from the US Bureau of Labor Statistics 2015 Annual Averages https://www.bls.gov/news.release/archives/vet_03222016.pdf. ²Employment categories consistent with the definitions given by the US Office of Personnel Management "Introduction to the Position Classification Standards" 2009. For a description of the employment categories, refer to <http://www.opm.gov/policy-data-oversight/classification-qualifications/classifying-general-schedule-positions/positionclassificationintro.pdf>.

Who are the Civilian Federal Employees in

Illinois - 2018

Federal Workers in Illinois: 48,860

Percentage Who Are Veterans: 27.80%

Non-Federal Workers in Illinois: 6,114,000¹

Percentage Who Are Veterans: 4.35%¹

Five Largest Federal Employers

VA: 13,334



Army: 6,905



DHS: 4,929



Air Force: 3,516



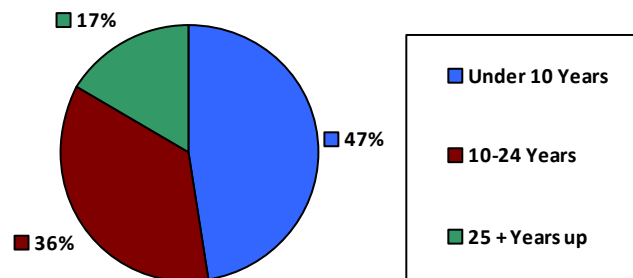
Justice: 3,498



Race and Ethnicity

White, non-Hispanic	30,854	63.1%
Black/African American, non-Hispanic	10,158	20.8%
Hispanic or Latino	3,630	7.4%
Asian, non-Hispanic	3,078	6.3%
Two or more races	597	1.2%
American Indian and Alaska Native	290	0.6%
Native Hawaiian and Other Pacific Islander	94	0.2%

Length of Service



Educational Attainment

HS or Below	10,329	21.1%
Occupational Program	1,611	3.3%
Between HS and Bachelors	9,934	20.3%
Bachelors + Post Bachelors	17,551	35.9%
Masters and Post Grad	8,083	16.5%
Doctorate and Post Doc	1,297	2.7%

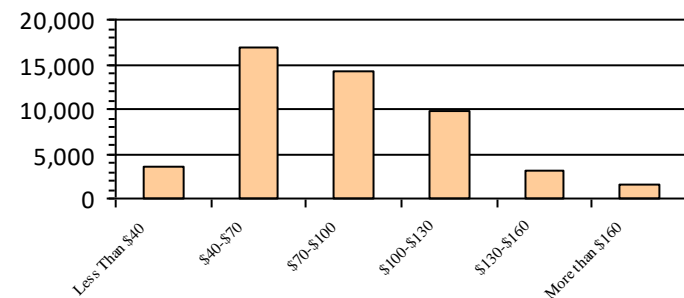
Gender

M	26,047	53.3%
F	22,809	46.7%

Age

<35	8,668	17.7%
35-54	25,796	52.8%
55+	14,396	29.5%

Average Salary (in thousands)



Type of Employment²

Administrative	19,765	40.4%
Professional	13,005	26.6%
Technical	8,341	17.1%
Clerical	2,839	5.8%
Other White Collar	1,322	2.7%
Blue Collar	3,540	7.2%

All data unless otherwise noted is provided by the US Office of Personnel Management for the December 2018 reporting period. ¹Non-Federal Workers Data calculated from the US Bureau of Labor Statistics 2018 Annual Averages www.bls.gov/news.release/pdf/vet.pdf. ²Employment categories consistent with the definitions given by the US Office of Personnel Management "Introduction to the Position Classification Standards" 2009. For a description of the employment categories, refer to www.opm.gov/policy-data-oversight/classification-qualifications/classifying-general-schedule-positions/positionclassificationintro.pdf.

Who are the Civilian Federal Employees in

Illinois - 2017

Federal Workers in Illinois: 48,847

Percentage Who Are Veterans: 27.91%

Non-Federal Workers in Illinois: 6,046,000¹

Percentage Who Are Veterans: 4.91%²

Five Largest Federal Employers

VA: 13,007



Army: 6,896



DHS: 4,941



Air Force: 3,465



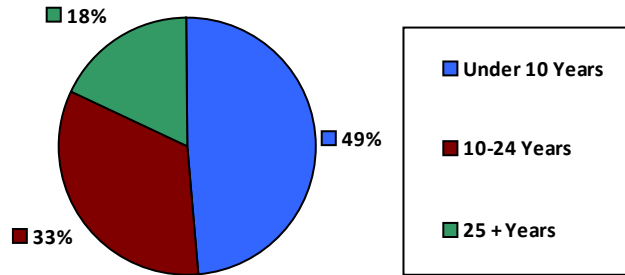
Justice: 3,412



Race and Ethnicity

White, non-Hispanic	31,210	63.9%
Black/African American, non-Hispanic	10,191	20.9%
Hispanic or Latino	3,529	7.2%
Asian, non-Hispanic	2,970	6.1%
Two or more races	548	1.1%
American Indian and Alaska Native	308	0.6%
Native Hawaiian and Other Pacific Islander	87	0.2%

Length of Service



Educational Attainment

HS or Below	10,200	20.9%
Occupational Program	1,657	3.4%
Between HS and Bachelors	10,163	20.8%
Bachelors + Post Bachelors	17,506	35.8%
Masters and Post Grad	8,024	16.4%
Doctorate and Post Doc	1,245	2.5%

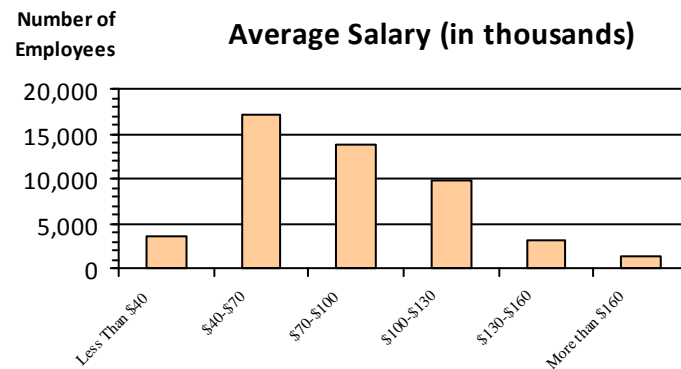
Gender

M	26,116	53.5%
F	22,729	46.5%

Age

<35	8,786	18.0%
35-54	25,556	52.3%
55+	14,505	29.7%

Average Salary (in thousands)



Type of Employment²

Administrative	19,714	40.4%
Professional	12,912	26.4%
Technical	8,454	17.3%
Clerical	2,874	5.9%
Other White Collar	1,276	2.6%
Blue Collar	3,610	7.4%

All data unless otherwise noted is provided by the US Office of Personnel Management for the December 2017 reporting period. Non-Federal Workers Data calculated from the US Bureau of Labor Statistics 2017 Annual Averages <https://www.bls.gov/news.release/vet.htm>.¹ Employment categories consistent with the definitions given by the US Office of Personnel Management "Introduction to the Position Classification Standards" (Revised: 2009), available at <https://www.opm.gov/policy-data-oversight/classification-qualifications/classifying-general-schedule-positions/positionclassificationintro.pdf>.²

Who are the Civilian Federal Employees in

Illinois - 2016

Federal Workers in Illinois: 49,366

Percentage Who Are Veterans: 27.80%

Non-Federal Workers in Illinois: 6,102,000¹

Percentage Who Are Veterans: 5.08%¹

Five Largest Federal Employers

VA: 12,880



Army: 6,967



DHS: 4,962



Air Force: 3,470



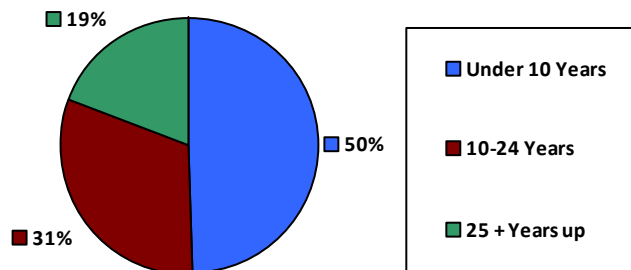
Justice: 3,464



Race and Ethnicity

White, non-Hispanic	31,815	64.4%
Black/African American, non-Hispanic	10,361	21.0%
Hispanic or Latino	3,416	6.9%
Asian, non-Hispanic	2,868	5.8%
Two or more races	502	1.0%
American Indian and Alaska Native	319	0.6%
Native Hawaiian and Other Pacific Islander	83	0.2%

Length of Service



Educational Attainment

HS or Below	10,390	21.0%
Occupational Program	1,762	3.6%
Between HS and Bachelors	10,427	21.1%
Bachelors + Post Bachelors	17,610	35.7%
Masters and Post Grad	7,947	16.1%
Doctorate and Post Doc	1,196	2.4%

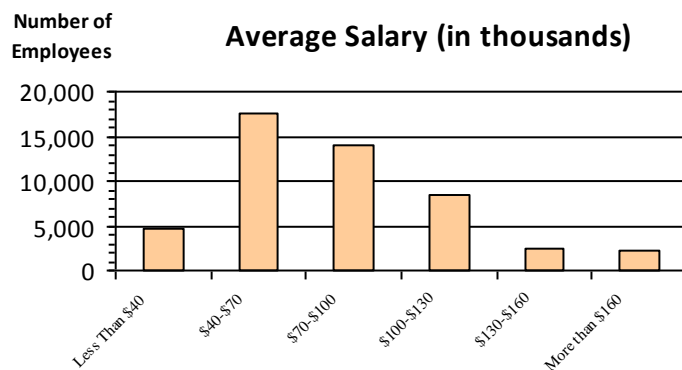
Gender

M	26,404	53.5%
F	22,947	46.5%

Age

<35	9,244	18.7%
35-54	25,687	52.0%
55+	14,435	29.2%

Average Salary (in thousands)



Type of Employment²

Administrative	19,811	40.1%
Professional	12,919	26.2%
Technical	8,433	17.1%
Clerical	3,181	6.4%
Other White Collar	1,312	2.7%
Blue Collar	3,701	7.5%

All data unless otherwise noted is provided by the US Office of Personnel Management for the December 2016 reporting period. ¹Non-Federal Workers Data calculated from the US Bureau of Labor Statistics 2015 Annual Averages https://www.bls.gov/news.release/archives/vet_03222016.pdf. ²Employment categories consistent with the definitions given by the US Office of Personnel Management "Introduction to the Position Classification Standards" 2009. For a description of the employment categories, refer to <http://www.opm.gov/policy-data-oversight/classification-qualifications/classifying-general-schedule-positions/positionclassificationintro.pdf>.

Who are the Civilian Federal Employees in

Illinois - 2015

Federal Workers in Illinois: 49,163

Percentage Who Are Veterans: 27.54%

Non-Federal Workers in Illinois: 6,035,000¹

Percentage Who Are Veterans: 5.32%¹

Five Largest Federal Employers

VA: 12,834



Army: 6,805



DHS: 4,651



Air Force: 3,537



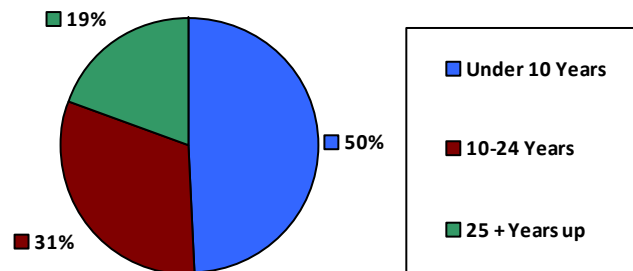
Justice: 3,454



Race and Ethnicity

White, non-Hispanic	32,021	65.1%
Black/African American, non-Hispanic	10,237	20.8%
Hispanic or Latino	3,223	6.6%
Asian, non-Hispanic	2,797	5.7%
Two or more races	475	1.0%
American Indian and Alaska Native	327	0.7%
Native Hawaiian and Other Pacific Islander	83	0.2%

Length of Service



Educational Attainment

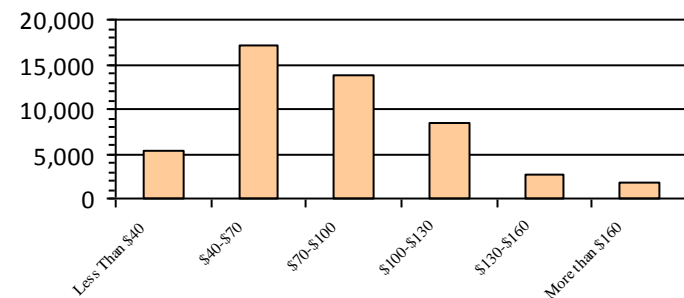
HS or Below	10,474	21.3%
Occupational Program	1,824	3.7%
Between HS and Bachelors	10,355	21.1%
Bachelors + Post Bachelors	17,577	35.7%
Masters and Post Grad	7,753	15.8%
Doctorate and Post Doc	1,141	2.3%

Gender

Age

Gender	Count	Percentage	Age Group	Count	Percentage
M	26,233	53.4%	<35	9,402	19.1%
			35-54	25,535	51.9%
F	22,930	46.6%	55+	14,226	28.9%

Average Salary (in thousands)



Type of Employment²

Administrative	19,713	40.1%
Professional	12,775	26.0%
Technical	8,704	17.7%
Clerical	2,908	5.9%
Other White Collar	1,359	2.8%
Blue Collar	3,697	7.5%

All data unless otherwise noted is provided by the US Office of Personnel Management for the December 2015 reporting period. ¹Non-Federal Workers Data calculated from the US Bureau of Labor Statistics 2015 Annual Averages https://www.bls.gov/news.release/archives/vet_03222016.pdf. ²Employment categories consistent with the definitions given by the US Office of Personnel Management "Introduction to the Position Classification Standards" 2009. For a description of the employment categories, refer to <http://www.opm.gov/policy-data-oversight/classification-qualifications/classifying-general-schedule-positions/positionclassificationintro.pdf>.

Who are the Civilian Federal Employees in

Illinois - 2014

Federal Workers in Illinois: 49,143

Percentage Who Are Veterans: 27.17%

Non-Federal Workers in Illinois: 5,985,000¹

Percentage Who Are Veterans: 5.31%¹

Five Largest Federal Employers

VA: 12,653



Army: 6,938



DHS: 4,737



Air Force: 3,589



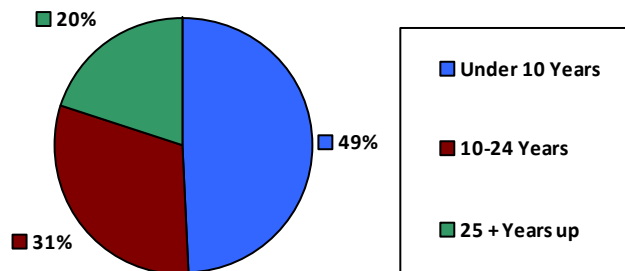
Justice: 3,319



Race and Ethnicity

White, non-Hispanic	32,203	65.5%
Black/African American, non-Hispanic	10,301	21.0%
Hispanic or Latino	3,116	6.3%
Asian, non-Hispanic	2,689	5.5%
Two or more races	431	0.9%
American Indian and Alaska Native	328	0.7%
Native Hawaiian and Other Pacific Islander	75	0.2%

Length of Service



Educational Attainment

HS or Below	10,669	21.7%
Occupational Program	1,864	3.8%
Between HS and Bachelors	10,590	21.5%
Bachelors + Post Bachelors	17,379	35.4%
Masters and Post Grad	7,489	15.2%
Doctorate and Post Doc	1,113	2.3%

Gender

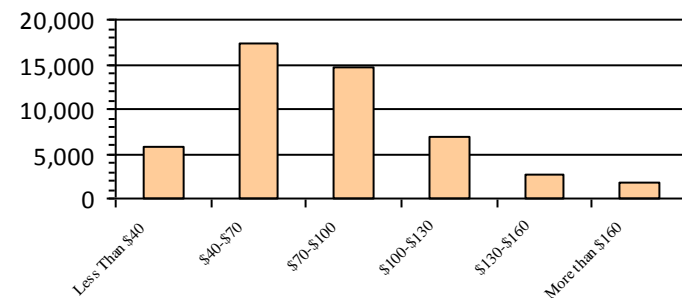
M	26,123	53.2%
F	23,020	46.8%

Age

<35	9,513	19.4%
35-54	25,556	52.0%
55+	14,074	28.6%

Number of Employees

Average Salary (in thousands)



Type of Employment²

Administrative	19,838	40.4%
Professional	12,587	25.6%
Technical	8,838	18.0%
Clerical	2,868	5.8%
Other White Collar	1,286	2.6%
Blue Collar	3,724	7.6%

All data unless otherwise noted is provided by the US Office of Personnel Management for the December 2014 reporting period. ¹Non-Federal Workers Data calculated from the US Bureau of Labor Statistics 2014 Annual Averages https://www.bls.gov/news.release/archives/vet_03182015.pdf. ²Employment categories consistent with the definitions given by the US Office of Personnel Management "Introduction to the Position Classification Standards" 2009. For a description of the employment categories, refer to <http://www.opm.gov/policy-data-oversight/classification-qualifications/classifying-general-schedule-positions/positionclassificationintro.pdf>.

Who are the Civilian Federal Employees in

Illinois - 2013

Federal Workers in Illinois: 49,310

Percentage Who Are Veterans: 26.64%

Non-Federal Workers in Illinois: 5,894,000¹

Percentage Who Are Veterans: 5.89%¹

Five Largest Federal Employers

VA: 12,419



Army: 7,155



DHS: 4,794



Air Force: 3,600



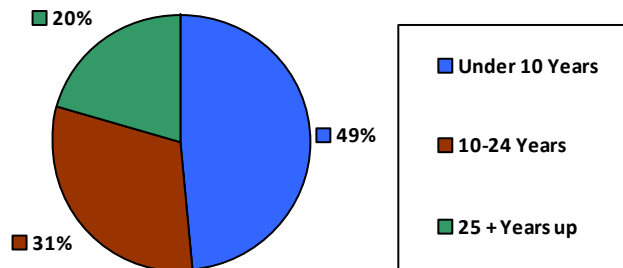
Justice: 3,163



Race and Ethnicity

White, non-Hispanic	32,479	65.9%
Black/African American, non-Hispanic	10,364	21.0%
Hispanic or Latino	3,017	6.1%
Asian, non-Hispanic	2,660	5.4%
Two or more races	404	0.8%
American Indian and Alaska Native	319	0.6%
Native Hawaiian and Other Pacific Islander	62	0.1%

Length of Service



Educational Attainment

HS or Below	10,837	22.0%
Occupational Program	1,916	3.9%
Between HS and Bachelors	10,844	22.0%
Bachelors + Post Bachelors	17,292	35.1%
Masters and Post Grad	7,329	14.8%
Doctorate and Post Doc	1,072	2.2%

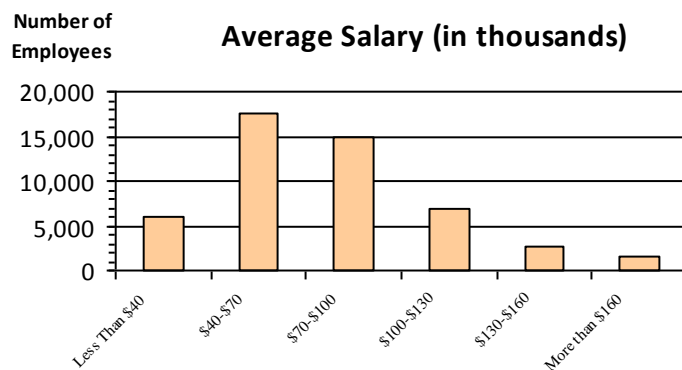
Gender

M	26,135	53.0%
F	23,175	47.0%

Age

<35	9,462	19.2%
35-54	25,640	52.0%
55+	14,208	28.8%

Average Salary (in thousands)



Type of Employment²

Administrative	19,872	40.3%
Professional	12,583	25.5%
Technical	8,104	16.4%
Clerical	3,714	7.5%
Other White Collar	1,236	2.5%
Blue Collar	3,795	7.7%

All data unless otherwise noted is provided by the US Office of Personnel Management for the December 2013 reporting period. ¹Non-Federal Workers Data calculated from the US Bureau of Labor Statistics 2013 Annual Averages https://www.bls.gov/news.release/archives/vet_03202014.pdf. ²Employment categories consistent with the definitions given by the US Office of Personnel Management "Introduction to the Position Classification Standards" 2009. For a description of the employment categories, refer to <http://www.opm.gov/policy-data-oversight/classification-qualifications/classifying-general-schedule-positions/positionclassificationintro.pdf>.