

## Who are the Civilian Federal Employees in

# Idaho - 2021

**Federal Workers in Idaho: 9,604**

Percentage Who Are Veterans: 25.78%

**Non-Federal Workers in Idaho: 862,000**<sup>1</sup>

Percentage Who Are Veterans: 6.15%<sup>1</sup>

### Five Largest Federal Employers

Agriculture: 2,423



VA: 2,045



DOI: 1,931



Air Force: 689



Army: 668



### Race and Ethnicity

White, non-Hispanic	8,279	86.2%
Black/African American, non-Hispanic	111	1.2%
Hispanic or Latino	608	6.3%
Asian, non-Hispanic	137	1.4%
Two or more races	179	1.9%
American Indian and Alaska Native	198	2.1%
Native Hawaiian and Other Pacific Islander	40	0.4%

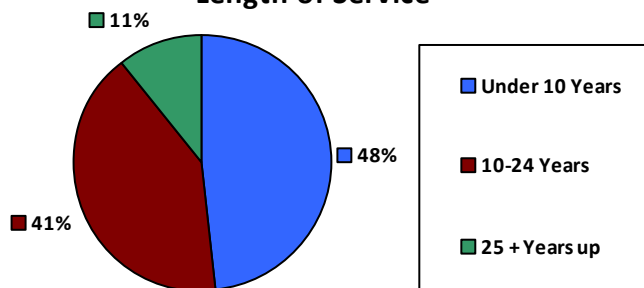
### Gender

M	5,972	62.2%
F	3,632	37.8%

### Age

<35	1,761	18.3%
35-54	5,462	56.9%
55+	2,381	24.8%

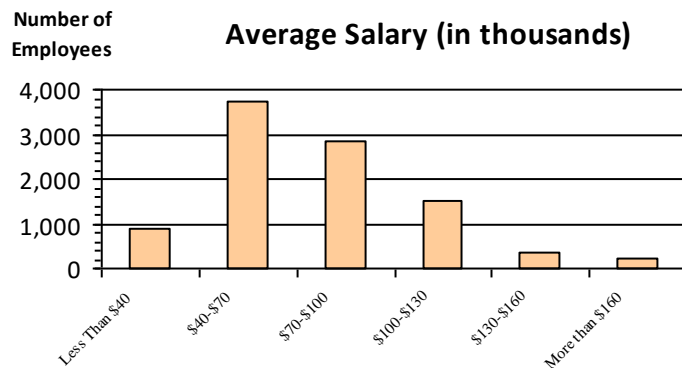
### Length of Service



### Educational Attainment

HS or Below	2,552	26.6%
Occupational Program	172	1.8%
Between HS and Bachelors	2,015	21.0%
Bachelors + Post Bachelors	3,303	34.4%
Masters and Post Grad	1,270	13.2%
Doctorate and Post Doc	252	2.6%

### Average Salary (in thousands)



### Type of Employment<sup>2</sup>

Administrative	2,852	29.7%
Professional	2,295	23.9%
Technical	482	5.0%
Clerical	172	1.8%
Other White Collar	855	8.9%
Blue Collar	909	9.5%

All data unless otherwise noted is provided by the US Office of Personnel Management for the December 2015 reporting period. <sup>1</sup>Non-Federal Workers Data calculated from the US Bureau of Labor Statistics 2015 Annual Averages [https://www.bls.gov/news.release/archives/vet\\_03222016.pdf](https://www.bls.gov/news.release/archives/vet_03222016.pdf). <sup>2</sup>Employment categories consistent with the definitions given by the US Office of Personnel Management "Introduction to the Position Classification Standards" 2009. For a description of the employment categories, refer to <http://www.opm.gov/policy-data-oversight/classification-qualifications/classifying-general-schedule-positions/positionclassificationintro.pdf>.

## Who are the Civilian Federal Employees in

# Idaho - 2020

**Federal Workers in Idaho: 9,639**

Percentage Who Are Veterans: 26.49%

**Non-Federal Workers in Idaho: 832,000<sup>1</sup>**

Percentage Who Are Veterans: 5.89%<sup>1</sup>

### Five Largest Federal Employers

Agriculture: 2,370



VA: 2,062



DOI: 1,954



Air Force: 710



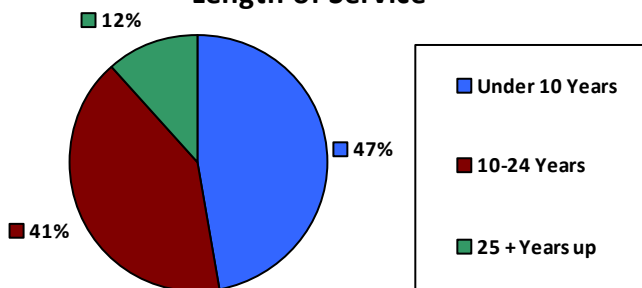
Army: 689



### Race and Ethnicity

White, non-Hispanic	8,400	87.1%
Black/African American, non-Hispanic	102	1.1%
Hispanic or Latino	564	5.9%
Asian, non-Hispanic	136	1.4%
Two or more races	165	1.7%
American Indian and Alaska Native	204	2.1%
Native Hawaiian and Other Pacific Islander	36	0.4%

### Length of Service



### Educational Attainment

HS or Below	2,562	26.6%
Occupational Program	183	1.9%
Between HS and Bachelors	2,062	21.4%
Bachelors + Post Bachelors	3,277	34.0%
Masters and Post Grad	1,266	13.1%
Doctorate and Post Doc	246	2.6%

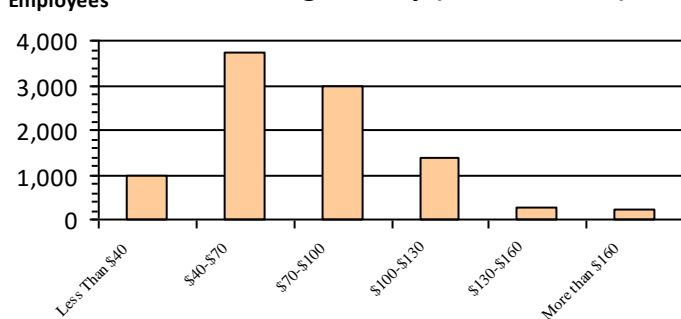
### Gender

M	6,005	62.3%
F	3,634	37.7%

### Age

<35	1,793	18.6%
35-54	5,443	56.5%
55+	2,402	24.9%

### Average Salary (in thousands)



### Type of Employment<sup>2</sup>

Administrative	2,950	30.6%
Professional	2,813	29.2%
Technical	2,243	23.3%
Clerical	514	5.3%
Other White Collar	201	2.1%
Blue Collar	909	9.4%

All data unless otherwise noted is provided by the US Office of Personnel Management for the December 2015 reporting period. <sup>1</sup>Non-Federal Workers Data calculated from the US Bureau of Labor Statistics 2015 Annual Averages [https://www.bls.gov/news.release/archives/vet\\_03222016.pdf](https://www.bls.gov/news.release/archives/vet_03222016.pdf). <sup>2</sup>Employment categories consistent with the definitions given by the US Office of Personnel Management "Introduction to the Position Classification Standards" 2009. For a description of the employment categories, refer to <http://www.opm.gov/policy-data-oversight/classification-qualifications/classifying-general-schedule-positions/positionclassificationintro.pdf>.

## Who are the Civilian Federal Employees in

# Idaho - 2019

**Federal Workers in Idaho: 9,377**

Percentage Who Are Veterans: 26.90%

**Non-Federal Workers in Idaho: 842,000<sup>1</sup>**

Percentage Who Are Veterans: 6.29%<sup>1</sup>

### Five Largest Federal Employers

Agriculture: 2,262



DOI: 1,925



VA: 1,907



Air Force: 715



Army: 672



### Race and Ethnicity

White, non-Hispanic	8,237	87.8%
Black/African American, non-Hispanic	93	1.0%
Hispanic or Latino	528	5.6%
Asian, non-Hispanic	128	1.4%
Two or more races	150	1.6%
American Indian and Alaska Native	192	2.0%
Native Hawaiian and Other Pacific Islander	35	0.4%

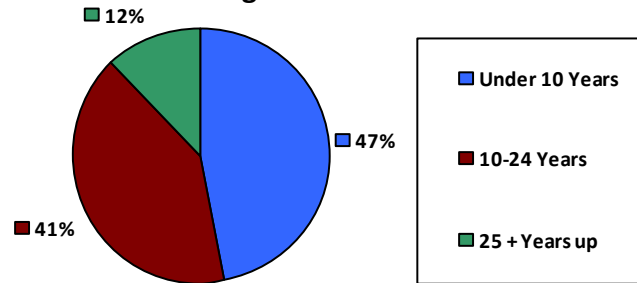
### Gender

M	5,912	63.0%
F	3,465	36.9%

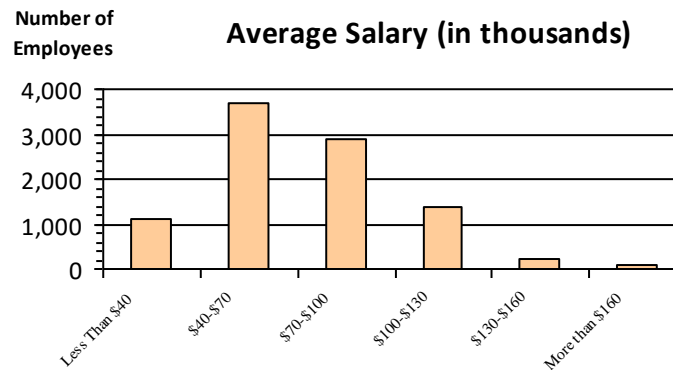
### Age

<35	1,626	17.3%
35-54	5,332	56.9%
55+	2,419	25.8%

### Length of Service



### Average Salary (in thousands)



### Educational Attainment

HS or Below	2,291	24.4%
Occupational Program	266	2.8%
Between HS and Bachelors	2,090	22.3%
Bachelors + Post Bachelors	3,244	34.6%
Masters and Post Grad	1,219	13.0%
Doctorate and Post Doc	250	2.7%

### Type of Employment<sup>2</sup>

Administrative	2,875	30.7%
Professional	2,700	28.8%
Technical	2,137	22.8%
Clerical	536	5.7%
Other White Collar	202	2.2%
Blue Collar	919	9.8%

All data unless otherwise noted is provided by the US Office of Personnel Management for the December 2015 reporting period. <sup>1</sup>Non-Federal Workers Data calculated from the US Bureau of Labor Statistics 2015 Annual Averages [https://www.bls.gov/news.release/archives/vet\\_03222016.pdf](https://www.bls.gov/news.release/archives/vet_03222016.pdf). <sup>2</sup>Employment categories consistent with the definitions given by the US Office of Personnel Management "Introduction to the Position Classification Standards" 2009. For a description of the employment categories, refer to <http://www.opm.gov/policy-data-oversight/classification-qualifications/classifying-general-schedule-positions/positionclassificationintro.pdf>.

## Who are the Civilian Federal Employees in

# Idaho - 2018

**Federal Workers in Idaho: 9,376**

*Percentage Who Are Veterans: 26.57%*

**Non-Federal Workers in Idaho: 819,000**<sup>1</sup>

*Percentage Who Are Veterans: 6.71%*<sup>1</sup>

### Five Largest Federal Employers

Agriculture: 2,355



DOI: 1,947



VA: 1,797



Air Force: 740



Army: 704



#### Race and Ethnicity

White, non-Hispanic	8,251	88.0%
Black/African American, non-Hispanic	103	1.1%
Hispanic or Latino	511	5.4%
Asian, non-Hispanic	120	1.3%
Two or more races	147	1.6%
American Indian and Alaska Native	201	2.1%
Native Hawaiian and Other Pacific Islander	36	0.4%

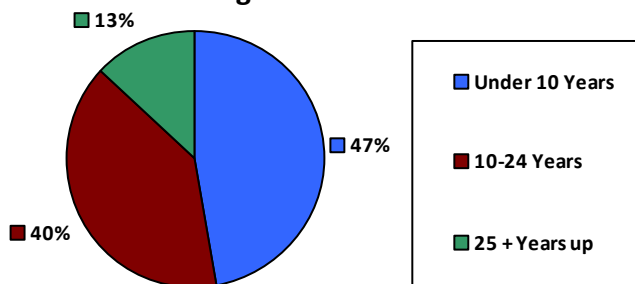
#### Gender

M	5,907	63.0%
F	3,466	37.0%

#### Age

<35	1,726	18.4%
35-54	5,213	55.6%
55+	2,437	26.0%

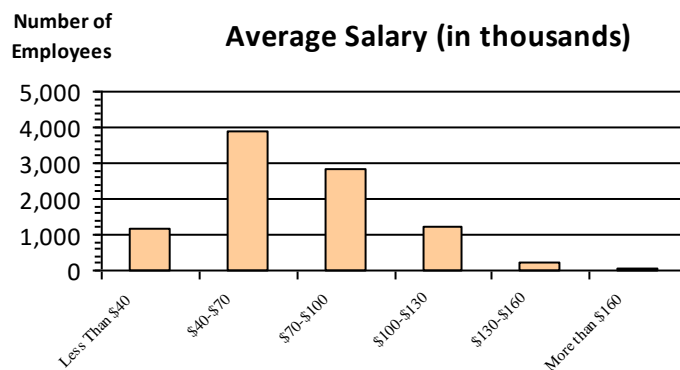
#### Length of Service



#### Educational Attainment

HS or Below	2,247	24.0%
Occupational Program	273	2.9%
Between HS and Bachelors	2,154	23.0%
Bachelors + Post Bachelors	3,248	34.6%
Masters and Post Grad	1,202	12.8%
Doctorate and Post Doc	232	2.5%

#### Average Salary (in thousands)



#### Type of Employment<sup>2</sup>

Administrative	2,791	29.8%
Professional	2,677	28.5%
Technical	2,235	23.8%
Clerical	511	5.4%
Other White Collar	194	2.1%
Blue Collar	958	10.2%

All data unless otherwise noted is provided by the US Office of Personnel Management for the December 2018 reporting period. <sup>1</sup>Non-Federal Workers Data calculated from the US Bureau of Labor Statistics 2018 Annual Averages [www.bls.gov/news.release/pdf/vet.pdf](http://www.bls.gov/news.release/pdf/vet.pdf). <sup>2</sup>Employment categories consistent with the definitions given by the US Office of Personnel Management "Introduction to the Position Classification Standards" 2009. For a description of the employment categories, refer to [www.opm.gov/policy-data-oversight/classification-qualifications/classifying-general-schedule-positions/positionclassificationintro.pdf](http://www.opm.gov/policy-data-oversight/classification-qualifications/classifying-general-schedule-positions/positionclassificationintro.pdf).

## Who are the Civilian Federal Employees in

# Idaho - 2017

**Federal Workers in Idaho: 9,206**

Percentage Who Are Veterans: 26.07%

**Non-Federal Workers in Idaho: 791,000<sup>1</sup>**

Percentage Who Are Veterans: 7.04%<sup>2</sup>

### Five Largest Federal Employers

Agriculture: 2,277



DOI: 1,967



VA: 1,678



Air Force: 731



Army: 688



### Race and Ethnicity

White, non-Hispanic	8,143	88.4%
Black/African American, non-Hispanic	97	1.1%
Hispanic or Latino	481	5.2%
Asian, non-Hispanic	118	1.3%
Two or more races	130	1.4%
American Indian and Alaska Native	193	2.1%
Native Hawaiian and Other Pacific Islander	38	0.4%

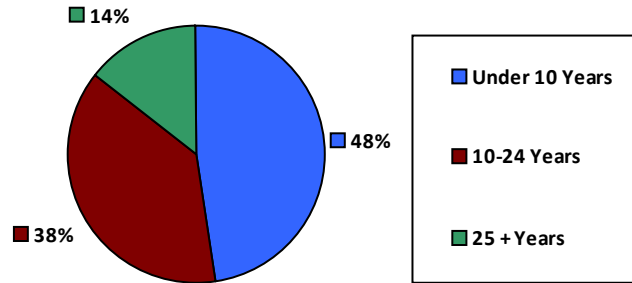
### Gender

M	5,791	62.9%
F	3,412	37.1%

### Age

<35	1,712	18.6%
35-54	5,090	55.3%
55+	2,404	26.1%

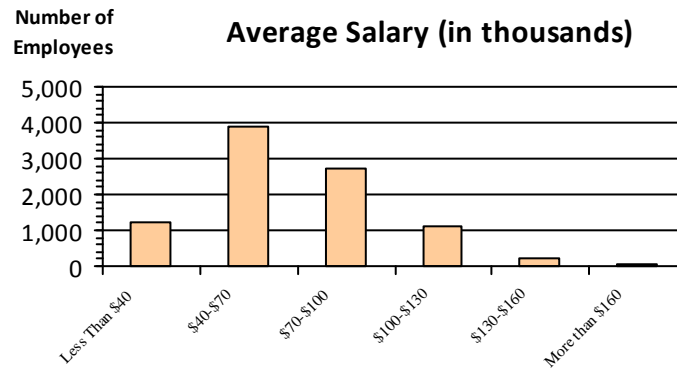
### Length of Service



### Educational Attainment

HS or Below	2,168	23.5%
Occupational Program	269	2.9%
Between HS and Bachelors	2,146	23.3%
Bachelors + Post Bachelors	3,193	34.7%
Masters and Post Grad	1,190	12.9%
Doctorate and Post Doc	225	2.4%

### Average Salary (in thousands)



### Type of Employment<sup>2</sup>

Administrative	2,735	29.7%
Professional	2,636	28.6%
Technical	2,134	23.2%
Clerical	526	5.7%
Other White Collar	208	2.3%
Blue Collar	967	10.5%

All data unless otherwise noted is provided by the US Office of Personnel Management for the December 2017 reporting period. Non-Federal Workers Data calculated from the US Bureau of Labor Statistics 2017 Annual Averages <https://www.bls.gov/news.release/vet.htm>.<sup>1</sup> Employment categories consistent with the definitions given by the US Office of Personnel Management "Introduction to the Position Classification Standards" (Revised: 2009), available at <https://www.opm.gov/policy-data-oversight/classification-qualifications/classifying-general-schedule-positions/positionclassificationintro.pdf>.<sup>2</sup>

## Who are the Civilian Federal Employees in

# Idaho - 2016

**Federal Workers in Idaho: 9,091**

Percentage Who Are Veterans: 25.76%

**Non-Federal Workers in Idaho: 766,000**<sup>1</sup>

Percentage Who Are Veterans: 7.31%<sup>1</sup>

### Five Largest Federal Employers

Agriculture: 2,398



DOI: 1,884



VA: 1,558



Air Force: 734



Army: 662



### Race and Ethnicity

White, non-Hispanic	8,045	88.5%
Black/African American, non-Hispanic	94	1.0%
Hispanic or Latino	469	5.2%
Asian, non-Hispanic	118	1.3%
Two or more races	125	1.4%
American Indian and Alaska Native	199	2.2%
Native Hawaiian and Other Pacific Islander	35	0.4%

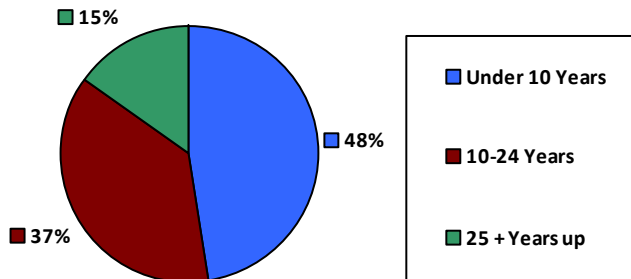
### Gender

M	5,772	63.5%
F	3,319	36.5%

### Age

<35	1,684	18.5%
35-54	4,990	54.9%
55+	2,417	26.6%

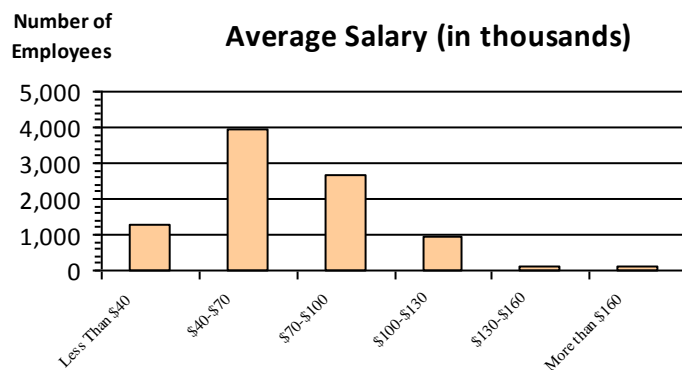
### Length of Service



### Educational Attainment

HS or Below	2,202	24.2%
Occupational Program	268	2.9%
Between HS and Bachelors	2,127	23.4%
Bachelors + Post Bachelors	3,115	34.3%
Masters and Post Grad	1,147	12.6%
Doctorate and Post Doc	213	2.3%

### Average Salary (in thousands)



### Type of Employment<sup>2</sup>

Administrative	2,699	29.7%
Professional	2,568	28.2%
Technical	2,169	23.9%
Clerical	496	5.5%
Other White Collar	184	2.0%
Blue Collar	975	10.7%

All data unless otherwise noted is provided by the US Office of Personnel Management for the December 2016 reporting period. <sup>1</sup>Non-Federal Workers Data calculated from the US Bureau of Labor Statistics 2015 Annual Averages [https://www.bls.gov/news.release/archives/vet\\_03222016.pdf](https://www.bls.gov/news.release/archives/vet_03222016.pdf). <sup>2</sup>Employment categories consistent with the definitions given by the US Office of Personnel Management "Introduction to the Position Classification Standards" 2009. For a description of the employment categories, refer to <http://www.opm.gov/policy-data-oversight/classification-qualifications/classifying-general-schedule-positions/positionclassificationintro.pdf>.

## Who are the Civilian Federal Employees in

# Idaho - 2015

**Federal Workers in Idaho: 8,995**

Percentage Who Are Veterans: 25.32%

**Non-Federal Workers in Idaho: 754,000**<sup>1</sup>

Percentage Who Are Veterans: 7.96%<sup>1</sup>

### Five Largest Federal Employers

Agriculture: 2,409



DOI: 1,768



VA: 1,567



Air Force: 757



Army: 693



### Race and Ethnicity

White, non-Hispanic	8,007	89.0%
Black/African American, non-Hispanic	90	1.0%
Hispanic or Latino	434	4.8%
Asian, non-Hispanic	114	1.3%
Two or more races	102	1.1%
American Indian and Alaska Native	207	2.3%
Native Hawaiian and Other Pacific Islander	38	0.4%

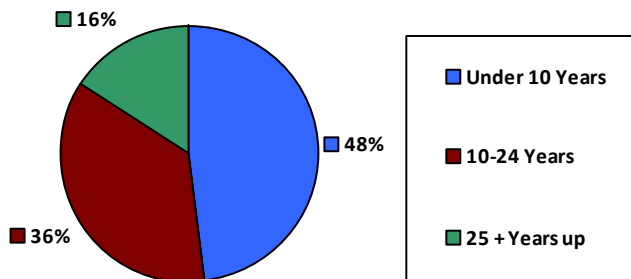
### Gender

M	5,682	63.2%
F	3,313	36.8%

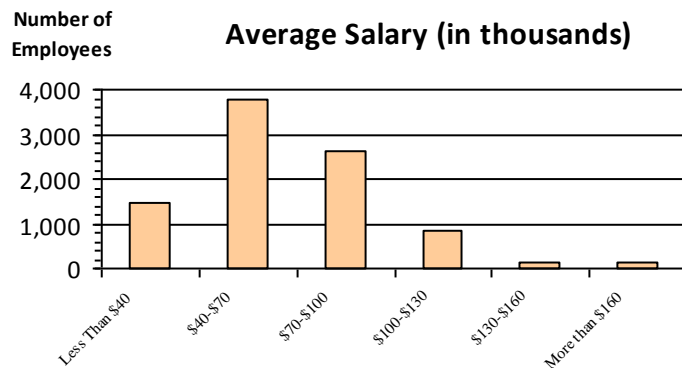
### Age

<35	1,662	18.5%
35-54	4,962	55.2%
55+	2,371	26.4%

### Length of Service



### Average Salary (in thousands)



### Educational Attainment

HS or Below	2,169	24.1%
Occupational Program	286	3.2%
Between HS and Bachelors	2,120	23.6%
Bachelors + Post Bachelors	3,081	34.2%
Masters and Post Grad	1,124	12.5%
Doctorate and Post Doc	204	2.3%

### Type of Employment<sup>2</sup>

Administrative	2,591	28.8%
Professional	2,568	28.5%
Technical	2,178	24.2%
Clerical	490	5.4%
Other White Collar	162	1.8%
Blue Collar	1,005	11.2%

All data unless otherwise noted is provided by the US Office of Personnel Management for the December 2015 reporting period. <sup>1</sup>Non-Federal Workers Data calculated from the US Bureau of Labor Statistics 2015 Annual Averages [https://www.bls.gov/news.release/archives/vet\\_03222016.pdf](https://www.bls.gov/news.release/archives/vet_03222016.pdf). <sup>2</sup>Employment categories consistent with the definitions given by the US Office of Personnel Management "Introduction to the Position Classification Standards" 2009. For a description of the employment categories, refer to <http://www.opm.gov/policy-data-oversight/classification-qualifications/classifying-general-schedule-positions/positionclassificationintro.pdf>.

## Who are the Civilian Federal Employees in

# Idaho - 2014

**Federal Workers in Idaho: 8,794**

*Percentage Who Are Veterans: 24.73%*

**Non-Federal Workers in Idaho: 722,000**<sup>1</sup>

*Percentage Who Are Veterans: 7.89%*<sup>1</sup>

### Five Largest Federal Employers

Agriculture: 2,389



DOI: 1,775



VA: 1,467



Army: 709



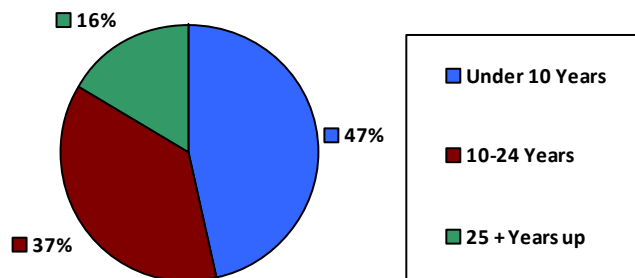
Air Force: 684



#### Race and Ethnicity

White, non-Hispanic	7,867	89.4%
Black/African American, non-Hispanic	89	1.0%
Hispanic or Latino	395	4.5%
Asian, non-Hispanic	115	1.3%
Two or more races	91	1.0%
American Indian and Alaska Native	206	2.3%
Native Hawaiian and Other Pacific Islander	29	0.3%

#### Length of Service



#### Educational Attainment

HS or Below	2,166	24.6%
Occupational Program	281	3.2%
Between HS and Bachelors	2,076	23.6%
Bachelors + Post Bachelors	2,994	34.0%
Masters and Post Grad	1,091	12.4%
Doctorate and Post Doc	177	2.0%

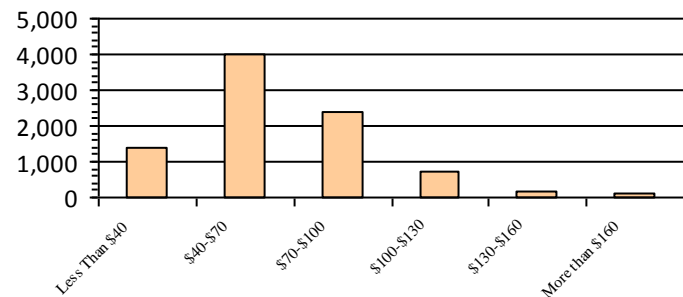
#### Gender

M	5,575	63.4%
F	3,219	36.6%

#### Age

<35	1,607	18.3%
35-54	4,835	55.0%
55+	2,352	26.7%

#### Average Salary (in thousands)



#### Type of Employment<sup>2</sup>

Administrative	2,501	28.4%
Professional	2,519	28.6%
Technical	2,183	24.8%
Clerical	478	5.4%
Other White Collar	161	1.8%
Blue Collar	952	10.8%

All data unless otherwise noted is provided by the US Office of Personnel Management for the December 2014 reporting period. <sup>1</sup>Non-Federal Workers Data calculated from the US Bureau of Labor Statistics 2014 Annual Averages [https://www.bls.gov/news.release/archives/vet\\_03182015.pdf](https://www.bls.gov/news.release/archives/vet_03182015.pdf). <sup>2</sup>Employment categories consistent with the definitions given by the US Office of Personnel Management "Introduction to the Position Classification Standards" 2009. For a description of the employment categories, refer to <http://www.opm.gov/policy-data-oversight/classification-qualifications/classifying-general-schedule-positions/positionclassificationintro.pdf>.



## Who are the Civilian Federal Employees in

# Idaho - 2013

**Federal Workers in Idaho: 8,629**

*Percentage Who Are Veterans: 24.29%*

**Non-Federal Workers in Idaho: 705,000**<sup>1</sup>

*Percentage Who Are Veterans: 8.08%*<sup>1</sup>

### Five Largest Federal Employers

Agriculture: 2,352



DOI: 1,788



VA: 1,358



Army: 720



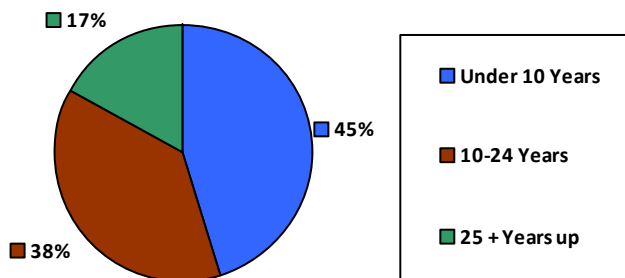
Air Force: 680



#### Race and Ethnicity

White, non-Hispanic	7,732	89.6%
Black/African American, non-Hispanic	81	0.9%
Hispanic or Latino	398	4.6%
Asian, non-Hispanic	106	1.2%
Two or more races	82	1.0%
American Indian and Alaska Native	208	2.4%
Native Hawaiian and Other Pacific Islander	20	0.2%

#### Length of Service



#### Educational Attainment

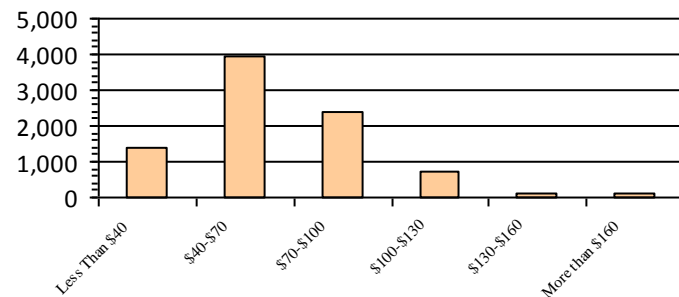
HS or Below	2,115	24.5%
Occupational Program	293	3.4%
Between HS and Bachelors	2,091	24.2%
Bachelors + Post Bachelors	2,924	33.9%
Masters and Post Grad	1,034	12.0%
Doctorate and Post Doc	165	1.9%

#### Gender

#### Age

Gender	Count	Percentage	Age Group	Count	Percentage
M	5,453	63.2%	<35	1,535	17.8%
			35-54	4,730	54.8%
F	3,176	36.8%	55+	2,364	27.4%

#### Average Salary (in thousands)



#### Type of Employment<sup>2</sup>

Administrative	2,459	28.5%
Professional	2,457	28.5%
Technical	2,109	24.4%
Clerical	454	5.3%
Other White Collar	198	2.3%
Blue Collar	949	11.0%

All data unless otherwise noted is provided by the US Office of Personnel Management for the December 2013 reporting period. <sup>1</sup>Non-Federal Workers Data calculated from the US Bureau of Labor Statistics 2013 Annual Averages [https://www.bls.gov/news.release/archives/vet\\_03202014.pdf](https://www.bls.gov/news.release/archives/vet_03202014.pdf). <sup>2</sup>Employment categories consistent with the definitions given by the US Office of Personnel Management "Introduction to the Position Classification Standards" 2009. For a description of the employment categories, refer to <http://www.opm.gov/policy-data-oversight/classification-qualifications/classifying-general-schedule-positions/positionclassificationintro.pdf>.