

Who are the Civilian Federal Employees in

Hawaii - 2021

Federal Workers in Hawaii: 26,753

Percentage Who Are Veterans: 30.62%

Non-Federal Workers in Hawaii: 601,000¹

Percentage Who Are Veterans: 6.82%¹

Five Largest Federal Employers

Navy: 12,066



Army: 5,081



DHS: 1,973



VA: 1,771



Air Force: 1,272



Race and Ethnicity

White, non-Hispanic	7,689	28.7%
Black/African American, non-Hispanic	1,133	4.2%
Hispanic or Latino	1,664	6.2%
Asian, non-Hispanic	9,937	37.1%
Two or more races	3,052	11.4%
American Indian and Alaska Native	180	0.7%
Native Hawaiian and Other Pacific Islander	2,972	11.1%

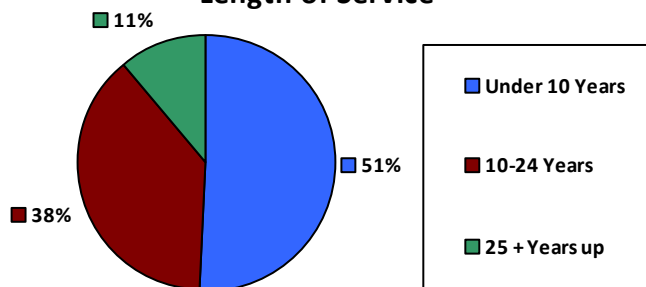
Gender

M	17,406	65.1%
F	9,347	34.9%

Age

<35	5,278	19.7%
35-54	13,746	51.4%
55+	7,729	28.9%

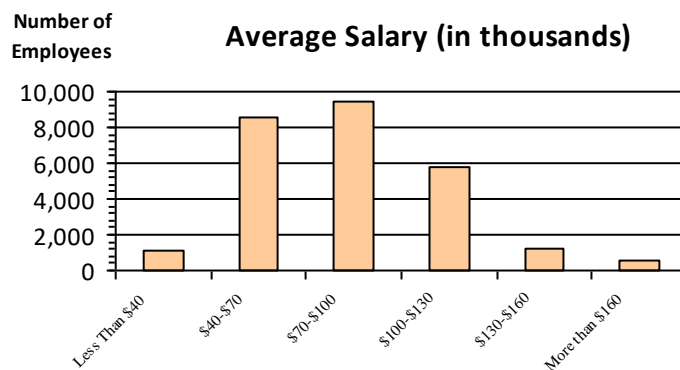
Length of Service



Educational Attainment

HS or Below	7,931	29.6%
Occupational Program	418	1.6%
Between HS and Bachelors	5,956	22.3%
Bachelors + Post Bachelors	8,208	30.7%
Masters and Post Grad	3,461	12.9%
Doctorate and Post Doc	716	2.7%

Average Salary (in thousands)



Type of Employment²

Administrative	5,952	22.2%
Professional	4,402	16.5%
Technical	1,136	4.2%
Clerical	872	3.3%
Other White Collar	5,825	21.8%
Blue Collar	5,811	21.7%

All data unless otherwise noted is provided by the US Office of Personnel Management for the December 2015 reporting period. ¹Non-Federal Workers Data calculated from the US Bureau of Labor Statistics 2015 Annual Averages https://www.bls.gov/news.release/archives/vet_03222016.pdf. ²Employment categories consistent with the definitions given by the US Office of Personnel Management "Introduction to the Position Classification Standards" 2009. For a description of the employment categories, refer to <http://www.opm.gov/policy-data-oversight/classification-qualifications/classifying-general-schedule-positions/positionclassificationintro.pdf>.

Who are the Civilian Federal Employees in

Hawaii - 2020

Federal Workers in Hawaii: 26,724

Percentage Who Are Veterans: 31.29%

Non-Federal Workers in Hawaii: 572,000¹

Percentage Who Are Veterans: 8.22%¹

Five Largest Federal Employers

Navy: 12,096



Army: 5,120



DHS: 2,006



VA: 1,656



Air Force: 1,319



Race and Ethnicity

White, non-Hispanic	7,851	29.4%
Black/African American, non-Hispanic	1,151	4.3%
Hispanic or Latino	1,604	6.0%
Asian, non-Hispanic	9,963	37.3%
Two or more races	2,925	10.9%
American Indian and Alaska Native	163	0.6%
Native Hawaiian and Other Pacific Islander	2,968	11.1%

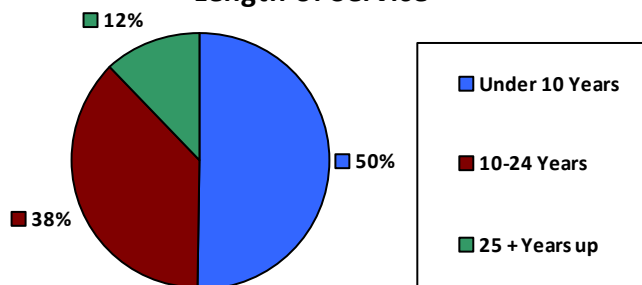
Gender

M	17,378	65.0%
F	9,346	35.0%

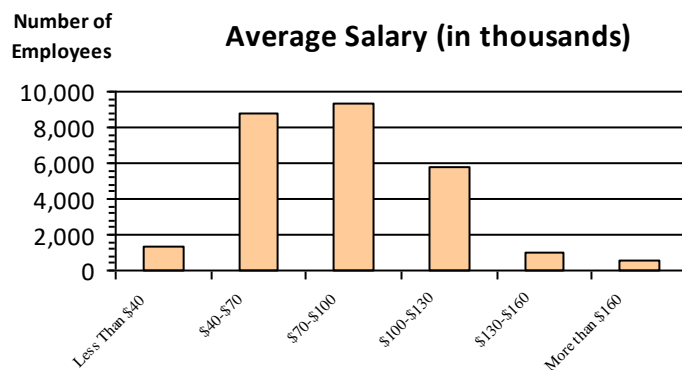
Age

<35	5,344	20.0%
35-54	13,580	50.8%
55+	7,800	29.2%

Length of Service



Average Salary (in thousands)



Educational Attainment

HS or Below	7,905	29.6%
Occupational Program	428	1.6%
Between HS and Bachelors	5,967	22.3%
Bachelors + Post Bachelors	8,218	30.7%
Masters and Post Grad	3,461	12.9%
Doctorate and Post Doc	709	2.7%

Type of Employment²

Administrative	8,493	31.8%
Professional	5,901	22.1%
Technical	4,458	16.7%
Clerical	1,176	4.4%
Other White Collar	885	3.3%
Blue Collar	5,811	21.7%

All data unless otherwise noted is provided by the US Office of Personnel Management for the December 2015 reporting period. ¹Non-Federal Workers Data calculated from the US Bureau of Labor Statistics 2015 Annual Averages https://www.bls.gov/news.release/archives/vet_03222016.pdf. ²Employment categories consistent with the definitions given by the US Office of Personnel Management "Introduction to the Position Classification Standards" 2009. For a description of the employment categories, refer to <http://www.opm.gov/policy-data-oversight/classification-qualifications/classifying-general-schedule-positions/positionclassificationintro.pdf>.

Who are the Civilian Federal Employees in

Hawaii - 2019

Federal Workers in Hawaii: 26,635

Percentage Who Are Veterans: 31.58%

Non-Federal Workers in Hawaii: 636,000¹

*Percentage Who Are Veterans: 6.92%*¹

Five Largest Federal Employers

Navy: 11,782



Army: 5,206



DHS: 2,122



VA: 1,624



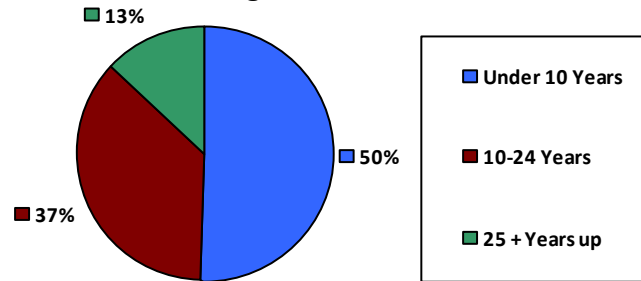
Air Force: 1,421



Race and Ethnicity

White, non-Hispanic	7,518	28.2%
Black/African American, non-Hispanic	1,146	4.3%
Hispanic or Latino	1,495	5.6%
Asian, non-Hispanic	8,775	32.9%
Two or more races	2,780	10.4%
American Indian and Alaska Native	162	0.6%
Native Hawaiian and Other Pacific Islander	2,706	10.2%

Length of Service



Educational Attainment

HS or Below	7,853	29.5%
Occupational Program	515	1.9%
Between HS and Bachelors	6,056	22.7%
Bachelors + Post Bachelors	8,071	30.3%
Masters and Post Grad	3,381	12.7%
Doctorate and Post Doc	725	2.7%

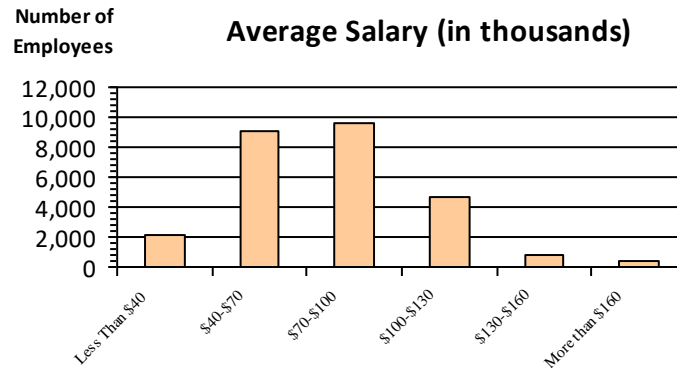
Gender

M	17,372	65.2%
F	9,262	34.8%

Age

<35	5,382	20.2%
35-54	13,364	50.2%
55+	7,889	29.6%

Average Salary (in thousands)



Type of Employment²

Administrative	8,256	31.0%
Professional	5,816	21.8%
Technical	4,451	16.7%
Clerical	1,417	5.3%
Other White Collar	906	3.4%
Blue Collar	5,789	21.7%

All data unless otherwise noted is provided by the US Office of Personnel Management for the December 2015 reporting period. ¹Non-Federal Workers Data calculated from the US Bureau of Labor Statistics 2015 Annual Averages https://www.bls.gov/news.release/archives/vet_03222016.pdf. ²Employment categories consistent with the definitions given by the US Office of Personnel Management "Introduction to the Position Classification Standards" 2009. For a description of the employment categories, refer to <http://www.opm.gov/policy-data-oversight/classification-qualifications/classifying-general-schedule-positions/positionclassificationintro.pdf>.

Who are the Civilian Federal Employees in

Hawaii - 2018

Federal Workers in Hawaii: 25,824

Percentage Who Are Veterans: 32.48%

Non-Federal Workers in Hawaii: 659,000¹

Percentage Who Are Veterans: 7.59%¹

Five Largest Federal Employers

Navy: 11,207



Army: 5,224



DHS: 2,018



Air Force: 1,539



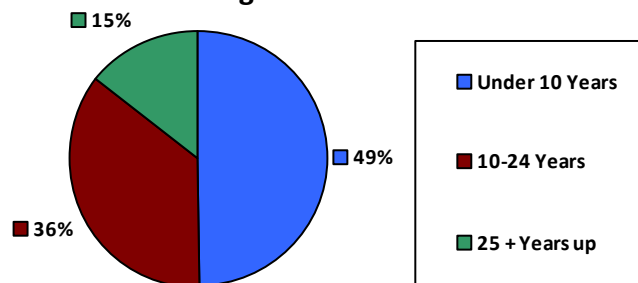
VA: 1,444



Race and Ethnicity

White, non-Hispanic	7,348	28.5%
Black/African American, non-Hispanic	1,146	4.4%
Hispanic or Latino	1,385	5.4%
Asian, non-Hispanic	8,494	32.9%
Two or more races	2,500	9.7%
American Indian and Alaska Native	136	0.5%
Native Hawaiian and Other Pacific Islander	2,567	9.9%

Length of Service



Educational Attainment

HS or Below	7,373	28.5%
Occupational Program	549	2.1%
Between HS and Bachelors	6,092	23.6%
Bachelors + Post Bachelors	7,786	30.1%
Masters and Post Grad	3,263	12.6%
Doctorate and Post Doc	704	2.7%

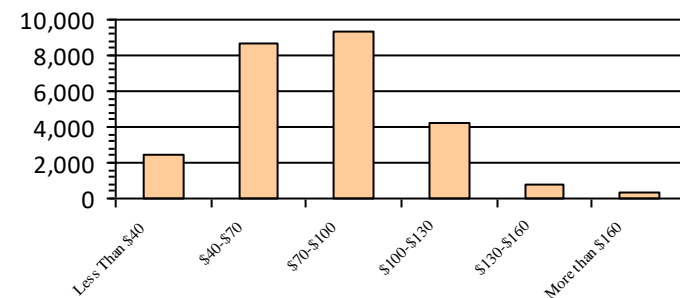
Gender

M	16,926	65.6%
F	8,891	34.4%

Age

<35	5,034	19.5%
35-54	12,933	50.1%
55+	7,857	30.4%

Average Salary (in thousands)



Type of Employment²

Administrative	7,997	31.0%
Professional	5,645	21.9%
Technical	4,436	17.2%
Clerical	1,317	5.1%
Other White Collar	903	3.5%
Blue Collar	5,526	21.4%

All data unless otherwise noted is provided by the US Office of Personnel Management for the December 2018 reporting period. ¹Non-Federal Workers Data calculated from the US Bureau of Labor Statistics 2018 Annual Averages www.bls.gov/news.release/pdf/vet.pdf. ²Employment categories consistent with the definitions given by the US Office of Personnel Management "Introduction to the Position Classification Standards" 2009. For a description of the employment categories, refer to www.opm.gov/policy-data-oversight/classification-qualifications/classifying-general-schedule-positions/positionclassificationintro.pdf.

Who are the Civilian Federal Employees in

Hawaii - 2017

Federal Workers in Hawaii: 25,436

Percentage Who Are Veterans: 33.01%

Non-Federal Workers in Hawaii: 665,000¹

Percentage Who Are Veterans: 8.66%²

Five Largest Federal Employers

Navy: 10,742



Army: 5,296



DHS: 1,959



Air Force: 1,658



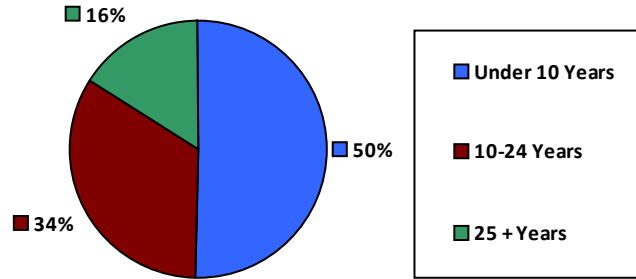
Defense: 1,242



Race and Ethnicity

White, non-Hispanic	7,732	30.4%
Black/African American, non-Hispanic	1,171	4.6%
Hispanic or Latino	1,375	5.4%
Asian, non-Hispanic	9,823	38.6%
Two or more races	2,292	9.0%
American Indian and Alaska Native	145	0.6%
Native Hawaiian and Other Pacific Islander	2,888	11.4%

Length of Service



Educational Attainment

HS or Below	7,295	28.7%
Occupational Program	572	2.2%
Between HS and Bachelors	6,220	24.5%
Bachelors + Post Bachelors	7,554	29.7%
Masters and Post Grad	3,096	12.2%
Doctorate and Post Doc	658	2.6%

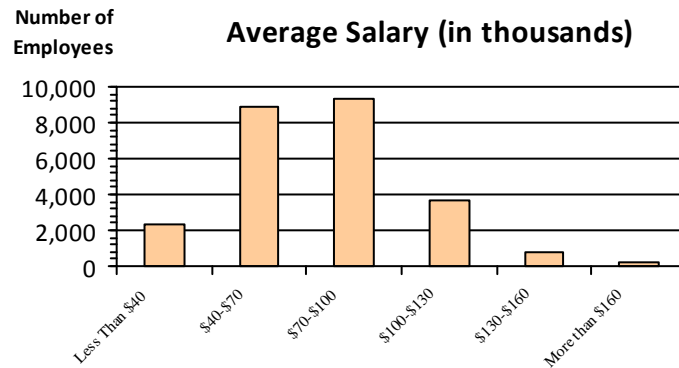
Gender

M	16,802	66.1%
F	8,631	33.9%

Age

<35	4,863	19.1%
35-54	12,702	49.9%
55+	7,871	30.9%

Average Salary (in thousands)



Type of Employment²

Administrative	7,898	31.0%
Professional	5,379	21.1%
Technical	4,418	17.4%
Clerical	1,301	5.1%
Other White Collar	918	3.6%
Blue Collar	5,522	21.7%

All data unless otherwise noted is provided by the US Office of Personnel Management for the December 2017 reporting period. Non-Federal Workers Data calculated from the US Bureau of Labor Statistics 2017 Annual Averages <https://www.bls.gov/news.release/vet.htm>.¹ Employment categories consistent with the definitions given by the US Office of Personnel Management "Introduction to the Position Classification Standards" (Revised: 2009), available at <https://www.opm.gov/policy-data-oversight/classification-qualifications/classifying-general-schedule-positions/positionclassificationintro.pdf>.²

Who are the Civilian Federal Employees in

Hawaii - 2016

Federal Workers in Hawaii: 25,431

Percentage Who Are Veterans: 33.24%

Non-Federal Workers in Hawaii: 667,000¹

Percentage Who Are Veterans: 8.39%¹

Five Largest Federal Employers

Navy: 10,607



Army: 5,248



DHS: 1,953



Air Force: 1,787



Defense: 1,280



Race and Ethnicity

White, non-Hispanic	7,879	31.0%
Black/African American, non-Hispanic	1,179	4.6%
Hispanic or Latino	1,312	5.2%
Asian, non-Hispanic	9,813	38.6%
Two or more races	2,152	8.5%
American Indian and Alaska Native	142	0.6%
Native Hawaiian and Other Pacific Islander	2,943	11.6%

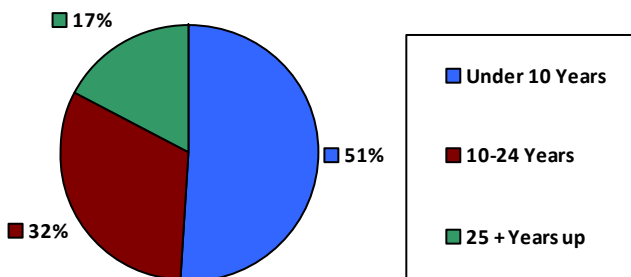
Gender

M	16,812	66.1%	<35	4,896	19.3%
			35-54	12,715	50.0%
F	8,619	33.9%	55+	7,820	30.7%

Age

<35	4,896	19.3%
35-54	12,715	50.0%
55+	7,820	30.7%

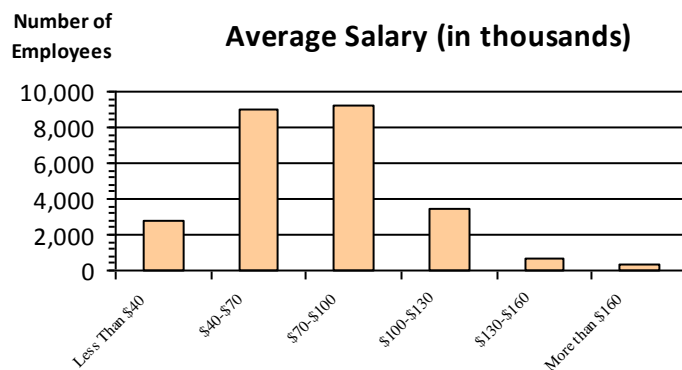
Length of Service



Educational Attainment

HS or Below	7,385	29.0%
Occupational Program	599	2.4%
Between HS and Bachelors	6,337	24.9%
Bachelors + Post Bachelors	7,446	29.3%
Masters and Post Grad	3,003	11.8%
Doctorate and Post Doc	627	2.5%

Average Salary (in thousands)



Type of Employment²

Administrative	7,843	30.8%
Professional	5,252	20.6%
Technical	4,547	17.9%
Clerical	1,369	5.4%
Other White Collar	963	3.8%
Blue Collar	5,457	21.5%

All data unless otherwise noted is provided by the US Office of Personnel Management for the December 2016 reporting period. ¹Non-Federal Workers Data calculated from the US Bureau of Labor Statistics 2015 Annual Averages https://www.bls.gov/news.release/archives/vet_03222016.pdf. ²Employment categories consistent with the definitions given by the US Office of Personnel Management "Introduction to the Position Classification Standards" 2009. For a description of the employment categories, refer to <http://www.opm.gov/policy-data-oversight/classification-qualifications/classifying-general-schedule-positions/positionclassificationintro.pdf>.

Who are the Civilian Federal Employees in

Hawaii - 2015

Federal Workers in Hawaii: 25,099

Percentage Who Are Veterans: 33.37%

Non-Federal Workers in Hawaii: 649,000¹

Percentage Who Are Veterans: 8.17%¹

Five Largest Federal Employers

Navy: 10,405



Army: 5,200



DHS: 1,894



Air Force: 1,822



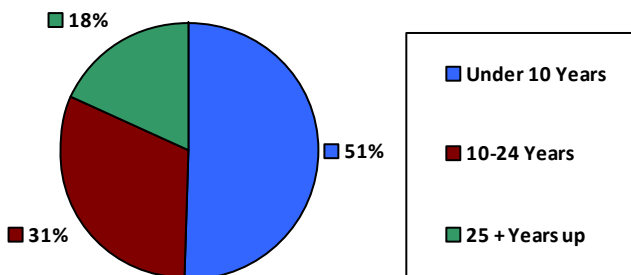
Defense: 1,282



Race and Ethnicity

White, non-Hispanic	7,909	31.5%
Black/African American, non-Hispanic	1,116	4.4%
Hispanic or Latino	1,209	4.8%
Asian, non-Hispanic	9,765	38.9%
Two or more races	2,025	8.1%
American Indian and Alaska Native	143	0.6%
Native Hawaiian and Other Pacific Islander	2,930	11.7%

Length of Service



Educational Attainment

HS or Below	7,200	28.7%
Occupational Program	621	2.5%
Between HS and Bachelors	6,396	25.5%
Bachelors + Post Bachelors	7,330	29.2%
Masters and Post Grad	2,932	11.7%
Doctorate and Post Doc	583	2.3%

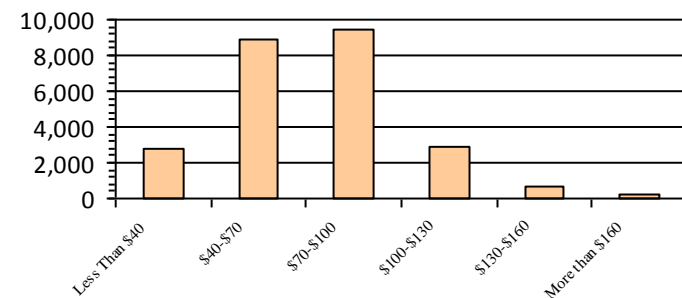
Gender

M	16,548	65.9%
F	8,549	34.1%

Age

<35	4,814	19.2%
35-54	12,588	50.1%
55+	7,697	30.7%

Average Salary (in thousands)



Type of Employment²

Administrative	7,716	30.7%
Professional	5,161	20.6%
Technical	4,634	18.5%
Clerical	1,255	5.0%
Other White Collar	1,004	4.0%
Blue Collar	5,329	21.2%

All data unless otherwise noted is provided by the US Office of Personnel Management for the December 2015 reporting period. ¹Non-Federal Workers Data calculated from the US Bureau of Labor Statistics 2015 Annual Averages https://www.bls.gov/news.release/archives/vet_03222016.pdf. ²Employment categories consistent with the definitions given by the US Office of Personnel Management "Introduction to the Position Classification Standards" 2009. For a description of the employment categories, refer to <http://www.opm.gov/policy-data-oversight/classification-qualifications/classifying-general-schedule-positions/positionclassificationintro.pdf>.

Who are the Civilian Federal Employees in

Hawaii - 2014

Federal Workers in Hawaii: 24,568

Percentage Who Are Veterans: 33.42%

Non-Federal Workers in Hawaii: 634,000¹

Percentage Who Are Veterans: 7.25%¹

Five Largest Federal Employers

Navy: 10,137



Army: 5,171



DHS: 1,921



Air Force: 1,821



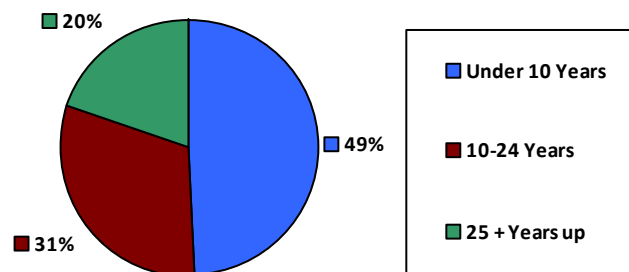
VA: 1,107



Race and Ethnicity

White, non-Hispanic	7,734	31.5%
Black/African American, non-Hispanic	1,049	4.3%
Hispanic or Latino	1,166	4.7%
Asian, non-Hispanic	9,646	39.3%
Two or more races	1,839	7.5%
American Indian and Alaska Native	163	0.7%
Native Hawaiian and Other Pacific Islander	2,970	12.1%

Length of Service



Educational Attainment

HS or Below	7,259	29.5%
Occupational Program	652	2.7%
Between HS and Bachelors	6,265	25.5%
Bachelors + Post Bachelors	7,078	28.8%
Masters and Post Grad	2,712	11.0%
Doctorate and Post Doc	562	2.3%

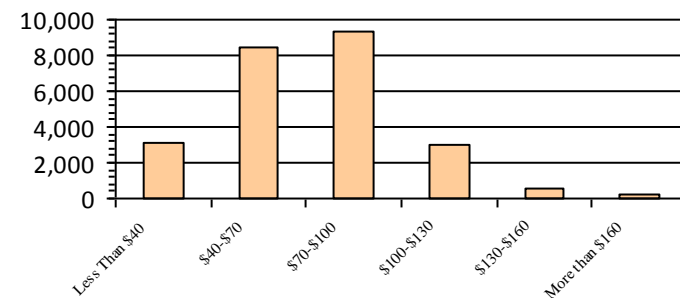
Gender

M	16,223	66.0%
F	8,345	34.0%

Age

<35	4,496	18.3%
35-54	12,338	50.2%
55+	7,734	31.5%

Average Salary (in thousands)



Type of Employment²

Administrative	7,623	31.0%
Professional	4,973	20.2%
Technical	4,630	18.8%
Clerical	1,290	5.3%
Other White Collar	960	3.9%
Blue Collar	5,091	20.7%

All data unless otherwise noted is provided by the US Office of Personnel Management for the December 2014 reporting period. ¹Non-Federal Workers Data calculated from the US Bureau of Labor Statistics 2014 Annual Averages https://www.bls.gov/news.release/archives/vet_03182015.pdf. ²Employment categories consistent with the definitions given by the US Office of Personnel Management "Introduction to the Position Classification Standards" 2009. For a description of the employment categories, refer to <http://www.opm.gov/policy-data-oversight/classification-qualifications/classifying-general-schedule-positions/positionclassificationintro.pdf>.

Who are the Civilian Federal Employees in

Hawaii - 2013

Federal Workers in Hawaii: 24,646

Percentage Who Are Veterans: 33.42%

Non-Federal Workers in Hawaii: 612,000¹

Percentage Who Are Veterans: 8.01%¹

Five Largest Federal Employers

Navy: 10,079



Army: 5,313



DHS: 1,972



Air Force: 1,780



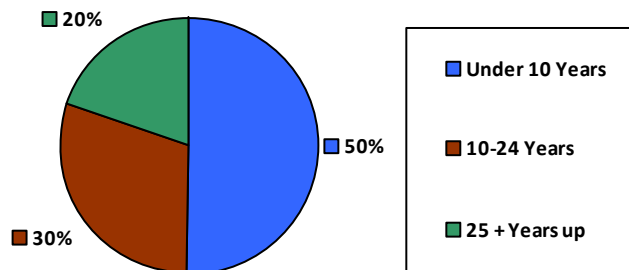
VA: 1,099



Race and Ethnicity

White, non-Hispanic	7,753	31.5%
Black/African American, non-Hispanic	1,081	4.4%
Hispanic or Latino	1,142	4.6%
Asian, non-Hispanic	9,693	39.3%
Two or more races	1,776	7.2%
American Indian and Alaska Native	175	0.7%
Native Hawaiian and Other Pacific Islander	3,026	12.3%

Length of Service



Educational Attainment

HS or Below	7,416	30.1%
Occupational Program	663	2.7%
Between HS and Bachelors	6,313	25.6%
Bachelors + Post Bachelors	7,004	28.4%
Masters and Post Grad	2,629	10.7%
Doctorate and Post Doc	580	2.4%

Gender

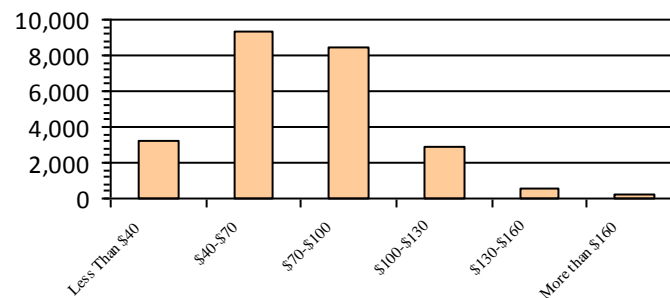
M	16,172	65.6%
F	8,474	34.4%

Age

<35	4,624	18.8%
35-54	12,476	50.6%
55+	7,546	30.6%

Number of Employees

Average Salary (in thousands)



Type of Employment²

Administrative	7,587	30.8%
Professional	4,979	20.2%
Technical	4,347	17.6%
Clerical	1,681	6.8%
Other White Collar	1,017	4.1%
Blue Collar	5,035	20.4%

All data unless otherwise noted is provided by the US Office of Personnel Management for the December 2013 reporting period. ¹Non-Federal Workers Data calculated from the US Bureau of Labor Statistics 2013 Annual Averages https://www.bls.gov/news.release/archives/vet_03202014.pdf. ²Employment categories consistent with the definitions given by the US Office of Personnel Management "Introduction to the Position Classification Standards" 2009. For a description of the employment categories, refer to <http://www.opm.gov/policy-data-oversight/classification-qualifications/classifying-general-schedule-positions/positionclassificationintro.pdf>.