

## Who are the Civilian Federal Employees in

# Georgia - 2021

**Federal Workers in Georgia: 84,269**

Percentage Who Are Veterans: 33.29%

**Non-Federal Workers in Georgia: 4,931,000<sup>1</sup>**

Percentage Who Are Veterans: 6.10%<sup>1</sup>

### Five Largest Federal Employers

Air Force: 14,866



VA: 12,781



Army: 12,236



HHS: 10,297



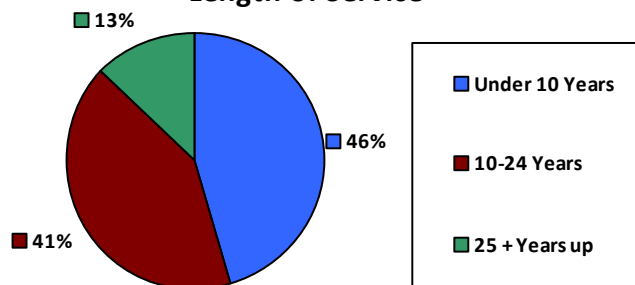
DHS: 6,664



### Race and Ethnicity

White, non-Hispanic	40,567	48.1%
Black/African American, non-Hispanic	34,998	41.5%
Hispanic or Latino	3,683	4.4%
Asian, non-Hispanic	2,864	3.4%
Two or more races	1,340	1.6%
American Indian and Alaska Native	379	0.4%
Native Hawaiian and Other Pacific Islander	154	0.2%

### Length of Service



### Educational Attainment

HS or Below	23,332	27.7%
Occupational Program	3,612	4.3%
Between HS and Bachelors	13,694	16.2%
Bachelors + Post Bachelors	23,180	27.5%
Masters and Post Grad	16,677	19.8%
Doctorate and Post Doc	3,716	4.4%

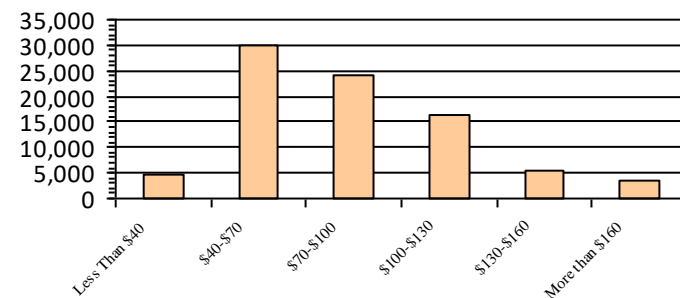
### Gender

M	43,337	51.4%
F	40,929	48.6%

### Age

<35	12,362	14.7%
35-54	45,012	53.4%
55+	26,895	31.9%

### Average Salary (in thousands)



### Type of Employment<sup>2</sup>

Administrative	20,910	24.8%
Professional	14,078	16.7%
Technical	3,657	4.3%
Clerical	2,532	3.0%
Other White Collar	9,263	11.0%
Blue Collar	9,860	11.7%

All data unless otherwise noted is provided by the US Office of Personnel Management for the December 2015 reporting period. <sup>1</sup>Non-Federal Workers Data calculated from the US Bureau of Labor Statistics 2015 Annual Averages [https://www.bls.gov/news.release/archives/vet\\_03222016.pdf](https://www.bls.gov/news.release/archives/vet_03222016.pdf). <sup>2</sup>Employment categories consistent with the definitions given by the US Office of Personnel Management "Introduction to the Position Classification Standards" 2009. For a description of the employment categories, refer to <http://www.opm.gov/policy-data-oversight/classification-qualifications/classifying-general-schedule-positions/positionclassificationintro.pdf>.

## Who are the Civilian Federal Employees in

# Georgia - 2020

**Federal Workers in Georgia: 83,336**

Percentage Who Are Veterans: 34.34%

**Non-Federal Workers in Georgia: 4,684,000<sup>1</sup>**

Percentage Who Are Veterans: 7.02%<sup>1</sup>

### Five Largest Federal Employers

Air Force: 15,274



VA: 12,788



Army: 12,505



HHS: 8,634



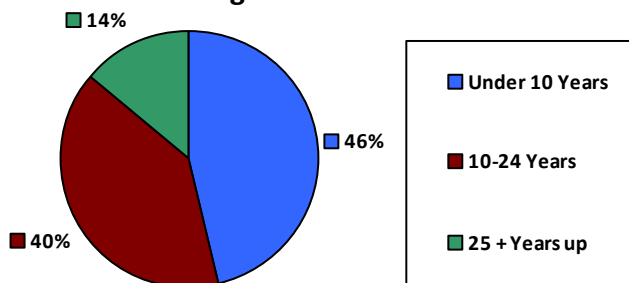
DHS: 6,460



### Race and Ethnicity

White, non-Hispanic	40,477	48.6%
Black/African American, non-Hispanic	34,582	41.5%
Hispanic or Latino	3,645	4.4%
Asian, non-Hispanic	2,614	3.1%
Two or more races	1,232	1.5%
American Indian and Alaska Native	376	0.5%
Native Hawaiian and Other Pacific Islander	143	0.2%

### Length of Service



### Educational Attainment

HS or Below	23,319	28.0%
Occupational Program	3,841	4.6%
Between HS and Bachelors	14,121	16.9%
Bachelors + Post Bachelors	22,939	27.5%
Masters and Post Grad	15,681	18.8%
Doctorate and Post Doc	3,341	4.0%

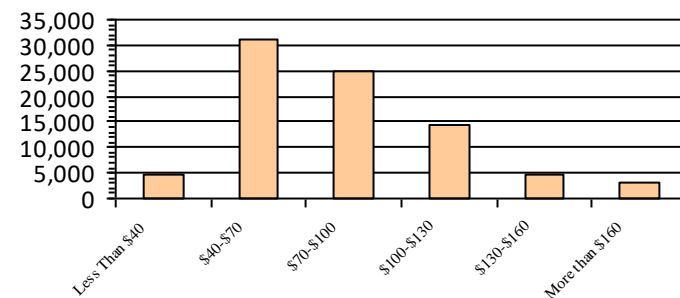
### Gender

M	43,648	52.4%
F	39,677	47.6%

### Age

<35	12,396	14.9%
35-54	44,310	53.2%
55+	26,630	32.0%

### Average Salary (in thousands)



### Type of Employment<sup>2</sup>

Administrative	33,018	39.6%
Professional	20,120	24.1%
Technical	14,093	16.9%
Clerical	3,731	4.5%
Other White Collar	2,467	3.0%
Blue Collar	9,860	11.8%

All data unless otherwise noted is provided by the US Office of Personnel Management for the December 2015 reporting period. <sup>1</sup>Non-Federal Workers Data calculated from the US Bureau of Labor Statistics 2015 Annual Averages [https://www.bls.gov/news.release/archives/vet\\_03222016.pdf](https://www.bls.gov/news.release/archives/vet_03222016.pdf). <sup>2</sup>Employment categories consistent with the definitions given by the US Office of Personnel Management "Introduction to the Position Classification Standards" 2009. For a description of the employment categories, refer to <http://www.opm.gov/policy-data-oversight/classification-qualifications/classifying-general-schedule-positions/positionclassificationintro.pdf>.

## Who are the Civilian Federal Employees in

# Georgia - 2019

**Federal Workers in Georgia: 81,769**

Percentage Who Are Veterans: 34.74%

**Non-Federal Workers in Georgia: 4,874,000<sup>1</sup>**

Percentage Who Are Veterans: 7.49%<sup>1</sup>

### Five Largest Federal Employers

Air Force: 15,240



Army: 12,095



VA: 11,890



HHS: 9,263



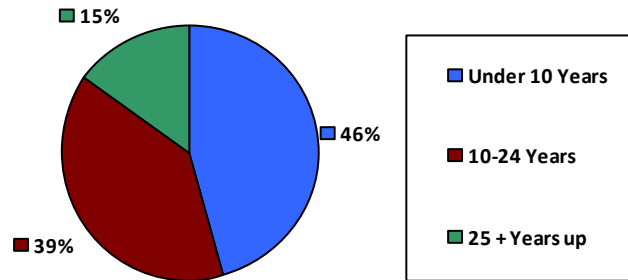
DHS: 6,460



### Race and Ethnicity

White, non-Hispanic	39,924	48.8%
Black/African American, non-Hispanic	33,355	40.8%
Hispanic or Latino	3,515	4.3%
Asian, non-Hispanic	2,549	3.1%
Two or more races	1,137	1.4%
American Indian and Alaska Native	377	0.5%
Native Hawaiian and Other Pacific Islander	124	0.2%

### Length of Service



### Educational Attainment

HS or Below	21,879	26.8%
Occupational Program	4,455	5.4%
Between HS and Bachelors	14,531	17.8%
Bachelors + Post Bachelors	22,279	27.2%
Masters and Post Grad	15,050	18.4%
Doctorate and Post Doc	3,528	4.3%

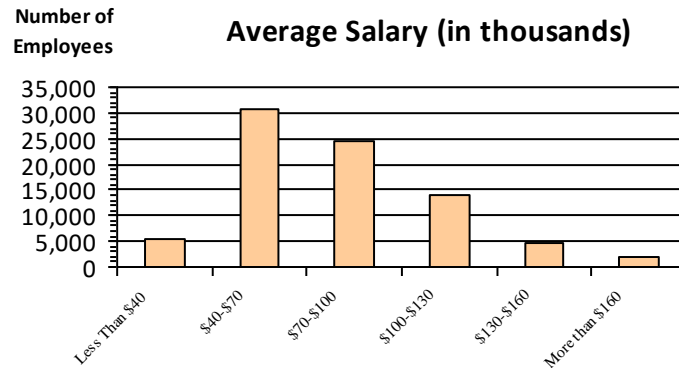
### Gender

M	43,251	52.9%
F	38,494	47.1%

### Age

<35	11,639	14.2%
35-54	43,816	53.6%
55+	26,313	32.2%

### Average Salary (in thousands)



### Type of Employment<sup>2</sup>

Administrative	32,085	39.2%
Professional	19,699	24.1%
Technical	13,623	16.7%
Clerical	3,726	4.6%
Other White Collar	2,486	3.0%
Blue Collar	10,100	12.4%

All data unless otherwise noted is provided by the US Office of Personnel Management for the December 2015 reporting period. <sup>1</sup>Non-Federal Workers Data calculated from the US Bureau of Labor Statistics 2015 Annual Averages [https://www.bls.gov/news.release/archives/vet\\_03222016.pdf](https://www.bls.gov/news.release/archives/vet_03222016.pdf). <sup>2</sup>Employment categories consistent with the definitions given by the US Office of Personnel Management "Introduction to the Position Classification Standards" 2009. For a description of the employment categories, refer to <http://www.opm.gov/policy-data-oversight/classification-qualifications/classifying-general-schedule-positions/positionclassificationintro.pdf>.

## Who are the Civilian Federal Employees in

# Georgia - 2018

**Federal Workers in Georgia: 80,254**

Percentage Who Are Veterans: 35.22%

**Non-Federal Workers in Georgia: 4,889,000<sup>1</sup>**

Percentage Who Are Veterans: 7.77%<sup>1</sup>

### Five Largest Federal Employers

Air Force: 14,995



Army: 11,968



VA: 11,558



HHS: 9,110



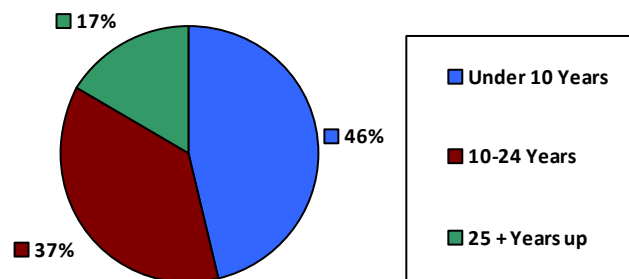
DHS: 6,212



### Race and Ethnicity

White, non-Hispanic	39,485	49.2%
Black/African American, non-Hispanic	32,616	40.6%
Hispanic or Latino	3,350	4.2%
Asian, non-Hispanic	2,470	3.1%
Two or more races	1,056	1.3%
American Indian and Alaska Native	368	0.5%
Native Hawaiian and Other Pacific Islander	117	0.1%

### Length of Service



### Educational Attainment

HS or Below	20,828	26.0%
Occupational Program	4,663	5.8%
Between HS and Bachelors	14,711	18.3%
Bachelors + Post Bachelors	21,986	27.4%
Masters and Post Grad	14,567	18.1%
Doctorate and Post Doc	3,450	4.3%

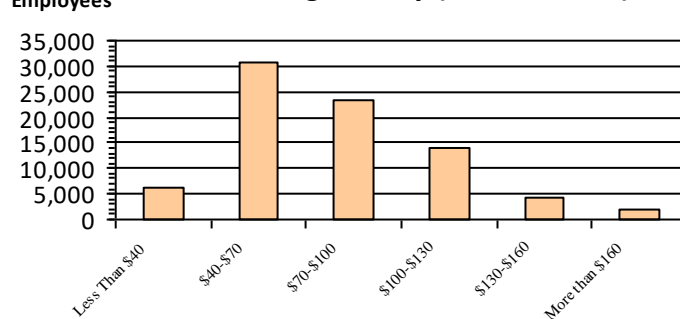
### Gender

M	42,418	52.9%
F	37,775	47.1%

### Age

<35	11,135	13.9%
35-54	43,592	54.3%
55+	25,526	31.8%

### Average Salary (in thousands)



### Type of Employment<sup>2</sup>

Administrative	31,263	39.0%
Professional	19,361	24.1%
Technical	13,854	17.3%
Clerical	3,670	4.6%
Other White Collar	2,041	2.5%
Blue Collar	10,028	12.5%

All data unless otherwise noted is provided by the US Office of Personnel Management for the December 2018 reporting period. <sup>1</sup>Non-Federal Workers Data calculated from the US Bureau of Labor Statistics 2018 Annual Averages [www.bls.gov/news.release/pdf/vet.pdf](http://www.bls.gov/news.release/pdf/vet.pdf). <sup>2</sup>Employment categories consistent with the definitions given by the US Office of Personnel Management "Introduction to the Position Classification Standards" 2009. For a description of the employment categories, refer to [www.opm.gov/policy-data-oversight/classification-qualifications/classifying-general-schedule-positions/positionclassificationintro.pdf](http://www.opm.gov/policy-data-oversight/classification-qualifications/classifying-general-schedule-positions/positionclassificationintro.pdf).

## Who are the Civilian Federal Employees in

# Georgia - 2017

**Federal Workers in Georgia: 78,982**

*Percentage Who Are Veterans: 35.68%*

**Non-Federal Workers in Georgia: 4,793,000<sup>1</sup>**

*Percentage Who Are Veterans: 9.01%<sup>2</sup>*

### Five Largest Federal Employers

Air Force: 14,505



Army: 11,718



VA: 11,184



HHS: 9,182



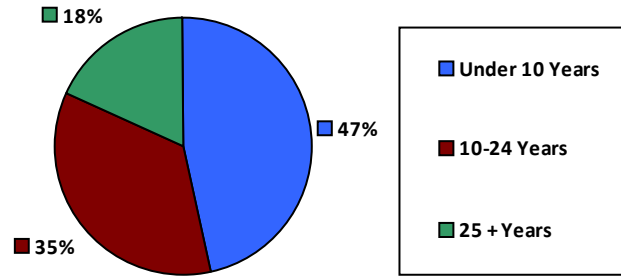
DHS: 6,018



### Race and Ethnicity

White, non-Hispanic	39,962	50.6%
Black/African American, non-Hispanic	32,014	40.5%
Hispanic or Latino	3,135	4.0%
Asian, non-Hispanic	2,413	3.1%
Two or more races	981	1.2%
American Indian and Alaska Native	363	0.5%
Native Hawaiian and Other Pacific Islander	105	0.1%

### Length of Service



### Educational Attainment

HS or Below	20,075	25.4%
Occupational Program	4,832	6.1%
Between HS and Bachelors	14,632	18.5%
Bachelors + Post Bachelors	21,813	27.6%
Masters and Post Grad	14,232	18.0%
Doctorate and Post Doc	3,359	4.3%

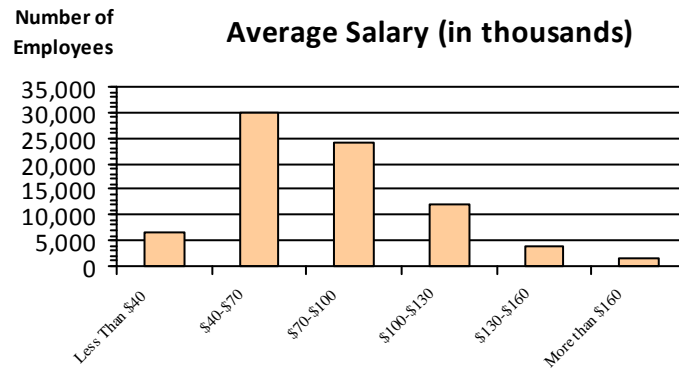
### Gender

M	41,694	52.8%
F	37,279	47.2%

### Age

<35	10,668	13.5%
35-54	43,465	55.0%
55+	24,849	31.5%

### Average Salary (in thousands)



### Type of Employment<sup>2</sup>

Administrative	30,862	39.1%
Professional	19,197	24.3%
Technical	13,625	17.2%
Clerical	3,620	4.6%
Other White Collar	2,037	2.6%
Blue Collar	9,638	12.2%

All data unless otherwise noted is provided by the US Office of Personnel Management for the December 2017 reporting period. Non-Federal Workers Data calculated from the US Bureau of Labor Statistics 2017 Annual Averages <https://www.bls.gov/news.release/vet.htm>.<sup>1</sup> Employment categories consistent with the definitions given by the US Office of Personnel Management "Introduction to the Position Classification Standards" (Revised: 2009), available at <https://www.opm.gov/policy-data-oversight/classification-qualifications/classifying-general-schedule-positions/positionclassificationintro.pdf>.<sup>2</sup>

## Who are the Civilian Federal Employees in

# Georgia - 2016

**Federal Workers in Georgia: 79,478**

Percentage Who Are Veterans: 35.69%

**Non-Federal Workers in Georgia: 4,650,000**<sup>1</sup>

Percentage Who Are Veterans: 8.21%<sup>1</sup>

### Five Largest Federal Employers

Air Force: 14,285



Army: 12,063



VA: 11,116



HHS: 9,338



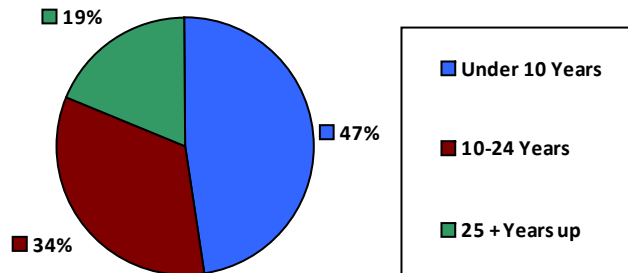
DHS: 5,719



### Race and Ethnicity

White, non-Hispanic	40,597	51.1%
Black/African American, non-Hispanic	32,131	40.4%
Hispanic or Latino	2,992	3.8%
Asian, non-Hispanic	2,386	3.0%
Two or more races	881	1.1%
American Indian and Alaska Native	377	0.5%
Native Hawaiian and Other Pacific Islander	100	0.1%

### Length of Service



### Educational Attainment

HS or Below	20,524	25.8%
Occupational Program	5,064	6.4%
Between HS and Bachelors	14,837	18.7%
Bachelors + Post Bachelors	21,934	27.6%
Masters and Post Grad	13,824	17.4%
Doctorate and Post Doc	3,254	4.1%

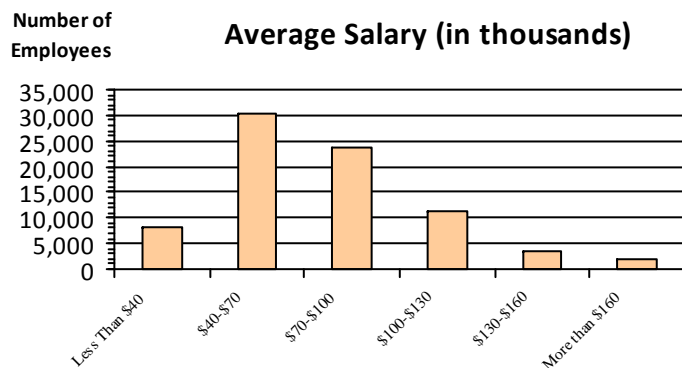
### Gender

M	41,751	52.5%
F	37,701	47.4%

### Age

<35	11,052	13.9%
35-54	44,389	55.8%
55+	24,037	30.2%

### Average Salary (in thousands)



### Type of Employment<sup>2</sup>

Administrative	30,630	38.5%
Professional	19,210	24.2%
Technical	14,238	17.9%
Clerical	3,798	4.8%
Other White Collar	2,011	2.5%
Blue Collar	9,587	12.1%

All data unless otherwise noted is provided by the US Office of Personnel Management for the December 2016 reporting period. <sup>1</sup>Non-Federal Workers Data calculated from the US Bureau of Labor Statistics 2015 Annual Averages [https://www.bls.gov/news.release/archives/vet\\_03222016.pdf](https://www.bls.gov/news.release/archives/vet_03222016.pdf). <sup>2</sup>Employment categories consistent with the definitions given by the US Office of Personnel Management "Introduction to the Position Classification Standards" 2009. For a description of the employment categories, refer to <http://www.opm.gov/policy-data-oversight/classification-qualifications/classifying-general-schedule-positions/positionclassificationintro.pdf>.

## Who are the Civilian Federal Employees in

# Georgia - 2015

**Federal Workers in Georgia: 78,030**

Percentage Who Are Veterans: 35.65%

**Non-Federal Workers in Georgia: 4,441,000<sup>1</sup>**

Percentage Who Are Veterans: 8.22%<sup>1</sup>

### Five Largest Federal Employers

Air Force: 14,223



Army: 12,182



VA: 10,351



HHS: 9,041



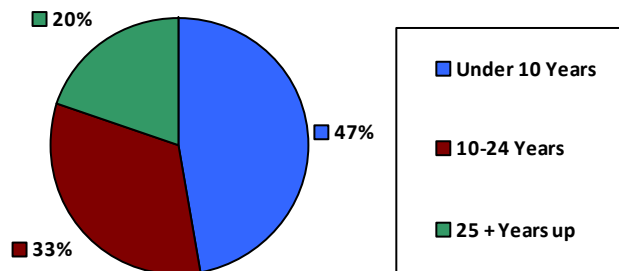
DHS: 5,332



### Race and Ethnicity

White, non-Hispanic	40,801	52.3%
Black/African American, non-Hispanic	30,844	39.5%
Hispanic or Latino	2,837	3.6%
Asian, non-Hispanic	2,301	2.9%
Two or more races	754	1.0%
American Indian and Alaska Native	396	0.5%
Native Hawaiian and Other Pacific Islander	92	0.1%

### Length of Service



### Educational Attainment

HS or Below	20,437	26.2%
Occupational Program	5,227	6.7%
Between HS and Bachelors	14,718	18.9%
Bachelors + Post Bachelors	21,602	27.7%
Masters and Post Grad	12,974	16.6%
Doctorate and Post Doc	3,035	3.9%

### Gender

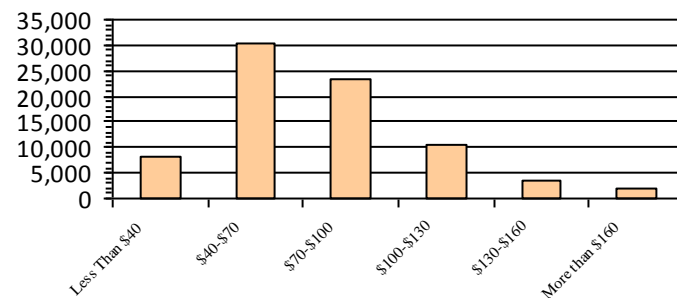
M	41,280	52.9%
F	36,750	47.1%

### Age

<35	10,883	13.9%
35-54	44,039	56.4%
55+	23,108	29.6%

Number of Employees

### Average Salary (in thousands)



### Type of Employment<sup>2</sup>

Administrative	29,780	38.2%
Professional	18,598	23.8%
Technical	14,226	18.2%
Clerical	3,606	4.6%
Other White Collar	1,998	2.6%
Blue Collar	9,818	12.6%

All data unless otherwise noted is provided by the US Office of Personnel Management for the December 2015 reporting period. <sup>1</sup>Non-Federal Workers Data calculated from the US Bureau of Labor Statistics 2015 Annual Averages [https://www.bls.gov/news.release/archives/vet\\_03222016.pdf](https://www.bls.gov/news.release/archives/vet_03222016.pdf). <sup>2</sup>Employment categories consistent with the definitions given by the US Office of Personnel Management "Introduction to the Position Classification Standards" 2009. For a description of the employment categories, refer to <http://www.opm.gov/policy-data-oversight/classification-qualifications/classifying-general-schedule-positions/positionclassificationintro.pdf>.

## Who are the Civilian Federal Employees in

# Georgia - 2014

**Federal Workers in Georgia: 77,115**

*Percentage Who Are Veterans: 35.40%*

**Non-Federal Workers in Georgia: 4,338,000<sup>1</sup>**

*Percentage Who Are Veterans: 8.62%<sup>1</sup>*

### Five Largest Federal Employers

Air Force: 14,561



Army: 12,157



VA: 9,683



HHS: 8,685



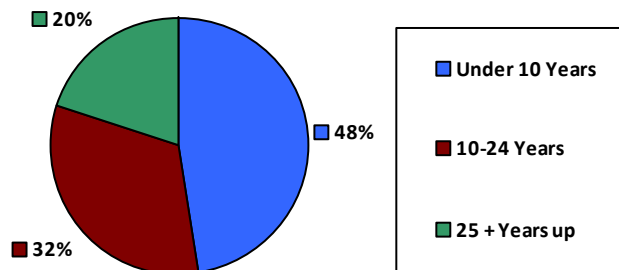
DHS: 5,305



### Race and Ethnicity

White, non-Hispanic	41,071	53.3%
Black/African American, non-Hispanic	29,898	38.8%
Hispanic or Latino	2,731	3.5%
Asian, non-Hispanic	2,202	2.9%
Two or more races	705	0.9%
American Indian and Alaska Native	414	0.5%
Native Hawaiian and Other Pacific Islander	89	0.1%

### Length of Service



### Educational Attainment

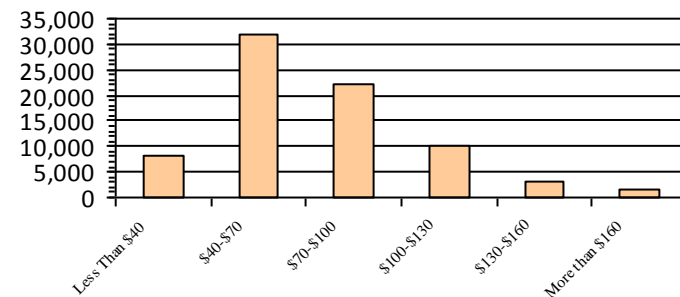
HS or Below	20,690	26.8%
Occupational Program	5,406	7.0%
Between HS and Bachelors	14,772	19.2%
Bachelors + Post Bachelors	21,269	27.6%
Masters and Post Grad	12,094	15.7%
Doctorate and Post Doc	2,840	3.7%

### Gender

### Age

Gender	Count	Percentage	Age Group	Count	Percentage
M	41,010	53.2%	<35	10,956	14.2%
			35-54	43,995	57.0%
F	36,105	46.8%	55+	22,164	28.7%

### Average Salary (in thousands)



### Type of Employment<sup>2</sup>

Administrative	29,608	38.4%
Professional	17,960	23.3%
Technical	14,224	18.4%
Clerical	3,525	4.6%
Other White Collar	1,814	2.4%
Blue Collar	9,980	12.9%

All data unless otherwise noted is provided by the US Office of Personnel Management for the December 2014 reporting period. <sup>1</sup>Non-Federal Workers Data calculated from the US Bureau of Labor Statistics 2014 Annual Averages [https://www.bls.gov/news.release/archives/vet\\_03182015.pdf](https://www.bls.gov/news.release/archives/vet_03182015.pdf). <sup>2</sup>Employment categories consistent with the definitions given by the US Office of Personnel Management "Introduction to the Position Classification Standards" 2009. For a description of the employment categories, refer to <http://www.opm.gov/policy-data-oversight/classification-qualifications/classifying-general-schedule-positions/positionclassificationintro.pdf>.



## Who are the Civilian Federal Employees in

# Georgia - 2013

**Federal Workers in Georgia: 77,887**

Percentage Who Are Veterans: 34.69%

**Non-Federal Workers in Georgia: 4,334,000<sup>1</sup>**

Percentage Who Are Veterans: 9.30%<sup>1</sup>

### Five Largest Federal Employers

Air Force: 14,814



Army: 12,020



VA: 9,175



HHS: 9,086



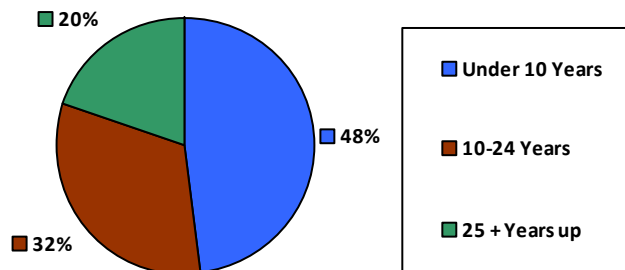
DHS: 5,472



### Race and Ethnicity

White, non-Hispanic	41,913	53.8%
Black/African American, non-Hispanic	29,959	38.5%
Hispanic or Latino	2,692	3.5%
Asian, non-Hispanic	2,169	2.8%
Two or more races	637	0.8%
American Indian and Alaska Native	429	0.6%
Native Hawaiian and Other Pacific Islander	81	0.1%

### Length of Service



### Educational Attainment

HS or Below	21,344	27.4%
Occupational Program	5,512	7.1%
Between HS and Bachelors	15,096	19.4%
Bachelors + Post Bachelors	21,279	27.3%
Masters and Post Grad	11,766	15.1%
Doctorate and Post Doc	2,838	3.6%

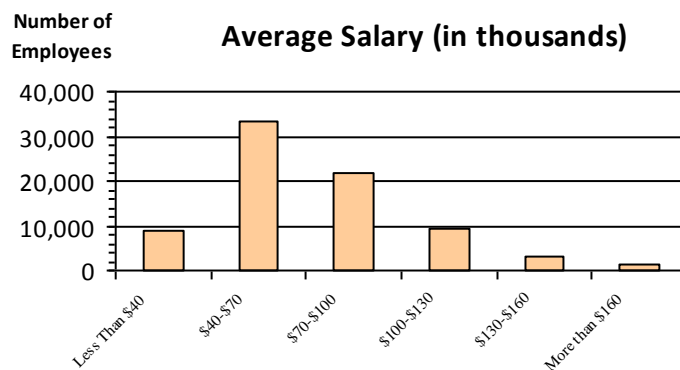
### Gender

M	41,319	53.0%
F	36,568	46.9%

### Age

<35	11,750	15.1%
35-54	44,629	57.3%
55+	21,508	27.6%

### Average Salary (in thousands)



### Type of Employment<sup>2</sup>

Administrative	29,525	37.9%
Professional	18,033	23.2%
Technical	14,172	18.2%
Clerical	4,152	5.3%
Other White Collar	1,786	2.3%
Blue Collar	10,213	13.1%

All data unless otherwise noted is provided by the US Office of Personnel Management for the December 2013 reporting period. <sup>1</sup>Non-Federal Workers Data calculated from the US Bureau of Labor Statistics 2013 Annual Averages [https://www.bls.gov/news.release/archives/vet\\_03202014.pdf](https://www.bls.gov/news.release/archives/vet_03202014.pdf). <sup>2</sup>Employment categories consistent with the definitions given by the US Office of Personnel Management "Introduction to the Position Classification Standards" 2009. For a description of the employment categories, refer to <http://www.opm.gov/policy-data-oversight/classification-qualifications/classifying-general-schedule-positions/positionclassificationintro.pdf>.