

Who are the Civilian Federal Employees in District Of Columbia - 2021

Federal Workers in District Of Columbia: 153,117

Percentage Who Are Veterans: 17.44%

Non-Federal Workers in District Of Columbia: 379,000¹

Percentage Who Are Veterans: 4.22%¹

Five Largest Federal Employers

DHS: 20,189



Justice: 16,626



Navy: 10,525



State: 9,601



Treasury: 8,382



Race and Ethnicity

White, non-Hispanic	81,953	53.5%
Black/African American, non-Hispanic	46,693	30.5%
Hispanic or Latino	8,340	5.4%
Asian, non-Hispanic	11,360	7.4%
Two or more races	3,395	2.2%
American Indian and Alaska Native	801	0.5%
Native Hawaiian and Other Pacific Islander	245	0.2%

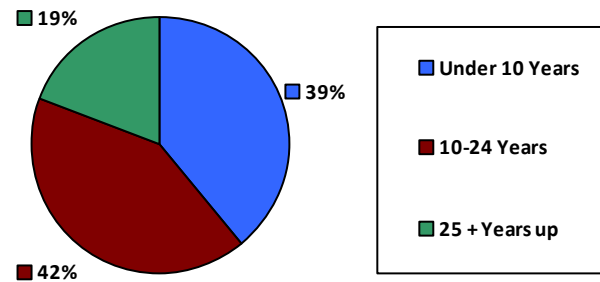
Gender

M	75,816	49.5%
F	77,300	50.5%

Age

<35	24,225	15.8%
35-54	83,263	54.4%
55+	45,629	29.8%

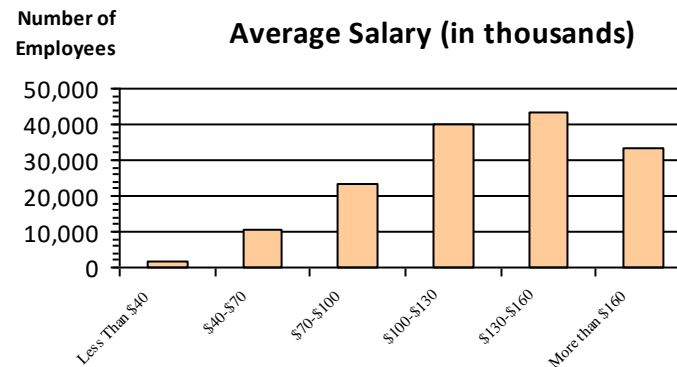
Length of Service



Educational Attainment

HS or Below	29,963	19.6%
Occupational Program	1,401	0.9%
Between HS and Bachelors	16,180	10.6%
Bachelors + Post Bachelors	56,677	37.0%
Masters and Post Grad	39,796	26.0%
Doctorate and Post Doc	8,589	5.6%

Average Salary (in thousands)



Type of Employment²

Administrative	44,024	28.7%
Professional	4,538	3.0%
Technical	1,597	1.0%
Clerical	5,284	3.5%
Other White Collar	2,928	1.9%
Blue Collar	3,062	2.0%

All data unless otherwise noted is provided by the US Office of Personnel Management for the December 2015 reporting period. ¹Non-Federal Workers Data calculated from the US Bureau of Labor Statistics 2015 Annual Averages https://www.bls.gov/news.release/archives/vet_03222016.pdf. ²Employment categories consistent with the definitions given by the US Office of Personnel Management "Introduction to the Position Classification Standards" 2009. For a description of the employment categories, refer to <http://www.opm.gov/policy-data-oversight/classification-qualifications/classifying-general-schedule-positions/positionclassificationintro.pdf>.

Who are the Civilian Federal Employees in District Of Columbia - 2020

Federal Workers in District Of Columbia: 152,643

Percentage Who Are Veterans: 17.69%

Non-Federal Workers in District Of Columbia: 371,000¹

Percentage Who Are Veterans: 3.23%¹

Five Largest Federal Employers

DHS: 19,972



Justice: 16,611



Navy: 10,836



State: 9,272



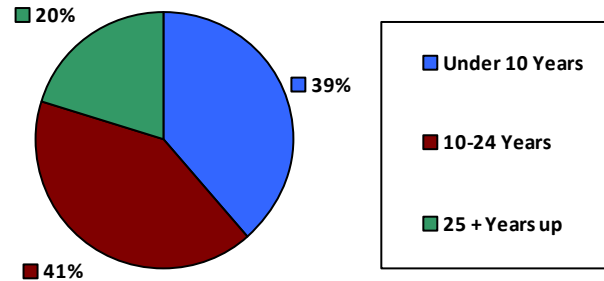
VA: 8,644



Race and Ethnicity

White, non-Hispanic	82,893	54.3%
Black/African American, non-Hispanic	46,584	30.5%
Hispanic or Latino	7,851	5.1%
Asian, non-Hispanic	10,892	7.1%
Two or more races	3,155	2.1%
American Indian and Alaska Native	779	0.5%
Native Hawaiian and Other Pacific Islander	234	0.2%

Length of Service



Educational Attainment

HS or Below	30,040	19.7%
Occupational Program	1,490	1.0%
Between HS and Bachelors	16,734	11.0%
Bachelors + Post Bachelors	56,916	37.3%
Masters and Post Grad	38,726	25.3%
Doctorate and Post Doc	8,208	5.4%

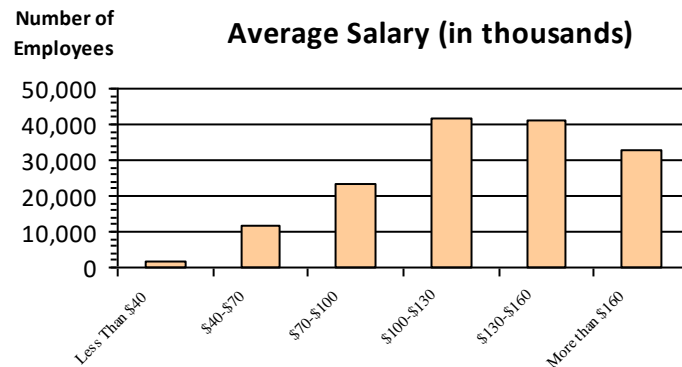
Gender

M	76,436	50.1%
F	76,204	49.9%

Age

<35	24,830	16.3%
35-54	82,239	53.9%
55+	45,574	29.9%

Average Salary (in thousands)



Type of Employment²

Administrative	94,221	61.7%
Professional	43,372	28.4%
Technical	4,753	3.1%
Clerical	1,769	1.2%
Other White Collar	5,390	3.5%
Blue Collar	3,062	2.0%

All data unless otherwise noted is provided by the US Office of Personnel Management for the December 2015 reporting period. ¹Non-Federal Workers Data calculated from the US Bureau of Labor Statistics 2015 Annual Averages https://www.bls.gov/news.release/archives/vet_03222016.pdf. ²Employment categories consistent with the definitions given by the US Office of Personnel Management "Introduction to the Position Classification Standards" 2009. For a description of the employment categories, refer to <http://www.opm.gov/policy-data-oversight/classification-qualifications/classifying-general-schedule-positions/positionclassificationintro.pdf>.

Who are the Civilian Federal Employees in

District Of Columbia - 2019

Federal Workers in District Of Columbia: 151,066

Percentage Who Are Veterans: 17.90%

Non-Federal Workers in District Of Columbia: 387,000¹

Percentage Who Are Veterans: 2.84%¹

Five Largest Federal Employers

DHS: 21,319



Justice: 16,791



Navy: 10,728



State: 8,972



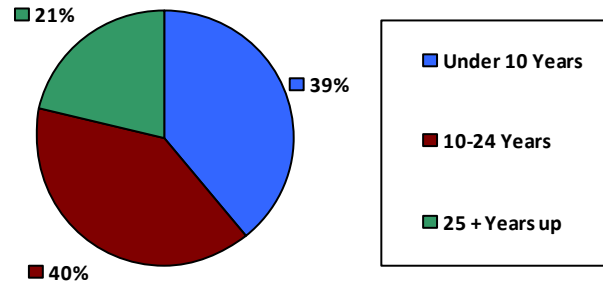
VA: 8,472



Race and Ethnicity

White, non-Hispanic	81,675	54.1%
Black/African American, non-Hispanic	46,405	30.7%
Hispanic or Latino	7,460	4.9%
Asian, non-Hispanic	10,396	6.9%
Two or more races	2,931	1.9%
American Indian and Alaska Native	758	0.5%
Native Hawaiian and Other Pacific Islander	224	0.1%

Length of Service



Educational Attainment

HS or Below	29,320	19.4%
Occupational Program	1,779	1.2%
Between HS and Bachelors	17,383	11.5%
Bachelors + Post Bachelors	56,410	37.3%
Masters and Post Grad	37,703	24.9%
Doctorate and Post Doc	7,951	5.3%

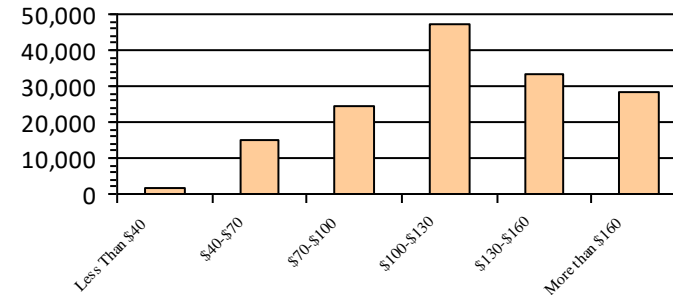
Gender

M	75,654	50.1%
F	75,408	49.9%

Age

<35	24,107	16.0%
35-54	81,988	54.3%
55+	44,971	29.8%

Average Salary (in thousands)



Type of Employment²

Administrative	93,216	61.7%
Professional	42,287	28.0%
Technical	4,917	3.3%
Clerical	1,963	1.3%
Other White Collar	5,419	3.6%
Blue Collar	3,189	2.1%

All data unless otherwise noted is provided by the US Office of Personnel Management for the December 2015 reporting period. ¹Non-Federal Workers Data calculated from the US Bureau of Labor Statistics 2015 Annual Averages https://www.bls.gov/news.release/archives/vet_03222016.pdf. ²Employment categories consistent with the definitions given by the US Office of Personnel Management "Introduction to the Position Classification Standards" 2009. For a description of the employment categories, refer to <http://www.opm.gov/policy-data-oversight/classification-qualifications/classifying-general-schedule-positions/positionclassificationintro.pdf>.

Who are the Civilian Federal Employees in District Of Columbia - 2018

Federal Workers in District Of Columbia: 150,405

Percentage Who Are Veterans: 17.95%

Non-Federal Workers in District Of Columbia: 382,000¹

Percentage Who Are Veterans: 3.40%¹

Five Largest Federal Employers

DHS: 20,870



Justice: 17,174



Navy: 9,953



State: 8,923



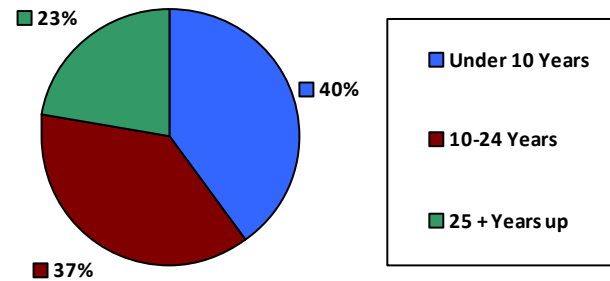
Treasury: 8,034



Race and Ethnicity

White, non-Hispanic	81,664	54.3%
Black/African American, non-Hispanic	46,378	30.8%
Hispanic or Latino	7,218	4.8%
Asian, non-Hispanic	10,115	6.7%
Two or more races	2,772	1.8%
American Indian and Alaska Native	773	0.5%
Native Hawaiian and Other Pacific Islander	232	0.2%

Length of Service



Educational Attainment

HS or Below	28,972	19.3%
Occupational Program	1,899	1.3%
Between HS and Bachelors	17,859	11.9%
Bachelors + Post Bachelors	56,292	37.4%
Masters and Post Grad	37,087	24.6%
Doctorate and Post Doc	7,844	5.2%

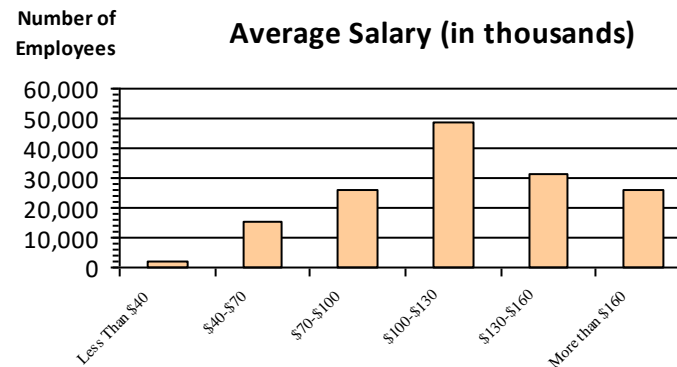
Gender

M	75,410	50.1%
F	74,965	49.8%

Age

<35	24,346	16.2%
35-54	81,820	54.4%
55+	44,239	29.4%

Average Salary (in thousands)



Type of Employment²

Administrative	92,154	61.3%
Professional	42,311	28.1%
Technical	5,200	3.5%
Clerical	2,142	1.4%
Other White Collar	5,281	3.5%
Blue Collar	3,222	2.1%

All data unless otherwise noted is provided by the US Office of Personnel Management for the December 2018 reporting period. ¹Non-Federal Workers Data calculated from the US Bureau of Labor Statistics 2018 Annual Averages www.bls.gov/news.release/pdf/vet.pdf. ²Employment categories consistent with the definitions given by the US Office of Personnel Management "Introduction to the Position Classification Standards" 2009. For a description of the employment categories, refer to www.opm.gov/policy-data-oversight/classification-qualifications/classifying-general-schedule-positions/positionclassificationintro.pdf.

Who are the Civilian Federal Employees in District Of Columbia - 2017

Federal Workers in District Of Columbia: 153,440

Percentage Who Are Veterans: 17.91%

Non-Federal Workers in District Of Columbia: 374,000¹

Percentage Who Are Veterans: 3.60%²

Five Largest Federal Employers

DHS: 20,391



Justice: 17,602



Navy: 9,875



State: 9,283



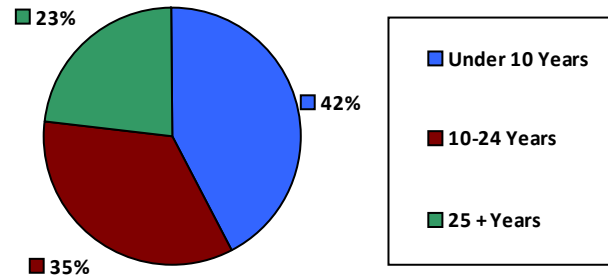
Treasury: 8,280



Race and Ethnicity

White, non-Hispanic	84,734	55.2%
Black/African American, non-Hispanic	47,788	31.1%
Hispanic or Latino	7,012	4.6%
Asian, non-Hispanic	10,088	6.6%
Two or more races	2,646	1.7%
American Indian and Alaska Native	797	0.5%
Native Hawaiian and Other Pacific Islander	249	0.2%

Length of Service



Educational Attainment

HS or Below	29,436	19.2%
Occupational Program	2,044	1.3%
Between HS and Bachelors	18,506	12.1%
Bachelors + Post Bachelors	57,536	37.5%
Masters and Post Grad	37,513	24.4%
Doctorate and Post Doc	7,971	5.2%

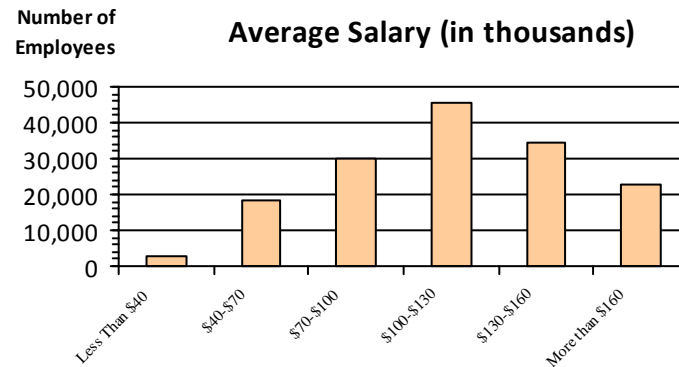
Gender

M	77,042	50.2%
F	76,379	49.8%

Age

<35	26,063	17.0%
35-54	83,408	54.4%
55+	43,969	28.7%

Average Salary (in thousands)



Type of Employment²

Administrative	93,569	61.0%
Professional	43,302	28.2%
Technical	5,619	3.7%
Clerical	2,298	1.5%
Other White Collar	5,221	3.4%
Blue Collar	3,353	2.2%

All data unless otherwise noted is provided by the US Office of Personnel Management for the December 2017 reporting period. Non-Federal Workers Data calculated from the US Bureau of Labor Statistics 2017 Annual Averages <https://www.bls.gov/news.release/vet.htm>. ¹ Employment categories consistent with the definitions given by the US Office of Personnel Management "Introduction to the Position Classification Standards" (Revised: 2009), available at <https://www.opm.gov/policy-data-oversight/classification-qualifications/classifying-general-schedule-positions/positionclassificationintro.pdf>. ²

Who are the Civilian Federal Employees in District Of Columbia - 2016

Federal Workers in District Of Columbia: 157,914

Percentage Who Are Veterans: 17.61%

Non-Federal Workers in District Of Columbia: 369,000¹

Percentage Who Are Veterans: 4.61%¹

Five Largest Federal Employers

DHS: 19,534



Justice: 17,931



State: 10,167



Navy: 10,156



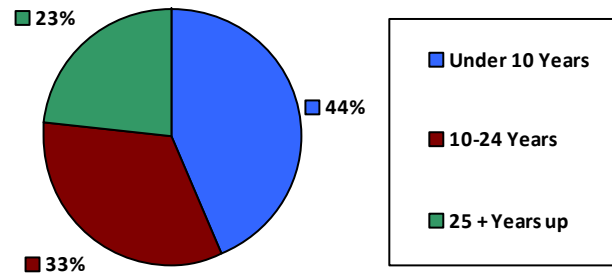
Treasury: 8,721



Race and Ethnicity

White, non-Hispanic	87,745	55.6%
Black/African American, non-Hispanic	49,118	31.1%
Hispanic or Latino	7,063	4.5%
Asian, non-Hispanic	10,209	6.5%
Two or more races	2,555	1.6%
American Indian and Alaska Native	884	0.6%
Native Hawaiian and Other Pacific Islander	251	0.2%

Length of Service



Educational Attainment

HS or Below	29,822	18.9%
Occupational Program	2,210	1.4%
Between HS and Bachelors	19,238	12.2%
Bachelors + Post Bachelors	59,407	37.6%
Masters and Post Grad	38,591	24.4%
Doctorate and Post Doc	8,232	5.2%

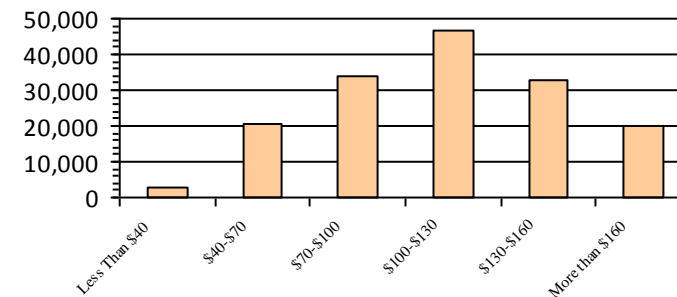
Gender

M	78,779	49.9%
F	79,122	50.1%

Age

<35	28,702	18.2%
35-54	85,101	53.9%
55+	44,111	27.9%

Average Salary (in thousands)



Type of Employment²

Administrative	95,971	60.8%
Professional	44,535	28.2%
Technical	6,079	3.8%
Clerical	2,491	1.6%
Other White Collar	5,287	3.3%
Blue Collar	3,442	2.2%

All data unless otherwise noted is provided by the US Office of Personnel Management for the December 2016 reporting period. ¹Non-Federal Workers Data calculated from the US Bureau of Labor Statistics 2015 Annual Averages https://www.bls.gov/news.release/archives/vet_03222016.pdf. ²Employment categories consistent with the definitions given by the US Office of Personnel Management "Introduction to the Position Classification Standards" 2009. For a description of the employment categories, refer to <http://www.opm.gov/policy-data-oversight/classification-qualifications/classifying-general-schedule-positions/positionclassificationintro.pdf>.

Who are the Civilian Federal Employees in District Of Columbia - 2015

Federal Workers in District Of Columbia: 155,664

Percentage Who Are Veterans: 17.33%

Non-Federal Workers in District Of Columbia: 357,000¹

Percentage Who Are Veterans: 3.92%¹

Five Largest Federal Employers

DHS: 18,196



Justice: 17,488



Navy: 10,260



State: 10,077



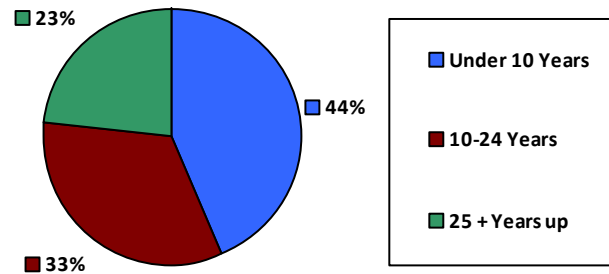
Treasury: 8,693



Race and Ethnicity

White, non-Hispanic	87,274	56.1%
Black/African American, non-Hispanic	48,545	31.2%
Hispanic or Latino	6,678	4.3%
Asian, non-Hispanic	9,759	6.3%
Two or more races	2,257	1.4%
American Indian and Alaska Native	887	0.6%
Native Hawaiian and Other Pacific Islander	240	0.2%

Length of Service



Educational Attainment

HS or Below	29,090	18.7%
Occupational Program	2,308	1.5%
Between HS and Bachelors	19,447	12.5%
Bachelors + Post Bachelors	59,078	37.9%
Masters and Post Grad	37,265	23.9%
Doctorate and Post Doc	8,069	5.2%

Gender

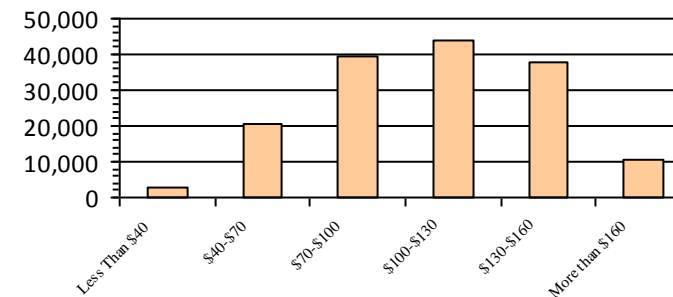
M	77,625	49.9%
F	78,038	50.1%

Age

<35	28,462	18.3%
35-54	84,295	54.1%
55+	42,907	27.6%

Number of Employees

Average Salary (in thousands)



Type of Employment²

Administrative	93,702	60.2%
Professional	44,197	28.4%
Technical	6,286	4.0%
Clerical	2,663	1.7%
Other White Collar	5,237	3.4%
Blue Collar	3,479	2.2%

All data unless otherwise noted is provided by the US Office of Personnel Management for the December 2015 reporting period. ¹Non-Federal Workers Data calculated from the US Bureau of Labor Statistics 2015 Annual Averages https://www.bls.gov/news.release/archives/vet_03222016.pdf. ²Employment categories consistent with the definitions given by the US Office of Personnel Management "Introduction to the Position Classification Standards" 2009. For a description of the employment categories, refer to <http://www.opm.gov/policy-data-oversight/classification-qualifications/classifying-general-schedule-positions/positionclassificationintro.pdf>.

Who are the Civilian Federal Employees in District Of Columbia - 2014

Federal Workers in District Of Columbia: 154,450

Percentage Who Are Veterans: 16.97%

Non-Federal Workers in District Of Columbia: 346,000¹

Percentage Who Are Veterans: 4.05%¹

Five Largest Federal Employers

DHS: 18,132



Justice: 17,161



State: 10,212



Navy: 9,904



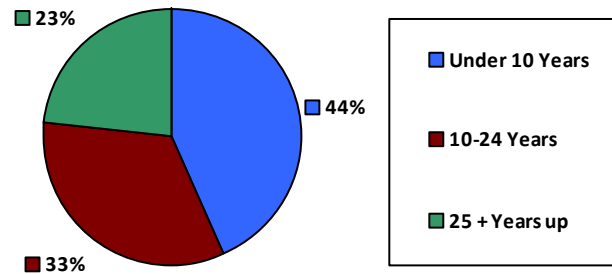
Treasury: 8,758



Race and Ethnicity

White, non-Hispanic	87,088	56.4%
Black/African American, non-Hispanic	48,374	31.3%
Hispanic or Latino	6,376	4.1%
Asian, non-Hispanic	9,461	6.1%
Two or more races	2,044	1.3%
American Indian and Alaska Native	872	0.6%
Native Hawaiian and Other Pacific Islander	221	0.1%

Length of Service



Educational Attainment

HS or Below	28,901	18.7%
Occupational Program	2,395	1.6%
Between HS and Bachelors	19,955	12.9%
Bachelors + Post Bachelors	58,670	38.0%
Masters and Post Grad	36,244	23.4%
Doctorate and Post Doc	7,866	5.1%

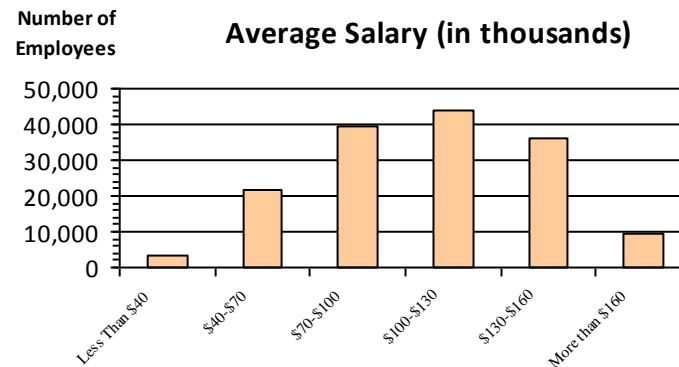
Gender

M	76,964	49.8%
F	77,486	50.2%

Age

<35	28,786	18.6%
35-54	83,534	54.1%
55+	42,130	27.3%

Average Salary (in thousands)



Type of Employment²

Administrative	92,909	60.1%
Professional	43,410	28.1%
Technical	6,704	4.3%
Clerical	2,843	1.8%
Other White Collar	4,945	3.2%
Blue Collar	3,571	2.3%

All data unless otherwise noted is provided by the US Office of Personnel Management for the December 2014 reporting period. ¹Non-Federal Workers Data calculated from the US Bureau of Labor Statistics 2014 Annual Averages https://www.bls.gov/news.release/archives/vet_03182015.pdf. ²Employment categories consistent with the definitions given by the US Office of Personnel Management "Introduction to the Position Classification Standards" 2009. For a description of the employment categories, refer to <http://www.opm.gov/policy-data-oversight/classification-qualifications/classifying-general-schedule-positions/positionclassificationintro.pdf>.

Who are the Civilian Federal Employees in District Of Columbia - 2013

Federal Workers in District Of Columbia: 154,698

Percentage Who Are Veterans: 16.58%

Non-Federal Workers in District Of Columbia: 337,000¹

Percentage Who Are Veterans: 4.45%¹

Five Largest Federal Employers

DHS: 18,194



Justice: 17,501



State: 10,436



Navy: 9,871



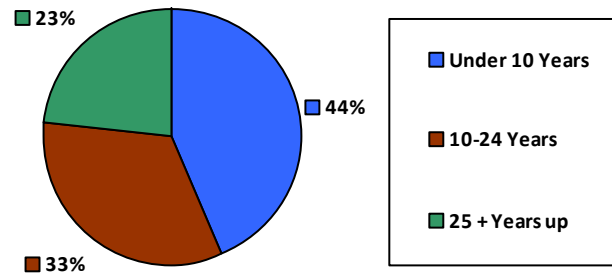
Treasury: 8,846



Race and Ethnicity

White, non-Hispanic	87,663	56.7%
Black/African American, non-Hispanic	48,790	31.5%
Hispanic or Latino	6,192	4.0%
Asian, non-Hispanic	9,179	5.9%
Two or more races	1,787	1.2%
American Indian and Alaska Native	860	0.6%
Native Hawaiian and Other Pacific Islander	172	0.1%

Length of Service



Educational Attainment

HS or Below	29,235	18.9%
Occupational Program	2,510	1.6%
Between HS and Bachelors	20,543	13.3%
Bachelors + Post Bachelors	58,794	38.0%
Masters and Post Grad	35,574	23.0%
Doctorate and Post Doc	7,705	5.0%

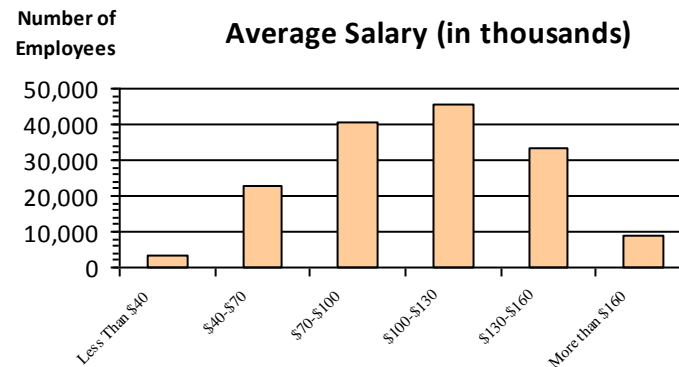
Gender

M	76,885	49.7%
F	77,813	50.3%

Age

<35	29,596	19.1%
35-54	83,209	53.8%
55+	41,893	27.1%

Average Salary (in thousands)



Type of Employment²

Administrative	92,327	59.7%
Professional	43,213	27.9%
Technical	7,231	4.7%
Clerical	3,111	2.0%
Other White Collar	5,044	3.3%
Blue Collar	3,723	2.4%

All data unless otherwise noted is provided by the US Office of Personnel Management for the December 2013 reporting period. ¹Non-Federal Workers Data calculated from the US Bureau of Labor Statistics 2013 Annual Averages https://www.bls.gov/news.release/archives/vet_03202014.pdf. ²Employment categories consistent with the definitions given by the US Office of Personnel Management "Introduction to the Position Classification Standards" 2009. For a description of the employment categories, refer to <http://www.opm.gov/policy-data-oversight/classification-qualifications/classifying-general-schedule-positions/positionclassificationintro.pdf>.