

## Who are the Civilian Federal Employees in

# Delaware - 2021

**Federal Workers in Delaware: 3,563**

Percentage Who Are Veterans: 36.48%

**Non-Federal Workers in Delaware: 457,000**<sup>1</sup>

Percentage Who Are Veterans: 6.35%<sup>1</sup>

### Five Largest Federal Employers

VA: 1,247



Air Force: 1,031



Army: 239



Agriculture: 229



Justice: 157



### Race and Ethnicity

White, non-Hispanic	2,119	59.5%
Black/African American, non-Hispanic	1,022	28.7%
Hispanic or Latino	192	5.4%
Asian, non-Hispanic	140	3.9%
Two or more races	44	1.2%
American Indian and Alaska Native	13	0.4%
Native Hawaiian and Other Pacific Islander	2	0.1%

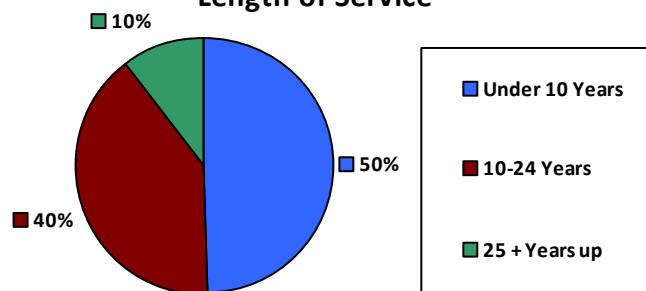
### Gender

M	1,890	53.0%
F	1,673	47.0%

### Age

<35	497	13.9%
35-54	1,871	52.5%
55+	1,195	33.5%

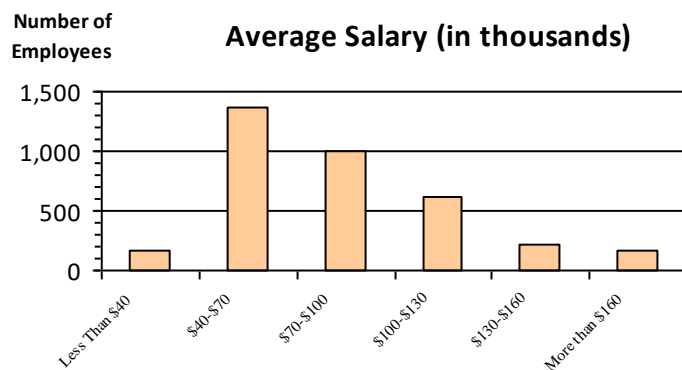
### Length of Service



### Educational Attainment

HS or Below	1,189	33.4%
Occupational Program	65	1.8%
Between HS and Bachelors	617	17.3%
Bachelors + Post Bachelors	1,065	29.9%
Masters and Post Grad	536	15.0%
Doctorate and Post Doc	87	2.4%

### Average Salary (in thousands)



### Type of Employment<sup>2</sup>

Administrative	900	25.3%
Professional	669	18.8%
Technical	276	7.7%
Clerical	49	1.4%
Other White Collar	563	15.8%
Blue Collar	566	15.9%

All data unless otherwise noted is provided by the US Office of Personnel Management for the December 2015 reporting period. <sup>1</sup>Non-Federal Workers Data calculated from the US Bureau of Labor Statistics 2015 Annual Averages [https://www.bls.gov/news.release/archives/vet\\_03222016.pdf](https://www.bls.gov/news.release/archives/vet_03222016.pdf). <sup>2</sup>Employment categories consistent with the definitions given by the US Office of Personnel Management "Introduction to the Position Classification Standards" 2009. For a description of the employment categories, refer to <http://www.opm.gov/policy-data-oversight/classification-qualifications/classifying-general-schedule-positions/positionclassificationintro.pdf>.

## Who are the Civilian Federal Employees in

# Delaware - 2020

**Federal Workers in Delaware: 3,599**

Percentage Who Are Veterans: 36.40%

**Non-Federal Workers in Delaware: 438,000**<sup>1</sup>

Percentage Who Are Veterans: 7.31%<sup>1</sup>

### Five Largest Federal Employers

VA: 1,253



Air Force: 1,065



Agriculture: 258



Army: 244



Justice: 149



### Race and Ethnicity

White, non-Hispanic	2,148	59.7%
Black/African American, non-Hispanic	1,038	28.8%
Hispanic or Latino	182	5.1%
Asian, non-Hispanic	137	3.8%
Two or more races	48	1.3%
American Indian and Alaska Native	17	0.5%
Native Hawaiian and Other Pacific Islander	4	0.1%

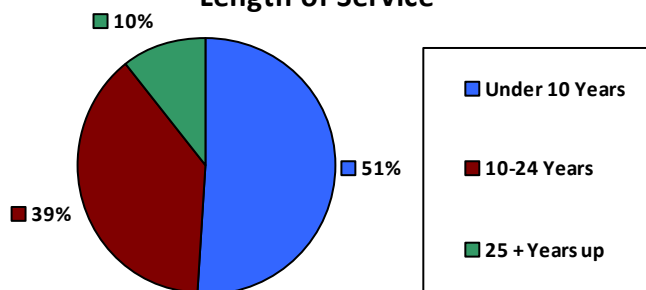
### Gender

M	1,907	53.0%
F	1,692	47.0%

### Age

<35	558	15.5%
35-54	1,866	51.8%
55+	1,175	32.6%

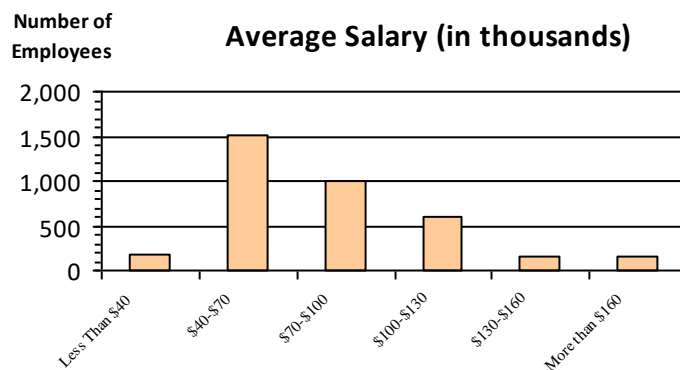
### Length of Service



### Educational Attainment

HS or Below	1,264	35.1%
Occupational Program	56	1.6%
Between HS and Bachelors	617	17.1%
Bachelors + Post Bachelors	1,048	29.1%
Masters and Post Grad	530	14.7%
Doctorate and Post Doc	82	2.3%

### Average Salary (in thousands)



### Type of Employment<sup>2</sup>

Administrative	1,090	30.3%
Professional	884	24.6%
Technical	713	19.8%
Clerical	266	7.4%
Other White Collar	72	2.0%
Blue Collar	566	15.7%

All data unless otherwise noted is provided by the US Office of Personnel Management for the December 2015 reporting period. <sup>1</sup>Non-Federal Workers Data calculated from the US Bureau of Labor Statistics 2015 Annual Averages [https://www.bls.gov/news.release/archives/vet\\_03222016.pdf](https://www.bls.gov/news.release/archives/vet_03222016.pdf). <sup>2</sup>Employment categories consistent with the definitions given by the US Office of Personnel Management "Introduction to the Position Classification Standards" 2009. For a description of the employment categories, refer to <http://www.opm.gov/policy-data-oversight/classification-qualifications/classifying-general-schedule-positions/positionclassificationintro.pdf>.

## Who are the Civilian Federal Employees in

# Delaware - 2019

**Federal Workers in Delaware: 3,435**

Percentage Who Are Veterans: 37.41%

**Non-Federal Workers in Delaware: 465,000**<sup>1</sup>

Percentage Who Are Veterans: 7.74%<sup>1</sup>

### Five Largest Federal Employers

VA: 1,166



Air Force: 1,013



Agriculture: 259



Army: 224



Justice: 147



### Race and Ethnicity

White, non-Hispanic	2,112	61.5%
Black/African American, non-Hispanic	969	28.2%
Hispanic or Latino	159	4.6%
Asian, non-Hispanic	125	3.6%
Two or more races	45	1.3%
American Indian and Alaska Native	15	0.4%
Native Hawaiian and Other Pacific Islander	4	0.1%

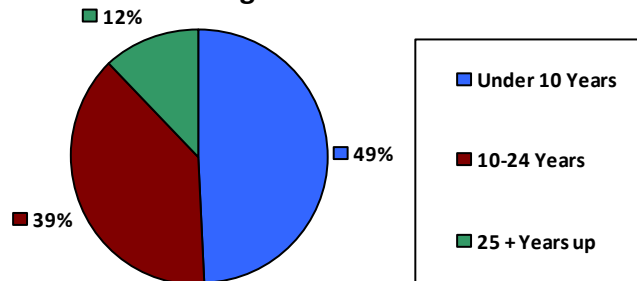
### Gender

M	1,833	53.4%
F	1,602	46.6%

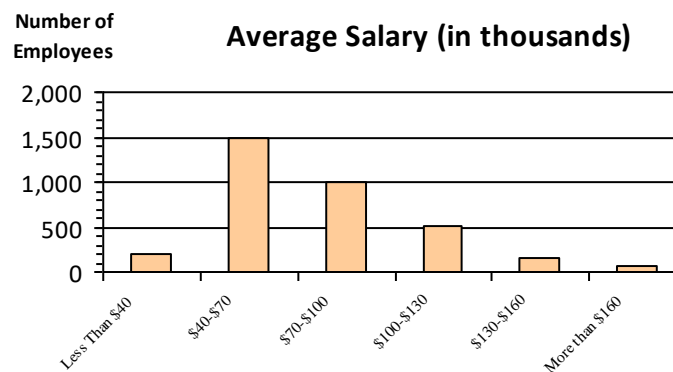
### Age

<35	503	14.6%
35-54	1,798	52.3%
55+	1,134	33.0%

### Length of Service



### Average Salary (in thousands)



### Educational Attainment

HS or Below	1,105	32.2%
Occupational Program	142	4.1%
Between HS and Bachelors	621	18.1%
Bachelors + Post Bachelors	997	29.0%
Masters and Post Grad	486	14.1%
Doctorate and Post Doc	81	2.4%

### Type of Employment<sup>2</sup>

Administrative	1,014	29.5%
Professional	837	24.4%
Technical	695	20.2%
Clerical	266	7.7%
Other White Collar	59	1.7%
Blue Collar	558	16.2%

All data unless otherwise noted is provided by the US Office of Personnel Management for the December 2015 reporting period. <sup>1</sup>Non-Federal Workers Data calculated from the US Bureau of Labor Statistics 2015 Annual Averages [https://www.bls.gov/news.release/archives/vet\\_03222016.pdf](https://www.bls.gov/news.release/archives/vet_03222016.pdf). <sup>2</sup>Employment categories consistent with the definitions given by the US Office of Personnel Management "Introduction to the Position Classification Standards" 2009. For a description of the employment categories, refer to <http://www.opm.gov/policy-data-oversight/classification-qualifications/classifying-general-schedule-positions/positionclassificationintro.pdf>.

## Who are the Civilian Federal Employees in

# Delaware - 2018

**Federal Workers in Delaware: 3,351**

Percentage Who Are Veterans: 36.61%

**Non-Federal Workers in Delaware: 464,000**<sup>1</sup>

Percentage Who Are Veterans: 7.33%<sup>1</sup>

### Five Largest Federal Employers

VA: 1,080



Air Force: 1,016



Agriculture: 278



Army: 244



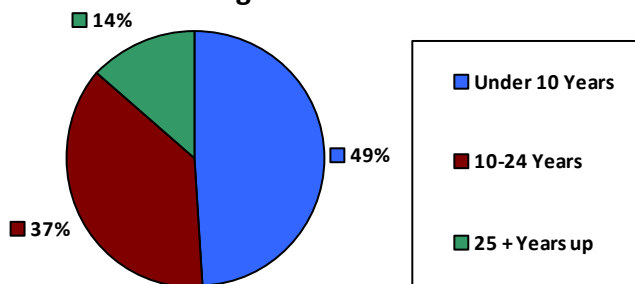
Justice: 139



### Race and Ethnicity

White, non-Hispanic	2,110	63.0%
Black/African American, non-Hispanic	927	27.7%
Hispanic or Latino	147	4.4%
Asian, non-Hispanic	107	3.2%
Two or more races	37	1.1%
American Indian and Alaska Native	15	0.4%
Native Hawaiian and Other Pacific Islander	7	0.2%

### Length of Service



### Educational Attainment

HS or Below	1,080	32.2%
Occupational Program	148	4.4%
Between HS and Bachelors	613	18.3%
Bachelors + Post Bachelors	953	28.4%
Masters and Post Grad	469	14.0%
Doctorate and Post Doc	81	2.4%

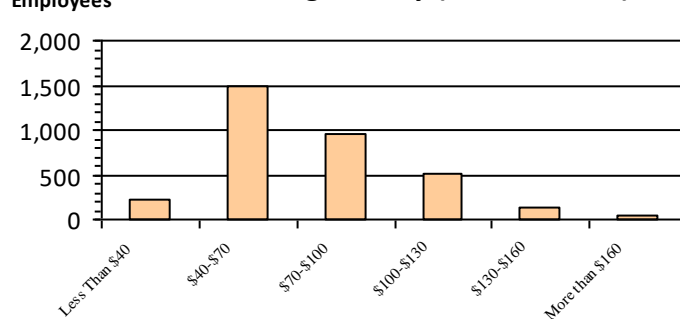
### Gender

M	1,809	54.0%
F	1,541	46.0%

### Age

<35	506	15.1%
35-54	1,761	52.5%
55+	1,084	32.3%

### Average Salary (in thousands)



### Type of Employment<sup>2</sup>

Administrative	965	28.8%
Professional	796	23.8%
Technical	702	20.9%
Clerical	251	7.5%
Other White Collar	49	1.5%
Blue Collar	582	17.4%

All data unless otherwise noted is provided by the US Office of Personnel Management for the December 2018 reporting period. <sup>1</sup>Non-Federal Workers Data calculated from the US Bureau of Labor Statistics 2018 Annual Averages [www.bls.gov/news.release/pdf/vet.pdf](http://www.bls.gov/news.release/pdf/vet.pdf). <sup>2</sup>Employment categories consistent with the definitions given by the US Office of Personnel Management "Introduction to the Position Classification Standards" 2009. For a description of the employment categories, refer to [www.opm.gov/policy-data-oversight/classification-qualifications/classifying-general-schedule-positions/positionclassificationintro.pdf](http://www.opm.gov/policy-data-oversight/classification-qualifications/classifying-general-schedule-positions/positionclassificationintro.pdf).

## Who are the Civilian Federal Employees in

# Delaware - 2017

**Federal Workers in Delaware: 3,408**

*Percentage Who Are Veterans: 37.23%*

**Non-Federal Workers in Delaware: 446,000<sup>1</sup>**

*Percentage Who Are Veterans: 8.25%<sup>2</sup>*

### Five Largest Federal Employers

VA: 1,110



Air Force: 1,054



Agriculture: 270



Army: 211



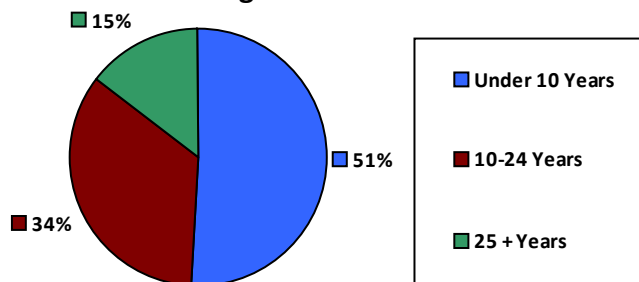
Justice: 140



### Race and Ethnicity

White, non-Hispanic	2,155	63.2%
Black/African American, non-Hispanic	932	27.3%
Hispanic or Latino	141	4.1%
Asian, non-Hispanic	119	3.5%
Two or more races	39	1.1%
American Indian and Alaska Native	16	0.5%
Native Hawaiian and Other Pacific Islander	6	0.2%

### Length of Service



### Educational Attainment

HS or Below	1,048	30.7%
Occupational Program	167	4.9%
Between HS and Bachelors	644	18.9%
Bachelors + Post Bachelors	980	28.8%
Masters and Post Grad	484	14.2%
Doctorate and Post Doc	79	2.3%

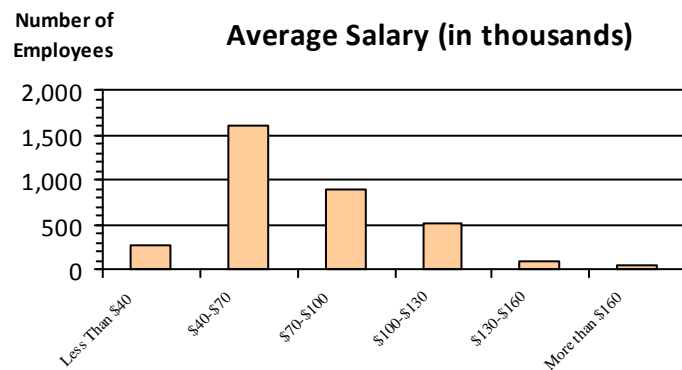
### Gender

M	1,837	53.9%
F	1,571	46.1%

### Age

<35	509	14.9%
35-54	1,808	53.0%
55+	1,091	32.0%

### Average Salary (in thousands)



### Type of Employment<sup>2</sup>

Administrative	972	28.5%
Professional	827	24.3%
Technical	714	20.9%
Clerical	258	7.6%
Other White Collar	55	1.6%
Blue Collar	582	17.1%

All data unless otherwise noted is provided by the US Office of Personnel Management for the December 2017 reporting period. Non-Federal Workers Data calculated from the US Bureau of Labor Statistics 2017 Annual Averages <https://www.bls.gov/news.release/vet.htm>.<sup>1</sup> Employment categories consistent with the definitions given by the US Office of Personnel Management "Introduction to the Position Classification Standards" (Revised: 2009), available at <https://www.opm.gov/policy-data-oversight/classification-qualifications/classifying-general-schedule-positions/positionclassificationintro.pdf>.<sup>2</sup>

## Who are the Civilian Federal Employees in

# Delaware - 2016

**Federal Workers in Delaware: 3,391**

*Percentage Who Are Veterans: 36.74%*

**Non-Federal Workers in Delaware: 450,000**<sup>1</sup>

*Percentage Who Are Veterans: 7.55%*<sup>1</sup>

### Five Largest Federal Employers

Air Force: 1,090



VA: 1,070



Agriculture: 266



Army: 218



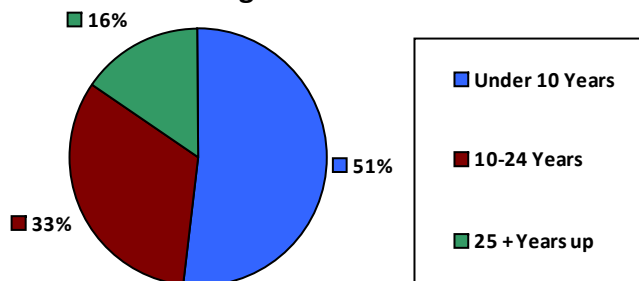
Justice: 148



### Race and Ethnicity

White, non-Hispanic	2,174	64.1%
Black/African American, non-Hispanic	910	26.8%
Hispanic or Latino	140	4.1%
Asian, non-Hispanic	113	3.3%
Two or more races	35	1.0%
American Indian and Alaska Native	14	0.4%
Native Hawaiian and Other Pacific Islander	5	0.1%

### Length of Service



### Educational Attainment

HS or Below	1,041	30.7%
Occupational Program	190	5.6%
Between HS and Bachelors	650	19.2%
Bachelors + Post Bachelors	973	28.7%
Masters and Post Grad	459	13.5%
Doctorate and Post Doc	74	2.2%

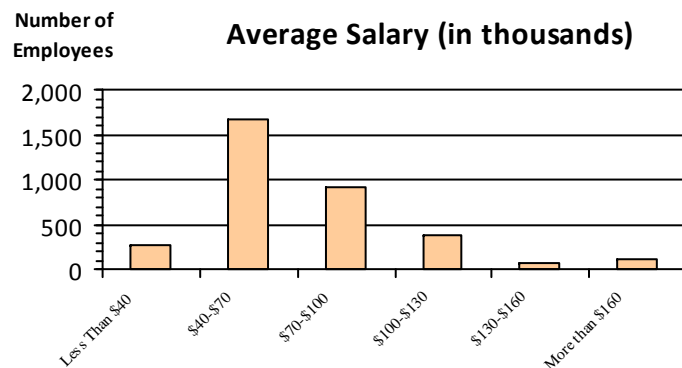
### Gender

M	1,859	54.8%
F	1,530	45.1%

### Age

<35	535	15.8%
35-54	1,787	52.7%
55+	1,069	31.5%

### Average Salary (in thousands)



### Type of Employment<sup>2</sup>

Administrative	961	28.3%
Professional	790	23.3%
Technical	724	21.3%
Clerical	251	7.4%
Other White Collar	55	1.6%
Blue Collar	610	18.0%

All data unless otherwise noted is provided by the US Office of Personnel Management for the December 2016 reporting period. <sup>1</sup>Non-Federal Workers Data calculated from the US Bureau of Labor Statistics 2015 Annual Averages [https://www.bls.gov/news.release/archives/vet\\_03222016.pdf](https://www.bls.gov/news.release/archives/vet_03222016.pdf). <sup>2</sup>Employment categories consistent with the definitions given by the US Office of Personnel Management "Introduction to the Position Classification Standards" 2009. For a description of the employment categories, refer to <http://www.opm.gov/policy-data-oversight/classification-qualifications/classifying-general-schedule-positions/positionclassificationintro.pdf>.

## Who are the Civilian Federal Employees in

# Delaware - 2015

**Federal Workers in Delaware: 3,250**

Percentage Who Are Veterans: 37.10%

**Non-Federal Workers in Delaware: 439,000**<sup>1</sup>

Percentage Who Are Veterans: 7.52%<sup>1</sup>

### Five Largest Federal Employers

Air Force: 1,034



VA: 977



Agriculture: 269



Army: 234



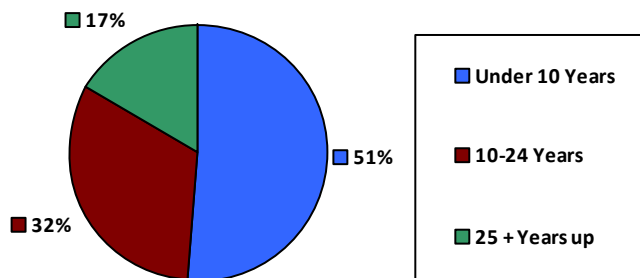
Justice: 141



### Race and Ethnicity

White, non-Hispanic	2,097	64.5%
Black/African American, non-Hispanic	871	26.8%
Hispanic or Latino	129	4.0%
Asian, non-Hispanic	104	3.2%
Two or more races	32	1.0%
American Indian and Alaska Native	14	0.4%
Native Hawaiian and Other Pacific Islander	3	0.1%

### Length of Service



### Educational Attainment

HS or Below	998	30.7%
Occupational Program	184	5.7%
Between HS and Bachelors	655	20.2%
Bachelors + Post Bachelors	929	28.6%
Masters and Post Grad	420	12.9%
Doctorate and Post Doc	64	2.0%

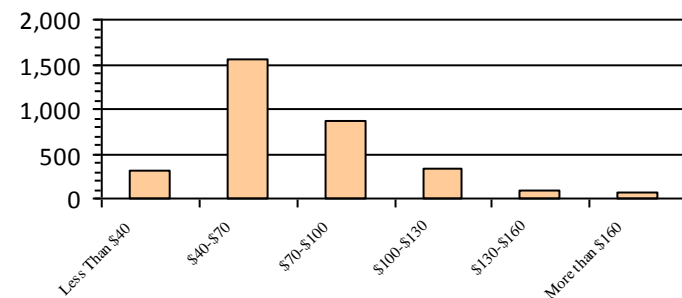
### Gender

M	1,758	54.1%
F	1,492	45.9%

### Age

<35	492	15.1%
35-54	1,754	54.0%
55+	1,004	30.9%

### Average Salary (in thousands)



### Type of Employment<sup>2</sup>

Administrative	926	28.5%
Professional	734	22.6%
Technical	723	22.2%
Clerical	246	7.6%
Other White Collar	47	1.4%
Blue Collar	574	17.7%

All data unless otherwise noted is provided by the US Office of Personnel Management for the December 2015 reporting period. <sup>1</sup>Non-Federal Workers Data calculated from the US Bureau of Labor Statistics 2015 Annual Averages [https://www.bls.gov/news.release/archives/vet\\_03222016.pdf](https://www.bls.gov/news.release/archives/vet_03222016.pdf). <sup>2</sup>Employment categories consistent with the definitions given by the US Office of Personnel Management "Introduction to the Position Classification Standards" 2009. For a description of the employment categories, refer to <http://www.opm.gov/policy-data-oversight/classification-qualifications/classifying-general-schedule-positions/positionclassificationintro.pdf>.



## Who are the Civilian Federal Employees in

# Delaware - 2014

**Federal Workers in Delaware: 3,368**

*Percentage Who Are Veterans: 36.55%*

**Non-Federal Workers in Delaware: 421,000**<sup>1</sup>

*Percentage Who Are Veterans: 7.13%*<sup>1</sup>

### Five Largest Federal Employers

Air Force: 1,108



VA: 1,010



Army: 299



Agriculture: 250



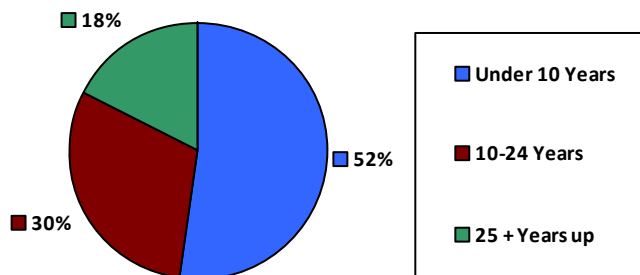
Justice: 124



### Race and Ethnicity

White, non-Hispanic	2,210	65.6%
Black/African American, non-Hispanic	865	25.7%
Hispanic or Latino	129	3.8%
Asian, non-Hispanic	116	3.4%
Two or more races	31	0.9%
American Indian and Alaska Native	15	0.4%
Native Hawaiian and Other Pacific Islander	2	0.1%

### Length of Service



### Educational Attainment

HS or Below	1,081	32.1%
Occupational Program	183	5.4%
Between HS and Bachelors	699	20.8%
Bachelors + Post Bachelors	929	27.6%
Masters and Post Grad	407	12.1%
Doctorate and Post Doc	69	2.0%

### Gender

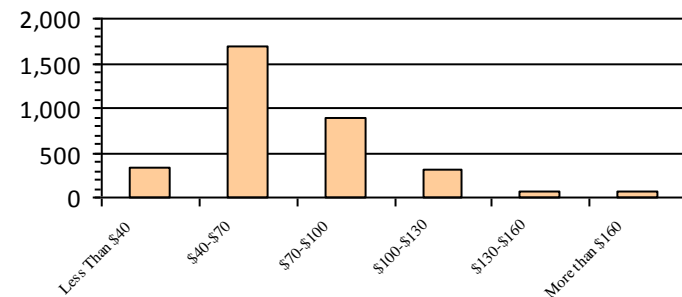
M	1,831	54.4%
F	1,537	45.6%

### Age

<35	555	16.5%
35-54	1,800	53.4%
55+	1,013	30.1%

Number of Employees

### Average Salary (in thousands)



### Type of Employment<sup>2</sup>

Administrative	941	27.9%
Professional	736	21.9%
Technical	748	22.2%
Clerical	260	7.7%
Other White Collar	59	1.8%
Blue Collar	624	18.5%

All data unless otherwise noted is provided by the US Office of Personnel Management for the December 2014 reporting period. <sup>1</sup>Non-Federal Workers Data calculated from the US Bureau of Labor Statistics 2014 Annual Averages [https://www.bls.gov/news.release/archives/vet\\_03182015.pdf](https://www.bls.gov/news.release/archives/vet_03182015.pdf). <sup>2</sup>Employment categories consistent with the definitions given by the US Office of Personnel Management "Introduction to the Position Classification Standards" 2009. For a description of the employment categories, refer to <http://www.opm.gov/policy-data-oversight/classification-qualifications/classifying-general-schedule-positions/positionclassificationintro.pdf>.



## Who are the Civilian Federal Employees in

# Delaware - 2013

**Federal Workers in Delaware: 3,263**

*Percentage Who Are Veterans: 36.25%*

**Non-Federal Workers in Delaware: 404,000**<sup>1</sup>

*Percentage Who Are Veterans: 9.16%*<sup>1</sup>

### Five Largest Federal Employers

Air Force: 1,079



VA: 983



Army: 274



Agriculture: 237



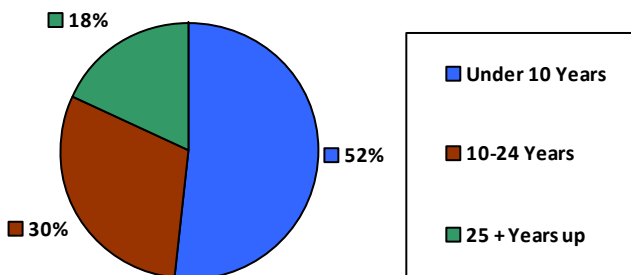
Justice: 125



### Race and Ethnicity

White, non-Hispanic	2,166	66.4%
Black/African American, non-Hispanic	824	25.3%
Hispanic or Latino	123	3.8%
Asian, non-Hispanic	104	3.2%
Two or more races	29	0.9%
American Indian and Alaska Native	15	0.5%
Native Hawaiian and Other Pacific Islander	2	0.1%

### Length of Service



### Educational Attainment

HS or Below	1,039	31.8%
Occupational Program	178	5.5%
Between HS and Bachelors	691	21.2%
Bachelors + Post Bachelors	893	27.4%
Masters and Post Grad	392	12.0%
Doctorate and Post Doc	70	2.1%

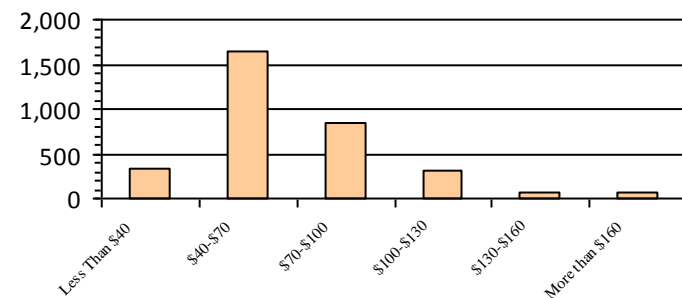
### Gender

M	1,773	54.3%
F	1,490	45.7%

### Age

<35	479	14.7%
35-54	1,824	55.9%
55+	960	29.4%

### Average Salary (in thousands)



### Type of Employment<sup>2</sup>

Administrative	922	28.3%
Professional	720	22.1%
Technical	727	22.3%
Clerical	255	7.8%
Other White Collar	61	1.9%
Blue Collar	578	17.7%

All data unless otherwise noted is provided by the US Office of Personnel Management for the December 2013 reporting period. <sup>1</sup>Non-Federal Workers Data calculated from the US Bureau of Labor Statistics 2013 Annual Averages [https://www.bls.gov/news.release/archives/vet\\_03202014.pdf](https://www.bls.gov/news.release/archives/vet_03202014.pdf). <sup>2</sup>Employment categories consistent with the definitions given by the US Office of Personnel Management "Introduction to the Position Classification Standards" 2009. For a description of the employment categories, refer to <http://www.opm.gov/policy-data-oversight/classification-qualifications/classifying-general-schedule-positions/positionclassificationintro.pdf>.