

Who are the Civilian Federal Employees in Connecticut - 2021

Federal Workers in Connecticut: 9,589
Percentage Who Are Veterans: 26.44%

Non-Federal Workers in Connecticut: 1,694,000¹
Percentage Who Are Veterans: 4.01%¹

Five Largest Federal Employers

VA: 3,753



Navy: 1,240



DHS: 892



Justice: 769



Defense: 571



Race and Ethnicity

White, non-Hispanic	6,706	69.9%
Black/African American, non-Hispanic	1,256	13.1%
Hispanic or Latino	865	9.0%
Asian, non-Hispanic	536	5.6%
Two or more races	135	1.4%
American Indian and Alaska Native	53	0.6%
Native Hawaiian and Other Pacific Islander	16	0.2%

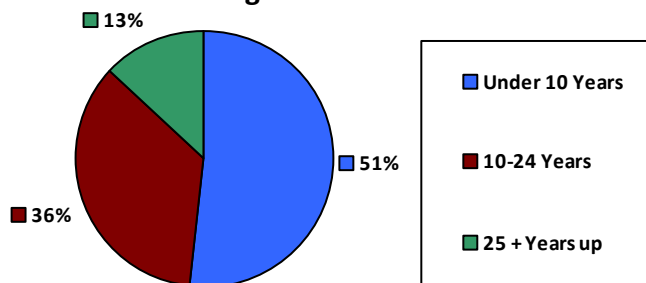
Gender

M	5,143	53.6%
F	4,446	46.4%

Age

<35	1,752	18.3%
35-54	4,989	52.0%
55+	2,848	29.7%

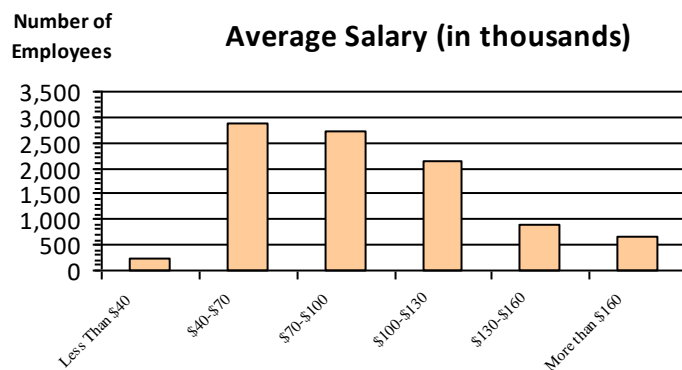
Length of Service



Educational Attainment

HS or Below	2,504	26.1%
Occupational Program	287	3.0%
Between HS and Bachelors	1,502	15.7%
Bachelors + Post Bachelors	3,279	34.2%
Masters and Post Grad	1,564	16.3%
Doctorate and Post Doc	435	4.5%

Average Salary (in thousands)



Type of Employment²

Administrative	3,271	34.1%
Professional	1,663	17.3%
Technical	516	5.4%
Clerical	280	2.9%
Other White Collar	871	9.1%
Blue Collar	925	9.6%

All data unless otherwise noted is provided by the US Office of Personnel Management for the December 2015 reporting period. ¹Non-Federal Workers Data calculated from the US Bureau of Labor Statistics 2015 Annual Averages https://www.bls.gov/news.release/archives/vet_03222016.pdf. ²Employment categories consistent with the definitions given by the US Office of Personnel Management "Introduction to the Position Classification Standards" 2009. For a description of the employment categories, refer to <http://www.opm.gov/policy-data-oversight/classification-qualifications/classifying-general-schedule-positions/positionclassificationintro.pdf>.

Who are the Civilian Federal Employees in Connecticut - 2020

Federal Workers in Connecticut: 9,632
Percentage Who Are Veterans: 26.85%

Non-Federal Workers in Connecticut: 1,697,000¹
Percentage Who Are Veterans: 4.01%¹

Five Largest Federal Employers

VA: 3,719



Navy: 1,243



DHS: 888



Justice: 791



Defense: 605



Race and Ethnicity

White, non-Hispanic	6,810	70.7%
Black/African American, non-Hispanic	1,225	12.7%
Hispanic or Latino	868	9.0%
Asian, non-Hispanic	503	5.2%
Two or more races	141	1.5%
American Indian and Alaska Native	56	0.6%
Native Hawaiian and Other Pacific Islander	14	0.1%

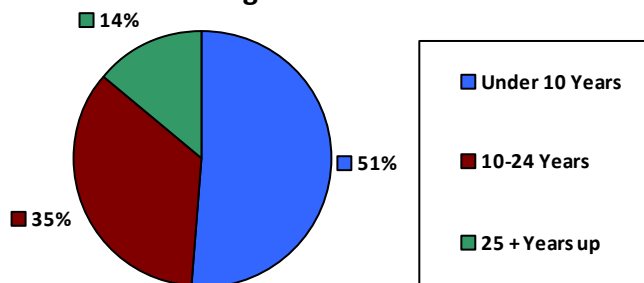
Gender

M	5,213	54.1%
F	4,419	45.9%

Age

<35	1,880	19.5%
35-54	4,913	51.0%
55+	2,839	29.5%

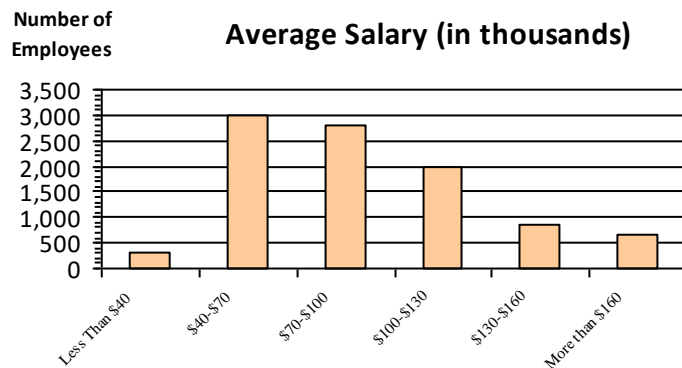
Length of Service



Educational Attainment

HS or Below	2,526	26.2%
Occupational Program	303	3.1%
Between HS and Bachelors	1,575	16.4%
Bachelors + Post Bachelors	3,263	33.9%
Masters and Post Grad	1,513	15.7%
Doctorate and Post Doc	434	4.5%

Average Salary (in thousands)



Type of Employment²

Administrative	2,965	30.8%
Professional	3,198	33.2%
Technical	1,702	17.7%
Clerical	538	5.6%
Other White Collar	300	3.1%
Blue Collar	925	9.6%

All data unless otherwise noted is provided by the US Office of Personnel Management for the December 2015 reporting period. ¹Non-Federal Workers Data calculated from the US Bureau of Labor Statistics 2015 Annual Averages https://www.bls.gov/news.release/archives/vet_03222016.pdf. ²Employment categories consistent with the definitions given by the US Office of Personnel Management "Introduction to the Position Classification Standards" 2009. For a description of the employment categories, refer to <http://www.opm.gov/policy-data-oversight/classification-qualifications/classifying-general-schedule-positions/positionclassificationintro.pdf>.

Who are the Civilian Federal Employees in Connecticut - 2019

Federal Workers in Connecticut: 9,530
Percentage Who Are Veterans: 27.03%

Non-Federal Workers in Connecticut: 1,819,000¹
Percentage Who Are Veterans: 4.34%¹

Five Largest Federal Employers

VA: 3,623



Navy: 1,200



DHS: 900



Justice: 771



Defense: 674



Race and Ethnicity

White, non-Hispanic	6,643	69.7%
Black/African American, non-Hispanic	1,198	12.6%
Hispanic or Latino	826	8.7%
Asian, non-Hispanic	485	5.1%
Two or more races	133	1.4%
American Indian and Alaska Native	55	0.6%
Native Hawaiian and Other Pacific Islander	10	0.1%

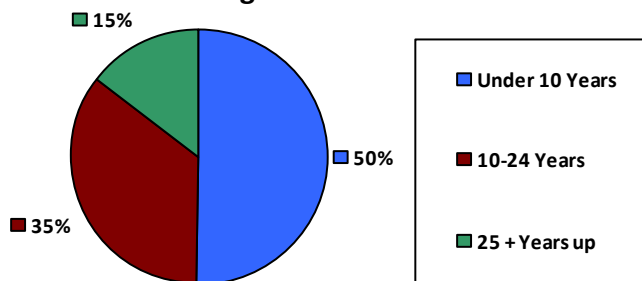
Gender

M	5,185	54.4%
F	4,345	45.6%

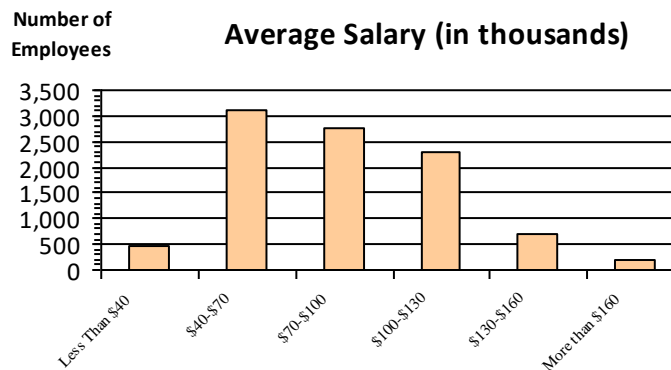
Age

<35	1,836	19.3%
35-54	4,848	50.9%
55+	2,846	29.9%

Length of Service



Average Salary (in thousands)



Educational Attainment

HS or Below	2,298	24.1%
Occupational Program	418	4.4%
Between HS and Bachelors	1,653	17.3%
Bachelors + Post Bachelors	3,172	33.3%
Masters and Post Grad	1,448	15.2%
Doctorate and Post Doc	527	5.5%

Type of Employment²

Administrative	2,931	30.8%
Professional	3,154	33.1%
Technical	1,651	17.3%
Clerical	562	5.9%
Other White Collar	304	3.2%
Blue Collar	925	9.7%

All data unless otherwise noted is provided by the US Office of Personnel Management for the December 2015 reporting period. ¹Non-Federal Workers Data calculated from the US Bureau of Labor Statistics 2015 Annual Averages https://www.bls.gov/news.release/archives/vet_03222016.pdf. ²Employment categories consistent with the definitions given by the US Office of Personnel Management "Introduction to the Position Classification Standards" 2009. For a description of the employment categories, refer to <http://www.opm.gov/policy-data-oversight/classification-qualifications/classifying-general-schedule-positions/positionclassificationintro.pdf>.

Who are the Civilian Federal Employees in Connecticut - 2018

Federal Workers in Connecticut: 9,322
Percentage Who Are Veterans: 27.14%

Non-Federal Workers in Connecticut: 1,805,000¹
Percentage Who Are Veterans: 4.43%¹

Five Largest Federal Employers

VA: 3,537



Navy: 1,150



DHS: 895



Justice: 753



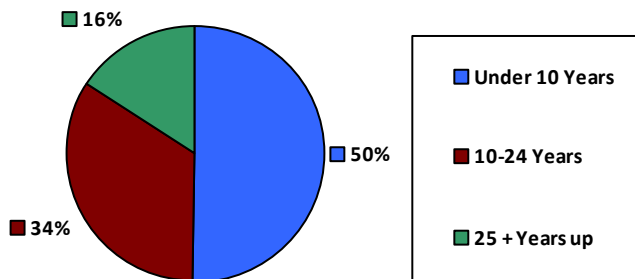
Defense: 635



Race and Ethnicity

White, non-Hispanic	6,566	70.4%
Black/African American, non-Hispanic	1,125	12.1%
Hispanic or Latino	792	8.5%
Asian, non-Hispanic	458	4.9%
Two or more races	117	1.3%
American Indian and Alaska Native	56	0.6%
Native Hawaiian and Other Pacific Islander	13	0.1%

Length of Service



Educational Attainment

HS or Below	2,189	23.5%
Occupational Program	426	4.6%
Between HS and Bachelors	1,695	18.2%
Bachelors + Post Bachelors	3,103	33.3%
Masters and Post Grad	1,412	15.1%
Doctorate and Post Doc	486	5.2%

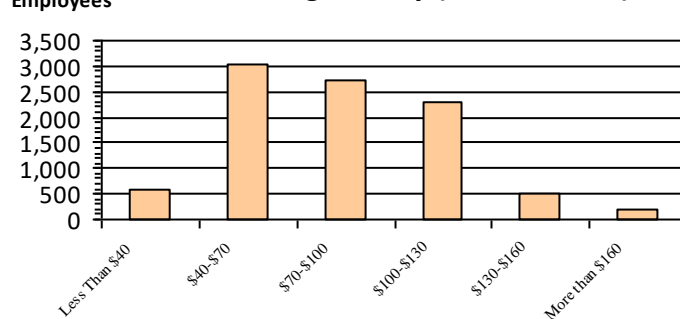
Gender

M	5,113	54.9%
F	4,204	45.1%

Age

<35	1,804	19.4%
35-54	4,789	51.4%
55+	2,729	29.3%

Average Salary (in thousands)



Type of Employment²

Administrative	2,819	30.2%
Professional	3,079	33.0%
Technical	1,671	17.9%
Clerical	572	6.1%
Other White Collar	265	2.8%
Blue Collar	913	9.8%

All data unless otherwise noted is provided by the US Office of Personnel Management for the December 2018 reporting period. ¹Non-Federal Workers Data calculated from the US Bureau of Labor Statistics 2018 Annual Averages www.bls.gov/news.release/pdf/vet.pdf. ²Employment categories consistent with the definitions given by the US Office of Personnel Management "Introduction to the Position Classification Standards" 2009. For a description of the employment categories, refer to www.opm.gov/policy-data-oversight/classification-qualifications/classifying-general-schedule-positions/positionclassificationintro.pdf.

Who are the Civilian Federal Employees in Connecticut - 2017

Federal Workers in Connecticut: 9,393

Percentage Who Are Veterans: 27.62%

Non-Federal Workers in Connecticut: 1,795,000¹

Percentage Who Are Veterans: 5.28%²

Five Largest Federal Employers

VA: 3,553



Navy: 1,131



DHS: 871



Justice: 758



Defense: 642



Race and Ethnicity

White, non-Hispanic	6,823	72.6%
Black/African American, non-Hispanic	1,162	12.4%
Hispanic or Latino	769	8.2%
Asian, non-Hispanic	462	4.9%
Two or more races	110	1.2%
American Indian and Alaska Native	55	0.6%
Native Hawaiian and Other Pacific Islander	12	0.1%

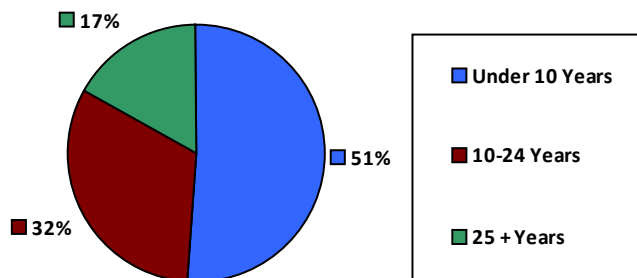
Gender

M	5,208	55.5%
F	4,182	44.5%

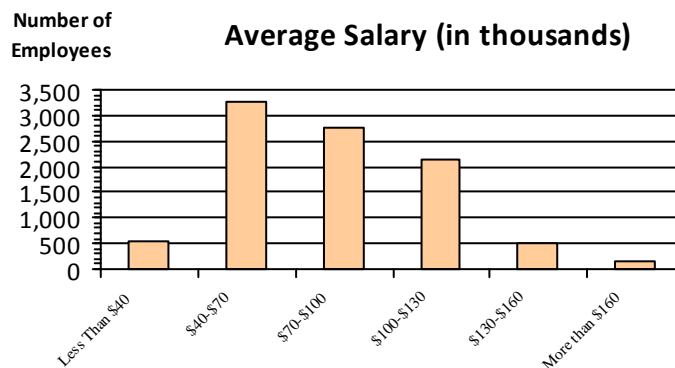
Age

<35	1,830	19.5%
35-54	4,823	51.3%
55+	2,740	29.2%

Length of Service



Average Salary (in thousands)



Educational Attainment

HS or Below	2,208	23.5%
Occupational Program	444	4.7%
Between HS and Bachelors	1,767	18.8%
Bachelors + Post Bachelors	3,125	33.3%
Masters and Post Grad	1,390	14.8%
Doctorate and Post Doc	456	4.9%

Type of Employment²

Administrative	2,821	30.0%
Professional	3,119	33.2%
Technical	1,715	18.3%
Clerical	511	5.4%
Other White Collar	266	2.8%
Blue Collar	960	10.2%

All data unless otherwise noted is provided by the US Office of Personnel Management for the December 2017 reporting period. Non-Federal Workers Data calculated from the US Bureau of Labor Statistics 2017 Annual Averages <https://www.bls.gov/news.release/vet.htm>.¹ Employment categories consistent with the definitions given by the US Office of Personnel Management "Introduction to the Position Classification Standards" (Revised: 2009), available at <https://www.opm.gov/policy-data-oversight/classification-qualifications/classifying-general-schedule-positions/positionclassificationintro.pdf>.²

Who are the Civilian Federal Employees in Connecticut - 2016

Federal Workers in Connecticut: 9,401
Percentage Who Are Veterans: 27.53%

Non-Federal Workers in Connecticut: 1,772,000¹
Percentage Who Are Veterans: 5.59%¹

Five Largest Federal Employers

VA: 3,507



Navy: 1,135



DHS: 850



Justice: 740



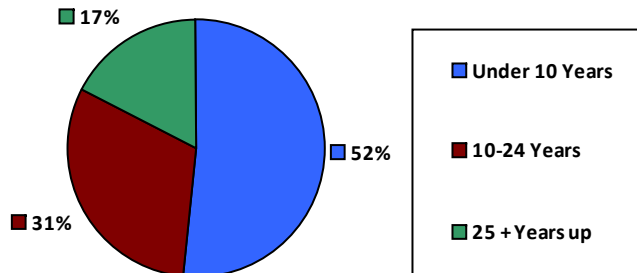
Defense: 661



Race and Ethnicity

White, non-Hispanic	6,939	73.8%
Black/African American, non-Hispanic	1,129	12.0%
Hispanic or Latino	729	7.8%
Asian, non-Hispanic	443	4.7%
Two or more races	93	1.0%
American Indian and Alaska Native	53	0.6%
Native Hawaiian and Other Pacific Islander	15	0.2%

Length of Service



Educational Attainment

HS or Below	2,226	23.7%
Occupational Program	451	4.8%
Between HS and Bachelors	1,792	19.1%
Bachelors + Post Bachelors	3,119	33.2%
Masters and Post Grad	1,394	14.8%
Doctorate and Post Doc	415	4.4%

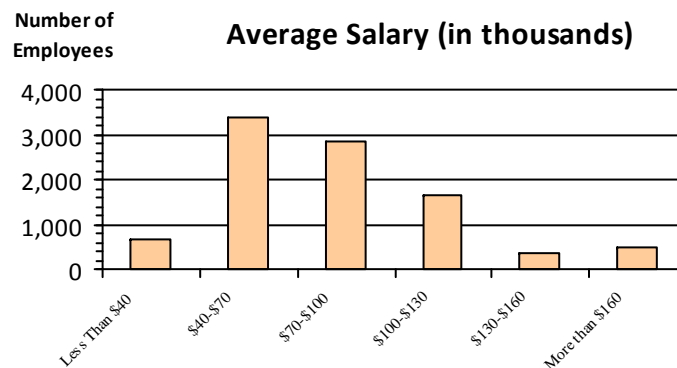
Gender

M	5,223	55.6%
F	4,176	44.4%

Age

<35	1,844	19.6%
35-54	4,858	51.7%
55+	2,699	28.7%

Average Salary (in thousands)



Type of Employment²

Administrative	2,778	29.5%
Professional	3,107	33.0%
Technical	1,756	18.7%
Clerical	530	5.6%
Other White Collar	260	2.8%
Blue Collar	970	10.3%

All data unless otherwise noted is provided by the US Office of Personnel Management for the December 2016 reporting period. ¹Non-Federal Workers Data calculated from the US Bureau of Labor Statistics 2015 Annual Averages https://www.bls.gov/news.release/archives/vet_03222016.pdf. ²Employment categories consistent with the definitions given by the US Office of Personnel Management "Introduction to the Position Classification Standards" 2009. For a description of the employment categories, refer to <http://www.opm.gov/policy-data-oversight/classification-qualifications/classifying-general-schedule-positions/positionclassificationintro.pdf>.

Who are the Civilian Federal Employees in Connecticut - 2015

Federal Workers in Connecticut: 9,309
Percentage Who Are Veterans: 27.69%

Non-Federal Workers in Connecticut: 1,763,000¹
Percentage Who Are Veterans: 5.22%¹

Five Largest Federal Employers

VA: 3,453



Navy: 1,127



DHS: 840



Justice: 705



Defense: 647



Race and Ethnicity

White, non-Hispanic	6,900	74.1%
Black/African American, non-Hispanic	1,088	11.7%
Hispanic or Latino	718	7.7%
Asian, non-Hispanic	440	4.7%
Two or more races	88	0.9%
American Indian and Alaska Native	55	0.6%
Native Hawaiian and Other Pacific Islander	18	0.2%

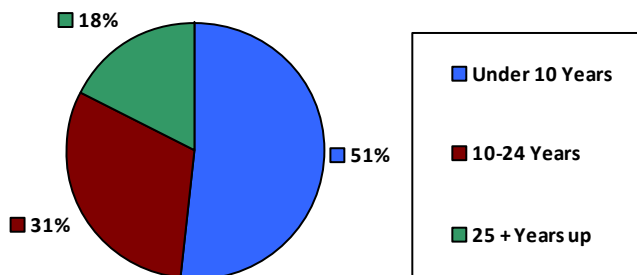
Gender

M	5,172	55.6%
F	4,136	44.4%

Age

<35	1,763	18.9%
35-54	4,889	52.5%
55+	2,657	28.5%

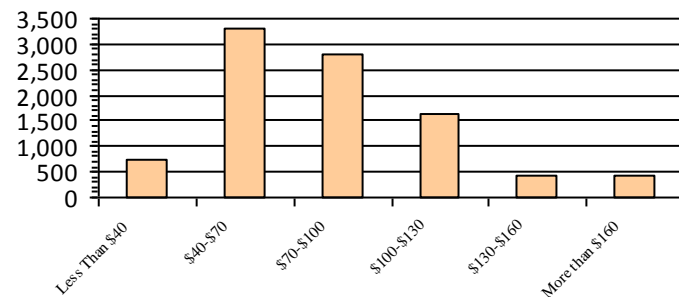
Length of Service



Educational Attainment

HS or Below	2,140	23.0%
Occupational Program	483	5.2%
Between HS and Bachelors	1,789	19.2%
Bachelors + Post Bachelors	3,116	33.5%
Masters and Post Grad	1,378	14.8%
Doctorate and Post Doc	401	4.3%

Average Salary (in thousands)



Type of Employment²

Administrative	2,759	29.6%
Professional	3,073	33.0%
Technical	1,823	19.6%
Clerical	463	5.0%
Other White Collar	234	2.5%
Blue Collar	957	10.3%

All data unless otherwise noted is provided by the US Office of Personnel Management for the December 2015 reporting period. ¹Non-Federal Workers Data calculated from the US Bureau of Labor Statistics 2015 Annual Averages https://www.bls.gov/news.release/archives/vet_03222016.pdf. ²Employment categories consistent with the definitions given by the US Office of Personnel Management "Introduction to the Position Classification Standards" 2009. For a description of the employment categories, refer to <http://www.opm.gov/policy-data-oversight/classification-qualifications/classifying-general-schedule-positions/positionclassificationintro.pdf>.

Who are the Civilian Federal Employees in Connecticut - 2014

Federal Workers in Connecticut: 9,321
Percentage Who Are Veterans: 27.31%

Non-Federal Workers in Connecticut: 1,751,000¹
Percentage Who Are Veterans: 5.03%¹

Five Largest Federal Employers

VA: 3,364



Navy: 1,087



DHS: 849



Justice: 728



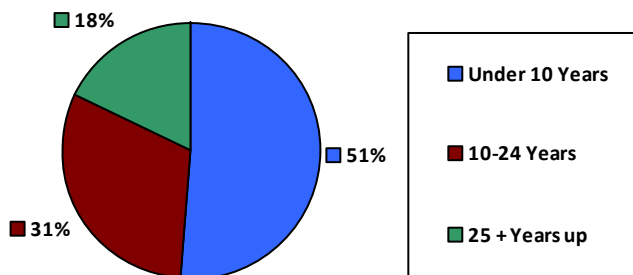
Defense: 648



Race and Ethnicity

White, non-Hispanic	6,959	74.7%
Black/African American, non-Hispanic	1,079	11.6%
Hispanic or Latino	709	7.6%
Asian, non-Hispanic	417	4.5%
Two or more races	82	0.9%
American Indian and Alaska Native	61	0.7%
Native Hawaiian and Other Pacific Islander	13	0.1%

Length of Service



Educational Attainment

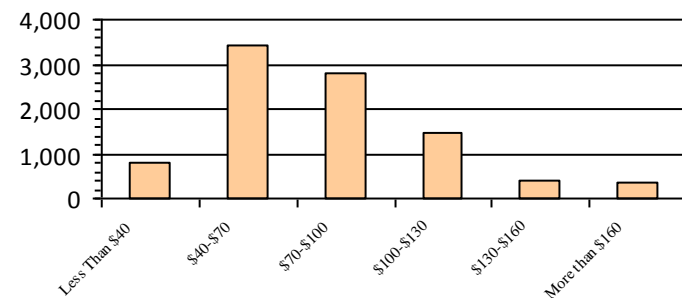
HS or Below	2,171	23.3%
Occupational Program	507	5.4%
Between HS and Bachelors	1,825	19.6%
Bachelors + Post Bachelors	3,184	34.2%
Masters and Post Grad	1,300	13.9%
Doctorate and Post Doc	329	3.5%

Gender

Age

Gender	Count	Percentage	Age Group	Count	Percentage
M	5,197	55.8%	<35	1,773	19.0%
			35-54	4,910	52.7%
F	4,124	44.2%	55+	2,638	28.3%

Average Salary (in thousands)



Type of Employment²

Administrative	2,795	30.0%
Professional	2,988	32.1%
Technical	1,809	19.4%
Clerical	496	5.3%
Other White Collar	261	2.8%
Blue Collar	972	10.4%

All data unless otherwise noted is provided by the US Office of Personnel Management for the December 2014 reporting period. ¹Non-Federal Workers Data calculated from the US Bureau of Labor Statistics 2014 Annual Averages https://www.bls.gov/news.release/archives/vet_03182015.pdf. ²Employment categories consistent with the definitions given by the US Office of Personnel Management "Introduction to the Position Classification Standards" 2009. For a description of the employment categories, refer to <http://www.opm.gov/policy-data-oversight/classification-qualifications/classifying-general-schedule-positions/positionclassificationintro.pdf>.

Who are the Civilian Federal Employees in Connecticut - 2013

Federal Workers in Connecticut: 9,197
Percentage Who Are Veterans: 26.36%

Non-Federal Workers in Connecticut: 1,693,000¹
Percentage Who Are Veterans: 5.97%¹

Five Largest Federal Employers

VA: 3,191



Navy: 1,083



DHS: 910



Justice: 699



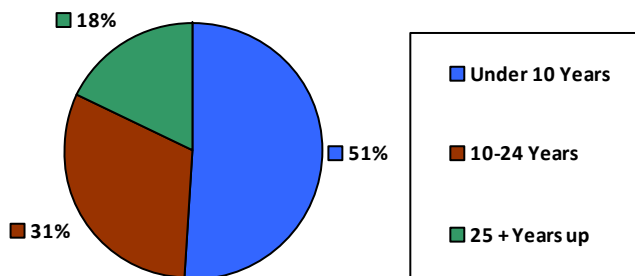
Defense: 639



Race and Ethnicity

White, non-Hispanic	6,982	75.9%
Black/African American, non-Hispanic	1,015	11.0%
Hispanic or Latino	659	7.2%
Asian, non-Hispanic	392	4.3%
Two or more races	85	0.9%
American Indian and Alaska Native	54	0.6%
Native Hawaiian and Other Pacific Islander	9	0.1%

Length of Service



Educational Attainment

HS or Below	2,157	23.5%
Occupational Program	500	5.4%
Between HS and Bachelors	1,814	19.7%
Bachelors + Post Bachelors	3,153	34.3%
Masters and Post Grad	1,268	13.8%
Doctorate and Post Doc	300	3.3%

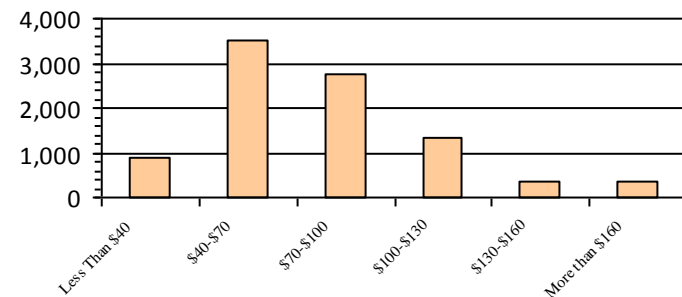
Gender

M	5,099	55.4%
F	4,098	44.6%

Age

<35	1,719	18.7%
35-54	4,847	52.7%
55+	2,631	28.6%

Average Salary (in thousands)



Type of Employment²

Administrative	2,783	30.3%
Professional	2,905	31.6%
Technical	1,774	19.3%
Clerical	567	6.2%
Other White Collar	259	2.8%
Blue Collar	908	9.9%

All data unless otherwise noted is provided by the US Office of Personnel Management for the December 2013 reporting period. ¹Non-Federal Workers Data calculated from the US Bureau of Labor Statistics 2013 Annual Averages https://www.bls.gov/news.release/archives/vet_03202014.pdf. ²Employment categories consistent with the definitions given by the US Office of Personnel Management "Introduction to the Position Classification Standards" 2009. For a description of the employment categories, refer to <http://www.opm.gov/policy-data-oversight/classification-qualifications/classifying-general-schedule-positions/positionclassificationintro.pdf>.