

Who are the Civilian Federal Employees in

Colorado - 2021

Federal Workers in Colorado: 41,929

Percentage Who Are Veterans: 34.51%

Non-Federal Workers in Colorado: 2,961,000¹

Percentage Who Are Veterans: 6.89%¹

Five Largest Federal Employers

VA: 7,287



DOI: 6,251



Air Force: 5,797



Army: 4,253



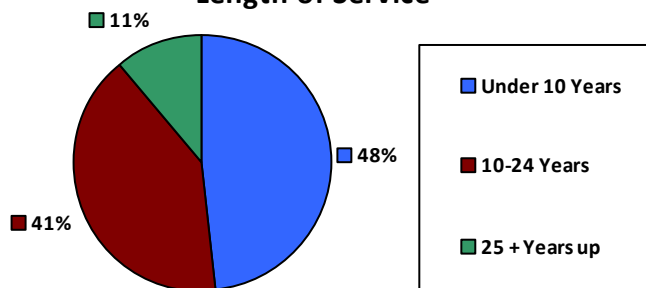
Agriculture: 3,243



Race and Ethnicity

White, non-Hispanic	31,037	74.0%
Black/African American, non-Hispanic	3,046	7.3%
Hispanic or Latino	4,499	10.7%
Asian, non-Hispanic	1,441	3.4%
Two or more races	974	2.3%
American Indian and Alaska Native	513	1.2%
Native Hawaiian and Other Pacific Islander	178	0.4%

Length of Service



Educational Attainment

HS or Below	10,623	25.3%
Occupational Program	532	1.3%
Between HS and Bachelors	6,276	15.0%
Bachelors + Post Bachelors	14,032	33.5%
Masters and Post Grad	8,201	19.5%
Doctorate and Post Doc	2,183	5.2%

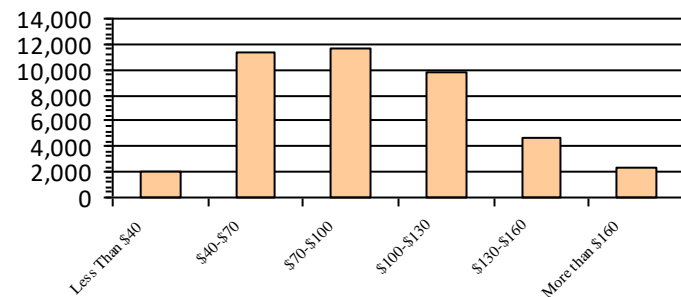
Gender

M	23,644	56.4%
F	18,285	43.6%

Age

<35	6,607	15.8%
35-54	22,978	54.8%
55+	12,344	29.4%

Average Salary (in thousands)



Type of Employment²

Administrative	12,958	30.9%
Professional	6,380	15.2%
Technical	2,128	5.1%
Clerical	1,625	3.9%
Other White Collar	1,958	4.7%
Blue Collar	2,138	5.1%

All data unless otherwise noted is provided by the US Office of Personnel Management for the December 2015 reporting period. ¹Non-Federal Workers Data calculated from the US Bureau of Labor Statistics 2015 Annual Averages https://www.bls.gov/news.release/archives/vet_03222016.pdf. ²Employment categories consistent with the definitions given by the US Office of Personnel Management "Introduction to the Position Classification Standards" 2009. For a description of the employment categories, refer to <http://www.opm.gov/policy-data-oversight/classification-qualifications/classifying-general-schedule-positions/positionclassificationintro.pdf>.

Who are the Civilian Federal Employees in

Colorado - 2020

Federal Workers in Colorado: 42,209

Percentage Who Are Veterans: 35.07%

Non-Federal Workers in Colorado: 2,870,000¹

Percentage Who Are Veterans: 6.45%¹

Five Largest Federal Employers

VA: 7,315



DOI: 6,194



Air Force: 5,954



Army: 4,441



Agriculture: 3,227



Race and Ethnicity

White, non-Hispanic	31,436	74.5%
Black/African American, non-Hispanic	3,142	7.4%
Hispanic or Latino	4,481	10.6%
Asian, non-Hispanic	1,419	3.4%
Two or more races	875	2.1%
American Indian and Alaska Native	513	1.2%
Native Hawaiian and Other Pacific Islander	184	0.4%

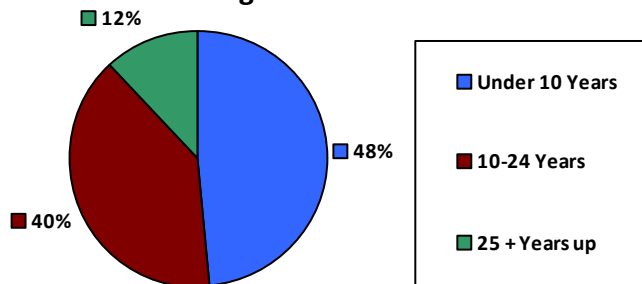
Gender

M	23,987	56.8%
F	18,222	43.2%

Age

<35	6,787	16.1%
35-54	22,843	54.1%
55+	12,579	29.8%

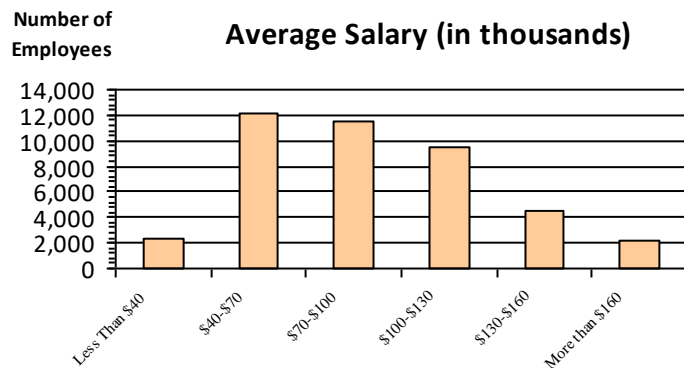
Length of Service



Educational Attainment

HS or Below	10,743	25.4%
Occupational Program	544	1.3%
Between HS and Bachelors	6,481	15.4%
Bachelors + Post Bachelors	14,081	33.4%
Masters and Post Grad	8,158	19.3%
Doctorate and Post Doc	2,111	5.0%

Average Salary (in thousands)



Type of Employment²

Administrative	16,779	39.7%
Professional	12,790	30.3%
Technical	6,634	15.7%
Clerical	2,228	5.3%
Other White Collar	1,615	3.8%
Blue Collar	2,138	5.1%

All data unless otherwise noted is provided by the US Office of Personnel Management for the December 2015 reporting period. ¹Non-Federal Workers Data calculated from the US Bureau of Labor Statistics 2015 Annual Averages https://www.bls.gov/news.release/archives/vet_03222016.pdf. ²Employment categories consistent with the definitions given by the US Office of Personnel Management "Introduction to the Position Classification Standards" 2009. For a description of the employment categories, refer to <http://www.opm.gov/policy-data-oversight/classification-qualifications/classifying-general-schedule-positions/positionclassificationintro.pdf>.

Who are the Civilian Federal Employees in

Colorado - 2019

Federal Workers in Colorado: 41,250

Percentage Who Are Veterans: 35.41%

Non-Federal Workers in Colorado: 3,030,000¹

Percentage Who Are Veterans: 5.41%¹

Five Largest Federal Employers

VA: 7,102



DOI: 6,008



Air Force: 5,667



Army: 4,368



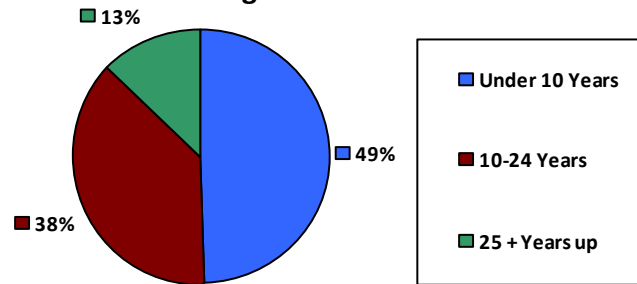
Agriculture: 3,032



Race and Ethnicity

White, non-Hispanic	30,848	74.8%
Black/African American, non-Hispanic	3,119	7.6%
Hispanic or Latino	4,352	10.5%
Asian, non-Hispanic	1,320	3.2%
Two or more races	835	2.0%
American Indian and Alaska Native	507	1.2%
Native Hawaiian and Other Pacific Islander	180	0.4%

Length of Service



Educational Attainment

HS or Below	10,197	24.7%
Occupational Program	747	1.8%
Between HS and Bachelors	6,753	16.4%
Bachelors + Post Bachelors	13,690	33.2%
Masters and Post Grad	7,638	18.5%
Doctorate and Post Doc	2,128	5.2%

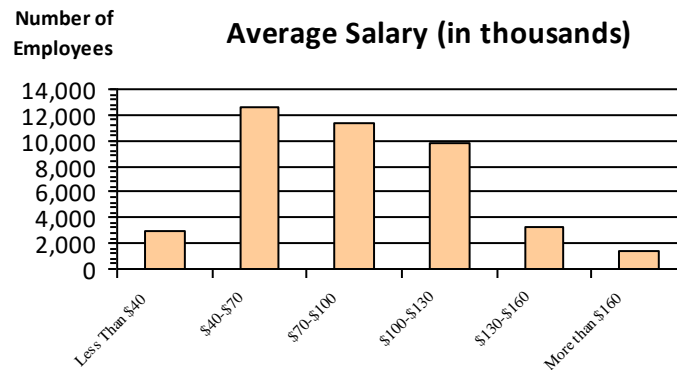
Gender

M	23,581	57.2%
F	17,665	42.8%

Age

<35	6,559	15.9%
35-54	22,345	54.2%
55+	12,346	29.9%

Average Salary (in thousands)



Type of Employment²

Administrative	16,023	38.8%
Professional	12,346	29.9%
Technical	6,549	15.9%
Clerical	2,550	6.2%
Other White Collar	1,621	3.9%
Blue Collar	2,143	5.2%

All data unless otherwise noted is provided by the US Office of Personnel Management for the December 2015 reporting period. ¹Non-Federal Workers Data calculated from the US Bureau of Labor Statistics 2015 Annual Averages https://www.bls.gov/news.release/archives/vet_03222016.pdf. ²Employment categories consistent with the definitions given by the US Office of Personnel Management "Introduction to the Position Classification Standards" 2009. For a description of the employment categories, refer to <http://www.opm.gov/policy-data-oversight/classification-qualifications/classifying-general-schedule-positions/positionclassificationintro.pdf>.

Who are the Civilian Federal Employees in

Colorado - 2018

Federal Workers in Colorado: 40,628

Percentage Who Are Veterans: 35.83%

Non-Federal Workers in Colorado: 2,962,000¹

Percentage Who Are Veterans: 6.08%¹

Five Largest Federal Employers

VA: 6,834



DOI: 6,001



Air Force: 5,454



Army: 4,437



Agriculture: 3,018



Race and Ethnicity

White, non-Hispanic	30,624	75.4%
Black/African American, non-Hispanic	3,047	7.5%
Hispanic or Latino	4,190	10.3%
Asian, non-Hispanic	1,262	3.1%
Two or more races	777	1.9%
American Indian and Alaska Native	508	1.3%
Native Hawaiian and Other Pacific Islander	151	0.4%

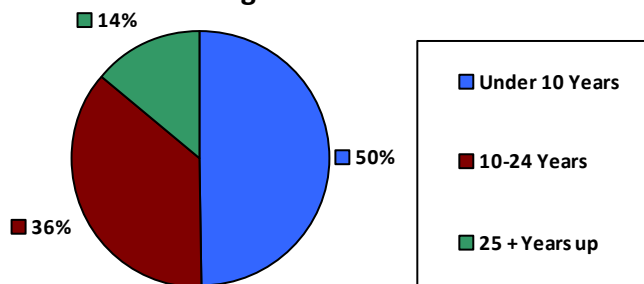
Gender

M	23,319	57.4%
F	17,278	42.6%

Age

<35	6,376	15.7%
35-54	22,095	54.4%
55+	12,157	29.9%

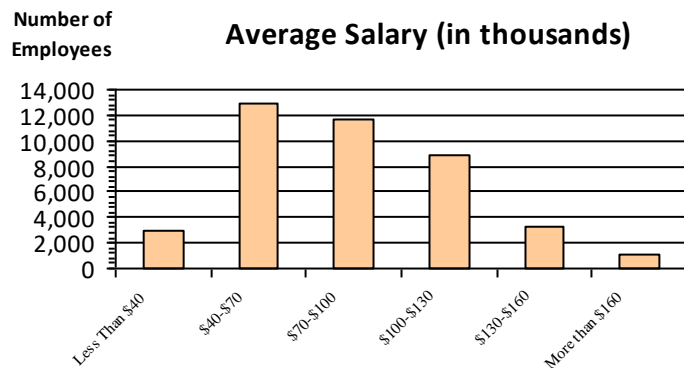
Length of Service



Educational Attainment

HS or Below	9,508	23.4%
Occupational Program	785	1.9%
Between HS and Bachelors	6,957	17.1%
Bachelors + Post Bachelors	13,677	33.7%
Masters and Post Grad	7,629	18.8%
Doctorate and Post Doc	1,957	4.8%

Average Salary (in thousands)



Type of Employment²

Administrative	15,658	38.5%
Professional	12,130	29.9%
Technical	6,694	16.5%
Clerical	2,360	5.8%
Other White Collar	1,619	4.0%
Blue Collar	2,142	5.3%

All data unless otherwise noted is provided by the US Office of Personnel Management for the December 2018 reporting period. ¹Non-Federal Workers Data calculated from the US Bureau of Labor Statistics 2018 Annual Averages www.bls.gov/news.release/pdf/vet.pdf. ²Employment categories consistent with the definitions given by the US Office of Personnel Management "Introduction to the Position Classification Standards" 2009. For a description of the employment categories, refer to www.opm.gov/policy-data-oversight/classification-qualifications/classifying-general-schedule-positions/positionclassificationintro.pdf.

Who are the Civilian Federal Employees in

Colorado - 2017

Federal Workers in Colorado: 40,612

Percentage Who Are Veterans: 35.85%

Non-Federal Workers in Colorado: 2,899,000¹

Percentage Who Are Veterans: 7.69%²

Five Largest Federal Employers

VA: 6,346



DOI: 6,147



Air Force: 5,521



Army: 4,377



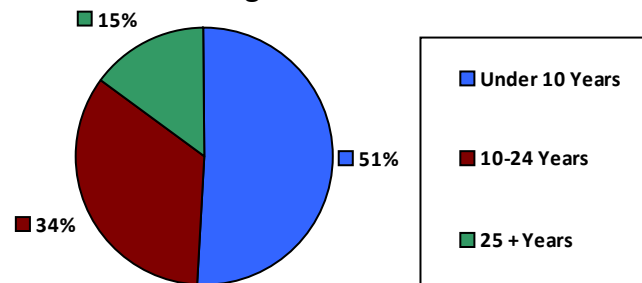
Agriculture: 3,172



Race and Ethnicity

White, non-Hispanic	30,917	76.1%
Black/African American, non-Hispanic	2,981	7.3%
Hispanic or Latino	4,049	10.0%
Asian, non-Hispanic	1,243	3.1%
Two or more races	719	1.8%
American Indian and Alaska Native	526	1.3%
Native Hawaiian and Other Pacific Islander	138	0.3%

Length of Service



Educational Attainment

HS or Below	9,368	23.1%
Occupational Program	799	2.0%
Between HS and Bachelors	7,158	17.6%
Bachelors + Post Bachelors	13,731	33.8%
Masters and Post Grad	7,534	18.5%
Doctorate and Post Doc	1,885	4.6%

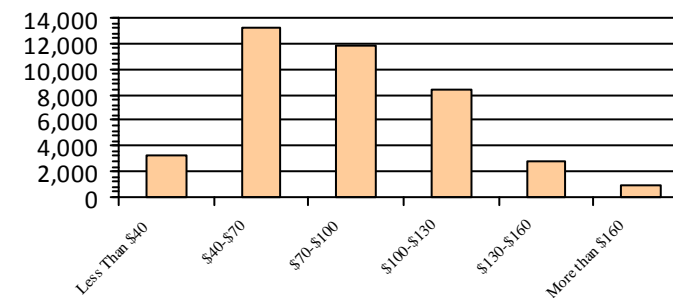
Gender

M	23,344	57.5%
F	17,258	42.5%

Age

<35	6,477	15.9%
35-54	21,941	54.0%
55+	12,194	30.0%

Average Salary (in thousands)



Type of Employment²

Administrative	15,685	38.6%
Professional	11,995	29.5%
Technical	6,645	16.4%
Clerical	2,370	5.8%
Other White Collar	1,675	4.1%
Blue Collar	2,237	5.5%

All data unless otherwise noted is provided by the US Office of Personnel Management for the December 2017 reporting period. Non-Federal Workers Data calculated from the US Bureau of Labor Statistics 2017 Annual Averages <https://www.bls.gov/news.release/vet.htm>.¹ Employment categories consistent with the definitions given by the US Office of Personnel Management "Introduction to the Position Classification Standards" (Revised: 2009), available at <https://www.opm.gov/policy-data-oversight/classification-qualifications/classifying-general-schedule-positions/positionclassificationintro.pdf>.²

Who are the Civilian Federal Employees in

Colorado - 2016

Federal Workers in Colorado: 41,352

Percentage Who Are Veterans: 35.79%

Non-Federal Workers in Colorado: 2,781,000¹

*Percentage Who Are Veterans: 6.80%*¹

Five Largest Federal Employers

DOI: 6,395



VA: 6,197



Air Force: 5,757



Army: 4,349



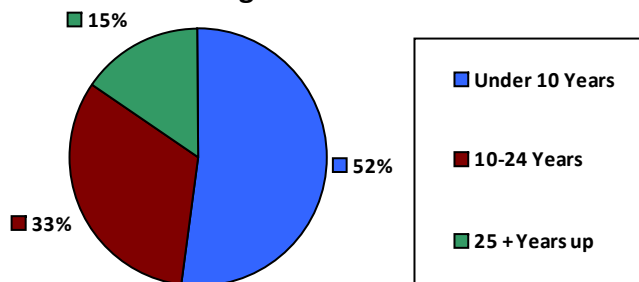
Agriculture: 3,265



Race and Ethnicity

White, non-Hispanic	31,705	76.7%
Black/African American, non-Hispanic	2,985	7.2%
Hispanic or Latino	4,070	9.8%
Asian, non-Hispanic	1,230	3.0%
Two or more races	644	1.6%
American Indian and Alaska Native	534	1.3%
Native Hawaiian and Other Pacific Islander	151	0.4%

Length of Service



Educational Attainment

HS or Below	9,690	23.4%
Occupational Program	827	2.0%
Between HS and Bachelors	7,409	17.9%
Bachelors + Post Bachelors	14,027	33.9%
Masters and Post Grad	7,434	18.0%
Doctorate and Post Doc	1,851	4.5%

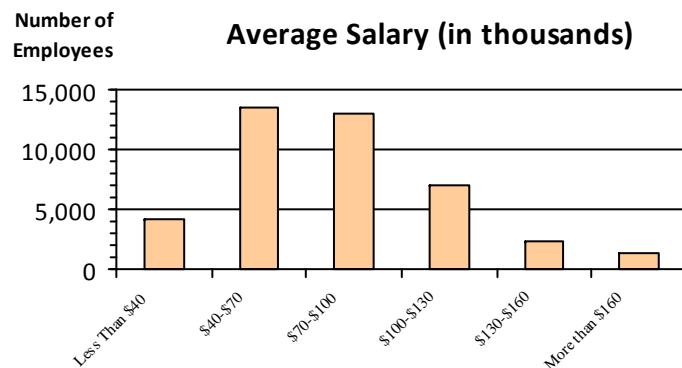
Gender

M	23,842	57.7%
F	17,507	42.3%

Age

<35	6,882	16.6%
35-54	22,306	53.9%
55+	12,164	29.4%

Average Salary (in thousands)



Type of Employment²

Administrative	15,804	38.2%
Professional	12,092	29.2%
Technical	6,867	16.6%
Clerical	2,541	6.1%
Other White Collar	1,733	4.2%
Blue Collar	2,311	5.6%

All data unless otherwise noted is provided by the US Office of Personnel Management for the December 2016 reporting period. ¹Non-Federal Workers Data calculated from the US Bureau of Labor Statistics 2015 Annual Averages https://www.bls.gov/news.release/archives/vet_03222016.pdf. ²Employment categories consistent with the definitions given by the US Office of Personnel Management "Introduction to the Position Classification Standards" 2009. For a description of the employment categories, refer to <http://www.opm.gov/policy-data-oversight/classification-qualifications/classifying-general-schedule-positions/positionclassificationintro.pdf>.

Who are the Civilian Federal Employees in

Colorado - 2015

Federal Workers in Colorado: 40,763

Percentage Who Are Veterans: 35.69%

Non-Federal Workers in Colorado: 2,668,000¹

*Percentage Who Are Veterans: 8.13%*¹

Five Largest Federal Employers

DOI: 6,342



VA: 5,904



Air Force: 5,714



Army: 4,328



Agriculture: 3,241



Race and Ethnicity

White, non-Hispanic	31,511	77.3%
Black/African American, non-Hispanic	2,893	7.1%
Hispanic or Latino	3,958	9.7%
Asian, non-Hispanic	1,167	2.9%
Two or more races	584	1.4%
American Indian and Alaska Native	532	1.3%
Native Hawaiian and Other Pacific Islander	116	0.3%

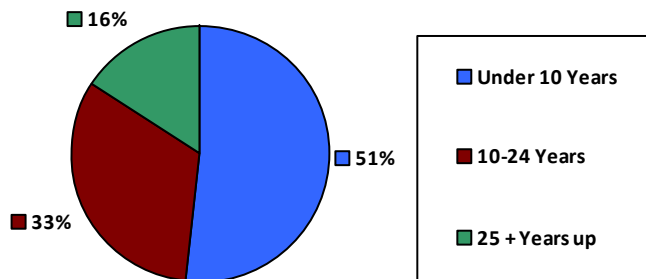
Gender

M	23,448	57.5%
F	17,314	42.5%

Age

<35	6,739	16.5%
35-54	22,036	54.1%
55+	11,988	29.4%

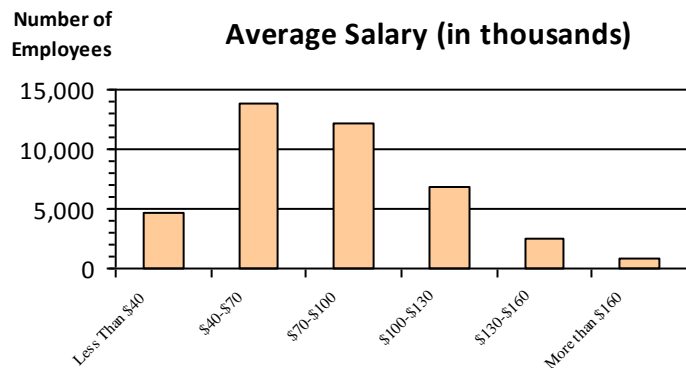
Length of Service



Educational Attainment

HS or Below	9,613	23.6%
Occupational Program	851	2.1%
Between HS and Bachelors	7,461	18.3%
Bachelors + Post Bachelors	13,862	34.0%
Masters and Post Grad	7,178	17.6%
Doctorate and Post Doc	1,744	4.3%

Average Salary (in thousands)



Type of Employment²

Administrative	15,543	38.1%
Professional	11,744	28.8%
Technical	6,953	17.1%
Clerical	2,532	6.2%
Other White Collar	1,730	4.2%
Blue Collar	2,256	5.5%

All data unless otherwise noted is provided by the US Office of Personnel Management for the December 2015 reporting period. ¹Non-Federal Workers Data calculated from the US Bureau of Labor Statistics 2015 Annual Averages https://www.bls.gov/news.release/archives/vet_03222016.pdf. ²Employment categories consistent with the definitions given by the US Office of Personnel Management "Introduction to the Position Classification Standards" 2009. For a description of the employment categories, refer to <http://www.opm.gov/policy-data-oversight/classification-qualifications/classifying-general-schedule-positions/positionclassificationintro.pdf>.

Who are the Civilian Federal Employees in

Colorado - 2014

Federal Workers in Colorado: 40,047

Percentage Who Are Veterans: 35.42%

Non-Federal Workers in Colorado: 2,649,000¹

*Percentage Who Are Veterans: 8.27%*¹

Five Largest Federal Employers

DOI: 6,368



Air Force: 5,911



VA: 5,374



Army: 4,316



Agriculture: 3,207



Race and Ethnicity

White, non-Hispanic	31,137	77.7%
Black/African American, non-Hispanic	2,754	6.9%
Hispanic or Latino	3,871	9.7%
Asian, non-Hispanic	1,104	2.8%
Two or more races	545	1.4%
American Indian and Alaska Native	529	1.3%
Native Hawaiian and Other Pacific Islander	105	0.3%

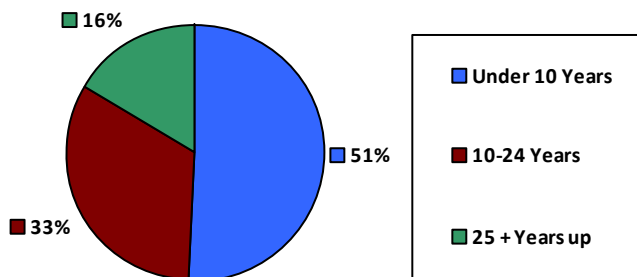
Gender

M	23,033	57.5%
F	17,014	42.5%

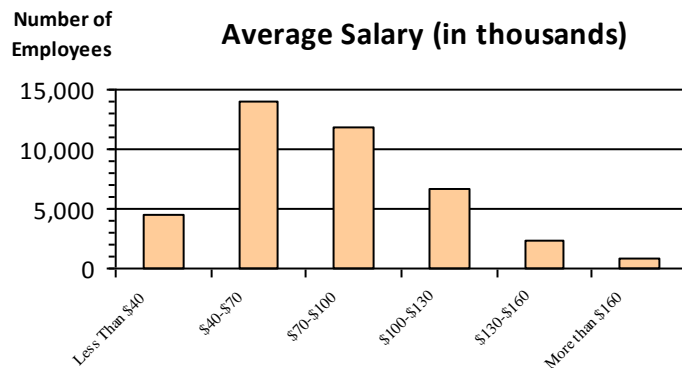
Age

<35	6,459	16.1%
35-54	21,807	54.4%
55+	11,781	29.4%

Length of Service



Average Salary (in thousands)



Educational Attainment

HS or Below	9,627	24.0%
Occupational Program	829	2.1%
Between HS and Bachelors	7,488	18.7%
Bachelors + Post Bachelors	13,503	33.7%
Masters and Post Grad	6,915	17.2%
Doctorate and Post Doc	1,618	4.0%

Type of Employment²

Administrative	15,519	38.7%
Professional	11,420	28.5%
Technical	6,972	17.4%
Clerical	2,262	5.6%
Other White Collar	1,637	4.1%
Blue Collar	2,236	5.6%

All data unless otherwise noted is provided by the US Office of Personnel Management for the December 2014 reporting period. ¹Non-Federal Workers Data calculated from the US Bureau of Labor Statistics 2014 Annual Averages https://www.bls.gov/news.release/archives/vet_03182015.pdf. ²Employment categories consistent with the definitions given by the US Office of Personnel Management "Introduction to the Position Classification Standards" 2009. For a description of the employment categories, refer to <http://www.opm.gov/policy-data-oversight/classification-qualifications/classifying-general-schedule-positions/positionclassificationintro.pdf>.

Who are the Civilian Federal Employees in

Colorado - 2013

Federal Workers in Colorado: 40,209

Percentage Who Are Veterans: 34.78%

Non-Federal Workers in Colorado: 2,542,000¹

*Percentage Who Are Veterans: 8.22%*¹

Five Largest Federal Employers

DOI: 6,410



Air Force: 6,080



VA: 5,198



Army: 4,184



Agriculture: 3,248



Race and Ethnicity

White, non-Hispanic	31,389	78.1%
Black/African American, non-Hispanic	2,724	6.8%
Hispanic or Latino	3,875	9.6%
Asian, non-Hispanic	1,110	2.8%
Two or more races	497	1.2%
American Indian and Alaska Native	525	1.3%
Native Hawaiian and Other Pacific Islander	84	0.2%

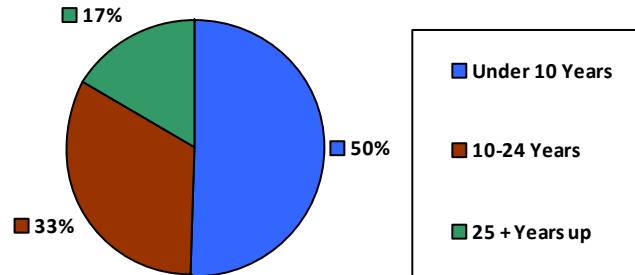
Gender

M	23,052	57.3%
F	17,157	42.7%

Age

<35	6,605	16.4%
35-54	21,795	54.2%
55+	11,809	29.4%

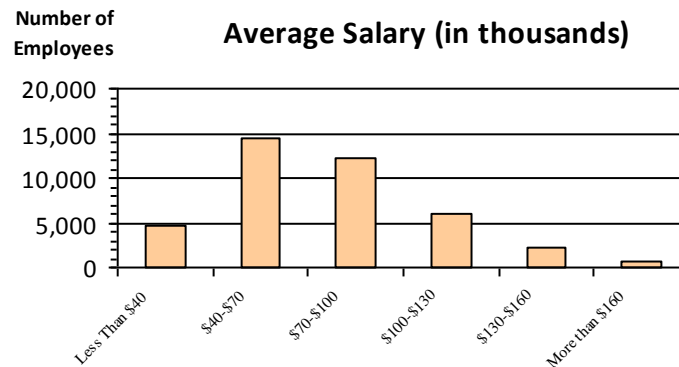
Length of Service



Educational Attainment

HS or Below	9,949	24.7%
Occupational Program	843	2.1%
Between HS and Bachelors	7,636	19.0%
Bachelors + Post Bachelors	13,491	33.5%
Masters and Post Grad	6,659	16.5%
Doctorate and Post Doc	1,571	3.9%

Average Salary (in thousands)



Type of Employment²

Administrative	15,404	38.3%
Professional	11,313	28.1%
Technical	6,855	17.0%
Clerical	2,634	6.6%
Other White Collar	1,786	4.4%
Blue Collar	2,215	5.5%

All data unless otherwise noted is provided by the US Office of Personnel Management for the December 2013 reporting period. ¹Non-Federal Workers Data calculated from the US Bureau of Labor Statistics 2013 Annual Averages https://www.bls.gov/news.release/archives/vet_03202014.pdf. ²Employment categories consistent with the definitions given by the US Office of Personnel Management "Introduction to the Position Classification Standards" 2009. For a description of the employment categories, refer to <http://www.opm.gov/policy-data-oversight/classification-qualifications/classifying-general-schedule-positions/positionclassificationintro.pdf>.