

## Who are the Civilian Federal Employees in

# Alaska - 2021

**Federal Workers in Alaska: 11,951**

Percentage Who Are Veterans: 39.41%

**Non-Federal Workers in Alaska: 326,000<sup>1</sup>**

Percentage Who Are Veterans: 10.12%<sup>1</sup>

### Five Largest Federal Employers

Air Force: 2,567



Army: 2,344



DOI: 1,909



DOT: 1,127



DHS: 965



### Race and Ethnicity

|  |       |       |
|--|-------|-------|
| White, non-Hispanic                        | 9,162 | 76.7% |
| Black/African American, non-Hispanic       | 629   | 5.3%  |
| Hispanic or Latino                         | 622   | 5.2%  |
| Asian, non-Hispanic                        | 456   | 3.8%  |
| Two or more races                          | 403   | 3.4%  |
| American Indian and Alaska Native          | 458   | 3.8%  |
| Native Hawaiian and Other Pacific Islander | 108   | 0.9%  |

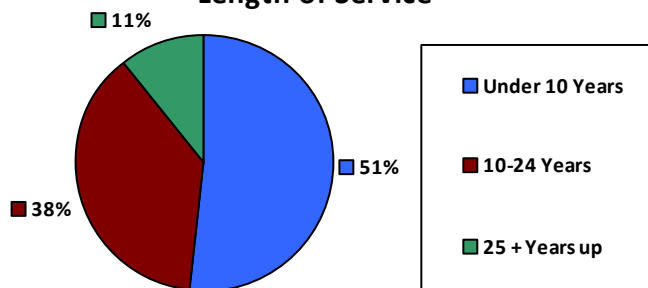
### Gender

|   |       |       |
|---|-------|-------|
| M | 7,371 | 61.7% |
| F | 4,580 | 38.3% |

### Age

|       |       |       |
|-------|-------|-------|
| <35   | 2,162 | 18.1% |
| 35-54 | 6,269 | 52.5% |
| 55+   | 3,520 | 29.5% |

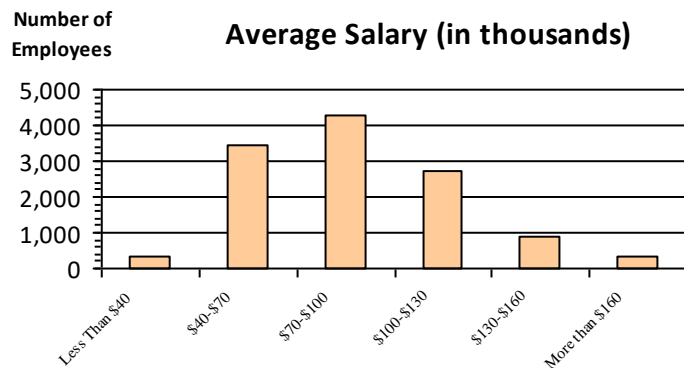
### Length of Service



### Educational Attainment

|                            |       |       |
|----------------------------|-------|-------|
| HS or Below                | 4,489 | 37.6% |
| Occupational Program       | 133   | 1.1%  |
| Between HS and Bachelors   | 2,024 | 16.9% |
| Bachelors + Post Bachelors | 3,241 | 27.1% |
| Masters and Post Grad      | 1,732 | 14.5% |
| Doctorate and Post Doc     | 305   | 2.6%  |

### Average Salary (in thousands)



### Type of Employment<sup>2</sup>

|                    |       |       |
|--------------------|-------|-------|
| Administrative     | 2,847 | 23.8% |
| Professional       | 1,864 | 15.6% |
| Technical          | 669   | 5.6%  |
| Clerical           | 356   | 3.0%  |
| Other White Collar | 1,582 | 13.2% |
| Blue Collar        | 1,638 | 13.7% |

All data unless otherwise noted is provided by the US Office of Personnel Management for the December 2015 reporting period. <sup>1</sup>Non-Federal Workers Data calculated from the US Bureau of Labor Statistics 2015 Annual Averages [https://www.bls.gov/news.release/archives/vet\\_03222016.pdf](https://www.bls.gov/news.release/archives/vet_03222016.pdf). <sup>2</sup>Employment categories consistent with the definitions given by the US Office of Personnel Management "Introduction to the Position Classification Standards" 2009. For a description of the employment categories, refer to <http://www.opm.gov/policy-data-oversight/classification-qualifications/classifying-general-schedule-positions/positionclassificationintro.pdf>.

## Who are the Civilian Federal Employees in

# Alaska - 2020

**Federal Workers in Alaska: 12,036**

Percentage Who Are Veterans: 39.97%

**Non-Federal Workers in Alaska: 314,000<sup>1</sup>**

Percentage Who Are Veterans: 10.51%<sup>1</sup>

### Five Largest Federal Employers

Air Force: 2,568



Army: 2,436



DOI: 1,926



DOT: 1,153



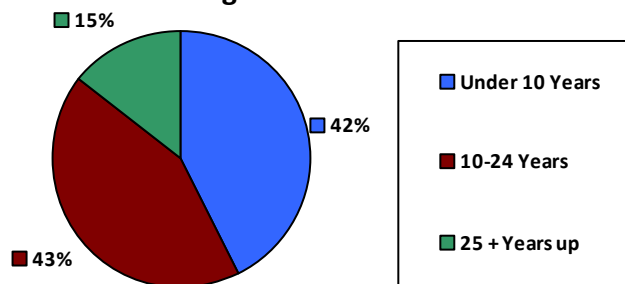
DHS: 979



### Race and Ethnicity

|  |       |       |
|--|-------|-------|
| White, non-Hispanic                        | 9,284 | 77.1% |
| Black/African American, non-Hispanic       | 666   | 5.5%  |
| Hispanic or Latino                         | 631   | 5.2%  |
| Asian, non-Hispanic                        | 454   | 3.8%  |
| Two or more races                          | 382   | 3.2%  |
| American Indian and Alaska Native          | 433   | 3.6%  |
| Native Hawaiian and Other Pacific Islander | 100   | 0.8%  |

### Length of Service



### Educational Attainment

|                            |       |       |
|----------------------------|-------|-------|
| HS or Below                | 4,548 | 37.8% |
| Occupational Program       | 137   | 1.1%  |
| Between HS and Bachelors   | 2,103 | 17.5% |
| Bachelors + Post Bachelors | 3,186 | 26.5% |
| Masters and Post Grad      | 1,728 | 14.3% |
| Doctorate and Post Doc     | 307   | 2.6%  |

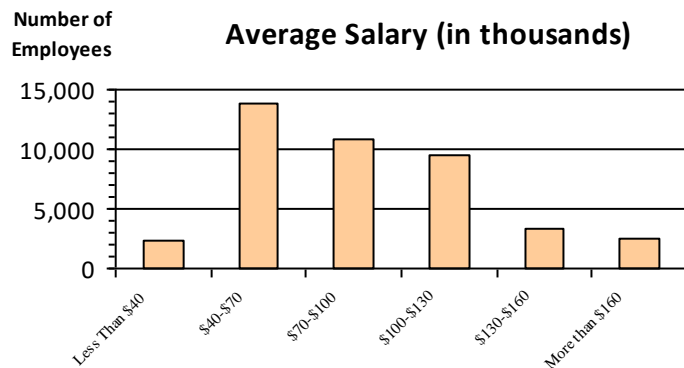
### Gender

|   |       |       |
|---|-------|-------|
| M | 7,448 | 61.9% |
| F | 4,588 | 38.1% |

### Age

|       |       |       |
|-------|-------|-------|
| <35   | 2,234 | 18.6% |
| 35-54 | 6,229 | 51.7% |
| 55+   | 3,573 | 29.7% |

### Average Salary (in thousands)



### Type of Employment<sup>2</sup>

|                    |       |       |
|--------------------|-------|-------|
| Administrative     | 4,627 | 38.4% |
| Professional       | 2,805 | 23.3% |
| Technical          | 1,929 | 16.0% |
| Clerical           | 666   | 5.5%  |
| Other White Collar | 367   | 3.0%  |
| Blue Collar        | 1,638 | 13.6% |

All data unless otherwise noted is provided by the US Office of Personnel Management for the December 2015 reporting period. <sup>1</sup>Non-Federal Workers Data calculated from the US Bureau of Labor Statistics 2015 Annual Averages [https://www.bls.gov/news.release/archives/vet\\_03222016.pdf](https://www.bls.gov/news.release/archives/vet_03222016.pdf). <sup>2</sup>Employment categories consistent with the definitions given by the US Office of Personnel Management "Introduction to the Position Classification Standards" 2009. For a description of the employment categories, refer to <http://www.opm.gov/policy-data-oversight/classification-qualifications/classifying-general-schedule-positions/positionclassificationintro.pdf>.

## Who are the Civilian Federal Employees in

# Alaska - 2019

**Federal Workers in Alaska: 11,661**

Percentage Who Are Veterans: 40.57%

**Non-Federal Workers in Alaska: 324,000<sup>1</sup>**

Percentage Who Are Veterans: 10.49%<sup>1</sup>

### Five Largest Federal Employers

Air Force: 2,414



Army: 2,342



DOI: 1,876



DOT: 1,131



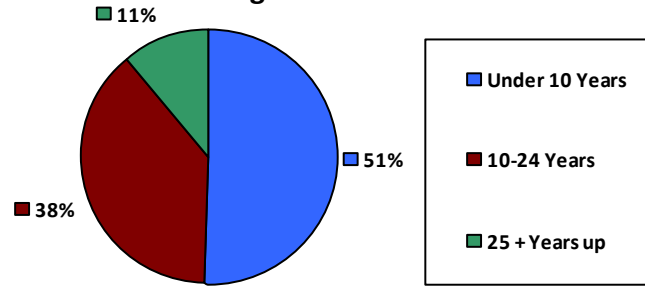
DHS: 982



### Race and Ethnicity

|  |       |       |
|--|-------|-------|
| White, non-Hispanic                        | 9,054 | 77.6% |
| Black/African American, non-Hispanic       | 649   | 5.6%  |
| Hispanic or Latino                         | 596   | 5.1%  |
| Asian, non-Hispanic                        | 430   | 3.7%  |
| Two or more races                          | 357   | 3.1%  |
| American Indian and Alaska Native          | 439   | 3.8%  |
| Native Hawaiian and Other Pacific Islander | 95    | 0.8%  |

### Length of Service



### Educational Attainment

|                            |       |       |
|----------------------------|-------|-------|
| HS or Below                | 4,265 | 36.6% |
| Occupational Program       | 156   | 1.3%  |
| Between HS and Bachelors   | 2,145 | 18.4% |
| Bachelors + Post Bachelors | 3,134 | 26.9% |
| Masters and Post Grad      | 1,615 | 13.8% |
| Doctorate and Post Doc     | 311   | 2.7%  |

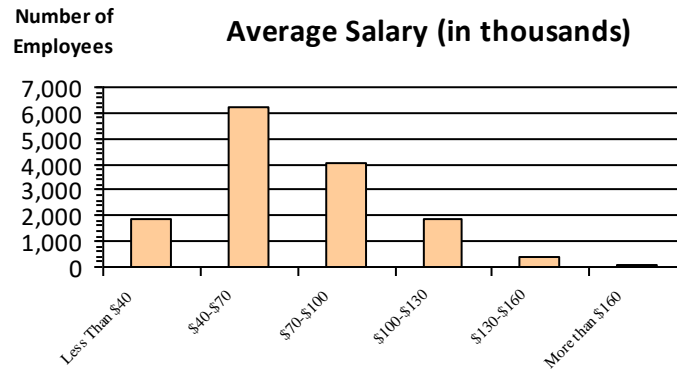
### Gender

|   |       |       |
|---|-------|-------|
| M | 7,261 | 62.3% |
| F | 4,400 | 37.7% |

### Age

|       |       |       |
|-------|-------|-------|
| <35   | 2,063 | 17.7% |
| 35-54 | 6,040 | 51.8% |
| 55+   | 3,558 | 30.5% |

### Average Salary (in thousands)



### Type of Employment<sup>2</sup>

|                    |       |       |
|--------------------|-------|-------|
| Administrative     | 4,442 | 38.1% |
| Professional       | 2,689 | 23.1% |
| Technical          | 1,894 | 16.2% |
| Clerical           | 673   | 5.8%  |
| Other White Collar | 369   | 3.2%  |
| Blue Collar        | 1,590 | 13.6% |

All data unless otherwise noted is provided by the US Office of Personnel Management for the December 2015 reporting period. <sup>1</sup>Non-Federal Workers Data calculated from the US Bureau of Labor Statistics 2015 Annual Averages [https://www.bls.gov/news.release/archives/vet\\_03222016.pdf](https://www.bls.gov/news.release/archives/vet_03222016.pdf). <sup>2</sup>Employment categories consistent with the definitions given by the US Office of Personnel Management "Introduction to the Position Classification Standards" 2009. For a description of the employment categories, refer to <http://www.opm.gov/policy-data-oversight/classification-qualifications/classifying-general-schedule-positions/positionclassificationintro.pdf>.

## Who are the Civilian Federal Employees in

# Alaska - 2018

**Federal Workers in Alaska: 11,642**

Percentage Who Are Veterans: 41.08%

**Non-Federal Workers in Alaska: 332,000**<sup>1</sup>

Percentage Who Are Veterans: 11.75%<sup>1</sup>

### Five Largest Federal Employers

Air Force: 2,387



Army: 2,294



DOI: 1,920



DOT: 1,129



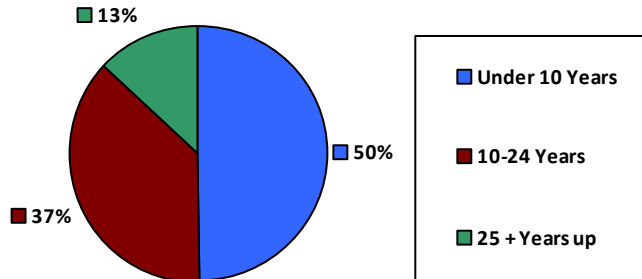
DHS: 951



### Race and Ethnicity

|  |       |       |
|--|-------|-------|
| White, non-Hispanic                        | 9,112 | 78.3% |
| Black/African American, non-Hispanic       | 638   | 5.5%  |
| Hispanic or Latino                         | 575   | 4.9%  |
| Asian, non-Hispanic                        | 417   | 3.6%  |
| Two or more races                          | 332   | 2.9%  |
| American Indian and Alaska Native          | 458   | 3.9%  |
| Native Hawaiian and Other Pacific Islander | 85    | 0.7%  |

### Length of Service



### Educational Attainment

|                            |       |       |
|----------------------------|-------|-------|
| HS or Below                | 4,168 | 35.8% |
| Occupational Program       | 175   | 1.5%  |
| Between HS and Bachelors   | 2,269 | 19.5% |
| Bachelors + Post Bachelors | 3,107 | 26.7% |
| Masters and Post Grad      | 1,594 | 13.7% |
| Doctorate and Post Doc     | 309   | 2.7%  |

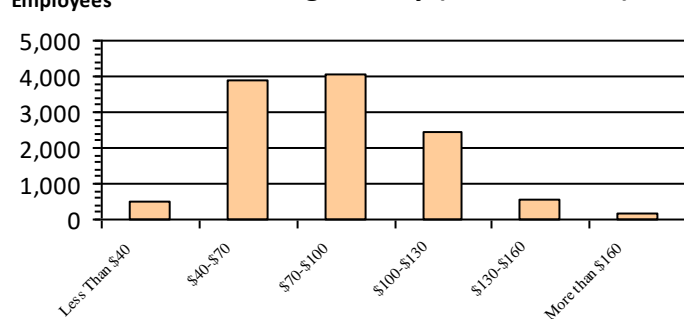
### Gender

|   |       |       |
|---|-------|-------|
| M | 7,274 | 62.5% |
| F | 4,363 | 37.5% |

### Age

|       |       |       |
|-------|-------|-------|
| <35   | 2,022 | 17.4% |
| 35-54 | 6,104 | 52.4% |
| 55+   | 3,516 | 30.2% |

### Average Salary (in thousands)



### Type of Employment<sup>2</sup>

|                    |       |       |
|--------------------|-------|-------|
| Administrative     | 4,374 | 37.6% |
| Professional       | 2,650 | 22.8% |
| Technical          | 1,906 | 16.4% |
| Clerical           | 681   | 5.8%  |
| Other White Collar | 370   | 3.2%  |
| Blue Collar        | 1,657 | 14.2% |

All data unless otherwise noted is provided by the US Office of Personnel Management for the December 2018 reporting period. <sup>1</sup>Non-Federal Workers Data calculated from the US Bureau of Labor Statistics 2018 Annual Averages [www.bls.gov/news.release/pdf/vet.pdf](http://www.bls.gov/news.release/pdf/vet.pdf). <sup>2</sup>Employment categories consistent with the definitions given by the US Office of Personnel Management "Introduction to the Position Classification Standards" 2009. For a description of the employment categories, refer to [www.opm.gov/policy-data-oversight/classification-qualifications/classifying-general-schedule-positions/positionclassificationintro.pdf](http://www.opm.gov/policy-data-oversight/classification-qualifications/classifying-general-schedule-positions/positionclassificationintro.pdf).

## Who are the Civilian Federal Employees in

# Alaska - 2017

**Federal Workers in Alaska: 11,720**

Percentage Who Are Veterans: 40.91%

**Non-Federal Workers in Alaska: 338,000<sup>1</sup>**

Percentage Who Are Veterans: 14.19%<sup>2</sup>

### Five Largest Federal Employers

Air Force: 2,384



Army: 2,218



DOI: 2,013



DOT: 1,180



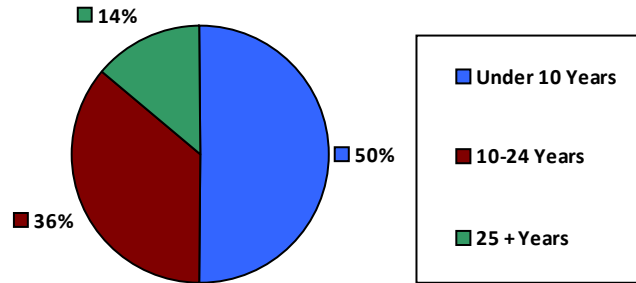
DHS: 1,003



### Race and Ethnicity

|  |       |       |
|--|-------|-------|
| White, non-Hispanic                        | 9,214 | 78.6% |
| Black/African American, non-Hispanic       | 631   | 5.4%  |
| Hispanic or Latino                         | 579   | 4.9%  |
| Asian, non-Hispanic                        | 415   | 3.5%  |
| Two or more races                          | 310   | 2.6%  |
| American Indian and Alaska Native          | 469   | 4.0%  |
| Native Hawaiian and Other Pacific Islander | 84    | 0.7%  |

### Length of Service



### Educational Attainment

|                            |       |       |
|----------------------------|-------|-------|
| HS or Below                | 4,182 | 35.7% |
| Occupational Program       | 195   | 1.7%  |
| Between HS and Bachelors   | 2,348 | 20.0% |
| Bachelors + Post Bachelors | 3,105 | 26.5% |
| Masters and Post Grad      | 1,557 | 13.3% |
| Doctorate and Post Doc     | 305   | 2.6%  |

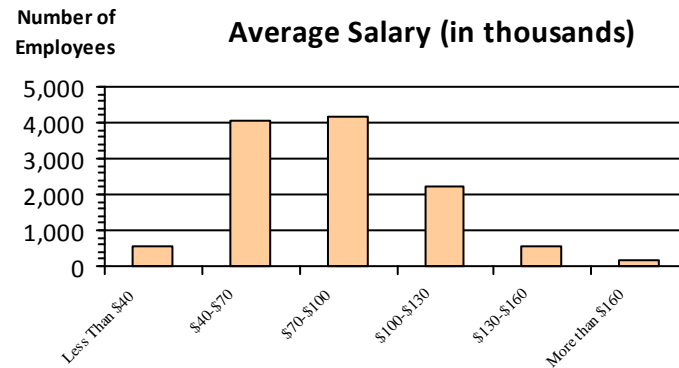
### Gender

|   |       |       |
|---|-------|-------|
| M | 7,368 | 62.9% |
| F | 4,350 | 37.1% |

### Age

|       |       |       |
|-------|-------|-------|
| <35   | 2,058 | 17.6% |
| 35-54 | 6,146 | 52.4% |
| 55+   | 3,516 | 30.0% |

### Average Salary (in thousands)



### Type of Employment<sup>2</sup>

|                    |       |       |
|--------------------|-------|-------|
| Administrative     | 4,411 | 37.6% |
| Professional       | 2,639 | 22.5% |
| Technical          | 1,921 | 16.4% |
| Clerical           | 732   | 6.2%  |
| Other White Collar | 341   | 2.9%  |
| Blue Collar        | 1,674 | 14.3% |

All data unless otherwise noted is provided by the US Office of Personnel Management for the December 2017 reporting period. Non-Federal Workers Data calculated from the US Bureau of Labor Statistics 2017 Annual Averages <https://www.bls.gov/news.release/vet.htm>.<sup>1</sup> Employment categories consistent with the definitions given by the US Office of Personnel Management "Introduction to the Position Classification Standards" (Revised: 2009), available at <https://www.opm.gov/policy-data-oversight/classification-qualifications/classifying-general-schedule-positions/positionclassificationintro.pdf>.<sup>2</sup>

## Who are the Civilian Federal Employees in

# Alaska - 2016

**Federal Workers in Alaska: 12,091**

Percentage Who Are Veterans: 40.13%

**Non-Federal Workers in Alaska: 334,000**<sup>1</sup>

Percentage Who Are Veterans: 12.87%<sup>1</sup>

### Five Largest Federal Employers

Air Force: 2,494



Army: 2,263



DOI: 2,214



DOT: 1,202



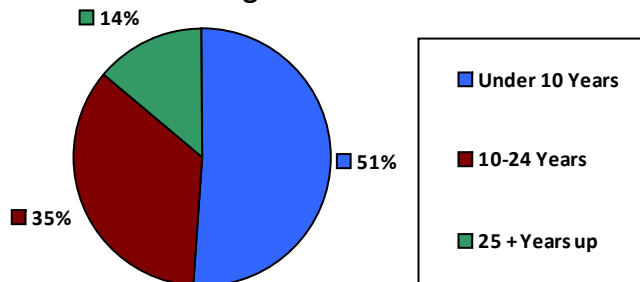
DHS: 947



### Race and Ethnicity

|  |       |       |
|--|-------|-------|
| White, non-Hispanic                        | 9,637 | 79.7% |
| Black/African American, non-Hispanic       | 623   | 5.2%  |
| Hispanic or Latino                         | 512   | 4.2%  |
| Asian, non-Hispanic                        | 419   | 3.5%  |
| Two or more races                          | 288   | 2.4%  |
| American Indian and Alaska Native          | 504   | 4.2%  |
| Native Hawaiian and Other Pacific Islander | 91    | 0.8%  |

### Length of Service



### Educational Attainment

|                            |       |       |
|----------------------------|-------|-------|
| HS or Below                | 4,364 | 36.1% |
| Occupational Program       | 228   | 1.9%  |
| Between HS and Bachelors   | 2,401 | 19.9% |
| Bachelors + Post Bachelors | 3,211 | 26.6% |
| Masters and Post Grad      | 1,571 | 13.0% |
| Doctorate and Post Doc     | 290   | 2.4%  |

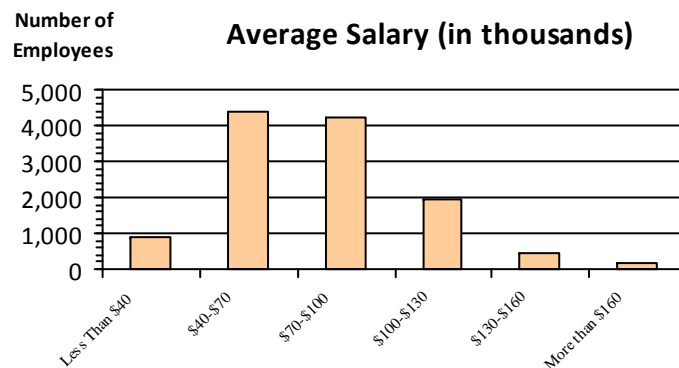
### Gender

|   |       |       |
|---|-------|-------|
| M | 7,627 | 63.1% |
| F | 4,464 | 36.9% |

### Age

|       |       |       |
|-------|-------|-------|
| <35   | 2,277 | 18.8% |
| 35-54 | 6,283 | 52.0% |
| 55+   | 3,531 | 29.2% |

### Average Salary (in thousands)



### Type of Employment<sup>2</sup>

|                    |       |       |
|--------------------|-------|-------|
| Administrative     | 4,454 | 36.8% |
| Professional       | 2,683 | 22.2% |
| Technical          | 2,041 | 16.9% |
| Clerical           | 746   | 6.2%  |
| Other White Collar | 386   | 3.2%  |
| Blue Collar        | 1,780 | 14.7% |

All data unless otherwise noted is provided by the US Office of Personnel Management for the December 2016 reporting period. <sup>1</sup>Non-Federal Workers Data calculated from the US Bureau of Labor Statistics 2015 Annual Averages [https://www.bls.gov/news.release/archives/vet\\_03222016.pdf](https://www.bls.gov/news.release/archives/vet_03222016.pdf). <sup>2</sup>Employment categories consistent with the definitions given by the US Office of Personnel Management "Introduction to the Position Classification Standards" 2009. For a description of the employment categories, refer to <http://www.opm.gov/policy-data-oversight/classification-qualifications/classifying-general-schedule-positions/positionclassificationintro.pdf>.

## Who are the Civilian Federal Employees in

# Alaska - 2015

**Federal Workers in Alaska: 11,932**

*Percentage Who Are Veterans: 40.35%*

**Non-Federal Workers in Alaska: 339,000<sup>1</sup>**

*Percentage Who Are Veterans: 12.98%<sup>1</sup>*

### Five Largest Federal Employers

Air Force: 2,514



Army: 2,241



DOI: 2,011



DOT: 1,214



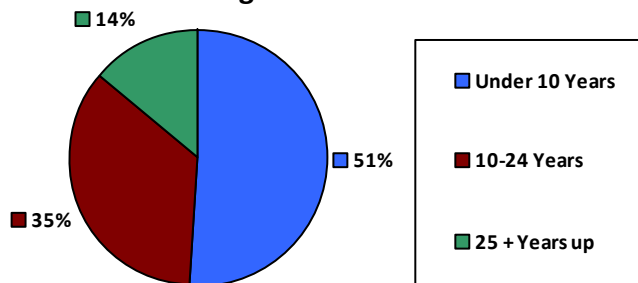
DHS: 904



#### Race and Ethnicity

|  |       |       |
|--|-------|-------|
| White, non-Hispanic                        | 9,575 | 80.2% |
| Black/African American, non-Hispanic       | 602   | 5.0%  |
| Hispanic or Latino                         | 497   | 4.2%  |
| Asian, non-Hispanic                        | 403   | 3.4%  |
| Two or more races                          | 257   | 2.2%  |
| American Indian and Alaska Native          | 513   | 4.3%  |
| Native Hawaiian and Other Pacific Islander | 82    | 0.7%  |

#### Length of Service



#### Educational Attainment

|                            |       |       |
|----------------------------|-------|-------|
| HS or Below                | 4,435 | 37.2% |
| Occupational Program       | 218   | 1.8%  |
| Between HS and Bachelors   | 2,341 | 19.6% |
| Bachelors + Post Bachelors | 3,135 | 26.3% |
| Masters and Post Grad      | 1,509 | 12.6% |
| Doctorate and Post Doc     | 271   | 2.3%  |

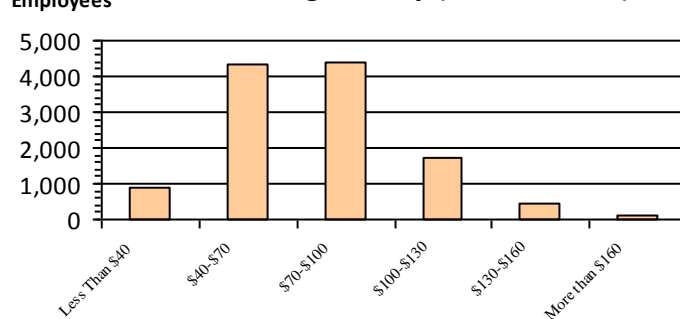
#### Gender

|   |       |       |
|---|-------|-------|
| M | 7,501 | 62.9% |
| F | 4,431 | 37.1% |

#### Age

|       |       |       |
|-------|-------|-------|
| <35   | 2,168 | 18.2% |
| 35-54 | 6,329 | 53.0% |
| 55+   | 3,435 | 28.8% |

#### Average Salary (in thousands)



#### Type of Employment<sup>2</sup>

|                    |       |       |
|--------------------|-------|-------|
| Administrative     | 4,372 | 36.6% |
| Professional       | 2,699 | 22.6% |
| Technical          | 2,017 | 16.9% |
| Clerical           | 674   | 5.6%  |
| Other White Collar | 404   | 3.4%  |
| Blue Collar        | 1,766 | 14.8% |

All data unless otherwise noted is provided by the US Office of Personnel Management for the December 2015 reporting period. <sup>1</sup>Non-Federal Workers Data calculated from the US Bureau of Labor Statistics 2015 Annual Averages [https://www.bls.gov/news.release/archives/vet\\_03222016.pdf](https://www.bls.gov/news.release/archives/vet_03222016.pdf). <sup>2</sup>Employment categories consistent with the definitions given by the US Office of Personnel Management "Introduction to the Position Classification Standards" 2009. For a description of the employment categories, refer to <http://www.opm.gov/policy-data-oversight/classification-qualifications/classifying-general-schedule-positions/positionclassificationintro.pdf>.



## Who are the Civilian Federal Employees in

# Alaska - 2014

**Federal Workers in Alaska: 11,620**

Percentage Who Are Veterans: 39.76%

**Non-Federal Workers in Alaska: 340,000**<sup>1</sup>

Percentage Who Are Veterans: 13.23%<sup>1</sup>

### Five Largest Federal Employers

Air Force: 2,307



Army: 2,156



DOI: 2,009



DOT: 1,178



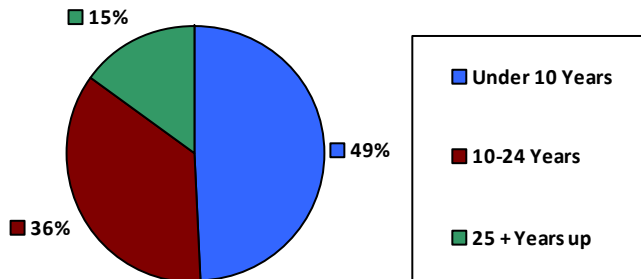
DHS: 886



### Race and Ethnicity

|  |       |       |
|--|-------|-------|
| White, non-Hispanic                        | 9,443 | 81.3% |
| Black/African American, non-Hispanic       | 572   | 4.9%  |
| Hispanic or Latino                         | 429   | 3.7%  |
| Asian, non-Hispanic                        | 393   | 3.4%  |
| Two or more races                          | 217   | 1.9%  |
| American Indian and Alaska Native          | 499   | 4.3%  |
| Native Hawaiian and Other Pacific Islander | 66    | 0.6%  |

### Length of Service



### Educational Attainment

|                            |       |       |
|----------------------------|-------|-------|
| HS or Below                | 4,314 | 37.1% |
| Occupational Program       | 202   | 1.7%  |
| Between HS and Bachelors   | 2,364 | 20.3% |
| Bachelors + Post Bachelors | 3,041 | 26.2% |
| Masters and Post Grad      | 1,421 | 12.2% |
| Doctorate and Post Doc     | 250   | 2.2%  |

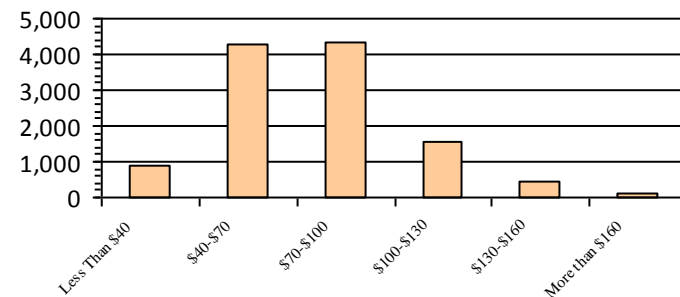
### Gender

|   |       |       |
|---|-------|-------|
| M | 7,275 | 62.6% |
| F | 4,345 | 37.4% |

### Age

|       |       |       |
|-------|-------|-------|
| <35   | 1,924 | 16.6% |
| 35-54 | 6,271 | 54.0% |
| 55+   | 3,425 | 29.5% |

### Average Salary (in thousands)



### Type of Employment<sup>2</sup>

|                    |       |       |
|--------------------|-------|-------|
| Administrative     | 4,309 | 37.1% |
| Professional       | 2,642 | 22.7% |
| Technical          | 1,956 | 16.8% |
| Clerical           | 638   | 5.5%  |
| Other White Collar | 368   | 3.2%  |
| Blue Collar        | 1,707 | 14.7% |

All data unless otherwise noted is provided by the US Office of Personnel Management for the December 2014 reporting period. <sup>1</sup>Non-Federal Workers Data calculated from the US Bureau of Labor Statistics 2014 Annual Averages [https://www.bls.gov/news.release/archives/vet\\_03182015.pdf](https://www.bls.gov/news.release/archives/vet_03182015.pdf). <sup>2</sup>Employment categories consistent with the definitions given by the US Office of Personnel Management "Introduction to the Position Classification Standards" 2009. For a description of the employment categories, refer to <http://www.opm.gov/policy-data-oversight/classification-qualifications/classifying-general-schedule-positions/positionclassificationintro.pdf>.



## Who are the Civilian Federal Employees in

# Alaska - 2013

**Federal Workers in Alaska: 11,870**

Percentage Who Are Veterans: 39.33%

**Non-Federal Workers in Alaska: 341,000**<sup>1</sup>

Percentage Who Are Veterans: 13.20%<sup>1</sup>

### Five Largest Federal Employers

Air Force: 2,285



Army: 2,225



DOI: 2,096



DOT: 1,166



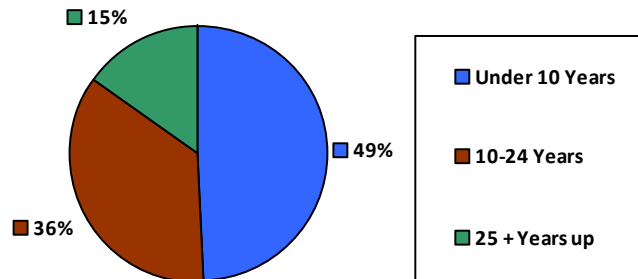
DHS: 989



### Race and Ethnicity

|  |       |       |
|--|-------|-------|
| White, non-Hispanic                        | 9,680 | 81.5% |
| Black/African American, non-Hispanic       | 592   | 5.0%  |
| Hispanic or Latino                         | 417   | 3.5%  |
| Asian, non-Hispanic                        | 391   | 3.3%  |
| Two or more races                          | 191   | 1.6%  |
| American Indian and Alaska Native          | 539   | 4.5%  |
| Native Hawaiian and Other Pacific Islander | 57    | 0.5%  |

### Length of Service



### Educational Attainment

|                            |       |       |
|----------------------------|-------|-------|
| HS or Below                | 4,460 | 37.6% |
| Occupational Program       | 215   | 1.8%  |
| Between HS and Bachelors   | 2,445 | 20.6% |
| Bachelors + Post Bachelors | 3,080 | 25.9% |
| Masters and Post Grad      | 1,371 | 11.5% |
| Doctorate and Post Doc     | 260   | 2.2%  |

### Gender

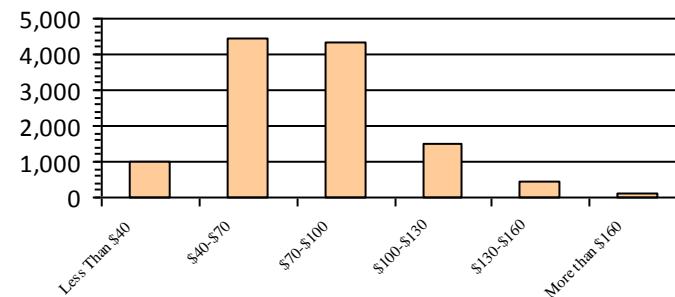
|   |       |       |
|---|-------|-------|
| M | 7,406 | 62.4% |
| F | 4,464 | 37.6% |

### Age

|       |       |       |
|-------|-------|-------|
| <35   | 1,981 | 16.7% |
| 35-54 | 6,448 | 54.3% |
| 55+   | 3,441 | 29.0% |

Number of Employees

### Average Salary (in thousands)



### Type of Employment<sup>2</sup>

|                    |       |       |
|--------------------|-------|-------|
| Administrative     | 4,362 | 36.7% |
| Professional       | 2,683 | 22.6% |
| Technical          | 1,913 | 16.1% |
| Clerical           | 803   | 6.8%  |
| Other White Collar | 404   | 3.4%  |
| Blue Collar        | 1,703 | 14.3% |

All data unless otherwise noted is provided by the US Office of Personnel Management for the December 2013 reporting period. <sup>1</sup>Non-Federal Workers Data calculated from the US Bureau of Labor Statistics 2013 Annual Averages [https://www.bls.gov/news.release/archives/vet\\_03202014.pdf](https://www.bls.gov/news.release/archives/vet_03202014.pdf). <sup>2</sup>Employment categories consistent with the definitions given by the US Office of Personnel Management "Introduction to the Position Classification Standards" 2009. For a description of the employment categories, refer to <http://www.opm.gov/policy-data-oversight/classification-qualifications/classifying-general-schedule-positions/positionclassificationintro.pdf>.