

Who are the Civilian Federal Employees in

Alabama - 2022

Federal Workers in Alabama: 42,390

Percentage Who Are Veterans: 31.75%

Non-Federal Workers in Alabama: 2,223,000¹

Percentage Who Are Veterans: 7.96%¹

Five Largest Federal Employers

Army: 17,232



VA: 7,361



Defense: 4,168



SSA: 2,509



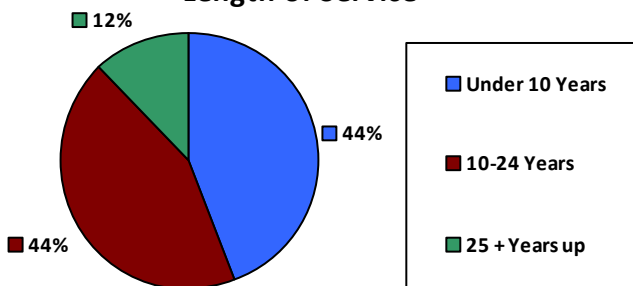
Justice: 2,439



Race and Ethnicity

White, non-Hispanic	25,489	60.1%
Black/African American, non-Hispanic	13,810	32.6%
Hispanic or Latino	1,251	3.0%
Asian, non-Hispanic	679	1.6%
Two or more races	713	1.7%
American Indian and Alaska Native	269	0.6%
Native Hawaiian and Other Pacific Islander	70	0.2%

Length of Service



Educational Attainment

HS or Below	10,189	24.0%
Occupational Program	661	1.6%
Between HS and Bachelors	5,734	13.5%
Bachelors + Post Bachelors	14,322	33.8%
Masters and Post Grad	10,129	23.9%
Doctorate and Post Doc	1,296	3.1%

Gender

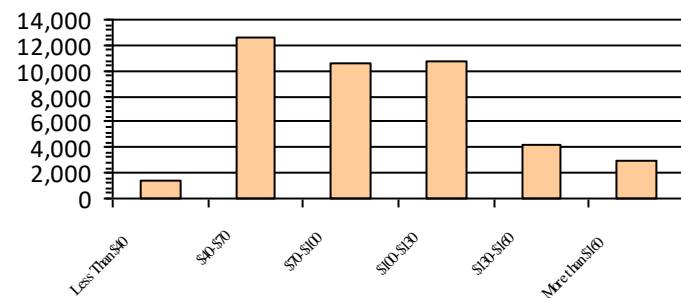
M	23,480	55.4%
F	18,910	44.6%

Age

<35	6,700	15.8%
35-54	22,226	52.4%
55+	13,464	31.8%

Number of Employees

Average Salary (in thousands)



Type of Employment²

Administrative	16,918	39.9%
Professional	13,846	32.7%
Technical	5,392	12.7%
Clerical	1,628	3.8%
Other White Collar	1,182	2.8%
Blue Collar	3,406	8.0%

All data unless otherwise noted is provided by the US Office of Personnel Management for the December 2022 reporting period. ¹Non-Federal Workers Data calculated from the US Bureau of Labor Statistics 2022 Annual Averages <https://www.bls.gov/news.release/pdf/vet.pdf>. ²Employment categories consistent with the definitions given by the US Office of Personnel Management "Introduction to the Position Classification Standards" 2009. For a description of the employment categories, refer to <https://www.opm.gov/policy-data-oversight/classification-qualifications/classifying-general-schedule-positions/positionclassificationintro.pdf>.