

Who are the Civilian Federal Employees in

Alabama - 2021

Federal Workers in Alabama: 42,359

Percentage Who Are Veterans: 32.36%

Non-Federal Workers in Alabama: 2,109,000¹

Percentage Who Are Veterans: 8.34%¹

Five Largest Federal Employers

Army: 18,040



VA: 6,883



Defense: 3,652



SSA: 2,533



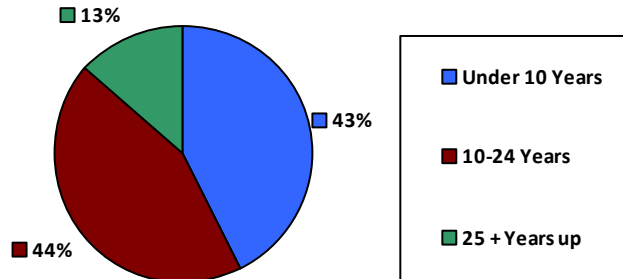
Air Force: 2,379



Race and Ethnicity

White, non-Hispanic	25,842	61.0%
Black/African American, non-Hispanic	13,534	31.9%
Hispanic or Latino	1,213	2.9%
Asian, non-Hispanic	656	1.5%
Two or more races	680	1.6%
American Indian and Alaska Native	272	0.6%
Native Hawaiian and Other Pacific Islander	68	0.2%

Length of Service



Educational Attainment

HS or Below	10,200	24.1%
Occupational Program	669	1.6%
Between HS and Bachelors	5,837	13.8%
Bachelors + Post Bachelors	14,374	33.9%
Masters and Post Grad	9,975	23.5%
Doctorate and Post Doc	1,247	2.9%

Gender

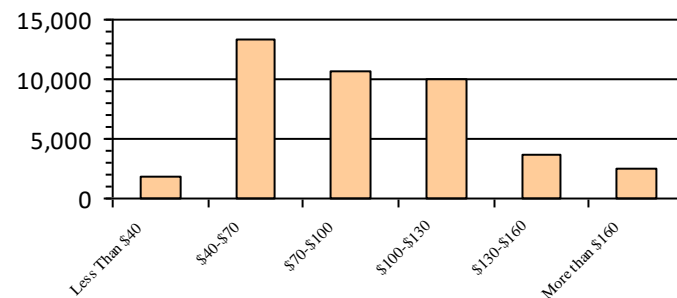
M	23,914	56.4%
F	18,445	43.5%

Age

<35	6,811	16.1%
35-54	21,957	51.8%
55+	13,591	32.1%

Number of Employees

Average Salary (in thousands)



Type of Employment²

Administrative	13,727	32.4%
Professional	5,500	13.0%
Technical	1,564	3.7%
Clerical	1,265	3.0%
Other White Collar	3,821	9.0%
Blue Collar	4,190	9.9%

All data unless otherwise noted is provided by the US Office of Personnel Management for the December 2015 reporting period. ¹Non-Federal Workers Data calculated from the US Bureau of Labor Statistics 2015 Annual Averages https://www.bls.gov/news.release/archives/vet_03222016.pdf. ²Employment categories consistent with the definitions given by the US Office of Personnel Management "Introduction to the Position Classification Standards" 2009. For a description of the employment categories, refer to <http://www.opm.gov/policy-data-oversight/classification-qualifications/classifying-general-schedule-positions/positionclassificationintro.pdf>.

Who are the Civilian Federal Employees in

Alabama - 2020

Federal Workers in Alabama: 42,506

Percentage Who Are Veterans: 32.84%

Non-Federal Workers in Alabama: 2,067,000¹

Percentage Who Are Veterans: 7.50%¹

Five Largest Federal Employers

Army: 18,406



VA: 6,957



Defense: 3,708



SSA: 2,544



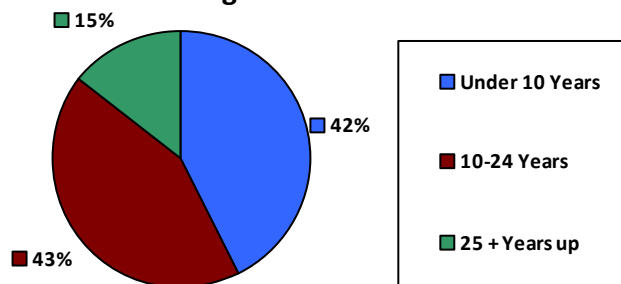
Air Force: 2,449



Race and Ethnicity

White, non-Hispanic	26,014	61.2%
Black/African American, non-Hispanic	13,598	32.0%
Hispanic or Latino	1,185	2.8%
Asian, non-Hispanic	653	1.5%
Two or more races	638	1.5%
American Indian and Alaska Native	288	0.7%
Native Hawaiian and Other Pacific Islander	68	0.2%

Length of Service



Educational Attainment

HS or Below	10,311	24.3%
Occupational Program	709	1.7%
Between HS and Bachelors	5,944	14.0%
Bachelors + Post Bachelors	14,426	33.9%
Masters and Post Grad	9,845	23.1%
Doctorate and Post Doc	1,224	2.9%

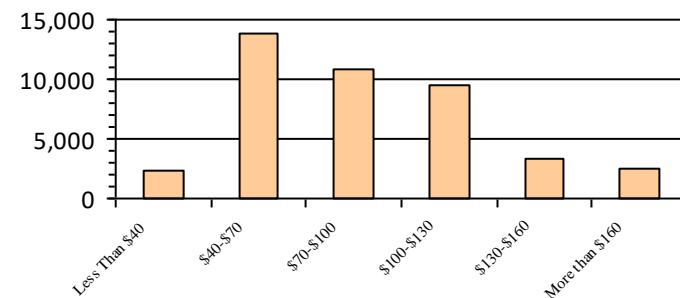
Gender

M	24,129	56.8%
F	18,376	43.2%

Age

<35	7,062	16.6%
35-54	21,776	51.2%
55+	13,668	32.2%

Average Salary (in thousands)



Type of Employment²

Administrative	16,054	37.8%
Professional	13,673	32.2%
Technical	5,599	13.2%
Clerical	1,668	3.9%
Other White Collar	1,304	3.1%
Blue Collar	4,190	9.9%

All data unless otherwise noted is provided by the US Office of Personnel Management for the December 2015 reporting period. ¹Non-Federal Workers Data calculated from the US Bureau of Labor Statistics 2015 Annual Averages https://www.bls.gov/news.release/archives/vet_03222016.pdf. ²Employment categories consistent with the definitions given by the US Office of Personnel Management "Introduction to the Position Classification Standards" 2009. For a description of the employment categories, refer to <http://www.opm.gov/policy-data-oversight/classification-qualifications/classifying-general-schedule-positions/positionclassificationintro.pdf>.

Who are the Civilian Federal Employees in

Alabama - 2019

Federal Workers in Alabama: 41,615

Percentage Who Are Veterans: 33.38%

Non-Federal Workers in Alabama: 2,181,000¹

Percentage Who Are Veterans: 7.70%¹

Five Largest Federal Employers

Army: 18,286



VA: 6,739



Defense: 3,657



SSA: 2,573



Air Force: 2,318



Race and Ethnicity

White, non-Hispanic	25,466	61.2%
Black/African American, non-Hispanic	13,332	32.0%
Hispanic or Latino	1,150	2.8%
Asian, non-Hispanic	649	1.6%
Two or more races	604	1.5%
American Indian and Alaska Native	300	0.7%
Native Hawaiian and Other Pacific Islander	69	0.2%

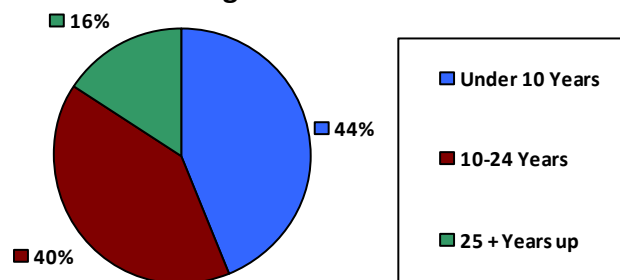
Gender

M	23,754	57.1%
F	17,856	42.9%

Age

<35	6,678	16.0%
35-54	21,483	51.6%
55+	13,454	32.3%

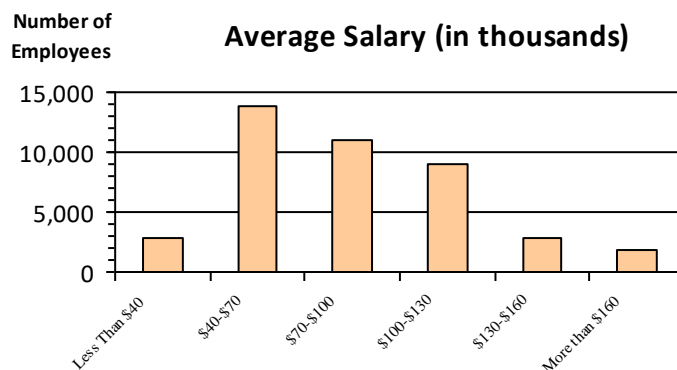
Length of Service



Educational Attainment

HS or Below	9,504	22.8%
Occupational Program	956	2.3%
Between HS and Bachelors	6,131	14.7%
Bachelors + Post Bachelors	14,199	34.1%
Masters and Post Grad	9,521	22.9%
Doctorate and Post Doc	1,260	3.0%

Average Salary (in thousands)



Type of Employment²

Administrative	15,490	37.2%
Professional	13,415	32.2%
Technical	5,632	13.5%
Clerical	1,622	3.9%
Other White Collar	1,272	3.1%
Blue Collar	4,155	10.0%

All data unless otherwise noted is provided by the US Office of Personnel Management for the December 2015 reporting period. ¹Non-Federal Workers Data calculated from the US Bureau of Labor Statistics 2015 Annual Averages https://www.bls.gov/news.release/archives/vet_03222016.pdf. ²Employment categories consistent with the definitions given by the US Office of Personnel Management "Introduction to the Position Classification Standards" 2009. For a description of the employment categories, refer to <http://www.opm.gov/policy-data-oversight/classification-qualifications/classifying-general-schedule-positions/positionclassificationintro.pdf>.

Who are the Civilian Federal Employees in

Alabama - 2018

Federal Workers in Alabama: 40,885

Percentage Who Are Veterans: 33.83%

Non-Federal Workers in Alabama: 2,107,000¹

Percentage Who Are Veterans: 7.64%¹

Five Largest Federal Employers

Army: 18,121



VA: 6,455



Defense: 3,485



SSA: 2,503



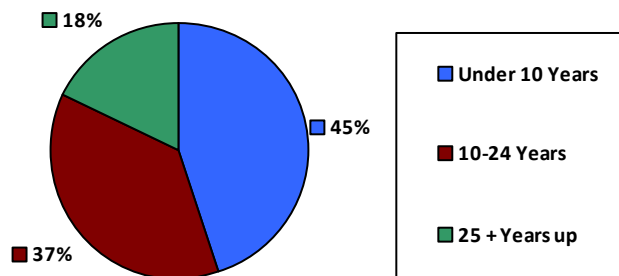
Air Force: 2,441



Race and Ethnicity

White, non-Hispanic	25,181	61.6%
Black/African American, non-Hispanic	12,973	31.7%
Hispanic or Latino	1,114	2.7%
Asian, non-Hispanic	650	1.6%
Two or more races	584	1.4%
American Indian and Alaska Native	303	0.7%
Native Hawaiian and Other Pacific Islander	64	0.2%

Length of Service



Educational Attainment

HS or Below	9,161	22.4%
Occupational Program	972	2.4%
Between HS and Bachelors	6,093	14.9%
Bachelors + Post Bachelors	14,117	34.5%
Masters and Post Grad	9,289	22.7%
Doctorate and Post Doc	1,214	3.0%

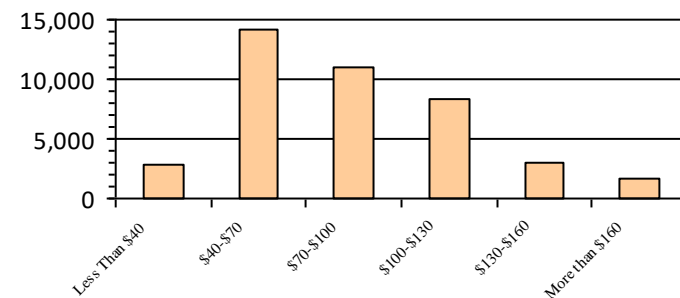
Gender

M	23,579	57.7%
F	17,286	42.3%

Age

<35	6,379	15.6%
35-54	21,327	52.2%
55+	13,179	32.2%

Average Salary (in thousands)



Type of Employment²

Administrative	15,121	37.0%
Professional	13,196	32.3%
Technical	5,653	13.8%
Clerical	1,638	4.0%
Other White Collar	1,195	2.9%
Blue Collar	4,060	9.9%

All data unless otherwise noted is provided by the US Office of Personnel Management for the December 2018 reporting period. ¹Non-Federal Workers Data calculated from the US Bureau of Labor Statistics 2018 Annual Averages www.bls.gov/news.release/pdf/vet.pdf. ²Employment categories consistent with the definitions given by the US Office of Personnel Management "Introduction to the Position Classification Standards" 2009. For a description of the employment categories, refer to www.opm.gov/policy-data-oversight/classification-qualifications/classifying-general-schedule-positions/positionclassificationintro.pdf.

Who are the Civilian Federal Employees in

Alabama - 2017

Federal Workers in Alabama: 40,321

Percentage Who Are Veterans: 34.08%

Non-Federal Workers in Alabama: 2,059,000¹

Percentage Who Are Veterans: 9.46%²

Five Largest Federal Employers

Army: 17,698



VA: 6,331



Defense: 3,459



SSA: 2,502



Air Force: 2,344



Race and Ethnicity

White, non-Hispanic	24,920	61.8%
Black/African American, non-Hispanic	12,790	31.7%
Hispanic or Latino	1,067	2.6%
Asian, non-Hispanic	633	1.6%
Two or more races	525	1.3%
American Indian and Alaska Native	318	0.8%
Native Hawaiian and Other Pacific Islander	64	0.2%

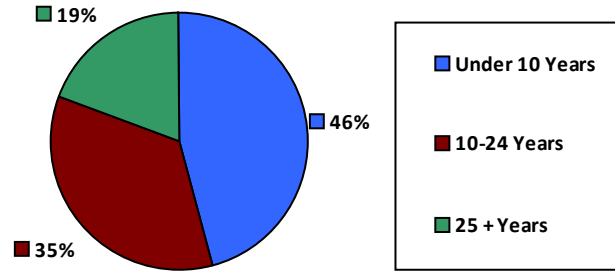
Gender

M	23,182	57.5%
F	17,123	42.5%

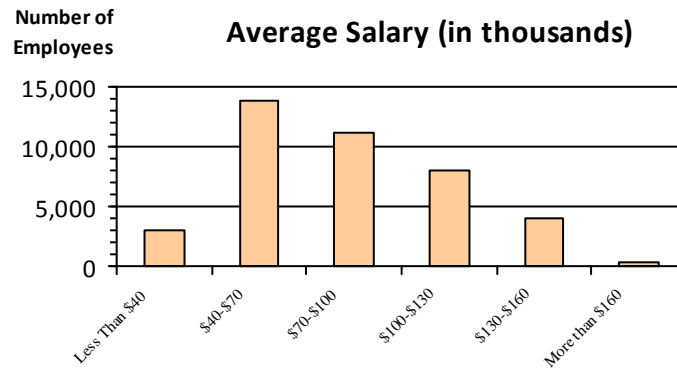
Age

<35	6,147	15.2%
35-54	21,362	53.0%
55+	12,812	31.8%

Length of Service



Average Salary (in thousands)



Educational Attainment

HS or Below	9,055	22.5%
Occupational Program	976	2.4%
Between HS and Bachelors	6,088	15.1%
Bachelors + Post Bachelors	14,037	34.8%
Masters and Post Grad	8,998	22.3%
Doctorate and Post Doc	1,129	2.8%

Type of Employment²

Administrative	14,907	37.0%
Professional	13,076	32.4%
Technical	5,786	14.3%
Clerical	1,645	4.1%
Other White Collar	1,210	3.0%
Blue Collar	3,696	9.2%

All data unless otherwise noted is provided by the US Office of Personnel Management for the December 2017 reporting period. Non-Federal Workers Data calculated from the US Bureau of Labor Statistics 2017 Annual Averages <https://www.bls.gov/news.release/vet.htm>.¹ Employment categories consistent with the definitions given by the US Office of Personnel Management "Introduction to the Position Classification Standards" (Revised: 2009), available at <https://www.opm.gov/policy-data-oversight/classification-qualifications/classifying-general-schedule-positions/positionclassificationintro.pdf>.²

Who are the Civilian Federal Employees in

Alabama - 2016

Federal Workers in Alabama: 40,668

Percentage Who Are Veterans: 34.08%

Non-Federal Workers in Alabama: 2,032,000¹

Percentage Who Are Veterans: 9.69%¹

Five Largest Federal Employers

Army: 17,968



VA: 6,369



Defense: 3,457



SSA: 2,512



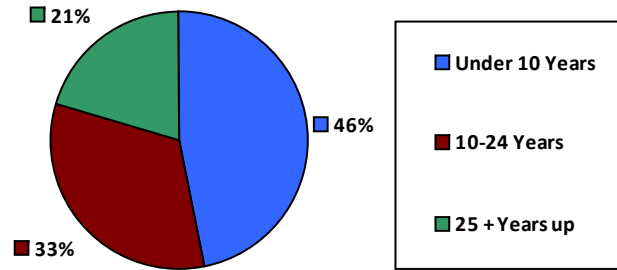
Air Force: 2,428



Race and Ethnicity

White, non-Hispanic	25,509	62.7%
Black/African American, non-Hispanic	12,638	31.1%
Hispanic or Latino	1,014	2.5%
Asian, non-Hispanic	615	1.5%
Two or more races	498	1.2%
American Indian and Alaska Native	331	0.8%
Native Hawaiian and Other Pacific Islander	61	0.1%

Length of Service



Educational Attainment

HS or Below	9,343	23.0%
Occupational Program	1,034	2.5%
Between HS and Bachelors	6,217	15.3%
Bachelors + Post Bachelors	14,244	35.0%
Masters and Post Grad	8,721	21.4%
Doctorate and Post Doc	1,085	2.7%

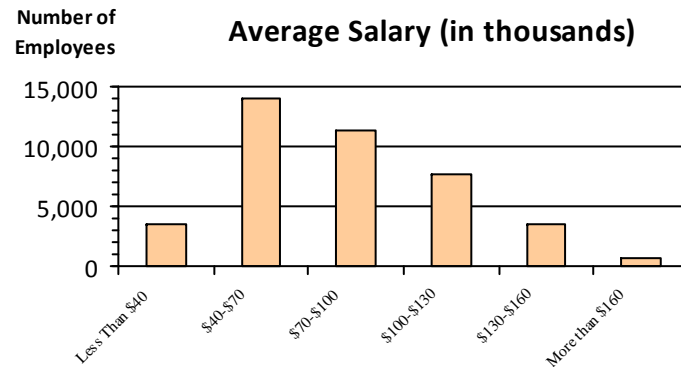
Gender

M	23,455	57.7%
F	17,210	42.3%

Age

<35	6,394	15.7%
35-54	21,787	53.6%
55+	12,487	30.7%

Average Salary (in thousands)



Type of Employment²

Administrative	14,902	36.6%
Professional	13,105	32.2%
Technical	5,967	14.7%
Clerical	1,661	4.1%
Other White Collar	1,255	3.1%
Blue Collar	3,776	9.3%

All data unless otherwise noted is provided by the US Office of Personnel Management for the December 2016 reporting period. ¹Non-Federal Workers Data calculated from the US Bureau of Labor Statistics 2015 Annual Averages https://www.bls.gov/news.release/archives/vet_03222016.pdf. ²Employment categories consistent with the definitions given by the US Office of Personnel Management "Introduction to the Position Classification Standards" 2009. For a description of the employment categories, refer to <http://www.opm.gov/policy-data-oversight/classification-qualifications/classifying-general-schedule-positions/positionclassificationintro.pdf>.

Who are the Civilian Federal Employees in

Alabama - 2015

Federal Workers in Alabama: 40,105

Percentage Who Are Veterans: 33.64%

Non-Federal Workers in Alabama: 2,017,000¹

Percentage Who Are Veterans: 9.07%¹

Five Largest Federal Employers

Army: 18,032



VA: 6,008



Defense: 3,367



SSA: 2,553



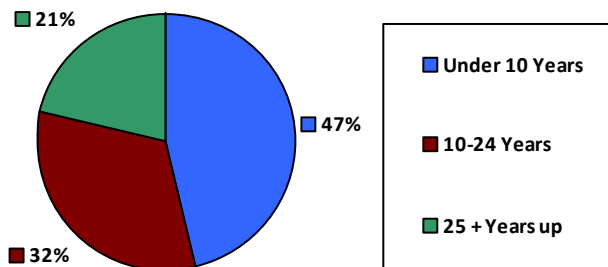
Air Force: 2,361



Race and Ethnicity

White, non-Hispanic	25,502	63.6%
Black/African American, non-Hispanic	12,178	30.4%
Hispanic or Latino	972	2.4%
Asian, non-Hispanic	601	1.5%
Two or more races	448	1.1%
American Indian and Alaska Native	351	0.9%
Native Hawaiian and Other Pacific Islander	53	0.1%

Length of Service



Educational Attainment

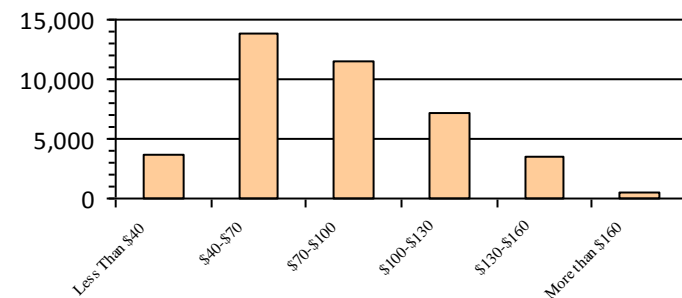
HS or Below	9,240	23.0%
Occupational Program	1,092	2.7%
Between HS and Bachelors	6,266	15.6%
Bachelors + Post Bachelors	14,284	35.6%
Masters and Post Grad	8,219	20.5%
Doctorate and Post Doc	982	2.4%

Gender

Age

M	23,147	57.7%	<35	6,373	15.9%
			35-54	21,786	54.3%
F	16,958	42.3%	55+	11,946	29.8%

Average Salary (in thousands)



Type of Employment²

Administrative	14,773	36.8%
Professional	12,816	32.0%
Technical	5,989	14.9%
Clerical	1,531	3.8%
Other White Collar	1,220	3.0%
Blue Collar	3,774	9.4%

All data unless otherwise noted is provided by the US Office of Personnel Management for the December 2015 reporting period. ¹Non-Federal Workers Data calculated from the US Bureau of Labor Statistics 2015 Annual Averages https://www.bls.gov/news.release/archives/vet_03222016.pdf. ²Employment categories consistent with the definitions given by the US Office of Personnel Management "Introduction to the Position Classification Standards" 2009. For a description of the employment categories, refer to <http://www.opm.gov/policy-data-oversight/classification-qualifications/classifying-general-schedule-positions/positionclassificationintro.pdf>.

Who are the Civilian Federal Employees in

Alabama - 2014

Federal Workers in Alabama: 40,254

Percentage Who Are Veterans: 33.22%

Non-Federal Workers in Alabama: 2,004,000¹

Percentage Who Are Veterans: 7.98%¹

Five Largest Federal Employers

Army: 18,501



VA: 5,726



Defense: 3,442



SSA: 2,531



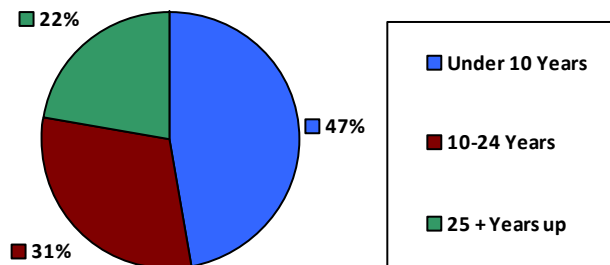
NASA Logo: 2,393



Race and Ethnicity

White, non-Hispanic	25,958	64.5%
Black/African American, non-Hispanic	11,898	29.6%
Hispanic or Latino	940	2.3%
Asian, non-Hispanic	595	1.5%
Two or more races	423	1.1%
American Indian and Alaska Native	381	0.9%
Native Hawaiian and Other Pacific Islander	57	0.1%

Length of Service



Educational Attainment

HS or Below	9,615	23.9%
Occupational Program	1,065	2.6%
Between HS and Bachelors	6,307	15.7%
Bachelors + Post Bachelors	14,510	36.0%
Masters and Post Grad	7,764	19.3%
Doctorate and Post Doc	964	2.4%

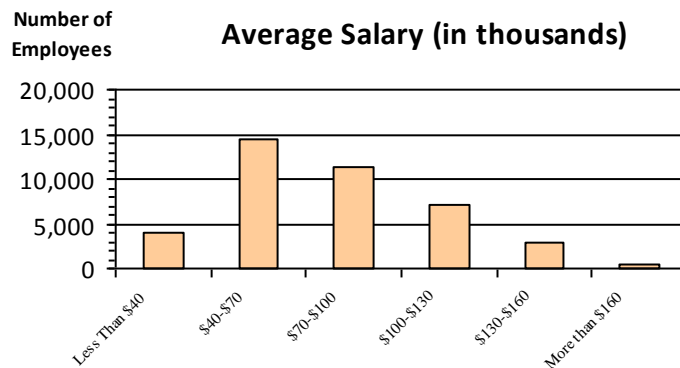
Gender

M	23,317	57.9%
F	16,937	42.1%

Age

<35	6,625	16.5%
35-54	22,103	54.9%
55+	11,526	28.6%

Average Salary (in thousands)



Type of Employment²

Administrative	14,764	36.7%
Professional	12,810	31.8%
Technical	5,974	14.8%
Clerical	1,554	3.9%
Other White Collar	1,157	2.9%
Blue Collar	3,990	9.9%

All data unless otherwise noted is provided by the US Office of Personnel Management for the December 2014 reporting period. ¹Non-Federal Workers Data calculated from the US Bureau of Labor Statistics 2014 Annual Averages https://www.bls.gov/news.release/archives/vet_03182015.pdf. ²Employment categories consistent with the definitions given by the US Office of Personnel Management "Introduction to the Position Classification Standards" 2009. For a description of the employment categories, refer to <http://www.opm.gov/policy-data-oversight/classification-qualifications/classifying-general-schedule-positions/positionclassificationintro.pdf>.

Who are the Civilian Federal Employees in

Alabama - 2013

Federal Workers in Alabama: 40,716

Percentage Who Are Veterans: 32.99%

Non-Federal Workers in Alabama: 2,023,000¹

Percentage Who Are Veterans: 8.35%¹

Five Largest Federal Employers

Army: 18,964



VA: 5,591



Defense: 3,476



NASA: 2,424



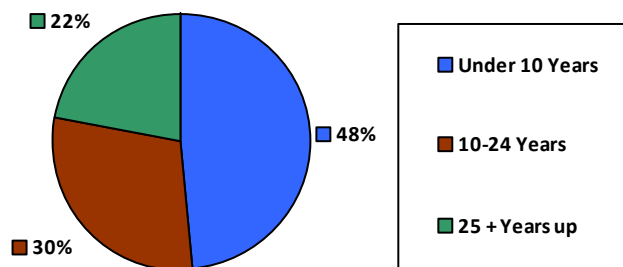
SSA: 2,392



Race and Ethnicity

White, non-Hispanic	26,521	65.1%
Black/African American, non-Hispanic	11,815	29.0%
Hispanic or Latino	920	2.3%
Asian, non-Hispanic	616	1.5%
Two or more races	393	1.0%
American Indian and Alaska Native	389	1.0%
Native Hawaiian and Other Pacific Islander	58	0.1%

Length of Service



Educational Attainment

HS or Below	9,779	24.0%
Occupational Program	1,102	2.7%
Between HS and Bachelors	6,667	16.4%
Bachelors + Post Bachelors	14,802	36.4%
Masters and Post Grad	7,412	18.2%
Doctorate and Post Doc	939	2.3%

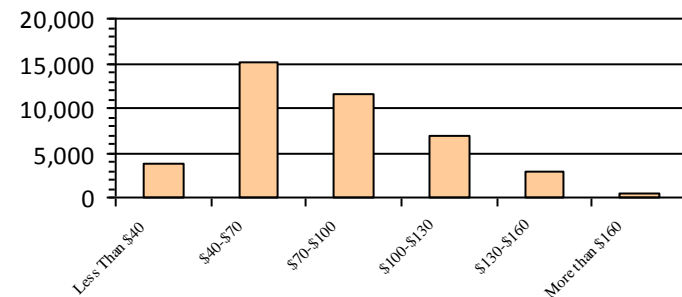
Gender

M	23,647	58.1%
F	17,069	41.9%

Age

<35	6,830	16.8%
35-54	22,562	55.4%
55+	11,324	27.8%

Average Salary (in thousands)



Type of Employment²

Administrative	15,032	36.9%
Professional	12,940	31.8%
Technical	5,935	14.6%
Clerical	1,613	4.0%
Other White Collar	1,264	3.1%
Blue Collar	3,932	9.7%

All data unless otherwise noted is provided by the US Office of Personnel Management for the December 2013 reporting period. ¹Non-Federal Workers Data calculated from the US Bureau of Labor Statistics 2013 Annual Averages https://www.bls.gov/news.release/archives/vet_03202014.pdf. ²Employment categories consistent with the definitions given by the US Office of Personnel Management "Introduction to the Position Classification Standards" 2009. For a description of the employment categories, refer to <http://www.opm.gov/policy-data-oversight/classification-qualifications/classifying-general-schedule-positions/positionclassificationintro.pdf>.