

Who are the Civilian Federal Employees in Tennessee - 2021

Federal Workers in Tennessee: 30,973

Percentage Who Are Veterans: 27.59%

Non-Federal Workers in Tennessee: 3,139,000¹

Percentage Who Are Veterans: 6.94%¹

Five Largest Federal Employers

VA: 12,029



Treasury: 4,473



Army: 3,365



DHS: 1,430



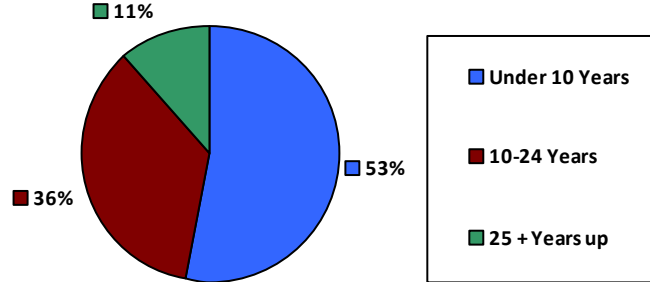
Navy: 1,379



Race and Ethnicity

White, non-Hispanic	18,891	61.0%
Black/African American, non-Hispanic	9,780	31.6%
Hispanic or Latino	823	2.7%
Asian, non-Hispanic	689	2.2%
Two or more races	441	1.4%
American Indian and Alaska Native	247	0.8%
Native Hawaiian and Other Pacific Islander	43	0.1%

Length of Service



Educational Attainment

HS or Below	10,577	34.1%
Occupational Program	834	2.7%
Between HS and Bachelors	4,870	15.7%
Bachelors + Post Bachelors	9,457	30.5%
Masters and Post Grad	4,332	14.0%
Doctorate and Post Doc	869	2.8%

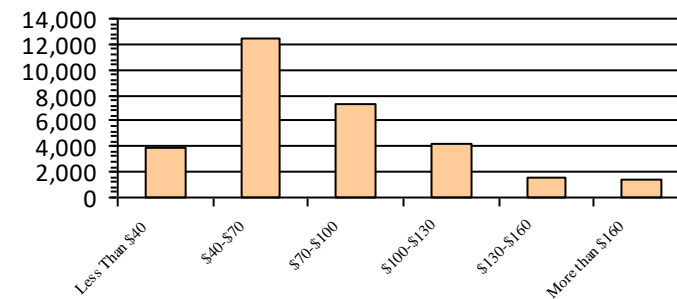
Gender

M	14,195	45.8%
F	16,778	54.2%

Age

<35	5,371	17.3%
35-54	16,646	53.7%
55+	8,956	28.9%

Average Salary (in thousands)



Type of Employment²

Administrative	8,471	27.3%
Professional	8,342	26.9%
Technical	2,302	7.4%
Clerical	600	1.9%
Other White Collar	2,086	6.7%
Blue Collar	2,243	7.2%

All data unless otherwise noted is provided by the US Office of Personnel Management for the December 2015 reporting period. ¹Non-Federal Workers Data calculated from the US Bureau of Labor Statistics 2015 Annual Averages https://www.bls.gov/news.release/archives/vet_03222016.pdf. ²Employment categories consistent with the definitions given by the US Office of Personnel Management "Introduction to the Position Classification Standards" 2009. For a description of the employment categories, refer to <http://www.opm.gov/policy-data-oversight/classification-qualifications/classifying-general-schedule-positions/positionclassificationintro.pdf>.

Who are the Civilian Federal Employees in Tennessee - 2020

Federal Workers in Tennessee: 30,801
Percentage Who Are Veterans: 28.62%

Non-Federal Workers in Tennessee: 3,010,000¹
*Percentage Who Are Veterans: 6.88%*¹

Five Largest Federal Employers

VA: 12,104



Treasury: 4,089



Army: 3,405



Navy: 1,395



DHS: 1,365



Race and Ethnicity

White, non-Hispanic	19,036	61.8%
Black/African American, non-Hispanic	9,575	31.1%
Hispanic or Latino	761	2.5%
Asian, non-Hispanic	686	2.2%
Two or more races	411	1.3%
American Indian and Alaska Native	241	0.8%
Native Hawaiian and Other Pacific Islander	46	0.1%

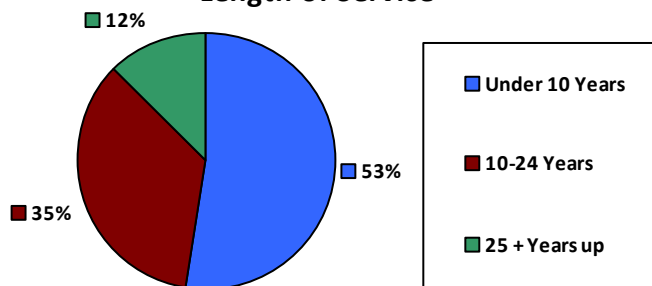
Gender

M	14,323	46.5%
F	16,478	53.5%

Age

<35	5,460	17.7%
35-54	16,345	53.1%
55+	8,996	29.2%

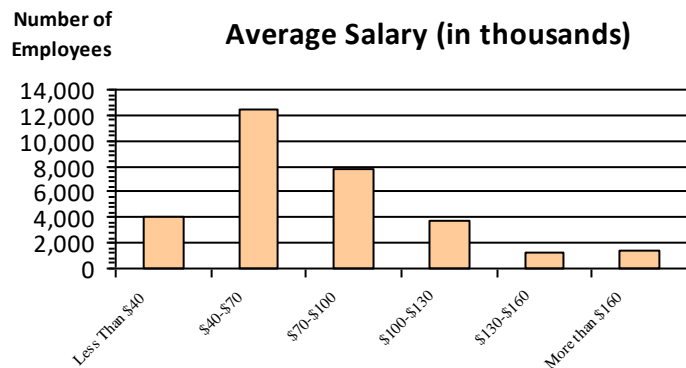
Length of Service



Educational Attainment

HS or Below	10,293	33.4%
Occupational Program	892	2.9%
Between HS and Bachelors	5,136	16.7%
Bachelors + Post Bachelors	9,364	30.4%
Masters and Post Grad	4,248	13.8%
Doctorate and Post Doc	831	2.7%

Average Salary (in thousands)



Type of Employment²

Administrative	9,024	29.3%
Professional	8,317	27.0%
Technical	8,209	26.6%
Clerical	2,336	7.6%
Other White Collar	626	2.0%
Blue Collar	2,243	7.3%

All data unless otherwise noted is provided by the US Office of Personnel Management for the December 2015 reporting period. ¹Non-Federal Workers Data calculated from the US Bureau of Labor Statistics 2015 Annual Averages https://www.bls.gov/news.release/archives/vet_03222016.pdf. ²Employment categories consistent with the definitions given by the US Office of Personnel Management "Introduction to the Position Classification Standards" 2009. For a description of the employment categories, refer to <http://www.opm.gov/policy-data-oversight/classification-qualifications/classifying-general-schedule-positions/positionclassificationintro.pdf>.

Who are the Civilian Federal Employees in Tennessee - 2019

Federal Workers in Tennessee: 29,938

Percentage Who Are Veterans: 28.99%

Non-Federal Workers in Tennessee: 3,221,000¹

Percentage Who Are Veterans: 6.98%¹

Five Largest Federal Employers

VA: 11,846



Treasury: 3,674



Army: 3,260



DHS: 1,415



Navy: 1,333



Race and Ethnicity

White, non-Hispanic	18,598	62.1%
Black/African American, non-Hispanic	9,125	30.5%
Hispanic or Latino	711	2.4%
Asian, non-Hispanic	664	2.2%
Two or more races	371	1.2%
American Indian and Alaska Native	249	0.8%
Native Hawaiian and Other Pacific Islander	48	0.2%

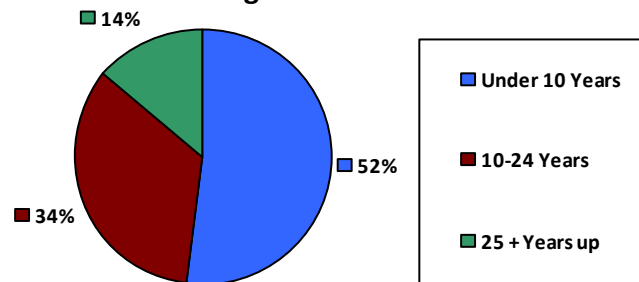
Gender

M	14,144	47.3%
F	15,786	52.7%

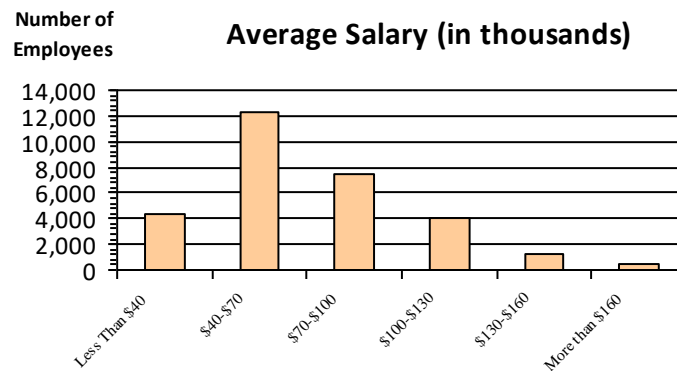
Age

<35	5,089	17.0%
35-54	15,889	53.1%
55+	8,960	29.9%

Length of Service



Average Salary (in thousands)



Educational Attainment

HS or Below	8,942	29.9%
Occupational Program	1,535	5.1%
Between HS and Bachelors	5,322	17.8%
Bachelors + Post Bachelors	9,216	30.8%
Masters and Post Grad	3,948	13.2%
Doctorate and Post Doc	948	3.2%

Type of Employment²

Administrative	8,814	29.4%
Professional	8,083	27.0%
Technical	7,804	26.1%
Clerical	2,371	7.9%
Other White Collar	614	2.1%
Blue Collar	2,204	7.4%

All data unless otherwise noted is provided by the US Office of Personnel Management for the December 2015 reporting period. ¹Non-Federal Workers Data calculated from the US Bureau of Labor Statistics 2015 Annual Averages https://www.bls.gov/news.release/archives/vet_03222016.pdf. ²Employment categories consistent with the definitions given by the US Office of Personnel Management "Introduction to the Position Classification Standards" 2009. For a description of the employment categories, refer to <http://www.opm.gov/policy-data-oversight/classification-qualifications/classifying-general-schedule-positions/positionclassificationintro.pdf>.

Who are the Civilian Federal Employees in

Tennessee - 2018

Federal Workers in Tennessee: 29,285

Percentage Who Are Veterans: 29.40%

Non-Federal Workers in Tennessee: 3,111,000¹

Percentage Who Are Veterans: 8.00%¹

Five Largest Federal Employers

VA: 11,656



Treasury: 3,567



Army: 3,148



DHS: 1,311



Agriculture: 1,272



Race and Ethnicity

White, non-Hispanic	18,356	62.7%
Black/African American, non-Hispanic	8,778	30.0%
Hispanic or Latino	673	2.3%
Asian, non-Hispanic	653	2.2%
Two or more races	369	1.3%
American Indian and Alaska Native	251	0.9%
Native Hawaiian and Other Pacific Islander	46	0.2%

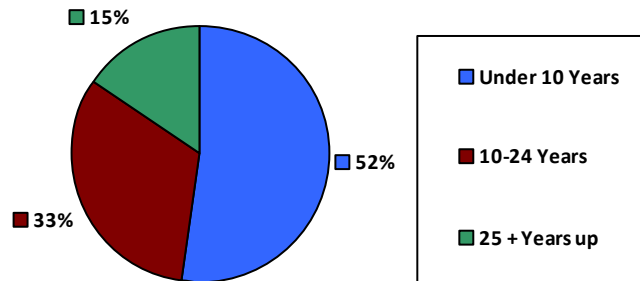
Gender

M	13,926	47.7%
F	15,293	52.3%

Age

<35	4,898	16.7%
35-54	15,631	53.4%
55+	8,756	29.9%

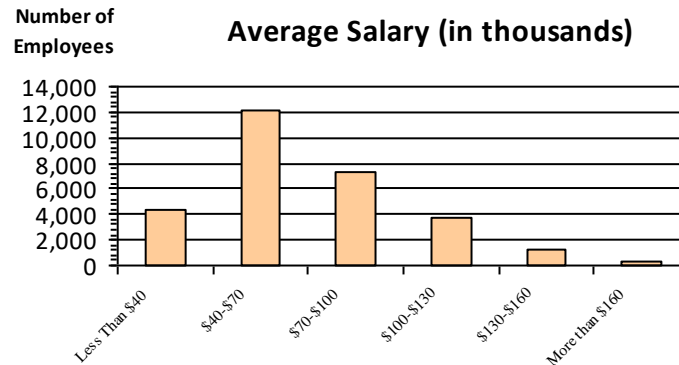
Length of Service



Educational Attainment

HS or Below	8,367	28.6%
Occupational Program	1,560	5.3%
Between HS and Bachelors	5,486	18.7%
Bachelors + Post Bachelors	9,166	31.3%
Masters and Post Grad	3,808	13.0%
Doctorate and Post Doc	860	2.9%

Average Salary (in thousands)



Type of Employment²

Administrative	8,575	29.3%
Professional	7,948	27.1%
Technical	7,786	26.6%
Clerical	2,219	7.6%
Other White Collar	573	2.0%
Blue Collar	2,144	7.3%

All data unless otherwise noted is provided by the US Office of Personnel Management for the December 2018 reporting period. ¹Non-Federal Workers Data calculated from the US Bureau of Labor Statistics 2018 Annual Averages www.bls.gov/news.release/pdf/vet.pdf. ²Employment categories consistent with the definitions given by the US Office of Personnel Management "Introduction to the Position Classification Standards" 2009. For a description of the employment categories, refer to www.opm.gov/policy-data-oversight/classification-qualifications/classifying-general-schedule-positions/positionclassificationintro.pdf.

Who are the Civilian Federal Employees in Tennessee - 2017

Federal Workers in Tennessee: 28,367

Percentage Who Are Veterans: 30.26%

Non-Federal Workers in Tennessee: 3,056,000¹

Percentage Who Are Veterans: 9.03%²

Five Largest Federal Employers

VA: 11,169



Treasury: 3,170



Army: 3,025



Agriculture: 1,281



DHS: 1,247



Race and Ethnicity

White, non-Hispanic	18,286	64.5%
Black/African American, non-Hispanic	8,210	28.9%
Hispanic or Latino	633	2.2%
Asian, non-Hispanic	600	2.1%
Two or more races	330	1.2%
American Indian and Alaska Native	262	0.9%
Native Hawaiian and Other Pacific Islander	42	0.1%

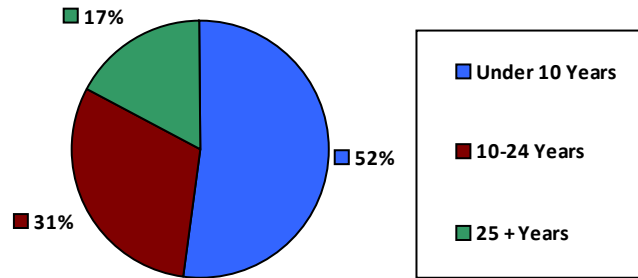
Gender

M	13,876	48.9%
F	14,475	51.1%

Age

<35	4,487	15.8%
35-54	15,279	53.9%
55+	8,601	30.3%

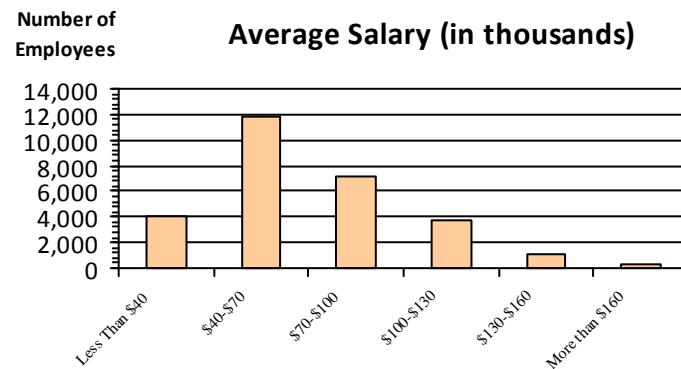
Length of Service



Educational Attainment

HS or Below	7,745	27.3%
Occupational Program	1,550	5.5%
Between HS and Bachelors	5,491	19.4%
Bachelors + Post Bachelors	9,068	32.0%
Masters and Post Grad	3,719	13.1%
Doctorate and Post Doc	766	2.7%

Average Salary (in thousands)



Type of Employment²

Administrative	8,521	30.0%
Professional	7,769	27.4%
Technical	7,213	25.4%
Clerical	2,146	7.6%
Other White Collar	582	2.1%
Blue Collar	2,136	7.5%

All data unless otherwise noted is provided by the US Office of Personnel Management for the December 2017 reporting period. Non-Federal Workers Data calculated from the US Bureau of Labor Statistics 2017 Annual Averages <https://www.bls.gov/news.release/vet.htm>.¹ Employment categories consistent with the definitions given by the US Office of Personnel Management "Introduction to the Position Classification Standards" (Revised: 2009), available at <https://www.opm.gov/policy-data-oversight/classification-qualifications/classifying-general-schedule-positions/positionclassificationintro.pdf>.²

Who are the Civilian Federal Employees in

Tennessee - 2016

Federal Workers in Tennessee: 29,206

Percentage Who Are Veterans: 29.65%

Non-Federal Workers in Tennessee: 2,978,000¹

Percentage Who Are Veterans: 7.99%¹

Five Largest Federal Employers

VA: 11,082



Treasury: 3,761



Army: 3,100



Agriculture: 1,331



Navy: 1,239



Race and Ethnicity

White, non-Hispanic	18,732	64.1%
Black/African American, non-Hispanic	8,637	29.6%
Hispanic or Latino	612	2.1%
Asian, non-Hispanic	592	2.0%
Two or more races	328	1.1%
American Indian and Alaska Native	262	0.9%
Native Hawaiian and Other Pacific Islander	39	0.1%

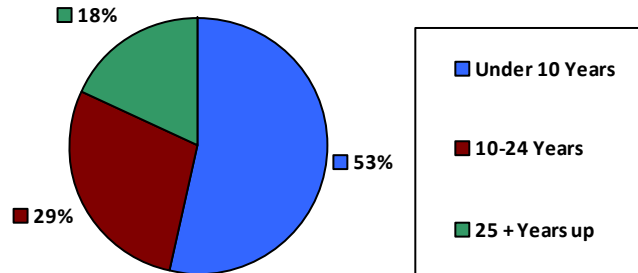
Gender

M	14,114	48.4%
F	15,056	51.6%

Age

<35	4,930	16.9%
35-54	15,742	53.9%
55+	8,534	29.2%

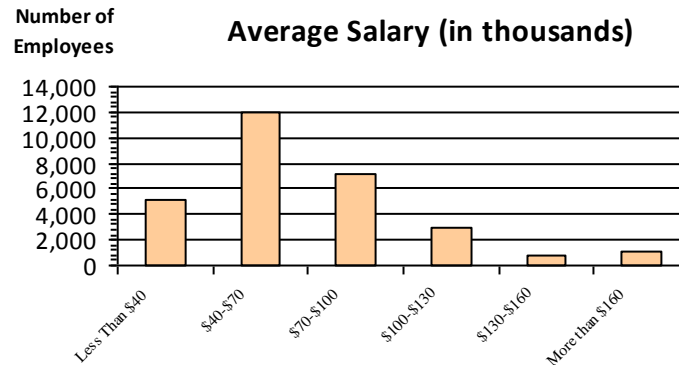
Length of Service



Educational Attainment

HS or Below	8,251	28.2%
Occupational Program	1,583	5.4%
Between HS and Bachelors	5,689	19.5%
Bachelors + Post Bachelors	9,218	31.6%
Masters and Post Grad	3,718	12.7%
Doctorate and Post Doc	728	2.5%

Average Salary (in thousands)



Type of Employment²

Administrative	8,515	29.2%
Professional	7,840	26.8%
Technical	7,773	26.6%
Clerical	2,267	7.8%
Other White Collar	610	2.1%
Blue Collar	2,201	7.5%

All data unless otherwise noted is provided by the US Office of Personnel Management for the December 2016 reporting period. ¹Non-Federal Workers Data calculated from the US Bureau of Labor Statistics 2015 Annual Averages https://www.bls.gov/news.release/archives/vet_03222016.pdf. ²Employment categories consistent with the definitions given by the US Office of Personnel Management "Introduction to the Position Classification Standards" 2009. For a description of the employment categories, refer to <http://www.opm.gov/policy-data-oversight/classification-qualifications/classifying-general-schedule-positions/positionclassificationintro.pdf>.

Who are the Civilian Federal Employees in Tennessee - 2015

Federal Workers in Tennessee: 29,018

Percentage Who Are Veterans: 29.58%

Non-Federal Workers in Tennessee: 2,888,000¹

Percentage Who Are Veterans: 8.10%¹

Five Largest Federal Employers

VA: 10,847



Treasury: 3,652



Army: 3,253



Agriculture: 1,325



Justice: 1,206



Race and Ethnicity

White, non-Hispanic	18,841	64.9%
Black/African American, non-Hispanic	8,394	28.9%
Hispanic or Latino	589	2.0%
Asian, non-Hispanic	575	2.0%
Two or more races	312	1.1%
American Indian and Alaska Native	273	0.9%
Native Hawaiian and Other Pacific Islander	34	0.1%

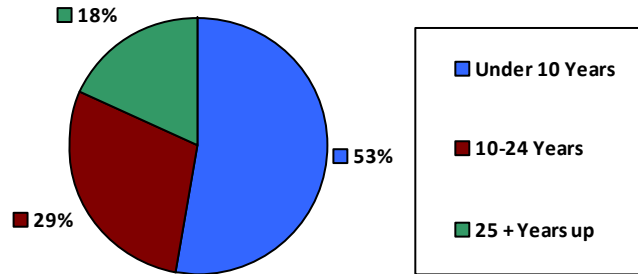
Gender

M	13,965	48.1%
F	15,053	51.9%

Age

<35	4,834	16.7%
35-54	15,815	54.5%
55+	8,369	28.8%

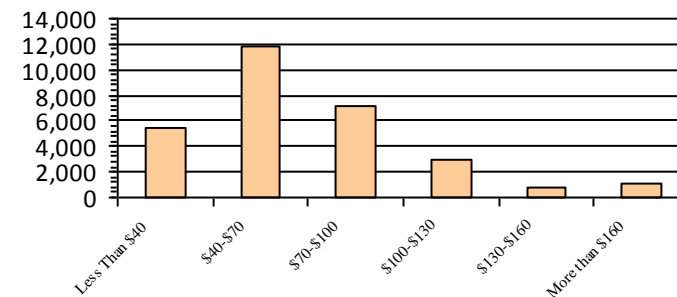
Length of Service



Educational Attainment

HS or Below	8,028	27.7%
Occupational Program	1,663	5.7%
Between HS and Bachelors	5,781	19.9%
Bachelors + Post Bachelors	9,219	31.8%
Masters and Post Grad	3,644	12.5%
Doctorate and Post Doc	670	2.3%

Average Salary (in thousands)



Type of Employment²

Administrative	8,452	29.1%
Professional	7,912	27.3%
Technical	7,788	26.8%
Clerical	2,085	7.2%
Other White Collar	589	2.0%
Blue Collar	2,192	7.6%

All data unless otherwise noted is provided by the US Office of Personnel Management for the December 2015 reporting period. ¹Non-Federal Workers Data calculated from the US Bureau of Labor Statistics 2015 Annual Averages https://www.bls.gov/news.release/archives/vet_03222016.pdf. ²Employment categories consistent with the definitions given by the US Office of Personnel Management "Introduction to the Position Classification Standards" 2009. For a description of the employment categories, refer to <http://www.opm.gov/policy-data-oversight/classification-qualifications/classifying-general-schedule-positions/positionclassificationintro.pdf>.

Who are the Civilian Federal Employees in Tennessee - 2014

Federal Workers in Tennessee: 28,821
Percentage Who Are Veterans: 29.23%

Non-Federal Workers in Tennessee: 2,790,000¹
*Percentage Who Are Veterans: 9.64%*¹

Five Largest Federal Employers

VA: 10,387



Treasury: 3,686



Army: 3,371



Agriculture: 1,389



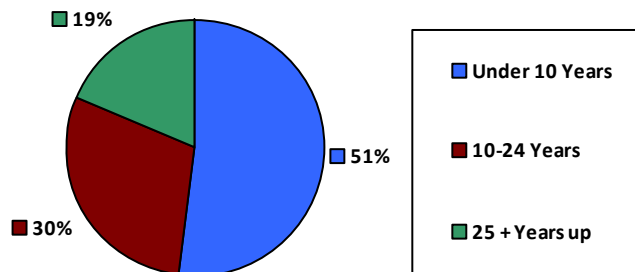
Navy: 1,184



Race and Ethnicity

White, non-Hispanic	18,899	65.6%
Black/African American, non-Hispanic	8,230	28.6%
Hispanic or Latino	567	2.0%
Asian, non-Hispanic	540	1.9%
Two or more races	278	1.0%
American Indian and Alaska Native	278	1.0%
Native Hawaiian and Other Pacific Islander	29	0.1%

Length of Service



Educational Attainment

HS or Below	8,238	28.6%
Occupational Program	1,663	5.8%
Between HS and Bachelors	5,804	20.1%
Bachelors + Post Bachelors	9,008	31.3%
Masters and Post Grad	3,481	12.1%
Doctorate and Post Doc	602	2.1%

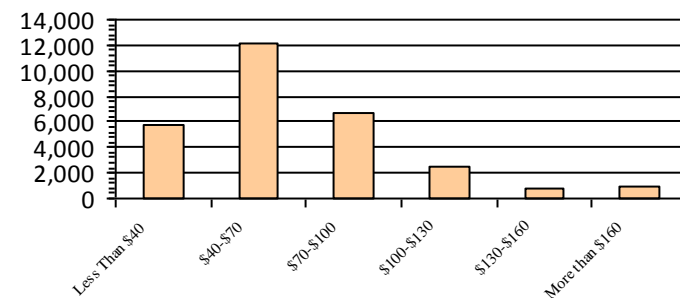
Gender

M	13,866	48.1%
F	14,955	51.9%

Age

<35	4,761	16.5%
35-54	15,774	54.7%
55+	8,286	28.7%

Average Salary (in thousands)



Type of Employment²

Administrative	8,426	29.2%
Professional	7,698	26.7%
Technical	7,880	27.3%
Clerical	2,053	7.1%
Other White Collar	565	2.0%
Blue Collar	2,199	7.6%

All data unless otherwise noted is provided by the US Office of Personnel Management for the December 2014 reporting period. ¹Non-Federal Workers Data calculated from the US Bureau of Labor Statistics 2014 Annual Averages https://www.bls.gov/news.release/archives/vet_03182015.pdf. ²Employment categories consistent with the definitions given by the US Office of Personnel Management "Introduction to the Position Classification Standards" 2009. For a description of the employment categories, refer to <http://www.opm.gov/policy-data-oversight/classification-qualifications/classifying-general-schedule-positions/positionclassificationintro.pdf>.

Who are the Civilian Federal Employees in Tennessee - 2013

Federal Workers in Tennessee: 29,021

Percentage Who Are Veterans: 28.73%

Non-Federal Workers in Tennessee: 2,804,000¹

Percentage Who Are Veterans: 9.06%¹

Five Largest Federal Employers

VA: 10,102



Treasury: 3,737



Army: 3,562



Agriculture: 1,530



DHS: 1,206



Race and Ethnicity

White, non-Hispanic	18,974	65.4%
Black/African American, non-Hispanic	8,367	28.8%
Hispanic or Latino	566	2.0%
Asian, non-Hispanic	536	1.8%
Two or more races	257	0.9%
American Indian and Alaska Native	295	1.0%
Native Hawaiian and Other Pacific Islander	26	0.1%

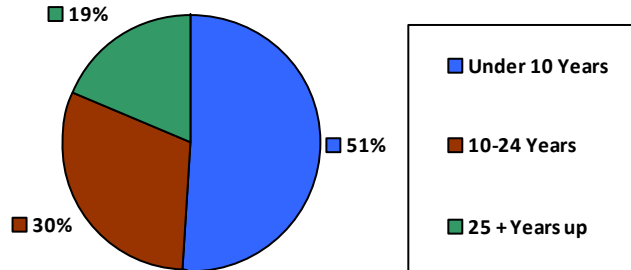
Gender

M	13,971	48.1%
F	15,050	51.9%

Age

<35	4,817	16.6%
35-54	15,936	54.9%
55+	8,268	28.5%

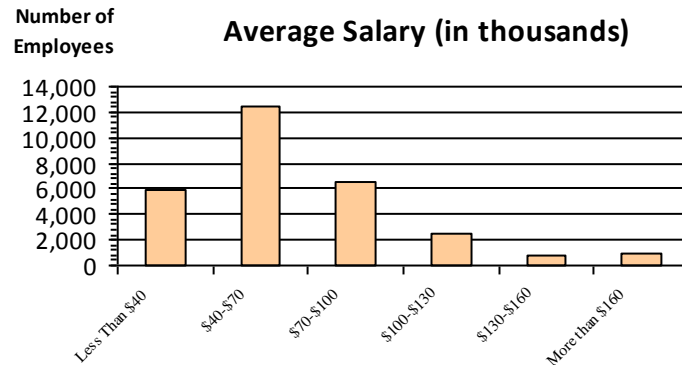
Length of Service



Educational Attainment

HS or Below	8,544	29.4%
Occupational Program	1,643	5.7%
Between HS and Bachelors	5,967	20.6%
Bachelors + Post Bachelors	8,927	30.8%
Masters and Post Grad	3,339	11.5%
Doctorate and Post Doc	581	2.0%

Average Salary (in thousands)



Type of Employment²

Administrative	8,446	29.1%
Professional	7,632	26.3%
Technical	7,792	26.8%
Clerical	2,335	8.0%
Other White Collar	565	1.9%
Blue Collar	2,251	7.8%

All data unless otherwise noted is provided by the US Office of Personnel Management for the December 2013 reporting period. ¹Non-Federal Workers Data calculated from the US Bureau of Labor Statistics 2013 Annual Averages https://www.bls.gov/news.release/archives/vet_03202014.pdf. ²Employment categories consistent with the definitions given by the US Office of Personnel Management "Introduction to the Position Classification Standards" 2009. For a description of the employment categories, refer to <http://www.opm.gov/policy-data-oversight/classification-qualifications/classifying-general-schedule-positions/positionclassificationintro.pdf>.