

# Who are the Civilian Federal Employees in Rhode Island - 2022

**Federal Workers in Rhode Island: 8,608**

*Percentage Who Are Veterans: 22.59%*

**Non-Federal Workers in Rhode Island: 551,000<sup>1</sup>**

*Percentage Who Are Veterans: 4.72%<sup>1</sup>*

## Five Largest Federal Employers

Navy: 4,532



VA: 2,200



DHS: 356



Army: 220



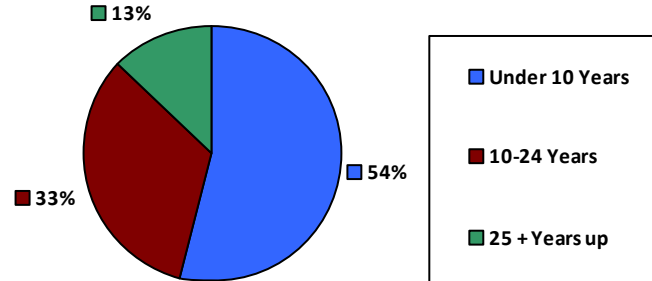
Defense: 211



### Race and Ethnicity

White, non-Hispanic	7,046	81.8%
Black/African American, non-Hispanic	480	5.6%
Hispanic or Latino	540	6.3%
Asian, non-Hispanic	294	3.4%
Two or more races	153	1.8%
American Indian and Alaska Native	44	0.5%
Native Hawaiian and Other Pacific Islander	12	0.1%

### Length of Service



### Educational Attainment

HS or Below	1,599	18.6%
Occupational Program	114	1.3%
Between HS and Bachelors	1,077	12.5%
Bachelors + Post Bachelors	3,409	39.6%
Masters and Post Grad	1,868	21.7%
Doctorate and Post Doc	520	6.0%

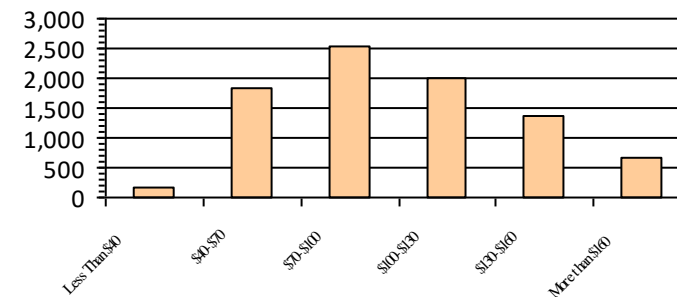
### Gender

M	5,334	62.0%
F	3,274	38.0%

### Age

<35	2,179	25.3%
35-54	3,837	44.6%
55+	2,592	30.1%

### Average Salary (in thousands)



### Type of Employment<sup>2</sup>

Administrative	2,328	27.0%
Professional	4,403	51.1%
Technical	979	11.4%
Clerical	345	4.0%
Other White Collar	135	1.6%
Blue Collar	417	4.8%

All data unless otherwise noted is provided by the US Office of Personnel Management for the December 2022 reporting period. <sup>1</sup>Non-Federal Workers Data calculated from the US Bureau of Labor Statistics 2022 Annual Averages <https://www.bls.gov/news.release/pdf/vet.pdf>. <sup>2</sup>Employment categories consistent with the definitions given by the US Office of Personnel Management "Introduction to the Position Classification Standards" 2009. For a description of the employment categories, refer to <http://www.opm.gov/policy-data-oversight/classification-qualifications/classifying-general-schedule-positions/positionclassificationintro.pdf>.