

Who are the Civilian Federal Employees in Rhode Island - 2021

Federal Workers in Rhode Island: 8,356

Percentage Who Are Veterans: 23.37%

Non-Federal Workers in Rhode Island: 513,000¹

Percentage Who Are Veterans: 5.26%¹

Five Largest Federal Employers

Navy: 4,610



VA: 2,067



DHS: 338



Army: 225



SSA: 142



Race and Ethnicity

| | | |
|--|-------|-------|
| White, non-Hispanic | 6,904 | 82.6% |
| Black/African American, non-Hispanic | 452 | 5.4% |
| Hispanic or Latino | 511 | 6.1% |
| Asian, non-Hispanic | 296 | 3.5% |
| Two or more races | 116 | 1.4% |
| American Indian and Alaska Native | 40 | 0.5% |
| Native Hawaiian and Other Pacific Islander | 11 | 0.1% |

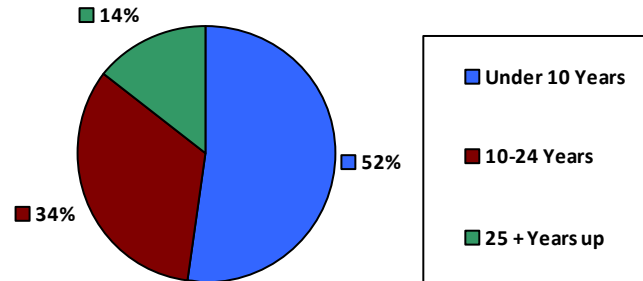
Gender

| | | |
|---|-------|-------|
| M | 5,235 | 62.6% |
| F | 3,121 | 37.3% |

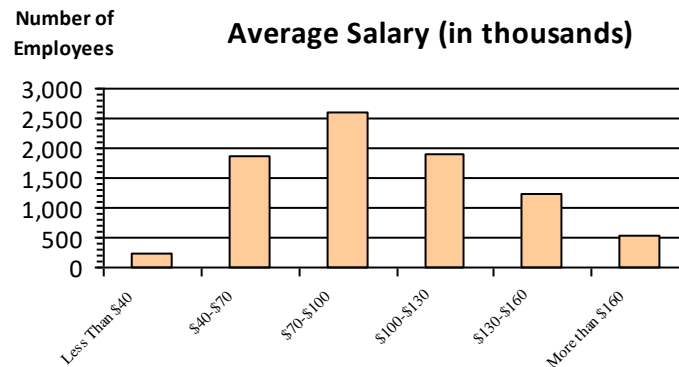
Age

| | | |
|-------|-------|-------|
| <35 | 2,025 | 24.2% |
| 35-54 | 3,694 | 44.2% |
| 55+ | 2,637 | 31.6% |

Length of Service



Average Salary (in thousands)



Educational Attainment

| | | |
|----------------------------|-------|-------|
| HS or Below | 1,559 | 18.7% |
| Occupational Program | 119 | 1.4% |
| Between HS and Bachelors | 1,051 | 12.6% |
| Bachelors + Post Bachelors | 3,340 | 40.0% |
| Masters and Post Grad | 1,781 | 21.3% |
| Doctorate and Post Doc | 488 | 5.8% |

Type of Employment²

| | | |
|--------------------|-------|-------|
| Administrative | 4,325 | 51.8% |
| Professional | 989 | 11.8% |
| Technical | 316 | 3.8% |
| Clerical | 126 | 1.5% |
| Other White Collar | 434 | 5.2% |
| Blue Collar | 449 | 5.4% |

All data unless otherwise noted is provided by the US Office of Personnel Management for the December 2015 reporting period. ¹Non-Federal Workers Data calculated from the US Bureau of Labor Statistics 2015 Annual Averages https://www.bls.gov/news.release/archives/vet_03222016.pdf. ²Employment categories consistent with the definitions given by the US Office of Personnel Management "Introduction to the Position Classification Standards" 2009. For a description of the employment categories, refer to <http://www.opm.gov/policy-data-oversight/classification-qualifications/classifying-general-schedule-positions/positionclassificationintro.pdf>.

Who are the Civilian Federal Employees in Rhode Island - 2020

Federal Workers in Rhode Island: 8,291

Percentage Who Are Veterans: 24.22%

Non-Federal Workers in Rhode Island: 492,000¹

Percentage Who Are Veterans: 4.47%¹

Five Largest Federal Employers

Navy: 4,598



VA: 2,043



DHS: 337



Army: 205



Air Force: 161



Race and Ethnicity

| | | |
|--|-------|-------|
| White, non-Hispanic | 6,922 | 83.5% |
| Black/African American, non-Hispanic | 443 | 5.3% |
| Hispanic or Latino | 470 | 5.7% |
| Asian, non-Hispanic | 287 | 3.5% |
| Two or more races | 98 | 1.2% |
| American Indian and Alaska Native | 44 | 0.5% |
| Native Hawaiian and Other Pacific Islander | 11 | 0.1% |

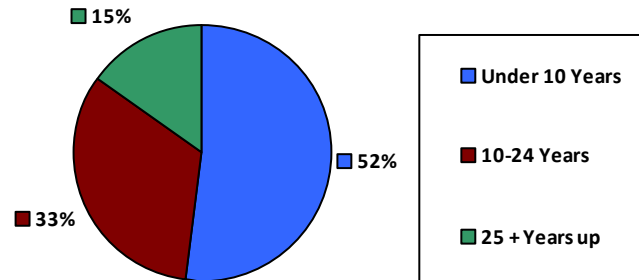
Gender

| | | |
|---|-------|-------|
| M | 5,238 | 63.2% |
| F | 3,053 | 36.8% |

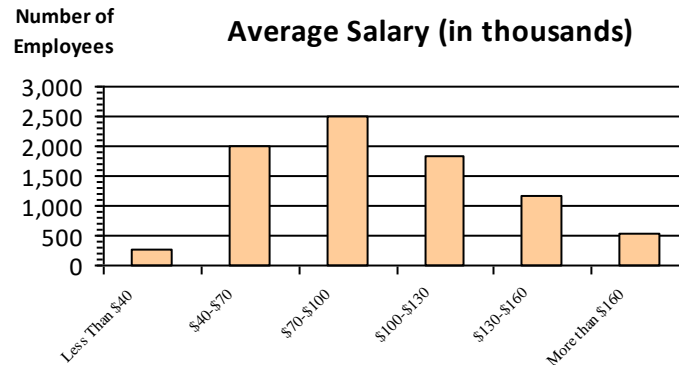
Age

| | | |
|-------|-------|-------|
| <35 | 2,001 | 24.1% |
| 35-54 | 3,626 | 43.7% |
| 55+ | 2,664 | 32.1% |

Length of Service



Average Salary (in thousands)



Educational Attainment

| | | |
|----------------------------|-------|-------|
| HS or Below | 1,542 | 18.6% |
| Occupational Program | 117 | 1.4% |
| Between HS and Bachelors | 1,099 | 13.3% |
| Bachelors + Post Bachelors | 3,275 | 39.5% |
| Masters and Post Grad | 1,771 | 21.3% |
| Doctorate and Post Doc | 475 | 5.7% |

Type of Employment²

| | | |
|--------------------|-------|-------|
| Administrative | 2,136 | 25.8% |
| Professional | 4,242 | 51.2% |
| Technical | 994 | 12.0% |
| Clerical | 334 | 4.0% |
| Other White Collar | 130 | 1.6% |
| Blue Collar | 449 | 5.4% |

All data unless otherwise noted is provided by the US Office of Personnel Management for the December 2015 reporting period. ¹Non-Federal Workers Data calculated from the US Bureau of Labor Statistics 2015 Annual Averages https://www.bls.gov/news.release/archives/vet_03222016.pdf. ²Employment categories consistent with the definitions given by the US Office of Personnel Management "Introduction to the Position Classification Standards" 2009. For a description of the employment categories, refer to <http://www.opm.gov/policy-data-oversight/classification-qualifications/classifying-general-schedule-positions/positionclassificationintro.pdf>.

Who are the Civilian Federal Employees in Rhode Island - 2019

Federal Workers in Rhode Island: 8,281

Percentage Who Are Veterans: 24.55%

Non-Federal Workers in Rhode Island: 526,000¹

Percentage Who Are Veterans: 4.37%¹

Five Largest Federal Employers

Navy: 4,523



VA: 2,011



DHS: 351



Army: 216



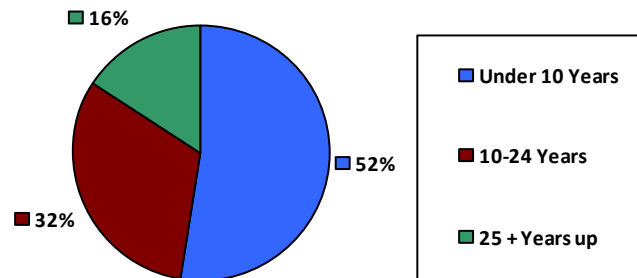
Air Force: 195



Race and Ethnicity

| | | |
|--|-------|-------|
| White, non-Hispanic | 6,006 | 72.5% |
| Black/African American, non-Hispanic | 399 | 4.8% |
| Hispanic or Latino | 432 | 5.2% |
| Asian, non-Hispanic | 229 | 2.8% |
| Two or more races | 86 | 1.0% |
| American Indian and Alaska Native | 34 | 0.4% |
| Native Hawaiian and Other Pacific Islander | 8 | 0.1% |

Length of Service



Educational Attainment

| | | |
|----------------------------|-------|-------|
| HS or Below | 1,491 | 18.0% |
| Occupational Program | 187 | 2.3% |
| Between HS and Bachelors | 1,191 | 14.4% |
| Bachelors + Post Bachelors | 3,157 | 38.1% |
| Masters and Post Grad | 1,722 | 20.8% |
| Doctorate and Post Doc | 517 | 6.2% |

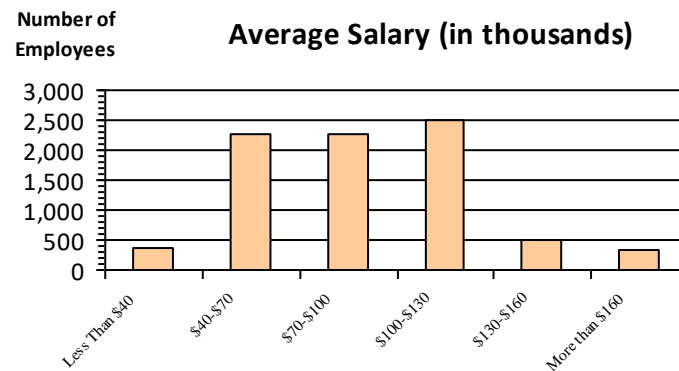
Gender

| | | |
|---|-------|-------|
| M | 5,239 | 63.3% |
| F | 3,041 | 36.7% |

Age

| | | |
|-------|-------|-------|
| <35 | 1,981 | 23.9% |
| 35-54 | 3,647 | 44.0% |
| 55+ | 2,653 | 32.0% |

Average Salary (in thousands)



Type of Employment²

| | | |
|--------------------|-------|-------|
| Administrative | 2,117 | 25.6% |
| Professional | 4,143 | 50.0% |
| Technical | 1,005 | 12.1% |
| Clerical | 380 | 4.6% |
| Other White Collar | 171 | 2.1% |
| Blue Collar | 459 | 5.5% |

All data unless otherwise noted is provided by the US Office of Personnel Management for the December 2015 reporting period. ¹Non-Federal Workers Data calculated from the US Bureau of Labor Statistics 2015 Annual Averages https://www.bls.gov/news.release/archives/vet_03222016.pdf. ²Employment categories consistent with the definitions given by the US Office of Personnel Management "Introduction to the Position Classification Standards" 2009. For a description of the employment categories, refer to <http://www.opm.gov/policy-data-oversight/classification-qualifications/classifying-general-schedule-positions/positionclassificationintro.pdf>.

Who are the Civilian Federal Employees in Rhode Island - 2018

Federal Workers in Rhode Island: 8,056

Percentage Who Are Veterans: 25.10%

Non-Federal Workers in Rhode Island: 528,000¹

*Percentage Who Are Veterans: 4.92%*¹

Five Largest Federal Employers

Navy: 4,341



VA: 1,951



DHS: 351



Army: 231



Air Force: 213



Race and Ethnicity

| | | |
|--|-------|-------|
| White, non-Hispanic | 5,772 | 71.6% |
| Black/African American, non-Hispanic | 380 | 4.7% |
| Hispanic or Latino | 395 | 4.9% |
| Asian, non-Hispanic | 212 | 2.6% |
| Two or more races | 74 | 0.9% |
| American Indian and Alaska Native | 34 | 0.4% |
| Native Hawaiian and Other Pacific Islander | 10 | 0.1% |

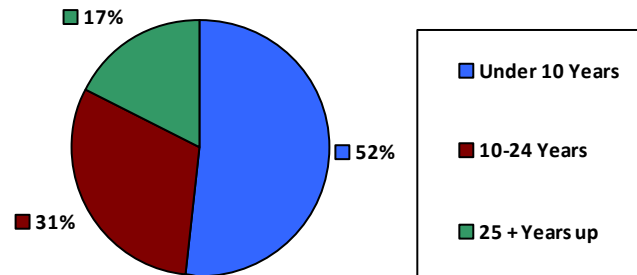
Gender

| | | |
|---|-------|-------|
| M | 5,145 | 63.9% |
| F | 2,909 | 36.1% |

Age

| | | |
|-------|-------|-------|
| <35 | 1,837 | 22.8% |
| 35-54 | 3,645 | 45.2% |
| 55+ | 2,574 | 31.9% |

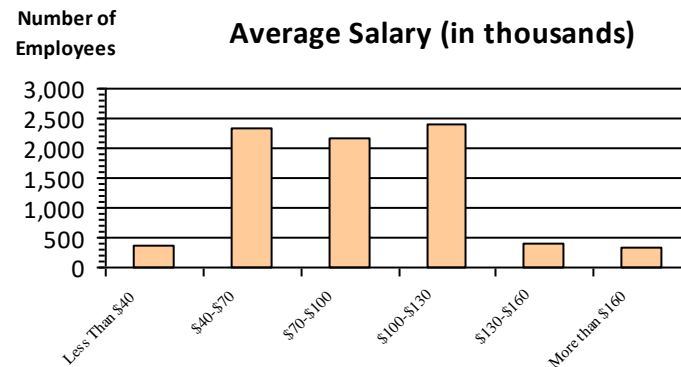
Length of Service



Educational Attainment

| | | |
|----------------------------|-------|-------|
| HS or Below | 1,474 | 18.3% |
| Occupational Program | 192 | 2.4% |
| Between HS and Bachelors | 1,193 | 14.8% |
| Bachelors + Post Bachelors | 3,023 | 37.5% |
| Masters and Post Grad | 1,645 | 20.4% |
| Doctorate and Post Doc | 513 | 6.4% |

Average Salary (in thousands)



Type of Employment²

| | | |
|--------------------|-------|-------|
| Administrative | 2,023 | 25.1% |
| Professional | 4,006 | 49.7% |
| Technical | 1,011 | 12.5% |
| Clerical | 369 | 4.6% |
| Other White Collar | 158 | 2.0% |
| Blue Collar | 483 | 6.0% |

All data unless otherwise noted is provided by the US Office of Personnel Management for the December 2018 reporting period. ¹Non-Federal Workers Data calculated from the US Bureau of Labor Statistics 2018 Annual Averages www.bls.gov/news.release/pdf/vet.pdf. ²Employment categories consistent with the definitions given by the US Office of Personnel Management "Introduction to the Position Classification Standards" 2009. For a description of the employment categories, refer to www.opm.gov/policy-data-oversight/classification-qualifications/classifying-general-schedule-positions/positionclassificationintro.pdf.

Who are the Civilian Federal Employees in Rhode Island - 2017

Federal Workers in Rhode Island: 7,922

Percentage Who Are Veterans: 25.43%

Non-Federal Workers in Rhode Island: 523,000¹

Percentage Who Are Veterans: 5.87%²

Five Largest Federal Employers

Navy: 4,227



VA: 1,925



DHS: 353



Air Force: 216



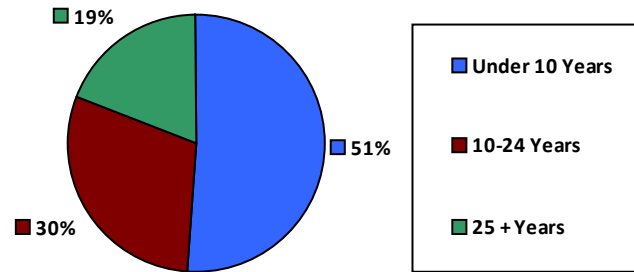
Army: 191



Race and Ethnicity

| | | |
|--|-------|-------|
| White, non-Hispanic | 6,784 | 85.6% |
| Black/African American, non-Hispanic | 414 | 5.2% |
| Hispanic or Latino | 397 | 5.0% |
| Asian, non-Hispanic | 222 | 2.8% |
| Two or more races | 66 | 0.8% |
| American Indian and Alaska Native | 28 | 0.4% |
| Native Hawaiian and Other Pacific Islander | 10 | 0.1% |

Length of Service



Educational Attainment

| | | |
|----------------------------|-------|-------|
| HS or Below | 1,462 | 18.5% |
| Occupational Program | 202 | 2.5% |
| Between HS and Bachelors | 1,177 | 14.9% |
| Bachelors + Post Bachelors | 2,988 | 37.7% |
| Masters and Post Grad | 1,588 | 20.0% |
| Doctorate and Post Doc | 488 | 6.2% |

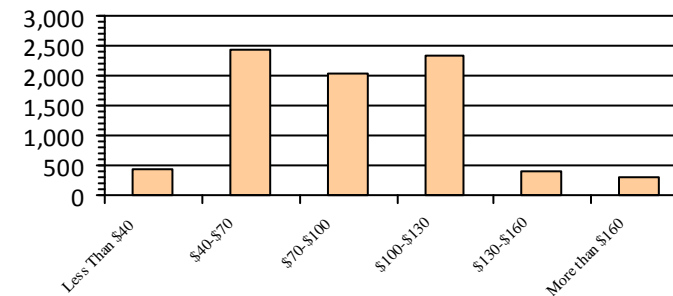
Gender

| | | |
|---|-------|-------|
| M | 5,052 | 63.8% |
| F | 2,869 | 36.2% |

Age

| | | |
|-------|-------|-------|
| <35 | 1,733 | 21.9% |
| 35-54 | 3,690 | 46.6% |
| 55+ | 2,499 | 31.5% |

Average Salary (in thousands)



Type of Employment²

| | | |
|--------------------|-------|-------|
| Administrative | 1,968 | 24.8% |
| Professional | 3,980 | 50.2% |
| Technical | 1,003 | 12.7% |
| Clerical | 366 | 4.6% |
| Other White Collar | 167 | 2.1% |
| Blue Collar | 437 | 5.5% |

All data unless otherwise noted is provided by the US Office of Personnel Management for the December 2017 reporting period. Non-Federal Workers Data calculated from the US Bureau of Labor Statistics 2017 Annual Averages <https://www.bls.gov/news.release/vet.htm>.¹ Employment categories consistent with the definitions given by the US Office of Personnel Management "Introduction to the Position Classification Standards" (Revised: 2009), available at <https://www.opm.gov/policy-data-oversight/classification-qualifications/classifying-general-schedule-positions/positionclassificationintro.pdf>.²

Who are the Civilian Federal Employees in Rhode Island - 2016

Federal Workers in Rhode Island: 7,879

Percentage Who Are Veterans: 24.87%

Non-Federal Workers in Rhode Island: 514,000¹

Percentage Who Are Veterans: 5.25%¹

Five Largest Federal Employers

Navy: 4,183



VA: 1,889



DHS: 348



Air Force: 225



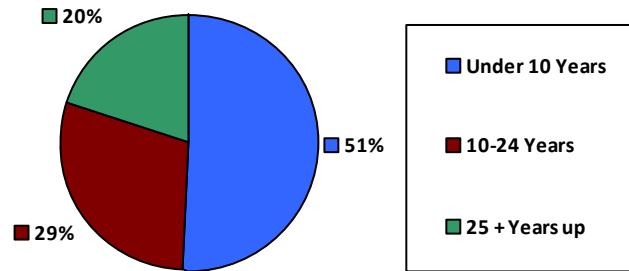
Army: 222



Race and Ethnicity

| | | |
|--|-------|-------|
| White, non-Hispanic | 6,787 | 86.1% |
| Black/African American, non-Hispanic | 416 | 5.3% |
| Hispanic or Latino | 369 | 4.7% |
| Asian, non-Hispanic | 208 | 2.6% |
| Two or more races | 59 | 0.7% |
| American Indian and Alaska Native | 28 | 0.4% |
| Native Hawaiian and Other Pacific Islander | 11 | 0.1% |

Length of Service



Educational Attainment

| | | |
|----------------------------|-------|-------|
| HS or Below | 1,478 | 18.8% |
| Occupational Program | 206 | 2.6% |
| Between HS and Bachelors | 1,198 | 15.2% |
| Bachelors + Post Bachelors | 2,934 | 37.2% |
| Masters and Post Grad | 1,572 | 19.9% |
| Doctorate and Post Doc | 470 | 6.0% |

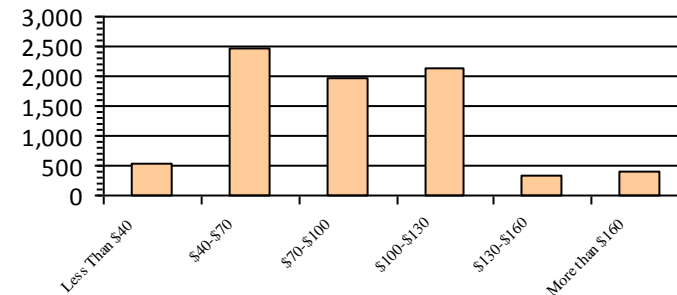
Gender

| | | |
|---|-------|-------|
| M | 5,052 | 64.1% |
| F | 2,823 | 35.8% |

Age

| | | |
|-------|-------|-------|
| <35 | 1,680 | 21.3% |
| 35-54 | 3,772 | 47.9% |
| 55+ | 2,427 | 30.8% |

Average Salary (in thousands)



Type of Employment²

| | | |
|--------------------|-------|-------|
| Administrative | 1,872 | 23.8% |
| Professional | 3,924 | 49.8% |
| Technical | 1,016 | 12.9% |
| Clerical | 416 | 5.3% |
| Other White Collar | 152 | 1.9% |
| Blue Collar | 498 | 6.3% |

All data unless otherwise noted is provided by the US Office of Personnel Management for the December 2016 reporting period. ¹Non-Federal Workers Data calculated from the US Bureau of Labor Statistics 2015 Annual Averages https://www.bls.gov/news.release/archives/vet_03222016.pdf. ²Employment categories consistent with the definitions given by the US Office of Personnel Management "Introduction to the Position Classification Standards" 2009. For a description of the employment categories, refer to <http://www.opm.gov/policy-data-oversight/classification-qualifications/classifying-general-schedule-positions/positionclassificationintro.pdf>.

Who are the Civilian Federal Employees in Rhode Island - 2015

Federal Workers in Rhode Island: 7,685

Percentage Who Are Veterans: 25.48%

Non-Federal Workers in Rhode Island: 520,000¹

Percentage Who Are Veterans: 5.96%¹

Five Largest Federal Employers

Navy: 4,037



VA: 1,826



DHS: 332



Army: 249



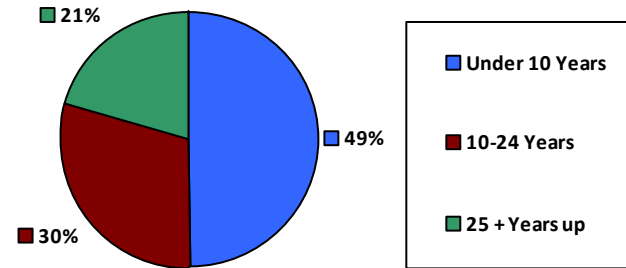
Air Force: 211



Race and Ethnicity

| | | |
|--|-------|-------|
| White, non-Hispanic | 6,654 | 86.6% |
| Black/African American, non-Hispanic | 405 | 5.3% |
| Hispanic or Latino | 347 | 4.5% |
| Asian, non-Hispanic | 202 | 2.6% |
| Two or more races | 41 | 0.5% |
| American Indian and Alaska Native | 24 | 0.3% |
| Native Hawaiian and Other Pacific Islander | 12 | 0.2% |

Length of Service



Educational Attainment

| | | |
|----------------------------|-------|-------|
| HS or Below | 1,485 | 19.3% |
| Occupational Program | 223 | 2.9% |
| Between HS and Bachelors | 1,193 | 15.5% |
| Bachelors + Post Bachelors | 2,791 | 36.3% |
| Masters and Post Grad | 1,520 | 19.8% |
| Doctorate and Post Doc | 450 | 5.9% |

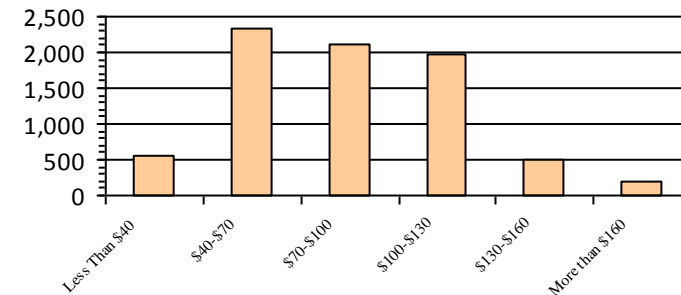
Gender

| | | |
|---|-------|-------|
| M | 4,938 | 64.3% |
| F | 2,744 | 35.7% |

Age

| | | |
|-------|-------|-------|
| <35 | 1,547 | 20.1% |
| 35-54 | 3,820 | 49.7% |
| 55+ | 2,318 | 30.2% |

Average Salary (in thousands)



Type of Employment²

| | | |
|--------------------|-------|-------|
| Administrative | 1,833 | 23.8% |
| Professional | 3,752 | 48.8% |
| Technical | 1,065 | 13.9% |
| Clerical | 379 | 4.9% |
| Other White Collar | 153 | 2.0% |
| Blue Collar | 501 | 6.5% |

All data unless otherwise noted is provided by the US Office of Personnel Management for the December 2015 reporting period. ¹Non-Federal Workers Data calculated from the US Bureau of Labor Statistics 2015 Annual Averages https://www.bls.gov/news.release/archives/vet_03222016.pdf. ²Employment categories consistent with the definitions given by the US Office of Personnel Management "Introduction to the Position Classification Standards" 2009. For a description of the employment categories, refer to <http://www.opm.gov/policy-data-oversight/classification-qualifications/classifying-general-schedule-positions/positionclassificationintro.pdf>.

Who are the Civilian Federal Employees in Rhode Island - 2014

Federal Workers in Rhode Island: 7,402

Percentage Who Are Veterans: 25.26%

Non-Federal Workers in Rhode Island: 503,000 ¹

Percentage Who Are Veterans: 6.36% ¹

Five Largest Federal Employers

Navy: 3,799



VA: 1,744



DHS: 334



Army: 258



Air Force: 206



Race and Ethnicity

| | | |
|--|-------|-------|
| White, non-Hispanic | 6,391 | 86.3% |
| Black/African American, non-Hispanic | 408 | 5.5% |
| Hispanic or Latino | 330 | 4.5% |
| Asian, non-Hispanic | 197 | 2.7% |
| Two or more races | 45 | 0.6% |
| American Indian and Alaska Native | 22 | 0.3% |
| Native Hawaiian and Other Pacific Islander | 9 | 0.1% |

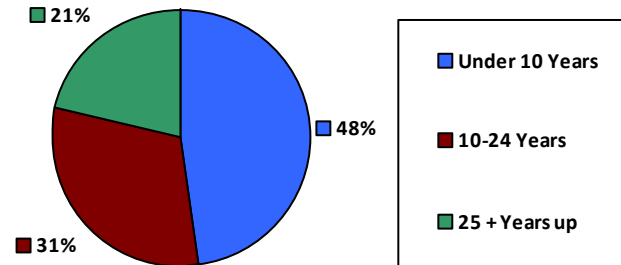
Gender

| | | |
|---|-------|-------|
| M | 4,716 | 63.7% |
| F | 2,686 | 36.3% |

Age

| | | |
|-------|-------|-------|
| <35 | 1,348 | 18.2% |
| 35-54 | 3,848 | 52.0% |
| 55+ | 2,206 | 29.8% |

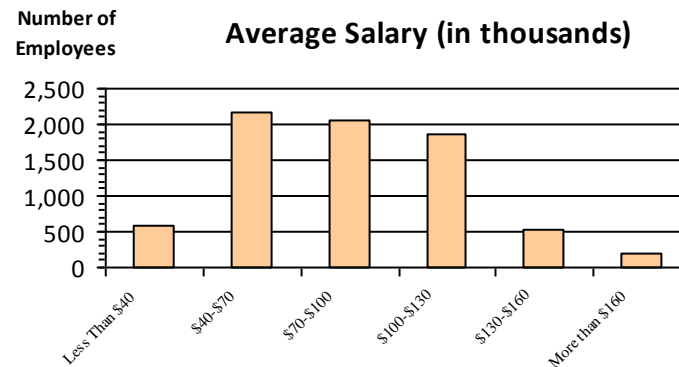
Length of Service



Educational Attainment

| | | |
|----------------------------|-------|-------|
| HS or Below | 1,473 | 19.9% |
| Occupational Program | 227 | 3.1% |
| Between HS and Bachelors | 1,177 | 15.9% |
| Bachelors + Post Bachelors | 2,658 | 35.9% |
| Masters and Post Grad | 1,448 | 19.5% |
| Doctorate and Post Doc | 415 | 5.6% |

Average Salary (in thousands)



Type of Employment ²

| | | |
|--------------------|-------|-------|
| Administrative | 1,798 | 24.3% |
| Professional | 3,539 | 47.8% |
| Technical | 1,076 | 14.5% |
| Clerical | 380 | 5.1% |
| Other White Collar | 118 | 1.6% |
| Blue Collar | 488 | 6.6% |

All data unless otherwise noted is provided by the US Office of Personnel Management for the December 2014 reporting period. ¹Non-Federal Workers Data calculated from the US Bureau of Labor Statistics 2014 Annual Averages https://www.bls.gov/news.release/archives/vet_03182015.pdf. ²Employment categories consistent with the definitions given by the US Office of Personnel Management "Introduction to the Position Classification Standards" 2009. For a description of the employment categories, refer to <http://www.opm.gov/policy-data-oversight/classification-qualifications/classifying-general-schedule-positions/positionclassificationintro.pdf>.

Who are the Civilian Federal Employees in Rhode Island - 2013

Federal Workers in Rhode Island: 7,275

Percentage Who Are Veterans: 24.79%

Non-Federal Workers in Rhode Island: 496,000¹

*Percentage Who Are Veterans: 6.45%*¹

Five Largest Federal Employers

Navy: 3,749



VA: 1,659



DHS: 342



Army: 251



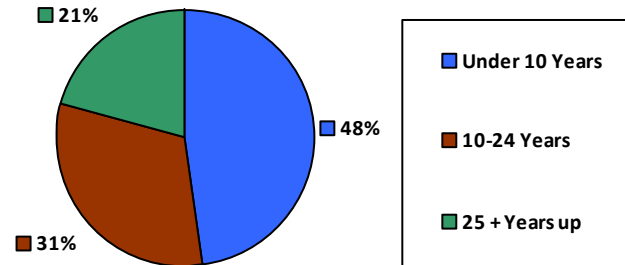
HHS: 212



Race and Ethnicity

| | | |
|--|-------|-------|
| White, non-Hispanic | 6,317 | 86.8% |
| Black/African American, non-Hispanic | 371 | 5.1% |
| Hispanic or Latino | 317 | 4.4% |
| Asian, non-Hispanic | 193 | 2.7% |
| Two or more races | 43 | 0.6% |
| American Indian and Alaska Native | 25 | 0.3% |
| Native Hawaiian and Other Pacific Islander | 8 | 0.1% |

Length of Service



Educational Attainment

| | | |
|----------------------------|-------|-------|
| HS or Below | 1,500 | 20.6% |
| Occupational Program | 224 | 3.1% |
| Between HS and Bachelors | 1,123 | 15.4% |
| Bachelors + Post Bachelors | 2,632 | 36.2% |
| Masters and Post Grad | 1,389 | 19.1% |
| Doctorate and Post Doc | 404 | 5.6% |

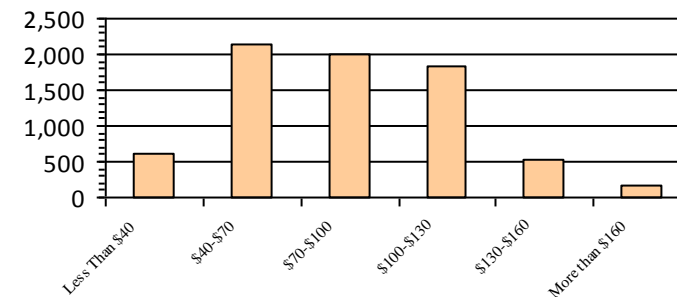
Gender

| | | |
|---|-------|-------|
| M | 4,626 | 63.6% |
| F | 2,649 | 36.4% |

Age

| | | |
|-------|-------|-------|
| <35 | 1,287 | 17.7% |
| 35-54 | 3,887 | 53.4% |
| 55+ | 2,101 | 28.9% |

Average Salary (in thousands)



Type of Employment²

| | | |
|--------------------|-------|-------|
| Administrative | 1,762 | 24.2% |
| Professional | 3,505 | 48.2% |
| Technical | 1,090 | 15.0% |
| Clerical | 369 | 5.1% |
| Other White Collar | 113 | 1.6% |
| Blue Collar | 433 | 6.0% |

All data unless otherwise noted is provided by the US Office of Personnel Management for the December 2013 reporting period. ¹Non-Federal Workers Data calculated from the US Bureau of Labor Statistics 2013 Annual Averages https://www.bls.gov/news.release/archives/vet_03202014.pdf. ²Employment categories consistent with the definitions given by the US Office of Personnel Management "Introduction to the Position Classification Standards" 2009. For a description of the employment categories, refer to <http://www.opm.gov/policy-data-oversight/classification-qualifications/classifying-general-schedule-positions/positionclassificationintro.pdf>.