

Who are the Civilian Federal Employees in Pennsylvania - 2022

Federal Workers in Pennsylvania: 70,917

Percentage Who Are Veterans: 22.31%

Non-Federal Workers in Pennsylvania: 6,076,000¹

Percentage Who Are Veterans: 4.79%¹

Five Largest Federal Employers

VA: 18,492



Defense: 8,231



Navy: 7,788



Army: 7,697



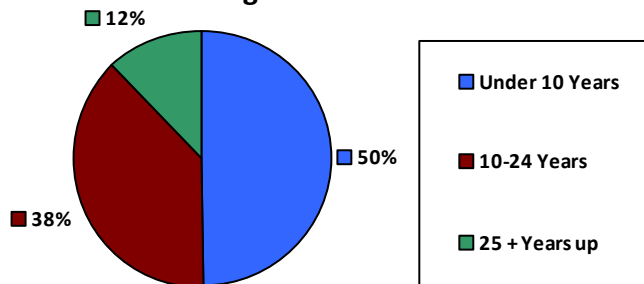
Treasury: 6,429



Race and Ethnicity

White, non-Hispanic	52,526	74.1%
Black/African American, non-Hispanic	11,443	16.1%
Hispanic or Latino	3,220	4.5%
Asian, non-Hispanic	2,382	3.4%
Two or more races	847	1.2%
American Indian and Alaska Native	256	0.4%
Native Hawaiian and Other Pacific Islander	109	0.2%

Length of Service



Educational Attainment

HS or Below	23,522	33.2%
Occupational Program	1,928	2.7%
Between HS and Bachelors	10,751	15.2%
Bachelors + Post Bachelors	23,267	32.8%
Masters and Post Grad	9,653	13.6%
Doctorate and Post Doc	1,739	2.5%

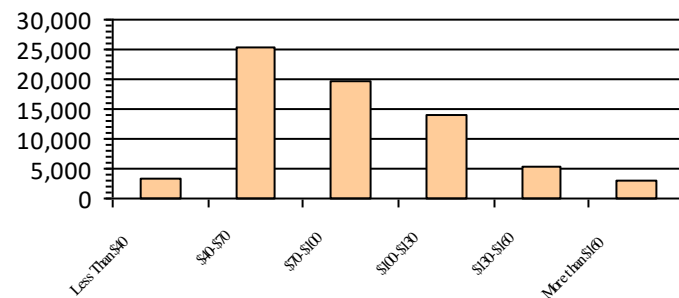
Gender

M	38,020	53.6%
F	32,897	46.4%

Age

<35	13,994	19.7%
35-54	37,644	53.1%
55+	19,279	27.2%

Average Salary (in thousands)



Type of Employment²

Administrative	25,507	36.0%
Professional	17,856	25.2%
Technical	13,883	19.6%
Clerical	3,707	5.2%
Other White Collar	2,588	3.6%
Blue Collar	7,300	10.3%

All data unless otherwise noted is provided by the US Office of Personnel Management for the December 2022 reporting period. ¹Non-Federal Workers Data calculated from the US Bureau of Labor Statistics 2022 Annual Averages <https://www.bls.gov/news.release/pdf/vet.pdf>. ²Employment categories consistent with the definitions given by the US Office of Personnel Management "Introduction to the Position Classification Standards" 2009. For a description of the employment categories, refer to <http://www.opm.gov/policy-data-oversight/classification-qualifications/classifying-general-schedule-positions/positionclassificationintro.pdf>.