

Who are the Civilian Federal Employees in Pennsylvania - 2021

Federal Workers in Pennsylvania: 70,390

Percentage Who Are Veterans: 23.15%

Non-Federal Workers in Pennsylvania: 5,772,000¹

Percentage Who Are Veterans: 4.80%¹

Five Largest Federal Employers

VA: 17,449



Defense: 8,287



Army: 8,242



Navy: 7,766



Treasury: 6,066



Race and Ethnicity

White, non-Hispanic	52,353	74.4%
Black/African American, non-Hispanic	11,296	16.0%
Hispanic or Latino	3,051	4.3%
Asian, non-Hispanic	2,264	3.2%
Two or more races	801	1.1%
American Indian and Alaska Native	222	0.3%
Native Hawaiian and Other Pacific Islander	95	0.1%

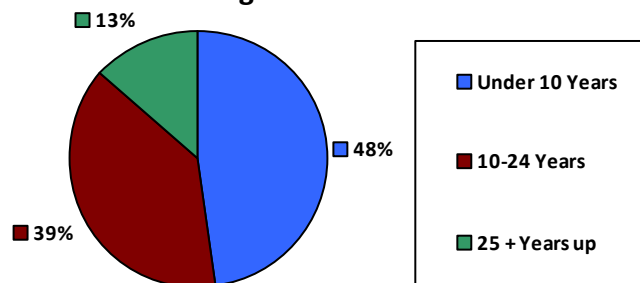
Gender

M	38,526	54.7%
F	31,864	45.3%

Age

<35	14,051	20.0%
35-54	36,869	52.4%
55+	19,470	27.7%

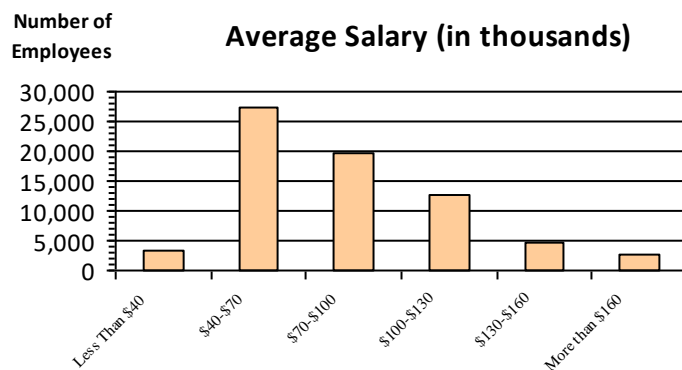
Length of Service



Educational Attainment

HS or Below	23,372	33.2%
Occupational Program	1,873	2.7%
Between HS and Bachelors	11,021	15.7%
Bachelors + Post Bachelors	23,076	32.8%
Masters and Post Grad	9,399	13.3%
Doctorate and Post Doc	1,605	2.3%

Average Salary (in thousands)



Type of Employment²

Administrative	17,227	24.5%
Professional	14,022	19.9%
Technical	3,406	4.8%
Clerical	2,759	3.9%
Other White Collar	7,709	11.0%
Blue Collar	8,109	11.5%

All data unless otherwise noted is provided by the US Office of Personnel Management for the December 2015 reporting period. ¹Non-Federal Workers Data calculated from the US Bureau of Labor Statistics 2015 Annual Averages https://www.bls.gov/news.release/archives/vet_03222016.pdf. ²Employment categories consistent with the definitions given by the US Office of Personnel Management "Introduction to the Position Classification Standards" 2009. For a description of the employment categories, refer to <http://www.opm.gov/policy-data-oversight/classification-qualifications/classifying-general-schedule-positions/positionclassificationintro.pdf>.

Who are the Civilian Federal Employees in Pennsylvania - 2020

Federal Workers in Pennsylvania: 70,430

Percentage Who Are Veterans: 23.95%

Non-Federal Workers in Pennsylvania: 5,715,000¹

Percentage Who Are Veterans: 5.07%¹

Five Largest Federal Employers

VA: 16,907



Defense: 8,527



Army: 8,327



Navy: 7,696



Treasury: 6,084



Race and Ethnicity

White, non-Hispanic	52,507	74.5%
Black/African American, non-Hispanic	11,491	16.3%
Hispanic or Latino	3,023	4.3%
Asian, non-Hispanic	2,160	3.1%
Two or more races	768	1.1%
American Indian and Alaska Native	223	0.3%
Native Hawaiian and Other Pacific Islander	90	0.1%

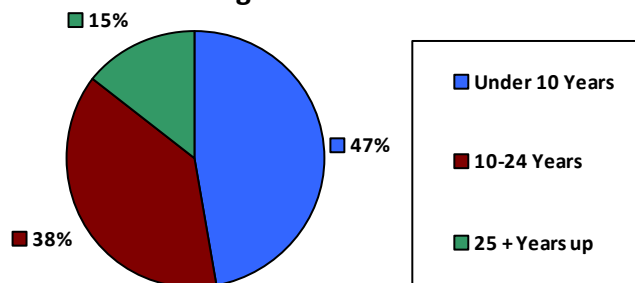
Gender

M	38,802	55.1%
F	31,627	44.9%

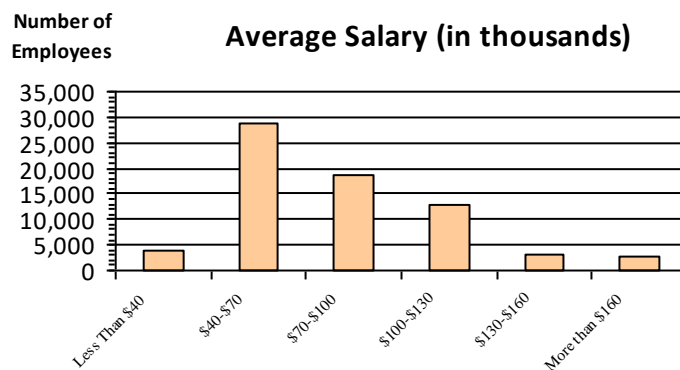
Age

<35	14,452	20.5%
35-54	36,267	51.5%
55+	19,711	28.0%

Length of Service



Average Salary (in thousands)



Educational Attainment

HS or Below	23,703	33.7%
Occupational Program	1,871	2.7%
Between HS and Bachelors	11,275	16.0%
Bachelors + Post Bachelors	22,906	32.5%
Masters and Post Grad	9,079	12.9%
Doctorate and Post Doc	1,542	2.2%

Type of Employment²

Administrative	25,065	35.6%
Professional	16,652	23.6%
Technical	14,173	20.1%
Clerical	3,537	5.0%
Other White Collar	2,826	4.0%
Blue Collar	8,109	11.5%

All data unless otherwise noted is provided by the US Office of Personnel Management for the December 2015 reporting period. ¹Non-Federal Workers Data calculated from the US Bureau of Labor Statistics 2015 Annual Averages https://www.bls.gov/news.release/archives/vet_03222016.pdf. ²Employment categories consistent with the definitions given by the US Office of Personnel Management "Introduction to the Position Classification Standards" 2009. For a description of the employment categories, refer to <http://www.opm.gov/policy-data-oversight/classification-qualifications/classifying-general-schedule-positions/positionclassificationintro.pdf>.

Who are the Civilian Federal Employees in Pennsylvania - 2019

Federal Workers in Pennsylvania: 70,046

Percentage Who Are Veterans: 24.40%

Non-Federal Workers in Pennsylvania: 6,138,000 ¹

Percentage Who Are Veterans: 5.52% ¹

Five Largest Federal Employers

VA: 16,564



Defense: 8,658



Army: 8,602



Navy: 7,533



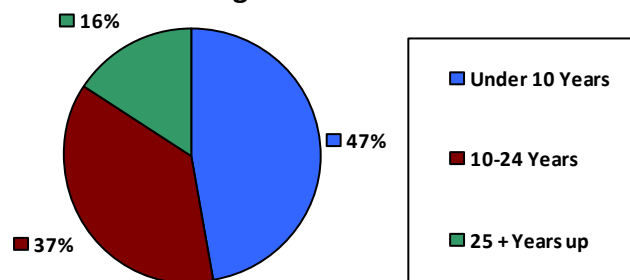
Treasury: 5,829



Race and Ethnicity

White, non-Hispanic	51,899	74.1%
Black/African American, non-Hispanic	11,298	16.1%
Hispanic or Latino	2,920	4.2%
Asian, non-Hispanic	2,020	2.9%
Two or more races	721	1.0%
American Indian and Alaska Native	226	0.3%
Native Hawaiian and Other Pacific Islander	88	0.1%

Length of Service



Educational Attainment

HS or Below	22,429	32.0%
Occupational Program	2,802	4.0%
Between HS and Bachelors	11,930	17.0%
Bachelors + Post Bachelors	22,595	32.3%
Masters and Post Grad	8,559	12.2%
Doctorate and Post Doc	1,668	2.4%

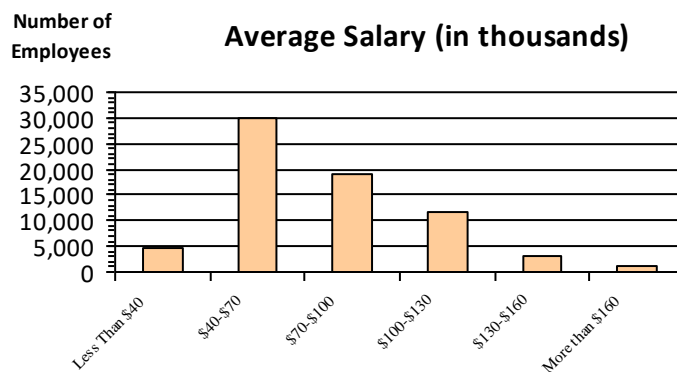
Gender

M	38,862	55.5%
F	31,184	44.5%

Age

<35	14,416	20.6%
35-54	35,769	51.1%
55+	19,861	28.4%

Average Salary (in thousands)



Type of Employment ²

Administrative	24,688	35.2%
Professional	16,352	23.3%
Technical	13,954	19.9%
Clerical	3,690	5.3%
Other White Collar	2,812	4.0%
Blue Collar	8,479	12.1%

All data unless otherwise noted is provided by the US Office of Personnel Management for the December 2015 reporting period. ¹Non-Federal Workers Data calculated from the US Bureau of Labor Statistics 2015 Annual Averages https://www.bls.gov/news.release/archives/vet_03222016.pdf. ²Employment categories consistent with the definitions given by the US Office of Personnel Management "Introduction to the Position Classification Standards" 2009. For a description of the employment categories, refer to <http://www.opm.gov/policy-data-oversight/classification-qualifications/classifying-general-schedule-positions/positionclassificationintro.pdf>.

Who are the Civilian Federal Employees in Pennsylvania - 2018

Federal Workers in Pennsylvania: 68,656

Percentage Who Are Veterans: 24.85%

Non-Federal Workers in Pennsylvania: 6,032,000¹

Percentage Who Are Veterans: 5.59%¹

Five Largest Federal Employers

VA: 16,046



Army: 8,456



Defense: 8,030



Navy: 7,094



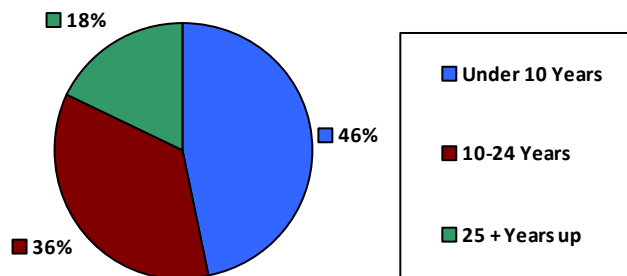
Treasury: 5,856



Race and Ethnicity

White, non-Hispanic	50,967	74.2%
Black/African American, non-Hispanic	11,065	16.1%
Hispanic or Latino	2,739	4.0%
Asian, non-Hispanic	1,908	2.8%
Two or more races	682	1.0%
American Indian and Alaska Native	231	0.3%
Native Hawaiian and Other Pacific Islander	88	0.1%

Length of Service



Educational Attainment

HS or Below	21,448	31.2%
Occupational Program	2,862	4.2%
Between HS and Bachelors	12,113	17.6%
Bachelors + Post Bachelors	22,312	32.5%
Masters and Post Grad	8,287	12.1%
Doctorate and Post Doc	1,567	2.3%

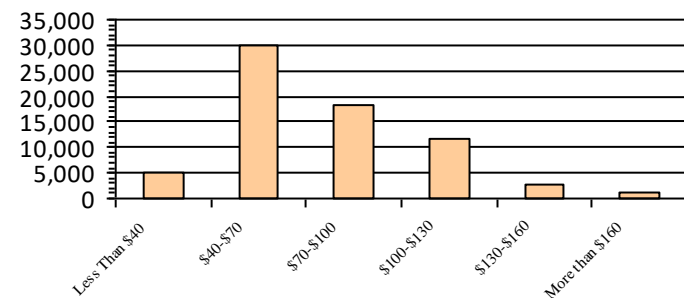
Gender

M	38,160	55.6%
F	30,464	44.4%

Age

<35	13,839	20.2%
35-54	35,159	51.2%
55+	19,658	28.6%

Average Salary (in thousands)



Type of Employment²

Administrative	23,940	34.9%
Professional	15,960	23.2%
Technical	13,882	20.2%
Clerical	3,556	5.2%
Other White Collar	2,703	3.9%
Blue Collar	8,544	12.4%

All data unless otherwise noted is provided by the US Office of Personnel Management for the December 2018 reporting period. ¹Non-Federal Workers Data calculated from the US Bureau of Labor Statistics 2018 Annual Averages www.bls.gov/news.release/pdf/vet.pdf. ²Employment categories consistent with the definitions given by the US Office of Personnel Management "Introduction to the Position Classification Standards" 2009. For a description of the employment categories, refer to www.opm.gov/policy-data-oversight/classification-qualifications/classifying-general-schedule-positions/positionclassificationintro.pdf.

Who are the Civilian Federal Employees in Pennsylvania - 2017

Federal Workers in Pennsylvania: 67,447

Percentage Who Are Veterans: 25.25%

Non-Federal Workers in Pennsylvania: 5,978,000¹

*Percentage Who Are Veterans: 6.46%*²

Five Largest Federal Employers

VA: 15,768



Army: 8,207



Defense: 7,988



Navy: 6,633



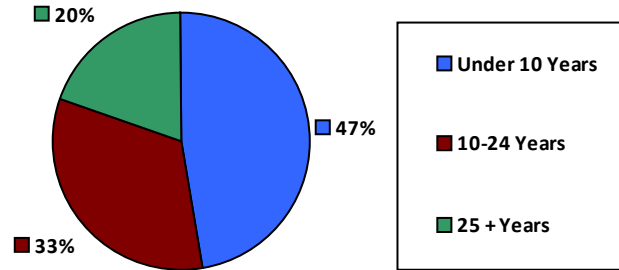
Treasury: 5,221



Race and Ethnicity

White, non-Hispanic	51,397	76.2%
Black/African American, non-Hispanic	10,666	15.8%
Hispanic or Latino	2,596	3.8%
Asian, non-Hispanic	1,851	2.7%
Two or more races	617	0.9%
American Indian and Alaska Native	229	0.3%
Native Hawaiian and Other Pacific Islander	79	0.1%

Length of Service



Educational Attainment

HS or Below	20,754	30.8%
Occupational Program	2,945	4.4%
Between HS and Bachelors	12,068	17.9%
Bachelors + Post Bachelors	22,020	32.6%
Masters and Post Grad	8,092	12.0%
Doctorate and Post Doc	1,494	2.2%

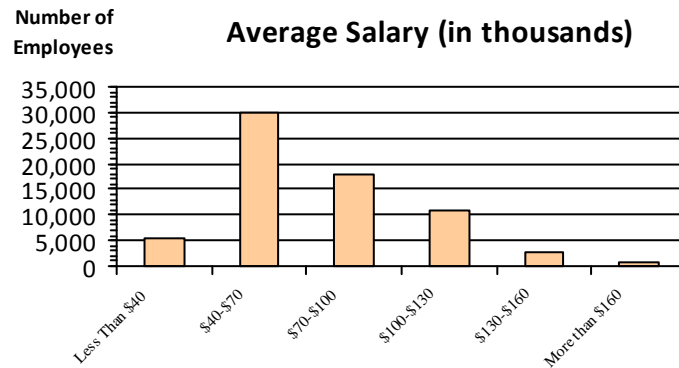
Gender

M	37,641	55.8%
F	29,787	44.2%

Age

<35	13,283	19.7%
35-54	34,815	51.6%
55+	19,349	28.7%

Average Salary (in thousands)



Type of Employment²

Administrative	23,774	35.2%
Professional	15,889	23.6%
Technical	13,261	19.7%
Clerical	3,424	5.1%
Other White Collar	2,866	4.2%
Blue Collar	8,229	12.2%

All data unless otherwise noted is provided by the US Office of Personnel Management for the December 2017 reporting period. Non-Federal Workers Data calculated from the US Bureau of Labor Statistics 2017 Annual Averages <https://www.bls.gov/news.release/vet.htm>.¹ Employment categories consistent with the definitions given by the US Office of Personnel Management "Introduction to the Position Classification Standards" (Revised: 2009), available at <https://www.opm.gov/policy-data-oversight/classification-qualifications/classifying-general-schedule-positions/positionclassificationintro.pdf>.²

Who are the Civilian Federal Employees in Pennsylvania - 2016

Federal Workers in Pennsylvania: 68,409

Percentage Who Are Veterans: 25.11%

Non-Federal Workers in Pennsylvania: 6,049,000¹

Percentage Who Are Veterans: 6.61%¹

Five Largest Federal Employers

VA: 15,433



Army: 8,197



Defense: 8,090



Navy: 6,465



Treasury: 6,181



Race and Ethnicity

White, non-Hispanic	52,252	76.4%
Black/African American, non-Hispanic	10,951	16.0%
Hispanic or Latino	2,488	3.6%
Asian, non-Hispanic	1,802	2.6%
Two or more races	592	0.9%
American Indian and Alaska Native	221	0.3%
Native Hawaiian and Other Pacific Islander	78	0.1%

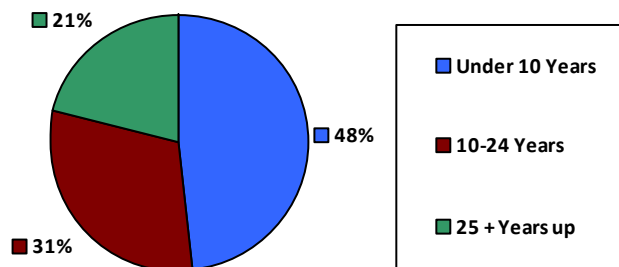
Gender

M	38,144	55.8%
F	30,250	44.2%

Age

<35	13,856	20.3%
35-54	35,082	51.3%
55+	19,471	28.5%

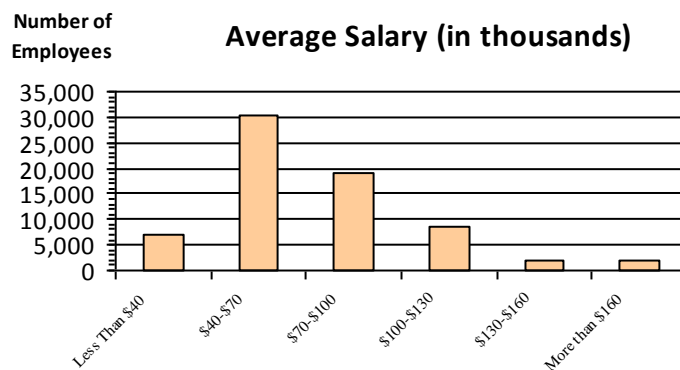
Length of Service



Educational Attainment

HS or Below	21,915	32.0%
Occupational Program	3,163	4.6%
Between HS and Bachelors	12,155	17.8%
Bachelors + Post Bachelors	21,872	32.0%
Masters and Post Grad	7,866	11.5%
Doctorate and Post Doc	1,370	2.0%

Average Salary (in thousands)



Type of Employment²

Administrative	23,810	34.8%
Professional	15,541	22.7%
Technical	14,197	20.8%
Clerical	3,549	5.2%
Other White Collar	2,978	4.4%
Blue Collar	8,329	12.2%

All data unless otherwise noted is provided by the US Office of Personnel Management for the December 2016 reporting period. ¹Non-Federal Workers Data calculated from the US Bureau of Labor Statistics 2015 Annual Averages https://www.bls.gov/news.release/archives/vet_03222016.pdf. ²Employment categories consistent with the definitions given by the US Office of Personnel Management "Introduction to the Position Classification Standards" 2009. For a description of the employment categories, refer to <http://www.opm.gov/policy-data-oversight/classification-qualifications/classifying-general-schedule-positions/positionclassificationintro.pdf>.

Who are the Civilian Federal Employees in Pennsylvania - 2015

Federal Workers in Pennsylvania: 67,422

Percentage Who Are Veterans: 24.98%

Non-Federal Workers in Pennsylvania: 6,004,000¹

Percentage Who Are Veterans: 6.54%¹

Five Largest Federal Employers

VA: 14,995



Army: 8,177



Defense: 8,002



Navy: 6,137



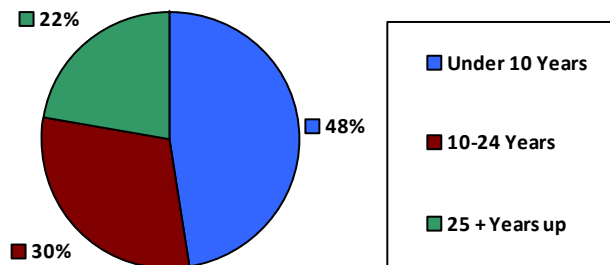
Treasury: 6,125



Race and Ethnicity

White, non-Hispanic	51,848	76.9%
Black/African American, non-Hispanic	10,696	15.9%
Hispanic or Latino	2,348	3.5%
Asian, non-Hispanic	1,709	2.5%
Two or more races	520	0.8%
American Indian and Alaska Native	235	0.3%
Native Hawaiian and Other Pacific Islander	64	0.1%

Length of Service



Educational Attainment

HS or Below	21,733	32.2%
Occupational Program	3,272	4.9%
Between HS and Bachelors	11,992	17.8%
Bachelors + Post Bachelors	21,659	32.1%
Masters and Post Grad	7,460	11.1%
Doctorate and Post Doc	1,234	1.8%

Gender

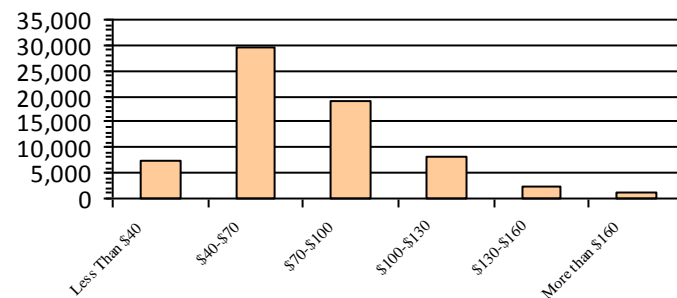
M	37,524	55.7%
F	29,896	44.3%

Age

<35	13,366	19.8%
35-54	34,781	51.6%
55+	19,275	28.6%

Number of Employees

Average Salary (in thousands)



Type of Employment²

Administrative	23,592	35.0%
Professional	15,093	22.4%
Technical	14,165	21.0%
Clerical	3,372	5.0%
Other White Collar	2,853	4.2%
Blue Collar	8,341	12.4%

All data unless otherwise noted is provided by the US Office of Personnel Management for the December 2015 reporting period. ¹Non-Federal Workers Data calculated from the US Bureau of Labor Statistics 2015 Annual Averages https://www.bls.gov/news.release/archives/vet_03222016.pdf. ²Employment categories consistent with the definitions given by the US Office of Personnel Management "Introduction to the Position Classification Standards" 2009. For a description of the employment categories, refer to <http://www.opm.gov/policy-data-oversight/classification-qualifications/classifying-general-schedule-positions/positionclassificationintro.pdf>.

Who are the Civilian Federal Employees in Pennsylvania - 2014

Federal Workers in Pennsylvania: 66,719

Percentage Who Are Veterans: 25.04%

Non-Federal Workers in Pennsylvania: 5,931,000¹

Percentage Who Are Veterans: 6.57%¹

Five Largest Federal Employers

VA: 14,939



Army: 8,325



Defense: 7,918



Navy: 5,858



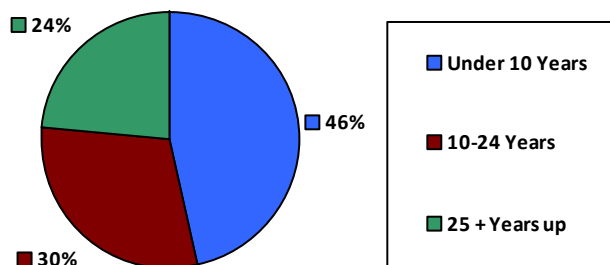
Treasury: 5,727



Race and Ethnicity

White, non-Hispanic	51,891	77.8%
Black/African American, non-Hispanic	10,279	15.4%
Hispanic or Latino	2,207	3.3%
Asian, non-Hispanic	1,605	2.4%
Two or more races	436	0.7%
American Indian and Alaska Native	238	0.4%
Native Hawaiian and Other Pacific Islander	62	0.1%

Length of Service



Educational Attainment

HS or Below	21,623	32.4%
Occupational Program	3,330	5.0%
Between HS and Bachelors	12,072	18.1%
Bachelors + Post Bachelors	21,342	32.0%
Masters and Post Grad	7,072	10.6%
Doctorate and Post Doc	1,161	1.7%

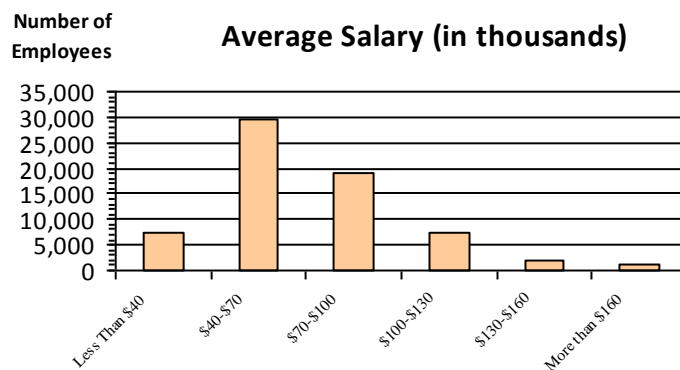
Gender

M	37,188	55.7%
F	29,531	44.3%

Age

<35	12,939	19.4%
35-54	34,742	52.1%
55+	19,038	28.5%

Average Salary (in thousands)



Type of Employment²

Administrative	23,567	35.3%
Professional	14,747	22.1%
Technical	14,069	21.1%
Clerical	3,102	4.6%
Other White Collar	2,749	4.1%
Blue Collar	8,481	12.7%

All data unless otherwise noted is provided by the US Office of Personnel Management for the December 2014 reporting period. ¹Non-Federal Workers Data calculated from the US Bureau of Labor Statistics 2014 Annual Averages https://www.bls.gov/news.release/archives/vet_03182015.pdf. ²Employment categories consistent with the definitions given by the US Office of Personnel Management "Introduction to the Position Classification Standards" 2009. For a description of the employment categories, refer to <http://www.opm.gov/policy-data-oversight/classification-qualifications/classifying-general-schedule-positions/positionclassificationintro.pdf>.

Who are the Civilian Federal Employees in Pennsylvania - 2013

Federal Workers in Pennsylvania: 67,055

Percentage Who Are Veterans: 24.36%

Non-Federal Workers in Pennsylvania: 5,902,000¹

Percentage Who Are Veterans: 7.25%¹

Five Largest Federal Employers

VA: 14,446



Army: 8,661



Defense: 8,016



Treasury: 6,254



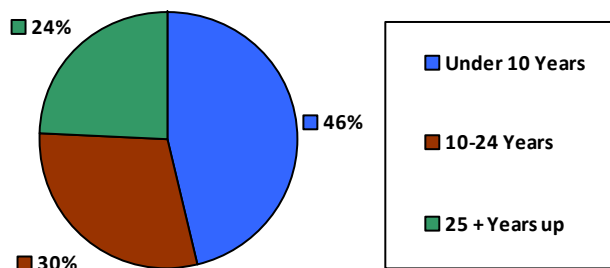
Navy: 5,724



Race and Ethnicity

White, non-Hispanic	52,203	77.8%
Black/African American, non-Hispanic	10,475	15.6%
Hispanic or Latino	2,127	3.2%
Asian, non-Hispanic	1,578	2.4%
Two or more races	359	0.5%
American Indian and Alaska Native	257	0.4%
Native Hawaiian and Other Pacific Islander	48	0.1%

Length of Service



Educational Attainment

HS or Below	22,308	33.3%
Occupational Program	3,320	5.0%
Between HS and Bachelors	12,266	18.3%
Bachelors + Post Bachelors	21,116	31.5%
Masters and Post Grad	6,844	10.2%
Doctorate and Post Doc	1,126	1.7%

Gender

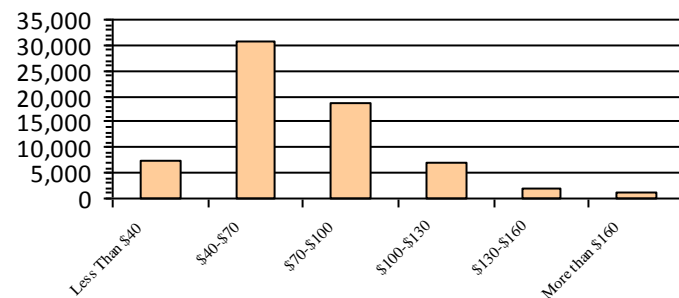
M	37,319	55.6%
F	29,736	44.3%

Age

<35	12,907	19.2%
35-54	34,969	52.1%
55+	19,179	28.6%

Number of Employees

Average Salary (in thousands)



Type of Employment²

Administrative	23,571	35.1%
Professional	14,621	21.8%
Technical	13,723	20.5%
Clerical	3,845	5.7%
Other White Collar	2,648	3.9%
Blue Collar	8,645	12.9%

All data unless otherwise noted is provided by the US Office of Personnel Management for the December 2013 reporting period. ¹Non-Federal Workers Data calculated from the US Bureau of Labor Statistics 2013 Annual Averages https://www.bls.gov/news.release/archives/vet_03202014.pdf. ²Employment categories consistent with the definitions given by the US Office of Personnel Management "Introduction to the Position Classification Standards" 2009. For a description of the employment categories, refer to <http://www.opm.gov/policy-data-oversight/classification-qualifications/classifying-general-schedule-positions/positionclassificationintro.pdf>.