

Who are the Civilian Federal Employees in Oklahoma - 2022

Federal Workers in Oklahoma: 42,397
Percentage Who Are Veterans: 29.74%

Non-Federal Workers in Oklahoma: 1,791,000¹
*Percentage Who Are Veterans: 6.42%*¹

Five Largest Federal Employers

Air Force: 17,385

VA: 6,832

Army: 4,761

DOT: 3,403

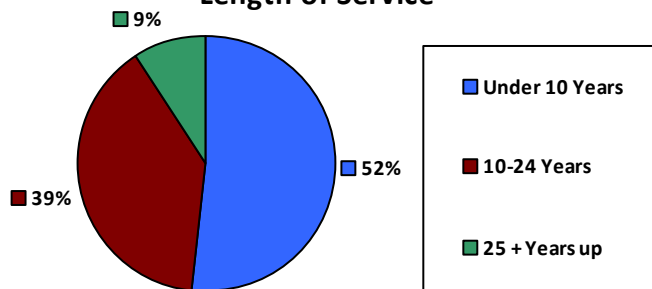
Defense: 2,687



Race and Ethnicity

White, non-Hispanic	27,410	64.6%
Black/African American, non-Hispanic	4,399	10.4%
Hispanic or Latino	2,250	5.3%
Asian, non-Hispanic	2,169	5.1%
Two or more races	2,005	4.7%
American Indian and Alaska Native	3,699	8.7%
Native Hawaiian and Other Pacific Islander	106	0.2%

Length of Service



Educational Attainment

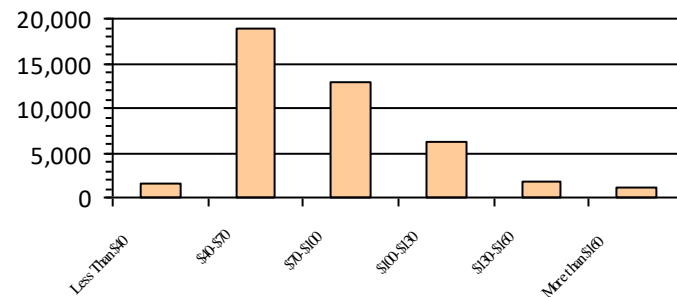
HS or Below	16,310	38.5%
Occupational Program	1,494	3.5%
Between HS and Bachelors	7,074	16.7%
Bachelors + Post Bachelors	10,883	25.7%
Masters and Post Grad	5,921	14.0%
Doctorate and Post Doc	673	1.6%

Gender

Age

Gender	Count	Percentage	Age Group	Count	Percentage
M	26,829	63.3%	<35	8,072	19.0%
			35-54	22,649	53.4%
F	15,568	36.7%	55+	11,676	27.5%

Average Salary (in thousands)



Type of Employment²

Administrative	14,559	34.3%
Professional	8,757	20.7%
Technical	6,259	14.8%
Clerical	1,528	3.6%
Other White Collar	1,015	2.4%
Blue Collar	10,241	24.2%

All data unless otherwise noted is provided by the US Office of Personnel Management for the December 2022 reporting period. ¹Non-Federal Workers Data calculated from the US Bureau of Labor Statistics 2022 Annual Averages <https://www.bls.gov/news.release/pdf/vet.pdf>. ²Employment categories consistent with the definitions given by the US Office of Personnel Management "Introduction to the Position Classification Standards" 2009. For a description of the employment categories, refer to <http://www.opm.gov/policy-data-oversight/classification-qualifications/classifying-general-schedule-positions/positionclassificationintro.pdf>.