

## Who are the Civilian Federal Employees in

# Oklahoma - 2021

**Federal Workers in Oklahoma: 42,194**

Percentage Who Are Veterans: 30.52%

**Non-Federal Workers in Oklahoma: 1,757,000**<sup>1</sup>

Percentage Who Are Veterans: 6.32%<sup>1</sup>

### Five Largest Federal Employers

Air Force: 17,842



VA: 6,468



Army: 5,516



DOT: 3,364



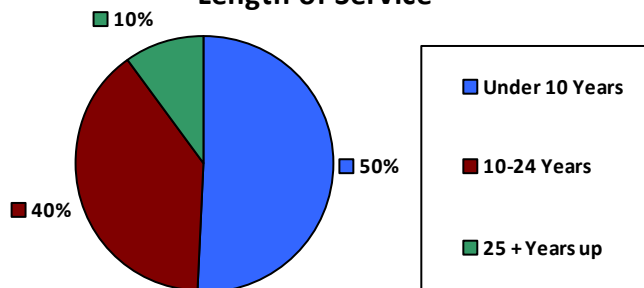
Defense: 1,810



### Race and Ethnicity

White, non-Hispanic	27,680	65.6%
Black/African American, non-Hispanic	4,377	10.4%
Hispanic or Latino	2,147	5.1%
Asian, non-Hispanic	2,080	4.9%
Two or more races	1,857	4.4%
American Indian and Alaska Native	3,693	8.8%
Native Hawaiian and Other Pacific Islander	104	0.2%

### Length of Service



### Educational Attainment

HS or Below	16,096	38.1%
Occupational Program	1,569	3.7%
Between HS and Bachelors	7,209	17.1%
Bachelors + Post Bachelors	10,805	25.6%
Masters and Post Grad	5,781	13.7%
Doctorate and Post Doc	674	1.6%

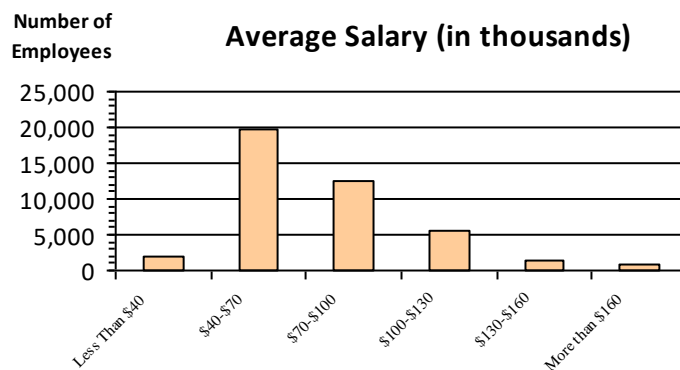
### Gender

M	26,984	63.9%
F	15,209	36.0%

### Age

<35	8,104	19.2%
35-54	22,325	52.9%
55+	11,765	27.9%

### Average Salary (in thousands)



### Type of Employment<sup>2</sup>

Administrative	8,661	20.5%
Professional	6,411	15.2%
Technical	1,502	3.6%
Clerical	992	2.4%
Other White Collar	10,502	24.9%
Blue Collar	10,825	25.7%

All data unless otherwise noted is provided by the US Office of Personnel Management for the December 2015 reporting period. <sup>1</sup>Non-Federal Workers Data calculated from the US Bureau of Labor Statistics 2015 Annual Averages [https://www.bls.gov/news.release/archives/vet\\_03222016.pdf](https://www.bls.gov/news.release/archives/vet_03222016.pdf). <sup>2</sup>Employment categories consistent with the definitions given by the US Office of Personnel Management "Introduction to the Position Classification Standards" 2009. For a description of the employment categories, refer to <http://www.opm.gov/policy-data-oversight/classification-qualifications/classifying-general-schedule-positions/positionclassificationintro.pdf>.

# Who are the Civilian Federal Employees in Oklahoma - 2020

**Federal Workers in Oklahoma: 42,028**  
*Percentage Who Are Veterans: 31.20%*

**Non-Federal Workers in Oklahoma: 1,710,000**<sup>1</sup>  
*Percentage Who Are Veterans: 7.19%*<sup>1</sup>

## Five Largest Federal Employers

Air Force: 17,901

VA: 6,363

Army: 5,596

DOT: 3,387

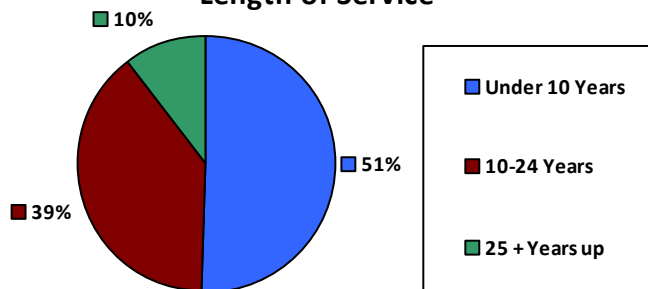
Defense: 1,819



### Race and Ethnicity

White, non-Hispanic	27,908	66.4%
Black/African American, non-Hispanic	4,425	10.5%
Hispanic or Latino	2,036	4.8%
Asian, non-Hispanic	1,970	4.7%
Two or more races	1,786	4.2%
American Indian and Alaska Native	3,617	8.6%
Native Hawaiian and Other Pacific Islander	113	0.3%

### Length of Service



### Educational Attainment

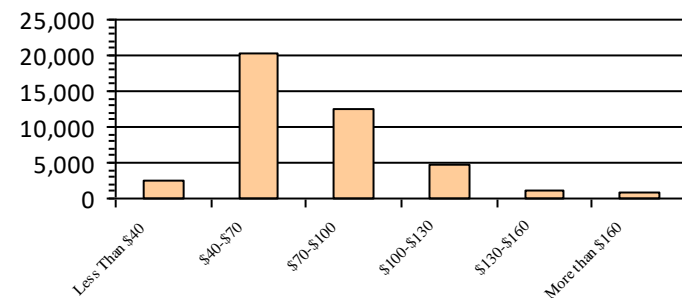
HS or Below	15,980	38.0%
Occupational Program	1,661	4.0%
Between HS and Bachelors	7,359	17.5%
Bachelors + Post Bachelors	10,698	25.5%
Masters and Post Grad	5,615	13.3%
Doctorate and Post Doc	644	1.5%

### Gender

### Age

Gender	Count	Percentage	Age Group	Count	Percentage
M	26,935	64.1%	<35	8,220	19.6%
			35-54	22,032	52.4%
F	15,092	35.9%	55+	11,776	28.0%

### Average Salary (in thousands)



### Type of Employment

<sup>2</sup>

Administrative	13,863	33.0%
Professional	8,412	20.0%
Technical	6,370	15.2%
Clerical	1,497	3.6%
Other White Collar	1,025	2.4%
Blue Collar	10,825	25.8%

All data unless otherwise noted is provided by the US Office of Personnel Management for the December 2015 reporting period. <sup>1</sup>Non-Federal Workers Data calculated from the US Bureau of Labor Statistics 2015 Annual Averages [https://www.bls.gov/news.release/archives/vet\\_03222016.pdf](https://www.bls.gov/news.release/archives/vet_03222016.pdf). <sup>2</sup>Employment categories consistent with the definitions given by the US Office of Personnel Management "Introduction to the Position Classification Standards" 2009. For a description of the employment categories, refer to <http://www.opm.gov/policy-data-oversight/classification-qualifications/classifying-general-schedule-positions/positionclassificationintro.pdf>.

# Who are the Civilian Federal Employees in Oklahoma - 2019

**Federal Workers in Oklahoma: 41,271**  
*Percentage Who Are Veterans: 31.61%*

**Non-Federal Workers in Oklahoma: 1,750,000<sup>1</sup>**  
*Percentage Who Are Veterans: 7.43%<sup>1</sup>*

## Five Largest Federal Employers

Air Force: 17,570



VA: 6,047



Army: 5,487



DOT: 3,391



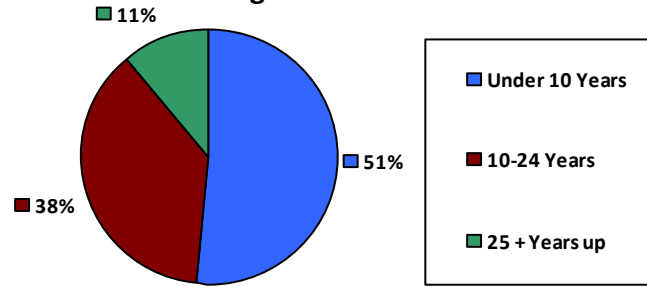
Defense: 1,840



### Race and Ethnicity

White, non-Hispanic	27,626	66.9%
Black/African American, non-Hispanic	4,361	10.6%
Hispanic or Latino	1,966	4.8%
Asian, non-Hispanic	1,844	4.5%
Two or more races	1,712	4.1%
American Indian and Alaska Native	3,602	8.7%
Native Hawaiian and Other Pacific Islander	109	0.3%

### Length of Service



### Educational Attainment

HS or Below	15,230	36.9%
Occupational Program	2,043	4.9%
Between HS and Bachelors	7,539	18.3%
Bachelors + Post Bachelors	10,375	25.1%
Masters and Post Grad	5,412	13.1%
Doctorate and Post Doc	623	1.5%

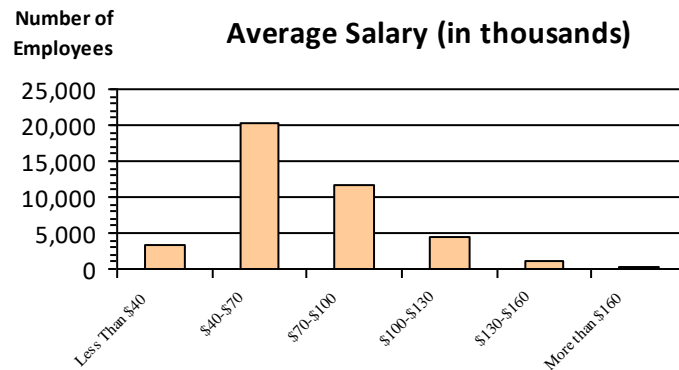
### Gender

M	26,501	64.2%
F	14,769	35.8%

### Age

<35	7,887	19.1%
35-54	21,701	52.6%
55+	11,683	28.3%

### Average Salary (in thousands)



### Type of Employment<sup>2</sup>

Administrative	13,421	32.5%
Professional	8,065	19.5%
Technical	6,263	15.2%
Clerical	1,543	3.7%
Other White Collar	983	2.4%
Blue Collar	10,956	26.5%

All data unless otherwise noted is provided by the US Office of Personnel Management for the December 2015 reporting period. <sup>1</sup>Non-Federal Workers Data calculated from the US Bureau of Labor Statistics 2015 Annual Averages [https://www.bls.gov/news.release/archives/vet\\_03222016.pdf](https://www.bls.gov/news.release/archives/vet_03222016.pdf). <sup>2</sup>Employment categories consistent with the definitions given by the US Office of Personnel Management "Introduction to the Position Classification Standards" 2009. For a description of the employment categories, refer to <http://www.opm.gov/policy-data-oversight/classification-qualifications/classifying-general-schedule-positions/positionclassificationintro.pdf>.

# Who are the Civilian Federal Employees in Oklahoma - 2018

**Federal Workers in Oklahoma: 40,845**  
*Percentage Who Are Veterans: 32.23%*

**Non-Federal Workers in Oklahoma: 1,762,000**<sup>1</sup>  
*Percentage Who Are Veterans: 7.83%*<sup>1</sup>

## Five Largest Federal Employers

Air Force: 17,432

VA: 5,833

Army: 5,567

DOT: 3,424

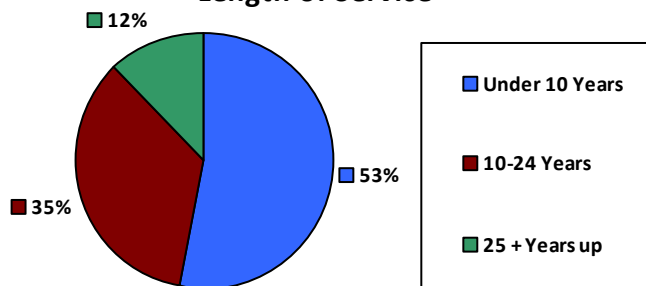
Defense: 1,780



### Race and Ethnicity

White, non-Hispanic	27,479	67.3%
Black/African American, non-Hispanic	4,340	10.6%
Hispanic or Latino	1,945	4.8%
Asian, non-Hispanic	1,779	4.4%
Two or more races	1,593	3.9%
American Indian and Alaska Native	3,573	8.7%
Native Hawaiian and Other Pacific Islander	115	0.3%

### Length of Service



### Educational Attainment

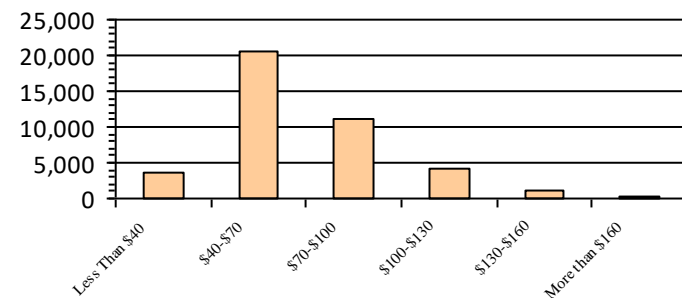
HS or Below	14,898	36.5%
Occupational Program	2,102	5.1%
Between HS and Bachelors	7,671	18.8%
Bachelors + Post Bachelors	10,296	25.2%
Masters and Post Grad	5,208	12.7%
Doctorate and Post Doc	602	1.5%

### Gender

### Age

Gender	Count	Percentage	Age Group	Count	Percentage
M	26,328	64.5%	<35	7,820	19.1%
			35-54	21,622	52.9%
F	14,511	35.5%	55+	11,403	27.9%

### Average Salary (in thousands)



### Type of Employment<sup>2</sup>

Administrative	13,049	31.9%
Professional	7,879	19.3%
Technical	6,293	15.4%
Clerical	1,521	3.7%
Other White Collar	952	2.3%
Blue Collar	11,117	27.2%

All data unless otherwise noted is provided by the US Office of Personnel Management for the December 2018 reporting period. <sup>1</sup>Non-Federal Workers Data calculated from the US Bureau of Labor Statistics 2018 Annual Averages [www.bls.gov/news.release/pdf/vet.pdf](http://www.bls.gov/news.release/pdf/vet.pdf). <sup>2</sup>Employment categories consistent with the definitions given by the US Office of Personnel Management "Introduction to the Position Classification Standards" 2009. For a description of the employment categories, refer to [www.opm.gov/policy-data-oversight/classification-qualifications/classifying-general-schedule-positions/positionclassificationintro.pdf](http://www.opm.gov/policy-data-oversight/classification-qualifications/classifying-general-schedule-positions/positionclassificationintro.pdf).

## Who are the Civilian Federal Employees in

# Oklahoma - 2017

**Federal Workers in Oklahoma: 40,047**

Percentage Who Are Veterans: 32.92%

**Non-Federal Workers in Oklahoma: 1,744,000<sup>1</sup>**

Percentage Who Are Veterans: 9.14%<sup>2</sup>

### Five Largest Federal Employers

Air Force: 17,115



VA: 5,516



Army: 5,202



DOT: 3,552



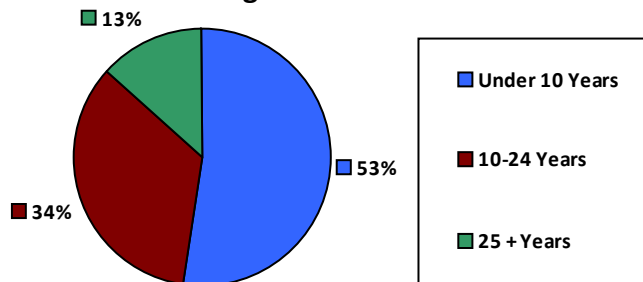
Defense: 1,749



### Race and Ethnicity

White, non-Hispanic	27,154	67.8%
Black/African American, non-Hispanic	4,220	10.5%
Hispanic or Latino	1,842	4.6%
Asian, non-Hispanic	1,715	4.3%
Two or more races	1,459	3.6%
American Indian and Alaska Native	3,547	8.9%
Native Hawaiian and Other Pacific Islander	107	0.3%

### Length of Service



### Educational Attainment

HS or Below	14,395	35.9%
Occupational Program	2,192	5.5%
Between HS and Bachelors	7,776	19.4%
Bachelors + Post Bachelors	10,145	25.3%
Masters and Post Grad	4,950	12.4%
Doctorate and Post Doc	560	1.4%

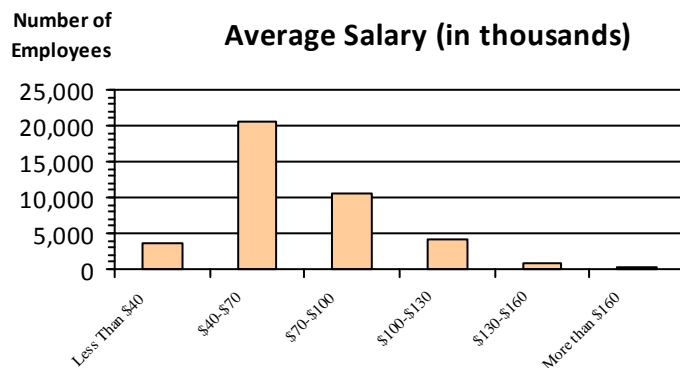
### Gender

M	25,956	64.8%
F	14,084	35.2%

### Age

<35	7,463	18.6%
35-54	21,328	53.3%
55+	11,256	28.1%

### Average Salary (in thousands)



### Type of Employment<sup>2</sup>

Administrative	12,528	31.3%
Professional	7,706	19.2%
Technical	6,393	16.0%
Clerical	1,458	3.6%
Other White Collar	935	2.3%
Blue Collar	11,013	27.5%

All data unless otherwise noted is provided by the US Office of Personnel Management for the December 2017 reporting period. Non-Federal Workers Data calculated from the US Bureau of Labor Statistics 2017 Annual Averages <https://www.bls.gov/news.release/vet.htm>.<sup>1</sup> Employment categories consistent with the definitions given by the US Office of Personnel Management "Introduction to the Position Classification Standards" (Revised: 2009), available at <https://www.opm.gov/policy-data-oversight/classification-qualifications/classifying-general-schedule-positions/positionclassificationintro.pdf>.<sup>2</sup>

# Who are the Civilian Federal Employees in Oklahoma - 2016

**Federal Workers in Oklahoma: 40,022**  
*Percentage Who Are Veterans: 33.41%*

**Non-Federal Workers in Oklahoma: 1,729,000**<sup>1</sup>  
*Percentage Who Are Veterans: 9.08%*<sup>1</sup>

## Five Largest Federal Employers

Air Force: 16,986

VA: 5,385

Army: 5,333

DOT: 3,635

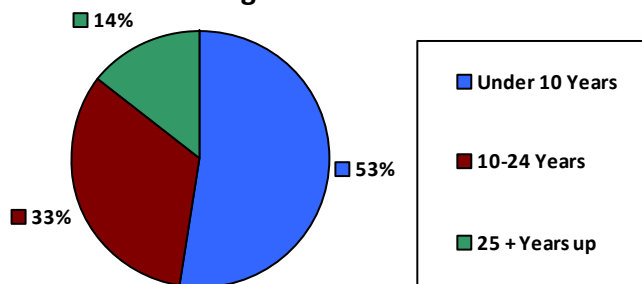
Defense: 1,719



### Race and Ethnicity

White, non-Hispanic	27,390	68.4%
Black/African American, non-Hispanic	4,214	10.5%
Hispanic or Latino	1,783	4.5%
Asian, non-Hispanic	1,659	4.1%
Two or more races	1,332	3.3%
American Indian and Alaska Native	3,546	8.9%
Native Hawaiian and Other Pacific Islander	95	0.2%

### Length of Service



### Educational Attainment

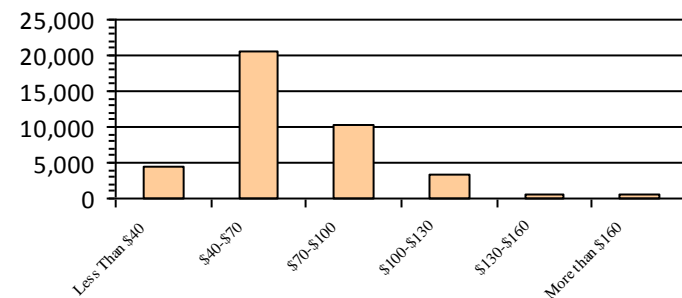
HS or Below	14,405	36.0%
Occupational Program	2,274	5.7%
Between HS and Bachelors	7,876	19.7%
Bachelors + Post Bachelors	10,153	25.4%
Masters and Post Grad	4,743	11.8%
Doctorate and Post Doc	549	1.4%

### Gender

### Age

Gender	Count	Percentage	Age Group	Count	Percentage
M	26,028	65.0%	<35	7,653	19.1%
			35-54	21,472	53.6%
F	13,992	35.0%	55+	10,897	27.2%

### Average Salary (in thousands)



### Type of Employment<sup>2</sup>

Administrative	12,438	31.1%
Professional	7,620	19.0%
Technical	6,555	16.4%
Clerical	1,479	3.7%
Other White Collar	977	2.4%
Blue Collar	10,940	27.3%

All data unless otherwise noted is provided by the US Office of Personnel Management for the December 2016 reporting period. <sup>1</sup>Non-Federal Workers Data calculated from the US Bureau of Labor Statistics 2015 Annual Averages [https://www.bls.gov/news.release/archives/vet\\_03222016.pdf](https://www.bls.gov/news.release/archives/vet_03222016.pdf). <sup>2</sup>Employment categories consistent with the definitions given by the US Office of Personnel Management "Introduction to the Position Classification Standards" 2009. For a description of the employment categories, refer to <http://www.opm.gov/policy-data-oversight/classification-qualifications/classifying-general-schedule-positions/positionclassificationintro.pdf>.

# Who are the Civilian Federal Employees in Oklahoma - 2015

**Federal Workers in Oklahoma: 38,983**  
*Percentage Who Are Veterans: 34.02%*

**Non-Federal Workers in Oklahoma: 1,767,000**<sup>1</sup>  
*Percentage Who Are Veterans: 9.11%*<sup>1</sup>

## Five Largest Federal Employers

Air Force: 16,061

Army: 5,350

VA: 5,295

DOT: 3,587

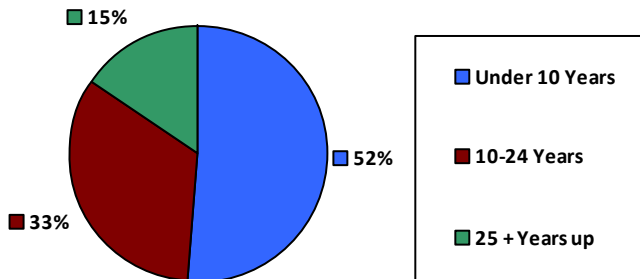
Defense: 1,684



### Race and Ethnicity

White, non-Hispanic	27,027	69.3%
Black/African American, non-Hispanic	4,027	10.3%
Hispanic or Latino	1,709	4.4%
Asian, non-Hispanic	1,510	3.9%
Two or more races	1,164	3.0%
American Indian and Alaska Native	3,449	8.8%
Native Hawaiian and Other Pacific Islander	95	0.2%

### Length of Service



### Educational Attainment

HS or Below	13,855	35.5%
Occupational Program	2,168	5.6%
Between HS and Bachelors	7,840	20.1%
Bachelors + Post Bachelors	10,017	25.7%
Masters and Post Grad	4,549	11.7%
Doctorate and Post Doc	529	1.4%

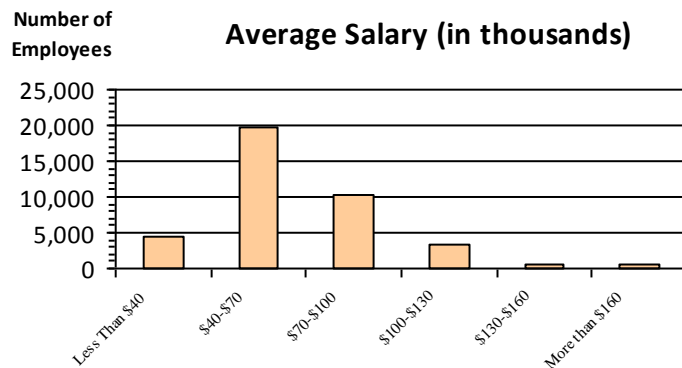
### Gender

M	25,119	64.4%
F	13,863	35.6%

### Age

<35	7,223	18.5%
35-54	21,180	54.3%
55+	10,580	27.1%

### Average Salary (in thousands)



### Type of Employment<sup>2</sup>

Administrative	12,291	31.5%
Professional	7,412	19.0%
Technical	6,691	17.2%
Clerical	1,443	3.7%
Other White Collar	1,011	2.6%
Blue Collar	10,123	26.0%

All data unless otherwise noted is provided by the US Office of Personnel Management for the December 2015 reporting period. <sup>1</sup>Non-Federal Workers Data calculated from the US Bureau of Labor Statistics 2015 Annual Averages [https://www.bls.gov/news.release/archives/vet\\_03222016.pdf](https://www.bls.gov/news.release/archives/vet_03222016.pdf). <sup>2</sup>Employment categories consistent with the definitions given by the US Office of Personnel Management "Introduction to the Position Classification Standards" 2009. For a description of the employment categories, refer to <http://www.opm.gov/policy-data-oversight/classification-qualifications/classifying-general-schedule-positions/positionclassificationintro.pdf>.

# Who are the Civilian Federal Employees in Oklahoma - 2014

**Federal Workers in Oklahoma: 38,275**  
*Percentage Who Are Veterans: 33.78%*

**Non-Federal Workers in Oklahoma: 1,680,000<sup>1</sup>**  
*Percentage Who Are Veterans: 8.93%<sup>1</sup>*

## Five Largest Federal Employers

Air Force: 15,445

Army: 5,310

VA: 5,120

DOT: 3,601

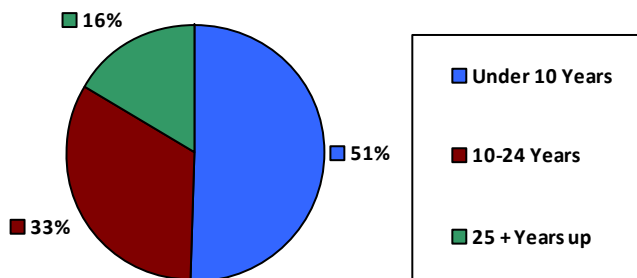
Defense: 1,688



### Race and Ethnicity

White, non-Hispanic	26,757	69.9%
Black/African American, non-Hispanic	3,914	10.2%
Hispanic or Latino	1,644	4.3%
Asian, non-Hispanic	1,373	3.6%
Two or more races	1,038	2.7%
American Indian and Alaska Native	3,472	9.1%
Native Hawaiian and Other Pacific Islander	75	0.2%

### Length of Service



### Educational Attainment

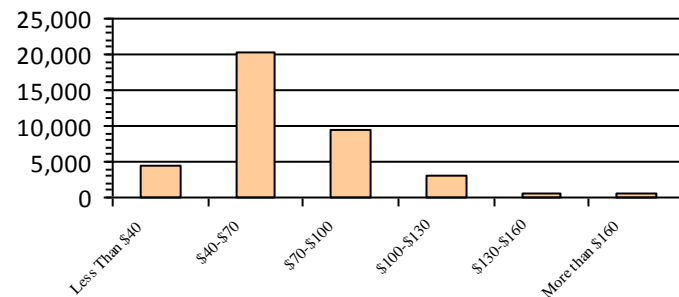
HS or Below	13,841	36.2%
Occupational Program	1,992	5.2%
Between HS and Bachelors	7,861	20.5%
Bachelors + Post Bachelors	9,788	25.6%
Masters and Post Grad	4,271	11.1%
Doctorate and Post Doc	502	1.3%

### Gender

### Age

Gender	Count	Percentage	Age Group	Count	Percentage
M	24,534	64.1%	<35	6,990	18.3%
			35-54	21,060	55.0%
F	13,741	35.9%	55+	10,225	26.7%

### Average Salary (in thousands)



### Type of Employment<sup>2</sup>

Administrative	12,082	31.6%
Professional	7,257	19.0%
Technical	6,605	17.3%
Clerical	1,509	3.9%
Other White Collar	934	2.4%
Blue Collar	9,876	25.8%

All data unless otherwise noted is provided by the US Office of Personnel Management for the December 2014 reporting period. <sup>1</sup>Non-Federal Workers Data calculated from the US Bureau of Labor Statistics 2014 Annual Averages [https://www.bls.gov/news.release/archives/vet\\_03182015.pdf](https://www.bls.gov/news.release/archives/vet_03182015.pdf). <sup>2</sup>Employment categories consistent with the definitions given by the US Office of Personnel Management "Introduction to the Position Classification Standards" 2009. For a description of the employment categories, refer to <http://www.opm.gov/policy-data-oversight/classification-qualifications/classifying-general-schedule-positions/positionclassificationintro.pdf>.



# Who are the Civilian Federal Employees in Oklahoma - 2013

**Federal Workers in Oklahoma: 38,066**  
*Percentage Who Are Veterans: 33.73%*

**Non-Federal Workers in Oklahoma: 1,696,000**<sup>1</sup>  
*Percentage Who Are Veterans: 8.96%*<sup>1</sup>

## Five Largest Federal Employers

Air Force: 15,244



Army: 5,240



VA: 4,953



DOT: 3,683



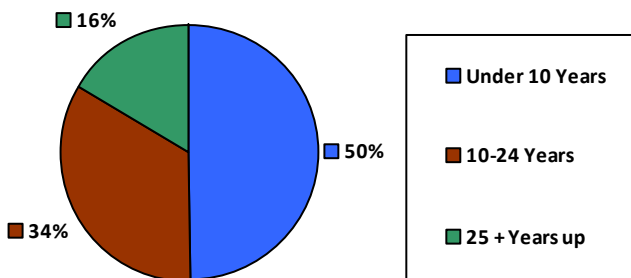
Defense: 1,642



### Race and Ethnicity

White, non-Hispanic	26,762	70.3%
Black/African American, non-Hispanic	3,892	10.2%
Hispanic or Latino	1,588	4.2%
Asian, non-Hispanic	1,318	3.5%
Two or more races	903	2.4%
American Indian and Alaska Native	3,535	9.3%
Native Hawaiian and Other Pacific Islander	65	0.2%

### Length of Service



### Educational Attainment

HS or Below	13,654	35.9%
Occupational Program	1,962	5.2%
Between HS and Bachelors	7,937	20.8%
Bachelors + Post Bachelors	9,918	26.1%
Masters and Post Grad	4,083	10.7%
Doctorate and Post Doc	491	1.3%

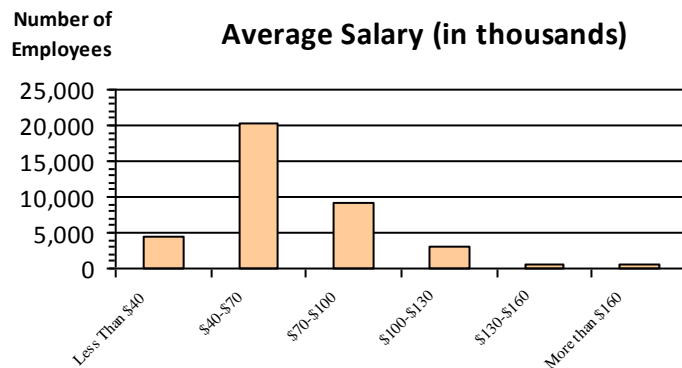
### Gender

M	24,254	63.7%
F	13,812	36.3%

### Age

<35	6,824	17.9%
35-54	21,283	55.9%
55+	9,959	26.2%

### Average Salary (in thousands)



### Type of Employment<sup>2</sup>

Administrative	12,016	31.6%
Professional	7,230	19.0%
Technical	6,635	17.4%
Clerical	1,613	4.2%
Other White Collar	967	2.5%
Blue Collar	9,594	25.2%

All data unless otherwise noted is provided by the US Office of Personnel Management for the December 2013 reporting period. <sup>1</sup>Non-Federal Workers Data calculated from the US Bureau of Labor Statistics 2013 Annual Averages [https://www.bls.gov/news.release/archives/vet\\_03202014.pdf](https://www.bls.gov/news.release/archives/vet_03202014.pdf). <sup>2</sup>Employment categories consistent with the definitions given by the US Office of Personnel Management "Introduction to the Position Classification Standards" 2009. For a description of the employment categories, refer to <http://www.opm.gov/policy-data-oversight/classification-qualifications/classifying-general-schedule-positions/positionclassificationintro.pdf>.