

Who are the Civilian Federal Employees in

Ohio - 2021

Federal Workers in Ohio: 55,924

Percentage Who Are Veterans: 28.76%

Non-Federal Workers in Ohio: 5,313,000¹

Percentage Who Are Veterans: 6.36%¹

Five Largest Federal Employers

Air Force: 15,853



VA: 15,324



Defense: 9,193



DHS: 1,809



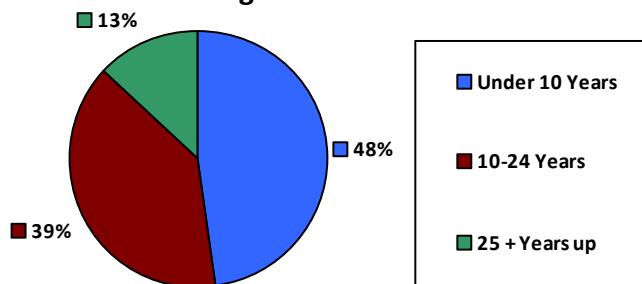
Treasury: 1,803



Race and Ethnicity

White, non-Hispanic	42,299	75.6%
Black/African American, non-Hispanic	9,033	16.2%
Hispanic or Latino	1,689	3.0%
Asian, non-Hispanic	1,518	2.7%
Two or more races	883	1.6%
American Indian and Alaska Native	208	0.4%
Native Hawaiian and Other Pacific Islander	76	0.1%

Length of Service



Educational Attainment

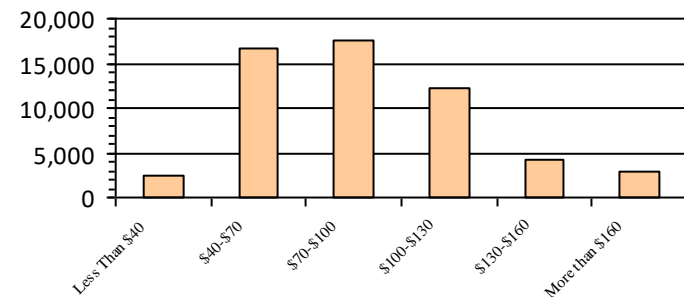
HS or Below	12,153	21.7%
Occupational Program	1,126	2.0%
Between HS and Bachelors	8,255	14.8%
Bachelors + Post Bachelors	18,315	32.7%
Masters and Post Grad	13,384	23.9%
Doctorate and Post Doc	2,625	4.7%

Gender

Age

Gender	Total		Age		Total %
	Count	%	Count	%	
M	30,149	53.9%	<35	10,222	18.3%
			35-54	29,161	52.1%
F	25,774	46.1%	55+	16,541	29.6%

Average Salary (in thousands)



Type of Employment²

Administrative	19,890	35.6%
Professional	8,961	16.0%
Technical	2,436	4.4%
Clerical	1,044	1.9%
Other White Collar	2,869	5.1%
Blue Collar	2,941	5.3%

All data unless otherwise noted is provided by the US Office of Personnel Management for the December 2015 reporting period. ¹Non-Federal Workers Data calculated from the US Bureau of Labor Statistics 2015 Annual Averages https://www.bls.gov/news.release/archives/vet_03222016.pdf. ²Employment categories consistent with the definitions given by the US Office of Personnel Management "Introduction to the Position Classification Standards" 2009. For a description of the employment categories, refer to <http://www.opm.gov/policy-data-oversight/classification-qualifications/classifying-general-schedule-positions/positionclassificationintro.pdf>.

Who are the Civilian Federal Employees in

Ohio - 2020

Federal Workers in Ohio: 55,864

Percentage Who Are Veterans: 29.18%

Non-Federal Workers in Ohio: 5,146,000¹

Percentage Who Are Veterans: 6.14%¹

Five Largest Federal Employers

Air Force: 15,834



VA: 15,169



Defense: 9,363



DHS: 1,743



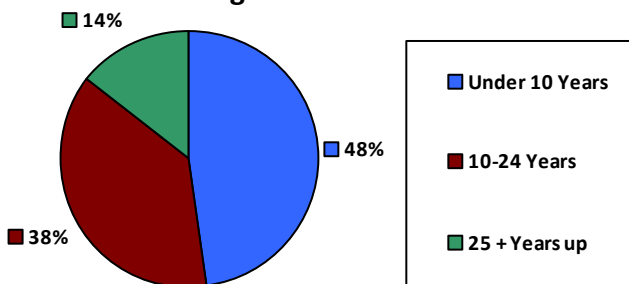
Justice: 1,732



Race and Ethnicity

White, non-Hispanic	42,166	75.5%
Black/African American, non-Hispanic	9,133	16.3%
Hispanic or Latino	1,709	3.1%
Asian, non-Hispanic	1,498	2.7%
Two or more races	833	1.5%
American Indian and Alaska Native	221	0.4%
Native Hawaiian and Other Pacific Islander	71	0.1%

Length of Service



Educational Attainment

HS or Below	12,166	21.8%
Occupational Program	1,140	2.0%
Between HS and Bachelors	8,508	15.2%
Bachelors + Post Bachelors	18,165	32.5%
Masters and Post Grad	13,206	23.6%
Doctorate and Post Doc	2,594	4.6%

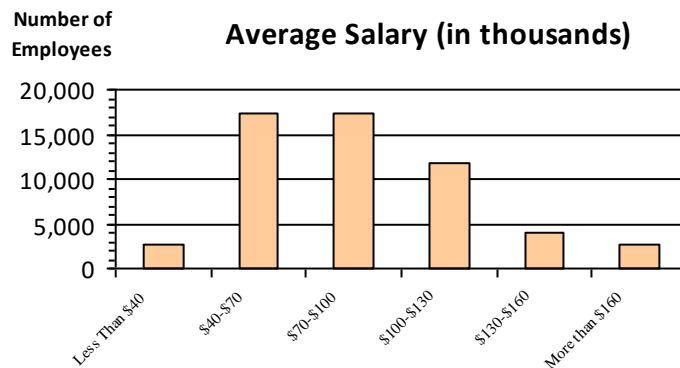
Gender

M	30,241	54.1%
F	25,622	45.9%

Age

<35	10,482	18.8%
35-54	28,813	51.6%
55+	16,569	29.7%

Average Salary (in thousands)



Type of Employment²

Administrative	20,391	36.5%
Professional	19,664	35.2%
Technical	9,353	16.7%
Clerical	2,316	4.1%
Other White Collar	1,159	2.1%
Blue Collar	2,941	5.3%

All data unless otherwise noted is provided by the US Office of Personnel Management for the December 2015 reporting period. ¹Non-Federal Workers Data calculated from the US Bureau of Labor Statistics 2015 Annual Averages https://www.bls.gov/news.release/archives/vet_03222016.pdf. ²Employment categories consistent with the definitions given by the US Office of Personnel Management "Introduction to the Position Classification Standards" 2009. For a description of the employment categories, refer to <http://www.opm.gov/policy-data-oversight/classification-qualifications/classifying-general-schedule-positions/positionclassificationintro.pdf>.

Who are the Civilian Federal Employees in

Ohio - 2019

Federal Workers in Ohio: 55,498

Percentage Who Are Veterans: 29.46%

Non-Federal Workers in Ohio: 5,545,000¹

Percentage Who Are Veterans: 6.33%¹

Five Largest Federal Employers

Air Force: 15,458



VA: 15,048



Defense: 9,522



DHS: 1,791



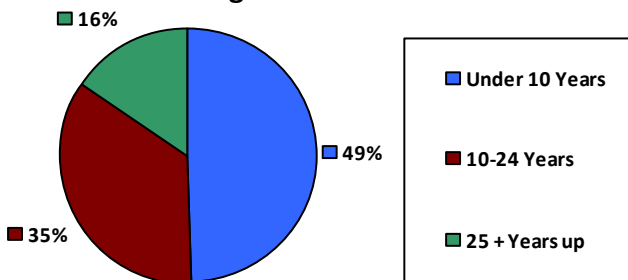
Justice: 1,733



Race and Ethnicity

White, non-Hispanic	41,997	75.7%
Black/African American, non-Hispanic	9,166	16.5%
Hispanic or Latino	1,673	3.0%
Asian, non-Hispanic	1,457	2.6%
Two or more races	808	1.5%
American Indian and Alaska Native	221	0.4%
Native Hawaiian and Other Pacific Islander	74	0.1%

Length of Service



Educational Attainment

HS or Below	11,033	19.9%
Occupational Program	2,048	3.7%
Between HS and Bachelors	9,010	16.2%
Bachelors + Post Bachelors	17,860	32.2%
Masters and Post Grad	12,721	22.9%
Doctorate and Post Doc	2,737	4.9%

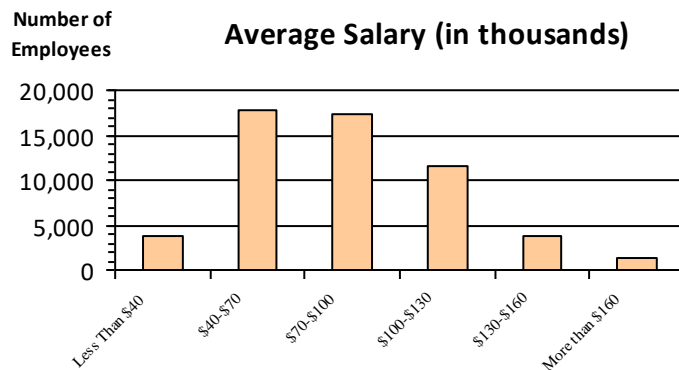
Gender

M	30,138	54.3%
F	25,358	45.7%

Age

<35	10,526	19.0%
35-54	28,543	51.4%
55+	16,429	29.6%

Average Salary (in thousands)



Type of Employment²

Administrative	19,911	35.9%
Professional	19,335	34.8%
Technical	9,522	17.2%
Clerical	2,474	4.5%
Other White Collar	1,206	2.2%
Blue Collar	3,007	5.4%

All data unless otherwise noted is provided by the US Office of Personnel Management for the December 2015 reporting period. ¹Non-Federal Workers Data calculated from the US Bureau of Labor Statistics 2015 Annual Averages https://www.bls.gov/news.release/archives/vet_03222016.pdf. ²Employment categories consistent with the definitions given by the US Office of Personnel Management "Introduction to the Position Classification Standards" 2009. For a description of the employment categories, refer to <http://www.opm.gov/policy-data-oversight/classification-qualifications/classifying-general-schedule-positions/positionclassificationintro.pdf>.

Who are the Civilian Federal Employees in

Ohio - 2018

Federal Workers in Ohio: 54,552

Percentage Who Are Veterans: 29.67%

Air Force: 14,975



VA: 14,831



Defense: 9,542



DHS: 1,798



Treasury: 1,746



Five Largest Federal Employers

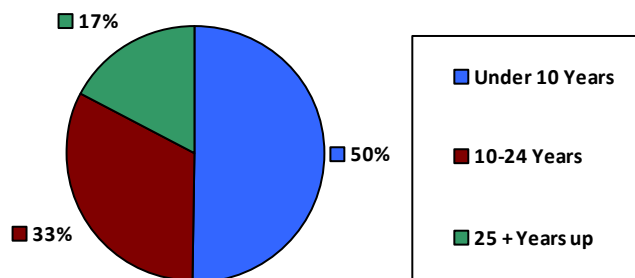
Non-Federal Workers in Ohio: 5,392,000¹

Percentage Who Are Veterans: 6.38%¹

Race and Ethnicity

White, non-Hispanic	41,384	75.9%
Black/African American, non-Hispanic	9,020	16.5%
Hispanic or Latino	1,627	3.0%
Asian, non-Hispanic	1,418	2.6%
Two or more races	771	1.4%
American Indian and Alaska Native	235	0.4%
Native Hawaiian and Other Pacific Islander	76	0.1%

Length of Service



Educational Attainment

HS or Below	10,547	19.3%
Occupational Program	2,103	3.9%
Between HS and Bachelors	9,179	16.8%
Bachelors + Post Bachelors	17,649	32.3%
Masters and Post Grad	12,404	22.7%
Doctorate and Post Doc	2,604	4.8%

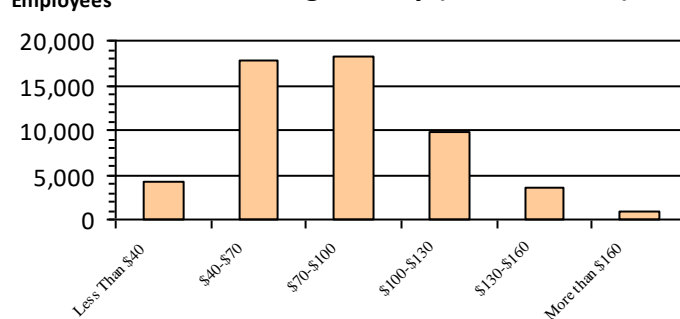
Gender

M	29,660	54.4%
F	24,879	45.6%

Age

<35	10,261	18.8%
35-54	28,130	51.6%
55+	16,161	29.6%

Average Salary (in thousands)



Type of Employment²

Administrative	19,319	35.4%
Professional	18,953	34.7%
Technical	9,644	17.7%
Clerical	2,484	4.6%
Other White Collar	1,066	2.0%
Blue Collar	3,045	5.6%

All data unless otherwise noted is provided by the US Office of Personnel Management for the December 2018 reporting period. ¹Non-Federal Workers Data calculated from the US Bureau of Labor Statistics 2018 Annual Averages www.bls.gov/news.release/pdf/vet.pdf. ²Employment categories consistent with the definitions given by the US Office of Personnel Management "Introduction to the Position Classification Standards" 2009. For a description of the employment categories, refer to www.opm.gov/policy-data-oversight/classification-qualifications/classifying-general-schedule-positions/positionclassificationintro.pdf.

Who are the Civilian Federal Employees in

Ohio - 2017

Federal Workers in Ohio: 54,082

Percentage Who Are Veterans: 29.77%

Non-Federal Workers in Ohio: 5,391,000¹

Percentage Who Are Veterans: 7.09%²

Five Largest Federal Employers

Air Force: 14,612



VA: 14,593



Defense: 9,635



DHS: 1,749



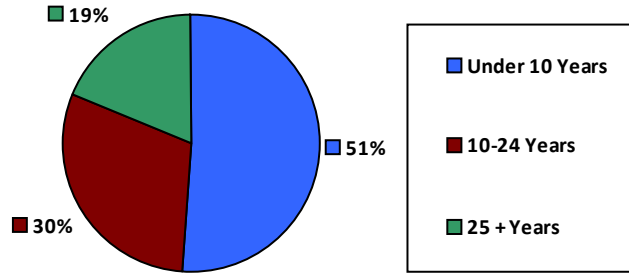
Treasury: 1,707



Race and Ethnicity

White, non-Hispanic	41,206	76.2%
Black/African American, non-Hispanic	8,927	16.5%
Hispanic or Latino	1,525	2.8%
Asian, non-Hispanic	1,399	2.6%
Two or more races	698	1.3%
American Indian and Alaska Native	247	0.5%
Native Hawaiian and Other Pacific Islander	72	0.1%

Length of Service



Educational Attainment

HS or Below	10,367	19.2%
Occupational Program	2,152	4.0%
Between HS and Bachelors	9,424	17.4%
Bachelors + Post Bachelors	17,493	32.3%
Masters and Post Grad	12,067	22.3%
Doctorate and Post Doc	2,495	4.6%

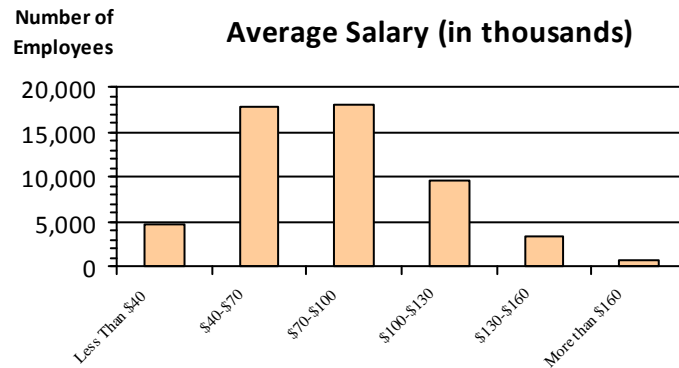
Gender

M	29,463	54.5%
F	24,612	45.5%

Age

<35	10,228	18.9%
35-54	27,971	51.7%
55+	15,883	29.4%

Average Salary (in thousands)



Type of Employment²

Administrative	18,958	35.1%
Professional	18,819	34.8%
Technical	9,616	17.8%
Clerical	2,473	4.6%
Other White Collar	1,121	2.1%
Blue Collar	3,095	5.7%

All data unless otherwise noted is provided by the US Office of Personnel Management for the December 2017 reporting period. Non-Federal Workers Data calculated from the US Bureau of Labor Statistics 2017 Annual Averages <https://www.bls.gov/news.release/vet.htm>.¹ Employment categories consistent with the definitions given by the US Office of Personnel Management "Introduction to the Position Classification Standards" (Revised: 2009), available at <https://www.opm.gov/policy-data-oversight/classification-qualifications/classifying-general-schedule-positions/positionclassificationintro.pdf>.²

Who are the Civilian Federal Employees in

Ohio - 2016

Federal Workers in Ohio: 54,120

Percentage Who Are Veterans: 29.66%

Non-Federal Workers in Ohio: 5,366,000¹

Percentage Who Are Veterans: 7.21%¹

Five Largest Federal Employers

Air Force: 14,618



VA: 14,175



Defense: 9,636



Treasury: 1,907



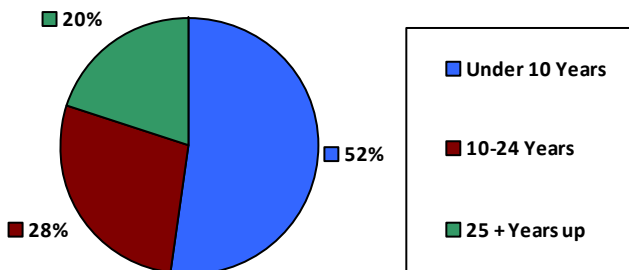
DHS: 1,737



Race and Ethnicity

White, non-Hispanic	41,360	76.4%
Black/African American, non-Hispanic	8,941	16.5%
Hispanic or Latino	1,475	2.7%
Asian, non-Hispanic	1,363	2.5%
Two or more races	650	1.2%
American Indian and Alaska Native	263	0.5%
Native Hawaiian and Other Pacific Islander	63	0.1%

Length of Service



Educational Attainment

HS or Below	10,513	19.4%
Occupational Program	2,160	4.0%
Between HS and Bachelors	9,628	17.8%
Bachelors + Post Bachelors	17,570	32.5%
Masters and Post Grad	11,804	21.8%
Doctorate and Post Doc	2,395	4.4%

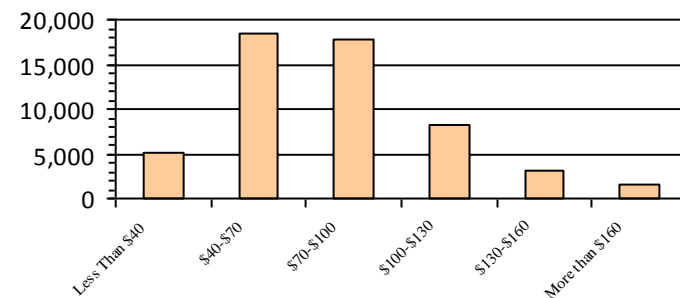
Gender

M	29,484	54.5%
F	24,615	45.5%

Age

<35	10,542	19.5%
35-54	27,988	51.7%
55+	15,590	28.8%

Average Salary (in thousands)



Type of Employment²

Administrative	18,884	34.9%
Professional	18,620	34.4%
Technical	9,850	18.2%
Clerical	2,518	4.7%
Other White Collar	1,159	2.1%
Blue Collar	3,088	5.7%

All data unless otherwise noted is provided by the US Office of Personnel Management for the December 2016 reporting period. ¹Non-Federal Workers Data calculated from the US Bureau of Labor Statistics 2015 Annual Averages https://www.bls.gov/news.release/archives/vet_03222016.pdf. ²Employment categories consistent with the definitions given by the US Office of Personnel Management "Introduction to the Position Classification Standards" 2009. For a description of the employment categories, refer to <http://www.opm.gov/policy-data-oversight/classification-qualifications/classifying-general-schedule-positions/positionclassificationintro.pdf>.

Who are the Civilian Federal Employees in

Ohio - 2015

Federal Workers in Ohio: 53,118

Percentage Who Are Veterans: 29.54%

Non-Federal Workers in Ohio: 5,337,000¹

Percentage Who Are Veterans: 7.21%¹

Five Largest Federal Employers

Air Force: 14,443



VA: 13,561



Defense: 9,328



Treasury: 2,049



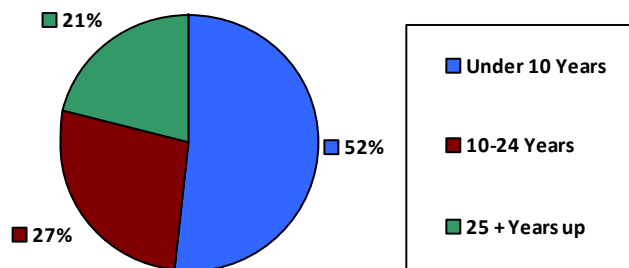
DHS: 1,672



Race and Ethnicity

White, non-Hispanic	40,878	76.9%
Black/African American, non-Hispanic	8,657	16.3%
Hispanic or Latino	1,379	2.6%
Asian, non-Hispanic	1,296	2.4%
Two or more races	572	1.1%
American Indian and Alaska Native	274	0.5%
Native Hawaiian and Other Pacific Islander	59	0.1%

Length of Service



Educational Attainment

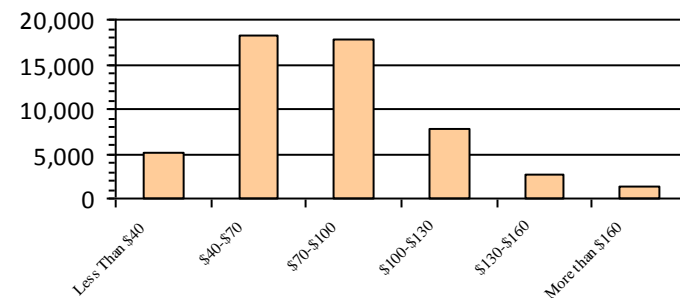
HS or Below	10,562	19.9%
Occupational Program	2,182	4.1%
Between HS and Bachelors	9,622	18.1%
Bachelors + Post Bachelors	17,226	32.4%
Masters and Post Grad	11,258	21.2%
Doctorate and Post Doc	2,222	4.2%

Gender

Age

Gender	Gender		Age	
	Count	Percentage	Age Group	Percentage
M	29,004	54.6%	<35	10,211 (19.2%)
			35-54	27,809 (52.3%)
F	24,114	45.4%	55+	15,098 (28.4%)

Average Salary (in thousands)



Type of Employment²

Administrative	18,685	35.2%
Professional	17,948	33.8%
Technical	9,812	18.5%
Clerical	2,349	4.4%
Other White Collar	1,184	2.2%
Blue Collar	3,138	5.9%

All data unless otherwise noted is provided by the US Office of Personnel Management for the December 2015 reporting period. ¹Non-Federal Workers Data calculated from the US Bureau of Labor Statistics 2015 Annual Averages https://www.bls.gov/news.release/archives/vet_03222016.pdf. ²Employment categories consistent with the definitions given by the US Office of Personnel Management "Introduction to the Position Classification Standards" 2009. For a description of the employment categories, refer to <http://www.opm.gov/policy-data-oversight/classification-qualifications/classifying-general-schedule-positions/positionclassificationintro.pdf>.

Who are the Civilian Federal Employees in

Ohio - 2014

Federal Workers in Ohio: 52,298

Percentage Who Are Veterans: 29.15%

Non-Federal Workers in Ohio: 5,318,000¹

Percentage Who Are Veterans: 7.20%¹

Five Largest Federal Employers

Air Force: 14,174



VA: 13,262



Defense: 9,041



Treasury: 2,055



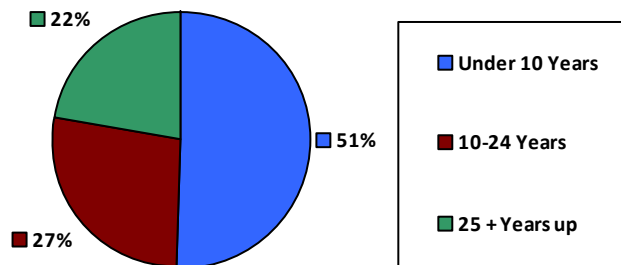
DHS: 1,681



Race and Ethnicity

White, non-Hispanic	40,575	77.6%
Black/African American, non-Hispanic	8,354	16.0%
Hispanic or Latino	1,300	2.5%
Asian, non-Hispanic	1,248	2.4%
Two or more races	506	1.0%
American Indian and Alaska Native	258	0.5%
Native Hawaiian and Other Pacific Islander	52	0.1%

Length of Service



Educational Attainment

HS or Below	10,521	20.1%
Occupational Program	2,155	4.1%
Between HS and Bachelors	9,685	18.5%
Bachelors + Post Bachelors	16,993	32.5%
Masters and Post Grad	10,773	20.6%
Doctorate and Post Doc	2,108	4.0%

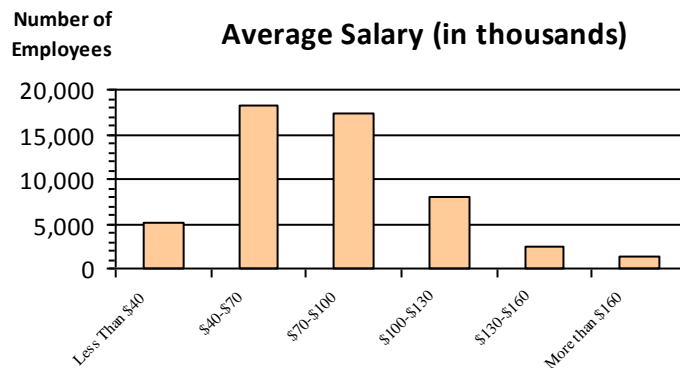
Gender

M	28,501	54.5%
F	23,797	45.5%

Age

<35	9,943	19.0%
35-54	27,728	53.0%
55+	14,627	28.0%

Average Salary (in thousands)



Type of Employment²

Administrative	18,577	35.5%
Professional	17,580	33.6%
Technical	9,626	18.4%
Clerical	2,240	4.3%
Other White Collar	1,221	2.3%
Blue Collar	3,053	5.8%

All data unless otherwise noted is provided by the US Office of Personnel Management for the December 2014 reporting period. ¹Non-Federal Workers Data calculated from the US Bureau of Labor Statistics 2014 Annual Averages https://www.bls.gov/news.release/archives/vet_03182015.pdf. ²Employment categories consistent with the definitions given by the US Office of Personnel Management "Introduction to the Position Classification Standards" 2009. For a description of the employment categories, refer to <http://www.opm.gov/policy-data-oversight/classification-qualifications/classifying-general-schedule-positions/positionclassificationintro.pdf>.

Who are the Civilian Federal Employees in

Ohio - 2013

Federal Workers in Ohio: 52,396

Percentage Who Are Veterans: 28.54%

Non-Federal Workers in Ohio: 5,177,000¹

Percentage Who Are Veterans: 7.47%¹

Five Largest Federal Employers

Air Force: 14,134



VA: 12,969



Defense: 9,128



Treasury: 2,177



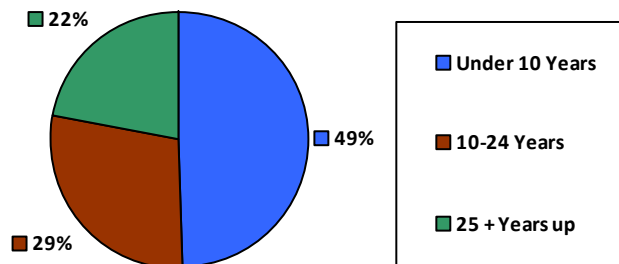
DHS: 1,799



Race and Ethnicity

White, non-Hispanic	40,716	77.7%
Black/African American, non-Hispanic	8,443	16.1%
Hispanic or Latino	1,257	2.4%
Asian, non-Hispanic	1,233	2.4%
Two or more races	447	0.9%
American Indian and Alaska Native	252	0.5%
Native Hawaiian and Other Pacific Islander	39	0.1%

Length of Service



Educational Attainment

HS or Below	10,822	20.7%
Occupational Program	2,173	4.1%
Between HS and Bachelors	9,898	18.9%
Bachelors + Post Bachelors	17,041	32.5%
Masters and Post Grad	10,359	19.8%
Doctorate and Post Doc	2,064	3.9%

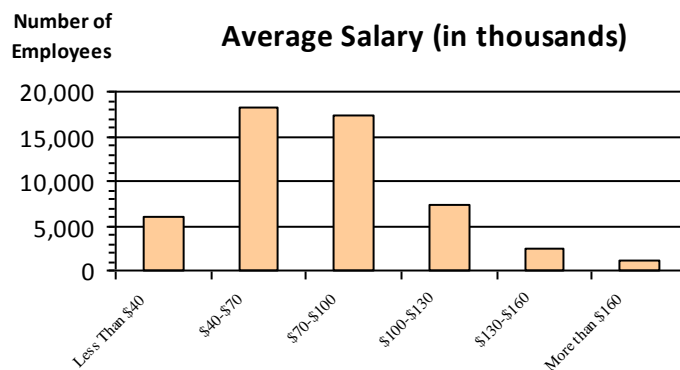
Gender

M	28,446	54.3%
F	23,950	45.7%

Age

<35	9,897	18.9%
35-54	27,935	53.3%
55+	14,564	27.8%

Average Salary (in thousands)



Type of Employment²

Administrative	18,553	35.4%
Professional	17,363	33.1%
Technical	9,766	18.6%
Clerical	2,453	4.7%
Other White Collar	1,190	2.3%
Blue Collar	3,067	5.9%

All data unless otherwise noted is provided by the US Office of Personnel Management for the December 2013 reporting period. ¹Non-Federal Workers Data calculated from the US Bureau of Labor Statistics 2013 Annual Averages https://www.bls.gov/news.release/archives/vet_03202014.pdf. ²Employment categories consistent with the definitions given by the US Office of Personnel Management "Introduction to the Position Classification Standards" 2009. For a description of the employment categories, refer to <http://www.opm.gov/policy-data-oversight/classification-qualifications/classifying-general-schedule-positions/positionclassificationintro.pdf>.