

Who are the Civilian Federal Employees in North Carolina - 2021

Federal Workers in North Carolina: 51,630

Percentage Who Are Veterans: 39.08%

Non-Federal Workers in North Carolina: 4,745,000¹

Percentage Who Are Veterans: 6.93%¹

Five Largest Federal Employers

VA: 14,518



Army: 7,933



Navy: 7,829



Defense: 5,345



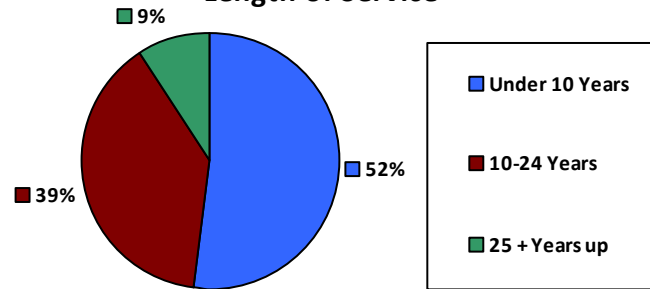
DHS: 3,124



Race and Ethnicity

White, non-Hispanic	32,254	62.5%
Black/African American, non-Hispanic	13,344	25.8%
Hispanic or Latino	2,535	4.9%
Asian, non-Hispanic	1,643	3.2%
Two or more races	907	1.8%
American Indian and Alaska Native	589	1.1%
Native Hawaiian and Other Pacific Islander	155	0.3%

Length of Service



Educational Attainment

HS or Below	14,721	28.5%
Occupational Program	1,067	2.1%
Between HS and Bachelors	9,897	19.2%
Bachelors + Post Bachelors	15,607	30.2%
Masters and Post Grad	8,089	15.7%
Doctorate and Post Doc	2,219	4.3%

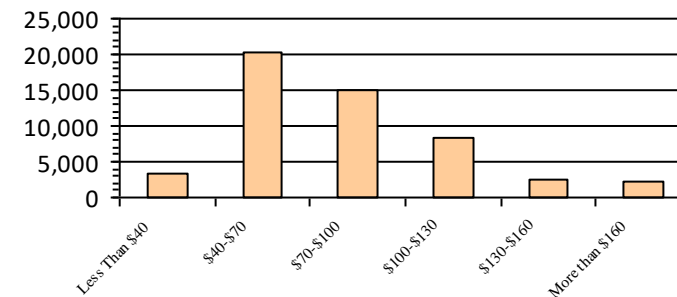
Gender

M	26,916	52.1%
F	24,714	47.9%

Age

<35	7,602	14.7%
35-54	28,557	55.3%
55+	15,471	30.0%

Average Salary (in thousands)



Type of Employment²

Administrative	14,545	28.2%
Professional	9,874	19.1%
Technical	3,353	6.5%
Clerical	1,994	3.9%
Other White Collar	5,107	9.9%
Blue Collar	5,287	10.2%

All data unless otherwise noted is provided by the US Office of Personnel Management for the December 2015 reporting period. ¹Non-Federal Workers Data calculated from the US Bureau of Labor Statistics 2015 Annual Averages https://www.bls.gov/news.release/archives/vet_03222016.pdf. ²Employment categories consistent with the definitions given by the US Office of Personnel Management "Introduction to the Position Classification Standards" 2009. For a description of the employment categories, refer to <http://www.opm.gov/policy-data-oversight/classification-qualifications/classifying-general-schedule-positions/positionclassificationintro.pdf>.

Who are the Civilian Federal Employees in North Carolina - 2020

Federal Workers in North Carolina: 51,397

Percentage Who Are Veterans: 39.87%

Non-Federal Workers in North Carolina: 4,571,000¹

Percentage Who Are Veterans: 6.61%¹

Five Largest Federal Employers

VA: 14,213



Army: 11,098



Navy: 7,829



DHS: 3,038



Defense: 2,536



Race and Ethnicity

White, non-Hispanic	32,246	62.7%
Black/African American, non-Hispanic	13,395	26.1%
Hispanic or Latino	2,463	4.8%
Asian, non-Hispanic	1,568	3.1%
Two or more races	862	1.7%
American Indian and Alaska Native	580	1.1%
Native Hawaiian and Other Pacific Islander	146	0.3%

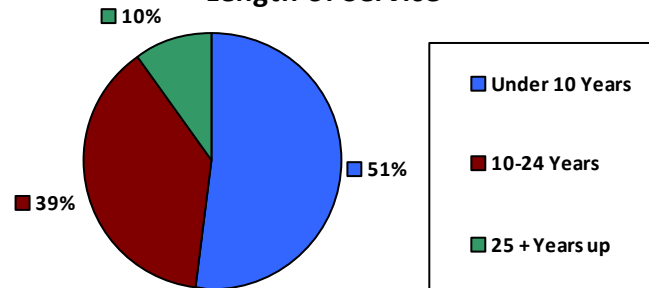
Gender

M	27,008	52.5%
F	24,386	47.4%

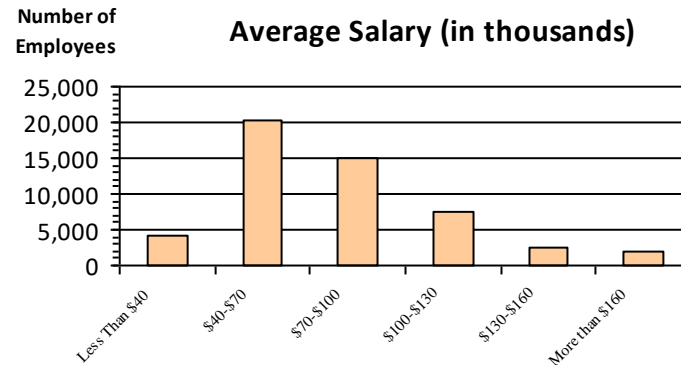
Age

<35	7,753	15.1%
35-54	28,184	54.8%
55+	15,460	30.1%

Length of Service



Average Salary (in thousands)



Educational Attainment

HS or Below	14,766	28.7%
Occupational Program	1,028	2.0%
Between HS and Bachelors	10,062	19.6%
Bachelors + Post Bachelors	15,475	30.1%
Masters and Post Grad	7,950	15.5%
Doctorate and Post Doc	2,077	4.0%

Type of Employment²

Administrative	16,437	32.0%
Professional	14,297	27.8%
Technical	9,876	19.2%
Clerical	3,406	6.6%
Other White Collar	2,043	4.0%
Blue Collar	5,287	10.3%

All data unless otherwise noted is provided by the US Office of Personnel Management for the December 2015 reporting period. ¹Non-Federal Workers Data calculated from the US Bureau of Labor Statistics 2015 Annual Averages https://www.bls.gov/news.release/archives/vet_03222016.pdf. ²Employment categories consistent with the definitions given by the US Office of Personnel Management "Introduction to the Position Classification Standards" 2009. For a description of the employment categories, refer to <http://www.opm.gov/policy-data-oversight/classification-qualifications/classifying-general-schedule-positions/positionclassificationintro.pdf>.

Who are the Civilian Federal Employees in North Carolina - 2019

Federal Workers in North Carolina: 50,160

Percentage Who Are Veterans: 40.64%

Non-Federal Workers in North Carolina: 4,852,000¹

Percentage Who Are Veterans: 7.09%¹

Five Largest Federal Employers

VA: 13,705



Army: 10,606



Navy: 7,763



DHS: 3,061



Defense: 2,564



Race and Ethnicity

White, non-Hispanic	30,487	60.8%
Black/African American, non-Hispanic	12,979	25.9%
Hispanic or Latino	2,334	4.7%
Asian, non-Hispanic	1,467	2.9%
Two or more races	815	1.6%
American Indian and Alaska Native	568	1.1%
Native Hawaiian and Other Pacific Islander	128	0.3%

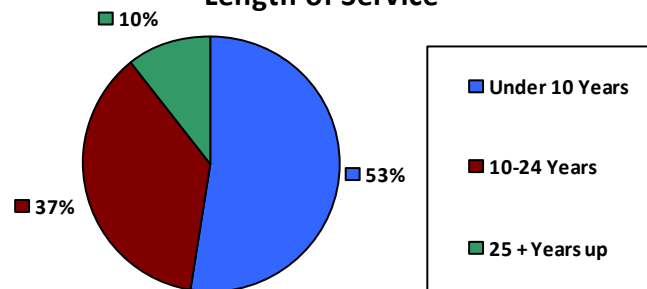
Gender

M	26,499	52.8%
F	23,656	47.2%

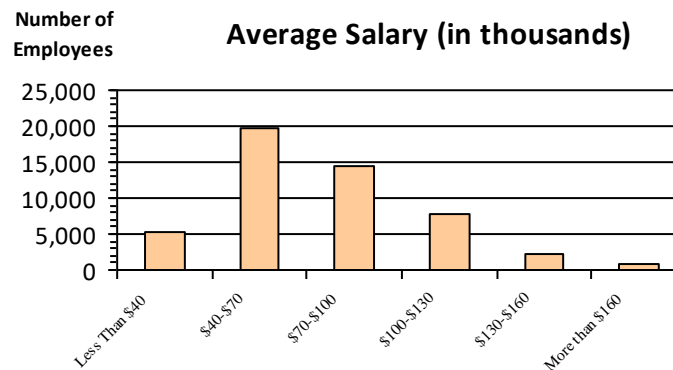
Age

<35	7,263	14.5%
35-54	27,725	55.3%
55+	15,172	30.2%

Length of Service



Average Salary (in thousands)



Educational Attainment

HS or Below	13,687	27.3%
Occupational Program	1,672	3.3%
Between HS and Bachelors	10,215	20.4%
Bachelors + Post Bachelors	14,828	29.6%
Masters and Post Grad	7,474	14.9%
Doctorate and Post Doc	2,234	4.5%

Type of Employment²

Administrative	15,830	31.6%
Professional	13,824	27.6%
Technical	9,639	19.2%
Clerical	3,614	7.2%
Other White Collar	1,994	4.0%
Blue Collar	5,205	10.4%

All data unless otherwise noted is provided by the US Office of Personnel Management for the December 2015 reporting period. ¹Non-Federal Workers Data calculated from the US Bureau of Labor Statistics 2015 Annual Averages https://www.bls.gov/news.release/archives/vet_03222016.pdf. ²Employment categories consistent with the definitions given by the US Office of Personnel Management "Introduction to the Position Classification Standards" 2009. For a description of the employment categories, refer to <http://www.opm.gov/policy-data-oversight/classification-qualifications/classifying-general-schedule-positions/positionclassificationintro.pdf>.

Who are the Civilian Federal Employees in North Carolina - 2018

Federal Workers in North Carolina: 49,069

Percentage Who Are Veterans: 41.13%

Non-Federal Workers in North Carolina: 4,767,000¹

Percentage Who Are Veterans: 7.15%¹

Five Largest Federal Employers

VA: 13,047



Army: 10,455



Navy: 7,754



DHS: 2,984



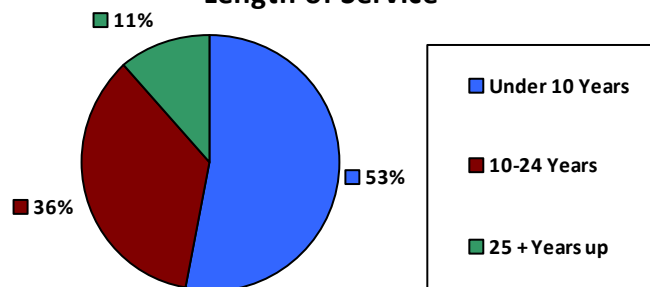
Defense: 2,542



Race and Ethnicity

White, non-Hispanic	29,700	60.5%
Black/African American, non-Hispanic	12,766	26.0%
Hispanic or Latino	2,273	4.6%
Asian, non-Hispanic	1,393	2.8%
Two or more races	767	1.6%
American Indian and Alaska Native	561	1.1%
Native Hawaiian and Other Pacific Islander	123	0.3%

Length of Service



Educational Attainment

HS or Below	13,261	27.0%
Occupational Program	1,742	3.5%
Between HS and Bachelors	10,172	20.7%
Bachelors + Post Bachelors	14,537	29.6%
Masters and Post Grad	7,198	14.7%
Doctorate and Post Doc	2,102	4.3%

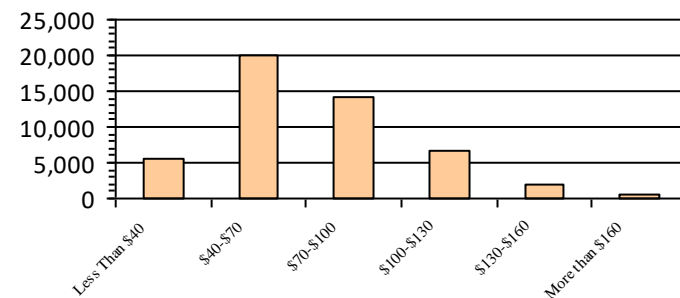
Gender

M	26,170	53.4%
F	22,864	46.6%

Age

<35	7,142	14.6%
35-54	27,420	55.9%
55+	14,506	29.6%

Average Salary (in thousands)



Type of Employment²

Administrative	15,509	31.6%
Professional	13,361	27.2%
Technical	9,610	19.6%
Clerical	3,441	7.0%
Other White Collar	1,785	3.6%
Blue Collar	5,319	10.8%

All data unless otherwise noted is provided by the US Office of Personnel Management for the December 2018 reporting period. ¹Non-Federal Workers Data calculated from the US Bureau of Labor Statistics 2018 Annual Averages www.bls.gov/news.release/pdf/vet.pdf. ²Employment categories consistent with the definitions given by the US Office of Personnel Management "Introduction to the Position Classification Standards" 2009. For a description of the employment categories, refer to www.opm.gov/policy-data-oversight/classification-qualifications/classifying-general-schedule-positions/positionclassificationintro.pdf.

Who are the Civilian Federal Employees in North Carolina - 2017

Federal Workers in North Carolina: 47,955

Percentage Who Are Veterans: 41.55%

Non-Federal Workers in North Carolina: 4,639,000¹

Percentage Who Are Veterans: 8.11%²

Five Largest Federal Employers

VA: 12,727



Army: 10,298



Navy: 7,344



DHS: 2,808



Defense: 2,479



Race and Ethnicity

White, non-Hispanic	30,313	63.2%
Black/African American, non-Hispanic	12,698	26.5%
Hispanic or Latino	2,190	4.6%
Asian, non-Hispanic	1,372	2.9%
Two or more races	701	1.5%
American Indian and Alaska Native	556	1.2%
Native Hawaiian and Other Pacific Islander	113	0.2%

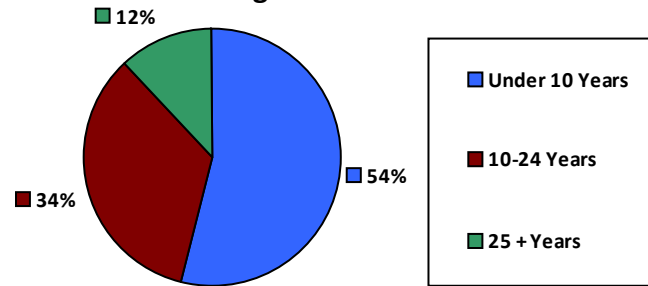
Gender

M	25,678	53.6%
F	22,268	46.4%

Age

<35	6,940	14.5%
35-54	27,013	56.3%
55+	14,000	29.2%

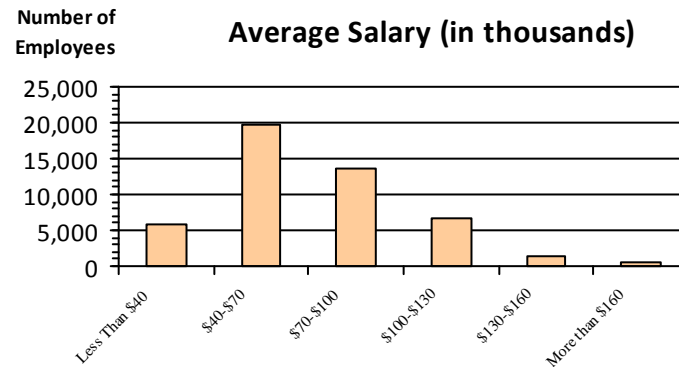
Length of Service



Educational Attainment

HS or Below	13,177	27.5%
Occupational Program	1,749	3.6%
Between HS and Bachelors	9,976	20.8%
Bachelors + Post Bachelors	14,081	29.4%
Masters and Post Grad	6,867	14.3%
Doctorate and Post Doc	2,035	4.2%

Average Salary (in thousands)



Type of Employment²

Administrative	15,064	31.4%
Professional	13,007	27.1%
Technical	9,558	19.9%
Clerical	3,320	6.9%
Other White Collar	1,772	3.7%
Blue Collar	5,233	10.9%

All data unless otherwise noted is provided by the US Office of Personnel Management for the December 2017 reporting period. Non-Federal Workers Data calculated from the US Bureau of Labor Statistics 2017 Annual Averages <https://www.bls.gov/news.release/vet.htm>.¹ Employment categories consistent with the definitions given by the US Office of Personnel Management "Introduction to the Position Classification Standards" (Revised: 2009), available at <https://www.opm.gov/policy-data-oversight/classification-qualifications/classifying-general-schedule-positions/positionclassificationintro.pdf>.²

Who are the Civilian Federal Employees in North Carolina - 2016

Federal Workers in North Carolina: 48,103

Percentage Who Are Veterans: 41.66%

Non-Federal Workers in North Carolina: 4,593,000¹

Percentage Who Are Veterans: 8.25%¹

Five Largest Federal Employers

VA: 12,062



Army: 10,490



Navy: 7,591



DHS: 2,718



Defense: 2,571



Race and Ethnicity

White, non-Hispanic	30,794	64.0%
Black/African American, non-Hispanic	12,574	26.1%
Hispanic or Latino	2,078	4.3%
Asian, non-Hispanic	1,344	2.8%
Two or more races	652	1.4%
American Indian and Alaska Native	544	1.1%
Native Hawaiian and Other Pacific Islander	106	0.2%

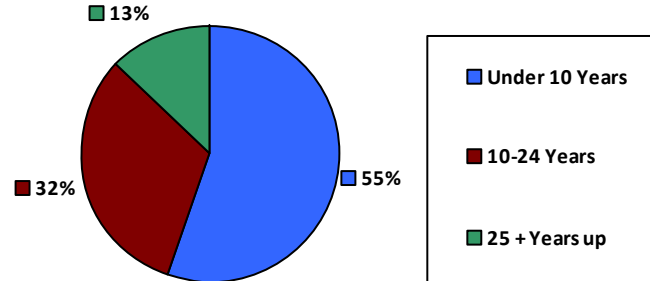
Gender

M	25,944	54.0%
F	22,140	46.0%

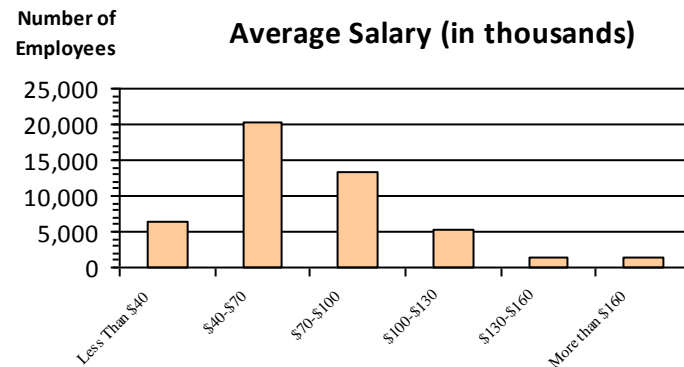
Age

<35	7,223	15.0%
35-54	27,128	56.4%
55+	13,751	28.6%

Length of Service



Average Salary (in thousands)



Educational Attainment

HS or Below	13,771	28.6%
Occupational Program	1,841	3.8%
Between HS and Bachelors	9,950	20.7%
Bachelors + Post Bachelors	13,994	29.1%
Masters and Post Grad	6,573	13.7%
Doctorate and Post Doc	1,943	4.0%

Type of Employment²

Administrative	14,924	31.0%
Professional	12,824	26.7%
Technical	9,518	19.8%
Clerical	3,531	7.3%
Other White Collar	1,803	3.7%
Blue Collar	5,500	11.4%

All data unless otherwise noted is provided by the US Office of Personnel Management for the December 2016 reporting period. ¹Non-Federal Workers Data calculated from the US Bureau of Labor Statistics 2015 Annual Averages https://www.bls.gov/news.release/archives/vet_03222016.pdf. ²Employment categories consistent with the definitions given by the US Office of Personnel Management "Introduction to the Position Classification Standards" 2009. For a description of the employment categories, refer to <http://www.opm.gov/policy-data-oversight/classification-qualifications/classifying-general-schedule-positions/positionclassificationintro.pdf>.

Who are the Civilian Federal Employees in North Carolina - 2015

Federal Workers in North Carolina: 47,325

Percentage Who Are Veterans: 41.85%

Non-Federal Workers in North Carolina: 4,481,000¹

Percentage Who Are Veterans: 8.59%¹

Five Largest Federal Employers

VA: 11,672



Army: 10,321



Navy: 7,527



Defense: 2,621



DHS: 2,611



Race and Ethnicity

White, non-Hispanic	30,657	64.8%
Black/African American, non-Hispanic	12,294	26.0%
Hispanic or Latino	1,914	4.0%
Asian, non-Hispanic	1,265	2.7%
Two or more races	575	1.2%
American Indian and Alaska Native	527	1.1%
Native Hawaiian and Other Pacific Islander	90	0.2%

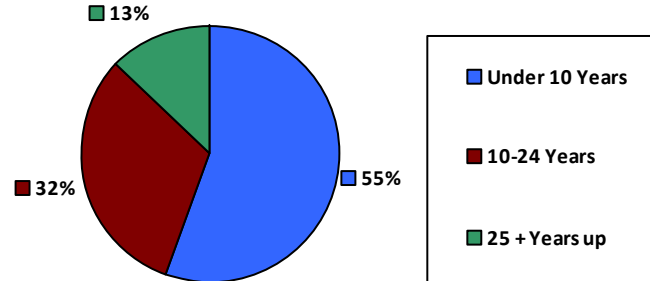
Gender

M	25,606	54.1%
F	21,718	45.9%

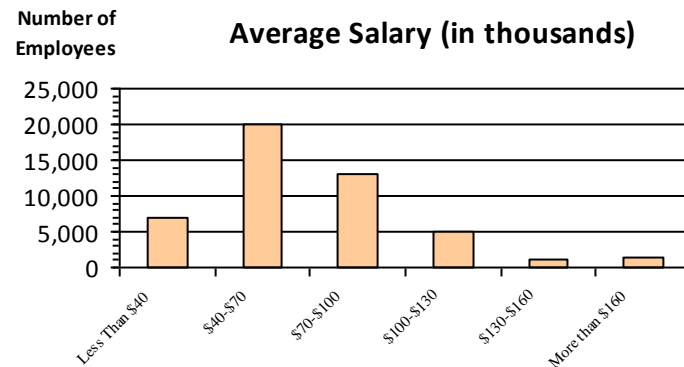
Age

<35	7,173	15.2%
35-54	26,895	56.8%
55+	13,257	28.0%

Length of Service



Average Salary (in thousands)



Educational Attainment

HS or Below	13,950	29.5%
Occupational Program	1,905	4.0%
Between HS and Bachelors	9,763	20.6%
Bachelors + Post Bachelors	13,611	28.8%
Masters and Post Grad	6,299	13.3%
Doctorate and Post Doc	1,773	3.7%

Type of Employment²

Administrative	14,573	30.8%
Professional	12,434	26.3%
Technical	9,660	20.4%
Clerical	3,304	7.0%
Other White Collar	1,760	3.7%
Blue Collar	5,591	11.8%

All data unless otherwise noted is provided by the US Office of Personnel Management for the December 2015 reporting period. ¹Non-Federal Workers Data calculated from the US Bureau of Labor Statistics 2015 Annual Averages https://www.bls.gov/news.release/archives/vet_03222016.pdf. ²Employment categories consistent with the definitions given by the US Office of Personnel Management "Introduction to the Position Classification Standards" 2009. For a description of the employment categories, refer to <http://www.opm.gov/policy-data-oversight/classification-qualifications/classifying-general-schedule-positions/positionclassificationintro.pdf>.

Who are the Civilian Federal Employees in North Carolina - 2014

Federal Workers in North Carolina: 46,003

Percentage Who Are Veterans: 41.73%

Non-Federal Workers in North Carolina: 4,312,000¹

Percentage Who Are Veterans: 8.05%¹

Five Largest Federal Employers

VA: 11,014



Army: 9,962



Navy: 7,333



DHS: 2,632



Defense: 2,614



Race and Ethnicity

White, non-Hispanic	30,047	65.3%
Black/African American, non-Hispanic	11,876	25.8%
Hispanic or Latino	1,818	4.0%
Asian, non-Hispanic	1,177	2.6%
Two or more races	489	1.1%
American Indian and Alaska Native	517	1.1%
Native Hawaiian and Other Pacific Islander	75	0.2%

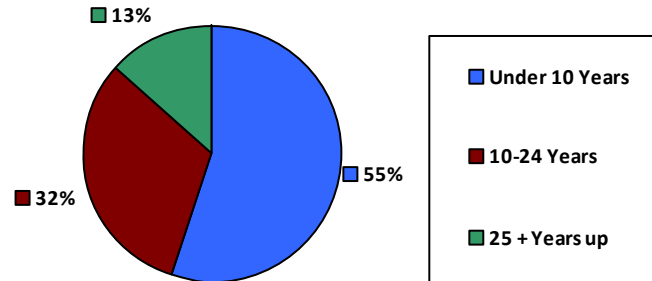
Gender

M	25,029	54.4%
F	20,974	45.6%

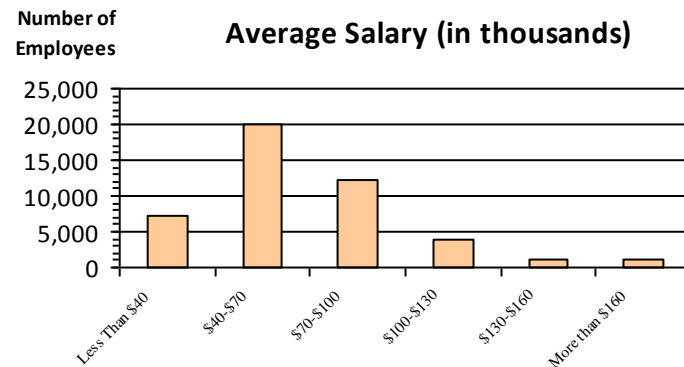
Age

<35	6,864	14.9%
35-54	26,322	57.2%
55+	12,817	27.9%

Length of Service



Average Salary (in thousands)



Educational Attainment

HS or Below	14,158	30.8%
Occupational Program	1,813	3.9%
Between HS and Bachelors	9,552	20.8%
Bachelors + Post Bachelors	12,967	28.2%
Masters and Post Grad	5,836	12.7%
Doctorate and Post Doc	1,643	3.6%

Type of Employment²

Administrative	14,302	31.1%
Professional	11,798	25.6%
Technical	9,387	20.4%
Clerical	3,191	6.9%
Other White Collar	1,753	3.8%
Blue Collar	5,569	12.1%

All data unless otherwise noted is provided by the US Office of Personnel Management for the December 2014 reporting period. ¹Non-Federal Workers Data calculated from the US Bureau of Labor Statistics 2014 Annual Averages https://www.bls.gov/news.release/archives/vet_03182015.pdf. ²Employment categories consistent with the definitions given by the US Office of Personnel Management "Introduction to the Position Classification Standards" 2009. For a description of the employment categories, refer to <http://www.opm.gov/policy-data-oversight/classification-qualifications/classifying-general-schedule-positions/positionclassificationintro.pdf>.

Who are the Civilian Federal Employees in North Carolina - 2013

Federal Workers in North Carolina: 45,504

Percentage Who Are Veterans: 40.88%

Non-Federal Workers in North Carolina: 4,270,000 ¹

Percentage Who Are Veterans: 8.97% ¹

Five Largest Federal Employers

VA: 10,505



Army: 9,998



Navy: 7,296



DHS: 2,638



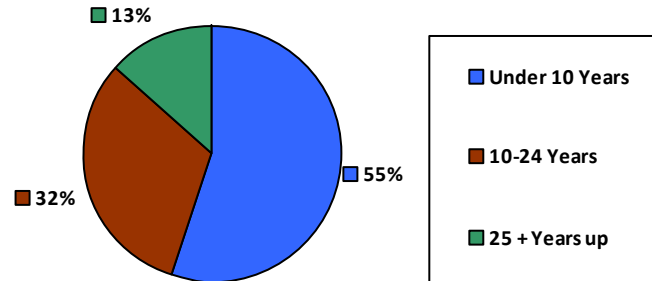
Defense: 2,610



Race and Ethnicity

White, non-Hispanic	29,859	65.6%
Black/African American, non-Hispanic	11,724	25.8%
Hispanic or Latino	1,756	3.9%
Asian, non-Hispanic	1,139	2.5%
Two or more races	431	0.9%
American Indian and Alaska Native	511	1.1%
Native Hawaiian and Other Pacific Islander	73	0.2%

Length of Service



Educational Attainment

HS or Below	14,314	31.5%
Occupational Program	1,796	3.9%
Between HS and Bachelors	9,558	21.0%
Bachelors + Post Bachelors	12,655	27.8%
Masters and Post Grad	5,571	12.2%
Doctorate and Post Doc	1,578	3.5%

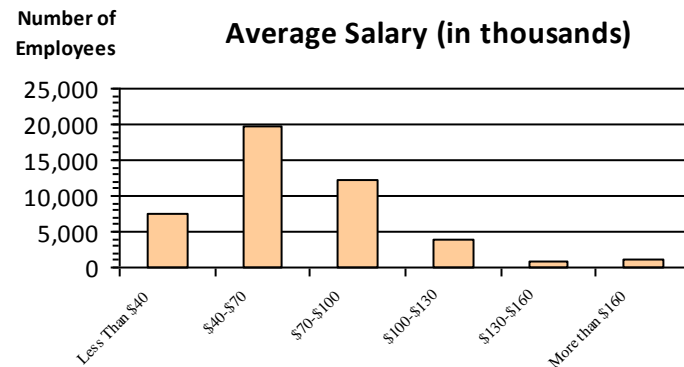
Gender

M	24,736	54.4%
F	20,768	45.6%

Age

<35	6,907	15.2%
35-54	26,072	57.3%
55+	12,525	27.5%

Average Salary (in thousands)



Type of Employment ²

Administrative	14,142	31.1%
Professional	11,574	25.4%
Technical	8,929	19.6%
Clerical	3,572	7.8%
Other White Collar	1,785	3.9%
Blue Collar	5,499	12.1%

All data unless otherwise noted is provided by the US Office of Personnel Management for the December 2013 reporting period. ¹Non-Federal Workers Data calculated from the US Bureau of Labor Statistics 2013 Annual Averages https://www.bls.gov/news.release/archives/vet_03202014.pdf. ²Employment categories consistent with the definitions given by the US Office of Personnel Management "Introduction to the Position Classification Standards" 2009. For a description of the employment categories, refer to <http://www.opm.gov/policy-data-oversight/classification-qualifications/classifying-general-schedule-positions/positionclassificationintro.pdf>.