

Who are the Civilian Federal Employees in

New York - 2021

Federal Workers in New York: 69,002

Percentage Who Are Veterans: 18.75%

Non-Federal Workers in New York: 8,409,000¹

Percentage Who Are Veterans: 2.85%¹

Five Largest Federal Employers

VA: 18,701



DHS: 12,057



Army: 7,211



Treasury: 6,533



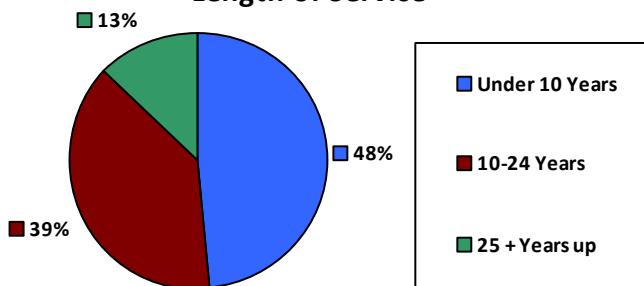
Justice: 5,722



Race and Ethnicity

White, non-Hispanic	43,708	63.3%
Black/African American, non-Hispanic	11,383	16.5%
Hispanic or Latino	7,417	10.7%
Asian, non-Hispanic	5,000	7.2%
Two or more races	794	1.2%
American Indian and Alaska Native	452	0.7%
Native Hawaiian and Other Pacific Islander	95	0.1%

Length of Service



Educational Attainment

HS or Below	21,384	31.0%
Occupational Program	1,395	2.0%
Between HS and Bachelors	12,229	17.7%
Bachelors + Post Bachelors	22,670	32.9%
Masters and Post Grad	9,284	13.4%
Doctorate and Post Doc	1,902	2.8%

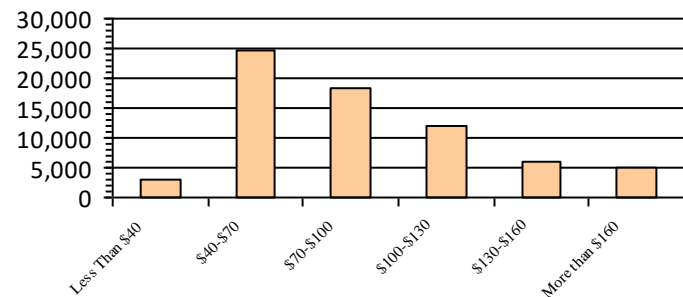
Gender

M	36,307	52.6%
F	32,695	47.4%

Age

<35	14,130	20.5%
35-54	35,830	51.9%
55+	19,042	27.6%

Average Salary (in thousands)



Type of Employment²

Administrative	17,155	24.9%
Professional	14,582	21.1%
Technical	3,486	5.1%
Clerical	2,504	3.6%
Other White Collar	5,109	7.4%
Blue Collar	5,161	7.5%

All data unless otherwise noted is provided by the US Office of Personnel Management for the December 2015 reporting period. ¹Non-Federal Workers Data calculated from the US Bureau of Labor Statistics 2015 Annual Averages https://www.bls.gov/news.release/archives/vet_03222016.pdf. ²Employment categories consistent with the definitions given by the US Office of Personnel Management "Introduction to the Position Classification Standards" 2009. For a description of the employment categories, refer to <http://www.opm.gov/policy-data-oversight/classification-qualifications/classifying-general-schedule-positions/positionclassificationintro.pdf>.

Who are the Civilian Federal Employees in

New York - 2020

Federal Workers in New York: 69,411

Percentage Who Are Veterans: 19.32%

Non-Federal Workers in New York: 8,290,000¹

Percentage Who Are Veterans: 3.09%¹

Five Largest Federal Employers

VA: 19,040



DHS: 12,116



Army: 7,259



Treasury: 6,516



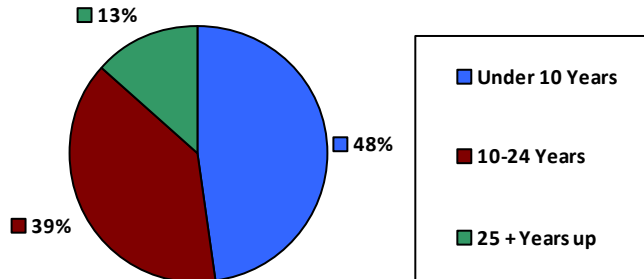
Justice: 5,708



Race and Ethnicity

White, non-Hispanic	44,105	63.5%
Black/African American, non-Hispanic	11,532	16.6%
Hispanic or Latino	7,467	10.8%
Asian, non-Hispanic	4,796	6.9%
Two or more races	770	1.1%
American Indian and Alaska Native	440	0.6%
Native Hawaiian and Other Pacific Islander	109	0.2%

Length of Service



Educational Attainment

HS or Below	21,185	30.5%
Occupational Program	1,464	2.1%
Between HS and Bachelors	12,534	18.1%
Bachelors + Post Bachelors	22,888	33.0%
Masters and Post Grad	9,350	13.5%
Doctorate and Post Doc	1,870	2.7%

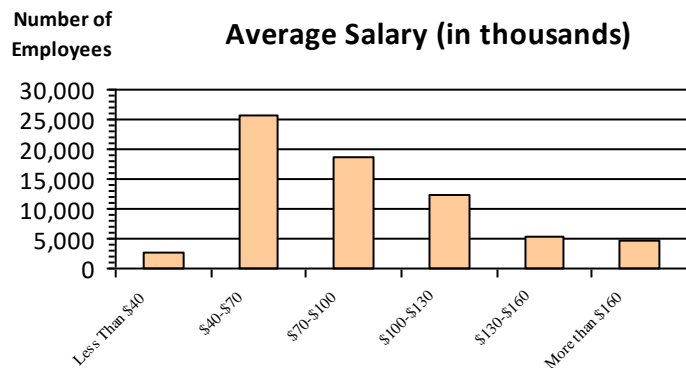
Gender

M	36,638	52.8%
F	32,773	47.2%

Age

<35	14,310	20.6%
35-54	35,797	51.6%
55+	19,304	27.8%

Average Salary (in thousands)



Type of Employment²

Administrative	26,346	38.0%
Professional	16,997	24.5%
Technical	14,815	21.3%
Clerical	3,523	5.1%
Other White Collar	2,544	3.7%
Blue Collar	5,161	7.4%

All data unless otherwise noted is provided by the US Office of Personnel Management for the December 2015 reporting period. ¹Non-Federal Workers Data calculated from the US Bureau of Labor Statistics 2015 Annual Averages https://www.bls.gov/news.release/archives/vet_03222016.pdf. ²Employment categories consistent with the definitions given by the US Office of Personnel Management "Introduction to the Position Classification Standards" 2009. For a description of the employment categories, refer to <http://www.opm.gov/policy-data-oversight/classification-qualifications/classifying-general-schedule-positions/positionclassificationintro.pdf>.

Who are the Civilian Federal Employees in

New York - 2019

Federal Workers in New York: 69,409

Percentage Who Are Veterans: 19.61%

Non-Federal Workers in New York: 9,016,000¹

Percentage Who Are Veterans: 3.53%¹

Five Largest Federal Employers

VA: 19,040



DHS: 12,314



Army: 7,091



Treasury: 6,375



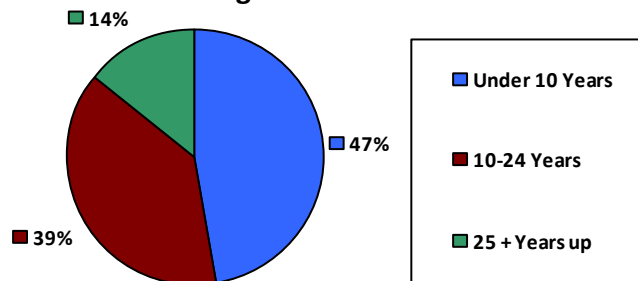
Justice: 5,750



Race and Ethnicity

White, non-Hispanic	44,460	64.0%
Black/African American, non-Hispanic	11,660	16.8%
Hispanic or Latino	7,334	10.6%
Asian, non-Hispanic	4,646	6.7%
Two or more races	701	1.0%
American Indian and Alaska Native	435	0.6%
Native Hawaiian and Other Pacific Islander	106	0.2%

Length of Service



Educational Attainment

HS or Below	19,882	28.6%
Occupational Program	2,478	3.6%
Between HS and Bachelors	13,083	18.8%
Bachelors + Post Bachelors	22,934	33.0%
Masters and Post Grad	8,973	12.9%
Doctorate and Post Doc	1,948	2.8%

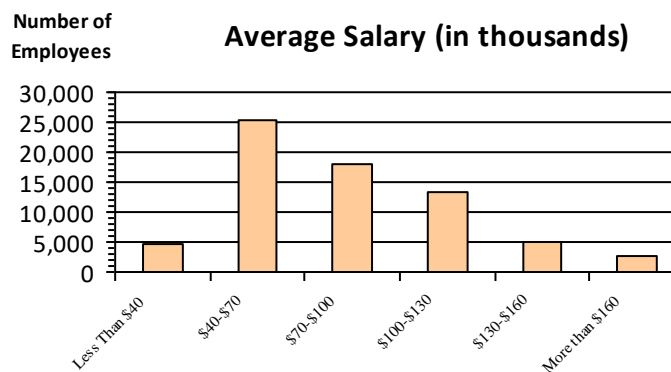
Gender

M	36,772	53.0%
F	32,637	47.0%

Age

<35	14,374	20.7%
35-54	35,593	51.3%
55+	19,442	28.0%

Average Salary (in thousands)



Type of Employment²

Administrative	25,755	37.1%
Professional	16,943	24.4%
Technical	14,602	21.0%
Clerical	4,258	6.1%
Other White Collar	2,602	3.7%
Blue Collar	5,225	7.5%

All data unless otherwise noted is provided by the US Office of Personnel Management for the December 2015 reporting period. ¹Non-Federal Workers Data calculated from the US Bureau of Labor Statistics 2015 Annual Averages https://www.bls.gov/news.release/archives/vet_03222016.pdf. ²Employment categories consistent with the definitions given by the US Office of Personnel Management "Introduction to the Position Classification Standards" 2009. For a description of the employment categories, refer to <http://www.opm.gov/policy-data-oversight/classification-qualifications/classifying-general-schedule-positions/positionclassificationintro.pdf>.

Who are the Civilian Federal Employees in

New York - 2018

Federal Workers in New York: 69,027

Percentage Who Are Veterans: 19.88%

Non-Federal Workers in New York: 9,201,000¹

Percentage Who Are Veterans: 3.21%¹

Five Largest Federal Employers

VA: 18,901



DHS: 12,312



Army: 6,944



Treasury: 6,452



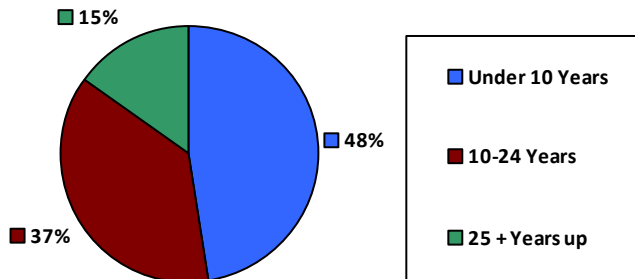
Justice: 5,796



Race and Ethnicity

White, non-Hispanic	44,512	64.5%
Black/African American, non-Hispanic	11,483	16.6%
Hispanic or Latino	7,312	10.6%
Asian, non-Hispanic	4,484	6.5%
Two or more races	658	1.0%
American Indian and Alaska Native	419	0.6%
Native Hawaiian and Other Pacific Islander	106	0.2%

Length of Service



Educational Attainment

HS or Below	18,794	27.2%
Occupational Program	2,582	3.7%
Between HS and Bachelors	13,612	19.7%
Bachelors + Post Bachelors	23,184	33.6%
Masters and Post Grad	8,878	12.8%
Doctorate and Post Doc	1,876	2.7%

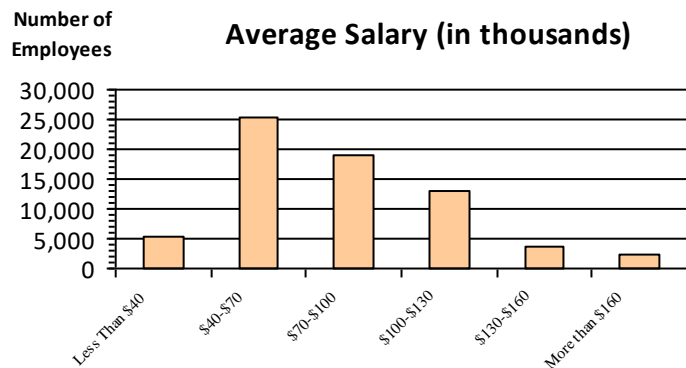
Gender

M	36,620	53.1%
F	32,331	46.9%

Age

<35	14,380	20.8%
35-54	35,369	51.2%
55+	19,278	27.9%

Average Salary (in thousands)



Type of Employment²

Administrative	25,382	36.8%
Professional	16,848	24.4%
Technical	14,937	21.6%
Clerical	4,110	6.0%
Other White Collar	2,489	3.6%
Blue Collar	5,242	7.6%

All data unless otherwise noted is provided by the US Office of Personnel Management for the December 2018 reporting period. ¹Non-Federal Workers Data calculated from the US Bureau of Labor Statistics 2018 Annual Averages www.bls.gov/news.release/pdf/vet.pdf. ²Employment categories consistent with the definitions given by the US Office of Personnel Management "Introduction to the Position Classification Standards" 2009. For a description of the employment categories, refer to www.opm.gov/policy-data-oversight/classification-qualifications/classifying-general-schedule-positions/positionclassificationintro.pdf.

Who are the Civilian Federal Employees in

New York - 2017

Federal Workers in New York: 68,704

Percentage Who Are Veterans: 20.02%

Non-Federal Workers in New York: 9,131,000¹

Percentage Who Are Veterans: 3.51%²

Five Largest Federal Employers

VA: 18,574



DHS: 12,236



Army: 6,767



Treasury: 6,211



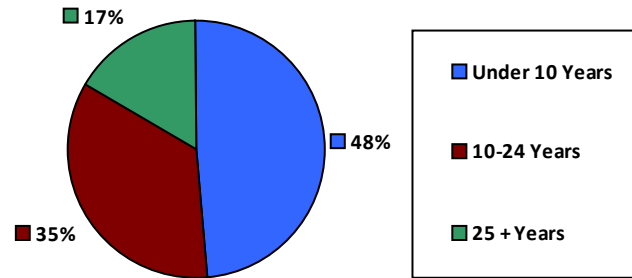
Justice: 5,906



Race and Ethnicity

White, non-Hispanic	44,584	64.9%
Black/African American, non-Hispanic	11,460	16.7%
Hispanic or Latino	7,120	10.4%
Asian, non-Hispanic	4,370	6.4%
Two or more races	607	0.9%
American Indian and Alaska Native	427	0.6%
Native Hawaiian and Other Pacific Islander	103	0.1%

Length of Service



Educational Attainment

HS or Below	17,911	26.1%
Occupational Program	2,705	3.9%
Between HS and Bachelors	13,864	20.2%
Bachelors + Post Bachelors	23,470	34.2%
Masters and Post Grad	8,841	12.9%
Doctorate and Post Doc	1,798	2.6%

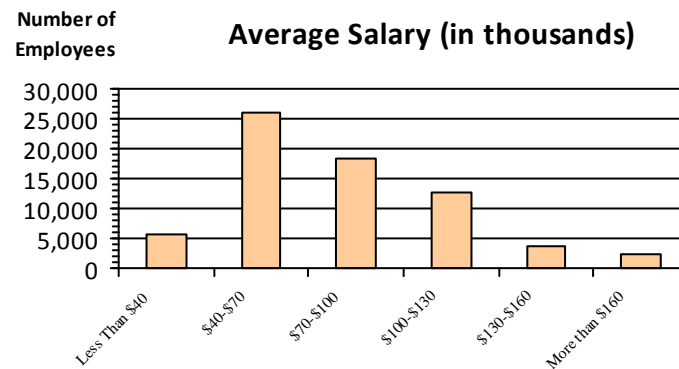
Gender

M	36,571	53.3%
F	32,081	46.7%

Age

<35	14,126	20.6%
35-54	35,235	51.3%
55+	19,343	28.2%

Average Salary (in thousands)



Type of Employment²

Administrative	25,301	36.8%
Professional	16,950	24.7%
Technical	14,747	21.5%
Clerical	4,127	6.0%
Other White Collar	2,456	3.6%
Blue Collar	5,117	7.4%

All data unless otherwise noted is provided by the US Office of Personnel Management for the December 2017 reporting period. Non-Federal Workers Data calculated from the US Bureau of Labor Statistics 2017 Annual Averages <https://www.bls.gov/news.release/vet.htm>.¹ Employment categories consistent with the definitions given by the US Office of Personnel Management "Introduction to the Position Classification Standards" (Revised: 2009), available at <https://www.opm.gov/policy-data-oversight/classification-qualifications/classifying-general-schedule-positions/positionclassificationintro.pdf>.²

Who are the Civilian Federal Employees in

New York - 2016

Federal Workers in New York: 70,192

Percentage Who Are Veterans: 20.09%

Non-Federal Workers in New York: 9,028,000¹

*Percentage Who Are Veterans: 3.71%*¹

Five Largest Federal Employers

VA: 18,730



DHS: 12,295



Treasury: 7,078



Army: 6,736



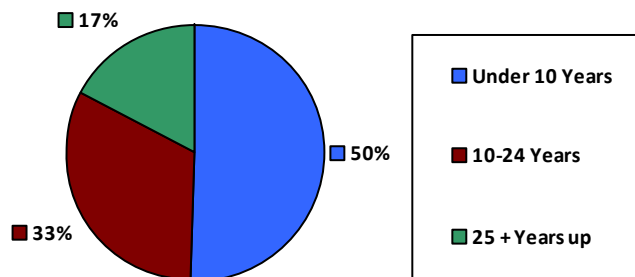
Justice: 6,006



Race and Ethnicity

White, non-Hispanic	45,932	65.4%
Black/African American, non-Hispanic	11,663	16.6%
Hispanic or Latino	7,120	10.1%
Asian, non-Hispanic	4,338	6.2%
Two or more races	568	0.8%
American Indian and Alaska Native	431	0.6%
Native Hawaiian and Other Pacific Islander	94	0.1%

Length of Service



Educational Attainment

HS or Below	18,483	26.3%
Occupational Program	2,838	4.0%
Between HS and Bachelors	14,211	20.2%
Bachelors + Post Bachelors	23,902	34.0%
Masters and Post Grad	8,911	12.7%
Doctorate and Post Doc	1,762	2.5%

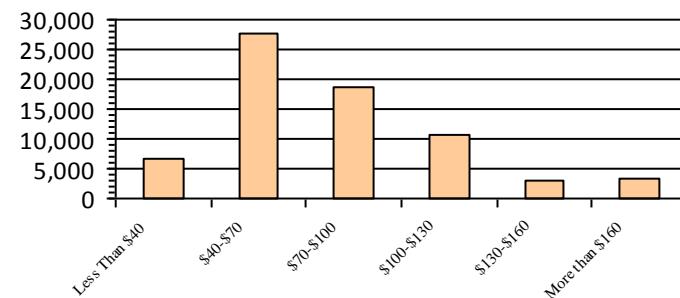
Gender

M	37,285	53.1%
F	32,891	46.9%

Age

<35	15,053	21.4%
35-54	35,801	51.0%
55+	19,338	27.5%

Average Salary (in thousands)



Type of Employment²

Administrative	25,403	36.2%
Professional	17,152	24.4%
Technical	15,461	22.0%
Clerical	4,487	6.4%
Other White Collar	2,522	3.6%
Blue Collar	5,165	7.4%

All data unless otherwise noted is provided by the US Office of Personnel Management for the December 2016 reporting period. ¹Non-Federal Workers Data calculated from the US Bureau of Labor Statistics 2015 Annual Averages https://www.bls.gov/news.release/archives/vet_03222016.pdf. ²Employment categories consistent with the definitions given by the US Office of Personnel Management "Introduction to the Position Classification Standards" 2009. For a description of the employment categories, refer to <http://www.opm.gov/policy-data-oversight/classification-qualifications/classifying-general-schedule-positions/positionclassificationintro.pdf>.

Who are the Civilian Federal Employees in

New York - 2015

Federal Workers in New York: 69,393

Percentage Who Are Veterans: 20.31%

Non-Federal Workers in New York: 9,030,000¹

Percentage Who Are Veterans: 4.12%¹

Five Largest Federal Employers

VA: 18,560



DHS: 11,748



Treasury: 7,095



Army: 6,808



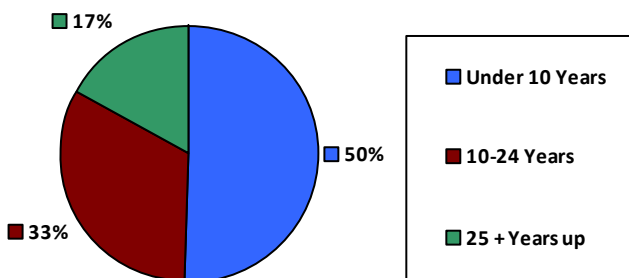
Justice: 5,865



Race and Ethnicity

White, non-Hispanic	46,145	66.5%
Black/African American, non-Hispanic	11,281	16.3%
Hispanic or Latino	6,735	9.7%
Asian, non-Hispanic	4,195	6.0%
Two or more races	485	0.7%
American Indian and Alaska Native	442	0.6%
Native Hawaiian and Other Pacific Islander	105	0.2%

Length of Service



Educational Attainment

HS or Below	18,072	26.0%
Occupational Program	2,922	4.2%
Between HS and Bachelors	14,175	20.4%
Bachelors + Post Bachelors	23,696	34.1%
Masters and Post Grad	8,780	12.6%
Doctorate and Post Doc	1,660	2.4%

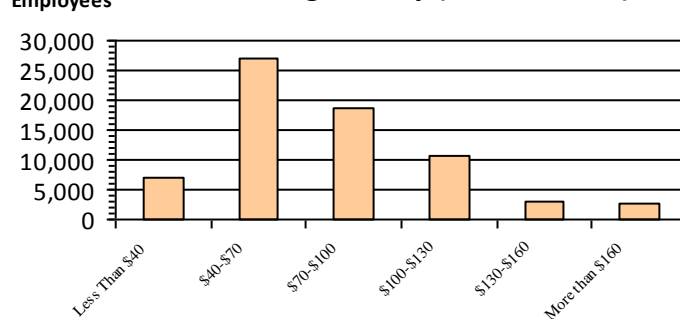
Gender

M	37,003	53.3%
F	32,390	46.7%

Age

<35	14,541	21.0%
35-54	35,865	51.7%
55+	18,987	27.4%

Average Salary (in thousands)



Type of Employment²

Administrative	25,112	36.2%
Professional	17,061	24.6%
Technical	15,517	22.4%
Clerical	4,011	5.8%
Other White Collar	2,496	3.6%
Blue Collar	5,192	7.5%

All data unless otherwise noted is provided by the US Office of Personnel Management for the December 2015 reporting period. ¹Non-Federal Workers Data calculated from the US Bureau of Labor Statistics 2015 Annual Averages https://www.bls.gov/news.release/archives/vet_03222016.pdf. ²Employment categories consistent with the definitions given by the US Office of Personnel Management "Introduction to the Position Classification Standards" 2009. For a description of the employment categories, refer to <http://www.opm.gov/policy-data-oversight/classification-qualifications/classifying-general-schedule-positions/positionclassificationintro.pdf>.

Who are the Civilian Federal Employees in

New York - 2014

Federal Workers in New York: 69,038

Percentage Who Are Veterans: 20.31%

Non-Federal Workers in New York: 8,842,000¹

Percentage Who Are Veterans: 4.18%¹

Five Largest Federal Employers

VA: 18,599



DHS: 11,460



Treasury: 6,974



Army: 6,795



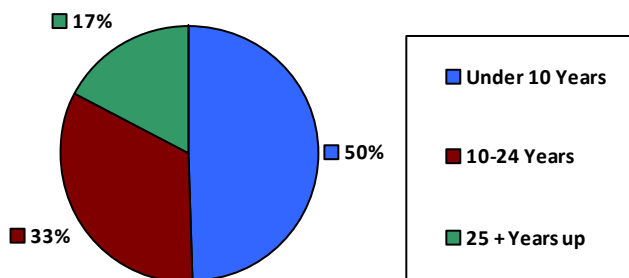
Justice: 5,909



Race and Ethnicity

White, non-Hispanic	46,182	66.9%
Black/African American, non-Hispanic	11,201	16.2%
Hispanic or Latino	6,612	9.6%
Asian, non-Hispanic	4,071	5.9%
Two or more races	445	0.6%
American Indian and Alaska Native	428	0.6%
Native Hawaiian and Other Pacific Islander	94	0.1%

Length of Service



Educational Attainment

HS or Below	17,915	25.9%
Occupational Program	2,978	4.3%
Between HS and Bachelors	14,272	20.7%
Bachelors + Post Bachelors	23,561	34.1%
Masters and Post Grad	8,607	12.5%
Doctorate and Post Doc	1,586	2.3%

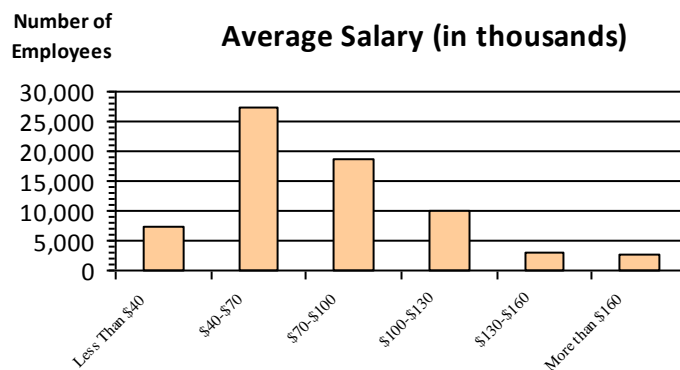
Gender

M	36,815	53.3%
F	32,223	46.7%

Age

<35	14,336	20.8%
35-54	35,875	52.0%
55+	18,827	27.3%

Average Salary (in thousands)



Type of Employment²

Administrative	25,015	36.2%
Professional	16,930	24.5%
Technical	15,532	22.5%
Clerical	3,792	5.5%
Other White Collar	2,469	3.6%
Blue Collar	5,296	7.7%

All data unless otherwise noted is provided by the US Office of Personnel Management for the December 2014 reporting period. ¹Non-Federal Workers Data calculated from the US Bureau of Labor Statistics 2014 Annual Averages https://www.bls.gov/news.release/archives/vet_03182015.pdf. ²Employment categories consistent with the definitions given by the US Office of Personnel Management "Introduction to the Position Classification Standards" 2009. For a description of the employment categories, refer to <http://www.opm.gov/policy-data-oversight/classification-qualifications/classifying-general-schedule-positions/positionclassificationintro.pdf>.

Who are the Civilian Federal Employees in

New York - 2013

Federal Workers in New York: 69,766

Percentage Who Are Veterans: 20.02%

Non-Federal Workers in New York: 8,825,000¹

Percentage Who Are Veterans: 4.19%¹

Five Largest Federal Employers

VA: 18,311



DHS: 11,883



Treasury: 7,449



Army: 6,871



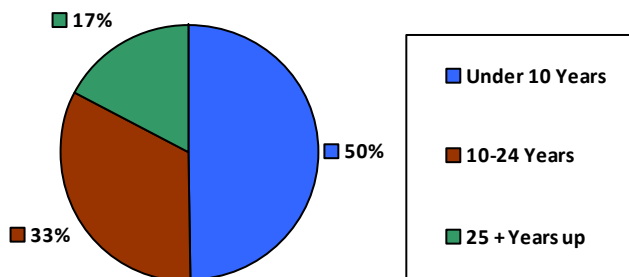
Justice: 5,888



Race and Ethnicity

White, non-Hispanic	47,124	67.5%
Black/African American, non-Hispanic	11,163	16.0%
Hispanic or Latino	6,620	9.5%
Asian, non-Hispanic	3,954	5.7%
Two or more races	417	0.6%
American Indian and Alaska Native	408	0.6%
Native Hawaiian and Other Pacific Islander	70	0.1%

Length of Service



Educational Attainment

HS or Below	18,350	26.3%
Occupational Program	3,026	4.3%
Between HS and Bachelors	14,660	21.0%
Bachelors + Post Bachelors	23,532	33.7%
Masters and Post Grad	8,469	12.1%
Doctorate and Post Doc	1,560	2.2%

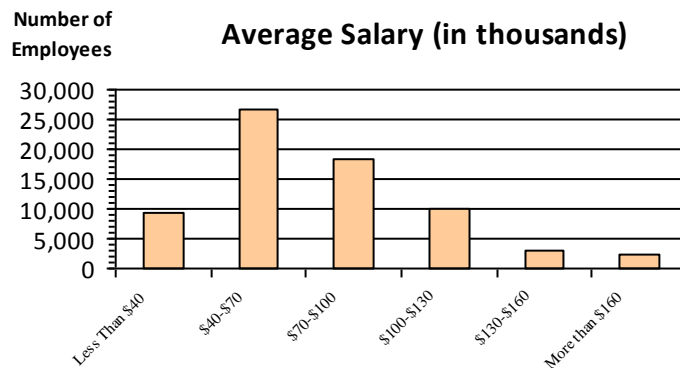
Gender

M	37,346	53.5%
F	32,420	46.5%

Age

<35	14,612	20.9%
35-54	36,191	51.9%
55+	18,963	27.2%

Average Salary (in thousands)



Type of Employment²

Administrative	24,971	35.8%
Professional	16,775	24.0%
Technical	14,531	20.8%
Clerical	5,548	8.0%
Other White Collar	2,510	3.6%
Blue Collar	5,425	7.8%

All data unless otherwise noted is provided by the US Office of Personnel Management for the December 2013 reporting period. ¹Non-Federal Workers Data calculated from the US Bureau of Labor Statistics 2013 Annual Averages https://www.bls.gov/news.release/archives/vet_03202014.pdf. ²Employment categories consistent with the definitions given by the US Office of Personnel Management "Introduction to the Position Classification Standards" 2009. For a description of the employment categories, refer to <http://www.opm.gov/policy-data-oversight/classification-qualifications/classifying-general-schedule-positions/positionclassificationintro.pdf>.