

Who are the Civilian Federal Employees in New Mexico - 2021

Federal Workers in New Mexico: 24,808

Percentage Who Are Veterans: 26.60%

Non-Federal Workers in New Mexico: 867,000¹

Percentage Who Are Veterans: 8.07%¹

Five Largest Federal Employers

Air Force: 3,755



HHS: 3,493



DOI: 3,473



VA: 3,152



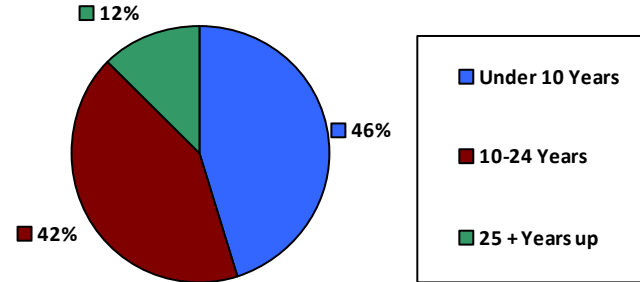
Agriculture: 2,383



Race and Ethnicity

White, non-Hispanic	11,328	45.7%
Black/African American, non-Hispanic	951	3.8%
Hispanic or Latino	6,524	26.3%
Asian, non-Hispanic	534	2.2%
Two or more races	417	1.7%
American Indian and Alaska Native	4,849	19.5%
Native Hawaiian and Other Pacific Islander	68	0.3%

Length of Service



Educational Attainment

HS or Below	7,248	29.2%
Occupational Program	777	3.1%
Between HS and Bachelors	5,263	21.2%
Bachelors + Post Bachelors	6,904	27.8%
Masters and Post Grad	3,667	14.8%
Doctorate and Post Doc	846	3.4%

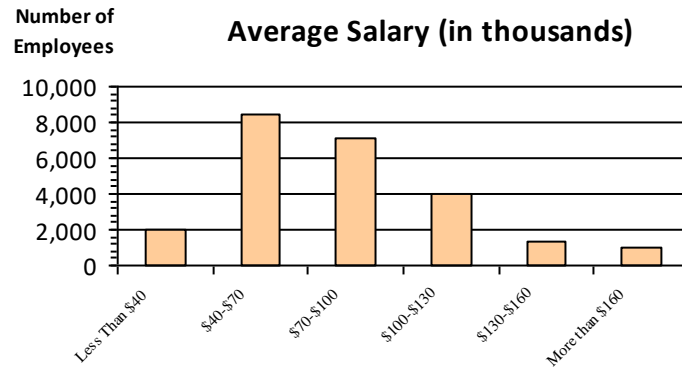
Gender

M	13,611	54.9%
F	11,197	45.1%

Age

<35	4,265	17.2%
35-54	13,065	52.7%
55+	7,478	30.1%

Average Salary (in thousands)



Type of Employment²

Administrative	7,172	28.9%
Professional	4,929	19.9%
Technical	1,405	5.7%
Clerical	1,968	7.9%
Other White Collar	1,727	7.0%
Blue Collar	1,518	6.1%

All data unless otherwise noted is provided by the US Office of Personnel Management for the December 2015 reporting period. ¹Non-Federal Workers Data calculated from the US Bureau of Labor Statistics 2015 Annual Averages https://www.bls.gov/news.release/archives/vet_03222016.pdf. ²Employment categories consistent with the definitions given by the US Office of Personnel Management "Introduction to the Position Classification Standards" 2009. For a description of the employment categories, refer to <http://www.opm.gov/policy-data-oversight/classification-qualifications/classifying-general-schedule-positions/positionclassificationintro.pdf>.

Who are the Civilian Federal Employees in New Mexico - 2020

Federal Workers in New Mexico: 24,705

Percentage Who Are Veterans: 27.27%

Non-Federal Workers in New Mexico: 844,000¹

Percentage Who Are Veterans: 8.53%¹

Five Largest Federal Employers

Air Force: 3,765



DOI: 3,482



HHS: 3,264



VA: 3,163



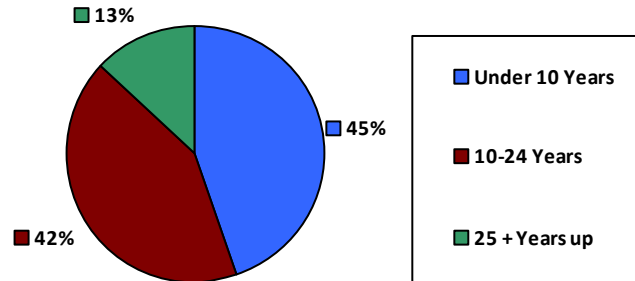
Agriculture: 2,383



Race and Ethnicity

White, non-Hispanic	11,433	46.3%
Black/African American, non-Hispanic	968	3.9%
Hispanic or Latino	6,531	26.4%
Asian, non-Hispanic	517	2.1%
Two or more races	405	1.6%
American Indian and Alaska Native	4,664	18.9%
Native Hawaiian and Other Pacific Islander	76	0.3%

Length of Service



Educational Attainment

HS or Below	7,066	28.6%
Occupational Program	781	3.2%
Between HS and Bachelors	5,310	21.5%
Bachelors + Post Bachelors	6,956	28.2%
Masters and Post Grad	3,605	14.6%
Doctorate and Post Doc	841	3.4%

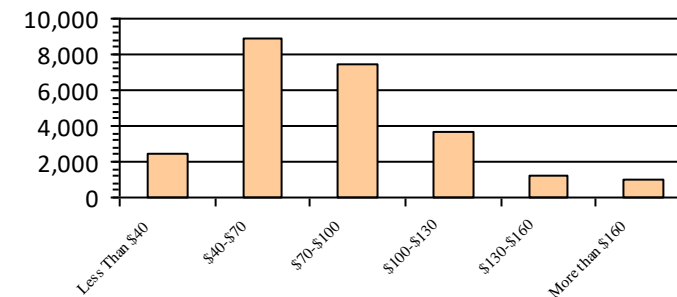
Gender

M	13,588	55.0%
F	11,117	45.0%

Age

<35	4,270	17.3%
35-54	12,987	52.6%
55+	7,448	30.1%

Average Salary (in thousands)



Type of Employment²

Administrative	7,487	30.3%
Professional	7,187	29.1%
Technical	4,991	20.2%
Clerical	1,497	6.1%
Other White Collar	2,011	8.1%
Blue Collar	1,518	6.1%

All data unless otherwise noted is provided by the US Office of Personnel Management for the December 2015 reporting period. ¹Non-Federal Workers Data calculated from the US Bureau of Labor Statistics 2015 Annual Averages https://www.bls.gov/news.release/archives/vet_03222016.pdf. ²Employment categories consistent with the definitions given by the US Office of Personnel Management "Introduction to the Position Classification Standards" 2009. For a description of the employment categories, refer to <http://www.opm.gov/policy-data-oversight/classification-qualifications/classifying-general-schedule-positions/positionclassificationintro.pdf>.

Who are the Civilian Federal Employees in New Mexico - 2019

Federal Workers in New Mexico: 24,703

Percentage Who Are Veterans: 27.45%

Non-Federal Workers in New Mexico: 904,000¹

Percentage Who Are Veterans: 8.52%¹

Five Largest Federal Employers

Air Force: 3,666



DOI: 3,515



HHS: 3,423



VA: 3,244



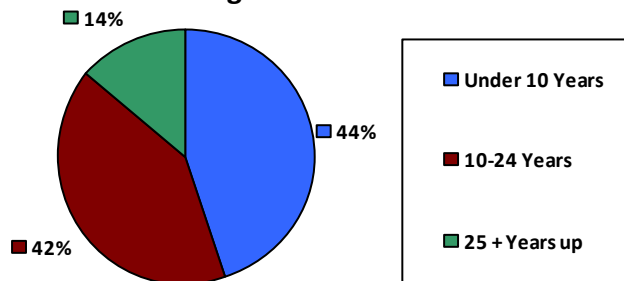
Agriculture: 2,311



Race and Ethnicity

White, non-Hispanic	11,301	45.7%
Black/African American, non-Hispanic	985	4.0%
Hispanic or Latino	6,507	26.3%
Asian, non-Hispanic	518	2.1%
Two or more races	383	1.6%
American Indian and Alaska Native	4,869	19.7%
Native Hawaiian and Other Pacific Islander	70	0.3%

Length of Service



Educational Attainment

HS or Below	6,941	28.1%
Occupational Program	1,026	4.2%
Between HS and Bachelors	5,476	22.2%
Bachelors + Post Bachelors	6,803	27.5%
Masters and Post Grad	3,508	14.2%
Doctorate and Post Doc	855	3.5%

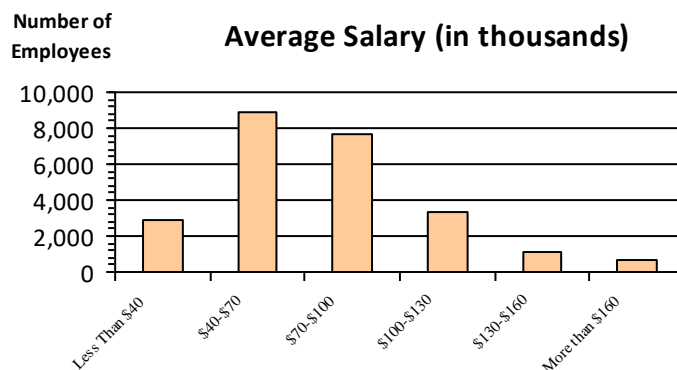
Gender

M	13,556	54.9%
F	11,145	45.1%

Age

<35	4,157	16.8%
35-54	12,877	52.1%
55+	7,669	31.0%

Average Salary (in thousands)



Type of Employment²

Administrative	7,308	29.6%
Professional	7,082	28.7%
Technical	4,961	20.1%
Clerical	1,631	6.6%
Other White Collar	1,973	8.0%
Blue Collar	1,731	7.0%

All data unless otherwise noted is provided by the US Office of Personnel Management for the December 2015 reporting period. ¹Non-Federal Workers Data calculated from the US Bureau of Labor Statistics 2015 Annual Averages https://www.bls.gov/news.release/archives/vet_03222016.pdf. ²Employment categories consistent with the definitions given by the US Office of Personnel Management "Introduction to the Position Classification Standards" 2009. For a description of the employment categories, refer to <http://www.opm.gov/policy-data-oversight/classification-qualifications/classifying-general-schedule-positions/positionclassificationintro.pdf>.

Who are the Civilian Federal Employees in New Mexico - 2018

Federal Workers in New Mexico: 24,338

Percentage Who Are Veterans: 27.87%

Non-Federal Workers in New Mexico: 894,000¹

*Percentage Who Are Veterans: 7.49%*¹

Five Largest Federal Employers

Air Force: 3,602



DOI: 3,519



HHS: 3,348



VA: 3,086



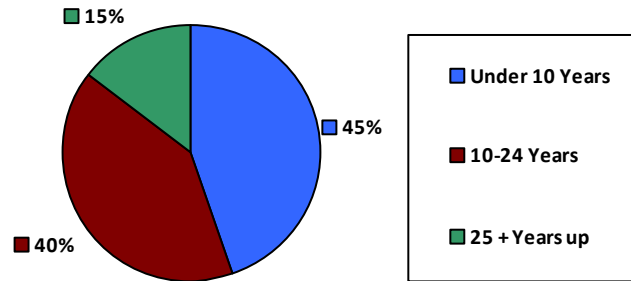
Army: 2,277



Race and Ethnicity

White, non-Hispanic	11,219	46.1%
Black/African American, non-Hispanic	928	3.8%
Hispanic or Latino	6,390	26.3%
Asian, non-Hispanic	476	2.0%
Two or more races	342	1.4%
American Indian and Alaska Native	4,873	20.0%
Native Hawaiian and Other Pacific Islander	65	0.3%

Length of Service



Educational Attainment

HS or Below	6,571	27.0%
Occupational Program	1,055	4.3%
Between HS and Bachelors	5,565	22.9%
Bachelors + Post Bachelors	6,827	28.0%
Masters and Post Grad	3,435	14.1%
Doctorate and Post Doc	797	3.3%

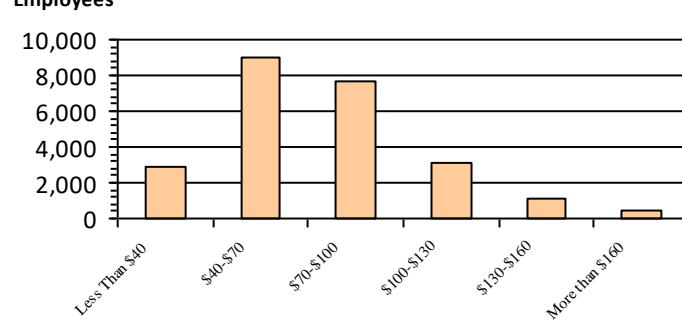
Gender

M	13,487	55.4%
F	10,840	44.6%

Age

<35	4,003	16.4%
35-54	12,791	52.6%
55+	7,544	31.0%

Average Salary (in thousands)



Type of Employment²

Administrative	7,107	29.2%
Professional	6,971	28.6%
Technical	5,016	20.6%
Clerical	1,491	6.1%
Other White Collar	2,017	8.3%
Blue Collar	1,719	7.1%

All data unless otherwise noted is provided by the US Office of Personnel Management for the December 2018 reporting period. ¹Non-Federal Workers Data calculated from the US Bureau of Labor Statistics 2018 Annual Averages www.bls.gov/news.release/pdf/vet.pdf. ²Employment categories consistent with the definitions given by the US Office of Personnel Management "Introduction to the Position Classification Standards" 2009. For a description of the employment categories, refer to www.opm.gov/policy-data-oversight/classification-qualifications/classifying-general-schedule-positions/positionclassificationintro.pdf.

Who are the Civilian Federal Employees in New Mexico - 2017

Federal Workers in New Mexico: 24,374

Percentage Who Are Veterans: 28.00%

Non-Federal Workers in New Mexico: 868,000¹

Percentage Who Are Veterans: 8.36%²

Five Largest Federal Employers

DOI: 3,693



Air Force: 3,542



HHS: 3,395



VA: 2,960



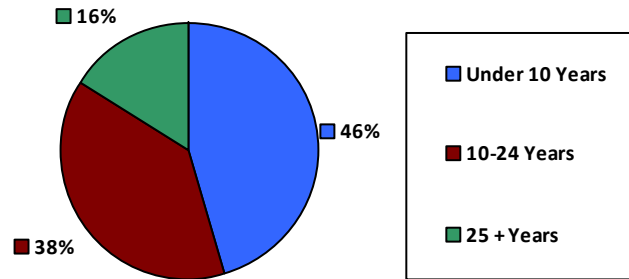
Agriculture: 2,375



Race and Ethnicity

White, non-Hispanic	11,221	46.0%
Black/African American, non-Hispanic	925	3.8%
Hispanic or Latino	6,332	26.0%
Asian, non-Hispanic	458	1.9%
Two or more races	311	1.3%
American Indian and Alaska Native	5,035	20.7%
Native Hawaiian and Other Pacific Islander	60	0.2%

Length of Service



Educational Attainment

HS or Below	6,468	26.5%
Occupational Program	1,102	4.5%
Between HS and Bachelors	5,682	23.3%
Bachelors + Post Bachelors	6,859	28.1%
Masters and Post Grad	3,382	13.9%
Doctorate and Post Doc	786	3.2%

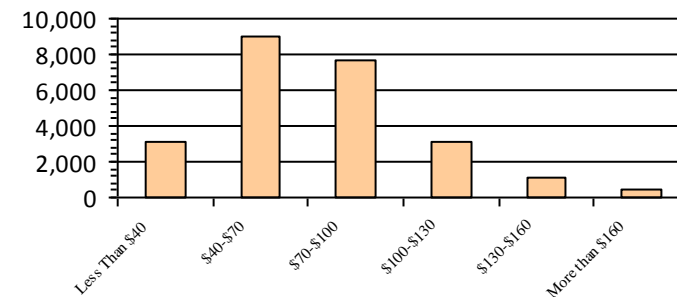
Gender

M	13,540	55.6%
F	10,828	44.4%

Age

<35	3,955	16.2%
35-54	12,904	52.9%
55+	7,515	30.8%

Average Salary (in thousands)



Type of Employment²

Administrative	7,023	28.8%
Professional	6,991	28.7%
Technical	5,109	21.0%
Clerical	1,475	6.1%
Other White Collar	1,989	8.2%
Blue Collar	1,782	7.3%

All data unless otherwise noted is provided by the US Office of Personnel Management for the December 2017 reporting period. Non-Federal Workers Data calculated from the US Bureau of Labor Statistics 2017 Annual Averages <https://www.bls.gov/news.release/vet.htm>.¹ Employment categories consistent with the definitions given by the US Office of Personnel Management "Introduction to the Position Classification Standards" (Revised: 2009), available at <https://www.opm.gov/policy-data-oversight/classification-qualifications/classifying-general-schedule-positions/positionclassificationintro.pdf>.²

Who are the Civilian Federal Employees in New Mexico - 2016

Federal Workers in New Mexico: 24,796

Percentage Who Are Veterans: 28.32%

Non-Federal Workers in New Mexico: 866,000¹

Percentage Who Are Veterans: 9.35%¹

Five Largest Federal Employers

DOI: 3,803



Air Force: 3,647



HHS: 3,390



VA: 2,939



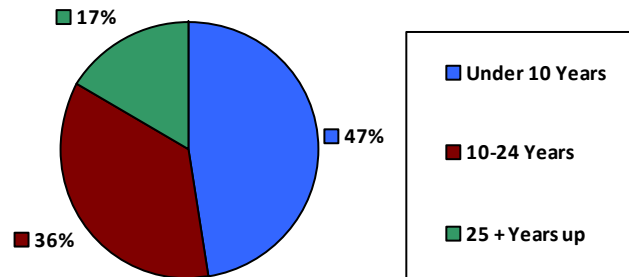
Agriculture: 2,409



Race and Ethnicity

White, non-Hispanic	11,552	46.6%
Black/African American, non-Hispanic	895	3.6%
Hispanic or Latino	6,443	26.0%
Asian, non-Hispanic	462	1.9%
Two or more races	290	1.2%
American Indian and Alaska Native	5,080	20.5%
Native Hawaiian and Other Pacific Islander	58	0.2%

Length of Service



Educational Attainment

HS or Below	6,613	26.7%
Occupational Program	1,148	4.6%
Between HS and Bachelors	5,853	23.6%
Bachelors + Post Bachelors	6,937	28.0%
Masters and Post Grad	3,415	13.8%
Doctorate and Post Doc	735	3.0%

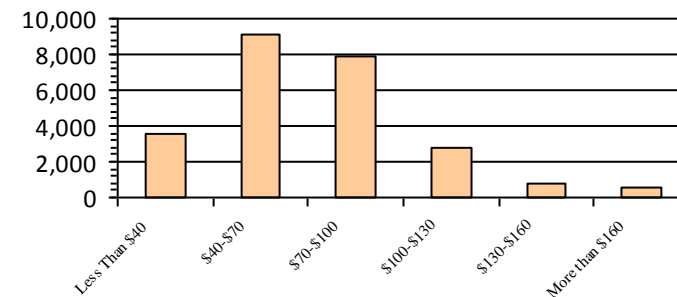
Gender

M	13,836	55.8%
F	10,957	44.2%

Age

<35	4,196	16.9%
35-54	13,111	52.9%
55+	7,489	30.2%

Average Salary (in thousands)



Type of Employment²

Administrative	7,137	28.8%
Professional	7,028	28.3%
Technical	5,220	21.0%
Clerical	1,524	6.1%
Other White Collar	2,038	8.2%
Blue Collar	1,843	7.4%

All data unless otherwise noted is provided by the US Office of Personnel Management for the December 2016 reporting period. ¹Non-Federal Workers Data calculated from the US Bureau of Labor Statistics 2015 Annual Averages https://www.bls.gov/news.release/archives/vet_03222016.pdf. ²Employment categories consistent with the definitions given by the US Office of Personnel Management "Introduction to the Position Classification Standards" 2009. For a description of the employment categories, refer to <http://www.opm.gov/policy-data-oversight/classification-qualifications/classifying-general-schedule-positions/positionclassificationintro.pdf>.

Who are the Civilian Federal Employees in New Mexico - 2015

Federal Workers in New Mexico: 24,817

Percentage Who Are Veterans: 28.26%

Non-Federal Workers in New Mexico: 858,000¹

Percentage Who Are Veterans: 10.61%¹

Five Largest Federal Employers

DOI: 3,804



Air Force: 3,589



HHS: 3,342



VA: 2,966



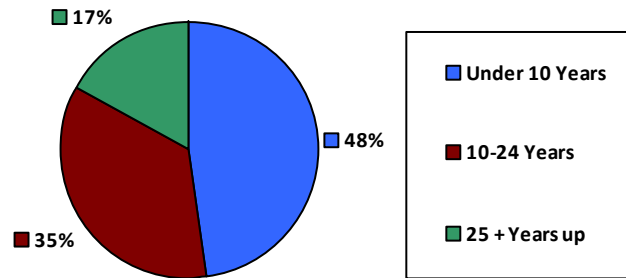
Agriculture: 2,415



Race and Ethnicity

White, non-Hispanic	11,624	46.8%
Black/African American, non-Hispanic	878	3.5%
Hispanic or Latino	6,497	26.2%
Asian, non-Hispanic	429	1.7%
Two or more races	261	1.1%
American Indian and Alaska Native	5,072	20.4%
Native Hawaiian and Other Pacific Islander	56	0.2%

Length of Service



Educational Attainment

HS or Below	6,557	26.4%
Occupational Program	1,196	4.8%
Between HS and Bachelors	5,943	23.9%
Bachelors + Post Bachelors	7,006	28.2%
Masters and Post Grad	3,316	13.3%
Doctorate and Post Doc	686	2.8%

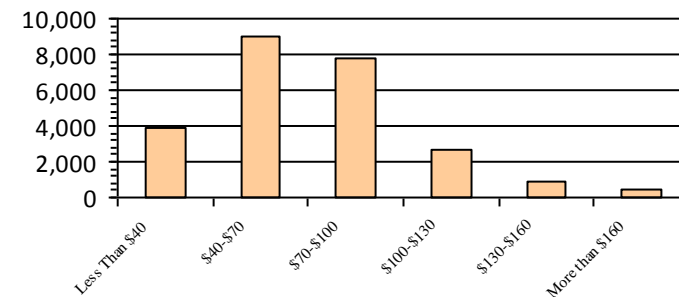
Gender

M	13,851	55.8%
F	10,965	44.2%

Age

<35	4,212	17.0%
35-54	13,233	53.3%
55+	7,372	29.7%

Average Salary (in thousands)



Type of Employment²

Administrative	6,945	28.0%
Professional	7,090	28.6%
Technical	5,321	21.4%
Clerical	1,501	6.0%
Other White Collar	2,111	8.5%
Blue Collar	1,841	7.4%

All data unless otherwise noted is provided by the US Office of Personnel Management for the December 2015 reporting period. ¹Non-Federal Workers Data calculated from the US Bureau of Labor Statistics 2015 Annual Averages https://www.bls.gov/news.release/archives/vet_03222016.pdf. ²Employment categories consistent with the definitions given by the US Office of Personnel Management "Introduction to the Position Classification Standards" 2009. For a description of the employment categories, refer to <http://www.opm.gov/policy-data-oversight/classification-qualifications/classifying-general-schedule-positions/positionclassificationintro.pdf>.

Who are the Civilian Federal Employees in New Mexico - 2014

Federal Workers in New Mexico: 24,629

Percentage Who Are Veterans: 27.85%

Non-Federal Workers in New Mexico: 846,000¹

*Percentage Who Are Veterans: 9.10%*¹

Five Largest Federal Employers

DOI: 3,833



Air Force: 3,434



HHS: 3,317



VA: 2,835



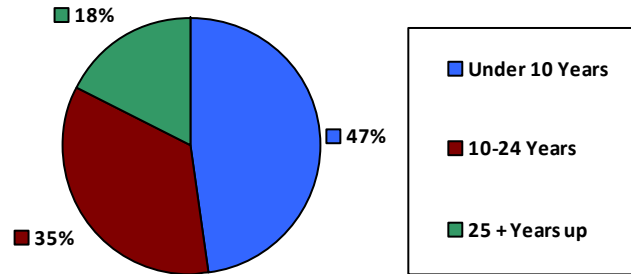
Army: 2,422



Race and Ethnicity

White, non-Hispanic	11,500	46.7%
Black/African American, non-Hispanic	815	3.3%
Hispanic or Latino	6,523	26.5%
Asian, non-Hispanic	429	1.7%
Two or more races	230	0.9%
American Indian and Alaska Native	5,081	20.6%
Native Hawaiian and Other Pacific Islander	51	0.2%

Length of Service



Educational Attainment

HS or Below	6,528	26.5%
Occupational Program	1,214	4.9%
Between HS and Bachelors	6,049	24.6%
Bachelors + Post Bachelors	6,889	28.0%
Masters and Post Grad	3,190	12.9%
Doctorate and Post Doc	652	2.6%

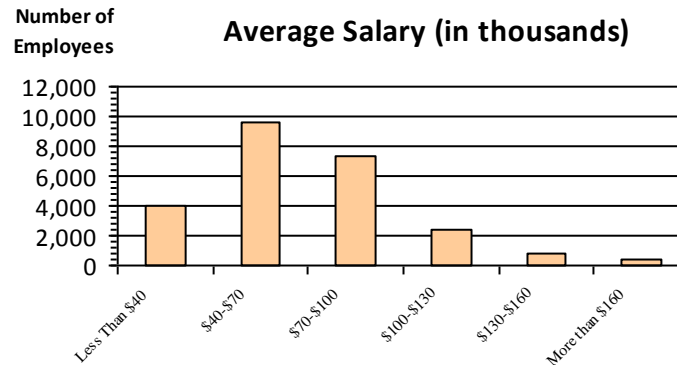
Gender

M	13,730	55.7%
F	10,899	44.2%

Age

<35	4,254	17.3%
35-54	13,103	53.2%
55+	7,272	29.5%

Average Salary (in thousands)



Type of Employment²

Administrative	6,787	27.6%
Professional	6,995	28.4%
Technical	5,338	21.7%
Clerical	1,474	6.0%
Other White Collar	2,219	9.0%
Blue Collar	1,812	7.4%

All data unless otherwise noted is provided by the US Office of Personnel Management for the December 2014 reporting period. ¹Non-Federal Workers Data calculated from the US Bureau of Labor Statistics 2014 Annual Averages https://www.bls.gov/news.release/archives/vet_03182015.pdf. ²Employment categories consistent with the definitions given by the US Office of Personnel Management "Introduction to the Position Classification Standards" 2009. For a description of the employment categories, refer to <http://www.opm.gov/policy-data-oversight/classification-qualifications/classifying-general-schedule-positions/positionclassificationintro.pdf>.

Who are the Civilian Federal Employees in New Mexico - 2013

Federal Workers in New Mexico: 24,967

Percentage Who Are Veterans: 27.59%

Non-Federal Workers in New Mexico: 846,000¹

*Percentage Who Are Veterans: 10.05%*¹

Five Largest Federal Employers

DOI: 4,037



Air Force: 3,484



HHS: 3,312



VA: 2,668



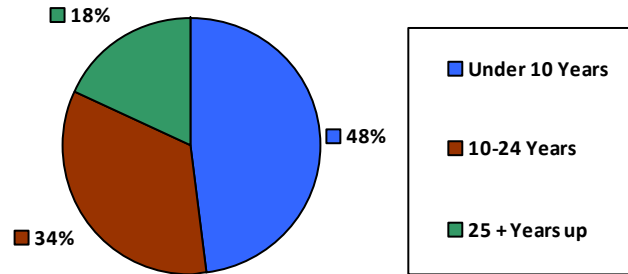
Army: 2,521



Race and Ethnicity

White, non-Hispanic	11,749	47.1%
Black/African American, non-Hispanic	820	3.3%
Hispanic or Latino	6,574	26.3%
Asian, non-Hispanic	423	1.7%
Two or more races	220	0.9%
American Indian and Alaska Native	5,133	20.6%
Native Hawaiian and Other Pacific Islander	48	0.2%

Length of Service



Educational Attainment

HS or Below	6,640	26.6%
Occupational Program	1,257	5.0%
Between HS and Bachelors	6,166	24.7%
Bachelors + Post Bachelors	6,989	28.0%
Masters and Post Grad	3,144	12.6%
Doctorate and Post Doc	626	2.5%

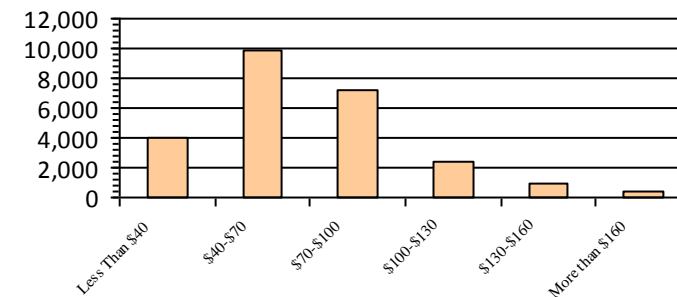
Gender

M	13,979	56.0%
F	10,988	44.0%

Age

<35	4,518	18.1%
35-54	13,245	53.0%
55+	7,204	28.9%

Average Salary (in thousands)



Type of Employment²

Administrative	6,938	27.8%
Professional	7,007	28.1%
Technical	5,349	21.4%
Clerical	1,482	5.9%
Other White Collar	2,336	9.4%
Blue Collar	1,853	7.4%

All data unless otherwise noted is provided by the US Office of Personnel Management for the December 2013 reporting period. ¹Non-Federal Workers Data calculated from the US Bureau of Labor Statistics 2013 Annual Averages https://www.bls.gov/news.release/archives/vet_03202014.pdf. ²Employment categories consistent with the definitions given by the US Office of Personnel Management "Introduction to the Position Classification Standards" 2009. For a description of the employment categories, refer to <http://www.opm.gov/policy-data-oversight/classification-qualifications/classifying-general-schedule-positions/positionclassificationintro.pdf>.