

Who are the Civilian Federal Employees in

New Jersey - 2022

Federal Workers in New Jersey: 27,923

Percentage Who Are Veterans: 20.23%

Non-Federal Workers in New Jersey: 4,456,000¹

Percentage Who Are Veterans: 2.54%¹

Five Largest Federal Employers

Army: 5,375



DHS: 4,822



VA: 4,243



Navy: 2,408



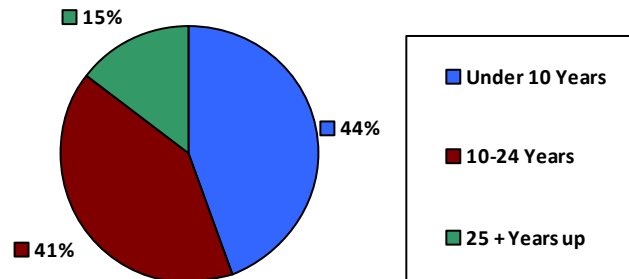
Justice: 2,198



Race and Ethnicity

| | | |
|--|--------|-------|
| White, non-Hispanic | 16,870 | 60.4% |
| Black/African American, non-Hispanic | 4,726 | 16.9% |
| Hispanic or Latino | 3,274 | 11.7% |
| Asian, non-Hispanic | 2,399 | 8.6% |
| Two or more races | 388 | 1.4% |
| American Indian and Alaska Native | 135 | 0.5% |
| Native Hawaiian and Other Pacific Islander | 53 | 0.2% |

Length of Service



Educational Attainment

| | | |
|----------------------------|--------|-------|
| HS or Below | 6,852 | 24.5% |
| Occupational Program | 563 | 2.0% |
| Between HS and Bachelors | 3,946 | 14.1% |
| Bachelors + Post Bachelors | 10,462 | 37.5% |
| Masters and Post Grad | 5,336 | 19.1% |
| Doctorate and Post Doc | 721 | 2.6% |

Gender

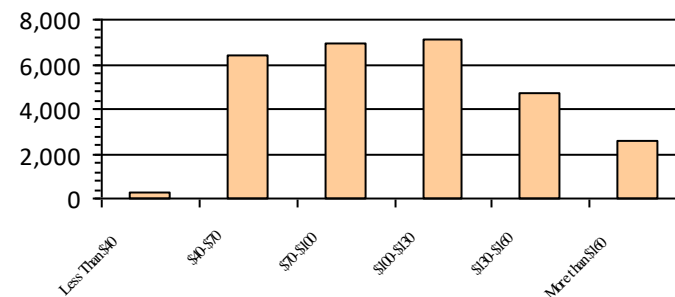
| | | |
|---|--------|-------|
| M | 16,985 | 60.8% |
| F | 10,938 | 39.2% |

Age

| | | |
|-------|--------|-------|
| <35 | 5,613 | 20.1% |
| 35-54 | 14,402 | 51.6% |
| 55+ | 7,908 | 28.3% |

Number of Employees

Average Salary (in thousands)



Type of Employment²

| | | |
|--------------------|--------|-------|
| Administrative | 11,160 | 40.0% |
| Professional | 9,320 | 33.4% |
| Technical | 3,583 | 12.8% |
| Clerical | 1,197 | 4.3% |
| Other White Collar | 924 | 3.3% |
| Blue Collar | 1,732 | 6.2% |

All data unless otherwise noted is provided by the US Office of Personnel Management for the December 2022 reporting period. ¹Non-Federal Workers Data calculated from the US Bureau of Labor Statistics 2022 Annual Averages <https://www.bls.gov/news.release/pdf/vet.pdf>. ²Employment categories consistent with the definitions given by the US Office of Personnel Management "Introduction to the Position Classification Standards" 2009. For a description of the employment categories, refer to <http://www.opm.gov/policy-data-oversight/classification-qualifications/classifying-general-schedule-positions/positionclassificationintro.pdf>.