

## Who are the Civilian Federal Employees in

# New Jersey - 2021

**Federal Workers in New Jersey: 27,511**

Percentage Who Are Veterans: 20.76%

**Non-Federal Workers in New Jersey: 4,108,000**<sup>1</sup>

Percentage Who Are Veterans: 3.04%<sup>1</sup>

### Five Largest Federal Employers

Army: 5,550



DHS: 4,735



VA: 4,036



Navy: 2,479



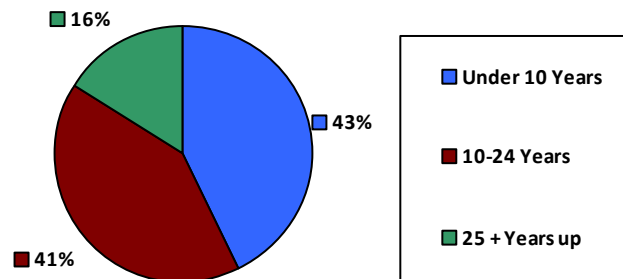
Justice: 2,207



### Race and Ethnicity

White, non-Hispanic	16,779	61.0%
Black/African American, non-Hispanic	4,642	16.9%
Hispanic or Latino	3,208	11.7%
Asian, non-Hispanic	2,257	8.2%
Two or more races	368	1.3%
American Indian and Alaska Native	138	0.5%
Native Hawaiian and Other Pacific Islander	53	0.2%

### Length of Service



### Educational Attainment

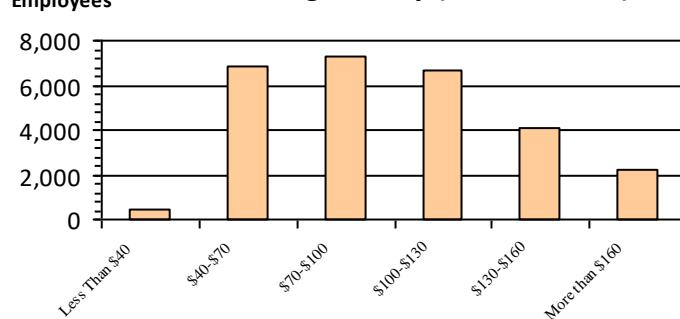
HS or Below	6,778	24.6%
Occupational Program	570	2.1%
Between HS and Bachelors	4,038	14.7%
Bachelors + Post Bachelors	10,261	37.3%
Masters and Post Grad	5,163	18.7%
Doctorate and Post Doc	648	2.4%

### Gender

### Age

M	16,979	61.7%	<35	5,704	20.7%
			35-54	13,894	50.5%
F	10,532	38.3%	55+	7,913	28.8%

### Average Salary (in thousands)



### Type of Employment<sup>2</sup>

Administrative	9,179	33.4%
Professional	3,814	13.9%
Technical	1,097	4.0%
Clerical	951	3.5%
Other White Collar	1,815	6.6%
Blue Collar	1,872	6.8%

All data unless otherwise noted is provided by the US Office of Personnel Management for the December 2015 reporting period. <sup>1</sup>Non-Federal Workers Data calculated from the US Bureau of Labor Statistics 2015 Annual Averages [https://www.bls.gov/news.release/archives/vet\\_03222016.pdf](https://www.bls.gov/news.release/archives/vet_03222016.pdf). <sup>2</sup>Employment categories consistent with the definitions given by the US Office of Personnel Management "Introduction to the Position Classification Standards" 2009. For a description of the employment categories, refer to <http://www.opm.gov/policy-data-oversight/classification-qualifications/classifying-general-schedule-positions/positionclassificationintro.pdf>.

## Who are the Civilian Federal Employees in

# New Jersey - 2020

**Federal Workers in New Jersey: 27,432**

Percentage Who Are Veterans: 21.19%

**Non-Federal Workers in New Jersey: 4,026,000**<sup>1</sup>

Percentage Who Are Veterans: 3.23%<sup>1</sup>

### Five Largest Federal Employers

Army: 5,463



DHS: 4,706



VA: 3,996



Navy: 2,511



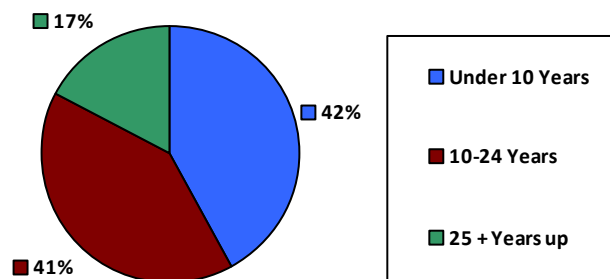
Justice: 2,241



### Race and Ethnicity

White, non-Hispanic	16,835	61.4%
Black/African American, non-Hispanic	4,691	17.1%
Hispanic or Latino	3,118	11.4%
Asian, non-Hispanic	2,193	8.0%
Two or more races	353	1.3%
American Indian and Alaska Native	133	0.5%
Native Hawaiian and Other Pacific Islander	52	0.2%

### Length of Service



### Educational Attainment

HS or Below	6,863	25.0%
Occupational Program	599	2.2%
Between HS and Bachelors	4,044	14.7%
Bachelors + Post Bachelors	10,114	36.9%
Masters and Post Grad	5,109	18.6%
Doctorate and Post Doc	638	2.3%

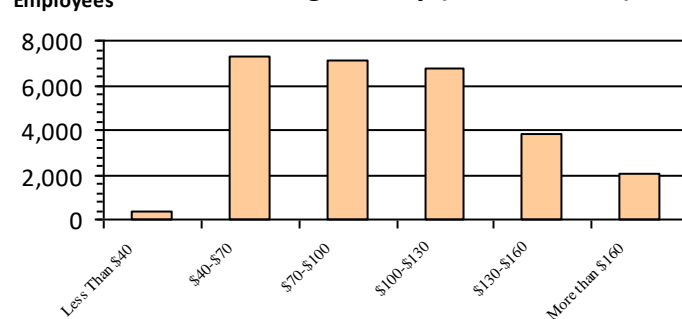
### Gender

M	17,036	62.1%
F	10,396	37.9%

### Age

<35	5,856	21.3%
35-54	13,626	49.7%
55+	7,950	29.0%

### Average Salary (in thousands)



### Type of Employment<sup>2</sup>

Administrative	10,531	38.4%
Professional	9,090	33.1%
Technical	3,820	13.9%
Clerical	1,158	4.2%
Other White Collar	955	3.5%
Blue Collar	1,872	6.8%

All data unless otherwise noted is provided by the US Office of Personnel Management for the December 2015 reporting period. <sup>1</sup>Non-Federal Workers Data calculated from the US Bureau of Labor Statistics 2015 Annual Averages [https://www.bls.gov/news.release/archives/vet\\_03222016.pdf](https://www.bls.gov/news.release/archives/vet_03222016.pdf). <sup>2</sup>Employment categories consistent with the definitions given by the US Office of Personnel Management "Introduction to the Position Classification Standards" 2009. For a description of the employment categories, refer to <http://www.opm.gov/policy-data-oversight/classification-qualifications/classifying-general-schedule-positions/positionclassificationintro.pdf>.

## Who are the Civilian Federal Employees in

# New Jersey - 2019

**Federal Workers in New Jersey: 26,861**

Percentage Who Are Veterans: 21.13%

**Non-Federal Workers in New Jersey: 4,320,000<sup>1</sup>**

Percentage Who Are Veterans: 2.82%<sup>1</sup>

### Five Largest Federal Employers

Army: 5,157



DHS: 4,679



VA: 4,003



Navy: 2,414



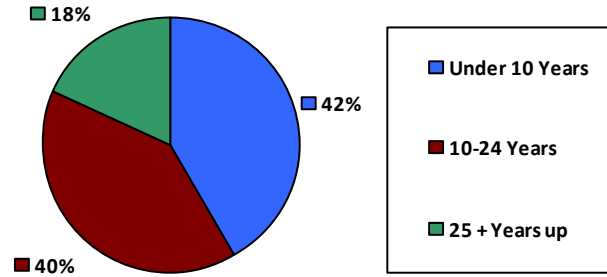
Justice: 2,205



### Race and Ethnicity

White, non-Hispanic	16,279	60.6%
Black/African American, non-Hispanic	4,700	17.5%
Hispanic or Latino	2,905	10.8%
Asian, non-Hispanic	2,072	7.7%
Two or more races	323	1.2%
American Indian and Alaska Native	133	0.5%
Native Hawaiian and Other Pacific Islander	57	0.2%

### Length of Service



### Educational Attainment

HS or Below	6,449	24.0%
Occupational Program	830	3.1%
Between HS and Bachelors	4,062	15.1%
Bachelors + Post Bachelors	9,891	36.8%
Masters and Post Grad	4,958	18.4%
Doctorate and Post Doc	631	2.3%

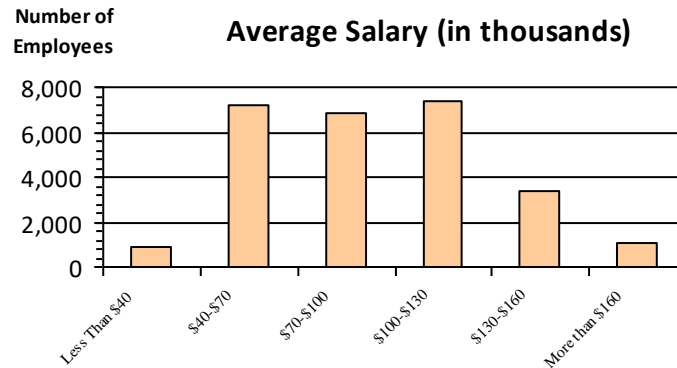
### Gender

M	16,674	62.1%
F	10,187	37.9%

### Age

<35	5,707	21.2%
35-54	13,240	49.3%
55+	7,914	29.5%

### Average Salary (in thousands)



### Type of Employment<sup>2</sup>

Administrative	10,115	37.7%
Professional	8,942	33.3%
Technical	3,732	13.9%
Clerical	1,328	4.9%
Other White Collar	912	3.4%
Blue Collar	1,828	6.8%

All data unless otherwise noted is provided by the US Office of Personnel Management for the December 2015 reporting period. <sup>1</sup>Non-Federal Workers Data calculated from the US Bureau of Labor Statistics 2015 Annual Averages [https://www.bls.gov/news.release/archives/vet\\_03222016.pdf](https://www.bls.gov/news.release/archives/vet_03222016.pdf). <sup>2</sup>Employment categories consistent with the definitions given by the US Office of Personnel Management "Introduction to the Position Classification Standards" 2009. For a description of the employment categories, refer to <http://www.opm.gov/policy-data-oversight/classification-qualifications/classifying-general-schedule-positions/positionclassificationintro.pdf>.

## Who are the Civilian Federal Employees in

# New Jersey - 2018

**Federal Workers in New Jersey: 26,384**

Percentage Who Are Veterans: 21.52%

**Non-Federal Workers in New Jersey: 4,235,000**<sup>1</sup>

Percentage Who Are Veterans: 2.41%<sup>1</sup>

### Five Largest Federal Employers

Army: 5,142



DHS: 4,513



VA: 3,915



Navy: 2,446



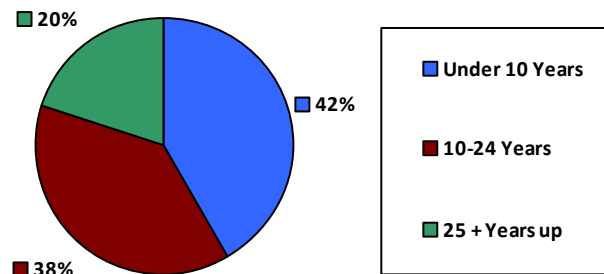
Justice: 2,167



### Race and Ethnicity

White, non-Hispanic	16,083	61.0%
Black/African American, non-Hispanic	4,630	17.5%
Hispanic or Latino	2,764	10.5%
Asian, non-Hispanic	2,007	7.6%
Two or more races	308	1.2%
American Indian and Alaska Native	127	0.5%
Native Hawaiian and Other Pacific Islander	52	0.2%

### Length of Service



### Educational Attainment

HS or Below	6,013	22.8%
Occupational Program	803	3.0%
Between HS and Bachelors	4,265	16.2%
Bachelors + Post Bachelors	9,778	37.1%
Masters and Post Grad	4,892	18.5%
Doctorate and Post Doc	606	2.3%

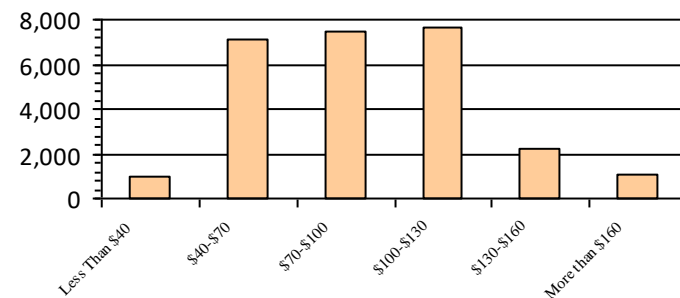
### Gender

M	16,445	62.3%
F	9,939	37.7%

### Age

<35	5,633	21.3%
35-54	13,080	49.6%
55+	7,671	29.1%

### Average Salary (in thousands)



### Type of Employment<sup>2</sup>

Administrative	9,989	37.9%
Professional	8,797	33.3%
Technical	3,676	13.9%
Clerical	1,175	4.5%
Other White Collar	867	3.3%
Blue Collar	1,874	7.1%

All data unless otherwise noted is provided by the US Office of Personnel Management for the December 2018 reporting period. <sup>1</sup>Non-Federal Workers Data calculated from the US Bureau of Labor Statistics 2018 Annual Averages [www.bls.gov/news.release/pdf/vet.pdf](http://www.bls.gov/news.release/pdf/vet.pdf). <sup>2</sup>Employment categories consistent with the definitions given by the US Office of Personnel Management "Introduction to the Position Classification Standards" 2009. For a description of the employment categories, refer to [www.opm.gov/policy-data-oversight/classification-qualifications/classifying-general-schedule-positions/positionclassificationintro.pdf](http://www.opm.gov/policy-data-oversight/classification-qualifications/classifying-general-schedule-positions/positionclassificationintro.pdf).

## Who are the Civilian Federal Employees in

# New Jersey - 2017

**Federal Workers in New Jersey: 26,460**

*Percentage Who Are Veterans: 21.43%*

**Non-Federal Workers in New Jersey: 4,227,000<sup>1</sup>**

*Percentage Who Are Veterans: 3.53%<sup>2</sup>*

### Five Largest Federal Employers

Army: 5,212



DHS: 4,538



VA: 3,788



Navy: 2,345



Justice: 2,192



### Race and Ethnicity

White, non-Hispanic	16,704	63.1%
Black/African American, non-Hispanic	4,601	17.4%
Hispanic or Latino	2,677	10.1%
Asian, non-Hispanic	2,016	7.6%
Two or more races	287	1.1%
American Indian and Alaska Native	120	0.5%
Native Hawaiian and Other Pacific Islander	49	0.2%

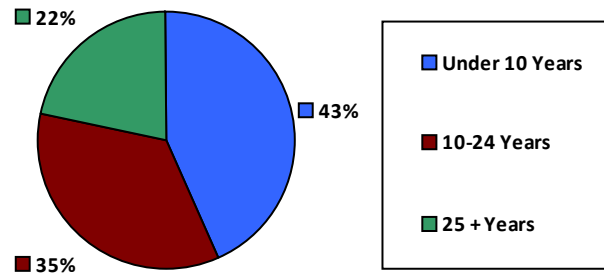
### Gender

M	16,548	62.5%
F	9,911	37.5%

### Age

<35	5,670	21.4%
35-54	13,183	49.8%
55+	7,607	28.7%

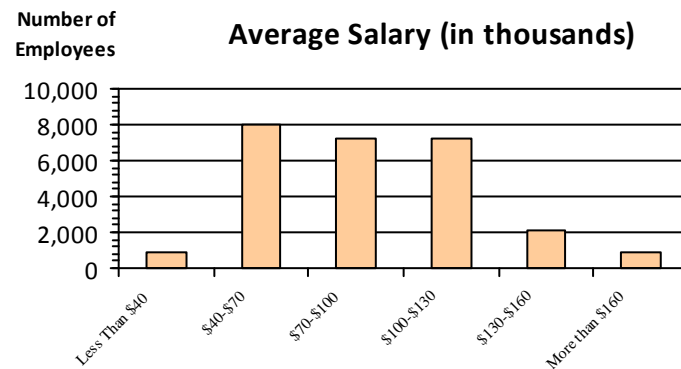
### Length of Service



### Educational Attainment

HS or Below	6,168	23.3%
Occupational Program	818	3.1%
Between HS and Bachelors	4,314	16.3%
Bachelors + Post Bachelors	9,786	37.0%
Masters and Post Grad	4,786	18.1%
Doctorate and Post Doc	562	2.1%

### Average Salary (in thousands)



### Type of Employment<sup>2</sup>

Administrative	10,021	37.9%
Professional	8,688	32.8%
Technical	3,808	14.4%
Clerical	1,150	4.3%
Other White Collar	872	3.3%
Blue Collar	1,921	7.3%

All data unless otherwise noted is provided by the US Office of Personnel Management for the December 2017 reporting period. Non-Federal Workers Data calculated from the US Bureau of Labor Statistics 2017 Annual Averages <https://www.bls.gov/news.release/vet.htm>.<sup>1</sup> Employment categories consistent with the definitions given by the US Office of Personnel Management "Introduction to the Position Classification Standards" (Revised: 2009), available at <https://www.opm.gov/policy-data-oversight/classification-qualifications/classifying-general-schedule-positions/positionclassificationintro.pdf>.<sup>2</sup>

## Who are the Civilian Federal Employees in

# New Jersey - 2016

**Federal Workers in New Jersey: 26,688**

*Percentage Who Are Veterans: 21.57%*

**Non-Federal Workers in New Jersey: 4,262,000**<sup>1</sup>

*Percentage Who Are Veterans: 3.71%*<sup>1</sup>

### Five Largest Federal Employers

Army: 5,219



DHS: 4,578



VA: 3,713



Navy: 2,283



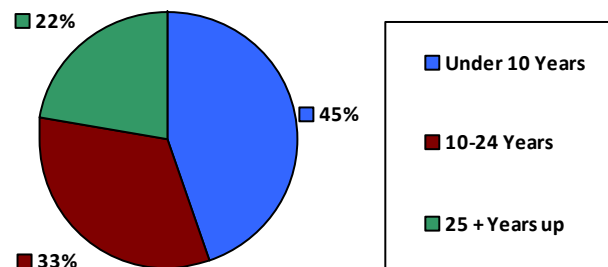
Justice: 2,270



### Race and Ethnicity

White, non-Hispanic	17,007	63.7%
Black/African American, non-Hispanic	4,614	17.3%
Hispanic or Latino	2,631	9.9%
Asian, non-Hispanic	1,990	7.5%
Two or more races	269	1.0%
American Indian and Alaska Native	122	0.5%
Native Hawaiian and Other Pacific Islander	48	0.2%

### Length of Service



### Educational Attainment

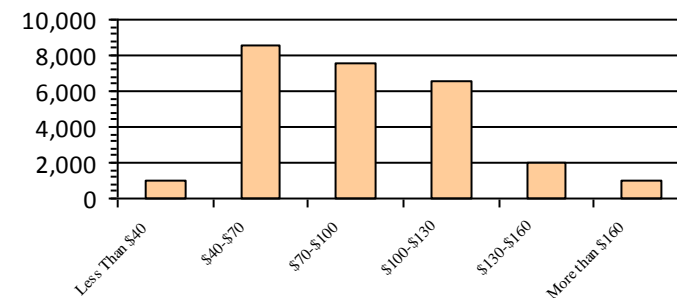
HS or Below	6,375	23.9%
Occupational Program	823	3.1%
Between HS and Bachelors	4,345	16.3%
Bachelors + Post Bachelors	9,872	37.0%
Masters and Post Grad	4,692	17.6%
Doctorate and Post Doc	554	2.1%

### Gender

### Age

M	16,715	62.6%	<35	5,955	22.3%
			35-54	13,315	49.9%
F	9,973	37.4%	55+	7,418	27.8%

### Average Salary (in thousands)



### Type of Employment<sup>2</sup>

Administrative	10,063	37.7%
Professional	8,717	32.7%
Technical	3,790	14.2%
Clerical	1,240	4.6%
Other White Collar	929	3.5%
Blue Collar	1,948	7.3%

All data unless otherwise noted is provided by the US Office of Personnel Management for the December 2016 reporting period. <sup>1</sup>Non-Federal Workers Data calculated from the US Bureau of Labor Statistics 2015 Annual Averages [https://www.bls.gov/news.release/archives/vet\\_03222016.pdf](https://www.bls.gov/news.release/archives/vet_03222016.pdf). <sup>2</sup>Employment categories consistent with the definitions given by the US Office of Personnel Management "Introduction to the Position Classification Standards" 2009. For a description of the employment categories, refer to <http://www.opm.gov/policy-data-oversight/classification-qualifications/classifying-general-schedule-positions/positionclassificationintro.pdf>.

## Who are the Civilian Federal Employees in

# New Jersey - 2015

**Federal Workers in New Jersey: 26,532**

Percentage Who Are Veterans: 21.15%

**Non-Federal Workers in New Jersey: 4,216,000**<sup>1</sup>

Percentage Who Are Veterans: 4.08%<sup>1</sup>

### Five Largest Federal Employers

Army: 5,189



DHS: 4,440



VA: 3,796



Navy: 2,236



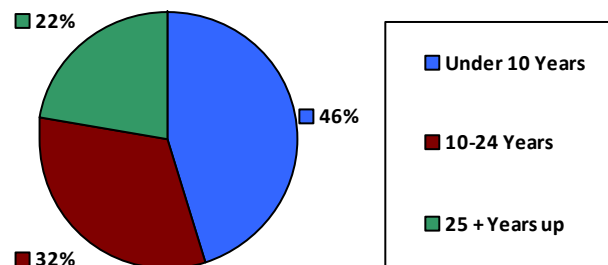
Justice: 2,190



### Race and Ethnicity

White, non-Hispanic	17,103	64.5%
Black/African American, non-Hispanic	4,535	17.1%
Hispanic or Latino	2,494	9.4%
Asian, non-Hispanic	1,992	7.5%
Two or more races	246	0.9%
American Indian and Alaska Native	120	0.5%
Native Hawaiian and Other Pacific Islander	40	0.2%

### Length of Service



### Educational Attainment

HS or Below	6,372	24.0%
Occupational Program	822	3.1%
Between HS and Bachelors	4,262	16.1%
Bachelors + Post Bachelors	9,962	37.5%
Masters and Post Grad	4,563	17.2%
Doctorate and Post Doc	516	1.9%

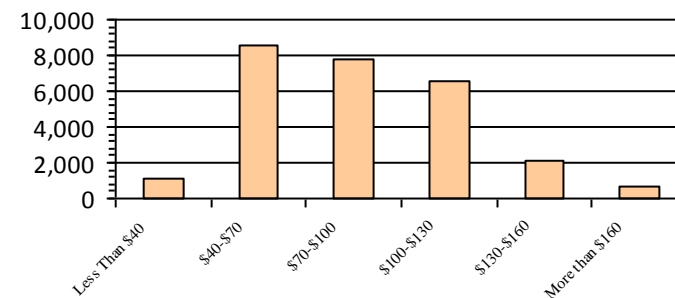
### Gender

M	16,602	62.6%
F	9,930	37.4%

### Age

<35	5,995	22.6%
35-54	13,389	50.5%
55+	7,148	26.9%

### Average Salary (in thousands)



### Type of Employment<sup>2</sup>

Administrative	9,926	37.4%
Professional	8,711	32.8%
Technical	3,895	14.7%
Clerical	1,145	4.3%
Other White Collar	925	3.5%
Blue Collar	1,930	7.3%

All data unless otherwise noted is provided by the US Office of Personnel Management for the December 2015 reporting period. <sup>1</sup>Non-Federal Workers Data calculated from the US Bureau of Labor Statistics 2015 Annual Averages [https://www.bls.gov/news.release/archives/vet\\_03222016.pdf](https://www.bls.gov/news.release/archives/vet_03222016.pdf). <sup>2</sup>Employment categories consistent with the definitions given by the US Office of Personnel Management "Introduction to the Position Classification Standards" 2009. For a description of the employment categories, refer to <http://www.opm.gov/policy-data-oversight/classification-qualifications/classifying-general-schedule-positions/positionclassificationintro.pdf>.



## Who are the Civilian Federal Employees in

# New Jersey - 2014

**Federal Workers in New Jersey: 26,562**

Percentage Who Are Veterans: 21.23%

**Non-Federal Workers in New Jersey: 4,161,000**<sup>1</sup>

Percentage Who Are Veterans: 3.65%<sup>1</sup>

### Five Largest Federal Employers

Army: 5,217



DHS: 4,386



VA: 3,763



Justice: 2,220



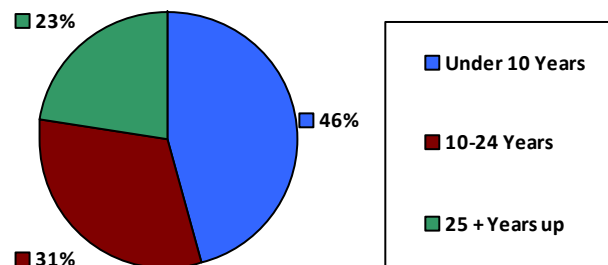
Navy: 2,171



### Race and Ethnicity

White, non-Hispanic	17,188	64.7%
Black/African American, non-Hispanic	4,603	17.3%
Hispanic or Latino	2,441	9.2%
Asian, non-Hispanic	1,947	7.3%
Two or more races	227	0.9%
American Indian and Alaska Native	115	0.4%
Native Hawaiian and Other Pacific Islander	39	0.1%

### Length of Service



### Educational Attainment

HS or Below	6,553	24.7%
Occupational Program	854	3.2%
Between HS and Bachelors	4,365	16.4%
Bachelors + Post Bachelors	9,947	37.4%
Masters and Post Grad	4,318	16.2%
Doctorate and Post Doc	479	1.8%

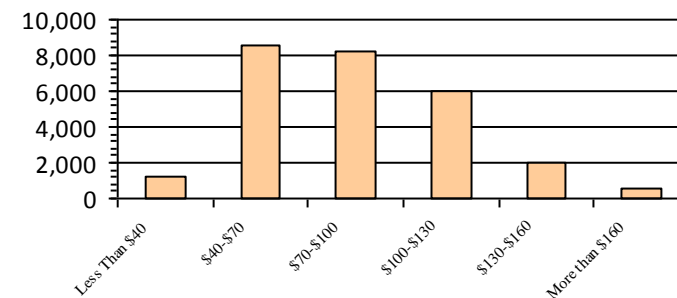
### Gender

M	16,607	62.5%
F	9,955	37.5%

### Age

<35	6,152	23.2%
35-54	13,462	50.7%
55+	6,948	26.2%

### Average Salary (in thousands)



### Type of Employment<sup>2</sup>

Administrative	9,810	36.9%
Professional	8,539	32.1%
Technical	3,975	15.0%
Clerical	1,204	4.5%
Other White Collar	1,001	3.8%
Blue Collar	2,033	7.7%

All data unless otherwise noted is provided by the US Office of Personnel Management for the December 2014 reporting period. <sup>1</sup>Non-Federal Workers Data calculated from the US Bureau of Labor Statistics 2014 Annual Averages [https://www.bls.gov/news.release/archives/vet\\_03182015.pdf](https://www.bls.gov/news.release/archives/vet_03182015.pdf). <sup>2</sup>Employment categories consistent with the definitions given by the US Office of Personnel Management "Introduction to the Position Classification Standards" 2009. For a description of the employment categories, refer to <http://www.opm.gov/policy-data-oversight/classification-qualifications/classifying-general-schedule-positions/positionclassificationintro.pdf>.



## Who are the Civilian Federal Employees in

# New Jersey - 2013

**Federal Workers in New Jersey: 26,633**

*Percentage Who Are Veterans: 21.10%*

**Non-Federal Workers in New Jersey: 4,107,000<sup>1</sup>**

*Percentage Who Are Veterans: 3.80%<sup>1</sup>*

### Five Largest Federal Employers

Army: 5,385



DHS: 4,478



VA: 3,797



Justice: 2,190



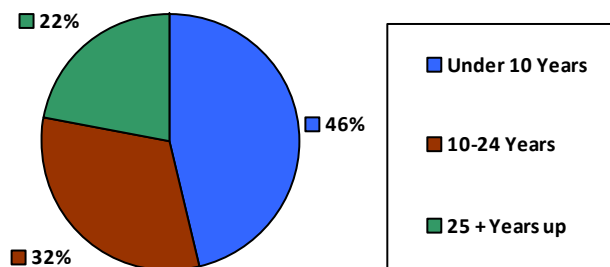
Navy: 2,091



### Race and Ethnicity

White, non-Hispanic	17,351	65.1%
Black/African American, non-Hispanic	4,605	17.3%
Hispanic or Latino	2,399	9.0%
Asian, non-Hispanic	1,906	7.2%
Two or more races	208	0.8%
American Indian and Alaska Native	125	0.5%
Native Hawaiian and Other Pacific Islander	37	0.1%

### Length of Service



### Educational Attainment

HS or Below	6,763	25.4%
Occupational Program	924	3.5%
Between HS and Bachelors	4,365	16.4%
Bachelors + Post Bachelors	9,964	37.4%
Masters and Post Grad	4,119	15.5%
Doctorate and Post Doc	475	1.8%

### Gender

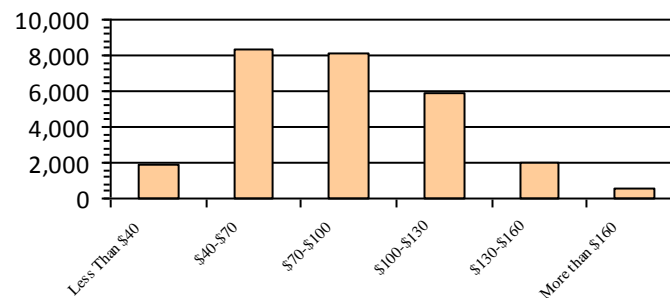
M	16,662	62.6%
F	9,971	37.4%

### Age

<35	6,090	22.9%
35-54	13,600	51.1%
55+	6,943	26.1%

Number of Employees

### Average Salary (in thousands)



### Type of Employment<sup>2</sup>

Administrative	9,758	36.6%
Professional	8,606	32.3%
Technical	3,542	13.3%
Clerical	1,791	6.7%
Other White Collar	874	3.3%
Blue Collar	2,061	7.7%

All data unless otherwise noted is provided by the US Office of Personnel Management for the December 2013 reporting period. <sup>1</sup>Non-Federal Workers Data calculated from the US Bureau of Labor Statistics 2013 Annual Averages [https://www.bls.gov/news.release/archives/vet\\_03202014.pdf](https://www.bls.gov/news.release/archives/vet_03202014.pdf). <sup>2</sup>Employment categories consistent with the definitions given by the US Office of Personnel Management "Introduction to the Position Classification Standards" 2009. For a description of the employment categories, refer to <http://www.opm.gov/policy-data-oversight/classification-qualifications/classifying-general-schedule-positions/positionclassificationintro.pdf>.