

Who are the Civilian Federal Employees in New Hampshire - 2021

Federal Workers in New Hampshire: 4,964

Percentage Who Are Veterans: 24.84%

Non-Federal Workers in New Hampshire: 691,000¹

Percentage Who Are Veterans: 6.22%¹

Five Largest Federal Employers

VA: 1,316



DOT: 645



Army: 467



State: 400



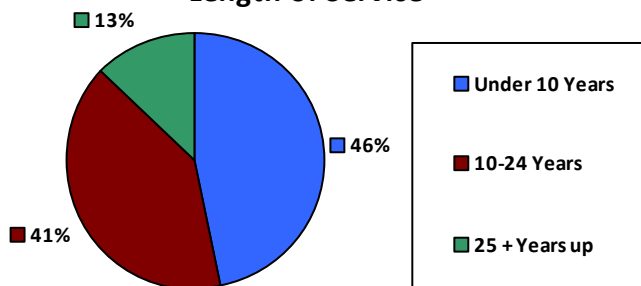
Justice: 368



Race and Ethnicity

White, non-Hispanic	4,473	90.1%
Black/African American, non-Hispanic	92	1.9%
Hispanic or Latino	171	3.4%
Asian, non-Hispanic	124	2.5%
Two or more races	56	1.1%
American Indian and Alaska Native	24	0.5%
Native Hawaiian and Other Pacific Islander	6	0.1%

Length of Service



Educational Attainment

HS or Below	1,578	31.8%
Occupational Program	74	1.5%
Between HS and Bachelors	777	15.7%
Bachelors + Post Bachelors	1,639	33.0%
Masters and Post Grad	723	14.6%
Doctorate and Post Doc	170	3.4%

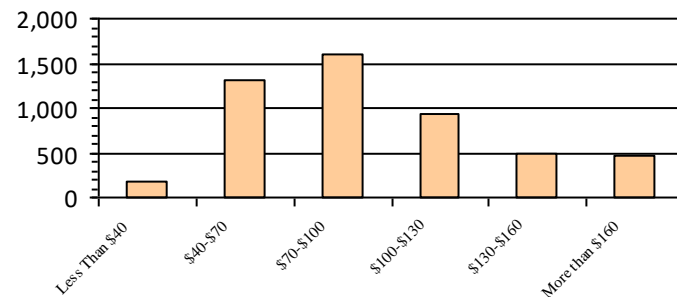
Gender

M	2,824	56.9%
F	2,140	43.1%

Age

<35	871	17.5%
35-54	2,667	53.7%
55+	1,426	28.7%

Average Salary (in thousands)



Type of Employment²

Administrative	1,305	26.3%
Professional	624	12.6%
Technical	296	6.0%
Clerical	194	3.9%
Other White Collar	283	5.7%
Blue Collar	331	6.7%

All data unless otherwise noted is provided by the US Office of Personnel Management for the December 2015 reporting period. ¹Non-Federal Workers Data calculated from the US Bureau of Labor Statistics 2015 Annual Averages https://www.bls.gov/news.release/archives/vet_03222016.pdf. ²Employment categories consistent with the definitions given by the US Office of Personnel Management "Introduction to the Position Classification Standards" 2009. For a description of the employment categories, refer to <http://www.opm.gov/policy-data-oversight/classification-qualifications/classifying-general-schedule-positions/positionclassificationintro.pdf>.

Who are the Civilian Federal Employees in New Hampshire - 2020

Federal Workers in New Hampshire: 4,997

Percentage Who Are Veterans: 25.59%

Non-Federal Workers in New Hampshire: 692,000¹

Percentage Who Are Veterans: 6.36%¹

Five Largest Federal Employers

VA: 1,304



DOT: 671



Army: 471



State: 406



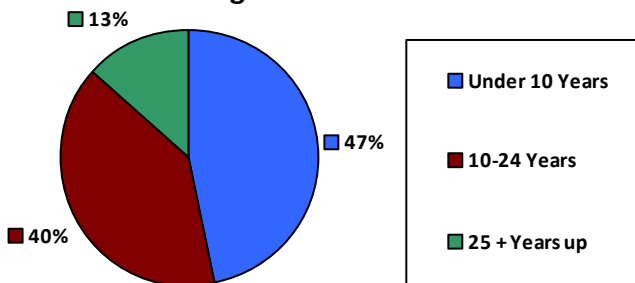
Justice: 373



Race and Ethnicity

White, non-Hispanic	4,514	90.3%
Black/African American, non-Hispanic	93	1.9%
Hispanic or Latino	175	3.5%
Asian, non-Hispanic	109	2.2%
Two or more races	62	1.2%
American Indian and Alaska Native	26	0.5%
Native Hawaiian and Other Pacific Islander	7	0.1%

Length of Service



Educational Attainment

HS or Below	1,589	31.8%
Occupational Program	70	1.4%
Between HS and Bachelors	824	16.5%
Bachelors + Post Bachelors	1,641	32.8%
Masters and Post Grad	712	14.2%
Doctorate and Post Doc	159	3.2%

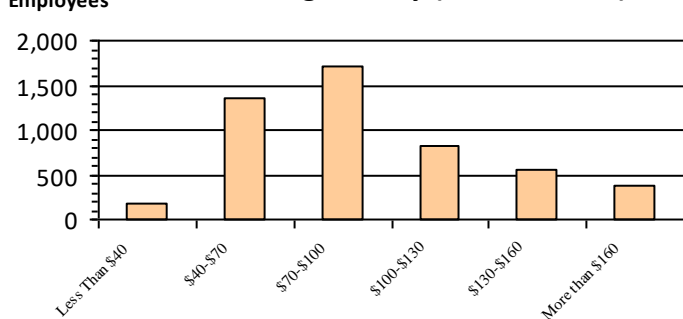
Gender

M	2,895	57.9%
F	2,102	42.1%

Age

<35	939	18.8%
35-54	2,657	53.2%
55+	1,401	28.0%

Average Salary (in thousands)



Type of Employment²

Administrative	2,288	45.8%
Professional	1,295	25.9%
Technical	635	12.7%
Clerical	273	5.5%
Other White Collar	170	3.4%
Blue Collar	331	6.6%

All data unless otherwise noted is provided by the US Office of Personnel Management for the December 2015 reporting period. ¹Non-Federal Workers Data calculated from the US Bureau of Labor Statistics 2015 Annual Averages https://www.bls.gov/news.release/archives/vet_03222016.pdf. ²Employment categories consistent with the definitions given by the US Office of Personnel Management "Introduction to the Position Classification Standards" 2009. For a description of the employment categories, refer to <http://www.opm.gov/policy-data-oversight/classification-qualifications/classifying-general-schedule-positions/positionclassificationintro.pdf>.

Who are the Civilian Federal Employees in New Hampshire - 2019

Federal Workers in New Hampshire: 4,992

Percentage Who Are Veterans: 25.34%

Non-Federal Workers in New Hampshire: 744,000¹

Percentage Who Are Veterans: 6.05%¹

Five Largest Federal Employers

VA: 1,241



DOT: 683



Army: 452



State: 423



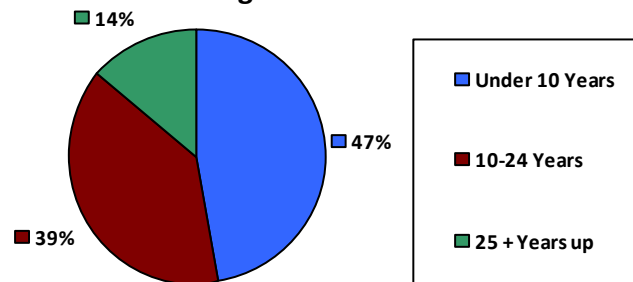
Justice: 381



Race and Ethnicity

White, non-Hispanic	4,533	90.8%
Black/African American, non-Hispanic	89	1.8%
Hispanic or Latino	166	3.3%
Asian, non-Hispanic	105	2.1%
Two or more races	53	1.1%
American Indian and Alaska Native	31	0.6%
Native Hawaiian and Other Pacific Islander	7	0.1%

Length of Service



Educational Attainment

HS or Below	1,527	30.6%
Occupational Program	106	2.1%
Between HS and Bachelors	870	17.4%
Bachelors + Post Bachelors	1,622	32.5%
Masters and Post Grad	698	14.0%
Doctorate and Post Doc	165	3.3%

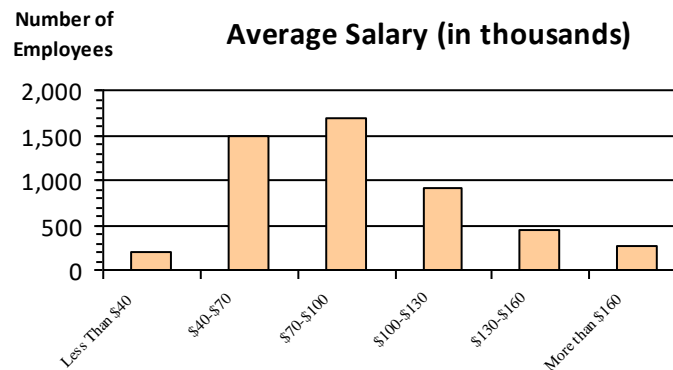
Gender

M	2,889	57.9%
F	2,103	42.1%

Age

<35	976	19.5%
35-54	2,614	52.4%
55+	1,402	28.1%

Average Salary (in thousands)



Type of Employment²

Administrative	2,284	45.7%
Professional	1,298	26.0%
Technical	641	12.8%
Clerical	258	5.2%
Other White Collar	189	3.8%
Blue Collar	318	6.4%

All data unless otherwise noted is provided by the US Office of Personnel Management for the December 2015 reporting period. ¹Non-Federal Workers Data calculated from the US Bureau of Labor Statistics 2015 Annual Averages https://www.bls.gov/news.release/archives/vet_03222016.pdf. ²Employment categories consistent with the definitions given by the US Office of Personnel Management "Introduction to the Position Classification Standards" 2009. For a description of the employment categories, refer to <http://www.opm.gov/policy-data-oversight/classification-qualifications/classifying-general-schedule-positions/positionclassificationintro.pdf>.

Who are the Civilian Federal Employees in New Hampshire - 2018

Federal Workers in New Hampshire: 4,954

Percentage Who Are Veterans: 25.43%

Non-Federal Workers in New Hampshire: 727,000¹

*Percentage Who Are Veterans: 6.33%*¹

Five Largest Federal Employers

VA: 1,180



DOT: 665



State: 447



Army: 444



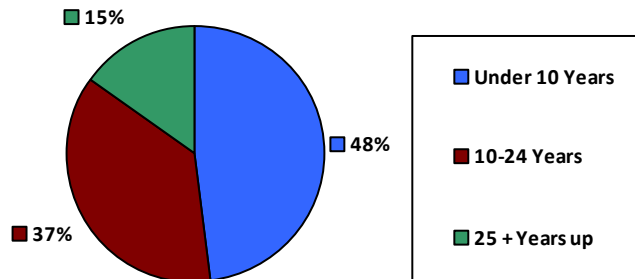
Air Force: 375



Race and Ethnicity

White, non-Hispanic	4,491	90.6%
Black/African American, non-Hispanic	85	1.7%
Hispanic or Latino	180	3.6%
Asian, non-Hispanic	101	2.0%
Two or more races	56	1.1%
American Indian and Alaska Native	31	0.6%
Native Hawaiian and Other Pacific Islander	7	0.1%

Length of Service



Educational Attainment

HS or Below	1,580	31.9%
Occupational Program	114	2.3%
Between HS and Bachelors	877	17.7%
Bachelors + Post Bachelors	1,571	31.7%
Masters and Post Grad	649	13.1%
Doctorate and Post Doc	161	3.2%

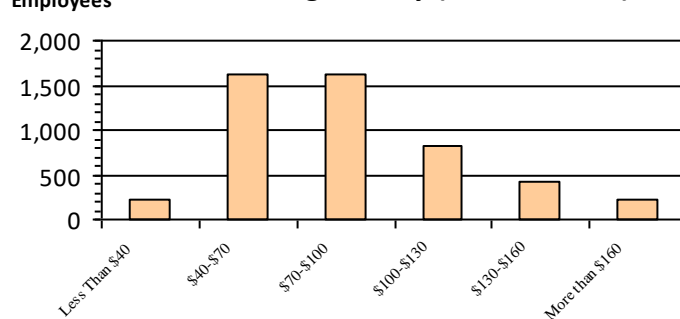
Gender

M	2,913	58.9%
F	2,035	41.1%

Age

<35	1,004	20.3%
35-54	2,630	53.1%
55+	1,320	26.6%

Average Salary (in thousands)



Type of Employment²

Administrative	2,281	46.0%
Professional	1,212	24.5%
Technical	669	13.5%
Clerical	258	5.2%
Other White Collar	169	3.4%
Blue Collar	361	7.3%

All data unless otherwise noted is provided by the US Office of Personnel Management for the December 2018 reporting period. ¹Non-Federal Workers Data calculated from the US Bureau of Labor Statistics 2018 Annual Averages www.bls.gov/news.release/pdf/vet.pdf. ²Employment categories consistent with the definitions given by the US Office of Personnel Management "Introduction to the Position Classification Standards" 2009. For a description of the employment categories, refer to www.opm.gov/policy-data-oversight/classification-qualifications/classifying-general-schedule-positions/positionclassificationintro.pdf.

Who are the Civilian Federal Employees in New Hampshire - 2017

Federal Workers in New Hampshire: 4,855

Percentage Who Are Veterans: 26.01%

Non-Federal Workers in New Hampshire: 707,000¹

Percentage Who Are Veterans: 7.28%²

Five Largest Federal Employers

VA: 1,041



DOT: 650



State: 475



Army: 454



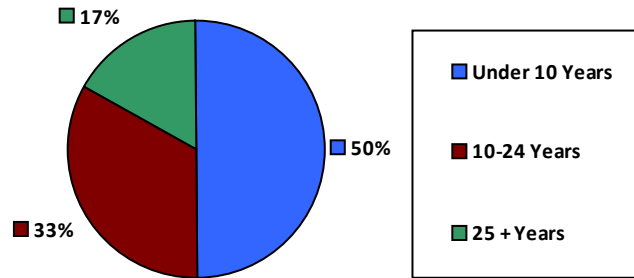
Justice: 387



Race and Ethnicity

White, non-Hispanic	4,408	90.8%
Black/African American, non-Hispanic	82	1.7%
Hispanic or Latino	178	3.7%
Asian, non-Hispanic	94	1.9%
Two or more races	55	1.1%
American Indian and Alaska Native	28	0.6%
Native Hawaiian and Other Pacific Islander	9	0.2%

Length of Service



Educational Attainment

HS or Below	1,500	30.9%
Occupational Program	115	2.4%
Between HS and Bachelors	893	18.4%
Bachelors + Post Bachelors	1,579	32.5%
Masters and Post Grad	623	12.8%
Doctorate and Post Doc	143	2.9%

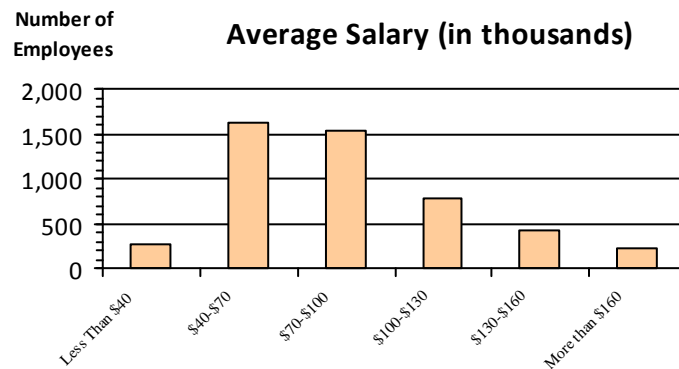
Gender

M	2,869	59.1%
F	1,983	40.9%

Age

<35	1,003	20.7%
35-54	2,570	52.9%
55+	1,282	26.4%

Average Salary (in thousands)



Type of Employment²

Administrative	2,232	46.0%
Professional	1,151	23.7%
Technical	679	14.0%
Clerical	274	5.6%
Other White Collar	179	3.7%
Blue Collar	340	7.0%

All data unless otherwise noted is provided by the US Office of Personnel Management for the December 2017 reporting period. Non-Federal Workers Data calculated from the US Bureau of Labor Statistics 2017 Annual Averages <https://www.bls.gov/news.release/vet.htm>.¹ Employment categories consistent with the definitions given by the US Office of Personnel Management "Introduction to the Position Classification Standards" (Revised: 2009), available at <https://www.opm.gov/policy-data-oversight/classification-qualifications/classifying-general-schedule-positions/positionclassificationintro.pdf>.²

Who are the Civilian Federal Employees in New Hampshire - 2016

Federal Workers in New Hampshire: 4,902

Percentage Who Are Veterans: 25.64%

Non-Federal Workers in New Hampshire: 718,000¹

*Percentage Who Are Veterans: 8.63%*¹

Five Largest Federal Employers

VA: 1,015



DOT: 654



State: 504



Army: 452



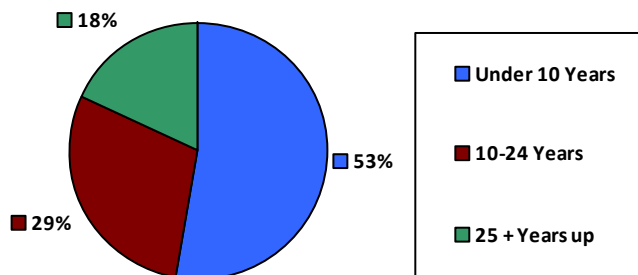
Justice: 412



Race and Ethnicity

White, non-Hispanic	4,454	90.9%
Black/African American, non-Hispanic	94	1.9%
Hispanic or Latino	174	3.5%
Asian, non-Hispanic	95	1.9%
Two or more races	46	0.9%
American Indian and Alaska Native	31	0.6%
Native Hawaiian and Other Pacific Islander	7	0.1%

Length of Service



Educational Attainment

HS or Below	1,515	30.9%
Occupational Program	116	2.4%
Between HS and Bachelors	921	18.8%
Bachelors + Post Bachelors	1,583	32.3%
Masters and Post Grad	615	12.5%
Doctorate and Post Doc	151	3.1%

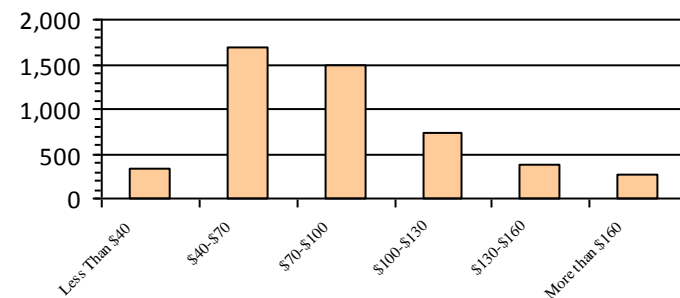
Gender

M	2,904	59.2%
F	1,997	40.7%

Age

<35	1,063	21.7%
35-54	2,542	51.9%
55+	1,297	26.5%

Average Salary (in thousands)



Type of Employment²

Administrative	2,228	45.4%
Professional	1,175	24.0%
Technical	700	14.3%
Clerical	227	4.6%
Other White Collar	231	4.7%
Blue Collar	341	7.0%

All data unless otherwise noted is provided by the US Office of Personnel Management for the December 2016 reporting period. ¹Non-Federal Workers Data calculated from the US Bureau of Labor Statistics 2015 Annual Averages https://www.bls.gov/news.release/archives/vet_03222016.pdf. ²Employment categories consistent with the definitions given by the US Office of Personnel Management "Introduction to the Position Classification Standards" 2009. For a description of the employment categories, refer to <http://www.opm.gov/policy-data-oversight/classification-qualifications/classifying-general-schedule-positions/positionclassificationintro.pdf>.

Who are the Civilian Federal Employees in New Hampshire - 2015

Federal Workers in New Hampshire: 4,875

Percentage Who Are Veterans: 26.58%

Non-Federal Workers in New Hampshire: 704,000¹

*Percentage Who Are Veterans: 8.81%*¹

Five Largest Federal Employers

VA: 988



DOT: 694



Army: 464



State: 462



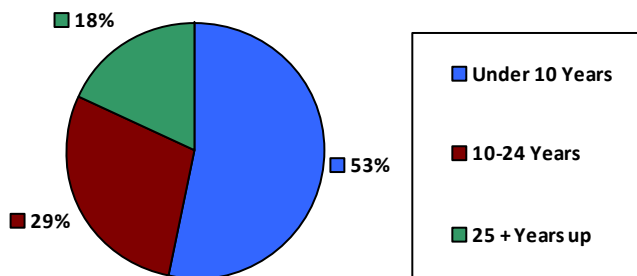
Justice: 416



Race and Ethnicity

White, non-Hispanic	4,447	91.2%
Black/African American, non-Hispanic	97	2.0%
Hispanic or Latino	164	3.4%
Asian, non-Hispanic	85	1.7%
Two or more races	40	0.8%
American Indian and Alaska Native	34	0.7%
Native Hawaiian and Other Pacific Islander	6	0.1%

Length of Service



Educational Attainment

HS or Below	1,506	30.9%
Occupational Program	132	2.7%
Between HS and Bachelors	938	19.2%
Bachelors + Post Bachelors	1,563	32.1%
Masters and Post Grad	584	12.0%
Doctorate and Post Doc	148	3.0%

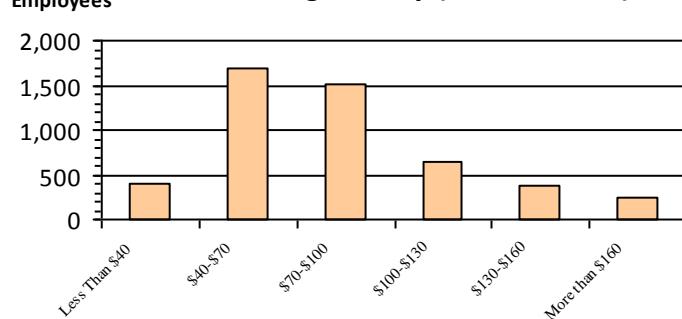
Gender

M	2,893	59.3%
F	1,982	40.7%

Age

<35	1,072	22.0%
35-54	2,537	52.0%
55+	1,266	26.0%

Average Salary (in thousands)



Type of Employment²

Administrative	2,241	46.0%
Professional	1,128	23.1%
Technical	729	15.0%
Clerical	247	5.1%
Other White Collar	214	4.4%
Blue Collar	316	6.5%

All data unless otherwise noted is provided by the US Office of Personnel Management for the December 2015 reporting period. ¹Non-Federal Workers Data calculated from the US Bureau of Labor Statistics 2015 Annual Averages https://www.bls.gov/news.release/archives/vet_03222016.pdf. ²Employment categories consistent with the definitions given by the US Office of Personnel Management "Introduction to the Position Classification Standards" 2009. For a description of the employment categories, refer to <http://www.opm.gov/policy-data-oversight/classification-qualifications/classifying-general-schedule-positions/positionclassificationintro.pdf>.

Who are the Civilian Federal Employees in New Hampshire - 2014

Federal Workers in New Hampshire: 4,728

Percentage Who Are Veterans: 26.08%

Non-Federal Workers in New Hampshire: 696,000¹

Percentage Who Are Veterans: 8.48%¹

Five Largest Federal Employers

VA: 924



DOT: 699



Army: 463



State: 427



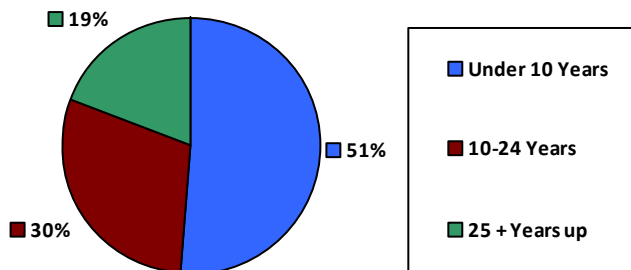
Justice: 369



Race and Ethnicity

White, non-Hispanic	4,340	91.8%
Black/African American, non-Hispanic	82	1.7%
Hispanic or Latino	154	3.3%
Asian, non-Hispanic	82	1.7%
Two or more races	33	0.7%
American Indian and Alaska Native	31	0.7%
Native Hawaiian and Other Pacific Islander	5	0.1%

Length of Service



Educational Attainment

HS or Below	1,468	31.0%
Occupational Program	139	2.9%
Between HS and Bachelors	942	19.9%
Bachelors + Post Bachelors	1,507	31.9%
Masters and Post Grad	542	11.5%
Doctorate and Post Doc	123	2.6%

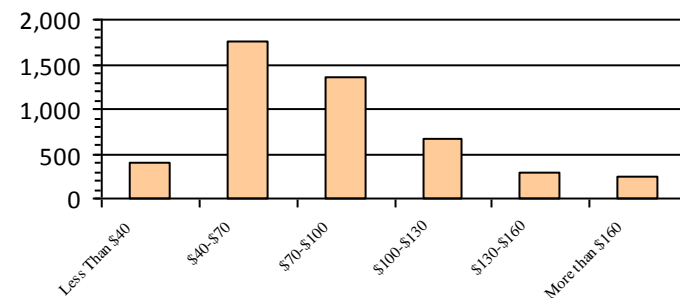
Gender

M	2,832	59.9%
F	1,896	40.1%

Age

<35	960	20.3%
35-54	2,518	53.3%
55+	1,250	26.4%

Average Salary (in thousands)



Type of Employment²

Administrative	2,234	47.2%
Professional	1,058	22.4%
Technical	718	15.2%
Clerical	238	5.0%
Other White Collar	158	3.3%
Blue Collar	322	6.8%

All data unless otherwise noted is provided by the US Office of Personnel Management for the December 2014 reporting period. ¹Non-Federal Workers Data calculated from the US Bureau of Labor Statistics 2014 Annual Averages https://www.bls.gov/news.release/archives/vet_03182015.pdf. ²Employment categories consistent with the definitions given by the US Office of Personnel Management "Introduction to the Position Classification Standards" 2009. For a description of the employment categories, refer to <http://www.opm.gov/policy-data-oversight/classification-qualifications/classifying-general-schedule-positions/positionclassificationintro.pdf>.

Who are the Civilian Federal Employees in New Hampshire - 2013

Federal Workers in New Hampshire: 4,726

Percentage Who Are Veterans: 24.78%

Non-Federal Workers in New Hampshire: 694,000¹

Percentage Who Are Veterans: 8.07%¹

Five Largest Federal Employers

VA: 892



DOT: 705



Army: 487



State: 435



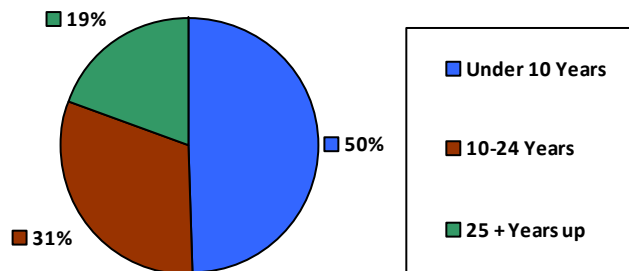
Justice: 377



Race and Ethnicity

White, non-Hispanic	4,362	92.3%
Black/African American, non-Hispanic	82	1.7%
Hispanic or Latino	144	3.0%
Asian, non-Hispanic	78	1.7%
Two or more races	27	0.6%
American Indian and Alaska Native	27	0.6%
Native Hawaiian and Other Pacific Islander	5	0.1%

Length of Service



Educational Attainment

HS or Below	1,500	31.7%
Occupational Program	149	3.2%
Between HS and Bachelors	965	20.4%
Bachelors + Post Bachelors	1,456	30.8%
Masters and Post Grad	529	11.2%
Doctorate and Post Doc	123	2.6%

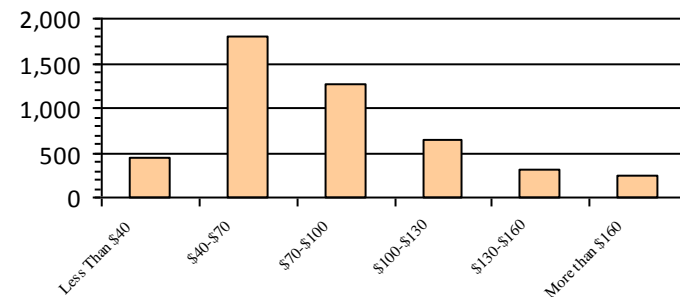
Gender

M	2,806	59.4%
F	1,920	40.6%

Age

<35	939	19.9%
35-54	2,517	53.3%
55+	1,270	26.9%

Average Salary (in thousands)



Type of Employment²

Administrative	2,220	47.0%
Professional	1,065	22.5%
Technical	694	14.7%
Clerical	270	5.7%
Other White Collar	176	3.7%
Blue Collar	301	6.4%

All data unless otherwise noted is provided by the US Office of Personnel Management for the December 2013 reporting period. ¹Non-Federal Workers Data calculated from the US Bureau of Labor Statistics 2013 Annual Averages https://www.bls.gov/news.release/archives/vet_03202014.pdf. ²Employment categories consistent with the definitions given by the US Office of Personnel Management "Introduction to the Position Classification Standards" 2009. For a description of the employment categories, refer to <http://www.opm.gov/policy-data-oversight/classification-qualifications/classifying-general-schedule-positions/positionclassificationintro.pdf>.