

Who are the Civilian Federal Employees in

Nevada - 2021

Federal Workers in Nevada: 15,160

Percentage Who Are Veterans: 33.36%

Non-Federal Workers in Nevada: 1,392,000¹

Percentage Who Are Veterans: 7.26%¹

Five Largest Federal Employers

VA: 5,874



DHS: 2,013



DOI: 1,930



Air Force: 1,770



Justice: 554



Race and Ethnicity

White, non-Hispanic	8,548	56.4%
Black/African American, non-Hispanic	1,951	12.9%
Hispanic or Latino	1,652	10.9%
Asian, non-Hispanic	1,892	12.5%
Two or more races	437	2.9%
American Indian and Alaska Native	299	2.0%
Native Hawaiian and Other Pacific Islander	243	1.6%

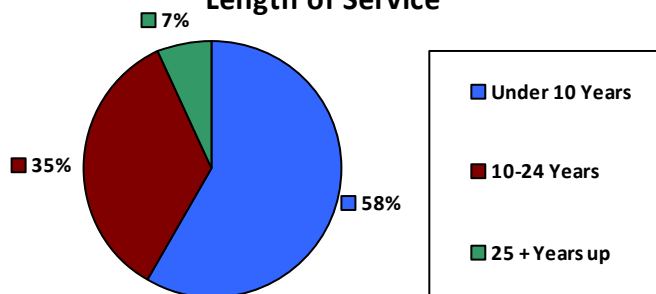
Gender

M	8,014	52.9%
F	7,146	47.1%

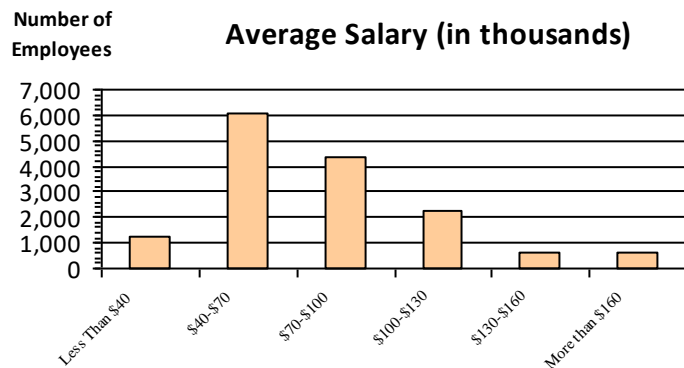
Age

<35	2,929	19.3%
35-54	8,094	53.4%
55+	4,137	27.3%

Length of Service



Average Salary (in thousands)



Educational Attainment

HS or Below	4,586	30.2%
Occupational Program	425	2.8%
Between HS and Bachelors	3,224	21.3%
Bachelors + Post Bachelors	4,455	29.4%
Masters and Post Grad	2,008	13.2%
Doctorate and Post Doc	419	2.8%

Type of Employment²

Administrative	4,062	26.8%
Professional	3,930	25.9%
Technical	1,102	7.3%
Clerical	350	2.3%
Other White Collar	1,143	7.5%
Blue Collar	1,187	7.8%

All data unless otherwise noted is provided by the US Office of Personnel Management for the December 2015 reporting period. ¹Non-Federal Workers Data calculated from the US Bureau of Labor Statistics 2015 Annual Averages https://www.bls.gov/news.release/archives/vet_03222016.pdf. ²Employment categories consistent with the definitions given by the US Office of Personnel Management "Introduction to the Position Classification Standards" 2009. For a description of the employment categories, refer to <http://www.opm.gov/policy-data-oversight/classification-qualifications/classifying-general-schedule-positions/positionclassificationintro.pdf>.

Who are the Civilian Federal Employees in

Nevada - 2020

Federal Workers in Nevada: 14,735

Percentage Who Are Veterans: 34.58%

Non-Federal Workers in Nevada: 1,325,000¹

Percentage Who Are Veterans: 7.85%¹

Five Largest Federal Employers

VA: 5,708



DOI: 1,934



DHS: 1,853



Air Force: 1,762



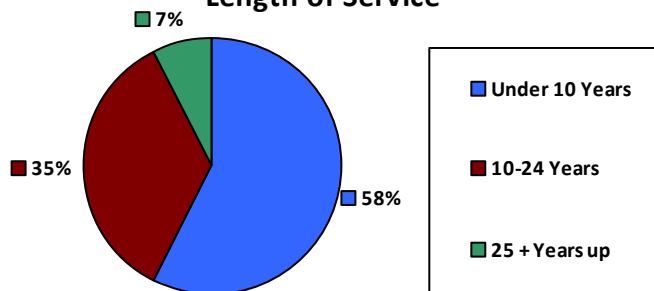
Justice: 557



Race and Ethnicity

White, non-Hispanic	8,524	57.8%
Black/African American, non-Hispanic	1,871	12.7%
Hispanic or Latino	1,495	10.1%
Asian, non-Hispanic	1,783	12.1%
Two or more races	419	2.8%
American Indian and Alaska Native	295	2.0%
Native Hawaiian and Other Pacific Islander	217	1.5%

Length of Service



Educational Attainment

HS or Below	4,443	30.1%
Occupational Program	422	2.9%
Between HS and Bachelors	3,219	21.8%
Bachelors + Post Bachelors	4,256	28.9%
Masters and Post Grad	1,951	13.2%
Doctorate and Post Doc	387	2.6%

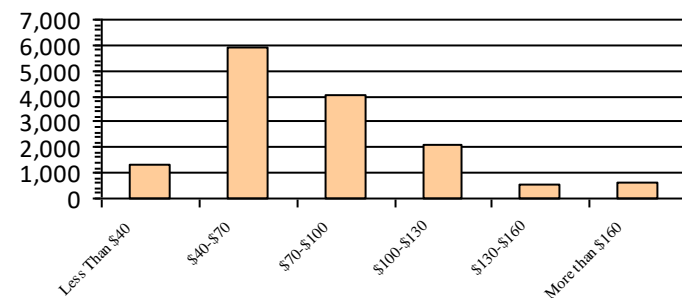
Gender

M	7,873	53.4%
F	6,862	46.6%

Age

<35	2,793	19.0%
35-54	7,809	53.0%
55+	4,133	28.0%

Average Salary (in thousands)



Type of Employment²

Administrative	4,356	29.6%
Professional	3,911	26.5%
Technical	3,954	26.8%
Clerical	974	6.6%
Other White Collar	347	2.4%
Blue Collar	1,187	8.1%

All data unless otherwise noted is provided by the US Office of Personnel Management for the December 2015 reporting period. ¹Non-Federal Workers Data calculated from the US Bureau of Labor Statistics 2015 Annual Averages https://www.bls.gov/news.release/archives/vet_03222016.pdf. ²Employment categories consistent with the definitions given by the US Office of Personnel Management "Introduction to the Position Classification Standards" 2009. For a description of the employment categories, refer to <http://www.opm.gov/policy-data-oversight/classification-qualifications/classifying-general-schedule-positions/positionclassificationintro.pdf>.

Who are the Civilian Federal Employees in

Nevada - 2019

Federal Workers in Nevada: 14,338

Percentage Who Are Veterans: 35.30%

Non-Federal Workers in Nevada: 1,493,000¹

Percentage Who Are Veterans: 7.90%¹

Five Largest Federal Employers

VA: 5,380



DHS: 2,005



DOI: 1,864



Air Force: 1,696



Justice: 528



Race and Ethnicity

White, non-Hispanic	8,317	58.0%
Black/African American, non-Hispanic	1,855	12.9%
Hispanic or Latino	1,440	10.0%
Asian, non-Hispanic	1,701	11.9%
Two or more races	407	2.8%
American Indian and Alaska Native	290	2.0%
Native Hawaiian and Other Pacific Islander	213	1.5%

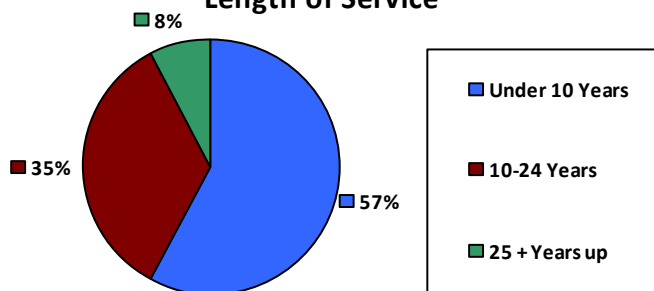
Gender

M	7,730	53.9%
F	6,608	46.1%

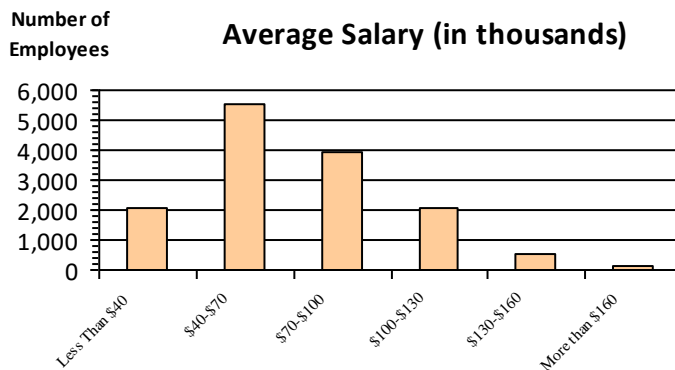
Age

<35	2,737	19.1%
35-54	7,551	52.7%
55+	4,050	28.2%

Length of Service



Average Salary (in thousands)



Educational Attainment

HS or Below	3,878	27.0%
Occupational Program	680	4.7%
Between HS and Bachelors	3,382	23.6%
Bachelors + Post Bachelors	4,128	28.8%
Masters and Post Grad	1,803	12.6%
Doctorate and Post Doc	440	3.1%

Type of Employment²

Administrative	4,206	29.3%
Professional	3,701	25.8%
Technical	3,846	26.8%
Clerical	1,071	7.5%
Other White Collar	353	2.5%
Blue Collar	1,155	8.1%

All data unless otherwise noted is provided by the US Office of Personnel Management for the December 2015 reporting period. ¹Non-Federal Workers Data calculated from the US Bureau of Labor Statistics 2015 Annual Averages https://www.bls.gov/news.release/archives/vet_03222016.pdf. ²Employment categories consistent with the definitions given by the US Office of Personnel Management "Introduction to the Position Classification Standards" 2009. For a description of the employment categories, refer to <http://www.opm.gov/policy-data-oversight/classification-qualifications/classifying-general-schedule-positions/positionclassificationintro.pdf>.

Who are the Civilian Federal Employees in

Nevada - 2018

Federal Workers in Nevada: 13,744

Percentage Who Are Veterans: 35.78%

Non-Federal Workers in Nevada: 1,445,000¹

Percentage Who Are Veterans: 7.89%¹

Five Largest Federal Employers

VA: 5,008



DHS: 1,942



DOI: 1,878



Air Force: 1,581



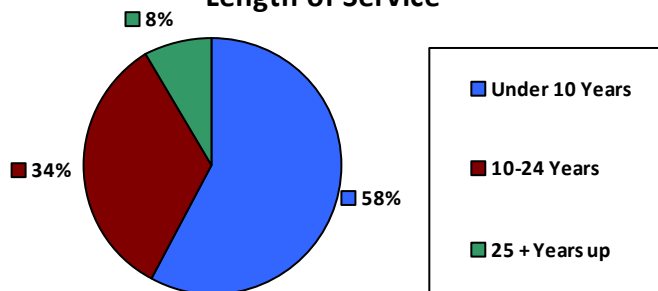
Justice: 519



Race and Ethnicity

White, non-Hispanic	8,149	59.3%
Black/African American, non-Hispanic	1,734	12.6%
Hispanic or Latino	1,345	9.8%
Asian, non-Hispanic	1,572	11.4%
Two or more races	372	2.7%
American Indian and Alaska Native	291	2.1%
Native Hawaiian and Other Pacific Islander	192	1.4%

Length of Service



Educational Attainment

HS or Below	3,461	25.2%
Occupational Program	673	4.9%
Between HS and Bachelors	3,406	24.8%
Bachelors + Post Bachelors	4,024	29.3%
Masters and Post Grad	1,791	13.0%
Doctorate and Post Doc	365	2.7%

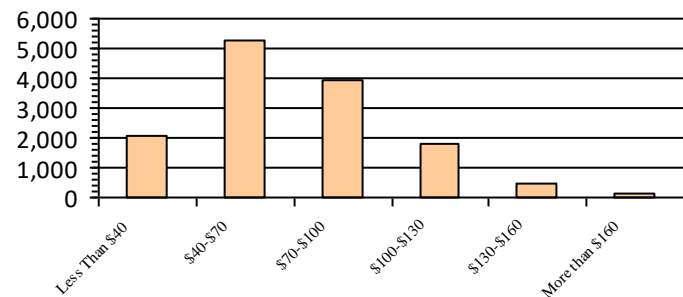
Gender

M	7,449	54.2%
F	6,290	45.8%

Age

<35	2,602	18.9%
35-54	7,217	52.5%
55+	3,925	28.6%

Average Salary (in thousands)



Type of Employment²

Administrative	4,135	30.1%
Professional	3,496	25.4%
Technical	3,731	27.1%
Clerical	987	7.2%
Other White Collar	278	2.0%
Blue Collar	1,111	8.1%

All data unless otherwise noted is provided by the US Office of Personnel Management for the December 2018 reporting period. ¹Non-Federal Workers Data calculated from the US Bureau of Labor Statistics 2018 Annual Averages www.bls.gov/news.release/pdf/vet.pdf. ²Employment categories consistent with the definitions given by the US Office of Personnel Management "Introduction to the Position Classification Standards" 2009. For a description of the employment categories, refer to www.opm.gov/policy-data-oversight/classification-qualifications/classifying-general-schedule-positions/positionclassificationintro.pdf.

Who are the Civilian Federal Employees in

Nevada - 2017

Federal Workers in Nevada: 13,849

Percentage Who Are Veterans: 34.91%

Non-Federal Workers in Nevada: 1,374,000¹

Percentage Who Are Veterans: 10.36%²

Five Largest Federal Employers

VA: 4,820



DHS: 2,181



DOI: 1,848



Air Force: 1,539



Justice: 520



Race and Ethnicity

White, non-Hispanic	8,533	61.6%
Black/African American, non-Hispanic	1,646	11.9%
Hispanic or Latino	1,282	9.3%
Asian, non-Hispanic	1,561	11.3%
Two or more races	336	2.4%
American Indian and Alaska Native	300	2.2%
Native Hawaiian and Other Pacific Islander	169	1.2%

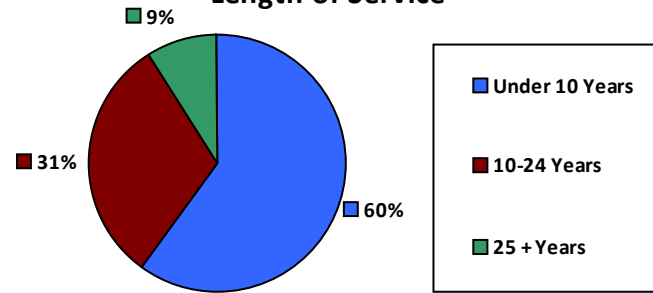
Gender

M	7,490	54.1%
F	6,357	45.9%

Age

<35	2,606	18.8%
35-54	7,179	51.8%
55+	4,064	29.3%

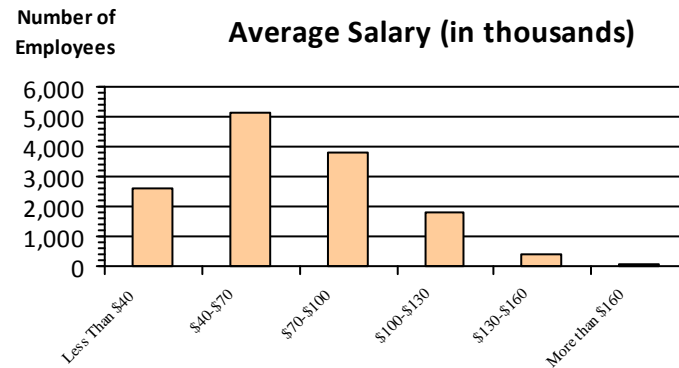
Length of Service



Educational Attainment

HS or Below	3,739	27.0%
Occupational Program	678	4.9%
Between HS and Bachelors	3,369	24.3%
Bachelors + Post Bachelors	4,000	28.9%
Masters and Post Grad	1,713	12.4%
Doctorate and Post Doc	325	2.3%

Average Salary (in thousands)



Type of Employment²

Administrative	4,441	32.1%
Professional	3,429	24.8%
Technical	3,596	26.0%
Clerical	1,005	7.3%
Other White Collar	277	2.0%
Blue Collar	1,101	7.9%

All data unless otherwise noted is provided by the US Office of Personnel Management for the December 2017 reporting period. Non-Federal Workers Data calculated from the US Bureau of Labor Statistics 2017 Annual Averages <https://www.bls.gov/news.release/vet.htm>.¹ Employment categories consistent with the definitions given by the US Office of Personnel Management "Introduction to the Position Classification Standards" (Revised: 2009), available at <https://www.opm.gov/policy-data-oversight/classification-qualifications/classifying-general-schedule-positions/positionclassificationintro.pdf>.²

Who are the Civilian Federal Employees in

Nevada - 2016

Federal Workers in Nevada: 13,369

Percentage Who Are Veterans: 36.39%

Non-Federal Workers in Nevada: 1,326,000¹

*Percentage Who Are Veterans: 9.43%*¹

Five Largest Federal Employers

VA: 4,684



DOI: 1,858



DHS: 1,820



Air Force: 1,550



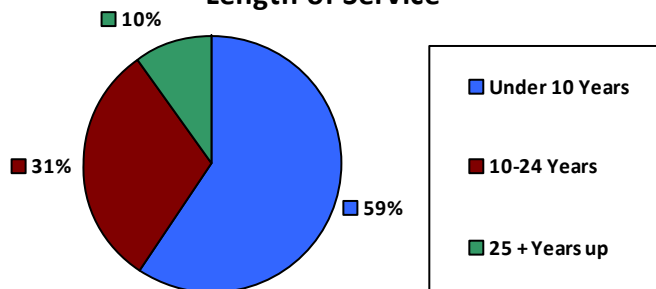
Justice: 515



Race and Ethnicity

White, non-Hispanic	8,323	62.2%
Black/African American, non-Hispanic	1,580	11.8%
Hispanic or Latino	1,210	9.0%
Asian, non-Hispanic	1,478	11.1%
Two or more races	295	2.2%
American Indian and Alaska Native	313	2.3%
Native Hawaiian and Other Pacific Islander	153	1.1%

Length of Service



Educational Attainment

HS or Below	3,330	24.9%
Occupational Program	678	5.1%
Between HS and Bachelors	3,378	25.3%
Bachelors + Post Bachelors	3,985	29.8%
Masters and Post Grad	1,717	12.8%
Doctorate and Post Doc	272	2.0%

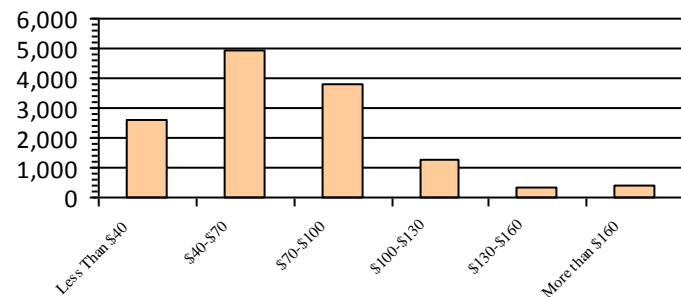
Gender

M	7,393	55.3%
F	5,975	44.7%

Age

<35	2,551	19.1%
35-54	6,978	52.2%
55+	3,840	28.7%

Average Salary (in thousands)



Type of Employment²

Administrative	4,032	30.2%
Professional	3,325	24.9%
Technical	3,515	26.3%
Clerical	1,110	8.3%
Other White Collar	297	2.2%
Blue Collar	1,089	8.1%

All data unless otherwise noted is provided by the US Office of Personnel Management for the December 2016 reporting period. ¹Non-Federal Workers Data calculated from the US Bureau of Labor Statistics 2015 Annual Averages https://www.bls.gov/news.release/archives/vet_03222016.pdf. ²Employment categories consistent with the definitions given by the US Office of Personnel Management "Introduction to the Position Classification Standards" 2009. For a description of the employment categories, refer to <http://www.opm.gov/policy-data-oversight/classification-qualifications/classifying-general-schedule-positions/positionclassificationintro.pdf>.

Who are the Civilian Federal Employees in

Nevada - 2015

Federal Workers in Nevada: 13,138

Percentage Who Are Veterans: 36.23%

Non-Federal Workers in Nevada: 1,328,000¹

Percentage Who Are Veterans: 8.88%¹

Five Largest Federal Employers

VA: 4,504



DOI: 1,777



DHS: 1,736



Air Force: 1,577



Justice: 503



Race and Ethnicity

White, non-Hispanic	8,319	63.3%
Black/African American, non-Hispanic	1,507	11.5%
Hispanic or Latino	1,155	8.8%
Asian, non-Hispanic	1,437	10.9%
Two or more races	253	1.9%
American Indian and Alaska Native	312	2.4%
Native Hawaiian and Other Pacific Islander	147	1.1%

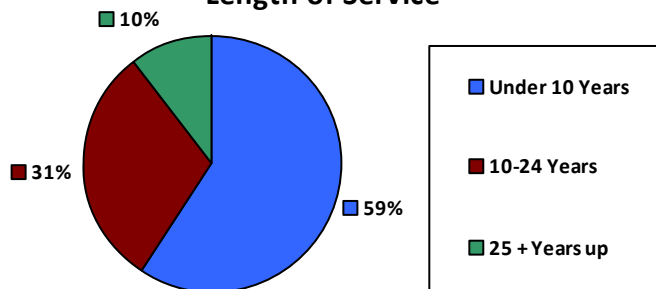
Gender

M	7,307	55.6%
F	5,831	44.4%

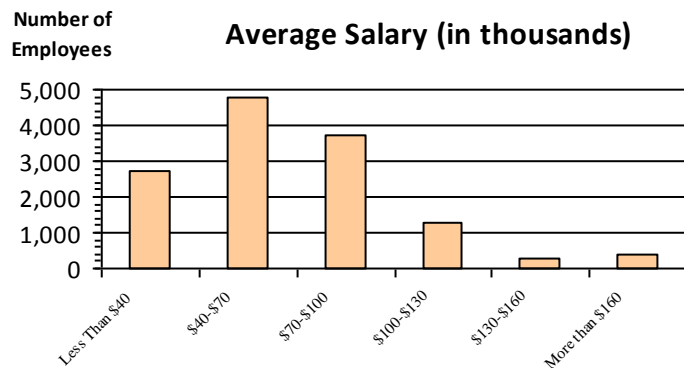
Age

<35	2,561	19.5%
35-54	6,794	51.7%
55+	3,783	28.8%

Length of Service



Average Salary (in thousands)



Educational Attainment

HS or Below	3,272	24.9%
Occupational Program	692	5.3%
Between HS and Bachelors	3,331	25.4%
Bachelors + Post Bachelors	3,936	30.0%
Masters and Post Grad	1,631	12.4%
Doctorate and Post Doc	272	2.1%

Type of Employment²

Administrative	3,963	30.2%
Professional	3,267	24.9%
Technical	3,503	26.7%
Clerical	1,019	7.8%
Other White Collar	292	2.2%
Blue Collar	1,094	8.3%

All data unless otherwise noted is provided by the US Office of Personnel Management for the December 2015 reporting period. ¹Non-Federal Workers Data calculated from the US Bureau of Labor Statistics 2015 Annual Averages https://www.bls.gov/news.release/archives/vet_03222016.pdf. ²Employment categories consistent with the definitions given by the US Office of Personnel Management "Introduction to the Position Classification Standards" 2009. For a description of the employment categories, refer to <http://www.opm.gov/policy-data-oversight/classification-qualifications/classifying-general-schedule-positions/positionclassificationintro.pdf>.

Who are the Civilian Federal Employees in

Nevada - 2014

Federal Workers in Nevada: 12,849

Percentage Who Are Veterans: 36.47%

Non-Federal Workers in Nevada: 1,277,000¹

Percentage Who Are Veterans: 9.87%¹

Five Largest Federal Employers

VA: 4,296



DOI: 1,755



DHS: 1,693



Air Force: 1,559



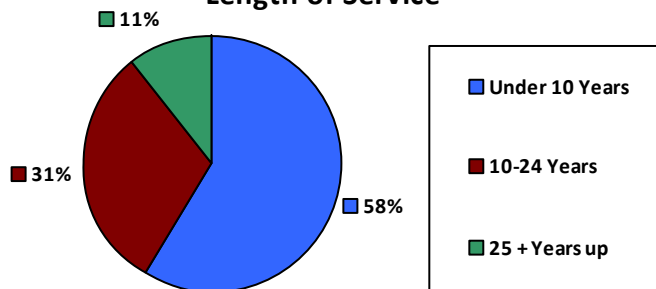
Justice: 500



Race and Ethnicity

White, non-Hispanic	8,336	64.9%
Black/African American, non-Hispanic	1,405	10.9%
Hispanic or Latino	1,079	8.4%
Asian, non-Hispanic	1,374	10.7%
Two or more races	218	1.7%
American Indian and Alaska Native	305	2.4%
Native Hawaiian and Other Pacific Islander	124	1.0%

Length of Service



Educational Attainment

HS or Below	3,278	25.5%
Occupational Program	673	5.2%
Between HS and Bachelors	3,248	25.3%
Bachelors + Post Bachelors	3,825	29.8%
Masters and Post Grad	1,560	12.1%
Doctorate and Post Doc	258	2.0%

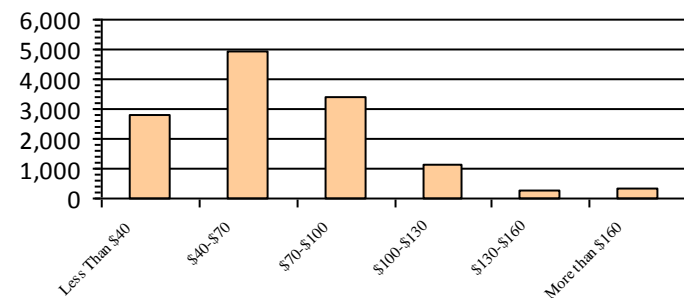
Gender

M	7,221	56.2%
F	5,628	43.8%

Age

<35	2,464	19.2%
35-54	6,689	52.1%
55+	3,696	28.8%

Average Salary (in thousands)



Type of Employment²

Administrative	3,915	30.5%
Professional	3,141	24.4%
Technical	3,554	27.7%
Clerical	907	7.1%
Other White Collar	268	2.1%
Blue Collar	1,064	8.3%

All data unless otherwise noted is provided by the US Office of Personnel Management for the December 2014 reporting period. ¹Non-Federal Workers Data calculated from the US Bureau of Labor Statistics 2014 Annual Averages https://www.bls.gov/news.release/archives/vet_03182015.pdf. ²Employment categories consistent with the definitions given by the US Office of Personnel Management "Introduction to the Position Classification Standards" 2009. For a description of the employment categories, refer to <http://www.opm.gov/policy-data-oversight/classification-qualifications/classifying-general-schedule-positions/positionclassificationintro.pdf>.

Who are the Civilian Federal Employees in

Nevada - 2013

Federal Workers in Nevada: 12,620

Percentage Who Are Veterans: 35.64%

Non-Federal Workers in Nevada: 1,243,000¹

Percentage Who Are Veterans: 8.85%¹

Five Largest Federal Employers

VA: 3,969



DOI: 1,778



DHS: 1,772



Air Force: 1,503



Justice: 503



Race and Ethnicity

White, non-Hispanic	8,306	65.8%
Black/African American, non-Hispanic	1,327	10.5%
Hispanic or Latino	1,052	8.3%
Asian, non-Hispanic	1,299	10.3%
Two or more races	208	1.6%
American Indian and Alaska Native	309	2.4%
Native Hawaiian and Other Pacific Islander	103	0.8%

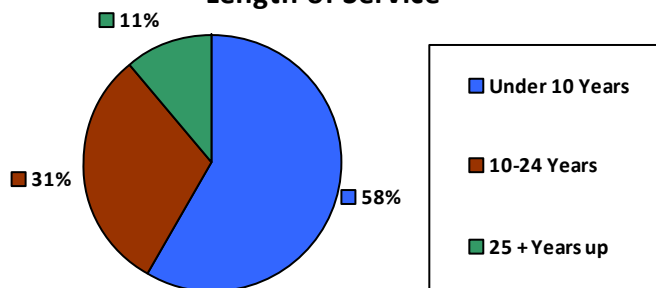
Gender

M	7,072	56.0%
F	5,548	44.0%

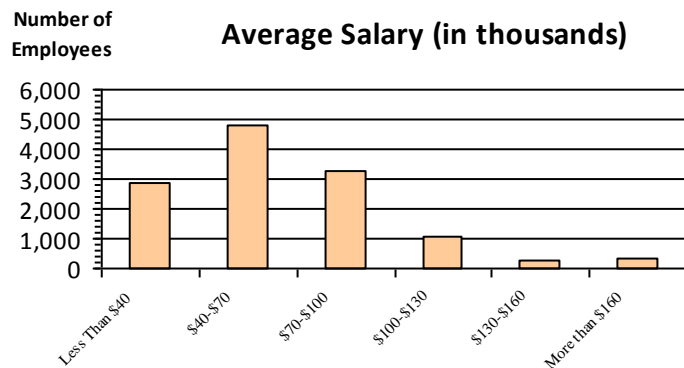
Age

<35	2,484	19.7%
35-54	6,507	51.6%
55+	3,629	28.8%

Length of Service



Average Salary (in thousands)



Educational Attainment

HS or Below	3,340	26.5%
Occupational Program	622	4.9%
Between HS and Bachelors	3,169	25.1%
Bachelors + Post Bachelors	3,755	29.8%
Masters and Post Grad	1,478	11.7%
Doctorate and Post Doc	255	2.0%

Type of Employment²

Administrative	3,867	30.6%
Professional	3,051	24.2%
Technical	3,058	24.2%
Clerical	1,346	10.7%
Other White Collar	292	2.3%
Blue Collar	1,006	8.0%

All data unless otherwise noted is provided by the US Office of Personnel Management for the December 2013 reporting period. ¹Non-Federal Workers Data calculated from the US Bureau of Labor Statistics 2013 Annual Averages https://www.bls.gov/news.release/archives/vet_03202014.pdf. ²Employment categories consistent with the definitions given by the US Office of Personnel Management "Introduction to the Position Classification Standards" 2009. For a description of the employment categories, refer to <http://www.opm.gov/policy-data-oversight/classification-qualifications/classifying-general-schedule-positions/positionclassificationintro.pdf>.