

Who are the Civilian Federal Employees in

Arizona - 2022

Federal Workers in Arizona: 43,934

Percentage Who Are Veterans: 31.69%

Non-Federal Workers in Arizona: 3,439,000¹

Percentage Who Are Veterans: 5.90%¹

Five Largest Federal Employers

VA: 10,347



DHS: 9,131



HHS: 4,428



DOI: 3,684



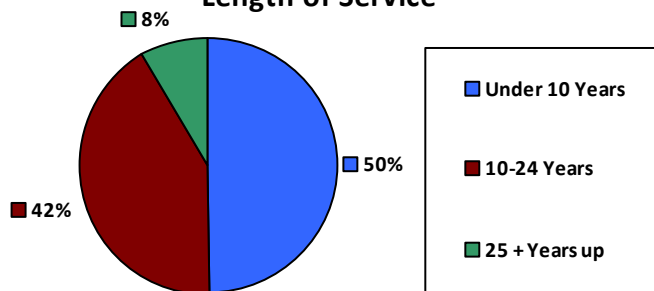
Army: 3,590



Race and Ethnicity

White, non-Hispanic	24,775	56.4%
Black/African American, non-Hispanic	2,907	6.6%
Hispanic or Latino	8,225	18.7%
Asian, non-Hispanic	1,642	3.7%
Two or more races	796	1.8%
American Indian and Alaska Native	5,170	11.8%
Native Hawaiian and Other Pacific Islander	236	0.5%

Length of Service



Educational Attainment

HS or Below	14,289	32.5%
Occupational Program	1,096	2.5%
Between HS and Bachelors	9,770	22.2%
Bachelors + Post Bachelors	12,159	27.7%
Masters and Post Grad	5,338	12.1%
Doctorate and Post Doc	1,173	2.7%

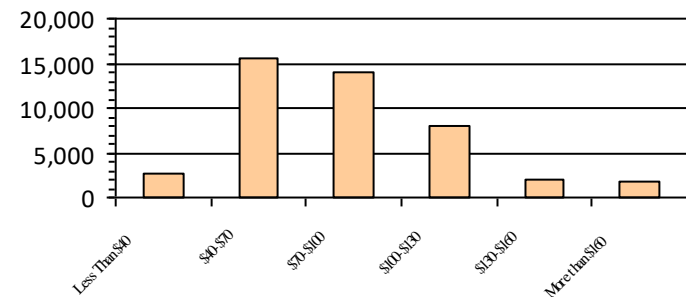
Gender

M	25,780	58.7%
F	18,154	41.3%

Age

<35	7,705	17.5%
35-54	24,692	56.2%
55+	11,537	26.3%

Average Salary (in thousands)



Type of Employment²

Administrative	13,705	31.2%
Professional	10,040	22.9%
Technical	7,843	17.8%
Clerical	3,071	7.0%
Other White Collar	5,319	12.1%
Blue Collar	3,918	8.9%

All data unless otherwise noted is provided by the US Office of Personnel Management for the December 2022 reporting period. ¹Non-Federal Workers Data calculated from the US Bureau of Labor Statistics 2022 Annual Averages <https://www.bls.gov/news.release/pdf/vet.pdf>. ²Employment categories consistent with the definitions given by the US Office of Personnel Management "Introduction to the Position Classification Standards" 2009. For a description of the employment categories, refer to <http://www.opm.gov/policy-data-oversight/classification-qualifications/classifying-general-schedule-positions/positionclassificationintro.pdf>.